

Retreat

DESTINATION TRAILERS

FIND YOUR DESTINATION



FALL PREVIEW



**Keystone RV
Company**

The ultimate ownership experience.

The goal of Keystone RV Company is to surprise and delight our owners at each and every touchpoint. We're happy when our campers are happy, and we are committed to providing the very best ownership experience in the industry.



**Keystone RV
Company**

1 EASIER SHOPPING.

At Keystone, we make choosing an RV as easy as finding the Big Dipper on a dark summer night. With comprehensive online product information, Key Connect™ product advisors, and an unparalleled dealer network, we will help you select the perfect RV for your family's adventure.

2 INNOVATIVE THINKING.

The road's a nicer place when you have the industry's smartest features behind you. Keystone leads the pack in patented innovations that make our RVs safer, more comfortable, and easier to operate.

3 LONG HAUL QUALITY.

To keep you on the road, there are certain things we just won't build a Keystone RV without. Game-changing features like our Unified Wiring Standard, Tru-Fit™ five-point slide construction, and no-fail Tuf-Lok™ A/C duct joiners combined with exhaustive testing and inspections are some of the reasons why Keystone is able to offer our owners the industry's best 3-year limited structural warranty.

4 WORRY-FREE CUSTOMER SERVICE.

Wherever the road takes you, you're never too far from an authorized Keystone service center. We also offer live service assistance, ultra-fast parts shipping, online maintenance tips and tricks, and a single-point warranty claims policy. *That's* peace of mind.

5 KEYSTONE NATION.

When you choose Keystone, you become a part of one of the largest camping families in the country. We're Keystone Nation. A friendly community where people share photos, travel tips and amazing stories – all in the spirit of camaraderie and adventure. Come join us.

Experience the Retreat lifestyle by visiting [#keystoneretreat](#)



Keystone EXCLUSIVE Innovations

Year after year, Keystone RV's experienced team delivers Built For the Long Haul quality you expect and exclusive innovations you won't find anywhere else.



3-year Limited Structural Warranty, 1-year Limited Base Warranty

Every new Keystone RV comes with the industry's best three-year limited structural warranty AND a one-year limited base warranty. Ask your dealer, visit keystonerv.com, or call Keystone owner relations for details.



4G LTE and Wi-Fi prep

All units are equipped with a new Furriion® antenna that integrates 4G LTE and Wi-Fi with standard VHF/UHF/AM/FM reception.

Keystone EXCLUSIVE Innovations



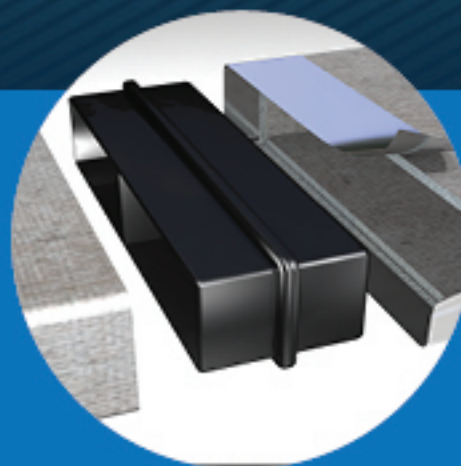
Color-Coded Wiring

Easy-to-trace circuits simplify electrical and entertainment system troubleshooting.



In-Floor Heating Ducts

Ducting allows for more airflow that distributes heat evenly for optimal comfort.



Tuf-Lok™ A/C Duct Joiners

Crush resistant design securely joins A/C ductwork, drastically reducing chilled-air leaks and boosting cooling efficiency and comfort.



Tru-fit™ slide construction

A more durable slide room design that minimizes functional motor and structural stress, resists leaking.

RETREAT



DESTINATION TRAILERS

The Ultimate Getaway.

Designed for extended-stay living, Keystone RV's Retreat destination trailers offer larger living spaces and residential features that give you everything you want when you're ready to get away. From smarter construction and insulation, to thoughtful design and lifestyle features, Retreat's worry-free living may make you rethink what it means to be "home."

For more information, please visit keystonerv.com/retreat

Vacation Luxury

Residential-style amenities that add comfort and style to your vacation home.



Stainless Steel Refrigerator

Large 18 cu. ft. refrigerator featuring double doors and freezer drawers. Store it all and make no sacrifices



King Bed Master Suite

Featuring roomy walk-around beds with abundant storage.



8' Ceiling Height

Taller ceilings creates an open feel for the coach's interior and allows for comfortable head room.



LED Lighting

Energy efficient lighting that lasts longer than halogen bulbs.



Authentic Hardwood Cabinetry

Where others in this segment use wrapped doors, Retreat's real wood cabinets are sturdier, more durable and last longer in moist climates.



Retractable Faucet in Luxury Package

Pull-out faucet with premium 60/40 sink for easier food prep and clean up.



Lighted Backsplash

Stylish backsplash with accent lighting.



Furrion® Chef Collection Cooktop & Oven

Chef-inspired upgraded oven that gives you the perfect blend of performance, precision and style.



Solid Surface Countertops

Marble-look countertops that are durable and moisture resistant.



Fireplace

Oversized fireplace adds warmth and a touch of home.

Long Haul Quality

With extended stay living in mind, Retreat incorporates features that are built to last.



more product detail at
www.keystonerv.com/retreat



Room to Breathe

Spacious and aesthetically pleasing, Retreat interiors are made to feel like home. High ceilings with skylights, oversized windows, and sturdy glass sliding doors usher in plenty of natural light for an open and welcoming environment. Light, barn wood-inspired flooring, white marbled countertops, and upgraded wood blinds add to the residential feel. Along with an abundance of light and space, we made sure to include unique features that model home design trends—large appliances, a built-in wine rack, stylish kitchen backsplash, and so much more.

Two Décor Options

Choose from Lodge (shown left) with its rich espresso leatherette and dynamic valances, and Timber (shown right and below) with caramel leatherette furniture and muted fabric accents.



Enjoy an Evening In

Cozy up to Retreat's entertainment center with built-in television, Bluetooth-compatible CD and DVD players, and oversized fireplace.





more product detail at
www.keystonerv.com/retreat

Retreat | DESTINATION TRAILERS

- 8' Residential Ceiling Height
- Decorative plantation blinds
- Fireplace
- Solid one-piece countertops
- Extra-large double bowl kitchen sink with cover
- Stainless steel four-door counter-depth French door refrigerator
- Furrion® Chef Collection cooktop & oven
- Detachable hitch
- Accent lighting countertops and cabinets
- Residential ceiling fan (most models)
- Power vent fan w/convenient wall mount control
- Washer and dryer prep (FKSS, LOFT, FLFT, MKTS)
- 7' tall bed slide
- Large panoramic tinted window
- Pillow top king mattress
- Large swing away grab handle
- 16 gallon gas/electric DSI water heater
- 40,000 BTU furnace
- 102" Wide body construction



Heated and Enclosed Underbelly
Prevents waterlines from freezing in cooler temperatures.



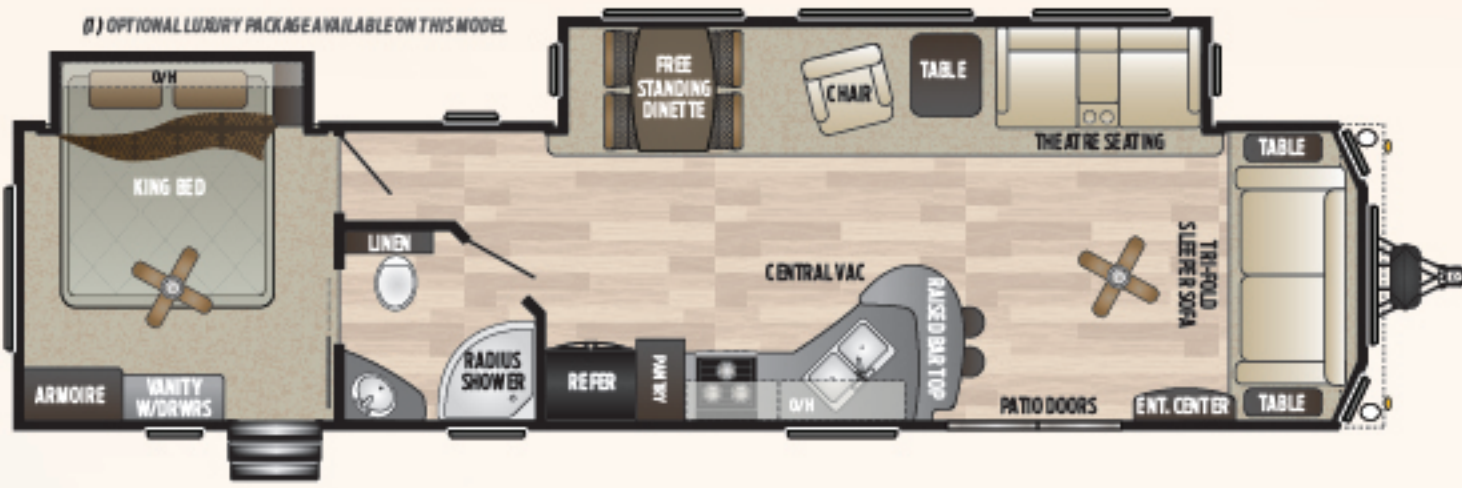
Fiberglass Sidewall
Sleek, gel-coated fiberglass sidewall offers a high end look and finish. (Optional on all models.)



Dual Pane Windows
Optional dual pane windows reduce noise and increases energy efficiency.

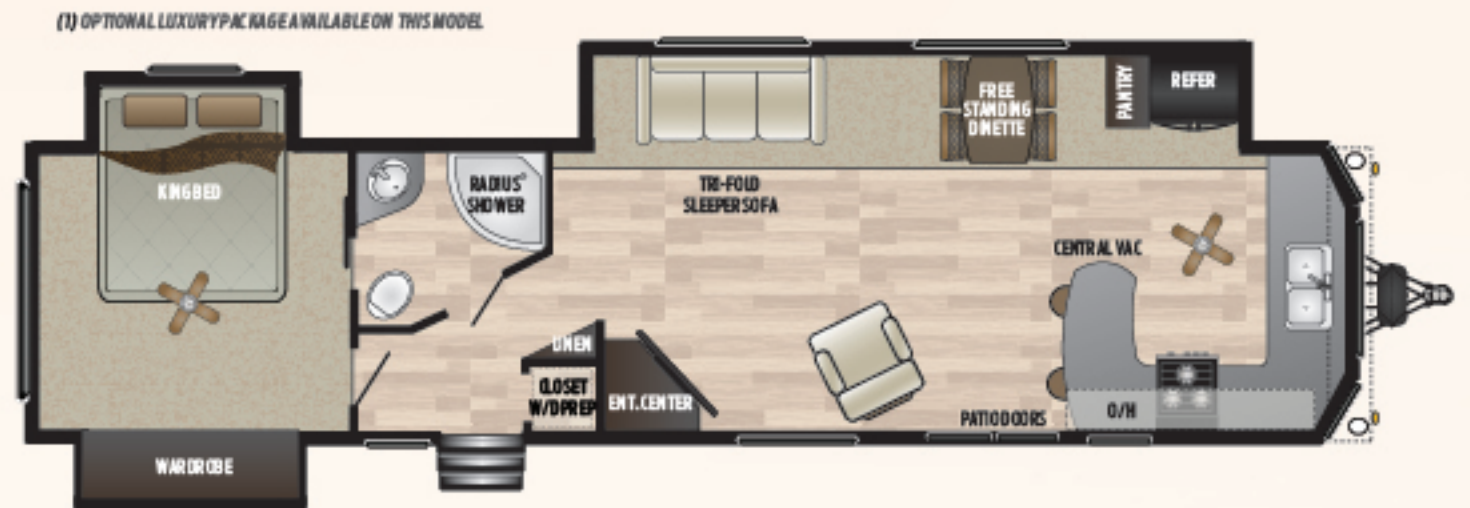


Detachable Hitch
Park ready with an easy-to-remove hitch.



39/391FDEN

Two slides w/ king bed slide, front entertainment, patio door, park model
Weight: 10618 LBS. | Length: 40' 11"



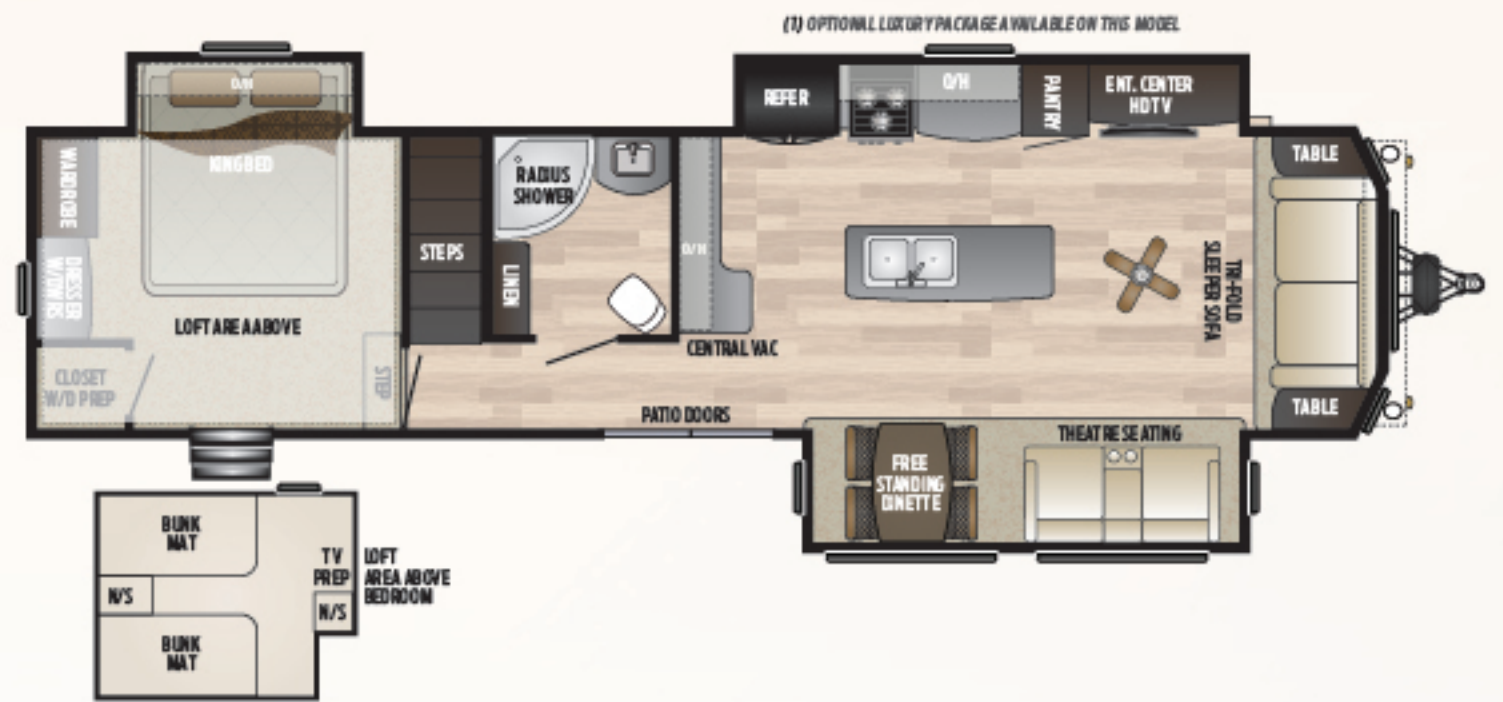
39/391FKSS

Three slides w/ king bed slide, front kitchen, washer dryer prep, patio door, park model
Weight: 10974 LBS. | Length: 40' 11"



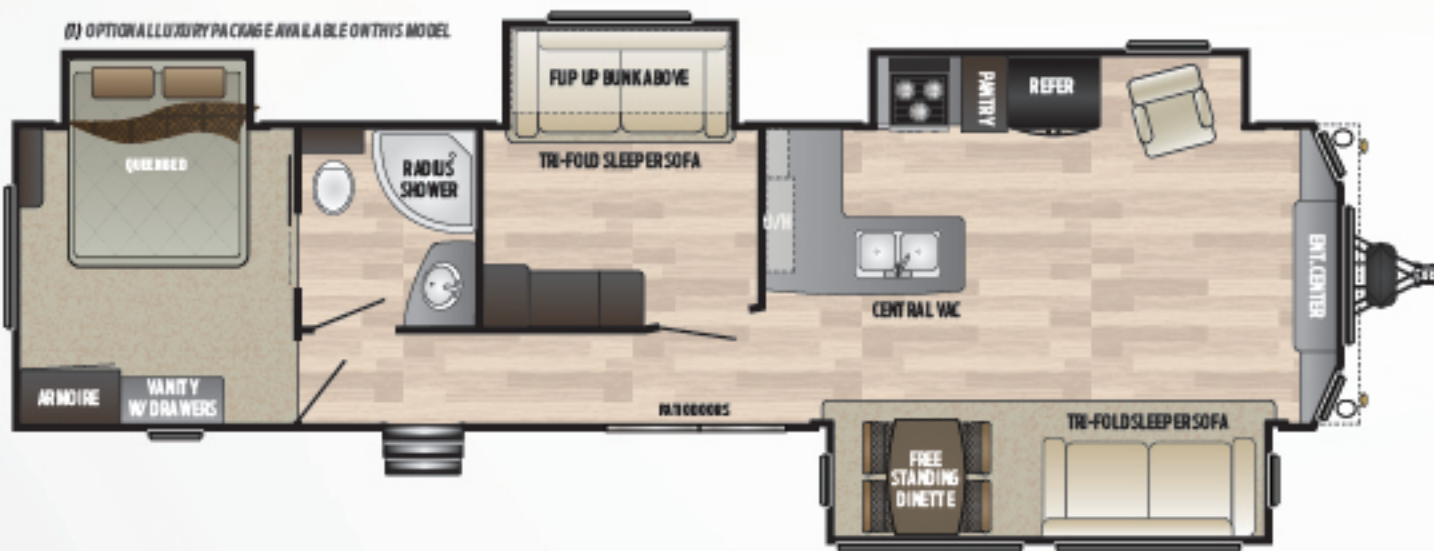
39/391FLFT

New three slides w/ king bed slide, double loft, w/d prep, patio door, park model
Weight: 13095 LBS. | Length: 40' 11"



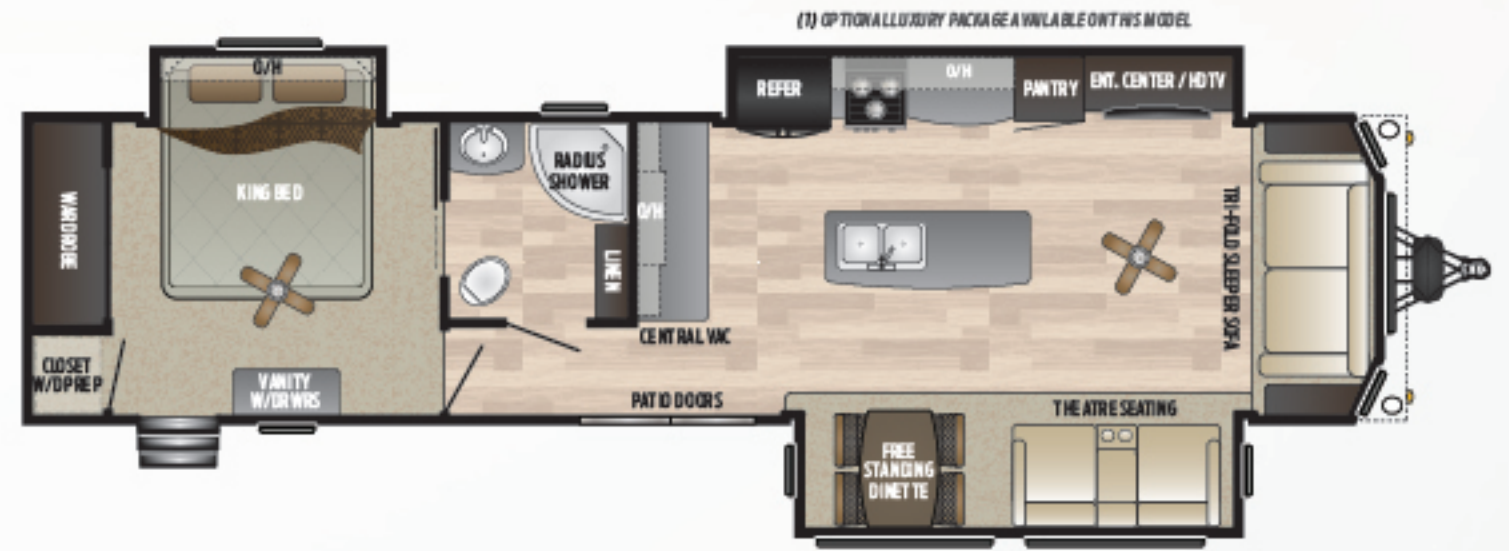
39/391LOFT

Three slides w/ king bed slide, loft, washer dryer prep, patio door, park model
Weight: 12430 LBS. | Length: 40' 8"



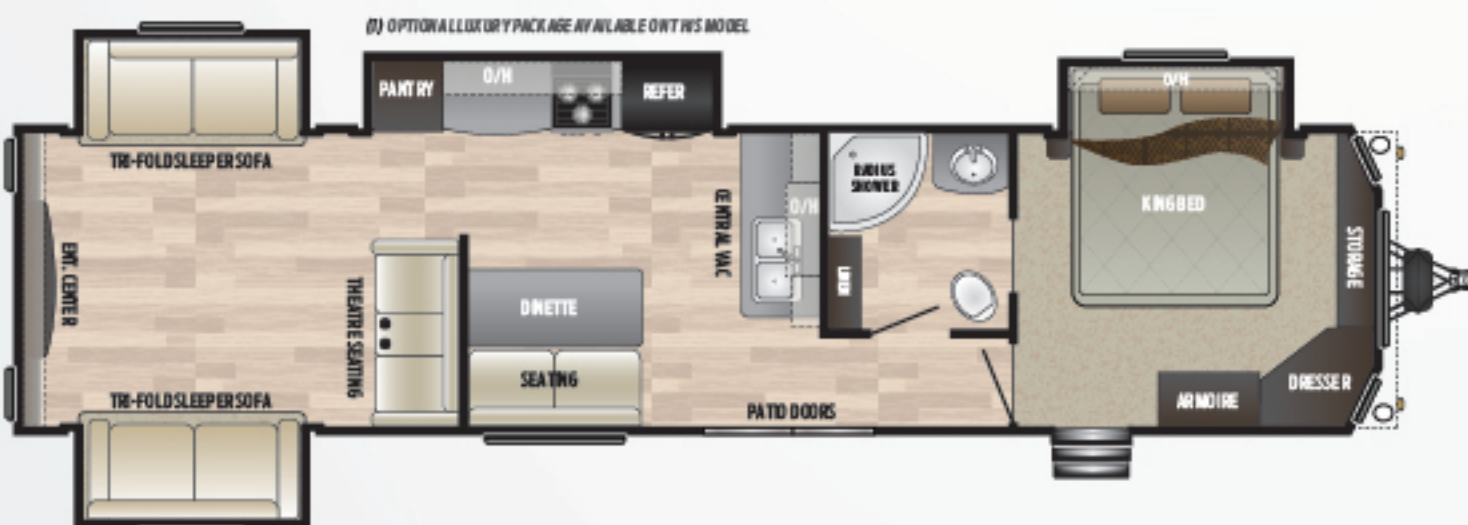
39/391MBNK

Four slides w/ bed slide, mid-bunkhouse, patio door, park model
Weight: 11964 LBS. | Length: 39' 10"



39/391MKTS

Three slides w/ king bed slide, mid-kitchen, w/d prep, patio door, park model
Weight: 11759 LBS. | Length: 40' 8"



39/391RDEN

Four slides w/ king bed slide, opposing tri-fold sofas, rear entertainment, patio door, park model
Weight: 11979 LBS. | Length: 40' 11"

MODEL	WEIGHT	CARRYING CAPACITY	HITCH WEIGHT	FRESH WATER	WASTE WATER	GRAY WATER	LPG	LENGTH*	HEIGHT
39FDEN	10590	2610	1255	53	39	78	60	40' 11"	12' 7"
39IFDEN	10618	2582	1230	53	39	78	60	40' 11"	12' 7"
39FKSS	10828	2522	1380	53	39	78	60	40' 2"	12' 7"
39IFKSS	10974	2376	1360	53	39	78	60	40' 2"	12' 7"
39FLFT	13095	905	1405	53	39	39	60	40' 11"	13' 5"
39IFLFT	13095	905	1405	53	39	39	60	40' 11"	13' 5"
39LOFT	12382	1618	1700	53	39	71	60	40' 8"	13' 5"
39ILOFT	12430	1570	1725	53	39	71	60	40' 8"	13' 5"
39MBNK	11973	1427	1420	53	39	78	60	39' 10"	12' 7"
39IMBNK	11964	1336	1340	53	39	78	60	39' 10"	12' 7"
39MKTS	11718	2197	1915	53	39	71	60	40' 8"	12' 7"
39IMKTS	11759	2166	1925	53	39	71	60	40' 8"	12' 7"
39RDEN	11876	1564	1440	53	39	39	60	40' 11"	12' 7"
39IRDEN	11979	1491	1475	53	39	39	60	40' 11"	12' 7"

LIVING ROOM HIGHLIGHTS

- 8' Ceiling height
- Solid wood slide room fascia
- 39" Main slide room depth
- Decorative plantation blinds in living area
- 72" sleeper sofa
- Fireplace
- 40" HD LED TV (N/A MKTS, FDEN, LOFT, RDEN)
- 50" HD LED TV (MKTS, LOFT, RLTS, RDEN, FLFT)
- Theatre Seating (MKTS, FDEN, LOFT, RDEN, FLFT)
- DVD/AM/FM/CD/MP3 Jensen Stereo system with Bluetooth
- 12 Volt Charging station
- Recliner (FDEN, FKSS)
- Free standing dinette with four chairs w/ flip storage (n/a 39RDEN)
- Residential recessed ceiling lighting
- Ceiling fan with light (n/a MBNK, RDEN, FLFT)

KITCHEN HIGHLIGHTS

- Extra deep double bowl kitchen stainless steel sink
- High rise faucet with pull out sprayer
- Residential "eat in" bar (FKSS, FDEN, RDEN)
- Bar stools (FKSS, FDEN, RDEN)
- Waste basket storage
- Solid wood shaker style residential cabinets with crown molding
- Pre-drilled and screwed hardwood cabinet framing

KITCHEN HIGHLIGHTS (CONT.)

- Easy-glide ball bearing drawer guides
- Full-size Microwave
- Furrion® RV Chef Collection cooktop & oven
- Stainless steel four-door counter-depth French door refrigerator
- Single door pantry
- Water purification system
- Upgraded central vacuum system
- Stainless steel appliance package
- Sink covers
- LED backsplash w/ LED lighting

BATH

- Porcelain Toilet with foot flush
- Radius glass shower with surround
- Power fan w/convenient wall mount control (n/a LOFT)
- Large medicine cabinet
- Washer and dryer prep (n/a FDEN, RDEN, MBNK, RLTS)
- Dressing mirror

BEDROOM

- 7' Tall bed slide
- Oversized bed slide w/overhead cabinets, accented w decorative cabinet door & functional reading lights
- Mega storage under master beds
- Gas strut assisted bed lift

BEDROOM (CONT.)

Etched glass cabinet doors in the bed slide

Two door wardrobe

Fully extended deep dresser drawers

Pleated shades

Large panoramic window

Residential ceiling fan

Recessed decorative lighting

Prep for 2nd TV

EXTERIOR

Fiberglass front

Residential exterior soffit lights

Dual 30 Lbs LP bottles with automatic change over and cover

Large swing away grab handle (Main Door)

2 Exterior speakers

Residential patio door with screen door

Exterior shower

Satellite / Cable TV hook-up

110 volt exterior outlets

E-Coated Wheels

Heated & Enclosed Underbelly

MECHANICS

16 gallon gas/electric DSI water heater

40,000 BTU furnace

15,000 BTU ducted air conditioner

Prepped for a second air conditioner

50 Amp electrical service with detachable cord

55 Amp converter

12 Volt Water Pump

CONSTRUCTION

Unified wiring standard, color coded & numbered

12" Powder coated I-beam frame

Darco wrapped main floor vapor moisture barrier

5/8" Seamless dynaspan sub floor with limited lifetime warranty

2" Wall studs constructed 16" on center

Laminated veneer lumber slideout reinforcements

41/2" Crowned roof

Radius corner blocks around windows and compartment doors

Metal floor registers

SAFETY

Fire extinguisher

Smoke detector

LP detector

CO detector

Safety chains

Emergency Breakaway switch

UNIQUE RETREAT FEATURES

- » Large bay windows with decorative exterior front
- » 8' Tall ceilings
- » 102" wide body construction
- » Detachable hitch
- » Residential high end furniture
- » King bed standard (n/a MBNK)
- » Central vacuum
- » Black tank flush

RETREAT OPTIONS

- » Electric patio awning
- » Stabilizer jacks
- » 2nd 13.5K BTU A/C (std. on FLFT, LOFT)
- » Dual Pane Windows

LUXURY PACKAGE (OPTIONAL)

- » Champaign Laminated Sidewalls
- » Solid Surface Counter Tops
- » Chefs Gourmet Faucet

DISCLAIMER: Product information is as accurate as possible as of the date of publication of this brochure. All features, floor plans, and specifications in this brochure are subject to change without notice. Please also consult Keystone's web site at www.keystonerv.com for more current product information and specifications. Tow Vehicle Disclaimer. CAUTION: Owners of Keystone recreational vehicles are solely responsible for the selection and proper use of tow vehicles. All customers should consult with a motor vehicle manufacturer or their dealer concerning the purchase and use of suitable tow vehicles for Keystone products. Keystone disclaims any liability or damages suffered as a result of the selection, operation, use or misuse of a tow vehicle. KEYSTONE'S LIMITED WARRANTY DOES NOT COVER DAMAGE TO THE RECREATIONAL VEHICLE OR THE TOW VEHICLE AS A RESULT OF THE SELECTION, OPERATION, USE OR MISUSE OF THE TOW VEHICLE. *Length is defined as the distance from the centerline of hitch pin/coupler to rear bumper of trailer. Please review owner's manual prior to purchase for more information on service warranties, extended use, towing and maintenance. Owner's manuals can be found at keystonerv.com.

BUILT FOR THE LONG HAUL



PRINT 1.2019

