

APEX

LIGHTWEIGHT • EASY TO TOW



TERA



NANO

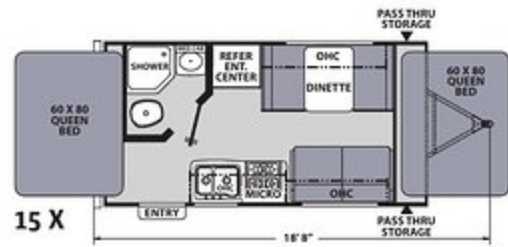
ULTRALITE



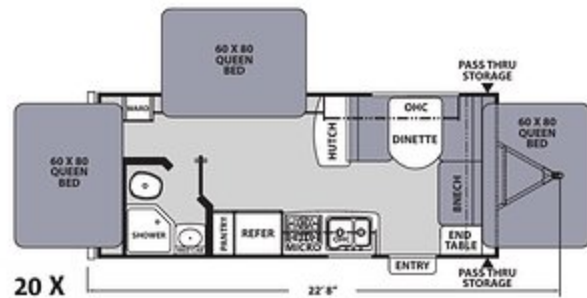

Coachmen[®]
Recreational Vehicles
A division of Forest River, Inc.

NANO EXPANDABLES

These expandable travel trailers offer the advantages of a hard wall camper with the fresh air sleeping of a pop-up tent camper.



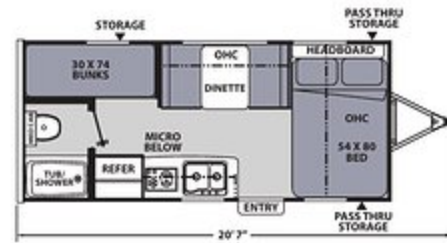
15 X



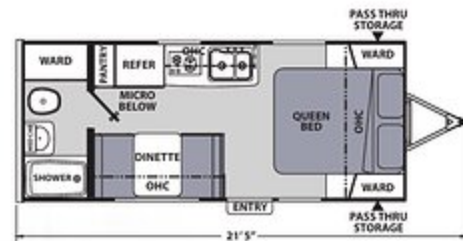
20 X

LIGHTWEIGHT EASY TO TOW

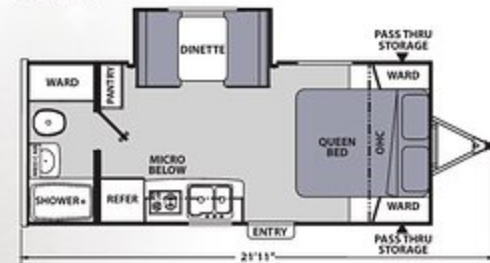
These smaller, easy to tow models deliver many of the amenities of a larger travel trailer.



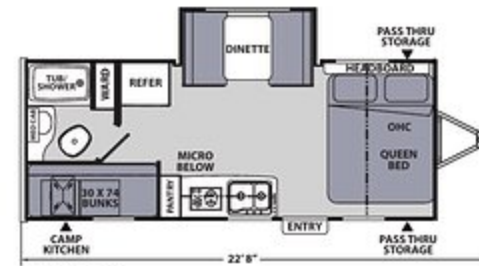
185 BH



187 RB



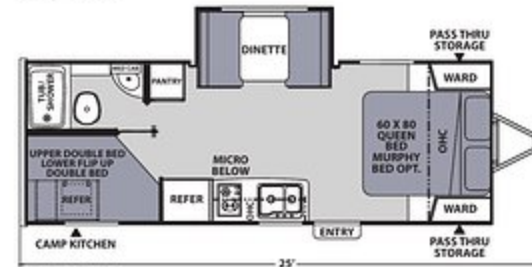
191 RBS



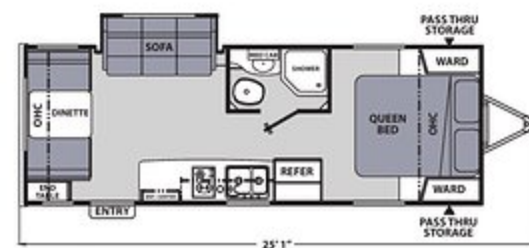
194 BHS



203 RBK



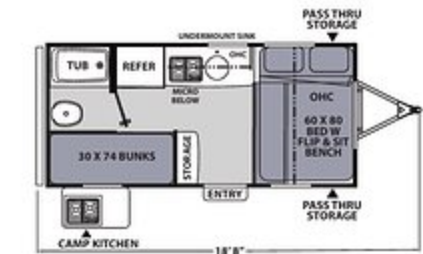
208 BHS



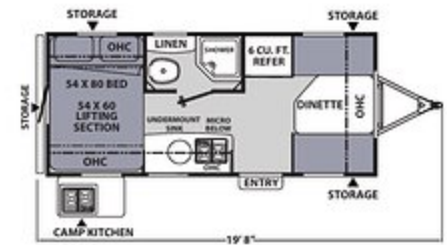
213 RDS

TRAVEL TRAILERS

Adventure awaits in this 7' wide, easy to tow trailer with big amenities. These mighty little campers boast the same solid construction as other Apex models, and include a full bath with shower and toilet, a 6 cu. ft. refrigerator and a 60" x 80" queen bed. (15T Only)



15 T



16 T

TERA Wilderness Package (Mandatory)

- 15" All-Terrain Tires
- Aluminum Rims
- Front Bike Rack
- Toy Lock
- Dual LP Tanks w/Cover
- 100 Watt Solar Panel w/10 AMP Control Charger
- 13.5 BTU A/C
- 12V Heat Pads for Black, Grey & Fresh Water

Nano Expandables	15 X	20 X
Hitch Weight	360	464
Carrying Capacity	860	1,244
UVW	2,940	3,456
GVWR	3,800	4,700
Ext. Length (Incl. Bumper to Hitch)	18' 8"	22' 8"
Ext. Height (Incl. A/C)	9' 9"	10'
Int. Height (Coach)	77"	77"
Awning Length	12'	14'
Fresh Water Capacity (gal.)	30	30
Grey Water Capacity (gal.)	30	30
Waste Water Capacity (gal.)	30	30

Apex Nano	185 BH	187 RB	191 RBS	194 BHS	203 RBK	208 BHS	213 RDS
Hitch Weight	350	316	406	428	478	516	467
Carrying Capacity	930	746	1,234	1,166	2,084	2,052	2,174
UVW	2,870	3,054	3,466	3,634	3,916	3,948	3,826
GVWR	3,800	3,800	4,700	4,800	6,000	6,000	6,000
Ext. Length (Incl. Bumper to Hitch)	20' 7"	21' 5"	21' 11"	22' 8"	23' 5"	25'	25' 1"
Ext. Height (Incl. A/C)	9' 10"	9' 9"	9' 10"	9' 10"	9' 9"	10'	9' 11"
Int. Height (Coach)	77"	77"	77"	77"	77"	77"	77"
Awning Length	12'	12'	12'	14'	15'	14'	15'
Fresh Water Capacity (gal.)	50	50	50	50	50	50	50
Grey Water Capacity (gal.)	30	30	30	30	35	35	35
Waste Water Capacity (gal.)	30	30	30	30	35	35	35

Tera	15 T	16 T
Hitch Weight	396	330
Carrying Capacity	938	940
UVW	2,862	2,860
GVWR	3,800	3,800
Ext. Length (Bumper to Hitch)	18' 8"	19' 8"
Ext. Height (Incl. A/C)	9' 10"	9' 10"
Int. Height (Coach)	77"	77"
Awning Length	10'	12'
Fresh Water Capacity (gal.)	50	50
Grey Water Capacity (gal.)	35	35
Waste Water Capacity (gal.)	35	35

NANO STANDARD FEATURES AND OPTIONS

Nano Package

- (Mandatory)
- Vacuum-bonded Azdel/Fiberglass Side Walls
- Laminated Azdel/Fiberglass Rear Wall
- Vacuum-bonded Laminated Crowned Roof
- Fiberglass Front Cap w/LED Lighting and Window (N/A Tera)
- Aluma-cage Construction
- Laminated Aluminum Framed Floor
- Schwintek Slide System (N/A 15X, 20X, 185BH, 187RB)
- Slide Topper Prep
- Enclosed Underbelly w/Forced Air Heat (Double axle models) (N/A Tera)
- Outside Speakers
- Stabilizer Jacks (4)
- Digital TV Antenna w/Cable Hook-ups and WiFi Capability
- DSI Gas/Electric Water Heater
- Microwave
- Hard Valances
- Tub Surround
- Flush-mount 2-Burner Cooktop
- Stainless Steel Single Bowl Sink w/Flush-mount Cover
- AM/FM Stereo w/Bluetooth
- Skylight in Bath
- Evergreen Sleep Mattress
- Two-Tone White and Grey Fiberglass Exterior Sidewalls
- Dark Grey Exterior Rear Wall (N/A 15X, 20X)

- LED Interior Lighting Throughout
- Regulated LP Port
- 6 Cu. Ft. Double Door Refrigerator (N/A 15X)
- Solar Prep
- Hot/Cold Outside Shower
- Swing Away Assist Handle
- Friction Hinge Entrance Door
- Black Tank Flush
- Access Doors Under Dinette
- Magnetic Door Catches

Interior and Décor

- Prestige Poplar Cabinetry
- Seamless Edge Countertops
- Overhead Bedroom Cabinets w/Side Wardrobes
- Congoleum DiamondFlor Flooring
- Night Shades Throughout
- Pedestal Dinette Table
- Large Oversized Booth
- Shaker Cabinet Door Frames
- Residential Comforter (Select models)
- Stile and Rail Cabinet Front Construction
- LP Leak Alarm
- Fire Extinguisher
- Smoke Alarm
- Carbon Monoxide Detector

Electrical/Heating/AC

- Detachable Marine Style Power Cord
- Outside Receptacle GFI
- USB Chargers
- Direct Vent Furnace

- 13.5K BTU A/C
- 55 Amp Power Center

Galley

- Stainless Steel Single Bowl Sink w/Flush-mount Cover
- Flush-mount 2-Burner Cooktop
- 6 Cu. Ft. Double Door Refrigerator/Freezer
- Microwave
- Seamless Edge Countertops
- Matte Black Hardware

Bath and Water

- Power Bath Vent
- Water Heater Bypass Valve
- On-demand Water Pump
- Hand-crafted Wood Medicine Cabinet
- Below Floor Low Point Drains
- Foot Flush Toilet
- Tub Surround
- 6 Gal. Gas/Electric DSI Hot Water Heater

Exterior/Construction

- Aluma-Cage Construction
- Vacuum-bonded, Aluminum Trussed Roof
- Dicor Crossflex Synthetic Thermoplastic Roofing System
- Vacuum-bonded Azdel Fiberglass Sidewalls (R-9)
- Azdel Fiberglass Rear Wall and Laminated Aluminum Framed Floor (R-11)
- 20 Lb. LP Tank
- Gutter Rail
- Deadbolt Lock

- Tinted Safety Glass Radius Windows
- Radius Entrance Door w/Window
- Radius Thumb Latch Baggage Doors
- Corrosion Resistant Powder Coated Frame
- Dual Battery Tray
- Break Away Switch
- Front Stone Guard
- Pass-thru Storage
- Solid Step
- Dexter® E-Z Lube® Axles
- Nitrogen Filled Radial Tires
- Schwintek Slide Room System

Comfort Package (Mandatory)

- Direct Vent Furnace
- Power Awning w/LED Lighting
- 13.5K BTU A/C
- Spare Tire and Carrier
- Solid Step

OPTIONS

- Murphy Bed (203RBK, 208BHS Only)
- 12V Tank Heater Pads
- 15K BTU A/C Upgrade
- 15" All-Terrain Tires

Off Grid Package

- Dual LP Tank w/Cover
- High Velocity 10" Power Roof Vent
- Jaboni 100 Watt Solar Panel w/10 Amp Control Charger
- 12V Outlets (Pass-thru and Outside Kitchen)

ULTRALITE STANDARD FEATURES AND OPTIONS

Value Package (Mandatory)

- Vacuum-bonded Azdel/Fiberglass Walls
- Laminated Azdel/Fiberglass Rear Wall
- Vacuum-bonded Laminated Crowned Roof
- Slide Topper Prep
- Fiberglass Front Cap w/LED Lighting and Window
- Laminated Aluminum Framed Floor
- Aluma-cage Construction
- Spare Tire
- Outside Speakers
- Stabilizer Jacks (4)
- Digital TV Antenna w/Cable Hook-ups and WiFi Capability
- Enclosed Underbelly w/Forced Air Heat
- 14.5 BTU A/C (13.5 BTU A/C – 215 RBK, 245 BHS)
- Microwave
- 6 Cu. Ft. Double Door Refrigerator
- Lighted, Flush-mount, 3-Burner High Output Range w/Oven
- AM/FM Stereo w/Bluetooth
- Interior Convenience Center
- Skylight in Bath
- Ball Bearing Drawer Guides
- Evergreen Sleep Mattress
- Two-Tone White/Grey Fiberglass Exterior Sidewalls
- Dark Grey Exterior Rear Wall
- LED Interior Lighting Throughout
- Power Awning w/Lighting
- Regulated LP Port
- Exterior Cable Connection
- 100 Watt Solar Panel w/10 AMP Control Charger

- LED Motion Sensor Light in Exterior Storage Area
- Back-up Camera Mount
- Hard Valances
- Night Shades
- Hide-A-Bed Sofa (Deep slides only)
- LED TV
- Access Doors Under Dinette (Some models)
- Ground Effects (Metal skirting and ABS fender skirts)
- Magnetic Door Catches
- Front Stone Guard
- Hot/Cold Outside Shower
- Bottle Covers
- Black Tank Flush Kit
- USB Charging Station
- Swing Away Assist Handle
- Solid Step
- Friction Hinge Entrance Door
- Power Tongue Jack
- High Rise Flex Pull Kitchen Faucet
- LED Accent Lighting
- Backsplash Along Kitchen Countertop
- Stainless Steel Single Bowl Sink w/Flush-mount Cover
- Aluminum Wheels
- Slam Latch Baggage Doors at Pass-thru

Interior and Décor

- Prestige Poplar Cabinetry
- Overhead Bedroom Cabinets w/Side Wardrobes
- Seamless Edge Countertops
- Congoleum DiamondFlor Flooring
- Night Shades Throughout
- Residential Comforter
- Pedestal Dinette Table
- Shaker Cabinet Door Frames

- Large Oversized Booth or U-shaped Dinette w/Sliding Door Storage Access
- 68" Residential Sofa (Most models)
- Stile and Rail Cabinet Front Construction
- 32" LED TV (40" – 256BHS, 265RBSS, 284BHSS, 290BHS, 293RLDS)
- LP Leak Alarm
- Fire Extinguisher
- Smoke Alarm
- Carbon Monoxide Detector

Electrical/Heating/AC

- Furnace – Forced Air/Ducts Per Floorplan
- 55 Amp Power Center
- Outside Receptacle GFI
- 100 Watt Solar Panel w/10 AMP Control Charger
- Ducted Air Conditioner (8' Wides)
- Detachable Marine Style Power Cord
- USB Chargers

Galley

- Power LED Lighted Range Hood
- Stainless Steel Single Bowl Sink w/Flush-mount Cover
- Matte Black Hardware
- Flush-mount 3-Burner Stovetop w/Oven
- 6 Cu. Ft. Double Door Stainless Refrigerator/Freezer

Bath and Water

- Power Bath Vent
- 6 Gal. Gas/Elec. DSI Hot Water Heater
- Water Heater Bypass Valve
- On-Demand Water Pump
- Hand-crafted Wood Medicine Cabinet

- Below Floor Low Point Drains
- Foot Flush Toilet
- Tub Surround
- Glass Shower Door – 34" Neo-angle Showers

Exterior/Construction

- Dual 20 Lb. LP Tanks w/Cover
- Aluma-Cage Construction
- Vacuum-bonded, Aluminum Trussed Roof w/Dicor Crossflex Roof Membrane (R-11 – 7½' wide, R-14 – 8' wide)
- Vacuum-bonded Azdel/Fiberglass Sidewalls (R-9)
- Azdel/Fiberglass Laminated Rear Wall
- Laminated Aluminum Framed Floor (R-11)
- Gutter Rail
- Dead Bolt Lock
- Tinted Safety Glass Radius Windows
- Radius Entrance Door w/Window
- Radius Slam Latch Baggage Doors
- I-beam Chassis Construction
- Corrosion Resistant Powder Coated Frame
- Dual Battery Tray
- Heated and Enclosed Underbelly w/Forced Air
- Break Away Switch
- Solid Step
- Dexter® E-Z Lube® Axles
- Nitrogen Filled Radial Tires

OPTIONS

- Frameless Dark Tint Windows
- 15K BTU A/C Upgrade (215 RBK, 245 BHS only)
- 50 Amp Service w/Second (Forced) 14.5K BTU A/C
- Theater Seating
- Recliners (2)

Each Forest River RV is weighed at the manufacturing facility prior to shipping. A label identifying the unloaded vehicle weight of the actual unit and the cargo carrying capacity is applied to every Forest River RV prior to leaving our facilities. The load capacity of your unit is designated by weight, not by volume, so you cannot necessarily use all available space when loading your unit. All information contained in this brochure is believed to be accurate at the time of publication. However, during the model year, it may be necessary to make revisions and Forest River, Inc., reserves the right to make all such changes without notice, including prices, colors, materials, equipment and specifications as well as the addition of new models and the discontinuance of models shown in this brochure. Therefore, please consult with your Forest River dealer and confirm the existence of any materials, design or specifications that are material to your purchase decision. ©2021 Apex by Coachmen RV, a Division of Forest River, Inc., a Berkshire Hathaway company. All rights reserved. 3/21



423 N. Main Street • P.O. Box 30 • Middlebury, IN 46540 • To learn more about Coachmen RV and our products and see how Coachmen is making the easy life easier, visit www.coachmenrv.com.



GVWR (Gross Vehicle Weight Rating) - is the maximum permissible weight of the unit when fully loaded. It includes all weights, inclusive of all fluids, cargo, optional equipment and accessories. For safety and product performance do NOT exceed the GVWR.

GAWR (Gross Axle Weight Rating) - is the maximum permissible weight, including cargo, fluids, optional equipment and accessories that can be safely supported by a combination of all axles.

UVW (Unloaded Vehicle Weight)* - is the typical weight of the unit as manufactured at the factory. It includes all weight at the unit's axle(s) and tongue or pin and LP Gas. The UVW does not include cargo, fresh potable water, additional optional equipment or dealer installed accessories.

*Estimated Average based on standard build optional equipment.

CCC (Cargo Carrying Capacity)** - is the amount of weight available for fresh potable water, cargo, additional optional equipment and accessories. CCC is equal to GVWR minus UVW. Available CCC should accommodate fresh potable water (8.3 lbs per gallon). Before filling - the fresh water tank, empty the black and grey tanks to provide for more cargo capacity.

**Estimated average based on standard build optional equipment.

YOUR APEX DEALER