

Call today! **541 330 2328**



Cascade 10'6"



Cascade 10'6"





[Floorplans](#)

[Standard Equipment + Options](#)

[Image Gallery](#)

[Model Videos](#)

Camper Specifications and Capacities

TYPE	Double Slide-Out, Rear Entry
BASE WEIGHT	3498
WIDTH	96"
EXTERIOR HEIGHT	113" – 118" w/air
INTERIOR HEIGHT	78"
FLOOR LENGTH	129"
OVERALL LENGTH	18'5"

All weights and measurements are approximate and subject to change

FRESH WATER	65 Gallons
GREY WATER	43 Gallons
BLACK WATER	32 Gallons
LPG CAPACITY	15 Gallons
FURNACE	25,000 BTU
WATER HEATER	6 Gallon Gas DSI
SEASON	4 Season

All HOST Truck Camper Models Standard Equipment & Options

CONSTRUCTION

- Ultralite 100% Aluminum Structure
- 2 Slide-Outs
- Complete Fiberglass Exterior w/Exterior Graphics
- Vacuum Bonded Foam Insulated walls, Floor & Ceiling
- One Piece TPO Roof

- Large Radius Cornered Windows w/Int. Fasteners

INTERIOR FEATURES

- Cabinets w/ Shaker Doors
- Large 3 Burner Range
- Double Door 2-Way 8 CU FT Refrigerator
- Extended Cab w/60 x 80 Queen Bed & Bed Spread
- 12 Volt LED Interior Lighting System
- Adjustable Reading Lights in Bedroom
- Grani-Coat Solid Surface Counter tops
- Folding Stove Top Cover
- Fantastic Fan
- Pleated Shades

CONVENIENCE FEATURES

- Slide-out Awning Toppers
- Radius Entry Door w/Window & Flush Mount Lock w/Dead Bolt
- Screen Door w/Kick Panel
- 24" Exterior Grab Rail
- 12 Volt LED Patio Light w/Interior Switch
- 12 Volt LED Outside Area Lighting
- Skylight Roof Vents w/Screens
- Large J-Rail Rain Gutters
- Enclosed Service Center
- Clearance Lights
- Access Panels for Slide-Out Motors, Water Tank & Holding Tanks
- 25,000 BTU Forced Air Furnace
- Water Heater – 6 Gallon DSI Gas
- Built-in Interior Entry Step
- Enclosed, Heated, Holding Tanks
- Bathroom Power Vent
- Winterization System
- Exterior Shower

EXTERIOR FEATURES

- Radius Insulated Locking Ext. Storage Compartment Doors
- Recessed Automotive Taillights w/Backup Lights
- LED Exterior Lighting

POWER SYSTEMS & SAFETY FEATURES

- Electric Jacks w/ Wireless Remote
- 45 Amp AC/DC Power Converter w/Battery Charger
- RV Systems Monitor Panel
- GFI Circuit Protection
- Smoke, LPG Leak & CO Detectors
- Fire Extinguishers

- Fire Extinguisher
- Heavy Duty Camper Tie Down Brackets
- Freeze Resistant 1/2" Color-Coded Water Lines

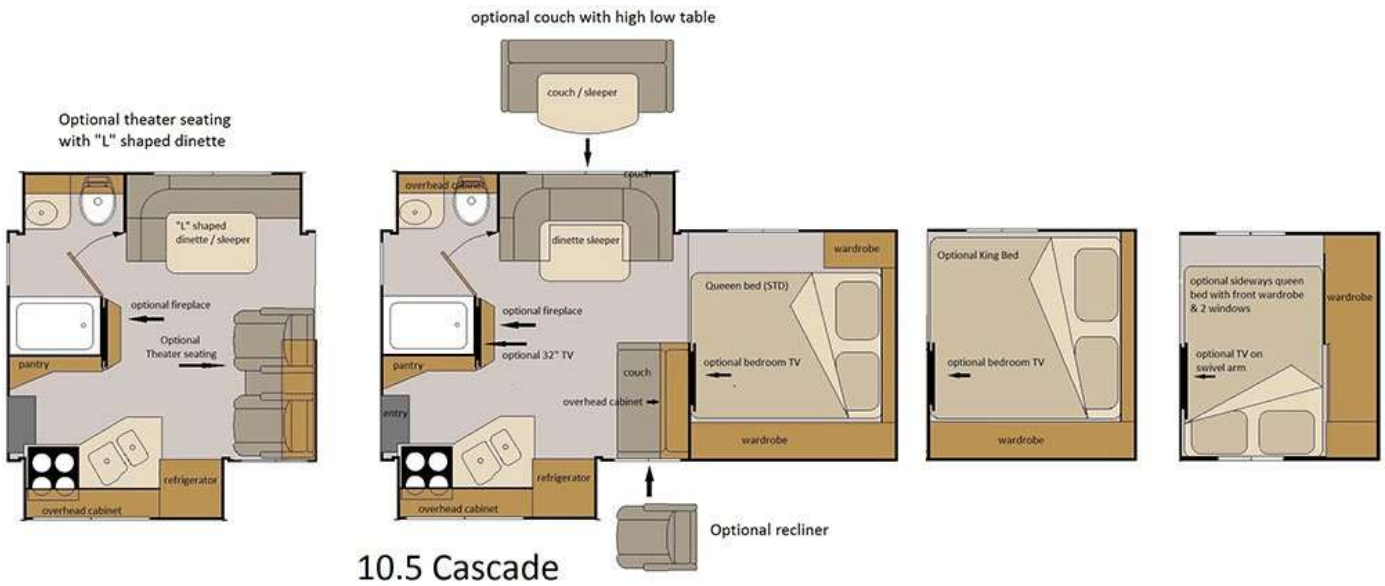
OPTIONS AND EXTRAS

- **Smokey River Package**
- **Pecan Package**
- King Bed with 1 corner wardrobe passenger side (queen bed with 2 corner wardrobes standard)
- King Bed with 1 long wardrobe passenger sidewall (no window) (queen bed with 2 corner wardrobes standard)
- King Bed with 2 nightstands (queen bed with 2 corner wardrobes standard)
- Add Synthetic Leather on Rear sofa (Mammoth – Everest – Cascade)
- Add Synthetic Leather on dinette (or second sofa)
- Footrest on rear couch
- 6FT couch with hi/low Table (not available with theater seating)
- Theater seating with "L" shaped dinette
- Single recliner (replaces 4FT couch)
- 32" TV w/ mount, inverter, antenna, power ports (Main TV)
- 24" bedroom TV w/ swivel arm or mount and power ports
- Automatic satellite dish w/ GPS
- AM/FM/CD/DVD/ w/ alarm clock, bluetooth, 4 Speakers
- Exterior Speakers
- Microwave Oven
- Microwave/Convection Oven
- 3 Burner Range w/Oven (3 burner range no oven Std)
- Thetford sealed (3) burner euro series cook top
- Pillow Shams
- Accordion Privacy Bedroom Door
- Upgraded Escape Hatch (26" X 38")
- Insulated Windows w/ solar cool glass (Insulated windows with solar grey glass std)
- 2.5 KW LP Onan Generator
- 9,000 BTU Low Profile Air Conditioner (for use with portable 2000 watt Generator)
- 11,000 BTU Low Profile Air Conditioner
- DSI Propane/Electric Water Heater (Propane only water heater Std)
- 160 Watt solar Panel w/ Digital Monitor System
- Dual Batteries
- Swing Out Jack Brackets
- Power Passenger Side Awning
- Storage Bay Slide-Out Tray
- RV Barbeque (Includes plumbing for BBQ)
- Plumb for BBQ
- Rear View Camera w/ RCA Adapter

All weights and measurements are approximate and subject to change



Cascade 10'6" Floorplans



Cascade 10'6"

[View all Model Floorplans](#)

