

Class C comfort with
affordable amenities.



OUTLOOK

QUALITY INNOVATION SERVICE

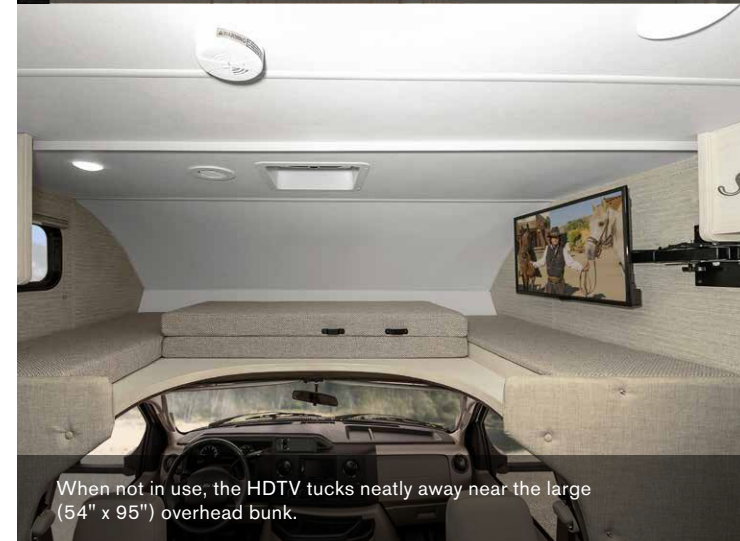
WINNEBAGO



On the Cover: Deep Sky Standard Graphics
Interior: 22C Soft Linen with Light Luxury Linen and Sonoma Cabinetry



With plenty of storage, a three-burner range top and microwave, your Outlook is ready to cook! And the large under-mount sink speeds up cleanup.



When not in use, the HDTV tucks neatly away near the large (54" x 95") overhead bunk.



The standard skylight further brightens the clean design of the Outlook's spacious, fully equipped bath.

Break New Trails Without Breaking The Budget

The Winnebago® Outlook® provides an affordable option for RVers who don't want to compromise on features or quality. The perfect choice for families of all shapes and sizes, the versatile Outlook is available in five well-equipped floorplans ranging from 24'8" to 31'11", including the new double-slideout 26M.

Featuring two new decor packages that allow your own personal touches to shine, the Outlook comes loaded for adventure, with a full galley, bath with shower, overhead bunk, rear bed, dinette and comfortable lounge area. The Outlook is also prepped for solar, and comes complete with controller, 3-way solar plug and roof port for easy wiring.

On the road, the proven Ford® E350 or E450 chassis – now powered by a 7.3L V-8 – brings an array of safety features, while up to 7,500 pounds of towing capacity lets you bring along your favorite toys.

WINNEBAGO
OUTLOOK / Lounge



The lounge is where the day's plans are laid, and its adventures recounted. The comfortable dinette is ideal for work, games, or catching a movie on the 32" HDTV, and the convertible sofa/bed (N/A 22C, 22E) offers additional seating and sleeping options. The new 26M also features available theater seating, with dual cupholders and individually operated recliners and footrests. Easily accessible USB charging ports by the dinette keep smartphones, tablets and other devices charged and ready to go.



Dinette



Cabover bunk



32" HDTV



The Outlook galley includes everything you need to prepare healthy and delicious meals. The large two-door residential refrigerator/freezer keeps things cool, while the microwave and three-burner range top handle cooking duties. And the recessed double-bowl sink (single stainless sink, 26M) eases cleanup and lets you get back to the fun.



Refrigerator



Microwave



Three-burner range



Pantry



Sink

WINNEBAGO
OUTLOOK / **Bed & Bath**



Every Outlook floorplan features a large cabover bunk, a dinette that quickly converts to a comfortable bed, wardrobe, and a rear double or queen bed, including a walkaround queen bed in the 22C, 26M and 31N. Dual nightstands in the 26M and 31N provide easy access and storage for nighttime necessities, with the added convenience of USB charging ports. In the 25J, 26M and 31N, the comfortable sofa/bed adds even more sleeping capacity. Every Outlook floorplan also features a spacious bath and large shower with flexible showerhead, as well as a skylight, powered roof vent, medicine cabinet and mirror.



Dinette bed



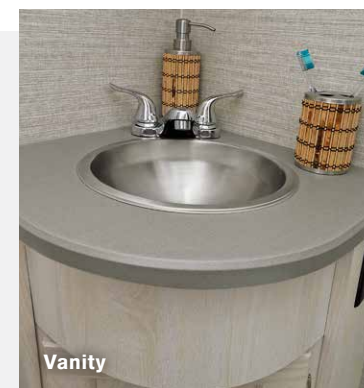
Cabover bunk



Bedroom wardrobe



Shower with skylight



Vanity



On the road, the Outlook's cab seats help keep you alert and comfortable, with armrests, fixed lumbar support, and multi-adjustable slide/recline functions. The cab also features a large 8.95" anti-glare touchscreen/rearview monitor to ease parking; choose the optional side mirrors with electric remote adjustment, defrost, and side cameras for even more visibility.

An array of safety features are standard on the Outlook, including: Electronic Stability Control, which uses automatic selective braking to keep from skidding or sliding sideways; Traction Control, which prevents the drive wheels from spinning and helps maintain traction; and Hill Start Assist, designed to keep you from rolling backward when starting out on hills.

Additional features available with the Smart Driver-Assist Technology Package include Automatic Emergency Braking, Adaptive Cruise Control, and Lane Departure Warning to help you keep in your lane and on the road to your next destination

Note: Some images depict earlier production units. Refer to text for current standard and available features.



Touchscreen radio/rearview monitor



Dash



Steering wheel

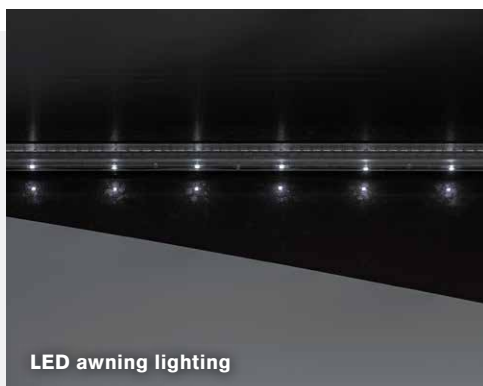


Side mirrors

WINNEBAGO
OUTLOOK / Exterior



Set up camp more easily and quickly, thanks to the powered patio awning. Its LED lighting makes the Outlook's premium high-gloss fiberglass shine, while the large lighted trunk storage compartment makes it easy to pack and unpack your gear, and the included pet leash tie down adds a touch of security for four-footed friends. Life is good – with the right Outlook.



LED awning lighting



Pet leash tie down



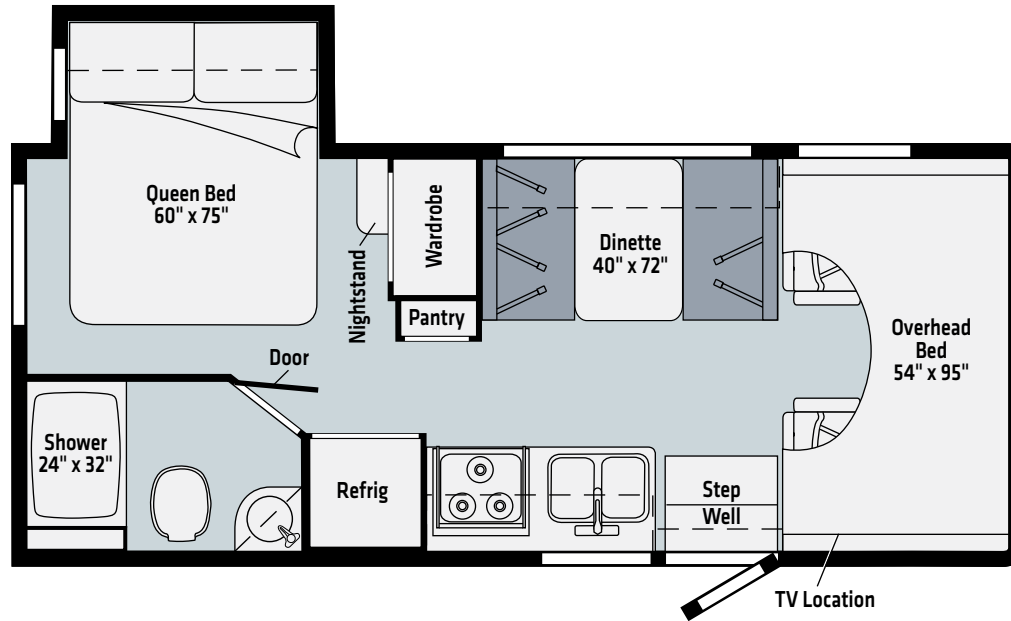
Exterior storage



Stainless steel wheel liners



22C

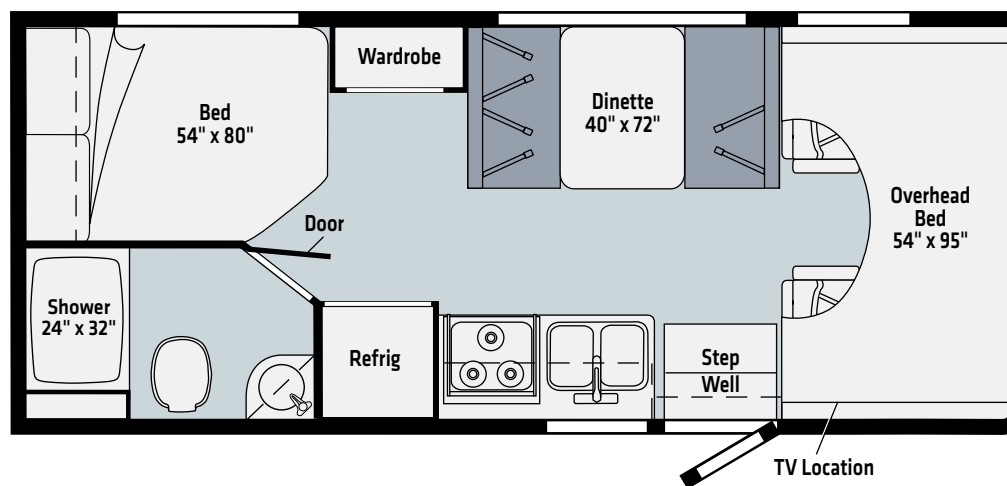


Luxury
Linen

Vinyl



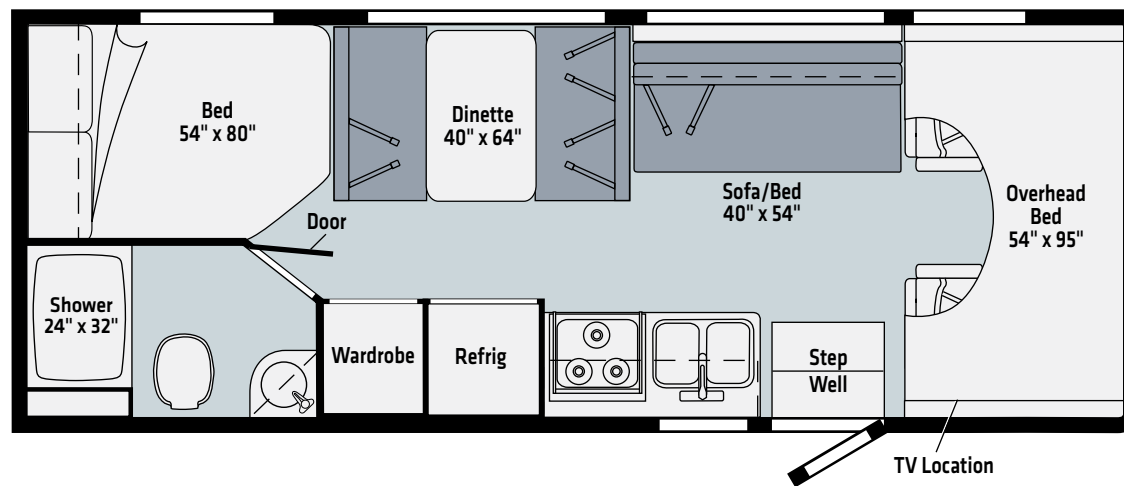
22E



Luxury
Linen

Vinyl

25J

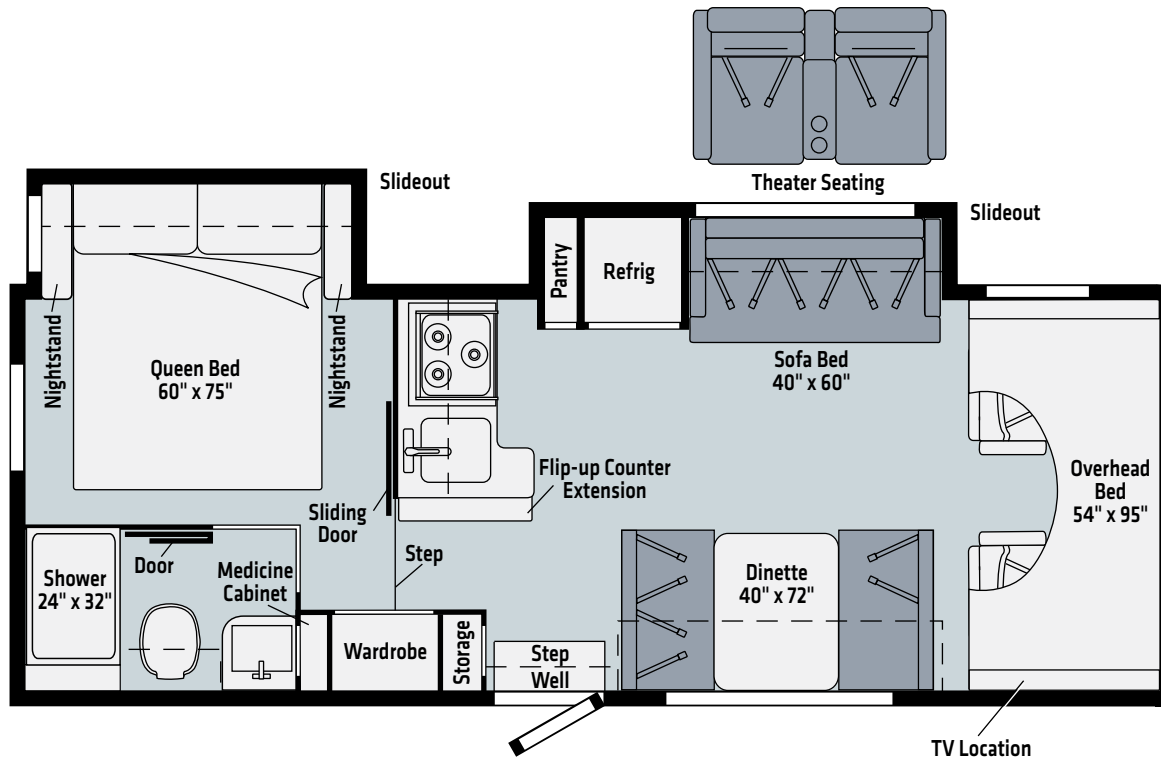


Luxury
Linen

Vinyl



26M

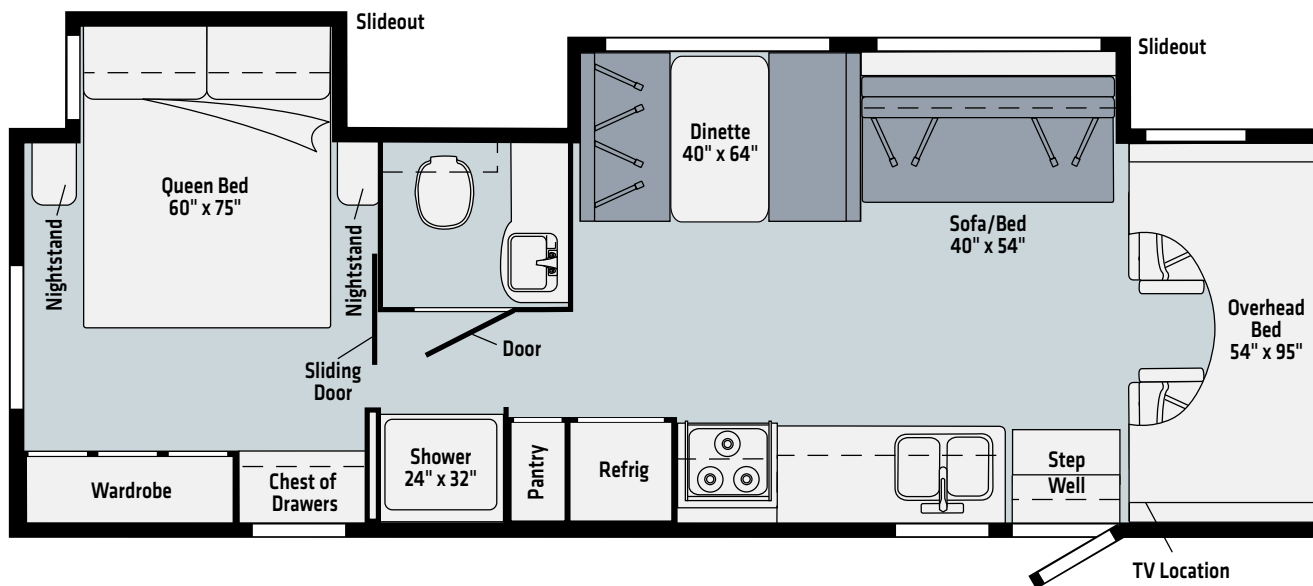


Luxury
Linen

Vinyl



31N



Luxury
Linen

Vinyl

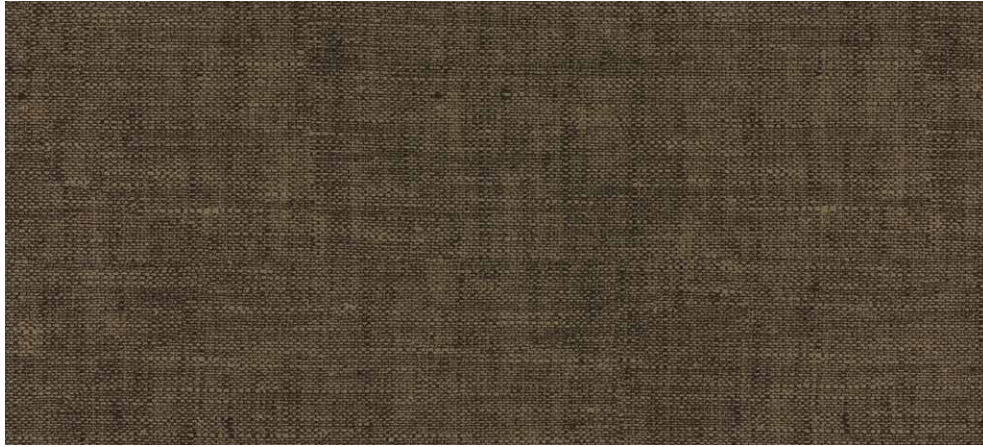


Deep Sky
STANDARD GRAPHICS



Ruby
STANDARD GRAPHICS

Linen with Dark Luxury Linen



Luxury Linen



Wall Board



Bed Cover



Countertop



Vinyl Flooring

Wood



Walnut

Winnebago® reserves the right to change décor materials and specifications without notice or obligation.

Soft Linen with Light Luxury Linen



Luxury Linen



Wall Board



Bed Cover



Countertop



Vinyl Flooring

Wood



Sonoma

Winnebago® reserves the right to change décor materials and specifications without notice or obligation.



| WEIGHTS & MEASURES | 22C | 22E | 25J | 26M | 31N |
|--|---------|---------|---------|---------------|---------|
| Length ⁷ | 24'8" | 24'8" | 26'1" | 27'1" | 31'11" |
| Exterior Height ¹ | 11' | 11' | 11' | 11' | 11' |
| Exterior Width ² | 8'5.5" | 8'5.5" | 8'5.5" | 8'5.5" | 8'5.5" |
| Exterior Storage ³ (cu. ft.) | 45.5 | 51.5 | 58.5 | 40.0 | 50.0 |
| Awning Length | 15' | 15' | 17' | 17' | 20' |
| Interior Height ⁸ | 6'10" | 6'10" | 6'10" | 6'10"/6'5.5"* | 6'10" |
| Interior Width | 8'1.25" | 8'1.25" | 8'1.25" | 8'1.25" | 8'1.25" |
| Freshwater Tank Capacity ⁴ (gal.) | 37 | 37 | 37 | 44 | 34 |
| Water Heater Capacity (gal.) | 6 | 6 | 6 | 6 | 6 |
| Holding Tank Capacity - Black/Gray ⁴ (gal.) | 41/41 | 41/41 | 41/41 | 40/41 | 40/40 |
| LP Capacity ⁵ (lbs.) | 76.14 | 76.14 | 76.14 | 76.14 | 76.14 |
| Fuel Capacity (gal.) | 55 | 55 | 55 | 55 | 55 |
| GCWR ⁶ (lbs.) | 18,500 | 18,500 | 18,500 | 22,000 | 22,000 |
| GVWR (lbs.) | 12,500 | 12,500 | 12,500 | 14,500 | 14,500 |
| GAWR - Front (lbs.) | 5,000 | 5,000 | 5,000 | 5,000 | 5,000 |
| GAWR - Rear (lbs.) | 8,500 | 8,500 | 8,500 | 9,600 | 9,600 |
| Wheelbase | 158" | 158" | 182" | 182" | 220" |

* Rear of Coach

Chassis

Ford® E350 Chassis 350-hp 7.3L V8 Premium Engine, TorqShift 6-speed automatic transmission w/overdrive, 210-amp. alternator (22C, 22E, 25J)

Ford E450 Chassis 350-hp 7.3L V8 Premium Engine, TorqShift 6-speed automatic transmission w/overdrive, 210-amp. alternator (26M, 31N)

4-wheel ABS

Trailer hitch⁵ 7,500-lb. drawbar/500-lb. maximum vertical tongue weight

Cab Conveniences

Cab seats armrests, fixed lumbar support, and multi-adjustable slide/recline

3-point seat belts

Airbags driver and passenger

12-volt powerpoint

Power steering w/tilt and cruise control

Power door locks

Sunvisors

Manual mirrors w/pivoting arms

Cab mat

Radio/Rearview monitor system w/integrated 8.95" multi-function touchscreen monitor and rear color camera, Bluetooth®, Apple CarPlay® and Android Auto™

Remote keyless entry

Auto headlight control

Electronic stability control

Hill start assist

Traction control

Adaptive cruise control

Automatic emergency braking

Auto high beam control

Distance alert

Driver monitoring

Forward collision warning

Lane departure warning

Post-collision braking

Tire pressure monitoring

OPTIONAL EQUIPMENT

Exterior mirrors w/electric remote adjustment, defrost and side cameras

Interior

Amplified digital TV antenna

Pleated night shades

Systems monitor panel

Roof vent (galley and front bunk area)

Blackout cab divider curtain

Bunk privacy curtain

Tinted windows

Vinyl ceiling

USB charger (dinette and bedroom, 26M, 31N) (dinette, 22C, 22E, 25J)

LED lighting

32" HDTV

Vinyl flooring throughout

Assist bar

Galley

Thermoformed countertops

Microwave oven w/touch control

2-door residential refrigerator/freezer

Pantry (22C, 26M, 31N)

3-burner range top

Single stainless steel sink (26M)

Recessed double bowl sink

Flip-up counter extension (26M)

Bath

Shower 24"x32"

Shower w/wall surround

Shower curtain

Glass shower door (31N)

Flexible showerhead

Skylight

Powered roof vent

Toilet w/hand flush

Tissue holder

Robe hook(s)

Towel bar(s) (NA 31N)

Mirror

Medicine cabinet



Bedroom

Double bed w/foam mattress and mattress cover (22E, 25J)

Queen bed w/foam mattress and mattress cover (22C, 26M, 31N)

Wardrobe

Exterior

Premium high-gloss fiberglass skin

Running boards

Large lighted trunk storage compartment

Powered patio awning w/LED lighting

Ladder

Pet leash tie down

Heating & Cooling

20,000 BTU furnace (22C, 22E, 25J)

30,000 BTU furnace (26M, 31N)

Coleman®-Mach® 3 A/C (22C, 22E, 25J)

Coleman®-Mach® 15 A/C (26M, 31N)

Electrical System

AC/DC load center, 55-amp. converter/charger

30-amp. power cord

TV jack and AC receptacle near entrance door

2 Deep-cycle, Group 24 battery

Coach battery disconnect system

Automatic dual-battery charge control

4,000-watt Cummins Onan® MicroQuiet™ gas generator

Auxiliary start circuit

1,000-watt AC/DC inverter w/remote panel

Solar panel/battery charger wire prep

Plumbing System

Pressurized city water hookup

On-demand water pump

6-gallon LP water heater w/electronic ignition

Permanent-mount LP tank w/gauge

Water heater winterization by-pass valve

Black holding tank flushing system

Safety

LP, smoke, and carbon monoxide detectors

10 BC fire extinguisher

Ground fault interrupter

Child seat tether anchor

Warranty⁹

12-month/15,000-mile basic limited warranty¹⁰

36-month/36,000-mile limited warranty on structure¹⁰

15-year warranty on PVC roofing system¹⁰

FOOTNOTES

1. The height of each model is measured to the top of the tallest standard feature and is based on the curb weight of a typically equipped unit. The actual height of your vehicle may vary by several inches depending on chassis or equipment variations. Please contact your dealer for further information.
2. Floorplans feature a wide-body design - over 96". You should be aware that some states restrict access on some or all state roads to 96" in body width. You should confirm the road usage laws in the states of interest to you.
3. The load capacity of your motor home is designated by weight, not by volume, so you cannot necessarily use all available space when loading your motorhome.
4. Capacities are based on measurements prior to tank installation. Slight capacity variations can result upon installation.
5. Capacities shown are the tank manufacturer's listed water capacity (W.C.). Actual filled propane capacity is 80% of listing due to overfilling prevention device on tank.
6. Actual towing capacity is dependent on your particular loading and towing circumstances which includes the GVWR, GAWR, and GCWR as well as adequate trailer brakes. Refer to the chassis operator's manual of your motorhome for further towing information.
7. Increase all lengths by 4" if spare tire is included.
8. Bathroom height is 6'4" on 31N
9. See separate chassis warranty.
10. See your dealer for complete warranty information.

NA Not Available

Not all items available in combination. See dealer for details.

Because features, specifications, equipment, and options may vary from those highlighted in this brochure, the buyer is responsible for confirming with the dealer the features, specifications, equipment, and options included on their specific vehicle. In addition, Winnebago's program of continuous product improvement may result in changes to vehicle specifications, equipment, model availability, and price without notice.