



BLACK SERIES

Address: 19501 E.Walnut Dr.South

City of Industry, CA USA 91748

Phone: 8338 - CAMPER

E-mail: info@blackseries.net

Website: www.blackseries.net

Instagram: [BlackSeriesUS](https://www.instagram.com/BlackSeriesUS)

Facebook: [BlackSeriesUS](https://www.facebook.com/BlackSeriesUS)

YouTube: [BlackSeriesUS](https://www.youtube.com/BlackSeriesUS)

Twitter: [BlackSeriesUS](https://twitter.com/BlackSeriesUS)

Pinterest: [BlackSeriesUS](https://www.pinterest.com/BlackSeriesUS)



BE WITH NATURE

WWW.BLACKSERIES.NET



BLACK SERIES



CONTENTS

ABOUT BLACK SERIES

Our Brands	3
Our History	6
Technological Changes	7
Brand Interaction	8
Commitment To Customers	9
Corporate Social Responsibility	9

INNOVATIONS

Intelligent Technologies	14
Core Competitiveness	15
Made By Black Series	15
Quality Assurance	16
Marketing Network	18
Manufacturing Bases	18
After-sales maintenance	19

PRODUCT SERVICES

Product Range	22
Customer Services	50

ABOUT
BLACK SERIES



OUR BRANDS

Black Series' factories and warehouses are located in Australia, China and United States. The company has been focused on the goal of creating luxurious, home-like experience in rugged outdoors since its establishment.

Black Series is dedicated to camper R&D, manufacturing and vehicle testing. The company's intelligent design keeps safety in focus while encourages an outdoor luxury lifestyle of being with nature.

Born with the rugged off-road nature, Black series trailer is able to conquer terrains around the world, from Australia's rugged "Out Back" to United States and South Africa. Black Series has gained a worldwide reputation of trust on high quality and adventurous travels.

14

Years

Industry experience

5

Continents

Founded in different countries
around the world

100000

Units

Sold throughout the
United States, Australia
and Europe





OUR HISTORY

THE DEVELOPMENT HISTORY OF BLACK SERIES

- | | | | |
|------|--|------|---|
| 1995 | OEM all-glass fiber reinforced plastic moving workshop car for Germany | 2015 | Became one of the world's most recognizable brands in the United States |
| 2002 | Made the first small glass fiber reinforced plastic caravan for the UK | 2018 | Established caravan campgrounds and caravan clubs in Australia and the United States |
| 2004 | OEM tent caravan introduced to Australia | 2019 | Launched its first RV intelligent control system |
| 2010 | Developed into one of Australia's largest off-road RV brand names | 2020 | The total sales exceeded 100,000 units |
| 2014 | Built a revolutionary RV industrial park base in China (Weihai) | 2021 | Re-affirmed its commitment to developing cutting-edge environmental-friendly luxury RVs |

TECHNOLOGICAL CHANGES

BLACK SERIES TECHNOLOGY DEVELOPMENT HISTORY



1995 Successfully developed the first full glass steel trailer under the Black Series brand

2004 Successfully developed the specially designed off-road chassis

2007 Successfully developed the first Black Series off-road tent-style camper

2010 Successfully developed the air tent for campers

2013 Successfully developed the two-row, off-road independent suspension system



2014 Successfully developed the first Black Series off-road trailer with a length of more than 8 meters

2016 Successfully developed the guide wheel for Black Series

2018 Successfully developed the integrated Android based control panel system

2020 Successfully developed the first 13-meter all-in-one 8x8 rugged off-road trailer under the Black Series brand

2021 Successfully developed the first Black Series light-duty RVs with integrated carbon fiber materials

BRAND INTERACTION



COMMITMENT TO CUSTOMERS

With the motto of “customer first”, we always put customers at the center of everything we do. We meet customers' needs with high-quality product range and provide an exceptional product experience at every customer's touch point.

CORPORATE SOCIAL RESPONSIBILITY

Black Series actively fulfills our corporate citizenship. We focus on the common growth of the company and employee and devote ourselves to activities of public interests. While pursuing lean production and efficiency improvements, we are committed to environmental protection and sustainable development, and promote the harmonious coexistence between human and nature.



INNOVATIONS





TECHNOLOGICAL INNOVATION

DESIGN AESTHETICS

Inherits the design philosophy of “environmental protection and intelligence”, the Black Series RV combines a comfortable experience with an off-road style.

BRAKING COORDINATION

Continuously develops professional technology to improve the braking coordination between the front vehicle and the trailer.

EXPERIENCE TECHNOLOGY AND CRAFTSMANSHIP

Provides home-like comfort and outdoor convenience with unique interior technology and intelligent control system.

BOLTED ALL-ALUMINUM LIGHTWEIGHT CHASSIS

Lightweight chassis design opens a new era of all-aluminum chassis.

HIGH-STRENGTH COMPOSITE MATERIAL

Develops high-strength composite materials to improve durability.

TECHNOLOGY PATENT

Cooperates with Rutan, an American engineer and obtained long-ez technology patent.

CORE COMPETITIVENESS

PROVIDE LONGER LIFE SUPPORT IN THE WILD

- > Long-distance durability in the wild
- > Big water tanks
- > 48V fast charging off-grid system with lithium battery
- > Large area solar panel and diesel, natural gas and other energy sources
- > Polyurethane insulation



POWERFUL ALL-TERRAIN PASS ABILITY

- > Independent suspension
- > Reinforced chassis/towing frame
- > All-terrain tires



MADE BY BLACK SERIES

After more than ten years of manufacturing in the field of off-road trailers, the Black Series has implemented a strict quality control system. Our goal is to provide our clients with the most cost-effective and smartest off-road trailer.

QUALITY ASSURANCE



RV TESTS



Rollover Test



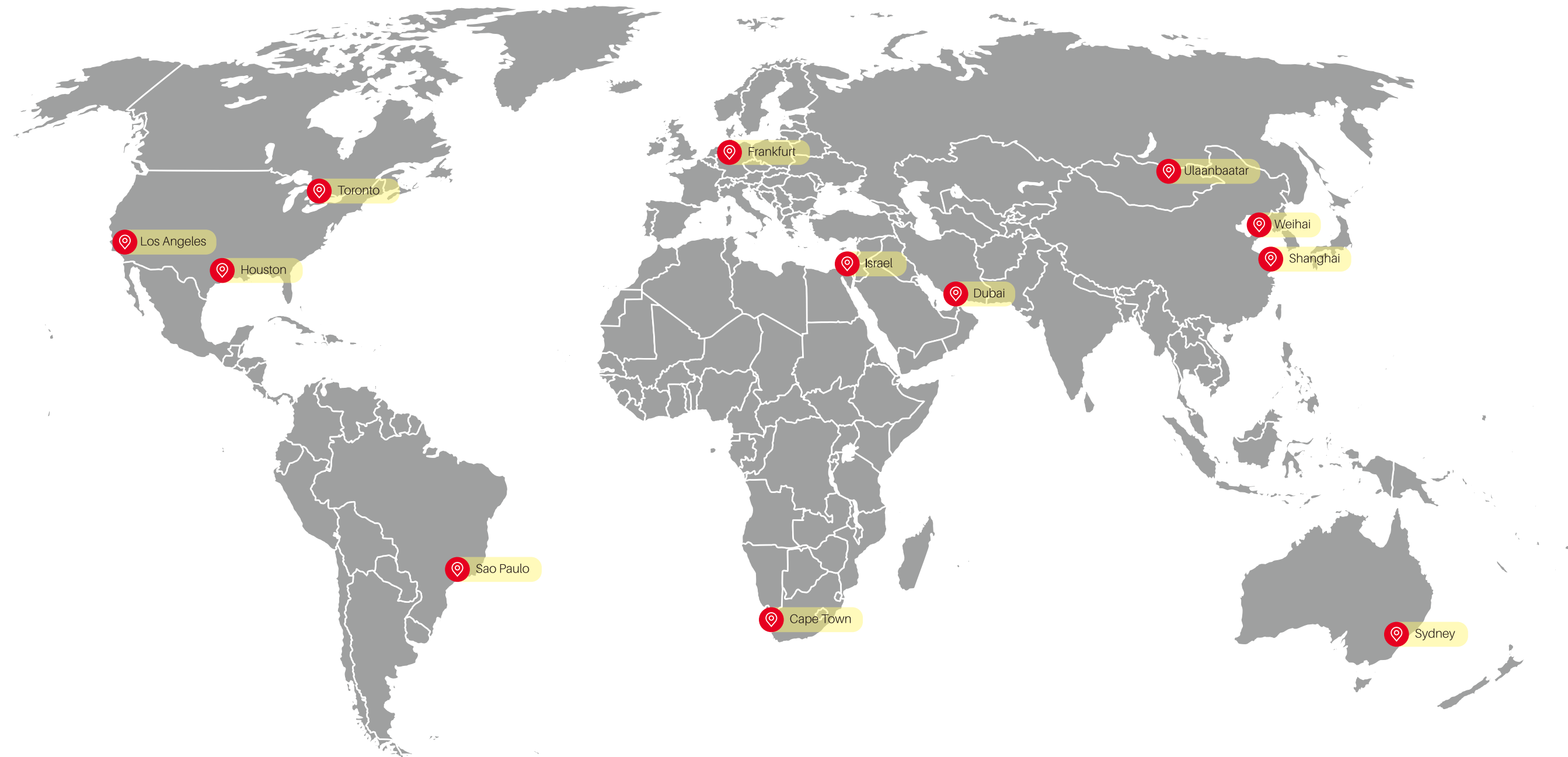
Sinusoidal Road Test



Hill climbing Test

AUTHENTICATION SYSTEM

- ISO9001 Quality Certification
- National 3C Certification
- Designated Enterprise for National Refitted Vehicles
- Certification Standards of the United States, Canada and other countries



MARKETING NETWORK

Black Series RVs have been sold to China, the United States, Europe, Australia, Canada, Dubai, South Africa and other countries.

MANUFACTURING BASES

Black Series manufacturing bases cover the United States, Canada, Europe, Russia, Dubai, India, South Africa, Australia, Brazil and other countries and regions. In 2014, an intelligent RV Industrial Park was established in China.



Distribution of Manufacturing Bases

AFTER-SALES MAINTENANCE

MAP OF BLACK SERIES RVS AFTER-SALES MAINTENANCE STATIONS

Black Series RVs always put customers at the center of everything and provide you with considerate repair and maintenance services. You can call a Black Series repair shop to make an appointment and we will accurately record your repair or maintenance needs, and customize the service plan for you.



Distribution of After-sales Services





PRODUCT SERVICE

PRODUCT SERIES



HEAD QUARTER

HQ12 -P25

HQ14 -P27

HQ15 -P29

HQ17 -P31

HQ19 -P33

HQ21 -P35



TOY HAULER

TH19 -P37

TH22 -P39



CLASSIC

CLASSIC 12 -P41

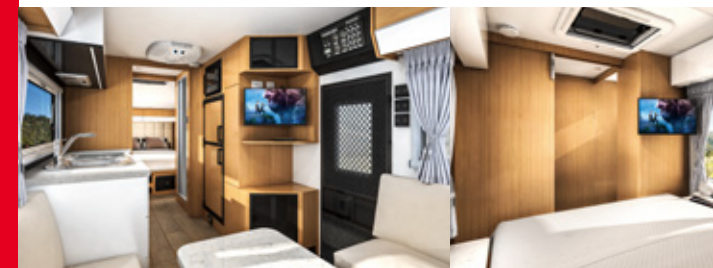
CLASSIC 15 -P43

Dominator -P45

Patron -P47

Classic Double -P49

INTERIOR DESIGN



HQ12

With a cool Schweizer Messer appearance, the HQ12 is equipped with a kitchen, bathroom and shower room, which can meet the living needs of 4 people. This compact design is very suitable for weekend camping enthusiasts to start an adventure trip.



EXTGERIOR

Materials:	Aluminum Composite Panels mounted Aluminum Diamond Plating for added protection
Stone Guard/Skid Guard:	Adds Protection to Bottom Edge of Camper
Insulation:	R16 Insulation on Full Roof and Walls
Roof:	One Piece Aluminum and Roof Hatch with Shade
Design:	Easy Two Step Pop-Top
Pop-Top:	Made of Polymer coated embedded canvas, with mesh screen windows
Windows:	Eurovision Windows with Fly Screen and Privacy Shades
Awning:	10ft Black Series Electrical Awning
Storage:	Pass-Through Storage Front Compartments for 2× Jerry Cans & 2× Propane Tanks
Prep-Table:	Lockable Fold Down Outdoor Table
Outdoor Kitchen:	Stainless Steel Slide Out Sink, Propane Burner Stove and Large Prep-Table
Shower:	Outdoor Shower

INTERIOR

Sleeping Configuration:	1×Queen Bed, Convertible Lounge and bunk bed Removable bunk bed
Wet Bath:	Full Fiberglass shower enclosed with ventilation and Toilet
Lounge:	Dinette with Premium Faux Leather Seating and Adjustable Table. Convertible to sleeper
Kitchen:	Propane Stove, Sink, Microwave, and Fridge
Flooring:	Wood Vinyl
Cabinetry:	Modern White Finish Veneer
Leather:	High Quality Marine Faux Leather
Screen Door:	Standard Screen Door

ELECTRICAL

Electrical System:	12V/110V Electrical System with 2,000 Watts Black Series Pure Sine Wave Inverter with a custom Black Series Control Panel
Battery:	200AH
Solar:	4x Roof Mounted 150 Watt Solar Panels
Internal Lighting:	LED Reading Lights in Bedroom and Lounge
External Lighting:	Wide Angle Side mounted LED Flood Lights. Mounted Front, Side and Rear LED Light Bars
Plugs:	Internal/External 12V Plugs
Shore Power:	30Amps
Control Panel:	Breakers, Digital Gages, & Electrical Power Readout

APPLIANCES/ACCESSORIES

Fridge:	2.8cu. ft. Fridge/Freezer
Stove:	Outdoor and Indoor Propane Stove
Rangehood:	Slim Twin Fan with Light Range Hood
Propane:	2× 20lbs Propane Tanks
Microwave:	6 Gal. Electrical Microwave with Four Operating Features
Furnace:	16,000 BTU Thermostat Control
Air Conditioning:	13,500 BTU Rooftop Air Conditioning Unit
Entertainment System:	CD/FM/IPOD/Bluetooth/USB Radio 2× Interior Speakers 2× Outdoor Marine Grade Speakers 24" TV
Antenna:	HD TV over the air antenna with built in sure-lock
Safety:	Fire Extinguisher, Smoke Alarm and Propane/CO Detector

PLUMBING

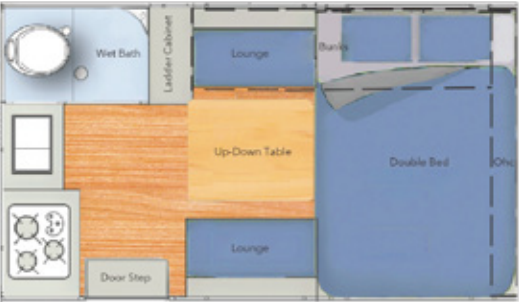
Shower:	Outdoor Shower & Interior Full Fiberglass Shower
Sink:	Large Interior Stainless Steel Sink and Outdoor Stainless Steel Drip Sink
Toilet:	Dometic Toilet
Water Tanks	
Drinking Water:	16 Gal. Triple Filtered System
Fresh Water:	64 Gal. Polyurethane Water Tank with 0.12" Aluminum Bash Cover
Grey Water:	26 Gal. Polyurethane Water Tank with 0.12" Aluminum Bash Cover
Black Water:	26 Gal. Polyurethane Water Tank with 0.12" Aluminum Bash Cover
Hot Water:	Instant Water Heater

CHASSIS

Drawbar/Chassis:	Hot Dipped Galvanized Tubular Steel made from RHS 4"x2", 0.15 Wall Thickness, 0.24" Supporting Plates for extra Strength & Durability
Independent Suspension:	Control Arm with Dual Shock Absorbers and Coil Springs
Tires:	265x75xR16 Off-Road Tires with Two Spare Tires
Wheels:	16" Alloy Wheels with a Black Powder Coated Finish
Brakes:	12" Electric Tow Brake with Mechanical Handbrake Breakaway System Include 2x Safety Chains
Connector :	7 Pin Flat Plug
Anderson Plug:	50Amp Anderson Plug
Hitch:	Black Series ADR Approved Off-Road Poly Block Hitch
Jockey Wheel:	Off-Road Swing Away 10" Jockey Wheel with length 410mm
Recovery Hooks:	2x Rear Facing Recovery Shackles

MEASUREMENTS

Pop Top	+ 1.6ft
Internal Height	6.7ft(open) 5ft(close)
Internal Length	12ft
External Height	10.3ft(Open) 8.7ft(Closed)
External Length	19ft
External Width	7.8ft
Dry Weight	4,422lbs
Tongue Weight	750lbs
GVWR	7,500lbs



HQ14

The HQ14 Pop-up Camper is equipped with a kitchen, bathroom and shower room. It has lighter weight but great durability so that you can enjoy a relaxing and comfortable spacious experience.



EXTERIOR

Materials:	Aluminum Compostie Panels mounted with Aluminum Diamond Plating for added protection
Insulation:	R16 Insulation on Full Roof and Walls
Roof:	One Piece Aluminum
Pop-up:	Made of Polymer coated embeded canvas, with mesh screen windows
Windows:	Eurovision Windows with Fly Screen and Privacy Shades
Awning:	13ft Black Series Electrical Awning
Storage:	Pass-Through Storage Front Compartments for 2× Jerry Cans & 2× Propane Tanks
Outdoor Kitchen:	Stainless Steel Slide Out Sink, Propane Burner Stove and Large Prep-Table
Shower:	Outdoor Shower

INTERIOR

Wet Bath:	Full Fiberglass shower enclosed with ventilation and Toilet
Lounge:	Dinette with Premium Faux Leather Seating
Table:	Adjustable Portable Table
Flooring:	Wood Vinyl
Sleeping Configuration:	1×Queen Bed
Cabinetry:	Modern White Finish Veneer
Leather:	High quality marine graded faux leather
Screen Door:	Standard screen door

ELECTRICAL

Electrical System:	12V/ 110V Electrical System with 1,000 Watts Black Series Pure Sine Wave Inverter with a custom Black Series Control Panel
Battery:	200AH
Solar:	2x Roof Mounted 150 Watt Solar Panels
Internal Lighting:	LED Reading Lights in Bedroom and Lounge
External Lighting:	Wide Angle Side mounted LED Flood Lights. Mouned Front, Side and Rear LED Light Bars
Plugs:	Internal/External 12V Plugs
Shore Power:	30Amps
Control Panel:	Breakers, Digital Gages, & Electrical Power Readout

APPLIANCES/ACCESSORIES

Fridge:	Portable Powered Cooler for Outdoor Storage Compartment
Stove:	Outdoor Propane Stove
Rangehood:	Slim Twin Fan with Light Range Hood
Propane:	2× 20lbs Propane Tanks
Furnace:	16,000 BTU Rooftop Air Conditioning Unit
Entertainment System:	CD/FM/IPOD/Bluetooth/USB Radio 2× Interior Speakers 2× Exterior Speakers 2× Outdoor Marine Grade Speakers 24" TV
Antenna:	HD TV over the air antenna with vuilt in sure-lock
Safety:	Fire Extinguisher, Smoke Alarm and Propane/CO Detector

PLUMBING

Shower:	Outdoor Shower with attachable Privacy Tent & Interior Full Fiberglass Shower enclosed with ventilation
Sink:	Large Interior Stainless Steel Sink and Outdoor Stainless Steel Drip Sink
Toilet:	Dometic Toilet
Water Tanks	
Fresh Water:	50 Gal. Polyurethane Water Tank with 0.12" Aluminum Bash Cover
Grey Water:	26 Gal. Polyurethane Water Tank with 0.12" Aluminum Bash Cover
Black Water:	26 Gal. Polyurethane Water Tank with 0.12" Aluminum Bash Cover
Hot Water:	Instant Water Heater

CHASSIS

Drawbar/Chassis:	Hot Dipped Galvanized Tubular Steel made from RHS 4"x2", 0.15 Wall Thickness, 0.24" Supporting Plates for extra Strength & Durability
Independent Suspension:	Control Arm with Dual Shock Absorbers and Coil Springs
Tires:	265x75xR16 Off-Road Tires with Two Spare Tires
Wheels:	16" Alloy Wheels with a Black Powder Coated Finish
Brakes:	12" Electric Tow Brake with Mechanical Handbrake Breakaway System Include 2x Safety Chains
Connector:	7 Pin Flat Plug
Anderson Plug:	50Amp Anderson Plug
Jockey Wheel:	Off-Road Swing Away 10" Jockey Wheel
Recovery Hooks:	2x Rear Facing Recovery Shackles

MEASUREMENTS

Pop Top	+1.6ft
External Height	8.7ft
External Length	19.8ft
External Width	7.4ft
Dry Weight	4376lbs

HQ15

HQ15 is perfect for small families or young couples who are eager to go off-grid. With the same functions as other higher models, 15-foot single-axle compact design is light but strong, while housing modern luxury appliances.

3
people



EXTERIOR

Materials:	Aluminum Composite Panels Mounted with Aluminum Diamond Plating for added Protection
Stone Guard/Skid Guard:	Adds Protection for Bottom Edge of Camper
Insulation:	R16 Insulation on Full Roof and Walls
Roof:	One Piece Aluminum and Roof Hatch with Shade
Windows:	Eurovision Windows with Fly Screen and Privacy Shades
Awning:	10ft Black Series Electrical Awning
Storage:	Pass Through Storage Front Compartments for 2× Jerry Cans and 2× Propane Tanks
Pre-Table:	Lockable Fold Down Outdoor Table
Outdoor Kitchen:	Stainless Steel Slide Out Sink, Propane Burner Stove and Large Prep-Table
Shower:	Outdoor Shower

INTERIOR

Sleeping Configuration:	1×Queen Bed and Convertible Lounge
En-Suite Bathroom:	Separate Private Bathroom and Shower with Vanity and extra storage
Lounge:	Dinette with Premium Faux Leather Seating and Adjustable Table Convertible to sleeper
Kitchen:	Propane Stove, Sink, Microwave, and Fridge
Flooring:	Wood Vinyl
Cabinetry:	Modern White Finish Veneer
Leather:	High Quality Marine Graded Faux Leather
Screen Door:	Standard Screen Door

ELECTRICAL

Electrical System:	12V/110V Electrical System with 2,000 Watts Black Series Pure Sine Wave Inverter with a custom Black Series Control Panel
Battery:	400AH
Solar:	4x Roof Mounted 150 Watt Solar Panels
Internal Lighting:	LED Reading Lights in Bedroom and Lounge
External Lighting:	Wide Angle Side Mounted LED Flood Lights. Mounted Front, Side and Rear LED Light Bars
Plugs:	Internal/External 12V Plugs
Shore Power:	30Amps
Control Panel:	Breakers, Digital Gages, & Electrical Power Readout

APPLIANCES/ACCESSORIES

Fridge:	2.3 cu. ft. Fridge/Freezer
Stove:	Outdoor and Indoor Propane Stove
Rangehood:	Slim Twin Fan with Light Range Hood
Propane:	2× 20lbs Propane Tanks
Microwave:	6 Gal. Electrical Microwave with Four Operating Features
Furnace:	16,000 BTU Thermostat Control
Air Conditioning:	13,500 BTU Rooftop Air Conditioning Unit
Entertainment System:	CD/FM/IPOD/Bluetooth/USB Radio 2× Interior Speakers 2× Outdoor Marine Grade Speakers 24" TV
Antenna:	HD TV over the air antenna with built in sure-lock
Safety:	Fire Extinguisher, Smoke Alarm and Propane/CO Detector

PLUMBING

Shower:	Outdoor Shower & Interior Full Fiberglass Shower
Sink:	Large Interior Stainless Steel Sink and Outdoor Stainless Steel Drip Sink
Toilet:	Dometic Toilet
Water Tanks	
Drinking Water:	16 Gal. Triple Filtered System
Fresh Water:	64 Gal. Polyurethane Water Tank with 0.12" Aluminum Bash Cover
Grey Water:	26 Gal. Polyurethane Water Tank with 0.12" Aluminum Bash Cover
Black Water:	26 Gal. Polyurethane Water Tank with 0.12" Aluminum Bash Cover
Hot Water:	Instant Water Heater

CHASSIS

Drawbar/Chassis:	Hot Dipped Galvanized Tubular Steel made from RHS 4"x2", 0.15 Wall Thickness, 0.24" Supporting Plates for extra Strength & Durability
Independent Suspension:	Control Arm with Dual Shock Absorbers and Coil Springs
Tires:	265x75xR16 Off-Road Tires with Two Spare Tires
Wheels:	16" Alloy Wheels with a Black Powder Coated Finish
Brakes:	12" Electric Tow Brake with Mechanical Handbrake Breakaway System Include 2x Safety Chains
Connector:	7 Pin Flat Plug
Anderson Plug:	50Amp Anderson Plug
Hitch:	Black Series ADR Approved Off-Road Poly Block Hitch
Jockey Wheel:	Off-Road Swing Away 10" Jockey Wheel
Recovery Hooks:	2x Rear Facing Recovery Shackles

MEASUREMENTS

Internal Height	6.3ft
Internal Length	15ft
External Height	10.2ft
External Length	23ft
External Width	7.8ft
Net Weight	5291lbs
Tongue Weight	750lbs
GVWR	7500lbs



HQ17

It is designed based on a concept of high durability and exudes a sense of luxury at the same time. HQ17 is an intelligently designed family hauler that maximizes the sense of space. This trailer sleeps up to 5. You can play and entertain by day and comfortably sleep at night.



EXTERIOR

Materials:	Aluminum Composite Panels mounted with Aluminum Diamond Plating for added protection
Stone Guard/Skid Guard:	Adds Protection for Bottom Edge of Camper
Insulation:	R16 Insulation on Full Roof and Walls
Roof:	One Piece Aluminum and Roof Hatch with Shade
Windows:	Eurovision Windows with Fly Screen and Privacy Shades
Awning:	13ft Black Series Electrical Awning
Storage:	Pass-Through Storage Front Compartments for 2× Jerry Cans & 2× Propane Tanks
Pre-Table:	Lockable Fold Down Outdoor Table
Outdoor Kitchen:	Stainless Steel Slide Out Sink, Propane Burner Stove and Large Prep-Table
Shower:	Outdoor Shower

INTERIOR

Sleeping Configuration:	1×Queen Bed,2×Bunk Beds, and Convertible Lounge
Wet Bath:	Full Fiberglass Shower Enclosed with Ventilation and Toilet
Lounge:	Dinette with Premium Faux Leather Seating and Adjustable Table Convertible to sleeper
Kitchen:	Propane Stove, Sink, Microwave, and Fridge
Flooring:	Wood Vinyl
Cabinetry:	Modern White Finish Veneer
Leather:	High Quality marine graded faux leather
Screen Door:	Standard screen door

ELECTRICAL

Electrical System:	12V/110V Electrical System with 2,000 Watts Black Series Pure Sine Wave Inverter with a custom Black Series Control Panel
Battery:	400AH
Solar:	4x Roof Mounted 150 Watt Solar Panels
Internal Lighting:	LED Reading Lights in Bedroom and Lounge
External Lighting:	Wide Angle Side mounted LED Flood Lights. Mounted Front, side and Rear LED Light Bars
Plugs:	Internal/External 12V Plugs
Shore Power:	30Amps
Control Panel:	Breakers, Digital Gages, & Electrical Power Readout

APPLIANCES/ACCESSORIES

Fridge:	6 cu. ft. Fridge/Freezer
Stove:	Outdoor and Indoor Propane Stove
Rangehood:	Slim Twin Fan with Light Range Hood
Propane:	2× 20lbs Propane Tanks
Microwave:	6 Gal. Electrical Microwave with Four Operating Features
Furnace:	16,000 BTU Thermostat Control
Air Conditioning:	13,500 BTU Rooftop Air Conditioning Unit
Entertainment System:	CD/FM/IPOD/Bluetooth/USB Radio 2× Interior Speakers 2× Outdoor Marine Grade Speakers 24" TV
Antenna:	HD TV over the air antenna with built in sure-lock
Safety:	Fire Extinguisher, Smoke Alarm and Propane/CO Detector

PLUMBING

Shower:	Outdoor Shower & Interior Full Fiberglass Shower
Sink:	Large Interior Stainless Steel Sink and Outdoor Stainless Steel Drip Sink
Toilet:	Dometic Toilet
Water Tanks	
Drinking Water:	12 Gal. Triple Filtered System
Fresh Water:	64 Gal. Polyurethane Water Tank with 0.12" Aluminum Bash Cover
Grey Water:	26 Gal. Polyurethane Water Tank with 0.12" Aluminum Bash Cover
Black Water:	26 Gal. Polyurethane Water Tank with 0.12" Aluminum Bash Cover
Hot Water:	Instant Water Heater

CHASSIS

Drawbar/Chassis:	Hot Dipped Galvanized Tubular Steel made from RHS 4"x2", 0.15 Wall Thickness, 0.24" Supporting Plates for extra Strength & Durability
Independent Suspension:	Control Arm with Dual Shock Absorbers and Coil Springs
Tires:	265x75xR16 Off-Road Tires with Two Spare Tires
Wheels:	16" Alloy Wheels with a Black Powder Coated Finish
Brakes:	12" Electric Tow Brake with Mechanical Handbrake Breakaway System Include 2x Safety Chains
Connector:	7 Pin Flat Plug
Anderson Plug:	50Amp Anderson Plug
Hitch:	Black Series ADR Approved Off-Road Poly Block Hitch
Jockey Wheel:	Off-Road Swing Away 10" Jockey Wheel
Recovery Hooks:	2x Rear Facing Recovery Shackles

MEASUREMENTS

Internal Height	6.3ft
Internal Length	17ft
External Height	10.3ft
External Length	23.8ft
External Width	7.8ft
Net Weight	6173lbs
Tongue Weight	1000lbs
GVWR	10000lbs



HQ19

The flagship travel trailer HQ19 adopts the most luxurious design in the whole series, allowing you to embark on any trip at any time.



EXTERIOR

Materials:	Aluminum Composite Panels Mounted with Aluminum Diamond Plating for added protection
Stone Guard/Skid Guard:	Adds Protection for Bottom Edge of Camper
Insulation:	R16 Insulation on Full Roof and Walls
Roof:	One Piece Aluminum and Roof Hatch with Shade
Windows:	Eurovision Windows with Fly Screen and Privacy Shades
Awning:	13ft Black Series Electrical Awning
Storage:	Pass Through Storage Front Compartments for 2× Jerry Cans and 2× Propane Tanks
Pre-Table:	Lockable Fold Down Outdoor Table
Outdoor Kitchen:	Stainless Steel Slide Out Sink, Propane Burner Stove and Large Prep-Table
Shower:	Outdoor Shower

INTERIOR

Sleeping Configuration:	1×Queen Bed and Convertible Lounge
En-suite Bathroom:	Seperate private Bathroom and Shower with Vanity and Laundry
Lounge:	Dinette with Premium Faux Leather Seating and Adjustable Table Convertible to sleeper
Kitchen:	Propane Stove, Sink, Microwave, and Fridge
Flooring:	Wood Vinyl
Cabinetry:	Modern White Finish Veneer
Leather:	High Quality Marine Graded Faux Leather
Screen Door:	Standard Screen Door

ELECTRICAL

Electrical System:	12V/110V Electrical System with 2,000 Watts Black Series Pure Sine Wave Inverter with a custom Black Series Control Panel
Battery:	400AH
Solar:	4x Roof Mounted 150 Watt Solar Panels
Internal Lighting:	LED Reading Lights in Bedroom and Lounge
External Lighting:	Wide Angle Side mounted LED Flood Lights Front & Rear LED Light Bar
Plugs:	Internal/External 12V Plugs
Shore Power:	30Amps
Control Panel:	Breakers, Digital Gages, & Electrical Power Readout

APPLIANCE/ACCESSORIES

Fridge:	6 cu. ft. Fridge/Freezer
Stove/ Oven:	Outdoor and Indoor Propane Stove
Rangehood:	Slim Twin Fan with Light Range Hood
Propane:	2× 20lbs Propane Tanks
Microwave:	6 Gal. Electrical Microwave with Four Operating Features
Furnace:	16,000 BTU Thermostat Control
Air Conditioning:	13,500 BTU Rooftop Air Conditioning Unit
Entertainment System:	CD/FM/IPOD/Bluetooth/USB Radio 2× Interior Speakers 2× Outdoor Marine Grade Speakers 24" TV
Antenna:	HD TV over the air antenna with built in sure-lock
Safety:	Fire Extinguisher, Smoke Alarm and Propane/CO Detector

PLUMBING

Shower:	Outdoor Shower & Interior Full Fiberglass Shower
Sink:	Large Interior Stainless Steel Sink and Outdoor Stainless Steel Drip Sink
Toilet:	Dometic Toilet
Water Tanks	
Drinking Water:	12 Gal. Triple Filtered System
Fresh Water:	64 Gal. Polyurethane Water Tank with 0.12" Aluminum Bash Cover
Grey Water:	26 Gal. Polyurethane Water Tank with 0.12" Aluminum Bash Cover
Black Water:	26 Gal. Polyurethane Water Tank with 0.12" Aluminum Bash Cover
Hot Water:	Instant Water Heater

CHASSIS

Drawbar/Chassis:	Hot Dipped Galvanized Tubular Steel made from RHS 4"x2", 0.15 Wall Thickness, 0.24" Supporting Plates for extra Strength & Durability
Independent Suspension:	Control Arm with Dual Shock Absorbers and Coil Springs
Tires:	265x75xR16 Off-Road Tires with Two Spare Tires
Wheels:	16" Alloy Wheels with a Black Powder Coated Finish
Brakes:	12" Electric Tow Brake with Mechanical Handbrake Breakaway System Include 2x Safety Chains 7 Pin Flat Plug
Connector:	50Amp Anderson Plug
Anderson Plug:	50Amp Anderson Plug
Hitch:	Black Series ADR Approved Off-Road Poly Block Hitch
Jockey Wheel:	Off-Road Swing Away 10" Jockey Wheel
Recovery Hooks:	2x Rear Facing Recovery Shackles

MEASUREMENTS

Internal Height	6.3ft
Internal Length	19ft
External Height	10.1ft
External Length	26.1ft
External Width	7.8ft
Net Weight	6733bs
Tongue Weight	1000lbs
GVWR	10000lbs



HQ21

The ultimate pinnacle of the HQ series. HQ21 flagship caravan adopts modern aerodynamic design, which is a perfect combination of elegance, strength, comfort, build quality and durability. This HQ21 campervan is in a league of its own. It is a game changer which brings a new benchmark to the industry. Experience the outback in luxury and confidence!



EXTERIOR

Materials:	Aluminum Composite Panels mounted with Aluminum Diamond Plating for added protection
Stone Guard/Skid Guard:	Adds Protection for Bottom Edge of Camper
Insulation:	R16 Insulation on Full Roof and Walls
Roof:	One Piece Aluminum and Roof Hatch with Shade
Windows:	Eurovision Windows with Fly Screen and Privacy Shades
Awning:	13ft Black Series Electrical Awning
Storage:	Pass through storage Front compartments for 2× Jerry Cans & 2× Propane Tanks
Pre-Table:	Lockable Fold Down Outdoor Table
Outdoor Kitchen:	Stainless Steel Slide Out Sink, Propane Burner Stove and Large Prep-Table
Shower:	Outdoor Shower

INTERIOR

Sleeping Configuration:	1×Queen Bed, Convertible Lounge and bunk Bed
En-suite Bathroom:	Separate private Bathroom and Shower
Lounge:	Dinette with Premium Faux Leather Seating and Adjustable Table. Convertible to sleeper
Kitchen:	Propane Stove, Sink, Microwave, and Fridge
Flooring:	Wood Vinyl
Cabinetry:	Modern white finish veneer
Leather:	High Quality Marine Graded Faux Leather
Screen Door:	Standard Screen Door

ELECTRICAL

Electrical System:	12V/110V Electrical System with 2,000 Watts Black Series Pure Sine Wave Inverter with a custom Black Series Camper, Inc. Control Panel
Battery:	400AH
Solar:	4x Roof Mounted 150 Watt Solar Panels
Internal Lighting:	LED Reading Lights in Bedroom and Lounge
External Lighting:	Wide Angle Side mounted LED Flood Lights. Mounted Front, Side and Rear LED Light Bars
Plugs:	Internal/External 12V Plugs
Shore Power:	30Amps
Control Panel:	Breakers, Digital Gages, & Electrical Power Readout

APPLIANCES/ACCESSORIES

Fridge:	6 cu. ft. Fridge/Freezer
Stove/ Oven:	Outdoor and Indoor Propane Stove
Rangehood:	Slim Twin Fan with Light Range Hood
Propane:	2× 20lbs Propane Tanks
Microwave:	6 Gal. Electrical Microwave with Four Operating Features
Furnace:	16,000 BTU Thermostat Control
Air Conditioning:	13,500 BTU Rooftop Air Conditioning Unit
Entertainment System:	CD/FM/IPOD/Bluetooth/USB Radio 2× Interior Speakers 2× Outdoor Marine Grade Speakers 2x24" TV
Antenna:	HD TV over the air antenna with built in sure-lock
Safety:	Fire Extinguisher, Smoke Alarm and Propane/CO Detector

PLUMBING

Shower:	Outdoor Shower & Interior Full Fiberglass Shower
Sink:	Large Interior Stainless Steel Sink and Outdoor Stainless Steel Drip Sink
Toilet:	Dometic Toilet
Water Tanks	
Drinking Water:	12 Gal. Triple Filtered System
Fresh Water:	64 Gal. Polyurethane Water Tank with 0.12" Aluminum Bash Cover
Grey Water:	26 Gal. Polyurethane Water Tank with 0.12" Aluminum Bash Cover
Black Water:	26 Gal. Polyurethane Water Tank with 0.12" Aluminum Bash Cover
Hot Water:	Instant Water Heater

CHASSIS

Drawbar/Chassis:	Hot Dipped Galvanized Tubular Steel made from RHS 4"x2", 0.15 Wall Thickness, 0.24" Supporting Plates for extra Strength & Durability
Independent Suspension:	Control Arm with Dual Shock Absorbers and Coil Springs
Tires:	265x75xR16 Off-Road Tires with Two Spare Tires
Wheels:	16" Alloy Wheels with a Black Powder Coated Finish
Brakes:	12" Electric Tow Brake with Mechanical Handbrake Breakaway System Include 2x Safety Chains
Connector:	7 Pin Flat Plug
Anderson Plug:	50Amp Anderson Plug
Hitch:	Black Series ADR Approved Off-Road Poly Block Hitch
Jockey Wheel:	Off-Road Swing Away 10" Jockey Wheel
Recovery Hooks:	2x Rear Facing Recovery Shackles

MEASUREMENTS

Internal Height	6.6ft
Internal Length	21ft
External Height	10.3ft
External Length	27ft
External Width	8.1ft
Net Weight	7242lbs
Tongue Weight	1000lbs
GVWR	10000lbs



TH19

The travel trailer TH19 is the best Toy Hauler of your journey in which every time you follow your hearts to enjoy a free and comfortable travel experience.



GARAGE

EXTERIOR

Materials:	Aluminum Composite Panels mounted with added Aluminum Diamond Plating for added protection
Stone Guard/Skid Guard:	Adds Protection for Bottom Edge of Camper
Insulation:	R16 Insulation on Full Roof and Walls
Roof:	One Piece Aluminum and Roof Hatch with Shade
Windows:	Eurovision Windows with Fly Screen and Privacy Shades
Awning:	13ft Black Series Electrical Awning
Storage:	Pass through Storage Front compartments for 2× Jerry Cans & 2× Propane Tanks
Prep-Table:	Lockable Fold Down Outdoor Table
Outdoor Kitchen:	Stainless Steel Slide Out Sink, Propane Burner Stove and Large Prep-Table
Shower:	Outdoor Shower

INTERIOR

Wet Bath:	Full Fiberglass shower enclosed with ventilation and Toilet
Kitchen:	Propane Stove with Cover for Preparation Area
Backsplash:	Grey Acrylic Full Height Splash-back
Sleeping Configuration:	1×Queen Bed and 4x Bunk Beds
Table:	Portable Adjustable Table
Flooring:	Wood Vinyl Living Area and Aluminum Diamond Plating Flooring in Garage
Cabinetry:	Modern 5-Star Timber Finish Veneer
Leather:	High quality marine graded faux leather
Screen Door:	Standard screen door

ELECTRICAL

Electrical System:	12V/110V Electrical System with 2,000 Watts Black Series Pure Sine Wave Inverter with a custom Black Series Control Panel
Battery:	200AH
Solar:	4x Roof Mounted 150 Watt Solar Panels
Internal Lighting:	LED Reading Lights in Bedroom and Lounge
External Lighting:	Wide Angle Side mounted LED Flood Lights Front, Side and Rear LED Light Bar
Plugs:	Internal/External 12V Plugs
Shore Power:	30Amps
Control Panel:	Breakers, Digital Gages, & Electrical Power Readout

Enclosed Garage:	Separate Lockable Door between Living and Garage
Flooring:	Aluminum Diamond Plate
Tie Down Hooks:	Multiple Hooks located throughout
Patio Configuration:	Back Door Converts to Patio with Tent Enclosure. 1600lb weight capacity
Ramp Capacity:	3,200lbs
Garage Dimensions:	L10' x W7' x H6.9'

APPLIANCES/ACCESSORIES

Fridge:	2.3 cu. ft. Fridge/Freezer
Stove:	Outdoor Propane and Indoor Propane Stove
Propane:	2× 20lbs Propane Tanks
Microwave:	6 Gal. Electrical Microwave with Four Operating Features
Rangehood:	Slim Twin Fan with Light Range Hood
Furnace:	16,000 BTU Thermostat Control
Air Conditioning:	13,500 BTU Rooftop Air Conditioning Unit
Entertainment System:	CD/FM/IPOD/Bluetooth/USB Radio 2× Interior Speakers 2× Outdoor Marine Grade Speakers 24" TV
Antenna:	HD TV over the air antenna with built in sure-lock
Safety:	Fire Extinguisher, Smoke Alarm and Propane/CO Detector

PLUMBING

Shower:	Outdoor Shower & Interior Full Fiberglass Shower
Sink:	Bathroom Vanity Sink and Outdoor Stainless Steel Drip Sink
Toilet:	Dometic Toilet
Water Tanks	
Drinking Water:	16 Gal. Triple Filtered System
Fresh Water:	64 Gal. Polyurethane Water Tank with 0.12" Aluminum Bash Cover
Grey Water:	26 Gal. Polyurethane Water Tank with 0.12" Aluminum Bash Cover
Black Water:	26 Gal. Polyurethane Water Tank with 0.12" Aluminum Bash Cover
Hot Water:	Instant Water Heater

CHASSIS

Drawbar/Chassis:	Hot Dipped Galvanized Tubular Steel made from RHS 4"x2", 0.15 Wall Thickness, 0.24" Supporting Plates for extra Strength & Durability
Independent Suspension:	Control Arm with Dual Shock Absorbers and Coil Springs
Tires:	235x75xR15 Off-Road Tires with one Spare Tire
Wheels:	15" Alloy Wheels with a Black Powder Coated Finish
Brakes:	12" Electric Tow Brake with Mechanical Handbrake Breakaway System Include 2x Safety Chains
Connector:	7 Pin Flat Plug
Anderson Plug:	50Amp Anderson Plug
Hitch:	Black Series ADR Approved Off-Road Poly Block Hitch
Jockey Wheel:	Off-Road Swing Away 10" Jockey Wheel
Recovery Hooks:	2x Rear Facing Recovery Shackles

MEASUREMENTS

Internal Height	7ft
External Height	10.2ft
Internal Length:	19ft
External Length	24.9ft
External Width	7.8ft
Dry Weight	6172lbs
Tongue Weight	900lbs
GVWR	9,000lbs



TH22

TH22 is the latest travel trailer of the Black Series RVs. The TH22 meets the goal of great build quality and durability set by Black Series, which can cope with the toughest roads, and make tired travelers rest well after arrival. It not only provides outdoor activities for motorcycles or all-terrain vehicles, but also has enough space for your family and friends.



EXTERIOR

Materials:	Aluminum Composite mounted with added Aluminum Diamond Plating for added protection
Stone Guard/Skid Guard:	Adds Protection for Bottom Edge of Camper
Insulation:	R16 Insulation on Full Roof and Walls
Roof:	One Piece Aluminum and Roof Hatch with Shade
Windows:	Eurovision Windows with Fly Screen and Privacy Shades
Awning:	13ft Black Series Electrical Awning
Storage:	Pass Through Storage Front Compartments for 2× Jerry Cans & 2× Propane Tanks Lockable Fold Down Outdoor Table
Prep-Table:	Stainless Steel Slide Out Sink, Propane Burner Stove and Large Prep-Table
Outdoor Kitchen:	Stainless Steel Slide Out Sink, Propane Burner Stove and Large Prep-Table
Shower:	Outdoor Shower

INTERIOR

Wet Bath:	Full Fiberglass shower enclosed with ventilation and Toilet
Kitchen:	Propane Stove with Cover for Preparation Area
Backsplash:	Grey Acrylic Full Height Splash-back
Sleeping Configuration:	1×Queen Bed and 4x Bunk Beds
Table:	Portable Adjustable Table
Flooring:	Wood Vinyl Living Area and Aluminum Diamond Plating Flooring in Garage
Cabinetry:	Modern 5-Star Timber Finish Veneer
Leather:	High Quality Marine Graded Faux Leather
Screen Door:	Standard Screen Door

ELECTRICAL

Electrical System:	12V/110V Electrical System with 2,000 Watts Black Series Pure Sine Wave Inverter with a custom Black Series Control Panel
Battery:	200AH
Solar:	4x Roof Mounted 150 Watt Solar Panels
Internal Lighting:	LED Reading Lights in Bedroom and Lounge
External Lighting:	Wide Angle Side mounted LED Flood Lights. Mounted front , side and rear LED Light Bar
Plugs:	Internal/External 12V Plugs
Shore Power:	30Amps
Control Panel:	Breakers, Digital Gages, & Electrical Power Readout

GARAGE

Enclosed Garage:	Separate Lockable Door between Living and Garage
Flooring:	Aluminum Diamond Plate
Tie Down Hooks:	Multiple Hooks located throughout
Patio Configuration:	Back Door Converts to Patio with Tent Enclosure. 1600lb weight capacity
Ramp Capacity:	3,200lbs
Garage Dimensions:	L13' x W7' x H7'

APPLIANCES/ACCESSORIES

Fridge:	2.3 cu. ft. Fridge/Freezer
Stove:	Outdoor Propane and Indoor Propane Stove
Propane:	2× 20lbs Propane Tanks
Microwave:	6 Gal. Electrical Microwave with Four Operating Features
Rangehood:	Slim Twin Fan with Light Range Hood
Furnace:	16,000 BTU Thermostat Control
Air Conditioning:	13,500 BTU Rooftop Air Conditioning Unit
Entertainment System:	CD/FM/IPOD/Bluetooth/USB Radio 2× Interior Speakers 2× Outdoor Marine Grade Speakers 24" TV
Antenna:	HD TV over the air antenna with built in sure-lock
Safety:	Fire Extinguisher, Smoke Alarm and Propane/CO Detector

PLUMBING

Shower:	Outdoor Shower & Interior Full Fiberglass Shower
Sink:	Interior Stainless Steel Sink and Outdoor Stainless Steel Drip Sink
Toilet:	Dometic Toilet
Water Tanks	
Drinking Water:	26 Gal. Triple Filtered System
Fresh Water:	2x26 Gal. Polyurethane Water Tank with 0.12" Aluminum Bash Cover
Grey Water:	26 Gal. Polyurethane Water Tank with 0.12" Aluminum Bash Cover
Black Water:	26 Gal. Polyurethane Water Tank with 0.12" Aluminum Bash Cover
Hot Water:	Instant Water Heater

CHASSIS

Drawbar/Chassis:	Hot Dipped Galvanized Tubular Steel made from RHS 4"x2", 0.15 Wall Thickness, 0.24" Supporting Plates for extra Strength & Durability
Independent Suspension:	Control Arm with Dual Shock Absorbers and Coil Springs
Tires:	235x75xR15 Off-Road Tires with one Spare Tire
Wheels:	15" Alloy Wheels with a Black Powder Coated Finish
Brakes:	12" Electric Tow Brake with Mechanical Handbrake Breakaway System Include 2x Safety Chains
Connector:	7 Pin Flat Plug
Anderson Plug:	50Amp Anderson Plug
Hitch:	Black Series ADR Approved Off-Road Poly Block Hitch
Jockey Wheel:	Off-Road Swing Away 10" Jockey Wheel
Recovery Hooks:	2x Rear Facing Recovery Shackles

MEASUREMENTS

Internal Height	6.8ft
External Height	10.5ft
Internal Length:	22.3ft
External Length	28.2ft
External Width	8ft
Dry Weight	6,503lbs
Tongue Weight	900lbs
GVWR	9,000lbs



CLASSIC 12

The CLASSIC12, which looks exactly like a Schweizer Messer, is equipped with a kitchen, bathroom and wet bath, which can meet the living needs of 3 people. This compact design is very suitable for weekend camping enthusiasts to start an adventure trip.



EXTERIOR

Materials:	Aluminum Compostie Panels mounted with added Aluminum Diamond Plating for added protection
Insulation:	R16 Insulation on Full Roof and Walls
Roof:	One Piece Aluminum
Design:	Easy Two Stage Pop-Top with Fold Out Bed Extension Enclosure
Pop-top:	Made of Polymer coated embeded canvas, with mesh screen windows
Windows:	Eurovision Windows with Fly Screen and Privacy Shades
Awning:	10ft Black Series Electrical Awning
Storage:	Large Pass-Through Storage Front Storage for 2× Jerry Cans & 2× Propane Tanks
Outdoor Kitchen:	Stainless Steel Slide Out Sink, Propane Burner Stove and Large Prep-Table
Shower:	Outdoor Shower

INTERIOR

Wet Bath:	Full Fiberglass shower enclosed with ventilation and Toilet
Lounge:	Dinette with Premium Faux Leather Seating
Table:	Adjustable Portable Table
Flooring:	Wood Vinyl
Sleeping Configuration:	Sleeps 3 1×King Bed Foldable Bunk Bed on Gas Struts
Cabinetry:	Modern 5-Star Timber Finish Veneer
Leather:	High quality marine graded faux leather
Screen Door:	Standard screen door

ELECTRICAL

Electrical System:	12V/ 110V Electrical System with 1,000 Watts Black Series Pure Sine Wave Inverter with a custom Black Series Control Panel
Battery:	100AH
Solar:	2x Roof Mounted 150 Watt Solar Panels
Internal Lighting:	LED Reading Lights in Bedroom and Lounge
External Lighting:	Wide Angle Side mounted LED Flood Lights Front, Side and Rear LED Light Bar
Plugs:	Internal/External 12V Plugs
Shore Power:	30Amps
Control Panel:	Breakers, Digital Gages, & Electrical Power Readout

APPLIANCES/ACCESSORIES

Fridge:	Portable Powered Cooler for Outdoor Storage Compartment
Stove:	Outdoor Propane Stove
Rangehood:	Slim Twin Fan with Light Range Hood
Propane:	2× 20lbs Propane Tanks
Furnace:	16,000 BTU Rooftop Air Conditioning Unit
Entertainment System:	CD/FM/IPOD/Bluetooth/USB Radio 2× Interior Speakers 2× Outdoor Marine Grade Speakers 24" TV
Antenna:	HD TV over the air antenna with vuilt in sure-lock
Safety:	Fire Extinguisher, Smoke Alarm and Propane/CO Detector

PLUMBING

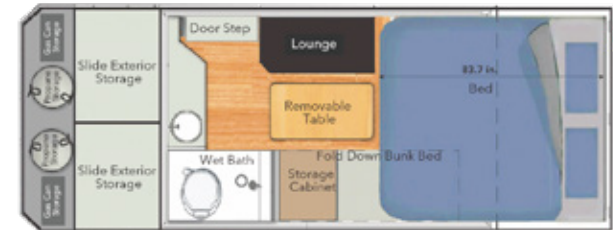
Shower:	Outdoor Shower with attachable Privacy Tent & Interior Full Fiberglass Shower enclosed with ventilation
Sink:	Large Interior Bowl Sink and Outdoor Stainless Steel Drip Sink
Toilet:	Dometic Toilet
Water Tanks	
Fresh Water:	26 Gal. Polyurethane Water Tank with 0.12" Aluminum Bash Cover
Grey Water:	16 Gal. Polyurethane Water Tank with 0.12" Aluminum Bash Cover
Black Water:	26 Gal. Polyurethane Water Tank with 0.12" Aluminum Bash Cover
Hot Water:	Instant Water Heater

CHASSIS

Drawbar/Chassis:	Hot Dipped Galvanized Tubular Steel made from RHS 4"x2", 0.15 Wall Thickness, 0.24" Supporting Plates for extra Strength & Durability
Independent Suspension:	Control Arm with Dual Shock Absorbers and Coil Springs
Tires:	265x75xR16 Off-Road Tires with Two Spare Tires
Wheels:	16" Alloy Wheels with a Black Powder Coated Finish
Brakes:	12" Electric Tow Brake with Mechanical Handbrake Breakaway System Include 2x Safety Chains
Connector:	7 Pin Flat Plug
Anderson Plug:	50Amp Anderson Plug
Jockey Wheel:	Off-Road Swing Away 10" Jockey Wheel
Recovery Hooks:	2x Rear Facing Recovery Shackles

MEASUREMENTS

Pop Top	+ 1.7ft
Internal Height	6.5ft(open)
	4.8ft(Close)
Internal Length	12ft
External Height	10.5ft(Open)
	8.8ft(Closed)
External Length	16ft
External Width	7.2ft
Net Weight	3218lbs
Tongue Weight	540lbs
GVWR	5400lbs



CLASSIC 15

The CLASSIC15 is equipped with a kitchen, bathroom and shower room, which can meet the living needs of 4 people.

This design is very suitable for weekend camping enthusiasts to start an adventure trip.



EXTERIOR

Materials:	Aluminum Compostie Panels mounted with added Aluminum Diamond Plating for added protection
Insulation:	R16 Insulation on Full Roof and Walls
Roof:	One Piece Aluminum
Design:	Easy Two Stage Pop-Top with Fold Out Bed Extension Enclosure
Pop-top:	Made of Polymer coated embeded canvas, with mesh screen windows
Windows:	Eurovision Windows with Fly Screen and Privacy Shades
Awning:	13ft Black Series Electrical Awning
Storage:	Large Pass-Through Storage 2× Slide out large storage with 12V Plug Front Storage for 2× Jerry Cans & 2× Propane Tanks
Outdoor Kitchen:	Stainless Steel Slide Out Sink, Propane Stove and Prep-Table
Shower:	Outdoor Shower with attachable Privacy Tent

INTERIOR

Wet Bath:	Full Fiberglass shower enclosed with ventilation and Toilet
Ventilation Fan:	12V Bathroom Fan with LED Lights
Stainless Steal Sink:	Large Sink with prep space
Lounge:	Dinette with Premium Faux Leather Seating with Adjustable Table
Flooring:	Wood Vinyl
Sleeping Configuration:	Sleeps 4 1×Large Bed 1×Foldable Down Bunk Bed on Gas Struts 1×Dinette Convertible Lounge
Cabinetry:	Modern 5-Star Timber Finish Veneer
Leather:	High quality marine graded faux leather
Screen Door:	Standard screen door

ELECTRICAL

Electrical System:	12V/ 110V Electrical System with 1,000 Watts Black Series Pure Sine Wave Inverter with a custom Black Series Control Panel
Battery:	200AH
Solar:	2x Roof Mounted 150 Watt Solar Panels
Internal Lighting:	LED Reading Lights in Bedroom and Lounge
External Lighting:	Wide Angle Side mounted LED Flood Lights Front, Side and Rear LED Light Bar
Plugs:	Internal/External 12V Plugs
Shore Power:	30Amps
Control Panel:	Breakers, Digital Gages, & Electrical Power Readout

APPLIANCES/ACCESSORIES

Fridge:	Portable Powered Cooler for Outdoor Storage Compartment
Stove:	Outdoor Propane Stove
Propane:	2× 20lbs Propane Tanks
Furnace:	16,000 BTU Rooftop Air Conditioning Unit
Air Conditioning:	13,500 BTU Rooftop Air Conditioning Unit
Entertainment System:	CD/FM/IPOD/Bluetooth/USB Radio 2× Interior Speakers 2× Outdoor Marine Grade Speakers 24" TV
Antenna:	HD TV over the air antenna with vuilt in sure-lock
Safety:	Fire Extinguisher, Smoke Alarm and Propane/CO Detector

PLUMBING

Shower:	Outdoor Shower with attachable Privacy Tent & Interior Full Fiberglass Shower enclosed with ventilation
Sink:	Large Interior Stainless Steel Sink and Outdoor Stainless Steel Drip Sink
Toilet:	Dometic Toilet
Water Tanks	
Fresh Water:	26 Gal. Polyurethane Water Tank with 0.12" Aluminum Bash Cover
Grey Water:	16 Gal. Polyurethane Water Tank with 0.12" Aluminum Bash Cover
Black Water:	26 Gal. Polyurethane Water Tank with 0.12" Aluminum Bash Cover
Hot Water:	Instant Water Heater

CHASSIS

Drawbar/Chassis:	Hot Dipped Galvanized Tubular Steel made from RHS 4"x2", 0.15 Wall Thickness, 0.24" Supporting Plates for extra Strength & Durability
Independent Suspension:	Control Arm with Dual Shock Absorbers and Coil Springs
Tires:	265x75xR16 Off-Road Tires with Two Spare Tires
Wheels:	16" Alloy Wheels with a Black Powder Coated Finish
Brakes:	12" Electric Tow Brake with Mechanical Handbrake Breakaway System Include 2x Safety Chains
Connector:	7 Pin Flat Plug
Anderson Plug:	50Amp Anderson Plug
Jockey Wheel:	Off-Road Swing Away 10" Jockey Wheel
Recovery Hooks:	2x Rear Facing Recovery Shackles

MEASUREMENTS

Internal Height	6.5ft(Open) 5ft(Closed)
Internal Length	15ft(Open) 12.5ft(Closed)
Internal Width	6.4ft
External Height	10.9ft(Open) 8.9ft(Closed)
External Length	23ft(Open) 20ft(Closed)
External Width	6.9ft
Net Weight	3968lbs
Tongue Weight	700lbs
GVWR	5379lbs



DOMINATOR

With its innovative ergonomic design, practical space, powerful off-road performance, efficient space utilization and excellent functional design, Dominator makes your journey very easy.



CAMPER

Tent:	Heavy Duty Tent Canvas Material with Rain Guard
Tent Lid:	Gas Struts and Mechanical Winch for Assistance in Lifting Tent Lid
Sleeping Configuration:	Sleeps 4 1 x Queen Size Bed 1 x Convertible Lounge
Lounge:	U-shape Lounge with Adjustable Table
Interior Finishes:	Modern Wood Finish with Storage
Awning/Annex:	Additional Attachable Awning and Fully Enclosed Annex Set Up with roof, walls, floor, poles and pegs.
Poles:	Strong Adjustable Tent & Annex Poles
Tent Windows:	Windows come with Mesh Bug Screens and Roll Up Ties
Front Rock Guard/Storage:	Steel Bash Box for added protection with: 2x Jerry Can Holders , 2x Propane Holders
Outdoor Kitchen:	Stainless Steel Slide Out Drip Sink, Propane Burner Stove, Drying Rack
Storage:	Slide Out Large storage with 12V Plug for Electric Cooler Various Size Storage Compartments
Boat Rack:	220lbs Distributed Weight Rating

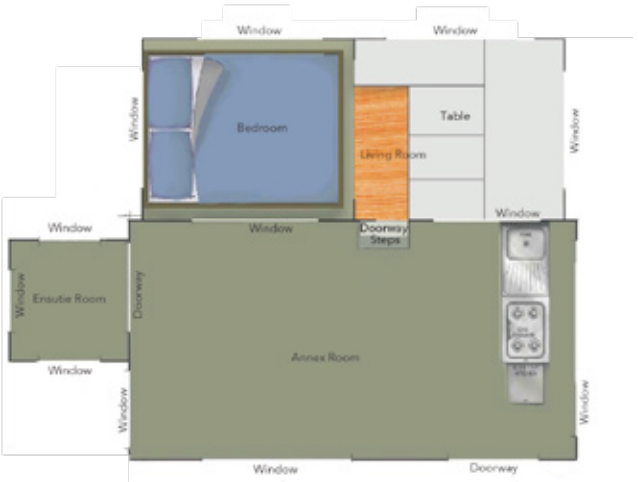
CHASSIS

Trailer/Chassis:	Zincanneal Treated Steel and Hot Dipped Galvanized Tubular Steel made from RHS 4"x2", 0.15 Wall Thickness, 0.24" Supporting Plates for extra Strength and Durability
Stabilizer Legs:	4x Heavy Duty Lockable & Adjustable Legs
Independent Suspension:	Control Arm with Dual Shock Absorbers and Coil Springs
Tires:	2x265x75xR16 Off-Road Tires with Two Spare Tires
Wheels:	16" Alloy Wheels with a Black Powder Coated Finish
Brakes:	12" Electric Tow Brake with Mechanical Handbrake Breakaway System Include 2x Safety Chains
Connector:	7 Pin Flat Plug
Anderson Plug:	50Amp Anderson Plug
Hitch:	Black Series ADR Approved Off-Road Poly Block Hitch
Jokey Wheel:	Off-Road Swing Away 8" Jockey Wheel
Recovery Hooks:	2x 9,000lbs Rear Facing Recovery Shackles

ACCESSORIES

Battery:	200AH
Electrical:	12V/110V Electrical System with 1,000 Watts Inverter with custom Black Series Control Panel
Portable Solar Panel:	1x 120 Watt Solar Panel Briefcase Style
Recovery Tracks:	2x Tracks
Lights:	LED Interior Lights Strips and LED Submersible Tail Lights, Name Plate Lights & Clearance Lights
Toilet:	Dometic Toilet
Shower:	Portable Shower

MEASUREMENTS	
General Water	31.7 Gal. Water Tank
Annex Length	14.7ft.
Annex Width	7.8ft.
Tent Length	13ft.
Tent Width	6ft.
Trailer Length	17.39ft.
Trailer Width	6.17ft.
Trailer Height	5.25ft.
Net Weight	2,740lbs.
Tongue Weight	440lbs.
GVWR	4,400lbs.



PATRON

It has an impressive carrying capacity and is suitable for family or long-haul travel. The trailer is tough and practical, ready for your journey at all times. The Black Series' specially designed independent suspension and galvanized towbar can cope with the most rugged terrain.



CAMPER

Tent:	Heavy Duty Tent Canvas Material with Rain Guard
Tent Lid:	Gas Struts and Mechanical Winch for Assistance in Lifting Tent Lid
Sleeping Configuration:	Sleeps 5 1 x Queen Size Bed 1 x Slide Out Queen Bed 1 x Convertible Lounge
Lounge:	U-shape Lounge with Adjustable Table
Interior Finishes:	Modern Wood Finish with Storage
Awning/Annex:	Additional Attachable Awning and Fully Enclosed Annex Set Up with roof, walls, floor, poles and pegs
Poles:	Strong Adjustable Tent & Annex Poles
Tent Windows:	Windows come with Mesh Bug Screens and Roll Up Ties
Front Rock Guard/Storage:	Steel Bash Box for added protection with: 2x Jerry Can Holders 2x Propane Holders
Outdoor Kitchen:	Stainless Steel Slide Out Drip Sink, Propane Burner Stove and Large Prep Area
Storage:	Slide Out Large storage with 12V Plug for Electric Cooler Various Size Storage Compartments
Boat Rack:	220lbs Distributed Weight Rating

CHASSIS

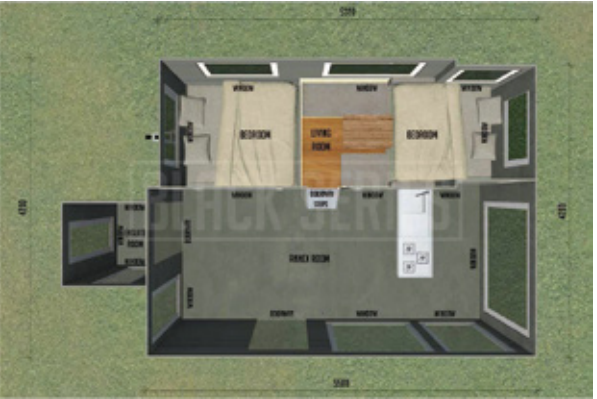
Trailer/Chassis:	Zincanneal Treated Steel and Hot Dipped Galvanized Tubular Steel made from RHS 4"x2", 0.15 Wall Thickness, 0.24" Supporting Plates for extra Strength and Durability.
Stabilizer Legs:	4x Heavy Duty Lockable & Adjustable Legs
Independent Suspension:	Control Arm with Dual Shock Absorbers and Coil Springs
Tires:	2x265x75xR16 Off-Road Tires with Two Spare Tires
Wheels:	16" Alloy Wheels with a Black Powder Coated Finish
Brakes:	12" Electric Tow Brake with Mechanical Handbrake Breakaway System Include 2x Safety Chains
Connector:	7 Pin Flat Plug
Anderson Plug:	50Amp Anderson Plug
Hitch:	Black Series ADR Approved Off-Road Poly Block Hitch
Jokey Wheel:	Off-Road Swing Away 8" Jockey Wheel
Recovery Hooks:	2x 9,000lbs Rear Facing Recovery Shackles

ACCESSORIES

Battery:	200AH
Electrical:	12V/110V Electrical System with 1,000 Watts Inverter with custom Black Series Control Panel
Portable Solar Panel:	1x 120 Watt Solar Panel Briefcase Style
Recovery Tracks:	2x Tracks
Lights:	LED Interior Lights Strips and LED Submersible Tail Lights, Name Plate Lights & Clearance Lights
Toilet:	Dometic Toilet
Shower:	Portable Shower

MEASUREMENTS

General Water	32 Gal. Water Tank
Annex Length	15.4ft.
Annex Width	8.2ft.
Tent Length	16ft.
Tent Width	6ft.
Trailer Length	17.39ft.
Trailer Width	6.17ft.
Trailer Height	5.25ft.
Net Weight	2,977lbs.
Tongue Weight	440lbs.
GVWR	4,400lbs.



CLASSIC DOUBLE

With its great appearance, advanced design and high build quality, it has set an industry benchmark among hard-floor trailers. You will be surprised to find that the Black Series can set up multiple living and sleeping areas in one tent camp. Compared with other Black Series tent trailers, it has a slightly longer body.



CAMPER

Tent:	Heavy Duty Tent Canvas Material with Rain Guard
Tent Lid:	Gas Struts and Mechanical Winch for Assistance in Lifting Tent Lid
Sleeping Configuration:	Sleeps 6 2 x Queen Size Bed Large Convertible Lounge
Lounge:	Large Lounge with 2x Adjustable Table
Interior Finishes:	Modern Wood Finish with Storage
Awning/Annex:	Additional Attachable Awning and Fully Enclosed Annex Set Up with roof, walls, floor, poles and pegs
Poles:	Strong Adjustable Tent & Annex Poles
Tent Windows:	Windows come with Mesh Bug Screens and Roll Up Ties
Front Rock Guard/Storage:	Steel Bash Box for added protection with: 2x Jerry Can Holders 2x Propane Holders
Outdoor Kitchen:	Stainless Steel Slide Out Drip Sink, Propane Burner Stove, and Large Prep Area
Storage:	Slide Out Large storage with 12V Plug for Electric Cooler Various Size Storage Compartments
Boat Rack:	220lbs Distributed Weight Rating

CHASSIS

Trailer/Chassis:	Zincaneal Treated Steel and Hot Dipped Galvanized Tubular Steel made from RHS 4"x2", 0.15 Wall Thickness, 0.24" Supporting Plates for extra Strength and Durability
Stabilizer Legs:	4x Heavy Duty Lockable & Adjustable Legs
Independent Suspension:	Independent Suspension: Control Arm with Dual Shock Absorbers and Coil Springs
Tires:	2x265x75xR16 Off-Road Tires with Two Spare Tires
Wheels:	16" Alloy Wheels with a Black Powder Coated Finish
Brakes:	12" Electric Tow Brake with Mechanical Handbrake Breakaway System Include 2x Safety Chains
Connector:	7 Pin Flat Plug
Anderson Plug:	50Amp Anderson Plug
Hitch:	Black Series ADR Approved Off-Road Poly Block Hitch
Jokey Wheel:	Off-Road Swing Away 8" Jockey Wheel
Recovery Hooks:	2x 9,000lbs Rear Facing Recovery Shackles

ACCESSORIES

Battery:	200AH
Electrical:	12V/110V Electrical System with 1,000 Watts Inverter with custom Black Series Control Panel
Portable Solar Panel:	1x 120 Watt Solar Panel Briefcase Style
Recovery Tracks:	2x Tracks
Lights:	LED Interior Lights Strips and LED Submersible Tail Lights, Name Plate Lights & Clearance Lights
Toilet:	Dometic Toilet
Shower:	Portable Shower

MEASUREMENTS

General Water	2x 24Gal. Water Tank
Annex Length	20ft.
Annex Width	7.8ft.
Tent Length	20ft.
Tent Width	6.5ft.
Trailer Length	18.44ft.
Trailer Width	6.56ft.
Trailer Height	4.92ft.
Net Weight	4,277lbs.
Tongue Weight	485lbs.
GVWR	4,850lbs.



CUSTOMER SERVICES

NEWLY PURCHASED MODELS ENJOY ONE-YEAR WARRANTY SERVICE

All newly purchased Black Series commercial vehicles sold by authorized dealers of Black Series enjoy one-year warranty service from the date of purchase, and the offline after-sales stations of the Black Series will provide you with considerate maintenance services.

15-YEAR WARRANTY ON CHASSIS AND BODY FRAME AND BODY FRAME

The Black Series camper bodies are made by high-performance composite materials and innovative structural design to improve durability. The chassis and body frame enjoys a 15-year warranty.

PRODUCT EXTENDED WARRANTY SERVICES

Black Series provides professional extended warranty service for you to enjoy 100% original Black Series quality guarantee.

ON CHASSIS AND BODY FRAME



Note: The up-to-date specification is subject to the actual RV

