

LANCE



Model 1995 Shown W/Optional Equipment

LANCE



Model 1995 Shown W/Optional Equipment



GO NOW, BECAUSE LATER HAS A BAD HABIT OF BECOMING NEVER....

Amid the uncertainty, one thing you can count on is the distractions that keep us away from doing the things we love, have been greater than ever. Right or wrong, we often give these distractions priority in our lives. The last couple of years have taught us many things, one being we can work and play while being socially responsible from almost anywhere in this great country. All we need are the right tools for the task. Since 1965, Lance Camper has been building some of the highest quality memory-making tools in the business.

Please enjoy your time reviewing our 2022 product lineup, we are excited to be able to bring you what we consider our best yet!

So, let's spend this season and beyond making more memories with the ones we love.....



Superior Quality



Readers' Favorite



Industry Leading Innovation



Cutting Edge Design



Top Floor Plan





GO NOW, BECAUSE LATER HAS A BAD HABIT OF BECOMING NEVER....

Amid the uncertainty, one thing you can count on is the distractions that keep us away from doing the things we love, have been greater than ever. Right or wrong, we often give these distractions priority in our lives. The last couple of years have taught us many things, one being we can work and play while being socially responsible from almost anywhere in this great country. All we need are the right tools for the task. Since 1965, Lance Camper has been building some of the highest quality memory-making tools in the business.

Please enjoy your time reviewing our 2022 product lineup, we are excited to be able to bring you what we consider our best yet!

So, let's spend this season and beyond making more memories with the ones we love.....



Superior Quality



Readers' Favorite



Industry Leading Innovation



Cutting Edge Design



Top Floor Plan





Not actual photo. Visit our website for most accurate product information and imagery.



1995 shown in Grayson

1995 shown in Bronzite



Not actual photo. Visit our website for most accurate product information and imagery.

1995 shown in Bronzite



Not actual photo. Visit our website for most accurate product information and imagery.

1995 shown in Lapis



Not actual photo. Visit our website for most accurate product information and imagery.

1995 shown in Lapis



Not actual photo. Visit our website for most accurate product information and imagery.

SPECIFICATIONS, STANDARDS & OPTIONS

	1475	1575	1685	1985	1995	2075	2185	2285	2375	2445	2465
Floor Length	14' 10"	15' 9"	16' 6"	18' 9"	19' 2"	20' 3"	21' 2"	22' 6"	23' 6"	24' 11"	24' 11"
Overall Length	19' 8"	20' 5"	21' 5"	23' 8"	24' 1"	25' 0"	26' 1"	27' 5"	28' 5"	29' 10"	29' 10"
Width (Exterior)	84 3/8"	84 3/8"	96 3/8"	96 3/8"	96 3/8"	96 3/8"	96 3/8"	96 3/8"	96 3/8"	96 3/8"	96 3/8"
Height (Exterior) STD. A/C	10' 4"	10' 4"	10' 4"	10' 5"	10' 5"	10' 5"	10' 5"	10' 5"	10' 7"	10' 7"	10' 7"
Height (Interior)	80"	80"	80"	80"	80"	80"	80"	80"	80"	80"	80"
Dry Weight* – Overall Weight	2600*	2775*	4620	4965	4950	5055*	5220*	5775	5830*	6375*	6730*
Axle Weight* – Towed Weight	2350*	2530*	4080	4305	4450	4505*	4355*	4990	5080*	5700*	5920*
Hitch Weight* – Hauled Weight	250*	245*	540	660	500	550*	865*	785	750*	675*	810*
Cargo Capacity* – Gear	1100*	925*	1680	2035	2050	1945*	2580*	2225	2570*	2125*	1870*
Available Axle Capacity**	1150*	970*	2920	2695	2550	2495*	3445*	2810	3720*	3100*	2880*
GAWR (Per Axle)	3500	3500	3500	3500	3500	3500	3900	3900	4400	4400	4400
GVWR	3700	3700	6300	7000	7000	7000	7800	8000	8400	8500	8600
Fresh Tank (Gal)	26	26	45	45	45	45	45	45	45	45	45
Gray Tank (Gal)	26	26	40	40	40	40	40	2/40	40	2/40	40
Black Tank (Gal)	26	26	40	40	40	40	40	40	40	40	40
Propane Tank (#/Gal)	1/5	1/5	3/5	3/5	3/5	3/5	3/5	3/5	3/5	3/5	3/5
Furnace BTU	14.3K	14.3K	25K	25K	25K	14.3K	25K	25K	25K	35K	35K
Converter / Loadcenter (AMP)	45	45	60	60	60	60	60	60	60	60	60
Sleeping Capacity (Min./Opt. Max.)	2/3	4	4	4	4	4	7	6*	4/5	8	5
Convertible Dinette Bed	Opt. 36" x 59"	46" x 78"	54" x 78"	54" x 78"	54" x 78"	40" x 80"	54" x 78"	54" x 78"	42" x 78"	42" x 78"	42" x 70"
Master Bed Size	60" X 80"	60" X 80"	60" X 80"	60" X 80"	60" X 80"	60" X 80"	60" X 80"	60" X 80"	60" X 80"	60" X 80"	72" x 80

* Estimates

** When looking at cargo capacity you must consider the hitch weight of the trailer and axle capacity. Hitch weight is actually being hauled while the remaining Trailer weight on the axle(s) is being towed. Example if a trailer has a total weight of 4000 pounds with a 400 pound hitch weight that would mean 3600 pounds is on the axle(s). If the axle weight rating is 5200 for this unit you will have 1600 of axle capacity for cargo



1475



Optional
Slide-Out
w/Couch Bed
Size 36" x 59"



1575



1685

SPECIFICATIONS, STANDARDS & OPTIONS

	1475	1575	1685	1985	1995	2075	2185	2285	2375	2445	2465
Floor Length	14' 10"	15' 9"	16' 6"	18' 9"	19' 2"	20' 3"	21' 2"	22' 6"	23' 6"	24' 11"	24' 11"
Overall Length	19' 8"	20' 5"	21' 5"	23' 8"	24' 1"	25' 0"	26' 1"	27' 5"	28' 5"	29' 10"	29' 10"
Width (Exterior)	84 3/8"	84 3/8"	96 3/8"	96 3/8"	96 3/8"	96 3/8"	96 3/8"	96 3/8"	96 3/8"	96 3/8"	96 3/8"
Height (Exterior) STD. A/C	10' 4"	10' 4"	10' 4"	10' 5"	10' 5"	10' 5"	10' 5"	10' 5"	10' 7"	10' 7"	10' 7"
Height (Interior)	80"	80"	80"	80"	80"	80"	80"	80"	80"	80"	80"
Dry Weight* – Overall Weight	2600*	2775*	4620	4965	4950	5055*	5220*	5775	5830*	6375*	6730*
Axle Weight* – Towed Weight	2350*	2530*	4080	4305	4450	4505*	4355*	4990	5080*	5700*	5920*
Hitch Weight* – Hauled Weight	250*	245*	540	660	500	550*	865*	785	750*	675*	810*
Cargo Capacity* – Gear	1100*	925*	1680	2035	2050	1945*	2580*	2225	2570*	2125*	1870*
Available Axle Capacity**	1150*	970*	2920	2695	2550	2495*	3445*	2810	3720*	3100*	2880*
GAWR (Per Axle)	3500	3500	3500	3500	3500	3500	3900	3900	4400	4400	4400
GVWR	3700	3700	6300	7000	7000	7000	7800	8000	8400	8500	8600
Fresh Tank (Gal)	26	26	45	45	45	45	45	45	45	45	45
Gray Tank (Gal)	26	26	40	40	40	40	40	2/40	40	2/40	40
Black Tank (Gal)	26	26	40	40	40	40	40	40	40	40	40
Propane Tank (#/Gal)	1/5	1/5	3/5	3/5	3/5	3/5	3/5	3/5	3/5	3/5	3/5
Furnace BTU	14.3K	14.3K	25K	25K	25K	14.3K	25K	25K	25K	35K	35K
Converter / Loadcenter (AMP)	45	45	60	60	60	60	60	60	60	60	60
Sleeping Capacity (Min./Opt. Max.)	2/3	4	4	4	4	4	7	6*	4/5	8	5
Convertible Dinette Bed	Opt. 36" x 59"	46" x 78"	54" x 78"	54" x 78"	54" x 78"	40" x 80"	54" x 78"	54" x 78"	42" x 78"	42" x 78"	42" x 70"
Master Bed Size	60" X 80"	60" X 80"	60" X 80"	60" X 80"	60" X 80"	60" X 80"	60" X 80"	60" X 80"	60" X 80"	60" X 80"	72" x 80"

* Estimates

** When looking at cargo capacity you must consider the hitch weight of the trailer and axle capacity. Hitch weight is actually being hauled while the remaining Trailer weight on the axle(s) is being towed. Example if a trailer has a total weight of 4000 pounds with a 400 pound hitch weight that would mean 3600 pounds is on the axle(s). If the axle weight rating is 5200 for this unit you will have 1600 of axle capacity for cargo



1475



Optional
Slide-Out
w/Couch Bed
Size 36" x 59"



1575



1685



1985



1995



2075



2185



2285



Sofa Bed Size
36" x 63"



2375

Optional Sofa Bed
Size 49" x 68"



2445

Optional
Exterior
Kitchen



2465



1985



1995



2075



2185



2285



2375



2445



2465

SPECIFICATIONS, STANDARDS & OPTIONS

	1475	1575	1685	1985	1995	2075	2185	2285	2375	2445	2465	Weight (lbs.)
EXTERIOR												
Mountain Scene Graphics	0	0	0	0	0	0	0	0	0	0	0	
Laminated Fiberglass Bonded Exterior w/Azdel Substrate	•	•	•	•	•	•	•	•	•	•	•	
Powdercoated 1" Beam Steel Chassis			•	•	•	•	•	•	•	•	•	
Leaf Spring Suspension W/Road Armor Equalizer			•	•	•	•	•	•	•	•	•	
Shock Absorber Package			0	0	0	0	0	0	0	0	0	TBD
Powdercoated Lightweight Huck Bolted Chassis	•	•										
Heavy Duty Rubber Tortion Bar Suspension Axle	•	•										
Manual Stabilizer Jacks w/Foot Pad	•	•										
Electric Stabilizer Jacks w/Foot Pad			•	•	•	•	•	•	•	•	•	
Electric Smart Tongue Jack												
W/Car Cord/Safety Chain Storage Holder	•	•	•	•	•	•	•	•	•	•	•	
Hitch Ball Size	2"	2"	2 1/8"	2 1/8"	2 1/8"	2 1/8"	2 1/8"	2 1/8"	2 1/8"	2 1/8"	2 1/8"	
Aluminum Wheels W/Goodyear Radial Tires	15"	15"	15"	15"	15"	15"	15"	15"	15"	15"	15"	
Spare Tire Carrier W/Rim & Tire	•	•	•	•	•	•	•	•	•	•	•	
Lightweight Hybrid Double Step - 24" (* 2 ea.)			•	•	•	•	•	•	•	•	•	
W/LED Courtesy Lighting			•	•	•	•	•	•	•	•	•	
Glow-Step Revolution - 25"	0	0	0	0	0	0	0	0	0	0	0	17
Molded Fiberglass Front Cap W/TPO Gravel Guard and Propane Cover	•	•	•	•	•	•	•	•	•	•	•	
Formed Jewel LED Docking Lights	•	•	•	•	•	•	•	•	•	•	•	
Rear TPO Eyebrow w/Formed Vertical Side Pillars and Integrated LED Lighting			•	•	•	•	•	•	•	•	•	
Radius Acrylic Tinted Thermopane Euro Windows W/Combo Screen/Blackout Shades	•	•	•	•	•	•	•	•	•	•	•	
Large Opening Stargazer Acrylic Tinted Thermopane Front Euro Window	•	•	•	•	•	•	•	•	•	•	•	
Slide-Out End Wall Window(s)			•	•	•	•	•	•	•	•	•	
Phat Ladder (Thule Telescoping Ladder 2075 Model)			•	•	•	•	•	•	•	•	•	
Roof Rack System			0	0	0	0	0	0	0	0	0	35
Radius Cornered Storage Compartment Doors	•	•	•	•	•	•	•	•	•	•	•	
Slam Latch on Forward Storage Compartment Doors			•	•	•	•	•	•	•	•	•	
Keyed-Alike Storage Compartment Doors	•	•	•	•	•	•	•	•	•	•	•	
Euro Radius Entry Door W/Insulated Window, Pull Shade & Retractable Screen	•	•	•	•	•	•	•	•	•	•	•	
Roof Vent in Bed Area (Fantastic Fan)	•	•	•	•	•	•	•	•	•	•	•	
Roof Vent in Living Area	•	•	•	•	•	•	•	•	•	•	•	
Skylight in Galley/Dinette Area	•	•	•	•	•	•	•	•	•	•	•	
MIDI Skylight Vent in Dinette						•						
Exterior Wash Station	•	•	•	•	•	•	•	•	•	•	•	
Exterior Kitchen						0				0		178/79
Exterior Propane Connection	•	•	•	•	•	•	•	•	•	•	•	
48" Portable Folding Table w/Built-In Exterior Storage Feature			•	•	•	•	•	•	•	•	•	
Exterior TV Mounting Puck W/Removable Bracket	•	•	•	•	•	•	•	•	•	•	•	
2" Utility Receiver (300lb Limit)	•	•	•	•	•	•	•	•	•	•	•	
Swing-Out Entry Assist Handle	•	•	•	•	•	•	•/2	•/2	•/2	•	•	
Pull-Out Storage Tray (MorRyde)	•	•	•	•	•	•	•	•	•	•	•	
Awning Slide-Out Cover		0	0	0	0		0	0	0	0	0	16-32
Electric Awning 7' 2" Rear W/LED Lighting						0						TBD
Electric Awning 12' 0" w/LED Lighting	•	•	•									
Electric Awning 16' 0" w/LED Lighting				•	•	•	•					
Electric Awning 19' 0" w/LED Lighting								•	•	•	•	
Backup Camera w/Wireless Monitor	0	0	0	0	0	0	0	0	0	0	0	2

Due to supply-chain issues, certain features shown may have limited or late availability, been substituted or are no longer available. Please see your dealer and the actual unit regarding the features on an individual travel trailer.

	1475	1575	1685	1985	1995	2075	2185	2285	2375	2445	2465	Weight (lbs.)
Portable Generator Storage Compartment w/Tie-Downs and Security Toy Lock			•	•	•	•	•	•	•	•	•	
Power Cord/Water Hose Storage Compartment			•	•	•	•	•	•	•	•	•	

CONSTRUCTION/INSULATION

One-Piece Roof (PVC)	•	•	•	•	•	•	•	•	•	•	•	
Exterior Tapered Ducted Air Roof Design (1475 & 1575 Remain Non-Ducted)	•	•	•	•	•	•	•	•	•	•	•	
CNC Cut & Laminated Floor/ Ceiling W/ Aluminum Frame & Block Foam Insulation	•	•	•	•	•	•	•	•	•	•	•	
Azdel Interior Panel Walls	•	•	•	•	•	•	•	•	•	•	•	
4 Seasons Comfort Technology Package	•	•	•	•	•	•	•	•	•	•	•	
-Enclosed Underbelly Design W/Insulated and Heated Holding Tanks	•	•	•	•	•	•	•	•	•	•	•	
-Insulated Hatch Covers	•	•	•	•	•	•	•	•	•	•	•	
-Water Heater Bypass and Winterizing Valve (*WH Bypass Valve)	•	•	•	•	•	•	•	•	•	•	•	

INTERIOR/DECOR

Interior - Grayson	0	0	0	0	0	0	0	0	0	0	0	
Interior - Bronzite	0	0	0	0	0	0	0	0	0	0	0	
Interior - Lapis	0	0	0	0	0	0	0	0	0	0	0	
Sofa Bed w/Kick Out Foot Rests												
Sofa Bed (Slide-Out)	0											185
J-Lounge								0				98
Swivel Rockers (1 Swivel Rocker / 1 Swivel Only - 1475 Model)	•/2							0/2	•/2			20
Solid Surface Galley Area Countertop and Extensions *Where Applicable	•	•	•	•	•	•	•	•	•	•	•	
Hardwood Flat Panel Cabinet Doors	•	•	•	•	•	•	•	•	•	•	•	
Radius "Euro" Overhead Cabinet Doors W/Decorative Pulls & LED Lighting	•	•	•	•	•	•	•	•	•	•	•	
Euro-Ply Cabinet Construction	•	•	•	•	•	•	•	•	•	•	•	
Hidden Trash Can Compartment								•	•	•	•	
Wall Clock & Key Hanger	•	•	•	•	•	•	•	•	•	•	•	

GALLEY/APPLIANCES & EQUIPMENT

"Flush Mount" Stainless Steel 3-Burner Range W/ 21" Oven (17" 1575 Model)	•	•	•	•	•		•	•	•	•	•	
"Flush Mount" 2-Burner Stainless Steel Euro Cooktop w/Glass Cover							•					
Stainless Steel Microwave Oven	•	•	•	•	•	•	•	•	•	•	•	
Refrigerator 2-Way Double Door (Norcold 6 Cu. Ft.)			•	•	•		•	•	•	•	•	
Refrigerator 3-Way Double Door (Norcold 5 Cu. Ft.)	•	•					•					
Galley Single Stainless Steel Sink (Round) W/Residential Single Lever Pullout Sprayer							•					
Single "Undermount" Sink (Round) W/Residential Single Lever Pullout Sprayer	•	•										
Residential "Undermount" Large Farm Single Sink W/Residential Single Lever Pullout Sprayer			•	•	•		•	•	•	•	•	
Sink Cover(s)	•	•	•	•	•		•	•	•	•	•	

FRESH AND WASTE WATER SYSTEMS

Water Pump W/In-Line Filter Residential Demand System	•	•	•	•	•	•	•	•	•	•	•	
Water Heater Gas/Electric/ Auto Lite -DSI			•	•	•		•	•	•	•	•	

SPECIFICATIONS, STANDARDS & OPTIONS

	1475	1575	1685	1985	1995	2075	2185	2285	2375	2445	2465	Weight (lbs.)
EXTERIOR												
Mountain Scene Graphics	0	0	0	0	0	0	0	0	0	0	0	
Laminated Fiberglass Bonded Exterior w/Azdel Substrate	•	•	•	•	•	•	•	•	•	•	•	
Powdercoated "I" Beam Steel Chassis			•	•	•	•	•	•	•	•	•	
Leaf Spring Suspension W/Road Armor Equalizer			•	•	•	•	•	•	•	•	•	
Shock Absorber Package			0	0	0	0	0	0	0	0	0	TBD
Powdercoated Lightweight Huck Bolted Chassis	•	•										
Heavy Duty Rubber Tortion Bar Suspension Axle	•	•										
Manual Stabilizer Jacks w/Foot Pad	•	•										
Electric Stabilizer Jacks w/Foot Pad			•	•	•	•	•	•	•	•	•	
Electric Smart Tongue Jack W/Car Cord/Safety Chain Storage Holder	•	•	•	•	•	•	•	•	•	•	•	
Hitch Ball Size	2"	2"	2 5/16"	2 5/16"	2 5/16"	2 5/16"	2 5/16"	2 5/16"	2 5/16"	2 5/16"	2 5/16"	
Aluminum Wheels W/Goodyear Radial Tires	15"	15"	15"	15"	15"	15"	15"	15"	15"	15"	15"	
Spare Tire Carrier W/Rim & Tire	•	•	•	•	•	•	•	•	•	•	•	
Lightweight Hybrid Double Step - 24" (* 2 ea.) W/LED Courtesy Lighting	•	•	•	•	•	•	•*	•*	•*	•	•	
Glow-Step Revolution - 25"	0	0	0	0	0	0	0	0	0	0	0	17
Molded Fiberglass Front Cap W/TPO Gravel Guard and Propane Cover	•	•	•	•	•	•	•	•	•	•	•	
Formed Jewel LED Docking Lights	•	•	•	•	•	•	•	•	•	•	•	
Rear TPO Eyebrow w/Formed Vertical Side Pillars and Integrated LED Lighting			•	•	•	•	•	•	•	•	•	
Radius Acrylic Tinted Thermopane Euro Windows W/Combo Screen/Blackout Shades	•	•	•	•	•	•	•	•	•	•	•	
Large Opening Stargazer Acrylic Tinted Thermopane Front Euro Window	•	•	•	•	•	•	•	•	•	•	•	
Slide-Out End Wall Window(s)			•	•	•		•	•	•	•	•	
Phat Ladder (Thule Telescoping Ladder 2075 Model)			•	•	•	•	•	•	•	•	•	
Roof Rack System			0	0	0	0	0	0	0	0	0	35
Radius Cornered Storage Compartment Doors	•	•	•	•	•	•	•	•	•	•	•	
Slam Latch on Forward Storage Compartment Doors			•	•	•	•	•	•	•	•	•	
Keyed-Alike Storage Compartment Doors	•	•	•	•	•	•	•	•	•	•	•	
Euro Radius Entry Door W/Insulated Window, Pull Shade & Retractable Screen	•	•	•	•	•	•	•	•	•	•	•	
Roof Vent in Bed Area (Fantastic Fan)	•	•	•	•	•	•	•	•	•	•	•	
Roof Vent in Living Area	•	•	•	•	•	•	•	•	•	•	•	
Skylight in Galley/Dinette Area	•	•	•	•	•	•	•	•	•	•	•	
MIDI Skylight Vent in Dinette						•						
Exterior Wash Station	•	•	•	•	•	•	•	•	•	•	•	
Exterior Kitchen						0				0		178/79
Exterior Propane Connection	•	•	•	•	•	•	•	•	•	•	•	
48" Portable Folding Table w/Built-In Exterior Storage Feature			•	•	•	•	•	•	•	•	•	
Exterior TV Mounting Puck W/Removable Bracket	•	•	•	•	•	•	•	•	•	•	•	
2" Utility Receiver (300lb Limit)	•	•	•	•	•	•	•	•	•	•	•	
Swing-Out Entry Assist Handle	•	•	•	•	•	•	•/2	•/2	•/2	•	•	
Pull-Out Storage Tray (MorRyde)	•	•	•	•	•	•	•	•	•	•	•	
Awning Slide-Out Cover		0	0	0	0		0	0	0	0	0	16-32
Electric Awning 7' 2" Rear W/LED Lighting						0						TBD
Electric Awning 12' 0" w/LED Lighting	•	•	•									
Electric Awning 16' 0" w/LED Lighting				•	•	•	•					
Electric Awning 19' 0" w/LED Lighting								•	•	•	•	
Backup Camera w/Wireless Monitor	0	0	0	0	0	0	0	0	0	0	0	2

Due to supply-chain issues, certain features shown may have limited or late availability, been substituted or are no longer available. Please see your dealer and the actual unit regarding the features on an individual travel trailer.

	1475	1575	1685	1985	1995	2075	2185	2285	2375	2445	2465	Weight (lbs.)
Portable Generator Storage Compartment w/Tie-Downs and Security Toy Lock			•	•	•	•	•	•	•	•	•	
Power Cord/Water Hose Storage Compartment			•	•	•	•	•	•	•	•	•	

CONSTRUCTION/INSULATION

One-Piece Roof (PVC)	•	•	•	•	•	•	•	•	•	•	•	
Exterior Tapered Ducted Air Roof Design (1475 & 1575 Remain Non-Ducted)	•	•	•	•	•	•	•	•	•	•	•	
CNC Cut & Laminated Floor/ Ceiling W/ Aluminum Frame & Block Foam Insulation	•	•	•	•	•	•	•	•	•	•	•	
Azdel Interior Panel Walls	•	•	•	•	•	•	•	•	•	•	•	
4 Seasons Comfort Technology Package	•	•	•	•	•	•	•	•	•	•	•	
-Enclosed Underbelly Design W/Insulated and Heated Holding Tanks	•	•	•	•	•	•	•	•	•	•	•	
-Insulated Hatch Covers	•	•	•	•	•	•	•	•	•	•	•	
-Water Heater Bypass and Winterizing Valve (*WH Bypass Valve)	*	*	•	•	•	*	•	•	•	•	•	

INTERIOR/DECOR

Interior - Grayson	0	0	0	0	0	0	0	0	0	0	0	
Interior - Bronzite	0	0	0	0	0	0	0	0	0	0	0	
Interior - Lapis	0	0	0	0	0	0	0	0	0	0	0	
Sofa Bed w/Kick Out Foot Rests							•					
Sofa Bed (Slide-Out)	0											185
J-Lounge								0			•	98
Swivel Rockers (1 Swivel Rocker / 1 Swivel Only - 1475 Model)	•/2							0/2	•/2			20
Solid Surface Galley Area Countertop and Extensions *Where Applicable	•	•	•	•*	•	•	•*	•	•	•	•	
Hardwood Flat Panel Cabinet Doors	•	•	•	•	•	•	•	•	•	•	•	
Radius "Euro" Overhead Cabinet Doors W/Decorative Pulls & LED Lighting	•	•	•	•	•	•	•	•	•	•	•	
Euro-Ply Cabinet Construction	•	•	•	•	•	•	•	•	•	•	•	
Hidden Trash Can Compartment								•	•	•	•	
Wall Clock & Key Hanger	•	•	•	•	•	•	•	•	•	•	•	

GALLEY/APPLIANCES & EQUIPMENT

"Flush Mount" Stainless Steel 3-Burner Range W/ 21" Oven (17" 1575 Model)	•	•	•	•	•		•	•	•	•	•	
"Flush Mount" 2-Burner Stainless Steel Euro Cooktop w/Glass Cover						•						
Stainless Steel Microwave Oven	•	•	•	•	•	•	•	•	•	•	•	
Refrigerator 2-Way Double Door (Norcold 6 Cu. Ft.)			•	•	•		•	•	•	•	•	
Refrigerator 3-Way Double Door (Norcold 5 Cu. Ft.)	•	•				•						
Galley Single Stainless Steel Sink (Round) W/Residential Single Lever Pullout Sprayer						•						
Single "Undermount" Sink (Round) W/Residential Single Lever Pullout Sprayer	•	•										
Residential "Undermount" Large Farm Single Sink W/Residential Single Lever Pullout Sprayer			•	•	•		•	•	•	•	•	
Sink Cover(s)	•	•	•	•	•		•	•	•	•	•	

FRESH AND WASTE WATER SYSTEMS

Water Pump W/In-Line Filter Residential Demand System	•	•	•	•	•	•	•	•	•	•	•	
Water Heater Gas/Electric/ Auto Lite -DSI			•	•	•		•	•	•	•	•	

	1475	1575	1685	1985	1995	2075	2185	2285	2375	2445	2465	Weight (lbs.)
Water Heater Gas/Electric W/Boost Mode Feature (Truma Combi Eco Plus)	•	•				•						
Tankless Water Heater (Truma Aqua-Go)			0	0	0		0	0	0	0	0	TBD

BATHROOM

Marine Toilet - Foot Pedal - Porcelain W/ Exterior Black Tank Flush			•	•	•	•	•	•	•	•	•	
Marine Toilet - Foot Pedal - Plastic W/ Exterior Black Tank Flush		•										
Marine Toilet - Hand - Plastic W/ Exterior Black Tank Flush	•											
Residential "Undermount" Oval Lavy Sink W/Hi-rise Single Lever Faucet	•		•	•	•		•	•	•		•	
Residential "Vessel" Lavy Sink W/ Hi-Rise Single Lever Faucet						•				•		
Tub		•										
Shower Pan	•		•	•	•	•	•	•	•	•	•	
Adjustable Slide Bar Shower Head Assembly		•		•		•	•	•	•	•	•	
Showermiser	•	•	•	•	•	•	•	•	•	•	•	
Medicine Cabinet W/Mirror Door	•	•	•	•	•	•	•	•	•	•	•	
Folding Lavy Extension							•	•				
Towel Rod on Wall	•	•	•	•	•	•	•	•	•	•	•	
Towel Ring			•		•	•	•	•	•	•	•	
Residential Radius "Glass" Shower Door Enclosure										•		
Residential Radius "Soft" Shower Door Enclosure				•		•	•	•		•	•	
Soft Radius Panel Shower Enclosure	•		•		•							
Shower Curtain w/Tieback		•										
Skylight - Dual Pane	•	•	•	•	•	•	•	•	•	•	•	
Ducted Heat	•	•	•	•	•	•	•	•	•	•	•	

BEDROOM

Deluxe Queen Pillow Top Innerspring Mattress W/Bedspring & 2 LED Reading Lights	•	•	•	•	•	•	•	•	•	•	•	
Deluxe King Pillow Top Innerspring Mattress W/Bedspring & 2 LED Reading Lights												•
Bedspring W/Foot Throw	•	•	•	•	•	•	•	•	•	•	•	
Convertible Sofa/Queen Bed			0	0		0						72
Fold-Up Bunk Beds (250 lbs. Weight Limit)						•/3				•/2		
Privacy Curtain			•	•	•	•	•	•	•	•	•	
Privacy Divider Door(s)							•		•	•	•	

DINETTE

Dinette w/Locking Pull-Out Storage Drawers		•	•	•	•		•	•	•	•	•	
U-Shaped Dinette w/Euro Telescoping/360 Degree Adjusting Table Top						•						

ELECTRICAL

Systems Monitor Panel W/Battery Indicator	•	•	•	•	•	•	•	•	•	•	•	
12V/USB Charging Port(s)	•	•	•	•	•	•	•	•	•	•	•	
Lithium Battery (Up to 2)	0	0	0	0	0	0	0	0	0	0	0	34 ea.
Upgraded Battery Monitor	0	0	0	0	0	0	0	0	0	0	0	TBD
1500W Inverter	0	0	0	0	0	0	0	0	0	0	0	TBD
LED Interior & Exterior Lighting	•	•	•	•	•	•	•	•	•	•	•	
Storage Compartment Lighting	•	•	•	•	•	•	•	•	•	•	•	
Dual Battery Compartment W/Disconnect			•	•	•	•	•	•	•	•	•	
Single Battery Mount (Located on Chassis "A" Frame)	•	•										
AC - Coleman 15K W/Wall Control	•	•										

Due to supply-chain issues, certain features shown may have limited or late availability, been substituted or are no longer available. Please see your dealer and the actual unit regarding the features on an individual travel trailer.

	1475	1575	1685	1985	1995	2075	2185	2285	2375	2445	2465	Weight (lbs.)
A/C Ducted - Coleman 15K W/Wall Control			•	•	•	•	•	•	•	•	•	
Wall Thermostat	•	•	•	•	•	•	•	•	•	•	•	
Fantastic Roof Vent W/Remote in Bedroom Area	•	•	•	•	•	•	•	•	•	•	•	
Power Roof Vent in Bath	•	•	•	•	•	•	•	•	•	•	•	
Pre-Wired for Park/Sat Cable/2nd Fantastic Vent	•	•	•	•	•	•	•	•	•	•	•	
JBL AM/FM Stereo W/Powered Bass Sub Woofer	•	•	•	•	•	•	•	•	•	•	•	
JBL Interior/Exterior Bluetooth Speaker W/Wall Mount Bracket	•	•	•	•	•	•	•	•	•	•	•	
TV 24" (110V W/Inverter) Smart LCD W/ TV Antenna HD	•	•	•		•	•						
TV 32" (110V W/Inverter) Smart LCD W/ TV Antenna HD				•			•	•	•	•	•	
TV 40" (110V W/Inverter) Smart LCD W/ TV Antenna HD												•
TV 24" (110V W/Inverter) Smart LCD - Bedroom						0		0	0	0		14
TV 40" (110V W/Inverter) Smart LCD - Bedroom											0	40
LTE/Cell Signal Booster	0	0	0	0	0	0	0	0	0	0	0	
Electric Fireplace												•
LED Patio & Hitch Lights - Switched	•	•	•	•	•	•	•	•	•	•	•	
Exterior Receptacle (SAE) Solar Panel Port Side	•	•	•	•	•	•	•	•	•	•	•	
Solar Panel Pre-Wire	•	•	•	•	•	•	•	•	•	•	•	
Solar Panel/ 190w (Up to 2)	0	0	0	0	0	0	0	0	0	0	0	25 ea.
Exterior 12V/120V Patio Outlet and Entertainment Coax Cable Receptacle	•	•	•	•	•	•	•	•	•	•	•	

Option Weights - All weights are estimates and may vary. • = Standard Option 0 = Optional Feature

AVAILABLE AMENITIES



Tri-Five Propane Tanks allow for extended stays while standard aerodynamic cover looks stylish and keeps tanks protected and out of site. - N/A 1475 & 1575



Portable Generator Storage Compartment with Tie Down Straps accommodates Honda EU2200i and similar sized portable generators. (Interior Dimensions 19 3/8" (D) x 26 5/8" (W) x 19" (H) - N/A 1475, 1575 & 2465



Optional Exterior Kitchen (2075 & 2445) allows you to take your meal preparation outside!



Bunk House Models Available (2185 & 2445) ensures no one gets left behind!

	1475	1575	1685	1985	1995	2075	2185	2285	2375	2445	2465	Weight (lbs.)
Water Heater Gas/Electric W/Boost Mode Feature (Truma Combi Eco Plus)	•	•				•						
Tankless Water Heater (Truma Aqua-Go)			0	0	0		0	0	0	0	0	TBD

BATHROOM

Marine Toilet - Foot Pedal - Porcelain W/ Exterior Black Tank Flush			•	•	•	•	•	•	•	•	•	
Marine Toilet - Foot Pedal - Plastic W/ Exterior Black Tank Flush		•										
Marine Toilet - Hand - Plastic W/ Exterior Black Tank Flush	•											
Residential "Undermount" Oval Lavy Sink W/Hi-rise Single Lever Faucet	•		•	•	•		•	•	•		•	
Residential "Vessel" Lavy Sink W/ Hi-Rise Single Lever Faucet						•				•		
Tub		•										
Shower Pan	•		•	•	•	•	•	•	•	•	•	
Adjustable Slide Bar Shower Head Assembly		•		•		•	•	•		•	•	
Showermiser	•	•	•	•	•	•	•	•	•	•	•	
Medicine Cabinet W/Mirror Door	•	•	•	•	•	•	•	•	•	•	•	
Folding Lavy Extension							•	•				
Towel Rod on Wall	•	•	•	•	•	•	•	•	•	•	•	
Towel Ring			•		•	•	•	•	•	•	•	
Residential Radius "Glass" Shower Door Enclosure									•			
Residential Radius "Soft" Shower Door Enclosure				•		•	•	•		•	•	
Soft Radius Panel Shower Enclosure	•		•		•							
Shower Curtain w/Tieback		•										
Skylight - Dual Pane	•	•	•	•	•	•	•	•	•	•	•	
Ducted Heat	•		•	•	•	•	•	•	•	•	•	

BEDROOM

Deluxe Queen Pillow Top Innerspring Mattress W/Bedsread & 2 LED Reading Lights	•	•	•	•	•	•	•	•	•	•		
Deluxe King Pillow Top Innerspring Mattress W/Bedsread & 2 LED Reading Lights											•	
Bedsread W/Foot Throw	•	•	•	•	•	•	•	•	•	•	•	
Convertible Sofa/Queen Bed			0	0		0						72
Fold-Up Bunk Beds (250 lbs. Weight Limit)						•/3			•/2			
Privacy Curtain			•	•	•	•	•	•	•	•	•	
Privacy Divider Door(s)						•		•	•	•	•	

DINETTE

Dinette w/Locking Pull-Out Storage Drawers		•	•	•	•		•	•	•	•	•	
U-Shaped Dinette w/Euro Telescoping/360 Degree Adjusting Table Top						•						

ELECTRICAL

Systems Monitor Panel W/Battery Indicator	•	•	•	•	•	•	•	•	•	•	•	
12V/USB Charging Port(s)	•	•	•	•	•	•	•	•	•	•	•	
Lithium Battery (Up to 2)	0	0	0	0	0	0	0	0	0	0	0	34 ea.
Upgraded Battery Monitor	0	0	0	0	0	0	0	0	0	0	0	TBD
1500W Inverter	0	0	0	0	0	0	0	0	0	0	0	TBD
LED Interior & Exterior Lighting	•	•	•	•	•	•	•	•	•	•	•	
Storage Compartment Lighting	•	•	•	•	•	•	•	•	•	•	•	
Dual Battery Compartment W/Disconnect			•	•	•	•	•	•	•	•	•	
Single Battery Mount (Located on Chassis "A" Frame)	•	•										
AC – Coleman 15K W/Wall Control	•	•										

Due to supply-chain issues, certain features shown may have limited or late availability, been substituted or are no longer available. Please see your dealer and the actual unit regarding the features on an individual travel trailer.

	1475	1575	1685	1985	1995	2075	2185	2285	2375	2445	2465	Weight (lbs.)
A/C Ducted – Coleman 15K W/Wall Control			•	•	•	•	•	•	•	•	•	
Wall Thermostat	•	•	•	•	•	•	•	•	•	•	•	
Fantastic Roof Vent W/Remote in Bedroom Area	•	•	•	•	•	•	•	•	•	•	•	
Power Roof Vent in Bath	•	•	•	•	•	•	•	•	•	•	•	
Pre-Wired for Park/Sat Cable/2nd Fantastic Vent	•	•	•	•	•	•	•	•	•	•	•	
JBL AM/FM Stereo W/Powered Bass Sub Woofer	•	•	•	•	•	•	•	•	•	•	•	
JBL Interior/Exterior Bluetooth Speaker W/Wall Mount Bracket	•	•	•	•	•	•	•	•	•	•	•	
TV 24" (110V W/Inverter) Smart LCD W/ TV Antenna HD	•	•	•		•	•						
TV 32" (110V W/Inverter) Smart LCD W/ TV Antenna HD				•			•	•	•	•	•	
TV 40" (110V W/Inverter) Smart LCD W/ TV Antenna HD												•
TV 24" (110V W/Inverter) Smart LCD - Bedroom						0		0	0	0		14
TV 40" (110V W/Inverter) Smart LCD - Bedroom											0	40
LTE/Cell Signal Booster	0	0	0	0	0	0	0	0	0	0	0	
Electric Fireplace											•	•
LED Patio & Hitch Lights - Switched	•	•	•	•	•	•	•	•	•	•	•	
Exterior Receptacle (SAE) Solar Panel Port Side	•	•	•	•	•	•	•	•	•	•	•	
Solar Panel Pre-Wire	•	•	•	•	•	•	•	•	•	•	•	
Solar Panel/ 190w (Up to 2)	0	0	0	0	0	0	0	0	0	0	0	25 ea.
Exterior 12V/120V Patio Outlet and Entertainment Coax Cable Receptacle	•	•	•	•	•	•	•	•	•	•	•	

Option Weights – All weights are estimates and may vary. • = Standard Option 0 = Optional Feature

AVAILABLE AMENITIES



Tri-Five Propane Tanks allow for extended stays while standard aerodynamic cover looks stylish and keeps tanks protected and out of site. – N/A 1475 & 1575



Portable Generator Storage Compartment with Tie Down Straps accommodates Honda EU2200i and similar sized portable generators. (Interior Dimensions 19 3/8" (D) x 26 5/8" (W) x 19" (H) – N/A 1475, 1575 & 2465



Optional Exterior Kitchen (2075 & 2445) allows you to take your meal preparation outside!



Bunk House Models Available (2185 & 2445) ensures no one gets left behind!

SELECT STANDARD FEATURES



Leaf Spring & Road Armor Suspension - Proven design combined with anti-shock technology, results in less road shock and vibrations transferred from the road to your trailer and ultimately a smoother ride. (N/A 1475 & 1575)



Radius & Ducted Roof - Radius roof design ensures proper rain run off while ducted system distributes air more evenly and efficiently throughout the RV. (Ducted Roof N/A on 1475 & 1575)



JBL Bluetooth Speaker - Wirelessly stream your favorite both inside your RV or around the campfire or on the picnic table!



Smart 110V LED TV W/Inverter - Enjoy the benefits of today's latest technology whether using shore power or while camping off the grid!



Electric Stabilizer Jacks W/Footpad - Make setup & teardown sweat free, keeping your trailer stabilized while parked. - N/A 1475 & 1575



Front Nose Cap - Great looking design made with durable material to fend off nature's worst! Who says you can't have both form and function!



Entry Door - European influenced radius design with integrated shade and screen provide privacy and bug protection.



Coleman 15M A/C - Quieter running system with heat strip, provides efficient cooling and auxiliary heating source and use of a wider range of generators to power your A/C when not on shore power.



Solid Surface Counter Tops - Residential styled galley counter tops look beautiful while resisting the negative effects of moisture.



Four Seasons Comfort Technology Package - Key features including ducted holding tank heat, insulated hatch covers & fully enclosed underbelly, keep you warmer in the winter and cooler in the summer!



"Lance Life" 4' Exterior Table - We all need one & this one doesn't waste space. N/A 1475, 1575, 2465



2" Receiver (300lb. Limit) - Convenient rear mounted receiver to mount bike racks and carry other appropriate gear. (N/A 1475 & 1575)



Latitude Powered Awning - Provides unobstructed shade with direct response wind sensor & LED light bar.



MORryde Slide Out Storage Tray - Rolling smoothly on ball-bearing slides, this heavy duty tray makes storage access in your front storage compartment easy! (N/A 2465)



Solar On The Side - SAE port accepts external aftermarket solar panels to keep your 12v system charged.

SELECT OPTIONAL FEATURES



Shock Absorbers - Take your suspension to the next level by protecting your trailer against less than perfect roads and providing an even smoother ride. (N/A 1475 & 1575)



LTE/Cell Signal Booster - Boost your cell signal and reach more cell towers, while multiple users enjoy greater coverage and faster on-line speeds with no extra monthly fees.



Truma AquaGo On Demand Water Heater - Provides efficient flow of continuous hot water for all your bathing or dish cleaning needs. (N/A 1475, 1575, & 2075)



"Lance Load" Roof Rack - Exclusive roof rack system safely stores your canoe, kayak, paddle boards, etc. - N/A 1475 & 1575 (Weight Limit 500lbs. Distributed)



Roof Mounted Solar Panel(s) - Optional 190W panels (up to 2) keeps you and your accessories charged.



UltraSTEPglow Entry Steps - Provides sturdy, adjustable, glow-in-the-dark steps for safe and secure entrance and exit.



Rear Camera - With color display and sound makes backing up a safer, one-person job.



Battery Monitor - View your battery's performance with easy to understand battery stats at the push of a button & customizable low voltage alarms.



1500 Watt Power Inverter - Converts battery power to 110V power allowing use of select appliances and devices including laptops, CPAP machines and others, while your away from shore power.



Lithium Batteries - The latest battery technology offers more usable capacity vs. traditional batteries in a lighter, safer package (up to 2).

SELECT STANDARD FEATURES



Leaf Spring & Road Armor Suspension – Proven design combined with anti-shock technology, results in less road shock and vibrations transferred from the road to your trailer and ultimately a smoother ride. (N/A 1475 & 1575)



Radius & Ducted Roof – Radius roof design ensures proper rain run off while ducted system distributes air more evenly and efficiently throughout the RV. (Ducted Roof N/A on 1475 & 1575)



JBL Bluetooth Speaker – Wirelessly stream your favorite both inside your RV or around the campfire or on the picnic table!



Smart 110V LED TV W/Inverter – Enjoy the benefits of today's latest technology whether using shore power or while camping off the grid!



Electric Stabilizer Jacks W/Footpad – Make setup & teardown sweat free, keeping your trailer stabilized while parked. – N/A 1475 & 1575



Front Nose Cap – Great looking design made with durable material to fend off nature's worst! Who says you can't have both form and function!



Entry Door – European influenced radius design with integrated shade and screen provide privacy and bug protection.



Coleman 15M A/C – Quieter running system with heat strip, provides efficient cooling and auxiliary heating source and use of a wider range of generators to power your A/C when not on shore power.



Solid Surface Counter Tops – Residential styled galley counter tops look beautiful while resisting the negative effects of moisture.



Four Seasons Comfort Technology Package – Key features including ducted holding tank heat, insulated hatch covers & fully enclosed underbelly, keep you warmer in the winter and cooler in the summer!



"Lance Life" 4' Exterior Table – We all need one & this one doesn't waste space. N/A 1475, 1575, 2465



2" Receiver (300lb. Limit) – Convenient rear mounted receiver to mount bike racks and carry other appropriate gear. (N/A 1475 & 1575)



Latitude Powered Awning – Provides unobstructed shade with direct response wind sensor & LED light bar.



MORryde Slide Out Storage Tray – Rolling smoothly on ball-bearing slides, this heavy duty tray makes storage access in your front storage compartment easy! (N/A 2465)



Solar On The Side – SAE port accepts external aftermarket solar panels to keep your 12v system charged.

SELECT OPTIONAL FEATURES



Shock Absorbers – Take your suspension to the next level by protecting your trailer against less than perfect roads and providing an even smoother ride. (N/A 1475 & 1575)



LTE/Cell Signal Booster – Boost your cell signal and reach more cell towers, while multiple users enjoy greater coverage and faster on-line speeds with no extra monthly fees.



Truma AquaGo On Demand Water Heater – Provides efficient flow of continuous hot water for all your bathing or dish cleaning needs. (N/A 1475, 1575, & 2075)



"Lance Load" Roof Rack – Exclusive roof rack system safely stores your canoe, kayak, paddle boards...etc. – N/A 1475 & 1575 (Weight Limit 500lbs. Distributed)



Roof Mounted Solar Panel(s) – Optional 190W panels (up to 2) keeps you and your accessories charged.



UltraSTEPglow Entry Steps – Provides sturdy, adjustable, glow-in-the-dark steps for safe and secure entrance and exit.



Rear Camera – With color display and sound makes backing up a safer, one-person job.



Battery Monitor – View your battery's performance with easy to understand battery stats at the push of a button & customizable low voltage alarms.



1500 Watt Power Inverter – Converts battery power to 110V power allowing use of select appliances and devices including laptops, CPAP machines and others, while your away from shore power.



Lithium Batteries – The latest battery technology offers more usable capacity vs. traditional batteries in a lighter, safer package (up to 2).

CALCULATING TOWED WEIGHT AND CARRYING CAPACITY

These are general guidelines to use when matching a trailer to your tow vehicle, assuming standard equipment on your trailer. Whether any travel trailer can be used with your vehicle and its capacities for carrying and/or towing is affected by how much optional equipment is added to the trailer, and the weight of passengers and all other items you carry in your tow vehicle and trailer.

To get an approximate weight of the model of your choice equipped with the optional features you are considering, the "Build Yours" feature at lancecamper.com is a great resource. Because we're unfamiliar with your tow vehicle, Lance makes no warranties or representation - expressed or implied - as to performance or reliability of your tow vehicle with a Lance trailer. For professional guidance, always consult with your Factory Authorized Lance Dealer. They're trained in calculating proper matches between tow vehicles and trailers.

3,500 POUND TOW RATING



Models: 1475, 1575

7,000 POUND TOW RATING



Models: 1475, 1575, 1685, 1985, 1995, 2075

5,000 POUND TOW RATING

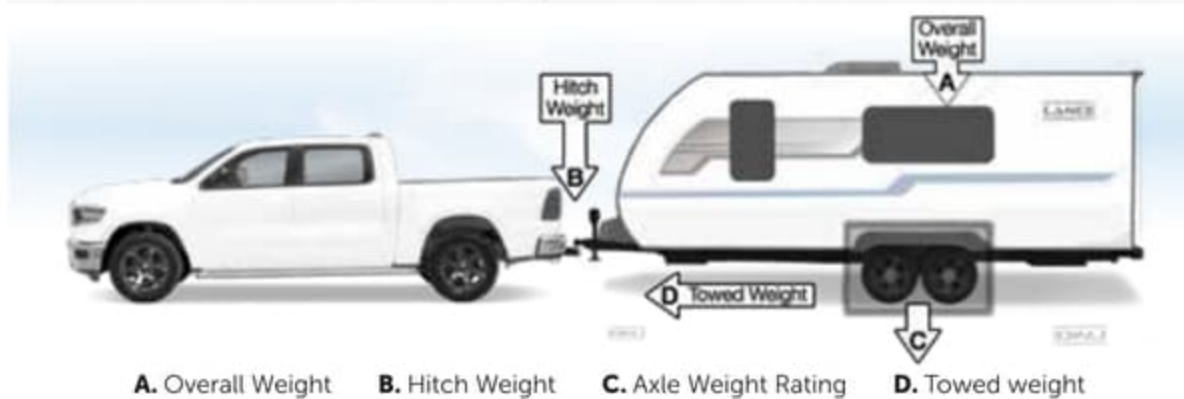


Models: 1475, 1575

8,000 POUND TOW RATING



Models: 1475, 1575, 1685, 1985, 1995, 2075, 2185, 2285, 2375, 2445, 2465



Hitch weight is actually being **hauling** while the remaining trailer weight is being **towed**.

$$A - B = D$$

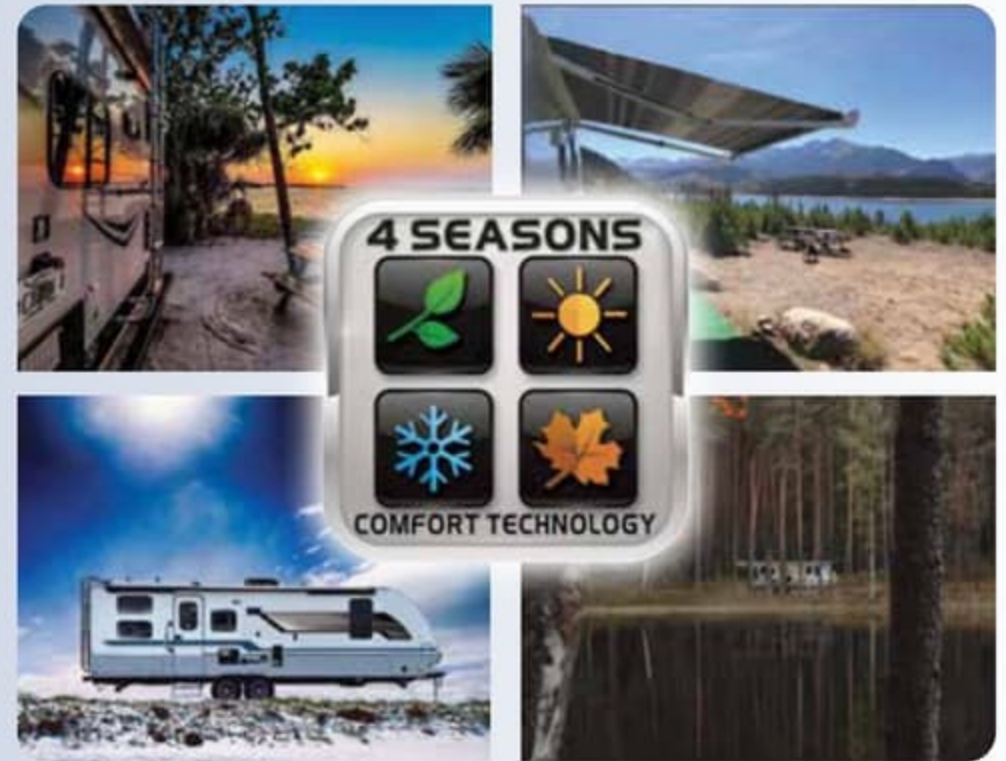
Ex: If a trailer has an overall weight of 4k lbs. with 400 lbs. of hitch weight that would mean 3600 lbs. is on the axles and being towed. (4,000 - 400 = 3,600 or **D. Towed Weight**)

Cargo capacity must also consider hitch weight as well as axle weight rating.

$$C - D = \text{Cargo Capacity}$$

Ex: If the axle weight rating is 5200 (2600 each x 2) for this unit you will have 1600 lbs. of axle capacity for cargo. (5,200 - 3,600 = 1,600 or **Cargo Capacity**)

4 SEASONS COMFORT TECHNOLOGY



KEY FEATURES



Ducted heat is routed into individually insulated holding tanks to keep them, the valves and PEX lines warm.



Water heater bypass & winterizing valves make draining the system for winter storage a breeze.



Insulated hatch covers add an additional layer of insulation to vents and sky lights.



Enclosed Underbelly - your heated holding tanks and junction valves are protected from the elements, allowing operation over broader temperature ranges.

CALCULATING TOWED WEIGHT AND CARRYING CAPACITY

These are general guidelines to use when matching a trailer to your tow vehicle, assuming standard equipment on your trailer. Whether any travel trailer can be used with your vehicle and its capacities for carrying and/or towing is affected by how much optional equipment is added to the trailer, and the weight of passengers and all other items you carry in your tow vehicle and trailer.

To get an approximate weight of the model of your choice equipped with the optional features you are considering, the "Build Yours" feature at lancecamper.com is a great resource. Because we're unfamiliar with your tow vehicle, Lance makes no warranties or representation – expressed or implied – as to performance or reliability of your tow vehicle with a Lance trailer. For professional guidance, always consult with your Factory Authorized Lance Dealer. They're trained in calculating proper matches between tow vehicles and trailers.

3,500 POUND TOW RATING



Models: 1475, 1575

7,000 POUND TOW RATING



Models: 1475, 1575, 1685, 1985, 1995, 2075

5,000 POUND TOW RATING

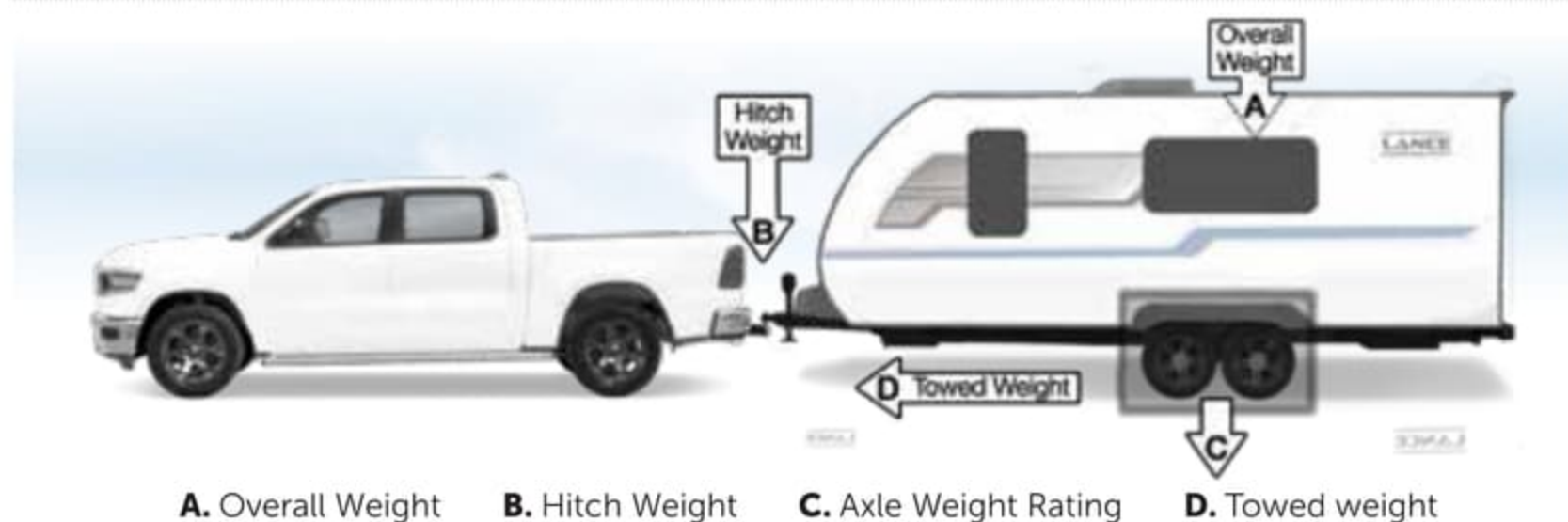


Models: 1475, 1575

8,000 POUND TOW RATING



Models: 1475, 1575, 1685, 1985, 1995, 2075, 2185, 2285, 2375, 2445, 2465



Hitch weight is actually being **hauling** while the remaining trailer weight is being **towed**.

$$A - B = D$$

Ex: If a trailer has an overall weight of 4k lbs. with 400 lbs. of hitch weight that would mean 3600 lbs. is on the axles and being towed. (4,000 – 400 = 3,600 or **D. Towed Weight**)

Cargo capacity must also consider hitch weight as well as axle weight rating.

$$C - D = \text{Cargo Capacity}$$

Ex. If the axle weight rating is 5200 (2600 each x 2) for this unit you will have 1600 lbs. of axle capacity for cargo. (5,200 – 3,600 = 1,600 or **Cargo Capacity**)

4 SEASONS COMFORT TECHNOLOGY



KEY FEATURES



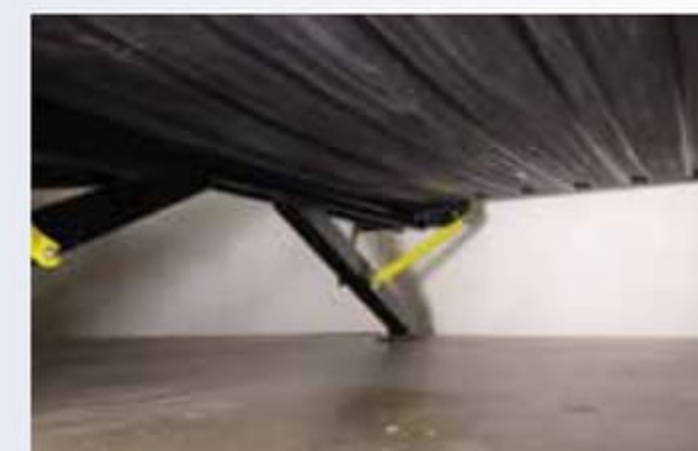
Ducted heat is routed into individually insulated holding tanks to keep them, the valves and PEX lines warm.



Water heater bypass & winterizing valves make draining the system for winter storage a breeze.



Insulated hatch covers add an additional layer of insulation to vents and sky lights.



Enclosed Underbelly – your heated holding tanks and junction valves are protected from the elements, allowing operation over broader temperature ranges.

DESIGN & CONSTRUCTION

- A.** The roof is covered in energy-star rated Polyvinyl Chloride (PVC) material. Integrated rain gutters and drip spouts prevent the sides of your trailer from streaking.
- B.** Rigid block foam insulation yields maximum "R" value and promotes structural strength.
- C.** Interior walls and cabinetry are constructed of Euro-Ply. This superior product is lighter, formaldehyde free and stronger. Providing both beauty and durability.
- D.** Keeping it all together are stainless steel fasteners. Unlike our competitors, this expensive hardware resists corrosion making for a lasting investment.
- E.** Fiberglass upper nose cap with TPO lower gravel guard with LED lighting, combine for beautiful and resilient protection from the abuses of the road.
- F.** Lance uses more expensive Azdel™ in place of Luan wood, virtually eliminating mold and mildew. It's also lighter, carcinogen and formaldehyde free and has better "R" value for superior insulation.
- G.** Lance's aluminum framed superstructure provides for an extremely solid trailer that is also lightweight.
- H.** Heavy duty leaf spring suspension with "Road Armor" equalizer system and optional shock absorber package, absorbs bumps and vibrations resulting in a more comfortable ride with less stress on your trailer. (N/A 1475 & 1575)
- I.** Engineered "I" beam tempered steel chassis provides a reliable and proven platform for years of trouble free operation. (N/A 1475 & 1575)
- J.** Slideout rooms feature smooth, dependable operation. Lighter in weight than other mechanisms, they're also smaller, allowing for more living space.
- K.** The slick, gloss fiberglass exterior walls are laminated under intense pressure with heat-setting adhesives for years of trouble-free service.



2 YEAR
STRUCTURAL LIMITED
WARRANTY

20 YEAR
ROOF LIMITED
WARRANTY

Please see lancecamper.com/warranty for details.

2022 LANCE® TRAVEL TRAILER BROCHURE ©2022 Lance Camper Mfg. Corp. (LCMC). All rights reserved. Lance, the Lance logomark, the Lance logomark with chevron, The Lance Look, Lance Custom Design, LanceLock, ultraDECKplus, ultraSTEPplus, ultraSTEPglow, Discover The Lance Difference, Skyview, Lance Load, Lance Life, LIVE, LANCE, LIFE, REV Group® and other exclusive Lance product names, marks, or designations are trademarks, service marks, or registered trademarks of LCMC. All other marks are property of their respective owners. All product data, graphics, and photography, illustrations, and/or renderings in this book were as accurate as possible at press time. Subsequent refinements during the model year may be evident in the actual product. LCMC reserves the right to change prices, colors, materials, equipment, and specifications without notice — as well as to add, modify or discontinue models shown in promotional materials and/or on its websites. All weights, fuel, and liquid capacities are approximate and dimensions are nominal. It is the owner's sole responsibility to select the proper Lance model, tow vehicle, and tow equipment for safe operation. Your Factory Authorized Lance Dealer can advise you of the operating parameters for your particular configuration and can confirm prices and product specifications material before making your purchase decision. See the website for full warranty information. GVWR (Gross Vehicle Weight Rating) is the maximum permissible weight of a fully-loaded RV. Axle Rating is the maximum permissible loaded weight a specific axle is designed to carry. Overall length is measured from the tip of the hitch to the rear bumper (excludes accessories). Excludes safety equipment and awnings. The actual propane capacity is 80% of water listing as required by the safety code. Brochure printed in the USA on FSM paper. 30K, 2/7 Rev. 2.0.

The information provided in this brochure applies to all 2022 model year products.

DESIGN & CONSTRUCTION

- A.** The roof is covered in energy-star rated Polyvinyl Chloride (PVC) material. Integrated rain gutters and drip spouts prevent the sides of your trailer from streaking.
- B.** Rigid block foam insulation yields maximum "R" value and promotes structural strength.
- C.** Interior walls and cabinetry are constructed of Euro-Ply. This superior product is lighter, formaldehyde free and stronger. Providing both beauty and durability.
- D.** Keeping it all together are stainless steel fasteners. Unlike our competitors, this expensive hardware resists corrosion making for a lasting investment.
- E.** Fiberglass upper nose cap with TPO lower gravel guard with LED lighting, combine for beautiful and resilient protection from the abuses of the road.
- F.** Lance uses more expensive Azdel™ in place of Luan wood, virtually eliminating mold and mildew. It's also lighter, carcinogen and formaldehyde free and has better "R" value for superior insulation.
- G.** Lance's aluminum framed superstructure provides for an extremely solid trailer that is also lightweight.
- H.** Heavy duty leaf spring suspension with "Road Armor" equalizer system and optional shock absorber package, absorbs bumps and vibrations resulting in a more comfortable ride with less stress on your trailer. (N/A 1475 & 1575)
- I.** Engineered "I" beam tempered steel chassis provides a reliable and proven platform for years of trouble free operation. (N/A 1475 & 1575)
- J.** Slideout rooms feature smooth, dependable operation. Lighter in weight than other mechanisms, they're also smaller, allowing for more living space.
- K.** The slick, gloss fiberglass exterior walls are laminated under intense pressure with heat-setting adhesives for years of trouble-free service.



2YEAR
STRUCTURAL LIMITED
WARRANTY

20YEAR
ROOF LIMITED
WARRANTY

Please see lancecamper.com/warranty for details.

2022 LANCE® TRAVEL TRAILER BROCHURE ©2022 Lance Camper Mfg. Corp. (LCMC). All rights reserved. Lance, the Lance logomark, the Lance logomark with chevron, The Lance Look, Lance Custom Design, LanceLock, ultraDECKplus, ultraSTEPplus, ultraSTEPglow, Discover The Lance Difference, Skyview, Lance Load, Lance Life, LIVE. LANCE. LIFE., REV Group® and other exclusive Lance product names, marks, or designations are trademarks, service marks, or registered trademarks of LCMC. All other marks are property of their respective owners. All product data, graphics, and photography, illustrations, and/or renderings in this book were as accurate as possible at press time. Subsequent refinements during the model year may be evident in the actual product. LCMC reserves the right to change prices, colors, materials, equipment, and specifications without notice — as well as to add, modify or discontinue models shown in promotional materials and/or on its websites. All weights, fuel, and liquid capacities are approximate and dimensions are nominal. It is the owner's sole responsibility to select the proper Lance model, tow vehicle, and tow equipment for safe operation. Your Factory Authorized Lance Dealer can advise you of the operating parameters for your particular configuration and can confirm prices and product specifications material before making your purchase decision. See the website for full warranty information. GVWR (Gross Vehicle Weight Rating) is the maximum permissible weight of a fully-loaded RV. Axle Rating is the maximum permissible loaded weight a specific axle is designed to carry. Overall length is measured from the tip of the hitch to the rear bumper (excludes accessories). Excludes safety equipment and awnings. The actual propane capacity is 80% of water listing as required by the safety code. Brochure printed in the USA on FSM paper. 30K, 2/7 Rev. 2.0.

The information provided in this brochure applies to all 2022 model year products.