

2023  
THE FORETRAVEL  
REALM FS605  
*The REALM of dreams is here...*



FORETRAVEL  
MOTORCOACH

**REALM: A Royal Kingdom;**  
*a domain within which anything may occur, prevail or dominate.*



*The REALM's cutting edge design sets it apart from every other luxury motor coach on the market today. Rivalled only by the high-end automotive world, the REALM FS605 exudes luxury and refinement.*



*Meticulously designed front grill, headlight accents and intricate fiberglass cap design*



*REALM-AIR dual overhead fairings that reduce wind drag for superior aerodynamics*



*Courtesy Puddle Logo Light on Bottom of Entry Door*



*LED under-coach lighting package*



*Opulent interior décor, handcrafted wood packages and natural quartz countertops*

***The Foretravel REALM FS605 perfectly combines power, prestige & performance!***



# FORE-SLIDE



The REALM's slide-out rooms feature pneumatic seals that provide a literal airtight seal completely around the entire slide-out room regardless of slide position. They also feature a power drop down flooring system that gives the REALM not only a flat-floor when extended, but a true flat-floor when retracted as well. Don't look for an interior carpet lip, exterior silicone beads, pop-rivets, screws, plastic moldings, or unattractive and intrusive slide-out room mechanisms to waste your valuable storage space. On a REALM, all you will find is the absolute finest in fit, finish and function offered in a slide-out room today.

## *REALM FS605 safety far exceeds the industry norm*

*Just a few highlights include:*

- Spartan Advanced Protection System®
- Automatic traction control
- Collision mitigation system with Adaptive Cruise Control
- Electronic stability control
- All-wheel disc brakes
- A tire pressure sensor system
- "Premier Steer" steering assist system
- Race-inspired Bilstein® shocks validated to the REALM's specifications



Steel construction instead of aluminum



TYRON's® Bead-Lock Wheel Safety Bands



Rear Exit Door



Mobile-eye® Collision Avoidance System



Fogmaker Fire Suppression System for the engine



Just a few of the available features on the ALL NEW REALM FS605

# Premiere *Steer*



Column Drive System - Arrive Relaxed & Refreshed

**"Bird's Eye View"** coach monitoring system for the absolute ultimate in coach visibility!

- Eliminates "Danger Zones" from all sides
- High resolution camera images displayed
- Easy-to-follow guidelines while backing up
- Multiple single camera views around vehicle
- Triggered single camera views around vehicle
- Toggled views for any single camera



Remote control rear camera for optimal visibility in every scenario!



Parking



Driving

## Xtreme-Schemes by Foretravel



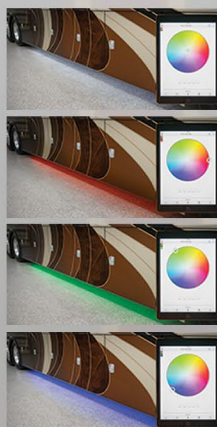
Custom Marbling

Far above the "4 color" industry norm, a **REALM FS605** is a true rolling artistic masterpiece.

## CONNECTING MOBILE LIFESTYLES™



Take **CONTROL** of your **REALM**!



Coach Command controls a multitude of functions including changing the undercarriage lights with precise control!

## Flat Floor Rear Bath!

This is no small feat when compared to the competition.



REALM vs.



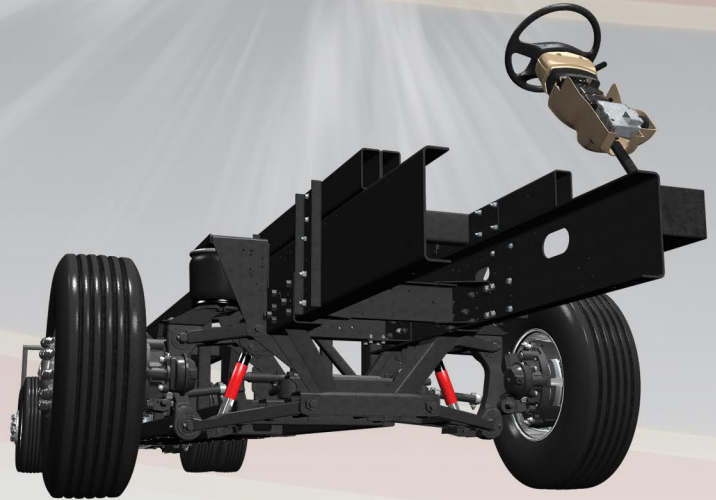
Competition

**No more unsafe & unsightly steps!**



## Exclusive to the REALM FS605 is the Spartan **K4605** chassis.

The K4605 is not only massive in stature, but boasts a best-in-class 20,000 lb. Independent Front Suspension, Cummins 605HP diesel engine, Torqued-Box Structural Frame, the **Spartan Advanced Protection System** & passive steering rear tag axle for incomparable handling and maneuverability. Once behind the wheel of a **Realm FS605**, you will instantly realize that this is the pinnacle of luxury motor coach driving performance.



### Independent Front Suspension

The independent front suspension is computer analyzed and custom tuned to provide optimal comfort and control.



### Passive Steer Tag Axle



### Featuring OnGuardACTIVE™

Spartan's Advanced Protection System® (APS), is the industry's first comprehensive set of RV-specific safety features designed to provide additional protection, security and value to coach buyers so you can focus on the road ahead.

### Other Features Include:

- ❑ Collision Mitigation System with Adaptive Cruise Control.
- ❑ Spartan Safe Haul™ (industry's only factory-chassis integrated air supply for tow vehicle brake systems).
- ❑ A 17 degree rear wheel cut means you can navigate the twists and tight spaces of RV parks and parking lots with greater confidence.
- ❑ Backing up your coach is hassle-free with our auto-alignment system straightening and locking the tag axle for precise maneuvering control.





# 2023 FORETRAVEL REALM FS605

## Interior Décor

## Countertops

## Floorplans

### SEVEN SEAS



The Foretravel REALM FS605 is available in six Luxury Villa floor plans that offer unprecedented livability and stately accommodations befitting any RV lifestyle.



LVB WITH SPA

### CAMBRIDGE



LVB

### SHERWOOD



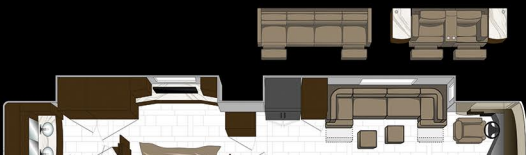
LVMS

### NOBLE - (Optional Dinette Chairs Shown)



LV1

### EXCALIBUR



LV2



LV3

Manufacturer's options, features, colors, floor plans, etc. are subject to change without notice. Some decorations and personal effects may be for demonstration only and not be a part of the available features list or sale price.

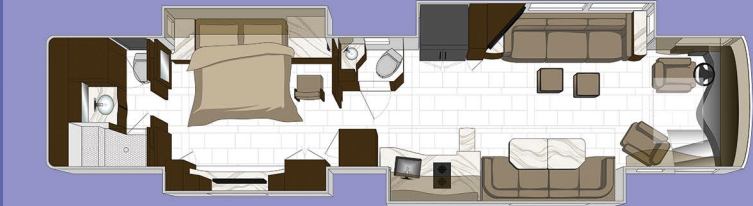




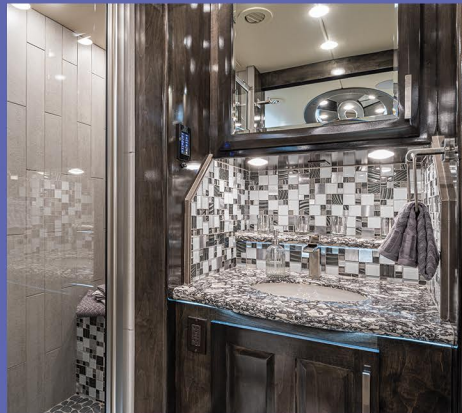
The LVMS is unlike any luxury motor coach in the world; offering multiple living & dining accommodations highlighted by the dual power adjustable dinette tables and extra large lounge as well as a master suite arrangement unlike any other.



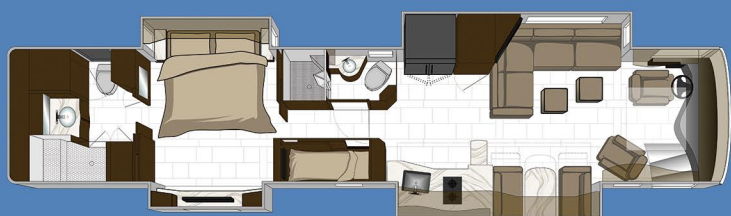
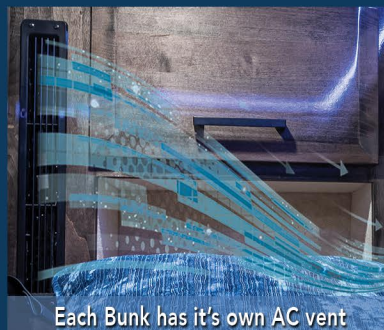
Shown in Excalibur & Polished Stone



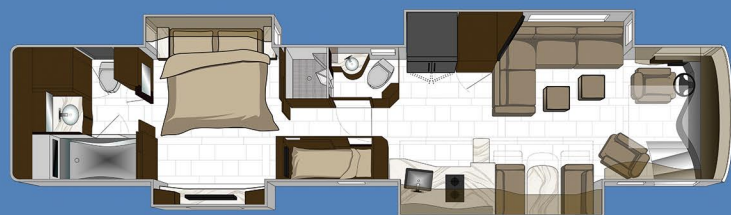
LVMS







LVB



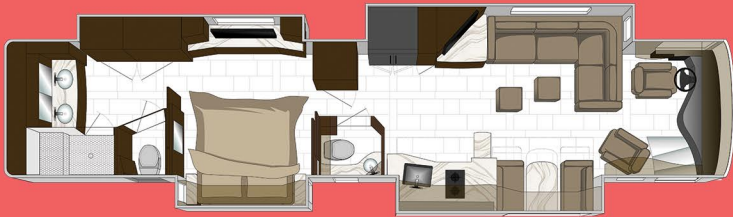
LVB WITH SPA







The LV1 is a bath and a half model highlighted by:  
 A mid-ship LED TV, extendable sofa, stack W/D, private water closet in master bath, power-lift bedroom LED TV, dual sink basins, massive wardrobe and large master shower with multiple jets.



LV1



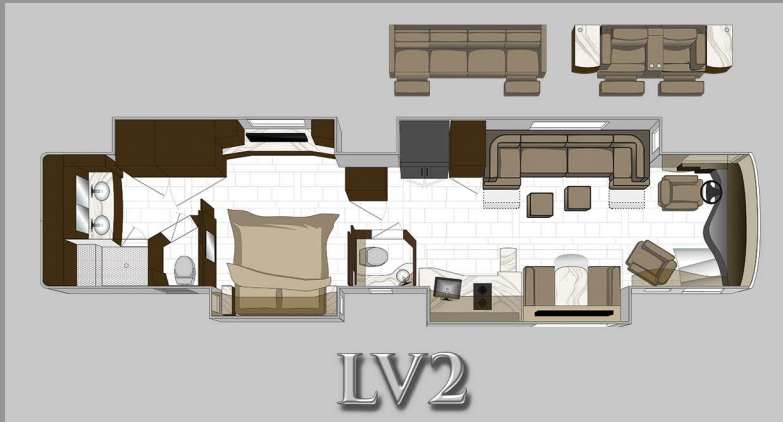
Shown in Sherwood & African Mahogany







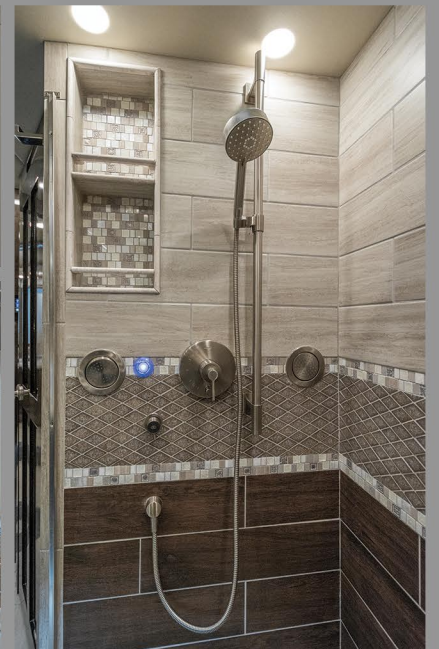
The LV2 is a bath and a half model, highlighted by:  
Power-lift bedroom LED TV, large tile shower, dual sink vanity,  
cedar lined closet including a built-in chest of drawers.  
Two other seating options are available in the LV2,  
motorized recliners or theatre seating with end tables.



Pull-Out Ottomans



Shown in Cambridge & Polished Stone







Shown in Noble & Walnut Gloss



The LV3 is a bath and a half model, highlighted by: Power-lift bedroom LED TV, large tile shower, dual sink vanity, cedar lined closet including a built-in chest of drawers. The over-sized fireplace, LED TV and custom residential furnishings gives the LV3 a beautiful and comforting quality.



LV3



Shown with Optional Dinette Chairs





# KNIGHT FALL





# APOLLO





# Distressed Copper





# Sterling





# CROSSBOW





# ARMOR



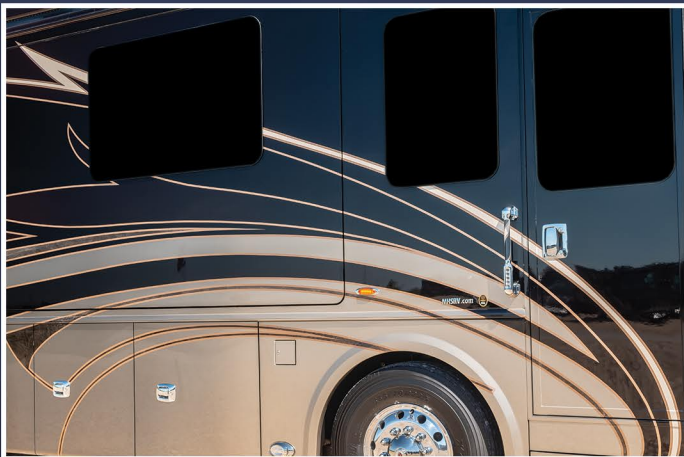


# poseidon



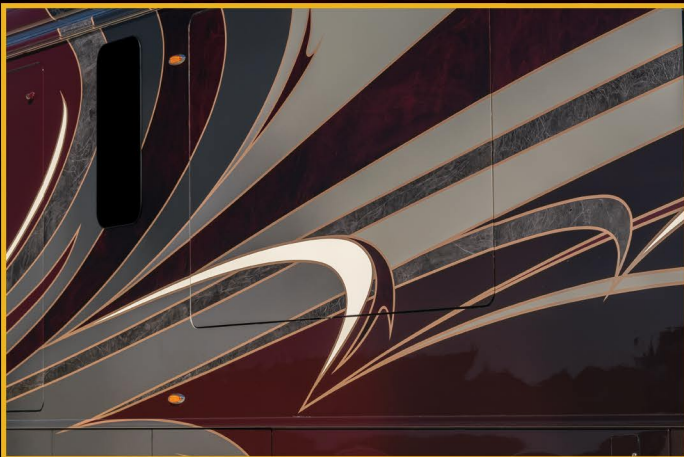
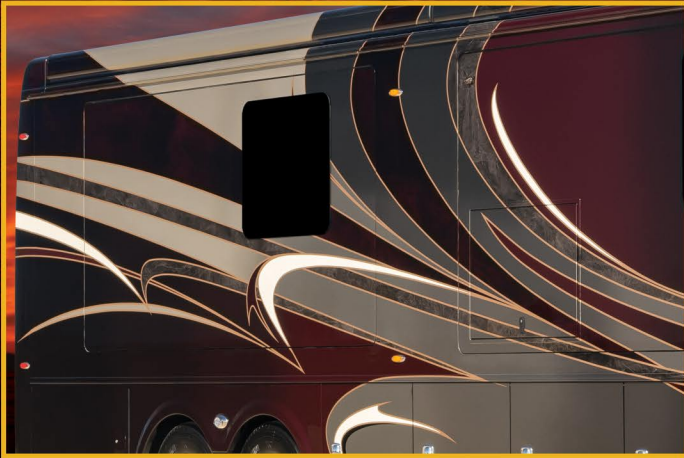


# Castle



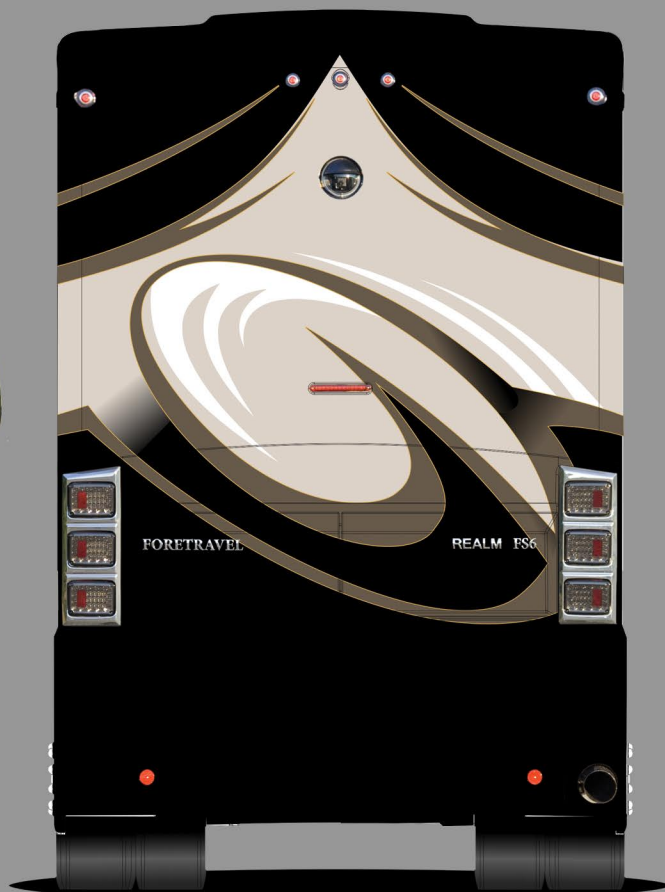
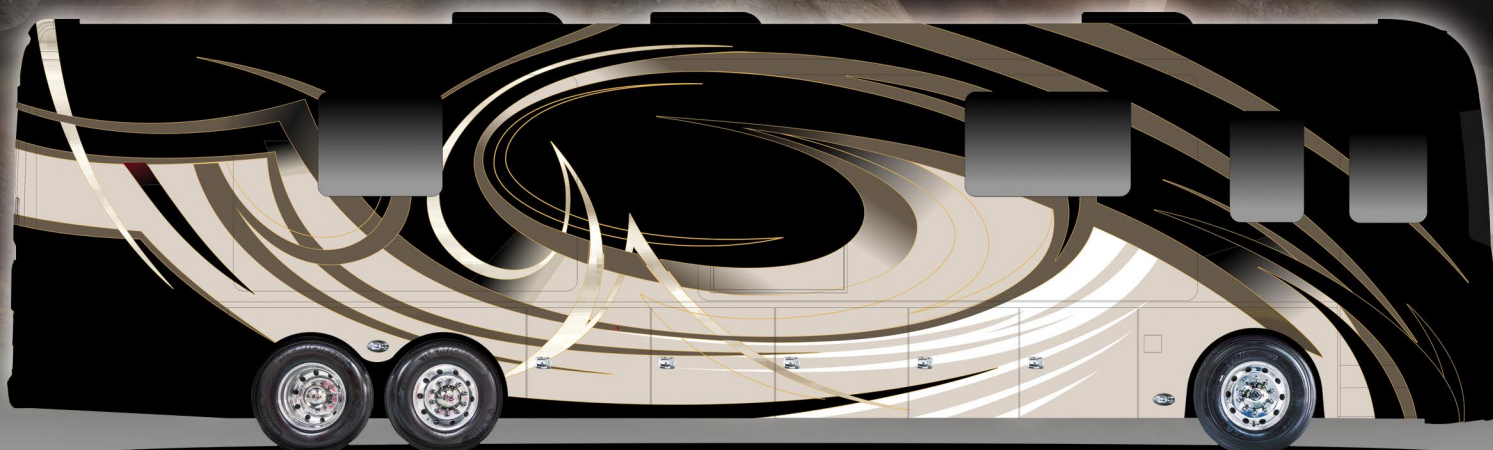


# Raven Red





# Camelot





## 2023 Foretravel Realm FS605 Specifications

### CHASSIS FEATURES

Spartan K4 Chassis

Cummins X15 605 HP Engine

- Peak HP 605 @ 1,800 RPM

Allison 6 Speed Transmission MH 4000

- Peak Torque 1,950 ft/lbs. @1,200 RPM

Cummins Connected Diagnostics

Valid Air Suspension w/ VDC Control

HWH Four Point Hydraulic Leveling Jack System

Spartan Safe Haul

Three Stage Engine Brake with On/Off Switch

ABS Anti-Lock Braking System with Automatic Slack Adjusters

Electronic Suspension Control System w/ Self Leveling Feature

Air Disc Brakes on all Wheels

Air Hose for Tire Service

Air line with Quick Connect

Alcoa Aluminum Wheels with Dura-Bright Protection on All Aluminum Wheels

270-amp: Leece-Neville Alternator

Automatic Traction Control (ATC)

Auxiliary 12V Air Compressor

Fuel Filter / Water Separator

Side Mounted Radiator

Electric Engine Block Heater

**Heated Automatic Air Reservoir Drains with Lanyard**

**Remote Engine Oil Fill and Transmission Level Check**

Front Axle - IFS (Independent Front Suspension)

Rear Axle Ratio: 4.30:1

Passive Steer Tag Axle with 17 Degree Turn Radius

20,000-lb. Towing Capacity/ 2,000-lb. Hitch Tongue with 7/4-Pin Plug

Michelin Front 365/ 70R 22.5" Rear 315/ 80R 22.5"

3 Year Spartan Scheduled Maintenance Included

No Deductible 24/7 Roadside Assistance First 3 Years

### EXTERIOR FEATURES

Foretravel Exclusive Fore-Slide™ Flangeless Pneumatic Seals on All Slide Rooms

Entry Door Awning

Passenger Side Patio Awnings, Two Roof Mounted Electric Patio Awnings with LED Lights on Passenger Side

Driver Side Patio Awning Shells, Two Roof Mounted Patio Awning Shells

Slide-out Topper Awnings - Painted Base Color

Outdoor Entertainment Package in Slide Room

**380-Watt Solar Panel Package**

Storage Bay:

Lights in Storage Bay

Freezer on Slide Out Tray

Side Hinge Storage Doors with Remote Electric Door Locks

Two Electric Sliding Cargo Trays

Carpeted Storage Bays

**Newly Redesigned Electronics Bay**

Dual-Pane Tinted and Insulated Windows

Easy View One-Piece Windshield

Electric Executive Entry Step

Cosmolite Roof - One Piece, Stain and UV Resistant

LED Lights:

Four Docking Lights

Color Changing Ground Accent Lighting

Halogen Low Beam Headlights

Marker Lights

Fog Lights

High Beam Headlamps

Porch Light

Foretravel Projector Courtesy Puddle Logo Light on Bottom of Entry Door

FRP Sub Floor (One-Piece)

Heated/ Remote Chrome Mirrors with LED Turn Signals

Fresh Water Plumbing Supply Manifold with **Newly Redesigned Stainless Steel Water Manifold Cover Panel**

Xtreme-Scheme™ Paint Designs with:

Paint Protection Below Windshield - Armor Coat

Full Body Exterior Paint with Multiple Clear Coat Finishes

Roof AC Drains

Trailer Wiring - 7 Pin Connector

Dual Fuel/ DEF Fill Locations (Newly Increased Fuel Venting for Ease of Filling)

**Improved Spartan Service Center Bay with Better Accessibility to Maintenance Items**

Utility Station:

50 Amp. Shoreline Connection

Laser Etched Stainless Steel Utility Bay Panels

Cable TV Connection

Electric Utility Reels - Water and Power

Fresh Water Connection

Tank Level Monitor Screen

120v Receptacle

Water Faucet with Soap Dispenser

Water Pump and Water Fill Controls

**Single Waste Tank with Electric Valves and Grey Water Bypass**

**Relocated Sewer Connection Above the Cargo Floor in Utility Bay**

**LED Accent Lights in Stainless Steel Panel**

### DASH and COCKPIT FEATURES

Push Button Ignition

15" Digital Valid Dash w/ VDC Control

Dimmable Accent LED Lights below the Dash

Wireless Charger at Passenger Chair

Illuminated Cup Holders

Passenger Magazine Rack with Phone Storage and

120V/ USB Charger Receptacle

Assist Handle

**New Color Match Steering Wheel and Dash Panel**

Padded Dash Top

2 Dual USB Charge Receptacles

Battery Boost Switch/ Auto-Charge; Generator Auto Start/ Stop



## 2023 Foretravel Realm FS605 Specifications

### DASH and COCKPIT FEATURES, Continued

Cameras: 7 Total

- One Total Vision Motorized Back-Up
- Two Side Mounted Integrated in Mirrors
- Four Perimeter 360 Birds Eye View

Dedicated Driver Monitor Camera Display for All Cameras

Dash AC Fan Controls for Co-Pilot

Infotainment System:

- GPS, AM, FM, Sirius/XM (Subscription Required) Bluetooth, USB, and iPod Compatibility
- Integrated Cockpit Controls
- Integrated Mobileye display
- **Increased Display Monitor Size to 9"**

Passenger Touch Screen Monitor with GPS and Camera Display

Map Lights, Pilot and Co-pilot

Suspended Power Adjustable Throttle and Brake Pedals

Villa 6-Way Power Adjustable Driver Chair with Heat, Cool and Massage Feature (With Haptic Warning System)

Villa 6-Way Power Adjustable Residential Co-Pilot Chair, Motorized Footrest with Heat, Cool and Massage Feature

Premiere Steer™ Steering Column Assist System

Power Tilt and Telescoping Steering Column

**Tri Touch** Smart Wheel with Radio Controls, Cruise, ICC Controls with Phone Control Integration

Electric Windshield/ Privacy Shade and Sunblock

### APPLIANCES • ELECTRONICS • LIGHTING • AUDIO-VIDEO

4K 50" LED Smart TV in Livingroom (Front Fold Down, Floorplan Dependent)

4K 65" LED Smart TV (LV2 Floorplan Only)

4K 50" LED Smart TV in Bedroom on Lift with **Soundbar**

4K 43" LED Smart TV Outside in Patio Entertainment Package With Soundbar

1080P 32" LED Above Sofa (Floorplan Dependent)

Silverleaf Total Coach Control System

Touch Pad Behind Drivers Chair for Lighting and Shade Operation

Apple iPad with AV and Multiplex Lighting Control

Wi-Fi Ranger, Converge Model

Consolidated Back Up Controls for Thermostats, Water Pump, Water Fill and RVC Reset

Audio-Video:

HDMI and CAT6 Shielded A/V Cabling

5.1 Surround Sound System in Living Room

Stereo Sound System in Bedroom

Blu-Ray Player

Winegard-Rayzar Automatic Domed HDTV Antenna

Stationary HD Satellite with Component Connection Plate (**Directv or Dish Network**)

Consolidated A/V Equipment Between Bunks

Appliances:

Convection Microwave

Residential Refrigerator

Two Burner Induction Cook Top Recessed with Cover

Bosch Stacked Washer/Dryer

Fisher Paykel Dish Drawer

Dimmable Interior LED Lighting:

Under Countertops                      Window Trim

Entry Door                                  Floor

LED Accent at Toe Kick of Cabinets

Toe Kicks

Reading Lamps

### INTERIOR LIVABILITY FEATURES

Hand Crafted Wood Cabinetry

Cambria Natural Quartz Countertops

Filtered Ice and Water Dispenser

**Uvia Lite added to Waste Tank (No Chemicals Required)**

Soft Close Pocket Doors (Single Door Only)

Tile Flooring Through-out Coach

Full Flush Floor Front to Rear

120V Outlet with Dual USB Charge Ports in LR and BR

Multiplex Lighting System

Powered Step-Well Cover with Two Switch Locations

Motorized Table (Floorplan Dependent)

Foretravel Professionally Designed Bedding and Throw Pillows

Foretravel Professionally Designed Window Treatment with Electric Day/ Night Shades

Built in Vacuum with Hose Connection

Beveled Mirrors on Medicine Cabinet

Fireplace (Floorplan Dependent)

Soft Close Full Extension Ball Bearing Drawer Tracks

Leather Coverings on Seating Surfaces

Sofa with Integrated Air Bed

Luxury Villa 2 Living Room Seating Options: Theatre Seating, Double Lounge Chaise and Sofa with Motorized Recliners on Each End

**Luxury Villa Bunk Models Have Newly Redesigned Bunks to Increase Interior Bunk Space**

**CPAP Provision above Bed with 120v Receptacle in Overhead**

**LED Accent Lights at Entry Steps**

### KITCHEN

Kitchen Pantry

Kitchen Countertop Extension

Single Bowl Kitchen Sink with Covers

Overhead Cabinet with Pull Out Can Rack and Shelves



## ***2023 Foretravel Realm FS605 Specifications***

### **BEDROOM**

Luxury King Size Mattress  
Windows in Bed Slide Sidewall Below the Overhead

### **BATH • SHOWER**

Reversible Variable Speed Electric Exhaust Fan in Bath and Toilet Room  
Body Sprayer in Shower  
Built-in Shower Bench  
Showermiser Hot Water Recirculation System  
Massaging Spa (Floor Plan Dependent)

### **HEATING • COOLING • ELECTRICAL**

Onan 12.5 Kw Diesel Generator in Quiet Box  
Aqua-Hot Hydronic Heating 450D (Floorplan Dependent)  
12-Volt Battery Disconnect  
Dual 3000-Watt Xantrex Inverter/Charger  
50-Amp Shoreline Connection  
Air-Conditioning and Heating with Offset Returns for Superior Quiet Operation  
Air-Conditioning, Ducted with 3 Roof Airstats 15,000 BTU's with Heat Pumps  
Auto Temp. Start for Generator  
Low-Battery Auto-Start for Generator  
Six 4D House Batteries/ Two Engine Batteries, Group 31 with 950 CCA- Each  
50-Amp Automatic Transfer Switch with Integrated Surge Suppression  
Gold Heat Floor Tile Heating System (3 Zones with Scheduling Capability)

### **SAFETY FEATURES**

All Coaches Built to RVIA Specifications  
Rear Egress Door with Integrated Ladder  
Spartan Advanced Protection System:

- Collision Mitigation with Adaptive Cruise Control and Active Braking
- Electronic Stability Control Automatically Brakes Individual Coach Wheels to Help Drivers Maintain Control During Extreme Steering Maneuvers.
- Automatic Traction Control (ATC)
- Spartan Safe Haul™ The Industry's Only Chassis Integrated Air Braking System for Tow Vehicles to Supply Optimal Braking Performance.

Lights:

- Auto Headlights
- Illuminated Entry-Door Assist Handle
- Daytime Running Lights

Tires:

- Tyron® Bead-Lock Tire Blowout Protection (Front Tires)
- **Valor GEN 3 TPMS** Tire Pressure Monitoring System with Display Integrated on Digital Dash

Fire and Carbon Monoxide:

- Fog-Maker Engine Fire Suppression System
- Rear Exit Door
- Fire Extinguishers
- Carbon Monoxide Detector
- Smoke Detector

Cameras (7 Total):

- Bird's Eye View 360 Camera System
- Total Vision Back-Up Camera
- Integrated on Side Mirrors

Mobile Eye Collision Avoidance and Lane Departure Technology with Intelligent High Beam Control  
Cameras Displayed on Passenger Monitor  
Haptic Warning System on Driver Chair  
Three GFI Protected Circuits  
Electronic Safe  
Security System with Keyless Entry  
Electric Storage Door Locks  
Back-up Alarm 107 decibels  
CSA Approved / Transport Canada Approved

### **CAPACITIES AND MEASUREMENTS**

<b>Fresh Water</b>	<b>120 Gallons</b>
<b>Waste Water Tank</b>	<b>160 Gallons</b>
Fuel Tank	200 Gallons
DEF Tank	15 Gallons
Interior Height	84" / 87" in Recesses
Exterior Height	13'2" - Top of Roof A/C's
Wheelbase	316"

### **CHASSIS RATINGS**

GVWR:	54,000 lb.
Front GAWR:	20,000 lb.
Rear GAWR:	20,000 lb.
Tag GAWR:	14,000 lb.
GCWR:	74,000 lb.



## 2023 Foretravel Realm FS605 Specifications

### WARRANTY

Coach:	2 Year/24,000 Miles
Chassis:	5 Year/75,000 Miles
Engine:	5 Year/100,000 Miles
Transmission:	5 Year/200,000 Miles
Chassis Frame & Cross Members	20 Year Transferable

### OPTIONS

Five Professionally Designed Interior Selections with Three Custom Wood Cabinetry Options (Natural Walnut, African Mahogany and Polished Stone)  
Eight Xtreme Scheme Exterior Color Selections  
Six Spacious Engineered Floor Plan Selections all with Four Foretravel Exclusive Fore-Slides Technology  
Outside Stainless Steel Trim Package (New Black Stainless Option Available)  
Ottoman with Integrated Cup Holder  
Head Hunter Mach 5 120V Water Pump (Bunk Floorplan Only)  
Aqua Hot Hydronic Heating 600D (Bunk Floorplan Only)  
LG Combination Washer / Dryer (Bunk Floorplan Only)  
**Additional House Batteries (2)**  
**Pressure Washer**



*\*Construction highlights, features & options are subject to change without notice and some standard features do not apply to all production units and or floor plans. All weights and measurements are approximate and may change without notice. \*All warranties are subject to exclusions & limitations; contact manufacturers for complete details. \*Maintenance program valid through network of authorized Spartan service facilities only. Contact Spartan for complete details and coverage information. Verify before purchase. The information contained in this brochure is believed to be accurate at the time of publication. However, during the model year, it may be necessary to make revisions and Foretravel reserves the right to make all such changes without notice, including prices, colors, materials, tile, equipment and specifications.*

*Foretravel, Inc. reserves the right to change or correct product specifications/pricing at any time without incurring obligations*

**2022 Foretravel REALM F605 Specifications**



# Spartan PremierCare Plan



## Freedom To Roam. Worry-Free.

Now one of the most reliable chassis on the market has a maintenance plan to match. PremierCare is a worry-free guarantee for up to the first three years\* of ownership. Owners can enjoy scheduled maintenance, roadside assistance, and hundreds of North American service centers. The Spartan PremierCare plan covers routine maintenance services, which protect your chassis, and can be performed with an annual visit to a Spartan authorized service center. Travel with confidence knowing all service and maintenance needs will be performed by a trained professional.

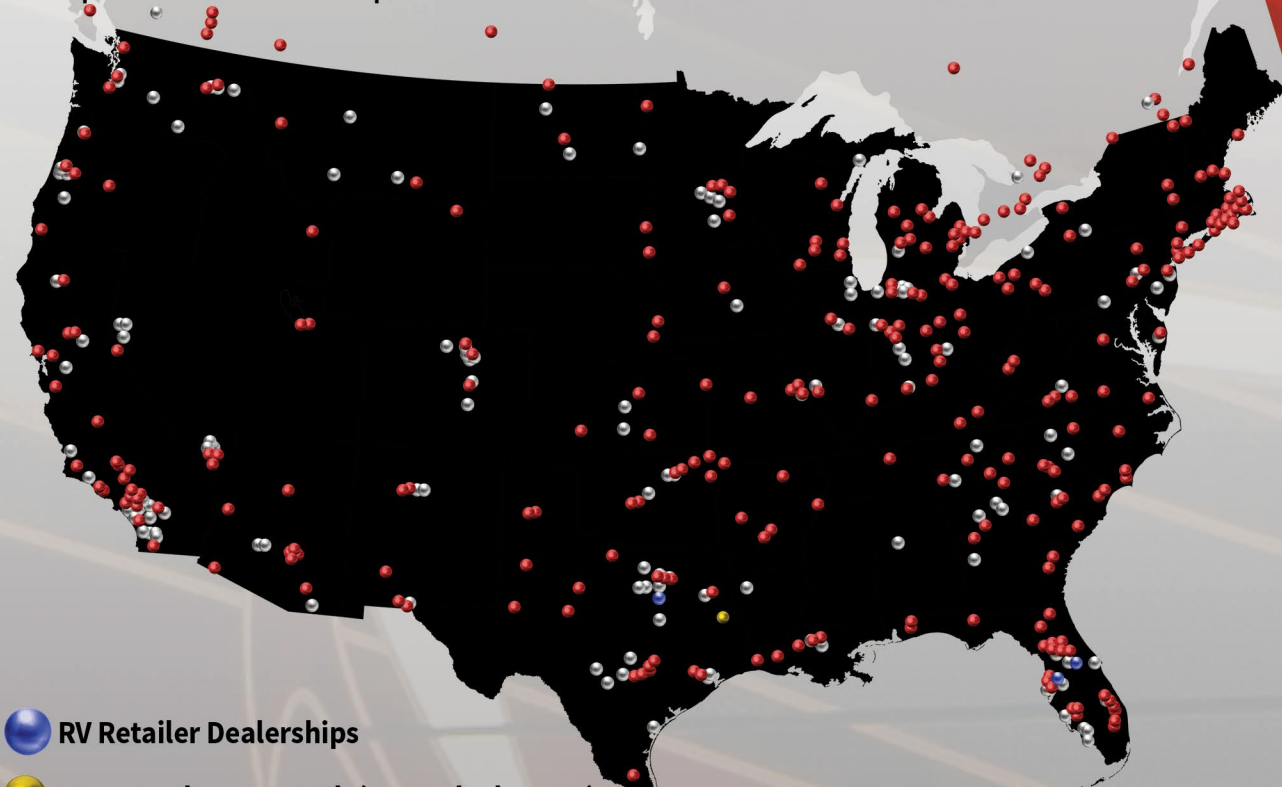


FORETRAVEL



## Nationwide Foretravel & Spartan Service Network

Feel free to explore anywhere — with service centers throughout the U.S. and Canada, Foretravel and Spartan are always close by. We believe the premier chassis deserves a premier maintenance plan.



RV Retailer Dealerships



Foretravel Motorcoach (Nacogdoches, TX)



Spartan Service Facilities



Foretravel Authorized & Customer Recommended Service Facilities

\*Restrictions apply, see dealer for details





# COMPLIMENTARY PREMIERCARE PLAN\*

EXCLUSIVE TO THE REALM FS605 - SPARTAN K4<sup>605</sup> CHASSIS

## 12 Month Maintenance

Air Filter  
Check Ride Height  
Engine Oil & Filter Change  
Fuel Filter Primary  
Fuel Filter Secondary  
Inspect & Clean Cooling Package  
Inspect and Clean Battery Connections  
Lube Chassis & Fan Drive  
Refresh Hub Fluid  
Replace Fan Gear Box Fluid  
Replace Rear Differential Fluid  
Torque U-Bolts

## 24 Month Maintenance

Air Filter  
Check Ride Height  
Engine Oil & Filter Change  
Fuel Filter Primary  
Fuel Filter Secondary  
Inspect & Clean Cooling Package  
Inspect and Clean Battery Connections  
Lube Chassis & Fan Drive  
Refresh Hub Fluid  
Replace Fan Gear Box Fluid  
Replace Rear Differential Fluid  
Torque U-Bolts  
Crankcase Filter 150,000 miles or 2 Years  
DEF Filter 200,000 miles or 2 Years  
Replace Air Dryer Filter  
Replace Coolant Filter

## 36 Month Maintenance

Air Filter  
Check Ride Height  
Engine Oil & Filter Change  
Fuel Filter Primary  
Fuel Filter Secondary  
Inspect & Clean Cooling Package  
Inspect and Clean Battery Connections  
Lube Chassis & Fan Drive  
Refresh Hub Fluid  
Replace Fan Gear Box Fluid  
Replace Rear Differential Fluid  
Torque U-Bolts  
Crankcase Filter 150,000 miles or 2 Years  
DEF Filter 200,000 miles or 2 Years  
Replace Air Dryer Filter  
Replace Coolant Filter  
Add ELC Coolant Extender & Check ELC Coolant Condition

**THREE  
YEARS  
OR  
50,000  
MILES**

**REALM FS605**

\*Maintenance must be completed at a Certified Spartan facility.  
Plan items subject to change per Spartan requirements.  
For complete details contact Spartan Chassis.





FORETRAVEL

REALM FS605



Your Kingdom Awaits...