

2023
MODEL YEAR

CLASS A DIESEL
ENDEAVOR

HR HOLIDAY RAMBLER
holidayrambler.com

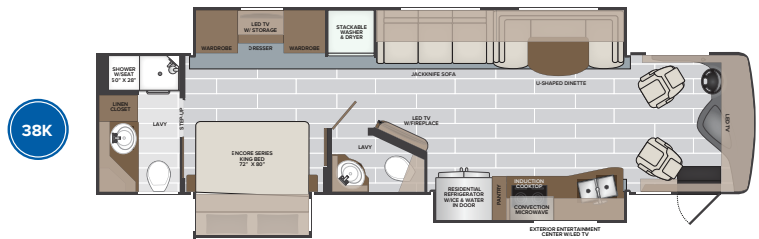
38K | 38N | 38W



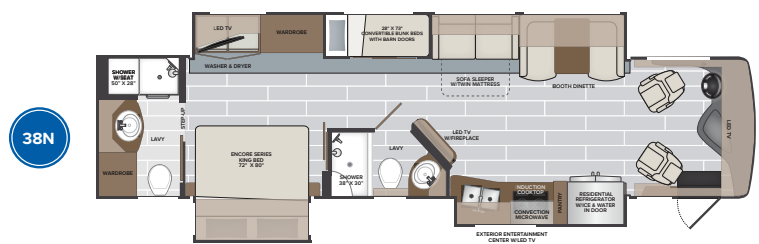
TOP FEATURES

- Freightliner® Custom Chassis XCM
- Freightliner® BrakeSync standard
- Freightliner® Tire Pressure Monitoring standard
- Cummins®, 6.7L, 360HP Engine
- Titan Bridge® foundation for added strength and durability
- Molded Fiberglass Roof - sleek appearance, low maintenance and lasting durability
- Dual monitors in cockpit for easy viewing of cameras and navigation
- Fireplace, All Floorplans
- Firefly MultiPlex Wiring w/7" Color Touchscreen
- Residential refrigerator, induction cook top, and convection microwave come as standard equipment.
- Wi-Fi Extender Pro Pack w/LTE, Cell Booster, 300W Solar Panel, Collision Mitigation by Mobileye®, Firefly Eclipse Module - Enabling Remote Access Via App Control
- V-Ride (enhanced stability) Allows you to take the turns the road gives you with confidence.
- Polished Porcelain Tile Floor w/living area Heated-Standard
- Generous interior and exterior storage plus large holding tank capacities, perfect for extended trips.
- Aqua Hot 400D provides unlimited hot water and comfortable interior heat.

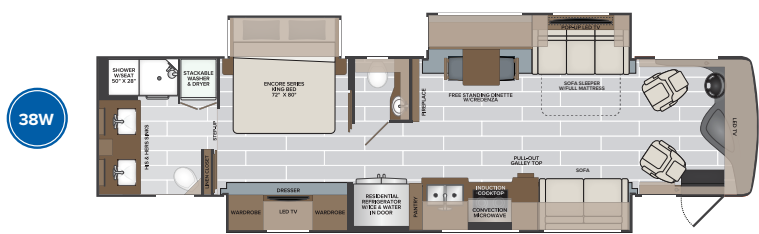
ENDEAVOR 38W
Shown in Monterey Graphics



38K



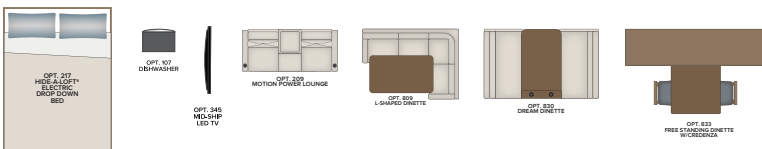
38N



38W

AVAILABLE OPTIONS

- Motion Power Lounge
- Hide-A-Loft™ Electric Drop Down Bed
- Mid-Ship LED TV (38W)
- Dishwasher
- L-Shaped Dinette (38N)
- Third Roof A/C
- Free Standing Dinette w/Credenza
- Technology Package: (Wi-Fi Extender Pro Pack w/LTE, Cell Booster, 300W Solar Panel, Collision Mitigation by Mobileye®, Firefly Eclipse Module - Enabling Remote Access Via App Control)



TO LOCATE A DEALER NEAR YOU VISIT OUR WEBSITE AT HOLIDAYRAMBLER.COM

2023
MODEL YEAR

CLASS A DIESEL
ENDEAVOR

HR HOLIDAY RAMBLER
holidayrambler.com

38K | 38N | 38W

BAYTOWN **NEW MY2023**



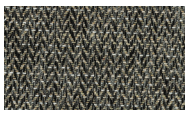
SOFA



LIVING ACCENT



BEDDING



VALANCE



BACKSPLASH

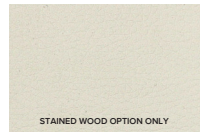


COUNTERTOP



FLOORING

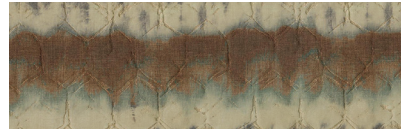
RIVIERA **NEW MY2023**



SOFA



SOFA



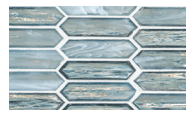
LIVING ACCENT



BEDDING



VALANCE



BACKSPLASH



COUNTERTOP



FLOORING

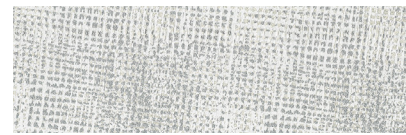
WATERFORD



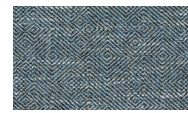
SOFA



LIVING ACCENT



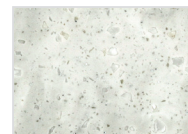
BEDDING



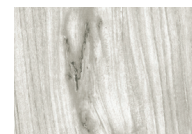
VALANCE



BACKSPLASH



COUNTERTOP



FLOORING



BOURBAN



WHISPERING WIND



FOSSIL
(PAINTED CABINETRY)



SUMMIT ASH
(PAINTED w/Glazed accents CABINETRY)

CHASSIS

MODEL	38K	38N	38W
Wheelbase	252"	252"	263"
Front GAWR (lbs)	12,400	12,400	12,400
Rear GAWR (lbs)	21,000	21,000	21,000
GCWR (lbs)	43,400	43,400	43,400
Hitch Rating Weight (lbs)	10,000	10,000	10,000
Tongue Weight (lbs)	1,000	1,000	1,000
Fuel Capacity (gal)	100	100	100

TITAN bridge® chassis
Model: Freightliner® XCM Series
Engine: Cummins ISB 6.7L
Transmission: Allison® 2,500 MH 6-Speed w/Electronic Shifter
Alternator: Delcom Remy 160 Amp
Torque: 800 lb.-ft. @ 1,800 RPM
Horsepower: 360HP



DIMENSIONS AND CAPACITIES

MODEL	38K	38N	38W
Overall Length	38' 8"	38' 8"	40' 1"
Overall Height	12' 10"	12' 10"	12' 10"
Overall Width (Maximum)	102"	102"	102"
Interior Height (Maximum)	84"	84"	84"
Interior Width (Maximum)	96"	96"	96"
Patio Awning Width	10' 8"	18' 0"	18' 0"
Interior Storage (cu. ft.)	140	148	132
Exterior Storage (cu. ft.)	127	127	142
Fresh Water Capacity (gal)	105	105	105
Grey Water Capacity (gal)	75	75	75
Black Water Capacity (gal)	50	50	50

NEW EXTERIOR MY2023

EXTERIORS



CUMBERLAND GAP



GRANITE PEAK



LANDSLIDE



MONTEREY

ENDEAVOR