



Kawasaki

2023 MOTORCYCLE RANGE





Kawasaki

Let the good times roll



SUPERSPORT

Ninja ZX10RR



Lime Green GN2

MULTI WORLD SUPERBIKE CHAMPIONSHIP WINNER

The Ninja ZX-10RR has what it takes to win: The limited-production (500 units worldwide) track-focused single-seat enhances the potential of the base model with further engine and chassis modifications, including a higher rev limit, Pankl titanium connecting rods and lightweight pistons. Aerodynamic body with integrated winglets, LED headlights, TFT colour instrumentation, with Smartphone connectivity plus updates derived from Kawasaki Racing Team World Superbike expertise.

QUICK SHIFTER, UP & DOWN

SHOWA SUSPENSION - FRONT & REAR

BREMBO DISCS & M50 MONOBLOC CALIPERS

PANKL HIGH-PERFORMANCE PARTS

MARCHESINI FORGED WHEELS

IMU-ENHANCED ELECTRONICS

ENGINE TYPE	4-Stroke, in-line 4 cylinder
--------------------	------------------------------

DISPLACEMENT	998 cm ³
---------------------	---------------------

POWER / TORQUE	150.0 kW / 111.8 N.m
-----------------------	----------------------

TRANSMISSION	6-Speed
---------------------	---------

CURB MASS	207 kg*
------------------	---------

SEAT HEIGHT	835 mm
--------------------	--------

L X W X H	2,085 x 750 x 1,185mm
------------------	-----------------------

FUEL CAPACITY	17 L
----------------------	------

BRAKES (F)	Dual 330 mm Brembo disc
-------------------	-------------------------

BRAKES (R)	Single 220 mm Disc
-------------------	--------------------

TYRE (F)	120/70 ZR17 M/C (58W)
-----------------	-----------------------

TYRE (R)	190/55 ZR17 M/C (75W)
-----------------	-----------------------

Model Code: ZX1002N

 **Kawasaki**

SUPERSPORT

Ninja ZX10R



Lime Green with
Ebony GN1



Pearl Robotic White with Metallic Diablo Black WT1

NINJA LEGENDARY HIGH PERFORMANCE

Built on proven performance from 6-World Championships. Technology delivering unrivalled agility, control and handling, next-level electronics, race-developed suspension & brake componentry, new chassis geometry and aerodynamic performance result in a rider centric design that continues to be the choice for premium road and track riding.

AERODYNAMIC STYLING + WINGLETS

INTEGRATED RIDER MODES

FULL COLOUR TFT SCREEN

SPORT-KAWASAKI TRACTION CONTROL (S-KTRC)

KAWASAKI QUICK SHIFTER (KQS)

ELECTRONIC CRUISE CONTROL

ENGINE TYPE	4-Stroke, in-line 4 cylinder
DISPLACEMENT	998 cm ³
POWER / TORQUE	149.3 kW / 114.9 N.m
TRANSMISSION	6-speed
CURB MASS	207 kg*
SEAT HEIGHT	835 mm

L X W X H	2,085 x 750 x 1,185 mm
FUEL CAPACITY	17 L
BRAKES (F)	Dual 330mm Brembo disc
BRAKES (R)	Single 220mm disc
TYRE (F)	120/70 ZR17 M/C (58W)
TYRE (R)	190/55 ZR17 M/C (75W)

Model Code: ZX1002L

 **Kawasaki**

SPORTS TOURER

Ninja H2™ SX



Metallic Diablo Black BK1



ACC
Adaptive Cruise Control



ESS
Emergency Stop Signal



SPIN
Smartphone Based
Infotainment App



BSD
Blind Spot Detection



VHA
Vehicle Hold Assist



ACC
Tyre Pressure
Monitoring System



KIPASS
Kawasaki Intelligent Proximity
Activation Start System

ENGINEERED TO BE FREE

The Kawasaki Ninja H2 SX - Supercharge your journey, more technology, comfort and convenience for Kawasaki's unique supercharged sport tourer. From the Japanese company known for firsts - the only massed-production motorcycle to be fitted with Bosch's Advanced Rider Assistance System, (ARAS) provides real world benefits including adaptive cruise control and blind-spot detection. Integrated into the new 6.5" colour TFT instrumentation is Kawasaki's SPIN Infotainment system.

TYRE PRESSURE MONITORING SYSTEM (TPMS)

VEHICLE HOLD ASSIST (VHA)

AUTO HI-BEAM (AHB)

FORWARD COLLISION WARNING

KIPASS KEY FOB

BLIND SPOT DETECTION

ENGINE TYPE	Supercharged in-line 4 cylinder
DISPLACEMENT	998 cm ³
POWER / TORQUE	147.1 kW / 137.3 N.m
TRANSMISSION	6-speed
CURB MASS	266 kg*
SEAT HEIGHT	820 mm

L X W X H	2,175 x 790 x 1,260 mm
FUEL CAPACITY	19 L
BRAKES (F)	Dual 320mm discs
BRAKES (R)	Single 250mm disc
TYRE (F)	120/70 ZR17 M/C (58W)
TYRE (R)	190/55 ZR17 M/C (75W)

Model Code: ZX1002P



SPORTS TOURER

Ninja

H2™ SX **SE**

SUPER CHARGED

HD Emerald Blazed Green/Metallic Diablo Black GN2



KECS
Kawasaki Electronic Control Suspension



ACC
Adaptive Cruise Control



ESS
Emergency Stop Signal



SPIN
Smartphone Based Infotainment App



BSD
Blind Spot Detection



VHA
Vehicle Hold Assist



ACC
Tyre Pressure Monitoring System



KIPASS
Kawasaki Intelligent Proximity Activation Start System

UNIQUE SUPERCHARGED SPORTS TOURER

The Ninja H2 SX SE includes all of the great equipment of the Ninja H2 SE plus Kawasaki Electronic Control Suspension with Skyhook technology and Brembo stylema front brake calipers. The 2023 Ninja H2 SX have the new Auto Hi-Beam (AHB) feature.

KECS (KAWASAKI ELECTRONIC CONTROL SUSPENSION)
TYRE PRESSURE MONITORING SYSTEM (TPMS)
VEHICLE HOLD ASSIST (VHA)
AUTO HI-BEAM (AHB)
GRIP HEATERS AS STANDARD
FORWARD COLLISION WARNING
BLIND SPOT DETECTION

ENGINE TYPE	Supercharged in-line 4 cylinder
DISPLACEMENT	998 cm ³
POWER / TORQUE	147.1 kW / 137.3 N.m
TRANSMISSION	6-speed
CURB MASS	267 kg*
SEAT HEIGHT	820 mm

L X W X H	2,175 x 790 x 1,260 mm
FUEL CAPACITY	19 L
BRAKES (F)	Dual 320mm Brembo discs
BRAKES (R)	Single 250mm disc
TYRE (F)	120/70 ZR17 M/C (58W)
TYRE (R)	190/55 ZR17 M/C (75W)

Model Code: ZX1002R

 **Kawasaki**

HYPERSPORT

Ninja
H2



Mirror Coated Spark Black GY1

NINJA H2 BUILT BEYOND BELIEF

The Ninja H2 streetbike's supercharged engine creates unprecedented power for remarkable acceleration. The heavy growl of the boosted litre-class engine is a sound the streets won't soon forget. Paired with a multitude of high-performance components to ensure an unforgettably effortless, yet forceful experience.

STREET-LEGAL HYPERSPORT PERFORMANCE
KYB AOS-II FORK AND ÖHLINS TTX36 SHOCK
KAWASAKI TRACTION CONTROL (KTRC-9 MODES)
ALL LED LIGHTING
KAWASAKI QUICK SHIFTER
SMART PHONE CONNECTIVITY

ENGINE TYPE	Supercharged in-line 4 cylinder
DISPLACEMENT	998 cm ³
POWER / TORQUE	170.0 kW / 141.7 N.m
TRANSMISSION	6-speed
CURB MASS	238 kg*
SEAT HEIGHT	825 mm

L X W X H	2,085 x 770 x 1,225 mm
FUEL CAPACITY	17 L
BRAKES (F)	Dual 330 mm Brembo discs
BRAKES (R)	Single 250 mm disc
TYRE (F)	120/70 ZR17 M/C (58W)
TYRE (R)	200/55 ZR17 M/C (78W)

Model Code: ZX1002J

 **Kawasaki**

HYPERSPORT

Ninja
H2R



Mirror Coated Matte Spark Black GY3

NINJA H2R BUILT BEYOND BELIEF

Ninja H2R motorcycle goes beyond the boundaries of any other Kawasaki motorcycle. Born of unprecedented inter-company collaboration within the Kawasaki Heavy Industries, Ltd. (KHI) Group, the world's only limited production supercharged hypersport model represents the pinnacle of Kawasaki engineering, delivering astonishing acceleration and mind-bending top speed suitable only for closed courses.

CLOSED COURSE ONLY HYPERSPORT 1

HIGH PERFORMANCE RACING SUSPENSION

BREMBO STYLEMA BRAKE CALIPERS

LIGHT TRELIS FRAME

KAWASAKI LAUNCH CONTROL

LIGHTWEIGHT CAST ALUMINIUM WHEELS

ENGINE TYPE	Supercharged in-line 4 cylinder
--------------------	---------------------------------

DISPLACEMENT	998 cm ³
---------------------	---------------------

POWER / TORQUE	228.0 kW / 165.0 N.m
-----------------------	----------------------

TRANSMISSION	6-speed
---------------------	---------

CURB MASS	216 kg*
------------------	---------

SEAT HEIGHT	830 mm
--------------------	--------

L X W X H	2,070 x 850 x 1,160 mm
------------------	------------------------

FUEL CAPACITY	17 L
----------------------	------

BRAKES (F)	Dual 330mm Brembo discs
-------------------	-------------------------

BRAKES (R)	Single 250mm disc
-------------------	-------------------

TYRE (F)	120/600 (R17)
-----------------	---------------

TYRE (R)	190/650 (R17)
-----------------	---------------

Model Code: ZX1000Y

 **Kawasaki**

SUPERSPORT

Ninja ZX-14R



Metallic Matte Graphene Steel Gray with Flat Ebony Type 2 GY1

KING OF THE QUARTER MILE

Renowned for its dominance at the drag strip. The Ninja ZX-14R is King of the Quarter Mile. An enormous 1441cc engine, premium onboard electronics and uncompromising refinement give the Ninja ZX-14R the ability to take on the track or the backroads with sophisticated ease.

OHLINS TTX39 SHOCK

BACK-TORQUE LIMITING SLIPPER CLUTCH

3-MODE KAWASAKI TRACTION CONTROL (KTRC)

BREMBO 4-PISTON M50 MONOBLOC CALIPERS

KAWASAKI TRACTION CONTROL

UNIQUE MONOCOQUE ALUMINIUM FRAME

ENGINE TYPE	4-Stroke, in-line 4 cylinder
DISPLACEMENT	1,441 cm ³
POWER / TORQUE	147.2 kW / 158.2 N.m
TRANSMISSION	6-speed
CURB MASS	269 kg*
SEAT HEIGHT	800 mm

L X W X H	2,170 x 770 x 1,170 mm
FUEL CAPACITY	22 L
BRAKES (F)	Dual 310 mm Brembo discs
BRAKES (R)	Single 250 mm disc
TYRE (F)	120/70 ZR17 M/C (58W)
TYRE (R)	190/50 ZR17 M/C (73W)

Model Code: ZX1400J

 **Kawasaki**

SPORT

Ninja

1000SX



Ninja 1000 SX
Emerald Blazed Green with
Metallic Diablo Black GN1

*Kawasaki Genuine Panniers available



Ninja 1000 SX
Metallic Matte Sovereign Red with Metallic Diablo Black RD1

BEST OF BOTH WORLDS

The Ninja 1000SX has character without compromise. Infused with the Ninja spirit craved by discerning solo sportsbike riders, the Ninja 1000SX takes the concept further with SX sport touring versatility to share with a fellow traveller. From traction control to cruise control, the Ninja 1000SX has the tech for the ride.

QQS KAWASAKI QUICK SHIFTER UP & DOWN
IMU-ENHANCED ELECTRONICS PACKAGE
KAWASAKI TRACTION CONTROL (KTRC)
KAWASAKI INTELLIGENT ANTI-LOCK
BRAKE SYSTEM (KIBS)
ELECTRONIC CRUISE CONTROL
SMARTPHONE CONNECTIVITY

ENGINE TYPE	4-Stroke, in-line 4 cylinder
DISPLACEMENT	1,043 cm ³
POWER / TORQUE	104.5 kW / 111.0 N.m
TRANSMISSION	6-speed
CURB MASS	235 kg*
SEAT HEIGHT	835 mm

L X W X H	2,100 x 825 x 1,190 mm
FUEL CAPACITY	19 L
BRAKES (F)	Dual 300 mm petal disc
BRAKES (R)	Single 250 mm disc
TYRE (F)	120/70 ZR17 M/C (58W)
TYRE (R)	190/50 ZR17 M/C (73W)

Model Code: ZX1002K

 **Kawasaki**

SUPERSPORT

Ninja ZX-6R 636



Lime Green with Ebony GN2

RULE THE TRACK. RUN THE STREETS.

Legendary Ninja performance. The Ninja ZX-6R motorcycle boasts a potent 636cc engine, advanced electronics and a lightweight chassis. The “636” has been optimised for both street and the track, offering an exhilarating experience in a wide range of riding situations.

KAWASAKI QUICK SHIFTER (KQS)
ASSIST AND SLIPPER CLUTCH
TWIN LED HEADLIGHTS AND TAILLIGHT
BATTLAX HYPERSPORT S22 TYRES
TRACTION CONTROL AND POWER MODES
SHOWA SFF-BP FORKS

ENGINE TYPE	4-Stroke, in-line 4 cylinder
--------------------	------------------------------

DISPLACEMENT	636 cm ³
---------------------	---------------------

POWER / TORQUE	95.4 kW / 70.8 N.m
-----------------------	--------------------

TRANSMISSION	6-speed
---------------------	---------

CURB MASS	196 kg
------------------	--------

SEAT HEIGHT	830 mm
--------------------	--------

L X W X H	2,025 x 710 x 1,100 mm
------------------	------------------------

FUEL CAPACITY	17 L
----------------------	------

BRAKES (F)	Dual 310 mm discs
-------------------	-------------------

BRAKES (R)	Single 220 mm disc
-------------------	--------------------

TYRE (F)	120/70 ZR17 M/C (58W)
-----------------	-----------------------

TYRE (R)	180/55 ZR17 M/C (73W)
-----------------	-----------------------

Model Code: ZX636G

 **Kawasaki**

SPORT

Ninja 650

LAMS APPROVED

Kawasaki
LEARNER
APPROVED



Metallic Matte Graphene
Steel Gray with Ebony BK1

Lime Green with Ebony GN1

RIDE BOLD

Embodying Ninja sportbike lineage, the Ninja 650 motorcycle comes packed with a sporty 649cc engine, sharp styling and next-level technology advancements such as 3-mode Kawasaki Traction Control. Unmistakable sport performance is met with an upright riding position for exciting daily commutes, while a supreme level of attitude reminds you of its legendary heritage.

LOW SEAT HEIGHT

ASSIST & SLIPPER CLUTCH

BLUETOOTH SMARTPHONE CONNECTIVITY

TFT COLOUR INSTRUMENT PANEL

DUNLOP SPORTMAX ROADSPORT 2 TYRES

3-MODE KAWASAKI TRACTION CONTROL

ENGINE TYPE	4-Stroke parallel twin
DISPLACEMENT	649 cm ³
POWER / TORQUE	37.8 kW / 57.0 N.m
TRANSMISSION	6-speed
CURB MASS	192 kg*
SEAT HEIGHT	790 mm

L x W x H	2,055 x 740 x 1,145 mm
FUEL CAPACITY	15 L
BRAKES (F)	Dual 300 mm petal discs
BRAKES (R)	Single 220 mm petal disc
TYRE (F)	120/70 ZR17 M/C (58W)
TYRE (R)	160/60 ZR17 M/C (69W)

Model Code: EX650P

 **Kawasaki**

SPORT

Ninja 650

FULL POWER



Metallic Matte Graphene Steel Gray with Ebony BK1

RIDE BOLD

Embodying Ninja sportbike lineage, the Ninja 650 motorcycle comes packed with a sporty 649cc engine, sharp styling and next-level technology advancements such as 3-mode Kawasaki Traction Control. Unmistakable sport performance is met with an upright riding position for exciting daily commutes, while a supreme level of attitude reminds you of its legendary heritage.

LOW SEAT HEIGHT

ASSIST & SLIPPER CLUTCH

BLUETOOTH SMARTPHONE CONNECTIVITY

TFT COLOUR INSTRUMENT PANEL

DUNLOP SPORTMAX ROADSPORT 2 TYRES

3-MODE KAWASAKI TRACTION CONTROL

ENGINE TYPE	4-Stroke parallel twin
DISPLACEMENT	649 cm ³
POWER / TORQUE	50.2 kW / 64.0 N.m
TRANSMISSION	6-speed
CURB MASS	192 kg*
SEAT HEIGHT	790 mm

L x W x H	2,055 x 740 x 1,145 mm
FUEL CAPACITY	15 L
BRAKES (F)	Dual 300 mm petal discs
BRAKES (R)	Single 220 mm petal disc
TYRE (F)	120/70 ZR17 M/C (58W)
TYRE (R)	160/60 ZR17 M/C (69W)

Model Code: EX650P

 **Kawasaki**

SPORT

Ninja 400

LAMS APPROVED

Kawasaki
LEARNER
APPROVED



Ninja 400
Pearl Blizzard White with
Metallic Carbon Gray WT1



Ninja 400
Metallic Carbon Gray with
Metallic Matte Carbon Gray GY1

Ninja 400
Lime Green with Ebony GN1

EVERYDAY EPIC SPORT RIDING

The Ninja 400 twin cylinder has the largest displacement engine in the category. Delivering smooth easy-to-use power for maximum rider confidence for both learners and experienced riders. Low seat height, assist and slipper clutch and ABS, make the Ninja 400 a fun and easy to ride motorcycle.

ASSIST & SLIPPER CLUTCH
LED HEADLIGHTS
LIGHTWEIGHT TRESSIS FRAME
MULTI-FUNCTION INSTRUMENTATION
UNI-TRACK REAR SUSPENSION
NIMBLE & AGILE HANDLING

ENGINE TYPE	4-stroke parallel twin	L x W x H	1,990 x 710 x 1,120 mm
DISPLACEMENT	399 cm ³	FUEL CAPACITY	14 L
POWER / TORQUE	35.0 kW / 37.0 N.m	BRAKES (F)	Single 310 mm petal disc
TRANSMISSION	6-speed	BRAKES (R)	Single 220 mm petal disc
CURB MASS	168 kg*	TYRE (F)	110/70 R17 M/C (54H)
SEAT HEIGHT	785 mm	TYRE (R)	150/60 R17 M/C (66H)

Model Code: EX400L

 **Kawasaki**



H2



Metallic Phantom Silver with Metallic Carbon Gray SL2

SUPERCHARGED Z

Z H2. Kawasaki's ultimate street fighter is centred on a balanced supercharged engine. Minimal body work and maximum attitude. Great power required next-level technology to harness supercharged output. Advanced rider support enable you to take to the streets with confidence.

KAWASAKI QUICK SHIFTER
BREMBO BRAKE CALIPERS
COLOUR TFT LCD SCREEN
SMARTPHONE CONNECTIVITY
INTEGRATED RIDING MODES
LAUNCH CONTROL MODE

ENGINE TYPE	Supercharged in-line 4 cylinder
DISPLACEMENT	998 cm ³
POWER / TORQUE	147.1 kW / 137.0 N.m
TRANSMISSION	6-speed
CURB MASS	239 kg*
SEAT HEIGHT	830 mm

L x W x H	2,085 x 810 x 1,130 mm
FUEL CAPACITY	19 L
BRAKES (F)	Dual 320 mm Brembo discs
BRAKES (R)	Single 260 mm disc
TYRE (F)	120/70 ZR17 M/C (58W)
TYRE (R)	190/55 ZR17 M/C (75W)

Model Code: ZR1000K

Z 1000



Metallic Matte Carbon Gray with Emerald Blazed Green GY1

SUPER NAKED THRILLS

The Z1000 strips off all unnecessary flourishes to boldly highlight the functionality of its parts. The sculpted bodywork was carefully crafted to bring the aggressive Z design to the next level. Its appearance and performance can be expressed by the word Sugomi.

INTOXICATING INTAKE HOWL
 ASSIST AND SLIPPER CLUTCH
 ALL LED LIGHTING
 WIDE-SET FAT BAR
 LIGHTWEIGHT WHEELS
 SEPARATE FUNCTION FORK - BIG PISTON

ENGINE TYPE	4-stroke, in-line 4 cylinder
DISPLACEMENT	1,043 cm ³
POWER / TORQUE	105.0 kW / 111.0 N.m
TRANSMISSION	6-speed
CURB MASS	221 kg*
SEAT HEIGHT	815 mm

L x W x H	2,045 x 790 x 1,055 mm
FUEL CAPACITY	17 L
BRAKES (F)	Dual 310 mm petal discs
BRAKES (R)	Single 250 mm petal disc
TYRE (F)	120/70 ZR17 M/C (58W)
TYRE (R)	190/50 ZR17 M/C (73W)

Model Code: ZR1000H

SPORT

Z 900



Ebony with Metallic Matte
Graphene Steel Gray GY1

Metallic Phantom Silver with Metallic Carbon Gray SL1

EXCITE THE SENSES

The Z900 epitomises Kawasaki's belief of what the ideal supernaked should be. At 948cc with an ultra-lightweight chassis, every ride is met with exceptional power, responsiveness and excitement. Make your presence known on the streets with signature Sugomi-inspired styling and a commanding ride position.

RESPONSIVE FRONT & REAR SUSPENSION
STRONG & LIGHTWEIGHT TRELLIS FRAME
KTRC (KAWASAKI TRACTION CONTROL)
TFT COLOUR INSTRUMENTATION
SMART PHONE CONNECTIVITY
ALL LED LIGHTING

ENGINE TYPE	4-stroke, inline 4 cylinder
--------------------	-----------------------------

DISPLACEMENT	948 cm ³
---------------------	---------------------

POWER / TORQUE	92.2 kW / 98.6 N.m
-----------------------	--------------------

TRANSMISSION	6-speed
---------------------	---------

CURB MASS	212 kg*
------------------	---------

SEAT HEIGHT	820 mm
--------------------	--------

L x W x H	2,070 x 825 x 1,080 mm
------------------	------------------------

FUEL CAPACITY	17 L
----------------------	------

BRAKES (F)	Dual 300 mm petal discs
-------------------	-------------------------

BRAKES (R)	Single 250 mm petal disc
-------------------	--------------------------

TYRE (F)	120/70 ZR17 M/C (58W)
-----------------	-----------------------

TYRE (R)	180/55 ZR17 M/C (73W)
-----------------	-----------------------

Model Code: ZR900F

 **Kawasaki**

RETRO SPORT

Z900RS



Metallic Diablo Black BK1

Metallic Diablo Black with Metallic Imperial Red RD1

THE 1972 LEGEND RETURNS

There's no place for fake in the lifestyle you choose. Kawasaki alone has the heritage to deliver yesterday's values to today's riders in a truly authentic Modern Classic bike. The visceral spirit of a 1970s legend – Kawasaki's original king of cool Z1 – finds expression in the Z900RS, to satisfy the very essence of the rider you are now.

ICONIC TEARDROP TANK
ROUND LED HEADLAMP
BULLET SHAPED ANALOGUE DIALS
TUNED STAINLESS STEEL EXHAUST SYSTEM
ASSIST AND SLIPPER CLUTCH
KTRC (KAWASAKI TRACTION CONTROL)

ENGINE TYPE	4-stroke, in-line 4 cylinder
DISPLACEMENT	948 cm ³
POWER / TORQUE	82.0 kW / 98.5 N.m
TRANSMISSION	6-speed
CURB MASS	214 kg*
SEAT HEIGHT	835 mm

L x W x H	2,100 x 865 x 1,150 mm
FUEL CAPACITY	17 L
BRAKES (F)	Dual 300 mm discs
BRAKES (R)	Single 250 mm disc
TYRE (F)	120/70 ZR17 M/C (58W)
TYRE (R)	180/55 ZR17 M/C (73W)

Model Code: ZR900C

 **Kawasaki**

RETRO SPORT

Z650RS

LAMS APPROVED

Kawasaki
LEARNER
APPROVED



Metallic Spark Black BK1

Candy Emerald Green GN1

A TRUE MIDDLEWEIGHT RETRO

Z650RS, a retro sport model that combines timeless good looks inherited from the Z900RS with a compact, easy-handling package that riders will love to enjoy daily. Flexible and approachable, the stylishly casual new Z650RS retro sport model is another exciting option for riders looking for a rich motorcycle life.

RELAXED RIDING POSITION
ASSIST & SLIPPER CLUTCH
ROUND LED HEADLIGHT
BULLET-SHAPED ANALOGUE DIALS
SLIM FUEL TANK
SPOKE-STYLE CAST WHEELS

ENGINE TYPE 4-Stroke parallel twin

DISPLACEMENT 649 cm³

POWER / TORQUE 37.8 kW / 59.0 N.m

TRANSMISSION 6-speed

CURB MASS 186 kg*

SEAT HEIGHT 800 mm

L x W x H 2,065 x 800 x 1,115 mm

FUEL CAPACITY 12 L

BRAKES (F) Dual semi-floating 300 mm discs

BRAKES (R) Single 220 mm disc

TYRE (F) 120/70 ZR17 M/C (58W)

TYRE (R) 160/60 ZR17 M/C (69W)

Model Code: ER650M

 **Kawasaki**

SPORT

Z650

LAMS APPROVED

Kawasaki
LEARNER
APPROVED



Metallic Matte Graphene
Steel Gray with Ebony GY1

Metallic Phantom Silver with Metallic Carbon Gray SL1

A LAMS BIKE THAT DELIVERS EXCITEMENT

Aggressive meets supernaked with this ideal blend of sporty performance and everyday versatility. Featuring next-level technology such as 3-mode Kawasaki Traction Control and a strong 649cc engine, the Z650 naked sportbike is a compact middleweight without equal.

TFT COLOUR INSTRUMENTATION
SMARTPHONE CONNECTIVITY
3-MODE KAWASAKI TRACTION CONTROL
DUNLOP SPORTMAX ROADSPORT 2 TYRES
ASSIST AND SLIPPER CLUTCH
HORIZONTAL REAR BACK-LINK SUSPENSION

ENGINE TYPE	4-Stroke parallel Twin
--------------------	------------------------

DISPLACEMENT	649 cm ³
---------------------	---------------------

POWER / TORQUE	37.8 kW / 57.0 N.m
-----------------------	--------------------

TRANSMISSION	6-speed
---------------------	---------

CURB MASS	187 kg*
------------------	---------

SEAT HEIGHT	790 mm
--------------------	--------

L x W x H	2,055 x 765 x 1,065 mm
------------------	------------------------

FUEL CAPACITY	15 L
----------------------	------

BRAKES (F)	Dual 300 mm petal discs
-------------------	-------------------------

BRAKES (R)	Single 220 mm petal disc
-------------------	--------------------------

TYRE (F)	120/70 ZR17 M/C (58W)
-----------------	-----------------------

TYRE (R)	160/60 ZR17 M/C (69W)
-----------------	-----------------------

Model Code: ER650N

 **Kawasaki**

SPORT

Z 400

LAMS APPROVED

Kawasaki
LEARNER
APPROVED



Metallic Matte Graphene Steel Gray with Metallic Spark Black GY1



Candy Lime Green Type 3 with Metallic Flat Spark Black GN2

Metallic Spark Black with Metallic Matte Graphene Steel Gray BK1

BUILT TO BE SEEN

A fierce, lightweight supernaked built for the streets. Taking cues from its Z brethren, the unmistakable streetfighter styling complements an aggressive attitude. The Z400 motorcycle was built to deliver light, predictable and natural handling for a confident riding experience. The upright riding position, low seat height and wide handlebar put the rider in the ideal position for active control, facilitating dynamic, sporty riding.

ASSIST AND SLIPPER CLUTCH
LIGHTWEIGHT CHASSIS
POSITIVE NEUTRAL FINDER
QUAD LED HEADLAMPS
AGILE AND PRECISE HANDLING
LOW SEAT HEIGHT

ENGINE TYPE	4-Stroke parallel Twin
DISPLACEMENT	399 cm ³
POWER / TORQUE	35.0 kW / 37.0 N.m
TRANSMISSION	6-speed, return
CURB MASS	167 kg*
SEAT HEIGHT	785 mm

L x W x H	1,990 x 800 x 1,055 mm
FUEL CAPACITY	14 L
BRAKES (F)	Single 310 mm petal disc
BRAKES (R)	Single 220 mm petal disc
TYRE (F)	110/70 R17 M/C (54H)
TYRE (R)	150/60 R17 M/C (66H)

Model Code: ER400F

 **Kawasaki**

TOURING

VERSYS 1000 S

*Optional Accessories - Top box and Panniers can be fitted together.



Emerald Blazed Green with Metallic Diablo Black GN2

TAKE ON ANY ROAD, ANY TIME.

Kawasaki's Versys 1000 S is designed to offer maximum riding enjoyment across a wide variety of street riding situations. The relaxed, upright riding position offers a high level of machine control, and is complemented by a highly comfortable seat and good wind protection, making it easy to spend a long time in the saddle.

ASSIST AND SLIPPER CLUTCH
KTRC (KAWASAKI TRACTION CONTROL)
INTEGRATED RIDING MODES
KAWASAKI QUICK SHIFTER UP & DOWN
ELECTRONIC CRUISE CONTROL
SMARTPHONE CONNECTIVITY

ENGINE TYPE	4-stroke, inline 4 cylinder
--------------------	-----------------------------

DISPLACEMENT	1,043 cm ³
---------------------	-----------------------

POWER / TORQUE	88.2 kW / 102.0 N.m
-----------------------	---------------------

TRANSMISSION	6-speed
---------------------	---------

CURB MASS	255 kg*
------------------	---------

SEAT HEIGHT	840 mm
--------------------	--------

L x W x H	2,270 x 950 x 1,490 mm
------------------	------------------------

FUEL CAPACITY	21 L
----------------------	------

BRAKES (F)	Dual 310 mm Petal Discs
-------------------	-------------------------

BRAKES (R)	Single 250 mm Petal Disc
-------------------	--------------------------

TYRE (F)	120/70 ZR17 M/C (58W)
-----------------	-----------------------

TYRE (R)	180/55 ZR17 M/C (73W)
-----------------	-----------------------

Model Code: KLZ1000E

 **Kawasaki**

TOURING

VERSYS® 650

LAMS APPROVED



Metallic Smoke Gold with Metallic Flat Spark Black GN2

VERSATILITY IS THE FOUNDATION OF THE VERSYS

Strong Versys family looks come by way of the styling that is inspired by the Versys 1000. Highlighted by LED lighting, the modern, flowing design beckons invitingly, calling the rider to hit the open road for another adventure. The Versys 650 is equipped with traction Control and a TFT colour screen.

- TFT COLOUR SCREEN
- SMART PHONE CONNECTIVITY
- ADJUSTABLE WINDSHIELD
- ALL LED LIGHTING
- TRACTION CONTROL (KTRC)
- LARGE VOLUME FUEL TANK

ENGINE TYPE	4-Stroke parallel Twin
DISPLACEMENT	649 cm ³
POWER / TORQUE	41.3 kW / 56.0 N.m
TRANSMISSION	6-speed
CURB MASS	218 kg*
SEAT HEIGHT	845 mm

L x W x H	2,165 x 840 x 1,360 mm
FUEL CAPACITY	21 L
BRAKES (F)	Dual 300 mm petal discs
BRAKES (R)	Single 250 mm petal disc
TYRE (F)	120/70 ZR17 M/C (58W)
TYRE (R)	160/60 ZR17 M/C (69W)

Model Code: KLE650H



TOURING

VERSYS-X 300

LAMS APPROVED



Pearl Matte Sage Green with Metallic Matte Carbon Gray GN2

YOUR TICKET TO ADVENTURE

Kawasaki Versys-X 300 is a nimble-handling lightweight adventure motorcycle that is ready to take on any size adventure. Whether you're commuting or touring, the Versys-X 300 is a willing companion. With a lightweight chassis and long-travel suspension, the possibilities are endless.

- LONG-TRAVEL SUSPENSION
- UPRIGHT RIDING POSITION
- LOW SEAT HEIGHT
- CONVENIENT REAR CARRIER
- ASSIST AND SLIPPER CLUTCH
- ECONOMICAL RIDING INDICATOR

ENGINE TYPE	4-Stroke, Parallel twin
--------------------	-------------------------

DISPLACEMENT	296 cm ³
---------------------	---------------------

POWER / TORQUE	29.3 kW / 25.7 N.m
-----------------------	--------------------

TRANSMISSION	6-speed
---------------------	---------

CURB MASS	175 kg*
------------------	---------

SEAT HEIGHT	815 mm
--------------------	--------

L x W x H	2,170 x 860 x 1,390 mm
------------------	------------------------

FUEL CAPACITY	17 L
----------------------	------

BRAKES (F)	Single 290 mm petal disc
-------------------	--------------------------

BRAKES (R)	Single 220 mm petal disc
-------------------	--------------------------

TYRE (F)	100/90-19 M/C (57S)
-----------------	---------------------

TYRE (R)	130/80-17 M/C (65S)
-----------------	---------------------

Model Code: KLE300C

Kawasaki

CRUISER

Vulcan S CAFE

LAMS APPROVED

Kawasaki
LEARNER
APPROVED



Pearl Storm Gray with Ebony GY1

SPORTBIKE PERFORMANCE MEETS CRUISER STYLE

Unlike any other, the Vulcan S Cafe is designed to transport riders into a sporty realm in edgy style. Blending an aggressive ride with a vintage styling and a powerful 649cc engine, this bike kicks any experience into high gear. Whether you're commuting to work or enjoying a day trip, the Vulcan S adds confidence-inspiring performance to every ride.

SPORTBIKE-DERIVED CHASSIS & SUSPENSION
DARK-TINTED WINDSHIELD DEFLECTOR
ADJUSTABLE RIDING POSITIONS
SPORTY HANDLING
LOW SINGLE SEAT

ENGINE TYPE	Liquid-cooled parallel twin
DISPLACEMENT	649 cm ³
POWER / TORQUE	35.0 kW / 53.0 N.m
TRANSMISSION	6-speed
CURB MASS	229 kg*
SEAT HEIGHT	705 mm

L x W x H	2,310 x 880 x 1,130 mm
FUEL CAPACITY	14 L
BRAKES (F)	Single 300 mm disc
BRAKES (R)	Single 250 mm disc
TYRE (F)	120/70 R18 M/C (59H)
TYRE (R)	160/60 R17 M/C (69H)

Model Code: EN650E

 **Kawasaki**

CRUISER

Vulcan S

LAMS APPROVED

Kawasaki
LEARNER
APPROVED



Metallic Flat Spark Black BK1

Metallic Matte Carbon Gray with Ebony GY1

STYLISH, URBAN MOTORCYCLE FOR ALL RIDERS

The Vulcan S is not your average cruiser. It stands apart, with its Parallel Twin engine, unique frame and suspension layout, and its very non-traditional looks. Accessible in all senses of the word, with the Vulcan S riders can come as they are, and just get on and go.

- LOW SEAT HEIGHT
- LIGHT HANDLING
- NUMEROUS ACCESSORIES
- FRONT AND REAR ABS
- 18" FRONT AND 17" REAR WHEELS

ENGINE TYPE	Liquid-cooled parallel twin
DISPLACEMENT	649 cm ³
POWER / TORQUE	35.0 kW / 53.0 N.m
TRANSMISSION	6-speed
CURB MASS	226 kg*
SEAT HEIGHT	705 mm

L x W x H	2,310 x 880 x 1,100 mm
FUEL CAPACITY	14 L
BRAKES (F)	Single 300 mm disc
BRAKES (R)	Single 250 mm disc
TYRE (F)	120/70 R18 M/C (59H)
TYRE (R)	160/60 R17 M/C (69H)

Model Code: EN650D

 **Kawasaki**

CRUISER

Vulcan S

FULL POWER



Metallic Flat Spark Black BK1

SPORTBIKE PERFORMANCE MEETS CRUISER STYLE

The Vulcan S is not your average cruiser. It stands apart, with its Parallel Twin engine, unique frame and suspension layout, and its very non-traditional looks. Accessible in all senses of the word, with the Vulcan S riders can come as they are, and just get on and go.

LOW SEAT HEIGHT

LIGHT HANDLING

NUMEROUS ACCESSORIES

FRONT AND REAR ABS

18" FRONT AND 17" REAR WHEELS

ENGINE TYPE	Liquid-cooled parallel twin
DISPLACEMENT	649 cm ³
POWER / TORQUE	45.0 kW / 63.0 N.m
TRANSMISSION	6-speed
CURB MASS	226 kg*
SEAT HEIGHT	705 mm

L x W x H	2,310 x 880 x 1,100 mm
FUEL CAPACITY	14 L
BRAKES (F)	Single 300 mm disc
BRAKES (R)	Single 250 mm disc
TYRE (F)	120/70 R18 M/C (59H)
TYRE (R)	160/60 R17 M/C (69H)

Model Code: EN650D

 **Kawasaki**

RETRO STYLE

W800 STREET



Pearl Storm Gray GY1

THE ORIGINAL ICON

The 1960s spirit runs deep in the Kawasaki W retro-classic lineup with class-leading authentic styling, sound and feel. A true throwback to the iconic W1, modern W800 motorcycles are meticulously crafted to pay homage to the past, all while thoughtfully incorporating modern technology and features.

ASSIST & SLIPPER CLUTCH
TRADITIONAL EXHAUST SYSTEM
CHROME-PLATED STEEL FENDERS
LARGE ROUND TURN SIGNALS
LARGE 19" FRONT AND 18" REAR WHEELS
SILVER ALUMITE RIMS

ENGINE TYPE	Air Cooled Vertical Twin 4-Stroke
--------------------	-----------------------------------

DISPLACEMENT	773 cm ³
---------------------	---------------------

POWER / TORQUE	35.0 kW / 62.9 N.m
-----------------------	--------------------

TRANSMISSION	5-speed
---------------------	---------

CURB MASS	221 kg*
------------------	---------

SEAT HEIGHT	770 mm
--------------------	--------

L x W x H	2,135 x 925 x 1,120 mm
------------------	------------------------

FUEL CAPACITY	15 L
----------------------	------

BRAKES (F)	Single 320 mm Disc
-------------------	--------------------

BRAKES (R)	Single 270 mm Disc
-------------------	--------------------

TYRE (F)	100/90-18 M/C (56H)
-----------------	---------------------

TYRE (R)	130/80-18 M/C (66H)
-----------------	---------------------

Model Code: EJ800B

 **Kawasaki**

DUAL PURPOSE

KLR650

LAMS APPROVED

Kawasaki
LEARNER
APPROVED



KLR650
Candy Lime Green Type 3 GN1
Model Code: KL650F

KLR650 Adventure Cypher Camo Gray (Matte) GY2 | Model Code: KL650H

OFF ROAD TOURING

Go-farther (further) adventure partner now tougher, More reliable, More comfortable. While retaining the highly-acclaimed reliability of its predecessor, the new KLR650 elevates its touring potential to the next level. Frame revisions improve handling character, rubber mounts add to rider comfort matched with increased comfort and greater carrying capacity facilitate long-distance touring or short distance errands.

LARGE FRONT DISC WITH ABS

FUEL INJECTED

LED HEADLIGHT

EXCLUSIVE PANNIER & TOP CASE ACCESSORIES

MAINTENANCE FREE BATTERY

23 LITRE FUEL TANK

ENGINE TYPE	Liquid-cooled, 4-stroke Single
DISPLACEMENT	652 cm ³
POWER / TORQUE	28.5 kW / 51.5 N.m
TRANSMISSION	5-speed
CURB MASS	210 kg* (KLR650) 222 kg* (KLR650 Adventure)
SEAT HEIGHT	870 mm

L x W x H	2,280 x 970 x 1,465 mm (KLR650) 2,280 x 970 x 1,455 mm (KLR650 Adventure)
FUEL CAPACITY	23 L
BRAKES (F)	Single 300 mm Disc
BRAKES (R)	Single 240 mm Disc
TYRE (F)	90/90-21 M/C (54S)
TYRE (R)	130/80-17 M/C (65S)

 **Kawasaki**

DUAL PURPOSE

KLR 650 S

LAMS APPROVED

Kawasaki
LEARNER
APPROVED



Pearl Storm Gray GY1

OFF ROAD TOURING

The KLR650, a reliable, versatile adventure tourer with a larger tank for long-distance rides, the KLR650 S, a low-down variation of the KLR650, was developed to offer rider enjoyment to a wider range of users.

LOW-DOWN FRONT AND REAR SUSPENSION
SEAT REDUCED BY 35mm COMPARED TO KLR650
OPTIMISED SIDE STAND FOR LOW-DOWN STYLING
SHIFTER AND FOOT PEG GAP INCREASED FOR EASE OF FREEDOM AROUND SHIFTER
LED HEADLIGHT

ENGINE TYPE	Liquid-cooled, 4-stroke Single
DISPLACEMENT	652 cm ³
POWER / TORQUE	28.5 kW / 51.5 N.m
TRANSMISSION	5-speed
CURB MASS	210 kg*
SEAT HEIGHT	815 mm

L x W x H	2,255 x 970 x 1,465 mm
FUEL CAPACITY	23 L
BRAKES (F)	Single 300 mm Disc
BRAKES (R)	Single 240 mm Disc
TYRE (F)	90/90-21 M/C (54S)
TYRE (R)	130/80-17 M/C (65S)

Model Code: KL650K

 **Kawasaki**

MOTARD

KLX 230SM

**Kawasaki
LEARNER
APPROVED**



Lime Green GN1

Ebony BK1

LIGHTWEIGHT SUPERMOTO

Turn up the fun on the streets with this supermoto. Every trip is an experience when you ride through the city sporting a quick-revving engine and nimble handling. Be quick to steal the scene with equal parts performance and attitude.

LONG TRAVEL SUSPENSION

17" FRONT AND REAR WHEELS

BRIGHT LED HEADLIGHT

ABS

ROAD TYRES

SUPERMOTO STYLING

ENGINE TYPE	Air-cooled, 4-stroke Single
DISPLACEMENT	233 cm ³
POWER / TORQUE	14.0 kW / 19.8 N.m
TRANSMISSION	6-speed, return
CURB MASS	135 kg*
SEAT HEIGHT	845 mm

L x W x H	2,050 x 835 x 1,120mm
FUEL CAPACITY	7.5 L
BRAKES (F)	Single 300 mm Petal Disc
BRAKES (R)	Single 220 mm Petal Disc
TYRE (F)	110/70-17 M/C (54P)
TYRE (R)	120/70-17 M/C (58P)

Model Code: KLX230R

 **Kawasaki**



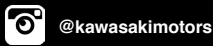
2023 MOTORCYCLE RANGE



FOR FULL SPECIFICATIONS PLUS THE LATEST KAWASAKI MOTORCYCLES, NEWS AND DEALER INFORMATION GO TO WWW.KAWASAKI.COM.AU

*Curb mass includes full tank of fuel and all liquids at optimum levels. All information was correct at the time of printing. Some specifications may be subject to change. Refer to website www.kawasaki.com.au for further information. Kawasaki accepts no responsibility for unavailability of stock or changes to specifications. Some photography depicts international models. Some models featured may be fitted with options or accessories. Colours, graphics and features may vary slightly from those shown. Photographs depict professional riders under controlled conditions. Kawasaki Motors Pty Ltd endorses safe riding. Always wear an approved helmet and protective riding clothing. Never ride a motorcycle under the influence of alcohol or drugs.

JOIN KAWASAKI TEAM GREEN AUSTRALIA AT: WWW.KAWASAKI.COM.AU/EN-AU/TEAMGREEN



Kawasaki
Motors Finance

Kawasaki
Insurances

Kawasaki
GENUINE ACCESSORIES





Kawasaki

2023 OFF-ROAD RANGE

KX

KXL

KXF

ELEKTRODE





Kawasaki



KX 450

MOTOCROSS

KX450



THE BIKE THAT BUILDS CHAMPIONS

The KX450's engine has always been a strength. With great power complementing a host of features proven to give you an advantage on the race track. Matched with Launch Control, electric start and engine mapping plugs. The Winner's Edge.

**HARD-HITTING FUEL INJECTED
HYDRAULIC CLUTCH
SHOWA A-KIT TECHNOLOGY SUSPENSION
FINGER FOLLOWER VALVES
ELECTRIC START
LAUNCH CONTROL**

ENGINE TYPE	Liquid-cooled, 4-stroke Single
DISPLACEMENT	449 cc
BORE x STROKE	96.0 x 62.1 mm
TRANSMISSION	5-speed, return
CURB MASS	110.4 kg
SEAT HEIGHT	955 mm
L X W X H	2,185 x 820 x 1,265 mm
FUEL CAPACITY	6.2 L
BRAKES (F)	Semi-floating ø270 mm disc
BRAKES (R)	Single ø250 mm petal disc
TYRE (F)	80/100-21 51M
TYRE (R)	120/80-19 63M



KX250



Kawasaki

MOTOCROSS

KX 250



BE NEXT

Strongest 4-stroke 250 on the race track. The KX250's engine has long been one of its greatest strengths. Benefitting from finger-follower valve actuation like the KX450, plus dual injectors, downdraft-style intake, and race-inspired performance. Electric start and a hydraulic clutch complete the package.

ELECTRIC START

HYDRAULIC CLUTCH

RACE-READY SUSPENSION

LIGHTWEIGHT ALUMINIUM FRAME

SETTING ADJUSTABLE MOTOCROSS ECU

LAUNCH CONTROL MODE

ENGINE TYPE	Liquid-cooled, 4-stroke Single
--------------------	--------------------------------

DISPLACEMENT	249 cc
---------------------	--------

BORE x STROKE	78.0 x 52.2 mm
----------------------	----------------

TRANSMISSION	5-speed, return
---------------------	-----------------

CURB MASS	108 kg
------------------	--------

SEAT HEIGHT	960 mm
--------------------	--------

L X W X H	2,190 x 820 x 1,270 mm
------------------	------------------------

FUEL CAPACITY	6.2 L
----------------------	-------

BRAKES (F)	Semi-floating ø270 mm disc
-------------------	----------------------------

BRAKES (R)	Single ø240 mm petal disc
-------------------	---------------------------

TYRE (F)	80/100-21 51M
-----------------	---------------

TYRE (R)	110/90-19 62M
-----------------	---------------

Model Colour: Lime Green | Model Code: KX252C

 **Kawasaki**

MOTOCROSS

KX85 L

KX85



KX85
(SMALL WHEEL)
Model Code: KX85C



KX85 L
(LARGE WHEEL)
Model Code: KX85D

BUILT FOR JUNIOR CHAMPIONS

The KX85 & KX85 L motorcycles bring proven performance to the junior ranks. Proportionate power of the 2-stroke 84cc engine provides a platform for junior racers to sharpen their skills. Two models to choose from will ensure the right fit based on age, height and racing class.

FACTORY-INSPIRED STYLING

DUNLOP MX33 TYRES

ADJUSTABLE SUSPENSION

6-POSITION ADJUSTABLE HANDLEBAR

STRONG TRANSMISSION

SLIM ERGONOMICS

ENGINE TYPE	Liquid-cooled, 2-stroke Single
DISPLACEMENT	84 cc
BORE x STROKE	48.5 x 45.8 mm
TRANSMISSION	6-speed
CURB MASS	77 kg (KX85 L) / 74.6 kg (KX85)
SEAT HEIGHT	870 mm (KX85 L) 830 mm (KX85)

L X W X H	1,920 x 765 x 1,150 mm (KX85 L) 1,830 x 765 x 1,100 mm (KX85)
FUEL CAPACITY	5.0 L
BRAKES (F)	Single ø220 mm petal disc
BRAKES (R)	Single ø184 mm petal disc
TYRE (F)	70/100-19 42M (KX85 L) 70/100-17 40M (KX85)
TYRE (R)	90/100-16 51M (KX85 L) 90/100-14 49M (KX85)

Model Colour: Lime Green

 **Kawasaki**

MOTOCROSS

KX65



CHAMPION BUILDING KX

KX65 motorcycles are the ideal dirt bikes for introducing young racers to the competitive ranks of motocross. With a 64 cc engine, durable chassis and proven agility to turn lap after lap, the KX65 allows riders to gain experience and build skills on a dependable platform.

6-SPEED TRANSMISSION

ADJUSTABLE Ø33 mm LEADING AXLE
CONVENTIONAL FORK

ADJUSTABLE UNI-TRACK REAR SUSPENSION
FRONT AND REAR DISC BRAKES

STEEL SEMI-DOUBLE CRADLE FRAME

SEAT HEIGHT ADJUSTMENT (ACCESSORY REQUIRED)

ENGINE TYPE	Liquid-cooled, 2-stroke Single
--------------------	--------------------------------

DISPLACEMENT	64 cc
---------------------	-------

BORE x STROKE	44.5 x 41.6 mm
----------------------	----------------

TRANSMISSION	6-speed, return
---------------------	-----------------

CURB MASS	60 kg
------------------	-------

SEAT HEIGHT	760 mm
--------------------	--------

L X W X H	1,590 x 760 x 955 mm
------------------	----------------------

FUEL CAPACITY	3.8 L
----------------------	-------

BRAKES (F)	Single ø180 mm disc
-------------------	---------------------

BRAKES (R)	Single ø180 mm disc
-------------------	---------------------

TYRE (F)	60/100-14 30M
-----------------	---------------

TYRE (R)	80/100-12 41M
-----------------	---------------

Model Colour: Lime Green | Model Code: KX65C

 **Kawasaki**



KX 450X



Kawasaki

CROSS-COUNTRY

KX 450 X



GET THE OFF-ROAD EDGE

Cross Country-specific tuning for the engine, suspension and brakes, complemented by a 21"/18" wheel combination fitted with enduro-type tyres, and convenient standard features like a side stand and skid plate make the KX450X attractive for cross-country competitors.

ELECTRIC START
HYDRAULIC CLUTCH
FINGER-FOLLOWER VALVE ACTUATION
SLIM ALUMINIUM FRAME
ADJUSTABLE ERGONOMICS
21" FRONT / 18" REAR TYRES

ENGINE TYPE	Liquid-cooled, 4-stroke Single
--------------------	--------------------------------

DISPLACEMENT	449 cc
---------------------	--------

BORE x STROKE	96.0 x 62.1 mm
----------------------	----------------

TRANSMISSION	5-speed, return
---------------------	-----------------

CURB MASS	111.6 kg
------------------	----------

SEAT HEIGHT	950 mm
--------------------	--------

L X W X H	2,185 x 820 x 1,265 mm
------------------	------------------------

FUEL CAPACITY	6.2 L
----------------------	-------

BRAKES (F)	Semi-floating ø270 mm disc
-------------------	----------------------------

BRAKES (R)	Single ø240 mm petal disc
-------------------	---------------------------

TYRE (F)	80/100-21 51M
-----------------	---------------

TYRE (R)	120/90-18 65M
-----------------	---------------

Model Colour: Lime Green | Model Code: KX450K

 **Kawasaki**

CROSS-COUNTRY

KX250X



GET THE OFF-ROAD EDGE

Championship-proven technology of KX race machines has been tuned for off-road competition. Purposely designed to take on tough off-road conditions, the KX250X motorcycle delivers the edge to ride ahead. No matter how technical the terrain, lead with confidence on the KX250X.

ELECTRIC START
HYDRAULIC CLUTCH
LAUNCH CONTROL
POWERFUL BRAKES
SLIM, ERGONOMIC BODYWORK
FINGER-FOLLOWER VALVE ACTUATION

ENGINE TYPE	Liquid-cooled, 4-stroke Single
--------------------	--------------------------------

DISPLACEMENT	249 cc
---------------------	--------

BORE x STROKE	78.0 x 52.2 mm
----------------------	----------------

TRANSMISSION	5-speed, return
---------------------	-----------------

CURB MASS	109.2 kg
------------------	----------

SEAT HEIGHT	945 mm
--------------------	--------

L X W X H	2,170 x 820 x 1,260 mm
------------------	------------------------

FUEL CAPACITY	6.2 L
----------------------	-------

BRAKES (F)	Semi-floating ø270 mm disc
-------------------	----------------------------

BRAKES (R)	Single ø240 mm petal disc
-------------------	---------------------------

TYRE (F)	80/100-21 51M
-----------------	---------------

TYRE (R)	110/100-18 64M
-----------------	----------------

Model Colour: Lime Green | Model Code: KX252D

 **Kawasaki**

ENDURO

KLX450R



Shown in race trim (non-registered)

OFF-ROAD RACER

The KLX450R gets its key components straight out of our mighty KX450 motocrosser and adapts them for off-road racing. The KX450's high-powered, lightweight 4-stroke engine has been tweaked for more low-end torque and is mated to a special wide-ratio 5-speed transmission – and of course comes with an electric starter.

ELECTRIC AND KICK START
LIGHT-HANDLING CHASSIS
ROAD-REGISTERABLE ENDURO
OFF-ROAD TUNED SUSPENSION
EXCELLENT LOW-MID RANGE TORQUE
REONSIVE THROTTLE CONTROL

ENGINE TYPE	Liquid-cooled, 4-stroke Single
--------------------	--------------------------------

DISPLACEMENT	449 cc
---------------------	--------

BORE x STROKE	96.0 x 62.1 mm
----------------------	----------------

TRANSMISSION	5-speed, return
---------------------	-----------------

CURB MASS	126 kg
------------------	--------

SEAT HEIGHT	935 mm
--------------------	--------

L X W X H	2,175 x 820 x 1,250 mm
------------------	------------------------

FUEL CAPACITY	8.0 L
----------------------	-------

BRAKES (F)	Semi-floating ø250 mm disc
-------------------	----------------------------

BRAKES (R)	Single ø240 mm petal disc
-------------------	---------------------------

TYRE (F)	80/100-21M/C 51P
-----------------	------------------

TYRE (R)	120/90-18M/C 65P
-----------------	------------------

Model Colour: Lime Green | Model Code: KLX450A

 **Kawasaki**

ENDURO

KLX300R



GET OUT AND PLAY

The KLX300R is the ultimate trail bike for off-road thrills. Bridging the world between a weekend play bike and a race bike. The KLX300R combines the best of both engine and chassis performance to create the ultimate lightweight, fun off-road machine.

LIGHTWEIGHT PERIMETER FRAME

ELECTRIC START

LARGE DIAMETER 21"/18" WHEELS

POWERFUL FUEL-INJECTED ENGINE

4-WAY ADJUSTABLE HANDLEBAR

TRAIL-TUNED SUSPENSION

ENGINE TYPE	Liquid-cooled, 4-stroke Single
--------------------	--------------------------------

DISPLACEMENT	292 cc
---------------------	--------

BORE X STROKE	78.0 x 61.2 mm
----------------------	----------------

TRANSMISSION	6-speed
---------------------	---------

CURB MASS	128 kg
------------------	--------

SEAT HEIGHT	900 mm
--------------------	--------

L X W X H	2,120 x 825 x 1,245 mm
------------------	------------------------

FUEL CAPACITY	7.9 L
----------------------	-------

BRAKES (F)	Single ø270 mm petal disc
-------------------	---------------------------

BRAKES (R)	Single ø240 mm petal disc
-------------------	---------------------------

TYRE (F)	80/100-21 51M
-----------------	---------------

TYRE (R)	100/100-18 59M
-----------------	----------------

Model Colour: Lime Green | Model Code: KLX300C

 **Kawasaki**

DUAL PURPOSE

KLX 250

Kawasaki
LEARNER
APPROVED



DUAL PURPOSE MACHINE

The KLX250 motorcycle delivers serious on and off-road riding performance that appeals to riders of various skill levels. This dual-purpose motorcycle boasts a 249cc engine and provides a superior ride for confidently navigating through city streets or off-road trails.

ROAD-REGISTERABLE
LEARNER APPROVED
ADJUSTABLE FRONT & REAR SUSPENSION
CARBURETTOR FUEL DELIVERY
ALL DIGITAL INSTRUMENTATION
SINGLE-SEAT MODEL

ENGINE TYPE	Liquid-cooled, 4-stroke Single
DISPLACEMENT	249 cc
POWER / TORQUE	11.0 kW {15 PS} 8000 rpm 17.0 N.m {1.7 kgfm} @ 3000 rpm
TRANSMISSION	6-speed
CURB MASS	134 kg
SEAT HEIGHT	890 mm

L X W X H	2,200 x 820 x 1,205 mm
FUEL CAPACITY	7.7 L
BRAKES (F)	Single ø250 mm disc
BRAKES (R)	Single ø240 mm disc
TYRE (F)	3.00-21 51P
TYRE (R)	4.60-18 63p

Model Colour: Lime Green | Model Code: KLX250T

 **Kawasaki**

ENDURO

KLX230R S



GET OUT AND PLAY

Take trail riding to the next level on the KLX230R S. The long-travel suspension, ample ground clearance and full size trail wheels are purpose built to play in the dirt. The KLX230R S is for off-road use only (non-registerable).

ELECTRIC START

TRAIL TUNED LONG-TRAVEL SUSPENSION

21"FRONT /18" REAR TYRES

300MM GROUND CLEARANCE

FUEL INJECTED 4-STROKE

900mm SEAT HEIGHT

ENGINE TYPE	Air-cooled, 4-stroke Single
--------------------	-----------------------------

DISPLACEMENT	233 cc
---------------------	--------

POWER / TORQUE	14.6 kW @ 8000 rpm 20.6 N.m @ 6000 rpm
-----------------------	---

TRANSMISSION	6-speed
---------------------	---------

CURB MASS	115 kg
------------------	--------

SEAT HEIGHT	900 mm
--------------------	--------

L X W X H	2,035 x 840 x 1,175 mm
------------------	------------------------

FUEL CAPACITY	6.6 L
----------------------	-------

BRAKES (F)	Single ø240 mm disc
-------------------	---------------------

BRAKES (R)	Single ø220 mm disc
-------------------	---------------------

TYRE (F)	80/100-21 51M
-----------------	---------------

TYRE (R)	100/100-18 59M
-----------------	----------------

Model Colour: Lime Green | Model Code: KLX230F

 **Kawasaki**

DUAL PURPOSE

KLX230S



Battle Grey GY1



Lime Green GN1

GET OUT AND PLAY

The KLX230 S is Purpose-built for trails and tuned for on-road riding, the motorcycle can take you to new adventures with dual-sport capability. The 233cc, air-cooled, 4-stroke single cylinder engine delivers low to mid-range power for a range of riding. The NEW LED headlight and UPDATED ABS, that can be disabled for off-road control, add to the versatility of the KLX230 S.

DUAL PURPOSE ABS

POWERFUL, LIGHT, NIMBLE

LARGE 21"/18" WHEELS

233cm³ FUEL-INJECTED ENGINE

ROAD-REGISTERABLE - LEARNER APPROVED

ELECTRIC START

ENGINE TYPE	Air-cooled, 4-stroke Single
DISPLACEMENT	233 cc
POWER / TORQUE	14.0 kW @ 7600 rpm 19.8 N.m @ 6100 rpm
TRANSMISSION	6-speed
CURB MASS	135 kg
SEAT HEIGHT	885 mm

L X W X H	2,080 x 835 x 1,110 mm
FUEL CAPACITY	7.5 L
BRAKES (F)	Single ø265mm disc with ABS
BRAKES (R)	Single ø220mm disc with ABS
TYRE (F)	2.75-21 45P
TYRE (R)	4.10-18 59P

Model Colour: Lime Green | Model Code: KLX230L

 **Kawasaki**

DUAL PURPOSE

KLX 150BF

Kawasaki
LEARNER
APPROVED



SINGLE
SEAT
REGO

FOR THE URBAN JUNGLE

Dual purpose motorcycle with off-road capability. Simple, yet reliable air-cooled single cylinder engine, mounted on large wheels. Sharp styling further adds to pride in ownership. Easy riding on the road or blasting through the trails. Learner approved.

LEARNER APPROVED, ROAD-REGISTERABLE
ELECTRIC AND KICK START
EASY TO READ INSTRUMENTATION
ADJUSTABLE REAR SHOCK
COMPACT LIGHTWEIGHT CHASSIS
21" / 18" LARGE WHEELS

ENGINE TYPE	Air-cooled, 4-stroke Single
DISPLACEMENT	144 cc
POWER / TORQUE	8.6 kW @ 8000 rpm 11.3 N.m @ 6500 rpm
TRANSMISSION	5-speed
CURB MASS	117 kg
SEAT HEIGHT	870 mm

L X W X H	2,070 x 950 x 1,155 mm
FUEL CAPACITY	6.9 L
BRAKES (F)	Single ø240 mm petal disc
BRAKES (R)	Single ø190 mm petal disc
TYRE (F)	2.75-21 45P
TYRE (R)	4.10-18 59P

Model Colour: Lime Green | Model Code: KLX150F

 **Kawasaki**

FUN BIKES

KLX140RL

KLX140R



KLX 140R
(SMALL WHEEL)
Model Code: KLX140A



KLX 140R L
(LARGE WHEEL)
Model Code: KLX140B

MAXIMUM FUN FACTOR

Electric start and confident handling, the KLX140R and KLX140R L are the ideal size motorcycles for growing youth. The KLX140 range are easy to ride with plush suspension and a strong 144 cc engine providing hassle free fun.

PUSH BUTTON ELECTRIC START

19"/16" WHEELS (KLX140R L)

TELESCOPIC FRONT FORK

RK EXCEL RIMS

ADJUSTABLE REAR SHOCK

SHARP AND AGGRESSIVE STYLING

ENGINE TYPE	Air-cooled, 4-stroke Single
DISPLACEMENT	144 cc
BORE x STROKE	58.0 x 54.4 mm
TRANSMISSION	5-speed
CURB MASS	93kg (KLX140R) / 95kg (KLX140R L)
SEAT HEIGHT	780 mm (KLX140R) 800 mm (KLX140R L)

L X W X H	1,820 x 790 x 1,050 mm (KLX140R) 1,895 x 790 x 1,075 mm (KLX140R L)
FUEL CAPACITY	5.8 L
BRAKES (F)	Single ø220mm petal disc
BRAKES (R)	Single ø186mm petal disc
TYRE (F)	70/100-17 (KLX140R) 70/100-19 (KLX140R L)
TYRE (R)	90/100-14 (KLX140R) 90/100-16 (KLX140R L)

Model Colour: Lime Green

 **Kawasaki**

FUN BIKES

KLX110R

KLX110R L



KLX 110R L
(LONG TRAVEL SUSPENSION)
Model Code: KLX110D



KLX 110R
(AUTO CLUTCH)
Model Code: KLX110C



MINI-MOTO MANIA

Fun bikes for youngsters and mini-moto enthusiasts. The KLX110R is packed with easy to learn features; automatic clutch, electric start, parental controls. The KLX110R L changes to manual clutch, long travel suspension and taller ride height.

- ADJUSTABLE THROTTLE LIMITER
- 4 SPEED TRANSMISSION
- ELECTRIC STARTING
- HIGH-TENSILE STEEL BACKBONE FRAME
- LONG STROKE SUSPENSION (KLX110R L)
- CENTRIFUGAL CLUTCH (KLX110R)

ENGINE TYPE	Air-cooled, 4-stroke Single
DISPLACEMENT	112 cc
BORE x STROKE	53.0 x 50.6 mm
TRANSMISSION	4-speed, auto clutch (KLX110R) 4-speed, manual clutch (KLX110R L)
CURB MASS	76 kg
SEAT HEIGHT	680 mm (KLX110R) 730 mm (KLX110R L)

L X W X H	1,560 x 650 x 955 mm (KLX110R) 1,560 x 650 x 990 mm (KLX110R L)
FUEL CAPACITY	3.8 L
BRAKES (F)	ø90 mm drum
BRAKES (R)	ø110 mm drum
TYRE (F)	2.50-14 4PR
TYRE (R)	3.00-12 4PR

Model Colour: Lime Green

 **Kawasaki**

FUN ATV

KFX 50

KFX 90



KFX 90
Model Code: KSF90B



KFX 50
Model Code: KSF50C



KIDS 4 WHEEL FUN

These entry level fun ATV's are equipped with electric starting, single shock swing arm and twin front drum brakes. Parents can control usage with the keyed ignition and built in throttle limiter. KFX50 aged 6 years and up, KFX90 for 12+.

- KEYED ELECTRIC START
- ADJUSTABLE THROTTLE LIMITER
- CVT AUTOMATIC TRANSMISSION
- AMPLE GROUND CLEARANCE
- CHAIN GUARD
- FULL FLOOR BOARDS

ENGINE TYPE	Air-cooled, 4-stroke Single
DISPLACEMENT	50 cc (KFX50) / 90 cc (KFX90)
BORE x STROKE	39 x 41.4 mm (KFX50) 47 x 51.8 mm (KFX90)
TRANSMISSION	Automatic CVT (Centrifugal clutch)
CURB MASS	113 kg (KFX50) / 122 kg (KFX90)
SEAT HEIGHT	635 mm (KFX50) 650 mm (KFX90)

L X W X H	1,400 x 865 x 885 mm (KFX50) 1,425 x 905 x 925 mm (KFX90)
FUEL CAPACITY	5.3 L
BRAKES (F)	Mechanical drum
BRAKES (R)	Hydraulic disc
TYRE (F)	AT16 x 8-7 (KFX50) AT18 x 7-8 (KFX90)
TYRE (R)	AT16 x 8-7 (KFX50) AT18 x 9-8 (KFX90)

Model Colour: Super Black

 **Kawasaki**

EV BALANCE BIKE

ELEKTRODE



KIDS 2 WHEEL FUN

A child's first riding experience is a special thing, and Kawasaki's first ever electric vehicle—the Elektrode electric balance bike—is designed to offer just that. It does so in an approachable package for children from 3 to 8 years old, making it the perfect first step in a child's motorcycling journey.

IN-WHEEL ELECTRIC MOTOR
LITHIUM-ION IN-FRAME BATTERY
3-SPEED MODES WITH PARENTAL LOCK
RUGGED ALUMINIUM FRAME
PREMIUM DISC BRAKE
16" WHEELS & TYRES

ENGINE TYPE	Air-cooled, brushless, in-wheel
VOLTAGE/CAPACITY	36 V 5.1 Ah (187.2 Wh)
RUNNING TIME	150+ minutes
CURB MASS	14.5 kg
SEAT HEIGHT	410 - 520 mm

L X W X H	1,235 x 582 x 767mm
BRAKES (R)	ø160 mm mechanical disc
TYRE (F)	16 x 2.125
TYRE (R)	16 x 2.125
MAXIMUM SPEED	Low Mode: 8 km/h High Mode: 21 km/h Mid Mode: 12 km/h

Model Colour: Lime Green | Model Code: KSK030A

 **Kawasaki**



Kawasaki



ELEKTRODE



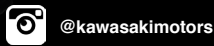
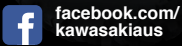
2023 OFF-ROAD RANGE



FOR FULL SPECIFICATIONS PLUS THE LATEST KAWASAKI MOTORCYCLES,
NEWS AND DEALER INFORMATION GO TO WWW.KAWASAKI.COM.AU

*Curb mass includes full tank of fuel and all liquids at optimum levels. All information was correct at the time of printing. Some specifications may be subject to change. Refer to website www.kawasaki.com.au for further information. Kawasaki accepts no responsibility for unavailability of stock or changes to specifications. Some photography depicts international models. Some models featured may be fitted with options or accessories. Colours, graphics and features may vary slightly from those shown. Photographs depict professional riders under controlled conditions. Kawasaki Motors Pty Ltd endorses safe riding. Always wear an approved helmet and protective riding clothing. Never ride a motorcycle under the influence of alcohol or drugs.

JOIN KAWASAKI TEAM GREEN AUSTRALIA AT: WWW.KAWASAKI.COM.AU/KAWASAKI-TEAM-GREEN-AUSTRALIA



Kawasaki

Let the Good Times Roll

2023 AGRICULTURAL RANGE

UTILITY VEHICLES | RUV | AG MOTORBIKES

MULE

TEBYK

KRX

STOCKMAN



Kawasaki



MULE
PRO-FXT



UTILITY VEHICLE

MULE PRO-FXT

PETROL

RANCH EDITION



3 OR 6 SEATING CAPACITY
TRANSFORMABLE SEATING & CARGO TRAY

MOST DEPENDABLE OUTDOOR PARTNER

The New MULE PRO-FXT RANCH EDITION offers an ideal combination of outdoor performance, work capacity, comfort, convenience and a rugged premium appearance, markedly improved comfort means that longer hours can be spent enjoying leisure activities.

- RUGGED FRONT END STYLING**
- QUAD HEADLIGHTS**
- PAINTED GRILL AND BUMPER PLATES**
- CONTOURED FRONT BENCH SEAT**
- SUN TOP AND CAST ALUMINUM WHEELS**
- WARN VRX 45 POWERSPORT WINCH**

ENGINE TYPE	4-Stroke in-line 3-cyl. Petrol
DISPLACEMENT	812 cm ³
BORE x STROKE	72.0 x 66.5 mm
TRANSMISSION	Dual range (high/low) CVT with reverse 2WD/4WD, shaft, Dual-Mode Differential
CURB MASS	894 kg*
LOAD CAPACITY	733 kg (includes occupants & cargo)

L X W X H	3,445 x 1,625 x 2,020 mm
FUEL CAPACITY	30 L (E10 fuel compatible)
TURNING RAD.	4.8 m (differential unlocked)
GROUND CLEAR.	255 mm
TYRE (F)	26 x 9.00R12 4PR
TYRE (R)	26 x 11.00R12 4PR

Model Colour: Metallic Titanium | Model Code: KAT820E

Kawasaki

UTILITY VEHICLE

MULE PRO-FXT

PETROL



3 OR 6 SEATING CAPACITY
TRANSFORMABLE SEATING & CARGO TRAY

POWER TO TRANSFORM

The MULE PRO-FXT is a combination of performance, durability, comfort and convenience. A reliable work and play vehicle. The MULE PRO-FXT seats up to 6 adults and is fitted with a ROPS cab frame for added peace of mind.

- SEAT BELTS (3-POINTS, RETRACTABLE)
- ROLL OVER PROTECTION BAR
- ELECTRIC POWER STEERING
- DC POWER OUTLETS ON THE DASH
- POWERFUL INLINE TRIPLE ENGINE
- ELECTRICALLY SELECTABLE 2WD/4WD

ENGINE TYPE	4-Stroke in-line 3-cyl. petrol
DISPLACEMENT	812 cm ³
BORE x STROKE	72.0 x 66.5 mm
TRANSMISSION	Dual range (high/low) CVT with reverse 2WD/4WD, shaft, Dual-Mode Differential
CURB MASS	867 kg*
LOAD CAPACITY	733 kg (includes occupants & cargo)

L X W X H	3,385 x 1,625 x 1,970 mm
FUEL CAPACITY	30 L (E10 fuel compatible)
TURNING RAD.	4.8 m (differential unlocked)
GROUND CLEAR.	260 mm
TYRE (F)	26 x 9.00R12 4PR
TYRE (R)	26 x 11.00R12 4PR

Model Colour: Timberline Green | Model Code: KAT820B

Kawasaki

UTILITY VEHICLE

MULE PRO-FX

PETROL



LARGEST CARGO BED IN ITS CLASS

The MULE PRO-FX side x side is a powerful, high-capacity, three-passenger vehicle that's as durable as your days are long. With excellent performance for both work and play, it's the perfect work companion with all-day comfort and strong, dependable performance.

- SEAT BELTS (3-POINTS, RETRACTABLE)
- ROLL OVER PROTECTION BAR
- ELECTRIC POWER STEERING
- INLINE TRANSMISSION SHIFT LEVER
- PARKING BRAKE & DIFF. LOCK CONTROLS
- PADDED BENCH SEATS UP TO 3 ADULTS

ENGINE TYPE	4-Stroke in-line 3-cyl. petrol
DISPLACEMENT	812 cm ³
BORE x STROKE	72.0 x 66.5 mm
TRANSMISSION	Dual range (high/low) CVT with reverse 2WD/4WD, shaft, Dual-Mode Differential
CURB MASS	824 kg*
LOAD CAPACITY	733 kg (includes occupants & cargo)

L X W X H	3,385 x 1,625 x 1,965 mm
FUEL CAPACITY	30 L (E10 fuel compatible)
TURNING RAD.	4.8 m (differential unlocked)
GROUND CLEAR.	265 mm
TYRE (F)	26 x 9.00R12 4PR
TYRE (R)	26 x 11.00R12 4PR

Model Colour: Timberline Green | Model Code: KAF820F

Kawasaki

UTILITY VEHICLE

MULE PRO-DXT

DIESEL



3 OR 6 SEATING CAPACITY
TRANSFORMABLE SEATING & CARGO TRAY

THE SERIOUS PEOPLE MOVER

Experience the strength and endless durability of the MULE PRO-DXT. Featuring a Transforming Cab system, allowing for 3 to 6 passengers to travel in comfort. A towing capacity of 907kg combined with steel cargo bed that can carry 453kg. Kawasaki STRONG 3-year Warranty.

PADDED BENCH SEATING (UP TO 6 ADULTS)
SEAT BELTS (3-POINTS, RETRACTABLE)
ROLL OVER PROTECTION BAR
ELECTRIC POWER STEERING
DC POWER OUTLETS ON THE DASH
DIESEL ECONOMY & DURABILITY

ENGINE TYPE 4-Stroke in-line 3-cyl. diesel

DISPLACEMENT 993 cm³

BORE x STROKE 74.0 x 77.0 mm

TRANSMISSION Dual range (high/low) CVT with reverse 2WD/4WD, shaft, Dual-Mode Differential

CURB MASS 871 kg*

LOAD CAPACITY 717 kg (includes occupants & cargo)

L X W X H 3,385 x 1,625 x 1,970 mm

FUEL CAPACITY 30 L

TURNING RAD. 4.8 m (differential unlocked)

GROUND CLEAR. 260 mm

TYRE (F) 26 x 9.00R12 4PR

TYRE (R) 26 x 11.00R12 4PR

Model Colour: Timberline Green | Model Code: KDT1000B

Kawasaki

UTILITY VEHICLE

MULE PRO-DX

DIESEL



DIESEL POWER TO THE PEOPLE

The diesel model is designed primarily for work applications, where the high-torque diesel engine will deliver excellent performance. The MULE PRO-DX features Electric Power Steering, seats up to three adults and is fitted with a ROPS cab frame for added peace of mind.

- SEAT BELTS (3-POINTS, RETRACTABLE)
- 907 KG TOWING CAPACITY
- ELECTRIC POWER STEERING
- INLINE TRANSMISSION SHIFT LEVER
- PARKING BRAKE & DIFF. LOCK CONTROLS
- PADDED BENCH SEATS UP TO 3 ADULTS

ENGINE TYPE	4-Stroke in-line 3-cyl. diesel
DISPLACEMENT	993 cm ³
BORE x STROKE	74.0 x 77.0 mm
TRANSMISSION	Dual range (high/low) CVT with reverse 2WD/4WD, shaft, Dual-Mode Differential
CURB MASS	840 kg*
LOAD CAPACITY	717 kg (includes occupants & cargo)

L X W X H	3,385 x 1,625 x 1,965 mm
FUEL CAPACITY	30 L
TURNING RAD.	4.8 m (differential unlocked)
GROUND CLEAR.	265 mm
TYRE (F)	26 x 9.00R12 4PR
TYRE (R)	26 x 11.00R12 4PR

Model Colour: Timberline Green | Model Code: KDF1000A

Kawasaki

UTILITY VEHICLE

MULE PRO-MX

SPECIAL EDITION

PETROL



DEPENDABLE MIDSIZE OUTDOOR PARTNER

The MULE PRO-MX SE is a new addition to the Australian range. The Special Edition (SE) model has a premium paint finish, cast alloy wheels, factory fitted sunroof and winch. The MULE PRO-MX SE is a capable choice for a farm, country property and or a work site.

SUN ROOF

PREMIUM SPECIAL PAINT

FACTORY INSTALLED WINCH

LED HEADLAMPS

CAST ALUMINIUM WHEELS

SHORT TURNING RADIUS

ENGINE TYPE	Liquid-cooled, Single Cylinder
DISPLACEMENT	695 cm ³
BORE x STROKE	102.0 x 85.0 mm
TRANSMISSION	Dual-range (high/low) CVT with centrifugal clutch & reverse
CURB MASS	736 kg*
LOAD CAPACITY	544 kg (includes occupants & cargo)

L X W X H	2,830 x 1,525 x 1,925 mm
FUEL CAPACITY	36 L
TURNING RAD.	4.2 m (differential unlocked)
GROUND CLEAR.	270 mm
TYRE (F)	25 x 8.00R12 Tubeless
TYRE (R)	25 x 10.00R12 Tubeless

Model Colour: Galaxy Silver | Model Code: KAF700F

Kawasaki

UTILITY VEHICLE

MULE PRO-MX

PETROL



DEPENDABLE MIDSIZE OUTDOOR PARTNER

The MULE PRO-MX comes fitted with a roof and tow hitch receiver, exclusive to the Australian market. The perfect mid-sized work companion. The 2 seater MULE PRO-MX will meet all your daily chores head-on in comfort and with style.

ROOF AND TOW HITCH RECEIVER FITTED
DOUBLE-WISHBONE SUSPENSION
9.1 L OF UNDER HOOD STORAGE SPACE
5.3 L OF UNDER SEAT STORAGE SPACE
317 KG CARGO BED CAPACITY
ELECTRIC POWER STEERING

ENGINE TYPE	Liquid-cooled, Single Cylinder
DISPLACEMENT	695 cm ³
BORE x STROKE	102.0 x 85.0 mm
TRANSMISSION	Dual-range (high/low) CVT with centrifugal clutch & reverse
CURB MASS	728 kg*
LOAD CAPACITY	544 kg (includes occupants & cargo)

L X W X H	2,795 x 1,525 x 1,925 mm
FUEL CAPACITY	36 L
TURNING RAD.	4.2 m (differential unlocked)
GROUND CLEAR.	270 mm
TYRE (F)	25 x 8.00R12 Tubeless
TYRE (R)	25 x 10.00R12 Tubeless

Model Colour: Timberline Green | Model Code: KAF700E

Kawasaki

UTILITY VEHICLE

MULE
SX 4x4 XC

PETROL



COMPACT STRENGTH AND VERSATILITY

The MULE SX 4x4 XC is built tough, has a high level of comfort and all-round versatility. This durable workhorse fits in the bed of a large utility vehicle. The MULE SX 4x4 XC is fitted with a roof and tow hitch.

- FITTED WITH ROOF AND TOW HITCH
- ADJUSTABLE TILT STEERING
- PADDED BENCH SEAT
- COMPACT SIZE & TIGHT TURNING RADIUS
- THICK GRIP STEERING WHEEL
- AMPLE STORAGE UNDER FRONT HOOD

ENGINE TYPE	Air-cooled, Single Cylinder
DISPLACEMENT	401 cm ³
BORE x STROKE	82.0 x 76.0 mm
TRANSMISSION	2-speed automatic CVT, forward/reverse Selectable 2WD/4WD, dual-mode diff.
CURB MASS	491 kg*
LOAD CAPACITY	408 kg (includes occupants & cargo)

L X W X H	2,710 x 1,335 x 1,865 mm
FUEL CAPACITY	16 L
TURNING RAD.	3.6 m
GROUND CLEAR.	190 mm
TYRE (F)	26 x 9.00-12 Tubeless
TYRE (R)	26 x 9.00-12 Tubeless

Model Colour: Timberline Green | Model Code: KAF400X

Kawasaki

UTILITY VEHICLE

MULE SX

PETROL



THE COMPACT MULE

The MULE SX is an easy to drive, side by side that's capable of hard work, especially in tighter environments. The durable 2WD automatic MULE SX fits on the back of a large ute.

- 2WD/DUAL-MODE REAR DIFF WITH DIFF LOCK
- CONTINUOUSLY VARIABLE TRANSMISSION (CVT)
- TIGHT TURNING RADIUS
- 60 L SEALED STORAGE UNDER FRONT HOOD
- STRONG 3-YEAR LIMITED WARRANTY
- HIGH MOUNT AIR INTAKE SYSTEM

ENGINE TYPE	Air-cooled, Single Cylinder
--------------------	-----------------------------

DISPLACEMENT	401 cm ³
---------------------	---------------------

BORE x STROKE	82.0 x 76.0 mm
----------------------	----------------

TRANSMISSION	Automatic CVT, forward/reverse
---------------------	--------------------------------

CURB MASS	439 kg*
------------------	---------

LOAD CAPACITY	415 kg (includes occupants & cargo)
----------------------	-------------------------------------

L X W X H	2,710 x 1,335 x 1,780 mm
------------------	--------------------------

FUEL CAPACITY	16 L
----------------------	------

TURNING RAD.	3.3 m
---------------------	-------

GROUND CLEAR.	155 mm
----------------------	--------

TYRE (F)	22 x 9.00 - 10 Tubeless
-----------------	-------------------------

TYRE (R)	22 x 11.00 - 10 Tubeless
-----------------	--------------------------

Model Colour: Timberline Green | Model Code: KAF400J

Kawasaki

RECREATIONAL UTILITY VEHICLE

TERYX KRX4 1000 *EF*



DOMINATE ADVENTURE

Set your sights on the horizon! With its rugged performance, advanced technology and superb comfort for four, the new TERYX KRX4 1000 is ready to take you and your family on an adventure for the memory books.

4-PASSENGER SEATING

POWERFUL, HIGH TORQUE 999cc PARALLEL-TWIN

LONG-TRAVEL SUSPENSION

HIGHLY RIGID FRAME WITH INTEGRATED ROPS

FULL-COLOUR TFT INSTRUMENTATION

FOX 2.5 LIVE VALVE SHOCKS

ENGINE TYPE	Liquid-cooled Parallel Twin	L X W X H	3,995 x 1,730x 1,935 mm
DISPLACEMENT	999 cm ³	FUEL CAPACITY	40 L
BORE x STROKE	92.0 x 75.1 mm	TURNING RAD.	7.1 m
TRANSMISSION	Dual range (high/low) CVT w/reverse	GROUND CLEAR.	360 mm (STD), 385 mm (max preload)
CURB MASS	955 kg*	TYRE (F)	MAXXIS Carnivore 31 x 10.00R15 8PR
LOAD CAPACITY	454 kg (includes occupants & cargo)	TYRE (R)	MAXXIS Carnivore 31 x 10.00R15 8PR

Model Colour: Metallic Flat Raw Graystone / Candy Steel Furnace Orange | Model Code: KRT1000A

Kawasaki

RECREATIONAL UTILITY VEHICLE

TERYX
KRX
1000



RAISE THE FUN FACTOR

The Teryx KRX 1000 is the master of the bush and rock trails. Boasting the toughness, durability and reliability that TERYX models are renowned for. Powerful, high-torque 999cm³ Parallel Twin engine with CVT transmission and centrifugal clutch.

- 15" BEAD-LOCK WHEELS WITH 31" TYRES
- FOX 2.5 PODIUM LSC SHOCK
- HIGHLY RIGID FRAME WITH INTEGRATED ROPS
- CVT AND CENTRIFUGAL CLUTCH
- FRONT DIFFERENTIAL LOCK
- ON-THE-FLY ELECTRICALLY SELECTABLE 4WD

ENGINE TYPE	Liquid-cooled Parallel Twin
DISPLACEMENT	999 cm ³
BORE x STROKE	92.0 x 75.1 mm
TRANSMISSION	3-position Trans RWD. H/L & Reverse
CURB MASS	860 kg*
LOAD CAPACITY	354 kg (includes occupants & cargo)

L X W X H	3,305 x 1,730 x 1,905 mm
FUEL CAPACITY	40 L
TURNING RAD.	5.9 m
GROUND CLEAR.	360 mm
TYRE (F)	MAXXIS Carnivore 31 x 10.00R15 8PR
TYRE (R)	MAXXIS Carnivore 31 x 10.00R15 8PR

Model Colour: Sunbeam Red with Metallic Onyx Black | Model Code: KRF1000A

Kawasaki

RECREATIONAL UTILITY VEHICLE

TERYX4 S



YOUR WORLD. YOUR ADVENTURE.

V-Twin power & versatility, the Teryx4 S is ready to tackle the toughest obstacles. The 4-seater Teryx4 S is fitted with a plastic roof, high bucket seats and tilt steering for added comfort and convenience.

- POWERFUL V-TWIN ENGINE
- LED HEADLIGHTS
- FOX SPORTS SUSPENSION
- ROLLOVER PROTECTION
- SPEED SENSITIVE ELECTRIC POWER STEERING (EPS)
- STRONG 3-YEAR LIMITED WARRANTY

ENGINE TYPE	4-Stroke V-Twin Petrol, EFI
DISPLACEMENT	783 cm ³
BORE x STROKE	85.0 x 69.0 mm
TRANSMISSION	Dual range CVT with centrifugal clutch, front diff lock and reverse. 2WD/4WD.
CURB MASS	743 kg*
LOAD CAPACITY	499 kg (includes occupants & cargo)

L X W X H	3,185 x 1,590 x 2,045 mm
FUEL CAPACITY	30 L
TURNING RAD.	5.4 m
GROUND CLEAR.	285 mm (std preload setting)
TYRE (F)	27 x 9R14 6PR
TYRE (R)	27 x 11R14 6PR

Model Colour: Fragment Camo Gray | Model Code: KRT800J

Kawasaki

RECREATIONAL UTILITY VEHICLE

TERYKS



OFF-ROAD EXCITEMENT

The strong and reliable V-Twin fuel injected engine has a CVT transmission with a centrifugal clutch. Electric selectable 2WD/4WD and 4WD with a locked front differential for maximum traction when required. Standard with roof, front brush guard, LED headlights and Electric Power Steering.

POWERFUL V-TWIN ENGINE
ROPS APPROVED CAB FRAME
FOX LSC PIGGYBACK SHOCKS
TILTING CARGO BED
SPEED SENSITIVE ELECTRIC POWER STEERING (EPS)
STRONG 3-YEAR LIMITED WARRANTY

ENGINE TYPE	4-Stroke V-Twin Petrol, EFI	L X W X H	3,000 x 1,590 x 1,995 mm
DISPLACEMENT	783 cm ³	FUEL CAPACITY	30 L
BORE x STROKE	85.0 x 69.0 mm	TURNING RAD.	5.4 m
TRANSMISSION	Dual range CVT with centrifugal, front differential lock and reverse	GROUND CLEAR.	285 mm (std preload setting)
CURB MASS	724 kg*	TYRE (F)	27 x 9R14 6PR
LOAD CAPACITY	499 kg (includes occupants & cargo)	TYRE (R)	27 x 11R14 6PR

Model Colour: Metallic Electric Turquoise / Super Black | Model Code: KRF800J

Kawasaki

AG MOTORCYCLE

KLX 150BF

Kawasaki
LEARNER
APPROVED

*Single seat only



FOR THE URBAN JUNGLE

Dual purpose motorcycle with off-road capability. Simple, yet reliable air-cooled single cylinder engine, mounted on large wheels. Sharp styling further adds to pride in ownership. Easy riding on the road or blasting through the trails. Learner approved.

LEARNER APPROVED, ROAD-REGISTERABLE
ELECTRIC AND KICK START
EASY TO READ INSTRUMENTATION
ADJUSTABLE REAR SHOCK
COMPACT LIGHTWEIGHT CHASSIS
21" / 18" LARGE WHEELS

ENGINE TYPE	4-Stroke air cooled single
--------------------	----------------------------

DISPLACEMENT	144 cm ³
---------------------	---------------------

POWER / TORQUE	8.6 kW @ 8000 rpm 11.3 N.m @ 6500 rpm
-----------------------	--

TRANSMISSION	5-speed
---------------------	---------

CURB MASS	117 kg
------------------	--------

SEAT HEIGHT	870 mm
--------------------	--------

L X W X H	2,070 x 950 x 1,155 mm
------------------	------------------------

FUEL CAPACITY	6.9 L
----------------------	-------

BRAKES (F)	Single ø240 mm petal disc
-------------------	---------------------------

BRAKES (R)	Single ø190 mm petal disc
-------------------	---------------------------

TYRE (F)	2.75-21 45P
-----------------	-------------

TYRE (R)	4.10-18 59P
-----------------	-------------

Model Colour: Lime Green | Model Code: KLX150F

Kawasaki

AG MOTORCYCLE

STOCKMAN



BUILT TOUGH FOR AUSSIE CONDITIONS

The Kawasaki STOCKMAN is uniquely built to suit Australian farm work. Reliable and robust with a smooth 233 cc engine suited to all day work. The modern off-road ag bike.

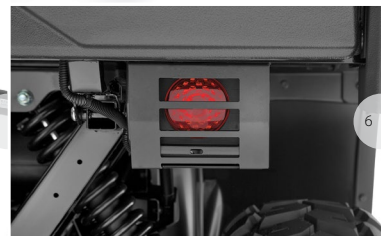
*Not road registerable.

21" (F), 18" (R) WHEELS WITH ENDURO TYRES
LARGE, BRIGHT HEADLIGHT
FRONT AND REAR CARRIERS
DUAL SIDE STANDS
CLUTCH LEVER LOCK
ALUMINIUM LEVER GUARDS

ENGINE TYPE	4-Stroke air cooled single	L X W X H	2,105 x 920 x 1,110 mm
DISPLACEMENT	233 cm ³	FUEL CAPACITY	7.5 L
BORE x STROKE	67.0 x 66.0 mm	BRAKES (F)	Single 265 mm petal disc
TRANSMISSION	6-speed	BRAKES (R)	Single 220 mm petal disc
CURB MASS	137 kg*	TYRE (F)	80/100-21 51M
SEAT HEIGHT	845 mm	TYRE (R)	100/100-18 59M

Model Colour: Olive Green / Lime Green | Model Code: KV230A

Kawasaki



MULE

Kawasaki

GENUINE ACCESSORIES

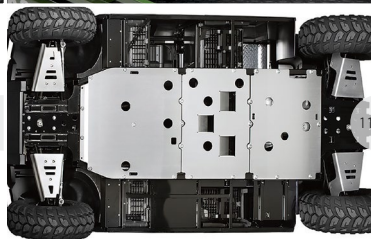


A WIDE RANGE OF ACCESSORIES FOR ALL APPLICATIONS

Go to www.kawasaki.com.au to see the full range (or scan the QR Code above)

- | | | |
|--------------------------|----------------------|----------------------------|
| 1. CENTRE CONSOLE | 5. REAR VIEW MIRROR | 9. KQR MOUNT AND CARGO BOX |
| 2. REAR TRAY | 6. TAIL LIGHT GUARD | 10. BED LIFT KIT |
| 3. TRAILER HITCH AND PIN | 7. TERYX BRUSH GUARD | 11. PROTECTIVE SKID PLATES |
| 4. ROOF AND SCREEN | 8. GUN BOOTS | 12. REVERSING BEEPER |

CONTACT YOUR DEALER FOR RANGE AND AVAILABILITY



'Global Kawasaki'

Kawasaki Group Mission Statement

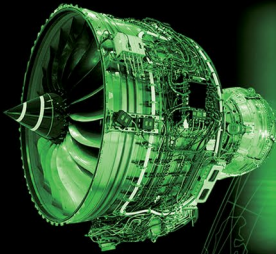
Kawasaki, working as one for the good of the planet



Kawasaki
Let the good times roll

We are the Kawasaki Group, a global technology leader with diverse integrated strengths. We create new value - for a better environment and a brighter future for generations to come.

Aerospace



Rolling Stock



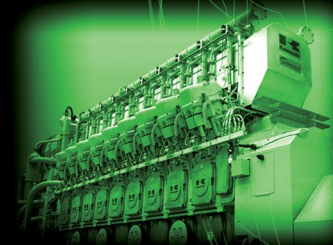
Ships & Offshore Structures



Industrial Robots



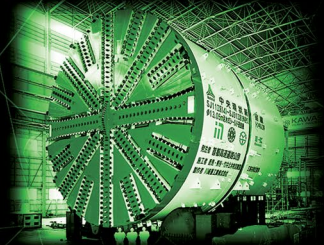
Energy Facilities



Environmental & Recycling Plants



Infrastructure



Kawasaki

Let the Good Times Roll

2023 AGRICULTURAL RANGE

UTILITY VEHICLES | RUV | AG MOTORBIKES

MULE

TERYX

KRX

STOCKMAN




GO TO WWW.KAWASAKI.COM.AU FOR THE LATEST KAWASAKI MULES, RUVS, NEWS, ACCESSORIES & DEALER INFORMATION.

Please read your Owner's Manual. Kawasaki Side x Side, RUV & Ag Motorcycles are designed for off road use only by operators aged 16 years or older with a valid drivers licence*. Familiarise yourself with all attached warning labels. Always wear an approved helmet, eye protection, gloves and protective clothing. Drive or ride carefully, always wear seat belts where provided, always ensure the passenger uses available grab handles keeping all hands and arms inside the vehicle. Never exceed maximum load carrying or towing capacities. Never operate Kawasaki Side x Side, RUV or Ag Motorcycles under the influence of drugs or alcohol. Kawasaki reserves the right to change, without notice, specifications, colours, materials and other items. Models shown may not be available or may differ from those in the brochure, some images are not the current model, some images shown with options or accessories. Action images depict professional riders under controlled conditions. (*KLX150BF models are road registrable.)

JOIN KAWASAKI TEAM GREEN AUSTRALIA AT: WWW.KAWASAKI.COM.AU/KAWASAKI-TEAM-GREEN-AUSTRALIA

 facebook.com/kawasakiaus

 [@kawasakimotors](https://www.instagram.com/kawasakimotors)

Kawasaki
Motors Finance

Kawasaki
Insurances

Kawasaki
GENUINE ACCESSORIES

Kawasaki

Let the Good Times Roll

JETSKI[®]

watercraft

2023 JETSKI RANGE



This vehicle is NOT designed for use at night. The front accent lights are a design feature and are NOT intended as headlamps. Equipment illustrated and specifications may vary to meet individual markets.

Kawasaki



SUPERCHARGED

JETSKI ULTRA 310LX



5 YEAR
WARRANTY

This vehicle is NOT designed for use at night. The front accent lights are a design feature and are NOT intended as headlamps. Equipment illustrated and specifications may vary to meet individual markets.

THE ONLY ONE FOR GOOD TIMES.

The Ultra 310LX is the flagship, luxury model in the Ultra 310 range. Equipped with Kawasaki Smart Reverse with Deceleration (KSRD), JETSOUND 4s audio system, rearview camera, accent lights, multi-mount deck rails, large rear deck and LXury seat.

KSRD (KAWASAKI SMART REVERSE WITH DECELERATION)
LAUNCH CONTROL & POWER MODES
TFT FULL COLOUR INSTRUMENTATION
REARVIEW CAMERA & ACCENT LIGHTS
JETSOUND AUDIO SYSTEM
3-PERSON ERGO-FIT LXury SEAT

ENGINE TYPE	Supercharged intercooled 4-stroke in-line four
DISPLACEMENT	1,498 cm ³
POWER & TORQUE	228 kW / 286 N.m
CURB MASS	494 kg*

L X W X H	3,580x 1,195 x 1,240 mm
FUEL CAPACITY	80 L
FUEL SYSTEM	Fuel injected 60 mm diameter
PROPULSION SYSTEM	160 mm jet pump, axial flow, single stage

Model Colour: Ebony With Metallic Shadow Gold | Model Code: JT1500V

Kawasaki

Kawasaki



SUPERCHARGED

JETSKI ULTRA 310LX-S



**5 YEAR
WARRANTY**

This vehicle is NOT designed for use at night. The front accent lights are a design feature and are NOT intended as headlamps. Equipment illustrated and specifications may vary to meet individual markets.

MORE COMFORT, MORE EQUIPMENT

The Ultra 310LX-S is the Luxury-Sport model in the Ultra 310 range. Equipped with Kawasaki Smart Reverse with Deceleration (KSRD), TFT Screen, large rear deck, rearview camera and multi-mount deck rails. The Ultra 310LX-S is a 3-seat Jet Ski ready for sport riding or a family day on the water.

- LARGE ULTRA DECK
- MULTI-MOUNT DECK RAIL SYSTEM
- REARVIEW CAMERA & ACCENT LIGHTS
- KSRD (KAWASAKI SMART REVERSE WITH DECELERATION)
- LAUNCH CONTROL & POWER MODES
- TFT FULL COLOUR INSTRUMENTATION

ENGINE TYPE	Supercharged intercooled 4-stroke in-line four
DISPLACEMENT	1,498 cm ³
POWER & TORQUE	228 kW / 286 N.m
CURB MASS	483 kg*

L X W X H	3,580x 1,195 x 1,180 mm
FUEL CAPACITY	80 L
FUEL SYSTEM	Fuel injected 60 mm diameter
PROPULSION SYSTEM	160 mm jet pump, axial flow, single stage

Model Colour: Ebony With Lime Green | Model Code: JT1500W

Kawasaki

Kawasaki



SUPERCHARGED

JETSKI ULTRA 310X



5 YEAR
WARRANTY

THE MOST POWERFUL JET SKI EVER

ULTRA 310X: FUN: The “Standard” model of the Series – if any model with a 310 PS output can be called “standard” – is loaded with flagship features including the 7” TFT display, KSRD, a slim new seat, Easy-Access Storage, Easy-Access Rear Pocket, Easy-Access Cleats, Multi-Mount Bars and cup holders. Its vivid colouring gives it an active image.

KSRD (KAWASAKI SMART REVERSE WITH DECELERATION)
LAUNCH CONTROL & POWER MODE SELECTION
7” FULL COLOUR TFT INSTRUMENTATION
SLIM 2-PIECE, 3-PERSON SEAT
DEEP V-HULL: SUPERB ALL-WATER HANDLING
KAWASAKI RIVER MARK – THE SYMBOL OF PERFORMANCE

ENGINE TYPE	Supercharged intercooled 4-stroke in-line four
DISPLACEMENT	1,498 cm ³
POWER & TORQUE	228 kW / 286 N.m
CURB MASS	468 kg*

L X W X H	3,440 x 1,195 x 1,180 mm
FUEL CAPACITY	80 L
FUEL SYSTEM	Fuel injected 60 mm diameter
PROPULSION SYSTEM	160 mm jet pump, axial flow, single stage

Model Colour: Ebony With Metallic Electric Turquoise | Model Code: JT1500X

Kawasaki

Kawasaki



NON-SUPERCHARGED

JETSKI ULTRA 160LX



This vehicle is NOT designed for use at night. The front accent lights are a design feature and are NOT intended as headlamps. Equipment illustrated and specifications may vary to meet individual markets.

5 YEAR
WARRANTY

THE ONLY ONE FOR GOOD TIMES.

3-passenger seating and a powerful 1,498cc engine ensure a day to remember for the entire crew. The modern hull design, same as the flagship Jet Ski Ultra 310 models, is something worth showing off whether you're parked in the driveway or in the water.

JETSOUND 4s
ERGO-FIT LXury SEAT
ELECTRONIC CRUISE CONTROL
KSRD (KAWASAKI SMART REVERSE WITH DECELERATION)
7" TFT FULL COLOUR DISPLAY
POWER MODE SELECTION

ENGINE TYPE	4-stroke in-line four
DISPLACEMENT	1,498 cm ³
POWER & TORQUE	118 kW / 152 N.m
CURB MASS	448 kg*

L X W X H	3,580 x 1,195 x 1,240 mm
FUEL CAPACITY	80 L
FUEL SYSTEM	Fuel injected 60 mm diameter
PROPULSION SYSTEM	155 mm jet pump, axial flow, single stage

Model Colour: Ebony With Metallic Shadow Gold | Model Code: JT1500Y

Kawasaki

Kawasaki



NON-SUPERCHARGED

JETSKI ULTRA 160 LX-5



This vehicle is NOT designed for use at night. The front accent lights are a design feature and are NOT intended as headlamps. Equipment illustrated and specifications may vary to meet individual markets.

5 YEAR
WARRANTY

THE ONLY ONE FOR GOOD TIMES.

3-passenger seating and a powerful 1,498cc engine ensure a day to remember for the entire crew. The modern hull design, same as the flagship Jet Ski Ultra 310 models, is something worth showing off whether you're parked in the driveway or in the water.

KSRD (KAWASAKI SMART REVERSE WITH DECELERATION)
7" TFT FULL COLOUR DISPLAY
ELECTRONIC CRUISE CONTROL
POWER MODE SELECTION
LAUNCH CONTROL
ELECTRIC TRIM-CONTROL SYSTEM

ENGINE TYPE	4-stroke in-line four	L X W X H	3,580 x 1,195 x 1,180 mm
DISPLACEMENT	1,498 cm ³	FUEL CAPACITY	80 L
POWER & TORQUE	118 kW / 152 N.m	FUEL SYSTEM	Fuel injected 60 mm diameter
CURB MASS	437 kg*	PROPULSION SYSTEM	155 mm jet pump, axial flow, single stage

Model Colour: Ebony With Candy Steel Furnace Orange | Model Code: JT1500Z

Kawasaki

NON-SUPERCHARGED

JETSKI STX160LX



5 YEAR
WARRANTY

IGNITE THE FUN

When calm waters need stirring up, look to the Jet Ski STX160LX for the perfect dose of fun. The Jet Ski STX160 lineup offers class-leading acceleration, agile handling performance and three-person seating plus several easy-to-use rider aid functions.

JETSOUND BLUETOOTH AUDIO SYSTEM
DIGITAL FUEL INJECTION
ALL DIGITAL METER PANEL
ELECTRONIC CRUISE CONTROL
SMART LEARNING OPERATION
TWO-TONE LXury SEAT

ENGINE TYPE	4-stroke water cooled in-line four cylinder
DISPLACEMENT	1,498 cm ³
POWER & TORQUE	118 kW / 152 N.m
CURB MASS	398 kg*

L X W X H	3,152 x 1,181 x 1,153 mm
FUEL CAPACITY	78 L
FUEL SYSTEM	Fuel injected 60 mm diameter
PROPULSION SYSTEM	148 mm jet pump, axial flow, single stage

Model Colour: Ebony With Neon Red | Model Code: JT1500T

Kawasaki

NON-SUPERCHARGED

JETSKI STX160X



5 YEAR
WARRANTY

SLEEK, DYNAMIC DESIGN

Powered by a class-leading 1,498cc engine with digital fuel injection, the Jet Ski STX160X personal watercraft delivers strong acceleration, excellent fuel economy and low emissions. The agile composite hull and advanced rider features make it the ideal choice for water-loving enthusiasts.

ELECTRONIC CRUISE CONTROL
REVERSE LEVER ON LEFT SIDE
SLIDE AND LIFT REAR SEAT STORAGE
COMFORT HANDLE GRIPS
DIGITAL FUEL INJECTION
ECONOMICAL RIDING INDICATOR

ENGINE TYPE	4-stroke water cooled in-line four cylinder
--------------------	---

DISPLACEMENT	1,498 cm ³
---------------------	-----------------------

POWER & TORQUE	118 kW / 152 N.m
---------------------------	------------------

CURB MASS	392 kg*
------------------	---------

L X W X H	3,152 x 1,181 x 1,153 mm
------------------	--------------------------

FUEL CAPACITY	78 L
----------------------	------

FUEL SYSTEM	Fuel injected 60 mm diameter
--------------------	------------------------------

PROPULSION SYSTEM	148 mm jet pump, axial flow, single stage
--------------------------	---

Model Colour: Ebony With Lime Green | Model Code: JT1500S

Kawasaki

STAND UP

JETSKI SX-R 160



5 YEAR
WARRANTY

IGNITE THE FUN. IGNITE THE PASSION.

For high powered thrills in the water the Jet Ski SX-R 160 is your first choice. A sophisticated, high performance machine that features the latest in engine and hull technology. Agile, stable stand up performance from the creators of the original Jet Ski.

EXCEPTIONAL STABILITY & PERFORMANCE
RIDER ACTIVE HULL
WIDE DECK WITH ROOM TO MOVE
MX STYLE HANDLEBAR
MANAGEABLE 4-STROKE POWER
KAWASAKI SPLASH DEFLECTOR (KSD)

ENGINE TYPE	4-stroke water cooled in-line four cylinder
DISPLACEMENT	1,498 cm ³
POWER & TORQUE	118 kW / 152 N.m
CURB MASS	250 kg*

L X W X H	2,655 x 765 x 840 mm
FUEL CAPACITY	23 L
FUEL SYSTEM	Fuel injected 60 mm diameter
PROPULSION SYSTEM	148 mm jet pump, axial flow, single stage

Model Colour: Ebony / Lime Green | Model Code: JS1500A

Kawasaki



50

**YEARS OF
EXHILARATION**



This vehicle is NOT designed for use at night. The front accent lights are a design feature and are NOT intended as headlights. Equipment illustrated and specifications may vary to meet individual markets.

Kawasaki
Let the Good Times Roll

Kawasaki

Let the Good Times Roll

JETSKI[®] watercraft

2023 JETSKI RANGE

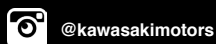


CHECK OUT WWW.KAWASAKI.COM.AU FOR COMPLETE INFORMATION ON THE LATEST AND GREATEST JET SKI WATERCRAFT, KAWASAKI NEWS AND TO FIND YOUR LOCAL DEALER!

TO PURCHASE ACCESSORIES, SEE YOUR LOCAL KAWASAKI DEALER OR VISIT OUR WEBSITE.

Always ensure that you study and obey local boating laws and regulations before putting your JET SKI in the water. Enjoy safe riding and respect the rights of other water users. Always wear appropriate apparel, including eye wear, a personal floatation device, and protective swimwear such as wetsuit bottoms. Operate your craft safely, in accordance with manufacturer's recommendations, and never under the influence of alcohol or drugs. Remember that the rear-view mirrors on some JET SKI watercraft do not provide a full view to the rear. Look aft to make sure. Specifications have been achieved by production models under controlled conditions with professional riders. Never attempt any action which is potentially dangerous. All action images photographed under controlled conditions with professional riders. Kawasaki JET SKI is a trademark of Kawasaki Heavy Industries, Ltd. Registered in Australia.

JOIN KAWASAKI TEAM GREEN AUSTRALIA AT: WWW.KAWASAKI.COM.AU/EN-AU/TEAMGREEN



Kawasaki
Motors Finance

Kawasaki
Insurances

Kawasaki
GENUINE ACCESSORIES

KMA-B-JSRANGE23

*Specifications are subject to change without notice. Includes full tank of fuel, tool kit and all fluids at optimum levels. Output measured at the crankshaft under controlled conditions. Actual performance may vary.