

## QUALITY

Winnebago RVs are designed and built around you, with superior craftsmanship, advanced manufacturing technologies and steel-focused construction to enhance safety and reliability.

## INNOVATION

From groundbreaking RVs to game-changing features to the spacious floorplans made possible by our SmartSpace™ design, our heritage is unrivaled for continuous industry firsts in vehicle technology and design.

## SERVICE

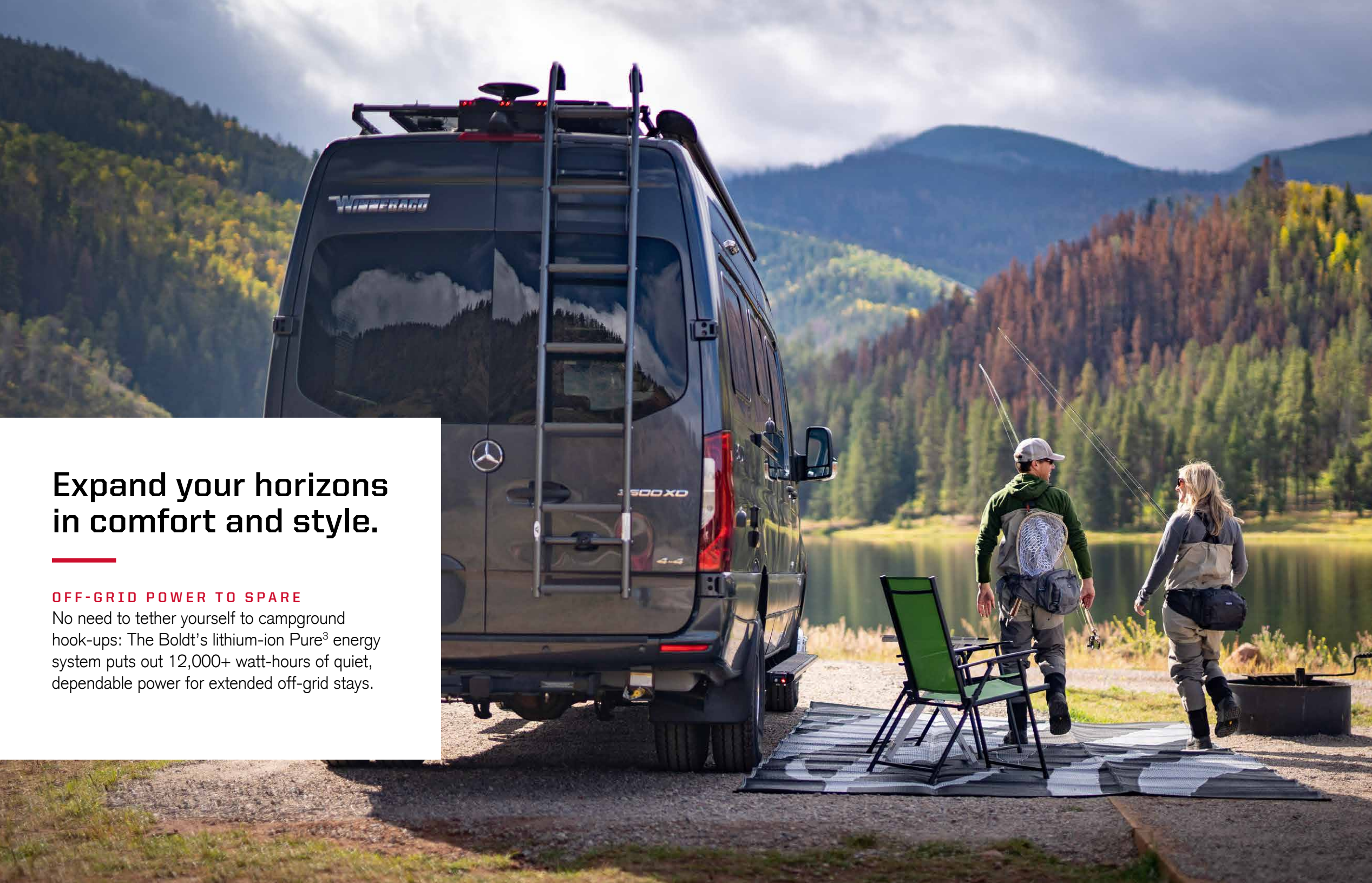
Our carefully chosen dealers are supported by factory training and our advanced parts supply system, while owners benefit from excellent real-world customer support as well as 24/7 access to online technical information.



©2022 Winnebago Printed in USA 08/22

**BOLDT**





## Expand your horizons in comfort and style.

### OFF-GRID POWER TO SPARE

No need to tether yourself to campground hook-ups: The Boldt's lithium-ion Pure<sup>3</sup> energy system puts out 12,000+ watt-hours of quiet, dependable power for extended off-grid stays.



### ROCK-SOLID FOUNDATION

In addition to available 4WD, the Boldt features the latest Mercedes-Benz convenience and safety advances, including lane-keeping and crosswind assist, adaptive cruise control, and MBUX<sup>®</sup> multimedia infotainment center.



### A VAN FOR ALL SEASONS

The Boldt is engineered for inclement weather, with extensive insulation, water lines routed to protect against freezing, Truma's Combi<sup>®</sup> Eco Plus heating to keep you toasty, and Coleman<sup>®</sup>-Mach<sup>®</sup> 10 A/C to keep you cool.



### MAKE YOURSELF AT HOME - ANYWHERE

With premium furnishings like powered and heated swivel cab seats, removable swivel table and an ergonomic dinette (70BL), the Boldt provides a comfortable refuge wherever you go.







# Engineered to make the most of every square inch.

### FLEXIBLE EXTERIOR AMENITIES

Enjoy enhanced comfort outside and in, thanks to the Boldt's Bluetooth-controlled awning, side and rear door screens with magnetic closures and available movable ladder and roof rack for added hauling capacity.

### EFFICIENT GALLEY

Everything you need to prepare meals on the go: an induction cooktop, 4.3 cu. ft. refrigerator/freezer, microwave or microwave/convection oven, even a cold water purification system.

### WET BATH

Refresh yourself after an active day. The Boldt bath includes a toilet, shower with Oxygenics® showerhead, bath cabinet, towel bar, stainless sink (70KL), and powered roof vent.

### SLEEPING ARRANGEMENTS CONFORM TO YOUR NEEDS

The Flex Bed system easily goes from one large bed to twin beds, while the forward-facing dinette seat converts to a cross-coach sleeping surface (70BL), and an available cab seat bed offers additional sleeping space for an overnight guest.

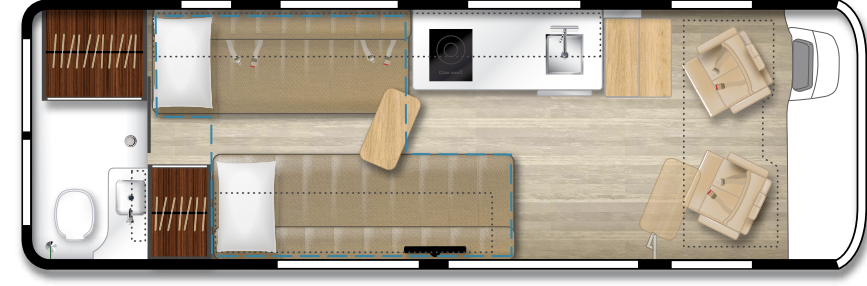
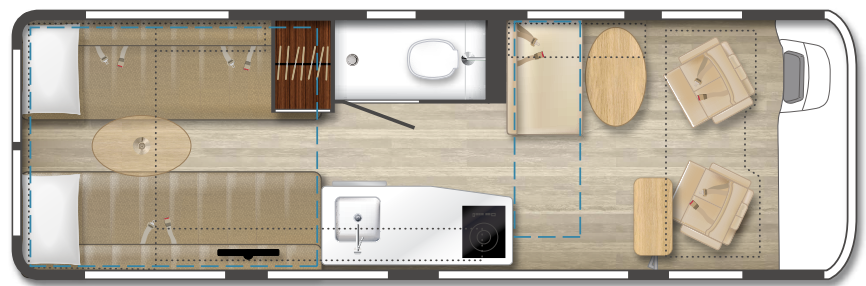
### SMART STORAGE SOLUTIONS

RAM® Tough Track™ mounts, a trunk storage compartment, overhead cabinet shelf, and Anything Keeper™ storage baskets provide secure storage and easy access to your gear.



70BL

70KL



Dotted lines denote overhead storage area. Blue dashed lines denote sleeping areas. Floorplans are representations only and are subject to change. Please contact a certified Winnebago dealer for more information.



# WINNEBAGO BOLDT / Specifications

WEIGHTS & MEASURES	70BL	70KL
Length	22'11"	22'11"
Exterior Height <sup>1</sup>	9'8"/9'10" <sup>AA</sup>	9'8"/9'10" <sup>AA</sup>
Exterior Width	6'4"	6'4"
Interior Height	6'3"	6'3"
Interior Width	5'10"	5'10"
Awning Length	13'	13'
Freshwater Tank Capacity <sup>2</sup> (gal.)	21	21
Water Heater Capacity (gal.)	2.6	2.6
Holding Tank Capacity – Black <sup>2</sup>	24 gal.	16 gal.
Holding Tank Capacity – Gray <sup>2</sup>	26 gal./10 gal. <sup>B</sup>	25 gal.
LP Capacity <sup>3</sup> (lbs.)	67.68	67.68
Fuel Capacity (gal.)	24.5	24.5
GCWR <sup>4</sup> (lbs.)	15,250	15,250
GVWR (lbs.)	11,030	11,030
GAWR – Front (lbs.)	4,410	4,410
GAWR – Rear (lbs.)	7,720	7,720
Wheelbase	170"	170"

A - Optional 4x4 chassis B - Galley water only

## Chassis

**Mercedes-Benz® Sprinter Chassis** 3.0L 6-cylinder, 188-hp, turbo-diesel engine 7G -Tronic automatic transmission, 220-amp. alternator

**Hydraulic brakes** w/ABS

**Stylized aluminum wheels**

**Trailer hitch** 5,000-lb. drawbar/500-lb. maximum vertical tongue weight

**7-pin wiring connector**

## OPTIONAL EQUIPMENT

**On-demand 4WD** w/low range electronic stability and traction control

## Cab Conveniences

**MBUX® touchscreen multimedia infotainment center** w/navigation, Wi-Fi hotspot, intelligent voice control and rear camera

**Dual airbags**

**Power adjustable, heated, swivel, slide and recline cab seats**

**DISTRONIC PLUS®** (adaptive cruise control)

**Power door locks** w/remote

**Power windows**

**Sunvisors**

**Blind spot assist**

**Active lane keeping assist**

**Active brake assist**

**Folding privacy screens for cab door windows**

**Appliqué package**

**Keyless entry** w/remote

**12-volt powerpoints**

**Rain sensor** w/integrated Wet Wiper system

**Collision avoidance system**

**Carpet cab floor mat**

**Power mirrors** w/defrost and turn signals

**Power steering** w/tilt and telescoping wheel

**3-point seat belts**

**Traffic sign assist**

**Crosswind assist**

**Cab Seats** w/Ultraleather® Covering

## Interior

**24" LED HDTV**

**OmniGo™ digital HDTV antenna**

**LED ceiling lights**

**USB charging ports**

**Systems monitor panel**

**Deluxe powered roof vent** w/rain cover

**RAM® Tough-Track™ Mounts**

**Assist bar** w/integrated RAM® Mount accessory

**Bluetooth® soundbar**

**Anything Keeper storage baskets**

**Cassette shades**

**Tinted coach windows**

**Roof port wiring access**

**Trunk storage compartment**

**Front cab overhead shelf**

**Vinyl flooring throughout**

## OPTIONAL EQUIPMENT

**Dual-pane, Euro Acrylic windows** w/cassette shades

**Front cab air mattress 30" x 65"** w/support base, cordless pump, repair kit and storage bag

## Galley

**Corian® solid-surface countertop**

**Single burner induction cooktop**

**Microwave oven** w/touch control (70BL)

**Microwave/convection oven** w/touch control (70KL)

**Pull-up table** (70KL)

**Removable pedestal table** (70BL)

**Stainless steel sink**

**4.3 cu. ft. (12V) single door compressor-driven refrigerator/freezer**

**Corian® sink cover with bamboo cutting board**

**Cold water purification system** (galley only)

**Dinette** w/forward facing seat and flex bed system (70BL)

**Spice rack compatible** w/RAM® Tough-Track™ Mounts

**Adjustable/Removable Swivel Table**

## Bath

**Shower curtain**

**Oxygenics® shower head**

**Toilet** w/foot pedal and sprayer

**Bath cabinet**

**Stainless steel sink** (70KL)

**Towel bar**

**Powered roof vent**

**Folding clothes rod** (70BL)

**Mirror**

**Shower** w/wall surround

**Tissue holder**

## Bedroom

**Twin beds featuring deluxe slat bed sleep system**

**Flex bed kit**

**Wardrobe** (70KL)

**Wardrobe** w/adjustable and removable shelves and clothes rod (70BL)

## Exterior

**Power sliding door** (NA w/4WD chassis)

**Side screen door** w/magnetic closure

**Rear screen door** w/ magnetic closure

**Electric patio awning** w/LED lighting

**Porch light** w/interior switch

**Aluminum running boards** w/rubber tread, ground effect lighting and pet loop attachment

**Rear mud guards**

## OPTIONAL EQUIPMENT

**Movable ladder**

**Luggage rack**

## Heating & Cooling System

**Coleman®-Mach® 10 non-ducted, quiet A/C**

**Truma Combi® Eco Plus Heating System** w/(2)

850-watt electric heating elements

## Electrical System

**Pure<sup>3</sup> Advanced Energy System** (4-module energy pack)

**3,600W Pure Sine Inverter**

**AC/DC load center/converter**

**30-amp. power cord**

**Exterior TV jack and DC receptacle**

**Exterior AC duplex receptacles**

**USB charger – dual DC**

**Coach battery disconnect system**

**(2) 115-watt solar panel/battery charger**

w/controller, junction box and plug for additional portable panel

## Plumbing System

**Winterization Package** water heater bypass valve and siphon tube

**Heated drainage system**

**On-demand water pump**

**Permanent-mount LP tank** w/gauge

**LPG accessory connection** (patio)

**Water purification system** (galley only)

**Holding tank flushing system**

**Service Center** color-coded labels, pressurized city water hook-up/tank diverter valve, drainage valves, exterior wash station w/pump switch (hot & cold water)

**12' sewer hose**

## Safety

**LP, smoke, and carbon monoxide detectors**

**Fire extinguisher**

**Ground fault interrupter**

**Daytime running lamps**

**High-mount brake lamps**

## Warranty

**12-month/24,000-mile basic warranty**

**See your dealer for complete warranty information.**

## FOOTNOTES

- The height of each model is measured to the top of the tallest standard feature and is based on the curb weight of a typically equipped unit. The actual height of our vehicle may vary by several inches depending on chassis or equipment variations. Please contact your dealer for further information.
- Capacities are based on measurements prior to tank installation. Slight capacity variations can result due to installation applications.
- Capacities shown are tank manufacturer's listed water capacity (W.C.). Actual filled LP capacity is 80% of listing due to overfilling prevention device on tank.
- Actual towing capacity is dependent on your particular loading and towing circumstances which includes the GVWR, GAWR and GCWR, as well as adequate trailer brakes. Please refer to the Operator's Manual of your vehicle for further towing information.

NA Not Available

Not all items available in combination. See dealer for details.

Because features, specification, equipment, and options may vary from those highlighted in this brochure, the buyer is responsible for confirming with the dealer the features, specifications, equipment, and options included in their specific vehicle. In addition, Winnebago's program of continuous product improvement may result in changes to vehicle specifications, equipment, model availability, and price without notice.

Winnebago recommends following the winter use guidelines and winterization procedures outlined in your owner's manual whenever camping in freezing conditions.

Unless noted, trademarks are the property of Winnebago Industries, Inc. Mercedes-Benz® is the registered trademark of Daimler AG. Bluetooth® is the registered trademark of Bluetooth SIG, Inc. Oxygenics® is a registered trademark of ETL, LLC. Truma Combi® is a registered trademark of Truma Gerätetechnik GmbH & Co. KG. Corian® is a registered trademark of E.I. DuPont De Nemours and Co. Ultraleather® is a registered trademark of Ultrafabrics, Inc. RAM® Mounts is a registered trademark of National Products, Inc. Coleman® is a registered trademark of Airxcel, Inc.

## EXTERIORS



### Arctic White

Full-body Paint



### Iridium Silver

Full-body Paint



### Tenorite Grey

Full-body Paint

## DECOR

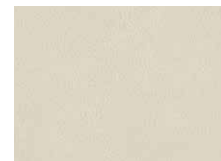
### Bleu



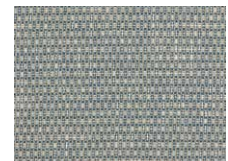
Ultraleather



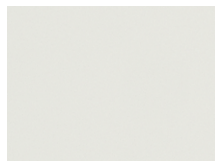
Accent Ultraleather



Wall Board



Bed Cover



Countertop



Vinyl Flooring



Wood – Macchiato

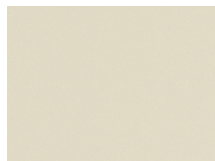


Wood – Colombian Walnut

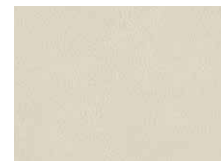
### Mecca



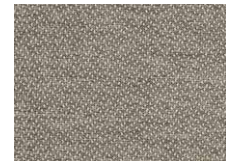
Ultraleather



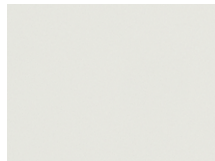
Accent Ultraleather



Wall Board



Bed Cover



Countertop



Vinyl Flooring



Wood – Macchiato



Wood – Colombian Walnut

