

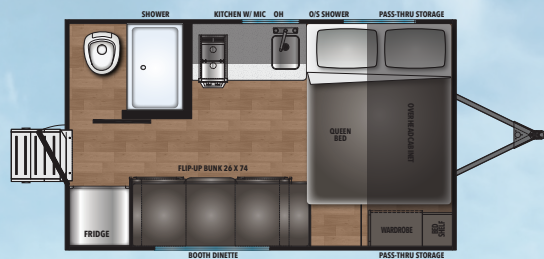


2024 SHASTA COMPACT & i-5 TRAVEL TRAILERS



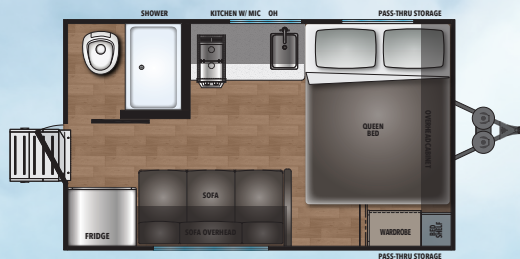
AFFORDABLE QUALITY... RICH HERITAGE – SINCE 1941

COMPACT FLOORPLANS



14BH

LENGTH 16'9" | HEIGHT 10'4" | UVW 3,079 | GVWR 4,000
HITCH WEIGHT 349 | TANKS: **FRESH 40**, BLACK 30, GREY 30



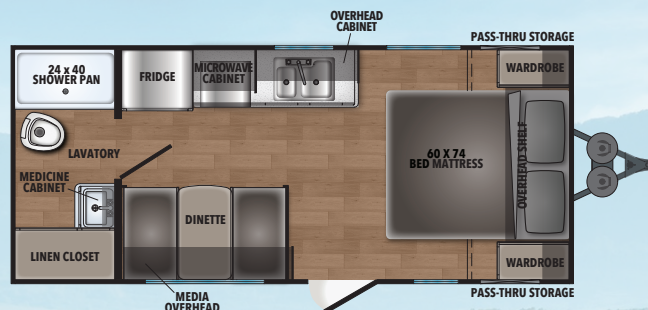
16RE

LENGTH 16'9" | HEIGHT 10'4" | UVW 2,964 | GVWR 4,000
HITCH WEIGHT 302 | TANKS: **FRESH 40**, BLACK 30, GREY 30



18BH

LENGTH 23'1" | HEIGHT 10'6" | UVW 3,400 | GVWR 5,050
HITCH WEIGHT 350 | TANKS: **FRESH 40**, BLACK 30, GREY 30



18FQ

LENGTH 23'1" | HEIGHT 10'6" | UVW 3,489 | GVWR 5,050
HITCH WEIGHT 375 | TANKS: **FRESH 40**, BLACK 30, GREY 30

TST TRUCK SYSTEM TECHNOLOGIES
A Clarience Technologies Company

TST TPMS IS STANDARD EQUIPMENT AND FACTORY INSTALLED!



"Air Carries the Load"
and TST's TPMS provides your family with peace of mind, knowing your tires are safely inflated before, during and after your trip!

TST CUSTOMER SUPPORT:
info@TSTtruck.com | (770) 889-9102

STANDARDS FOR 18BH & 18FQ

COMPACT PACKAGE INCLUDES

- Tire Pressure Monitoring System
- 6 Gal Gas/Elec DSI Water Heater
- Black Tank Flush
- Microwave Oven
- 13.5 A/C
- Seamless Countertops
- Solar & Back-up Camera Prep
- 4 Stabilizer Jacks
- 10 cu ft Residential Refer (4.5CUFT ON 16RE)
- Blue Tooth Portable Speaker
- Battery Disconnect
- 20# LP Bottle
- Under-Mount Kitchen Sink
- Roadside Assistance

EXTERIOR UPGRADES

- Spare Tire & Carrier
- Aluminum Wheels
- 17" Griddle & Grill Combo
- Power Tongue Jack IPO Manual
- 200 Watt Solar/ 30 AMP Controller
- Solid Step

INTERIOR UPGRADES

- 8 cu ft Gas/Elec Refer
- #### HEATING/COOLING
- 15K BTU A/C IPO 13,500

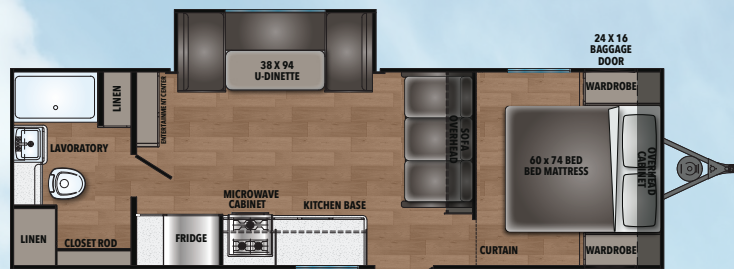


FOR MORE
INFORMATION, PICTURES,
AND 360 VIRTUAL TOURS
VISIT SHASTARVING.COM

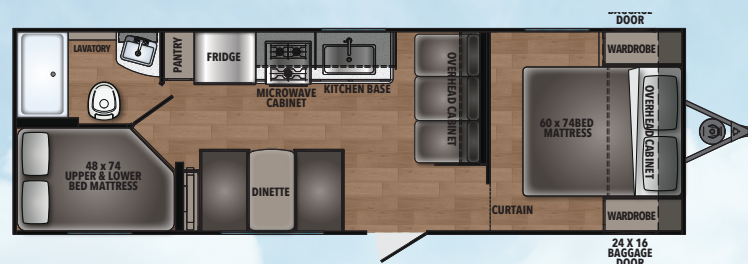


FOLLOW US

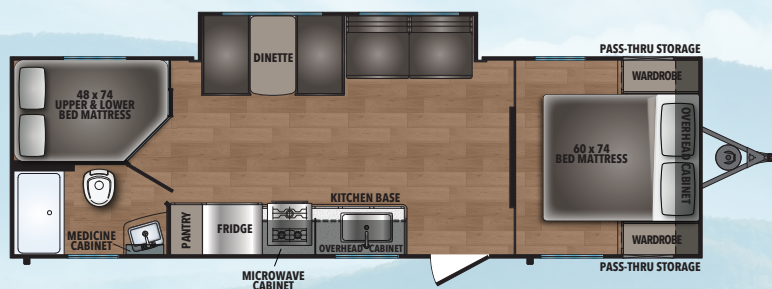



525RB

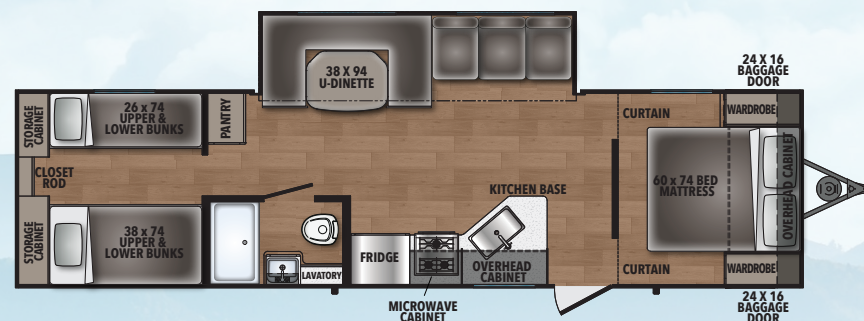
LENGTH 30'0" | HEIGHT 11'3" | UVW 5,055
GVWR 7,500 | HITCH WEIGHT 752
TANKS: **FRESH 40**, **BLACK 30**, **GREY 30**


526BH

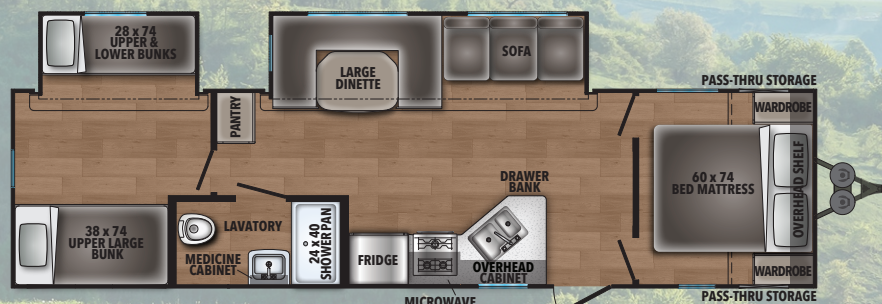
LENGTH 29'7" | HEIGHT 11'3" | UVW 4,525
GVWR 7,500 | HITCH WEIGHT 535
TANKS: **FRESH 40**, **BLACK 30**, **GREY 30**


526DB

LENGTH 31'0" | HEIGHT 11'3" | UVW 5,198
GVWR 7,580 | HITCH WEIGHT 662
TANKS: **FRESH 40**, **BLACK 30**, **GREY 30**


530QB

LENGTH 35'4" | HEIGHT 11'5" | UVW 6,136
GVWR 7,716 | HITCH WEIGHT 716
TANKS: **FRESH 40**, **BLACK 30**, **GREY 30**


532DS

LENGTH 33'1" | HEIGHT 11'5" | UVW 6,829
GVWR 9,567 | HITCH WEIGHT 767
TANKS: **FRESH 40**, **BLACK 30**, **GREY 30**

STANDARDS FOR 530QB, 526BH, AND 532DS

COMPACT PACKAGE INCLUDES

- Tire Pressure Monitoring System
- 6 Gal Gas/Elec DSI Water Heater
- Black Tank Flush
- Microwave Oven
- 13.5 Ducted A/C
- Seamless Countertops
- Blue Tooth Portable Speaker
- Solar & Back-up Camera Prep
- Monitor Panel
- Battery Disconnect
- 4 Stabilizer Jacks
- 10 cu ft Residential Refer
- 20# LP Bottle
- Roadside Assistance

EXTERIOR UPGRADES

- Spare Tire & Carrier
- 200 Watt Solar/ 30 AMP Controller

INTERIOR UPGRADES

- 8 cu ft Gas/Elec Refer

HEATING/COOLING

- 15K BTU A/C IPO 13,500
- 50 AMP with 2nd Prep
- 2nd 13.5K A/C with 50AMP Service (26 and Larger)





CUSTOMER SERVICE IS OUR #1 PRIORITY!



PRE-DELIVERY INSPECTION

20,000 square feet of quality assurance. The bare essentials for a premium product. This state-of-the-art facility gives immediate daily feedback to production for quality assurance in every unit built.

FREE MEMBERSHIP
to Forest River Owners' Group

www.forestriverfrog.com



SHASTA HISTORY

- 1941** – Robert Gray built the first Shasta to be used as mobile military housing in California.
- 1951** – Shasta produced what would become the most popular travel trailer of the era, The Toaster on Wheels, featuring the iconic Shasta Wings.
- 1972** – W.R. Grace Company buys Shasta from Robert Gray. At this time, Shasta was the largest seller of RV's in the US.
- 1976** – Coachmen Industries buys Shasta RV from W.R. Grace.
- 2010** – Shasta re-emerged as a division of Forest River.
- 2015** – Shasta introduced the 1961 Airflyte re-issue campers.
- 2021** – Celebrating 80 Years of Excellence!



FOLLOW US



Learn More
Scan this barcode using
a QR Reader on your
smart phone to learn
more about Forest River.



A Berkshire Hathaway company.

SHASTA OWNER "DIGITAL KIT" APP

Now you can have your Owner's Manual with you wherever you are. Download our FREE App from the App Store or Google Play and you'll have the information right at your fingertips.



24/7 EMERGENCY ROADSIDE ASSISTANCE WITH VEHICLE PURCHASE*

TOWING	WINCH-OUT
JUMP-STARTS	MOBILE MECHANIC
TIRE CHANGES	TECHNICAL
FLUID DELIVERY	SUPPORT
LOCKOUT	DEALER LOCATOR
SERVICE	SERVICES



*VALID FOR 1 YEAR FROM DATE OF PURCHASE

CUSTOMER SATISFACTION



www.ForestRiverBuyLocal.com

YOUR SHASTA DEALER:

All information contained in this brochure is believed to be accurate at the time of publication. However, during the model year, it may be necessary to make revisions and Forest River, Inc., reserves the right to make all such changes without notice, including prices, colors, materials, equipment and specifications as well as the addition of new models and the discontinuance of models shown in this brochure. Therefore, please consult with your Forest River, Inc., dealer and confirm the existence of any materials, design or specifications that are material to your purchase decision.
© Copyright 2023 Shasta, a Division of Forest River Inc – All Rights Reserved.

Shasta Recreational Vehicles
105 14th Avenue • Middlebury, IN 46540 • (574) 825.7178
www.ShastaRVing.com