

BRABUS
MARINE



BRABUS SHADOW 1000 & 900

BRABUS
MARINE



BRABUS PERFECTION & PASSION

BRABUS has been developing and building high-performance supercars for over 40 years; transforming vehicles of the Mercedes-Benz brand into stylish, unique vehicles – made in Germany. The world-renowned luxury mobility brand offers custom solutions for requests of any kind: From upgraded engines and elegantly styled aerodynamic enhancement concepts to expertly forged alloy wheels, as well as agile yet comfortable sport suspension systems and exclusive interior designs at only the highest level of craftsmanship.

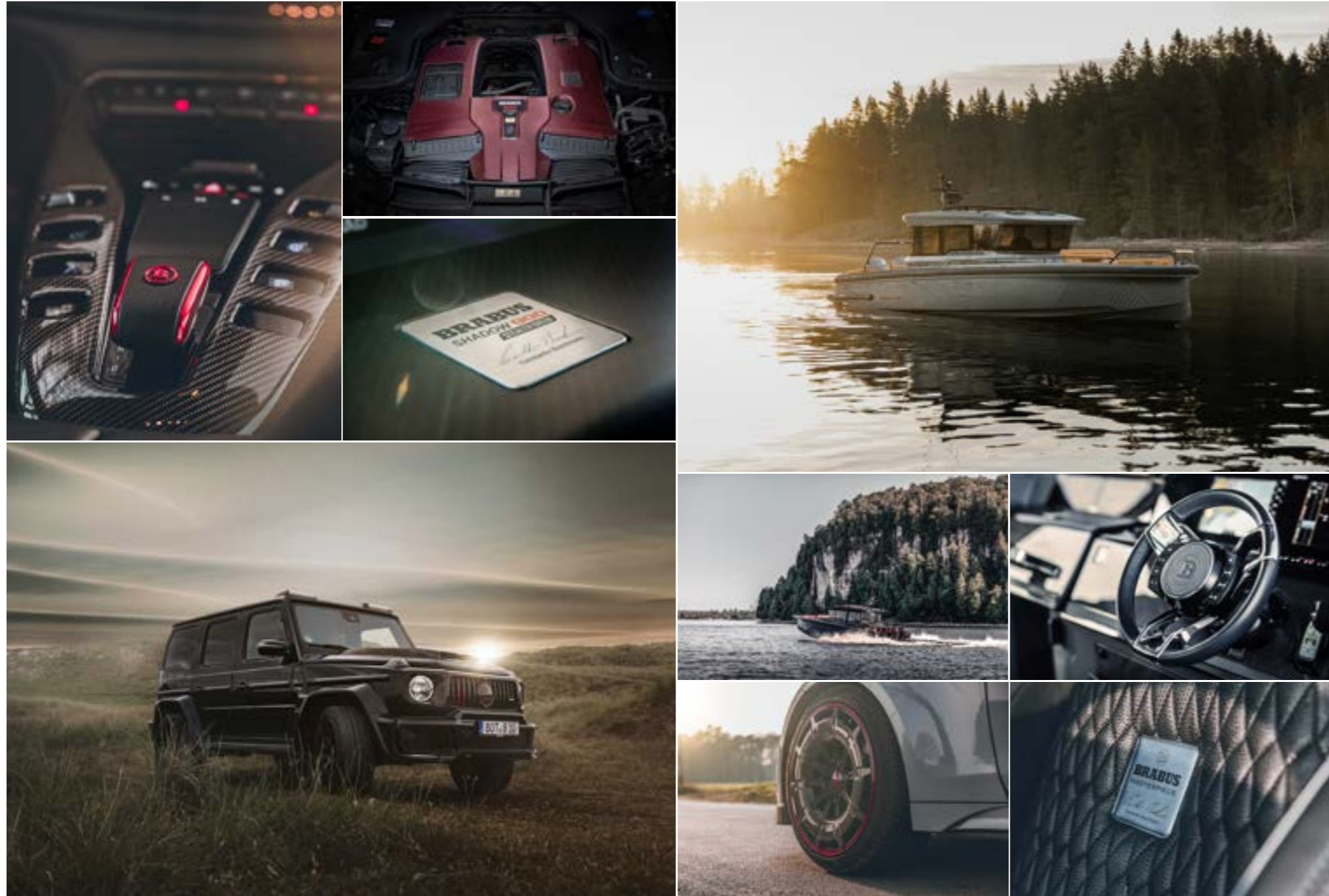
BRABUS

REDEFINING PERFORMANCE DAY BOATING

BRABUS Marine is the result of the cutting-edge alliance between two of the most renowned companies in their respective genres. Bringing together the long-established, high-performance luxury automotive car producer BRABUS and the award-winning Finnish boat builder Axopar Boats, to redefine luxury day boating through a range of ultra-exclusive and exciting powerboats.

BRABUS
MARINE





THE CORE OF BRABUS MARINE

As one of the world's most iconic boat brands specializing in luxury products for markets around the world, BRABUS Marine focuses on several key principles:

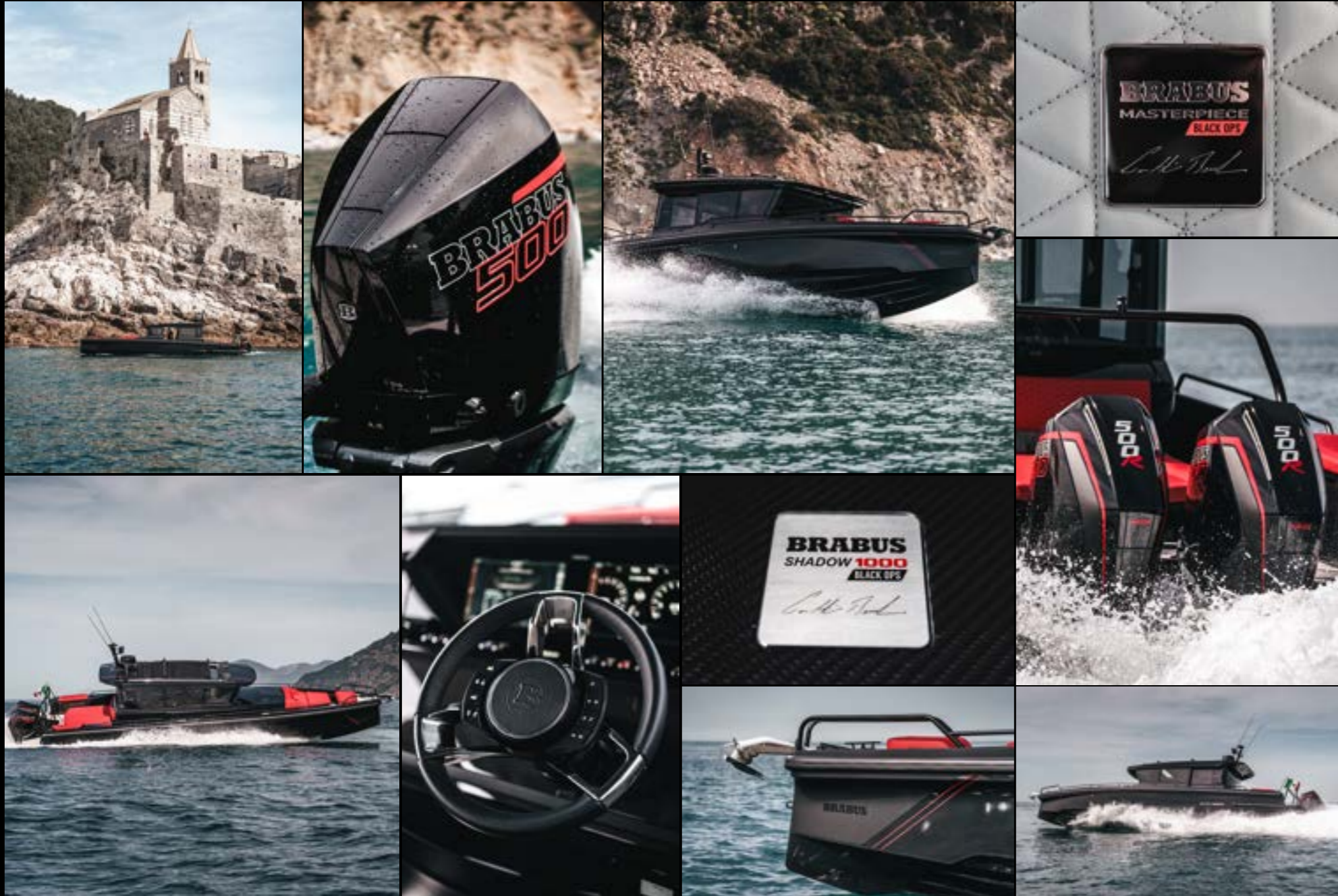
PERFORMANCE – All of our boats are characterized by superior performance courtesy of the latest high-tech engine technology. Through an unwavering commitment to perfection and a pursuit to redefine the superlative, the BRABUS Shadow range offers exceptional in-class power, an unparalleled driving experience and endless “go-anywhere” capabilities.

LUXURY – Our dual-personality design ensures that our performance figures do not come at the expense of on-board luxury. We guarantee sophisticated comfort as well as exclusivity on and below deck designed for a selected group of boat owners who wish to enjoy only the very best boating experience.

FUNCTIONALITY – Beyond the right looks and performance, BRABUS Marine as a brand stands for accessibility, comfortable handling and unmatched drivability. Through a 100 % tech driven development approach, we combine functionality with ease of movement.

BRABUS
MARINE





THE BRABUS SHADOW 1000 BLACK OPS SIGNATURE EDITION

Breathtaking acceleration and speed, race-responsive handling, and bespoke craftsmanship – the BRABUS Shadow 1000, BRABUS Marine's fastest ever superboat, is an entirely new breed of beast.

Every element on board is perfectly fine-tuned and meticulously hand-crafted with the attention to detail that BRABUS Marine is renowned for. From the signature paint scheme to the elegant upholstery and branded detailing, this sporty racing machine sets a new standard in luxury day-boating. Marked by the BRABUS Sign of Excellence, it is a true Masterpiece, built to the highest possible standards in typical BRABUS fashion.

The BRABUS Shadow 1000 Black Ops Signature Edition is a thrilling addition alongside the award-winning 37-foot BRABUS Shadow 900 series and follows the BRABUS Masterpiece design philosophy, with different power ranges being produced side by side as they cater to differing clienteles.

THE BRABUS SHADOW 1000 BLACK OPS SIGNATURE EDITION

Available in Cross-Cabin and Sun-Top configurations, the all-new Shadow 1000 range and fastest Shadow ever, is the ultimate combination of pure excitement and uncompromising strength that redefines the limits of what is possible for luxury performance boats.

It is the Gran Turismo of the sea, radiating raw BRABUS power, race-responsive steering, and handling that guarantees an unfiltered, high-performance driving experience.

While the Shadow 900 remains a highly popular option for customers worldwide in search of the latest in luxurious, comfortable, and fast long-distance cruisers, the new Shadow 1000 will be taking things further than ever before. guarantees an unfiltered, high-performance driving experience.



BRABUS SHADOW 1000 SUN-TOP BLACK OPS SIGNATURE EDITION,
BRABUS GRAPHITE UPHOLSTERY & WET BAR AFT OPTION



BRABUS SHADOW 1000 XC CROSS CABIN BLACK OPS SIGNATURE EDITION,
BRABUS RED UPHOLSTERY & MULTI STORAGE COMPARTMENT AFT OPTION



THE BRABUS SHADOW 1000 PHANTOM GRAY SIGNATURE EDITION

Pure excitement and unstoppable power come together to redefine the limits of what is possible for luxury performance boats. The BRABUS Shadow 1000 is one thing above all else: an absolute rulebreaker.

Designed for the bold who are ready to live beyond the limits, the head-turning Phantom Gray Signature Edition is the latest newcomer Signature Edition of the BRABUS Shadow 1000 range. Inspired by the BRABUS Crawler off-road supercar, this Signature Edition boasts an unmistakable Phantom Gray paint scheme and combines BRABUS typical carbon fiber detailing with exclusive BRABUS Red upholstery colors and outfitting.

From exhilarating speeds to unparalleled maneuverability, every aspect of the BRABUS Shadow 1000 XC Cross-Cabin and Sun-Top models is engineered to perfection. The superboat range is equipped with twin Mercury V8 500R racing engines, delivering a total of 1,000 horsepower right at your fingertips courtesy of the latest technology available in the industry.

THE BRABUS SHADOW 1000 PHANTOM GRAY SIGNATURE EDITION

Breathtaking acceleration, high speeds, race-responsive handling and outrageously good looks. Cruise the waters in the adrenaline-fueled open Sun-Top model or the fully enclosed XC Cross Cabin model.



BRABUS SHADOW 1000 SUN-TOP BLACK OPS SIGNATURE EDITION,
BRABUS RED UPHOLSTERY & MULTISTORAGE COMPARTMENT AFT OPTION

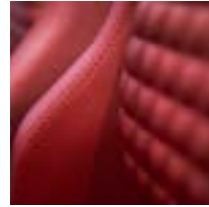


BRABUS SHADOW 1000 XC CROSS CABIN BLACK OPS SIGNATURE EDITION,
BRABUS RED UPHOLSTERY & U-SOFA AFT OPTION

SHADOW 1000 CUSTOMIZING OPTIONS

Take pleasure in customizing your boat from a selection of high quality gelcoat colours for your Shadow 1000, and let your boat truly express your personality. Choose from our modern and contemporary colours; Platinum Grey, Quantum White or Glacier Blue and finish your customization by selecting one of the vibrant fabric colours; BRABUS Red, BRABUS Platinum, BRABUS Graphite, BRABUS Sunrise or BRABUS Ice or BRABUS Merlot. Furthermore, you can choose between two BRABUS® Fine Leather colour alternatives in the main cabin (XC model), front lounge and optional aft cabin.

UPHOLSTERY



BRABUS RED



BRABUS PLATINUM



BRABUS GRAPHITE



BRABUS SUNRISE



BRABUS ICE

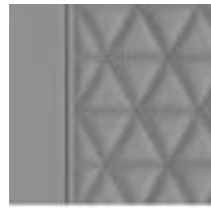


BRABUS MERLOT

UPHOLSTERY INTERIOR



BRABUS FINE LEATHER
BLACK/LIGHT GREY



BRABUS FINE LEATHER
LIGHT GREY

CARBON FIBER COLOURS



GLOSSY BLACK



MATTE BLACK

OUTFITTING PACKAGE*

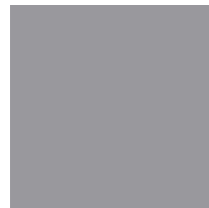


BLACK

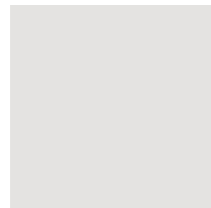


RED

HULL COLOURS



PLATINUM GREY



QUANTUM WHITE

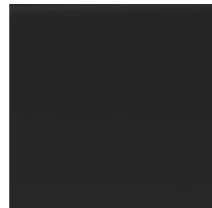


GLACIER BLUE



CAMO WRAP**

SIGNATURE EDITION HULL COLOURS



BLACK OPS



PHANTOM GREY



DEEP BLUE



STEALTH GREEN

* Only available for Signature Edition ** Camo wrap can be opted for all hull colours

STANDARD OPEN AFT
PLATINUM GREY
BRABUS RED UPHOLSTERY



AFT BENCH
BLACK OPS SIGNATURE EDITION
BRABUS RED UPHOLSTERY



WET BAR
GLACIER BLUE, CAMO WRAP
BRABUS ICE UPHOLSTERY



AFT CABIN
BLACK OPS SIGNATURE EDITION
BRABUS RED UPHOLSTERY



MULTI STORAGE COMPARTMENT
QUANTUM WHITE
MERLOT UPHOLSTERY



U-SOFA
PHANTOM GRAY
BRABUS RED UPHOLSTERY



SHADOW 1000 SPECIFICATIONS

XC CROSS CABIN

Overall Length (incl. Engines)	11.6 m / 38ft
Beam	3.35 m / 11ft
Draft to props	0,85 m / 2ft 9in
Weight (incl. engines)	5400 kg / 11905 lbs
Fuel Capacity	730 litres / 192 gal
Construction	GRP
Classification	B:10 - C:12
Max. speed	up to 60 knots
Outboard engines	2x 500 hp
Hull design	Twin stepped 20 degree V "Sharp entry hull"
Accommodation /Berths*	2 persons (+ 2*)

* with optional Aft Cabin option

SUN-TOP

Overall Length (incl. Engines)	11.6 m / 38ft
Beam	3.35 m / 11ft
Draft to props	0,85 m / 2ft 9in
Weight (incl. engines)	5123 kg / 11294 lbs
Fuel Capacity	730 litres / 192 gal
Construction	GRP
Classification	B:10 - C:12
Max. speed	up to 60 knots
Outboard engines	2x 500 hp
Hull design	Twin stepped 20 degree V "Sharp entry hull"
Accommodation /Berths*	2 persons (+ 2*)

* with optional Aft Cabin option

Specifications may be changed without prior notice. Performance may vary due to equipment, weather and load conditions.



reddot winner 2020

BRABUS SHADOW 900 THE RED DOT AWARD WINNER 2020

The Red Dot Design Awards reviews the best new products of the year. Red Dot stands for belonging to the best in design and business. **It is recognised as being one of the most prestigious design awards in the world.** Excellent design is selected by competent expert juries in the areas of product design, communication design, and design concepts. The hotly contested Product Design category is where the world's top brands meet to compete.

The **BRABUS Shadow 900** range winning the latest 2020 Red Dot Award in the Product Design Category is a welcome achievement and accolade for BRABUS Marine. The BRABUS Shadow 900 Sun Top combines an eye-catching, elegant design with technical innovations and high performance.

"Ours is a new way of working within the industry. By utilising our 'shared-platform' thinking, design of the Shadow 900 range is the result of three unique parties, namely, BRABUS, BRABUS Marine and Navia design agency co-contributing and therefore co-designing together."

JAN-ERIK VIITALA

Founding Partner
Axopar Boats / BRABUS Marine

"The international esteem gained from receiving a Red Dot Design Award proves the BRABUS Shadow 900 is an outstanding product, packed with previously unseen innovation, such as the amazing front cabin Gullwing Doors and the clever use of internal and external deck space."

CONSTANTIN BUSCHMANN

CEO
BRABUS GmbH





BRABUS SHADOW 900 XC CROSS CABIN MOTOR BOAT AWARDS WINNER 2022

The Motor Boat Awards are one of the most renowned international boating awards in the industry, held annually since 2007 by Motor Boat & Yachting. An expert jury is thoroughly testing hundreds of boats over months on rigorous sea trials to see how well the boats are meeting the market requirements and demands in relation to size, design and ability, and value for money - taking the boat buyer's interests very closely to heart.

Having the BRABUS Shadow 900 XC Cross Cabin take the win in the category SUV's is a great achievement, underlining the origins of this confident and stylish performer. Fully living and breathing the BRABUS supercar DNA, the BRABUS Shadow 900 truly is the SUV of the sea and the "ultimate user-friendly superboat" with its confident "year-round fast cruising capability, incredible functionality and easy performance", in the words of the judges.

"The BRABUS Shadow 900 XC Cross Cabin is bringing out the best of both worlds, functionality and style of an Axopar fused with the strong presence of luxury, power and performance of a BRABUS product. We are so delighted that the jury has recognized what our close collaboration with the world leading supercar manufacturer is all about"

JAN-ERIK VIITALA

Founding Partner

Axopar Boats / BRABUS Marine

"I believe it is one of our greatest achievements at BRABUS Marine so far and I'm super proud of winning that price. Thank you very much to Motor Boat & Yachting for making us one of the three finalists and choosing us as a winner. [...] An absolutely magnificent boat, one of the best ones we've built so far and there is more to come."

CONSTANTIN BUSCHMANN

CEO

BRABUS GmbH

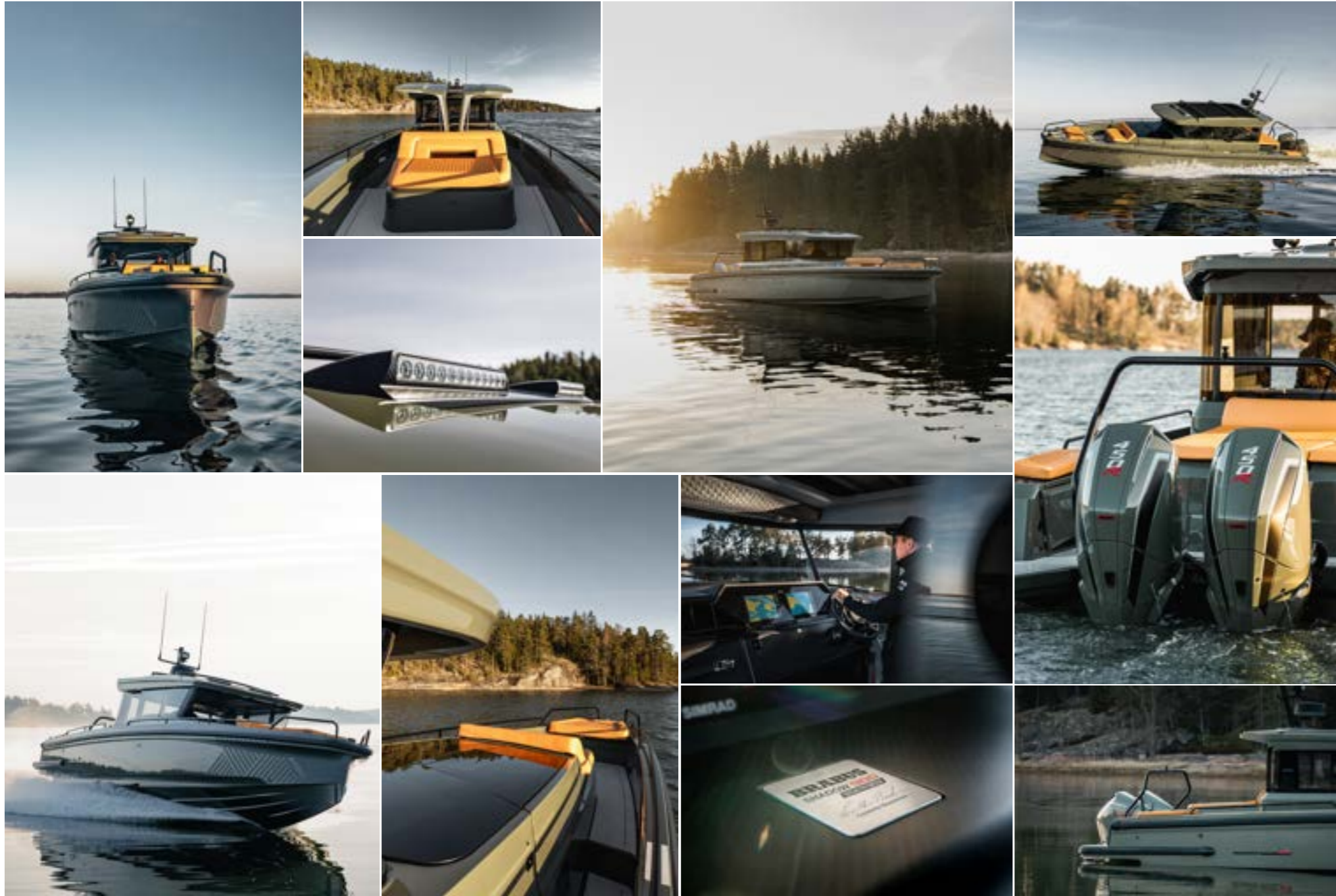
SIGNATURE EDITION



STEALTH GREEN



PICTURE PRESENTED WITH BRABUS SHADOW 900 SUN-TOP
STEALTH GREEN SIGNATURE EDITION (MODEL YEAR 2023)



THE BRABUS SHADOW 900 STEALTH GREEN SIGNATURE EDITION

Confident. Authentic. Uncompromising — The BRABUS Shadow 900 Stealth Green Signature Edition has what it takes to conquer the great outdoors and wild seas in typical BRABUS fashion.

A striking embodiment of uncompromising marine high-performance and modern outdoor lifestyle, this unmistakable Signature Edition is the newest addition to the BRABUS Shadow 900 range. With its charismatic looks and high-class functionality, it's a perfect fit for those who are ready to push the boundaries BRABUS style and make an undeniable statement of design, one of a kind luxury and individuality.

Impressing with an evocative BRABUS 1-Second-Wow design scheme, this edition is combining a premium BRABUS Stealth Green hull color with matching Signature Style graphics, a wide range of high-grade carbon elements, contrasting matte black detail work, Masterpiece and Sign of Excellence badges as well as the BRABUS Sunrise upholstery color. The confident contrasts in color and material exudes a highly luxurious, contemporary outdoor aesthetic – in this combination a most unique design transfer.

THE BRABUS SHADOW 900 STEALTH GREEN SIGNATURE EDITION

The wild side of Luxury - Available as BRABUS Shadow 900 Spyder, a fully open version, the BRABUS Shadow 900 Sun-Top, a true adventurer of the elements, and the XC Cross Cabin, an ultra-luxurious SUV of the Sea and fully enclosed Cabin cruiser.



BRABUS SHADOW 900 SUN-TOP STEALTH GREEN SIGNATURE EDITION,
MULTISTORAGE COMPARTMENT



BRABUS SHADOW 900 SPYDER STEALTH GREEN SIGNATURE EDITION,
OPEN AFT DECK OPTION



BRABUS SHADOW 900 XC CROSS CABIN STEALTH GREEN SIGNATURE EDITION,
WET BAR PACKAGE

PICTURE PRESENTING BRABUS SHADOW 900 XC CROSS CABIN
STEALTH GREEN SIGNATURE EDITION





PICTURE PRESENTING BRABUS SHADOW 900 XC CROSS CABIN
STEALTH GREEN SIGNATURE EDITION

SIGNATURE EDITION



DEEP BLUE

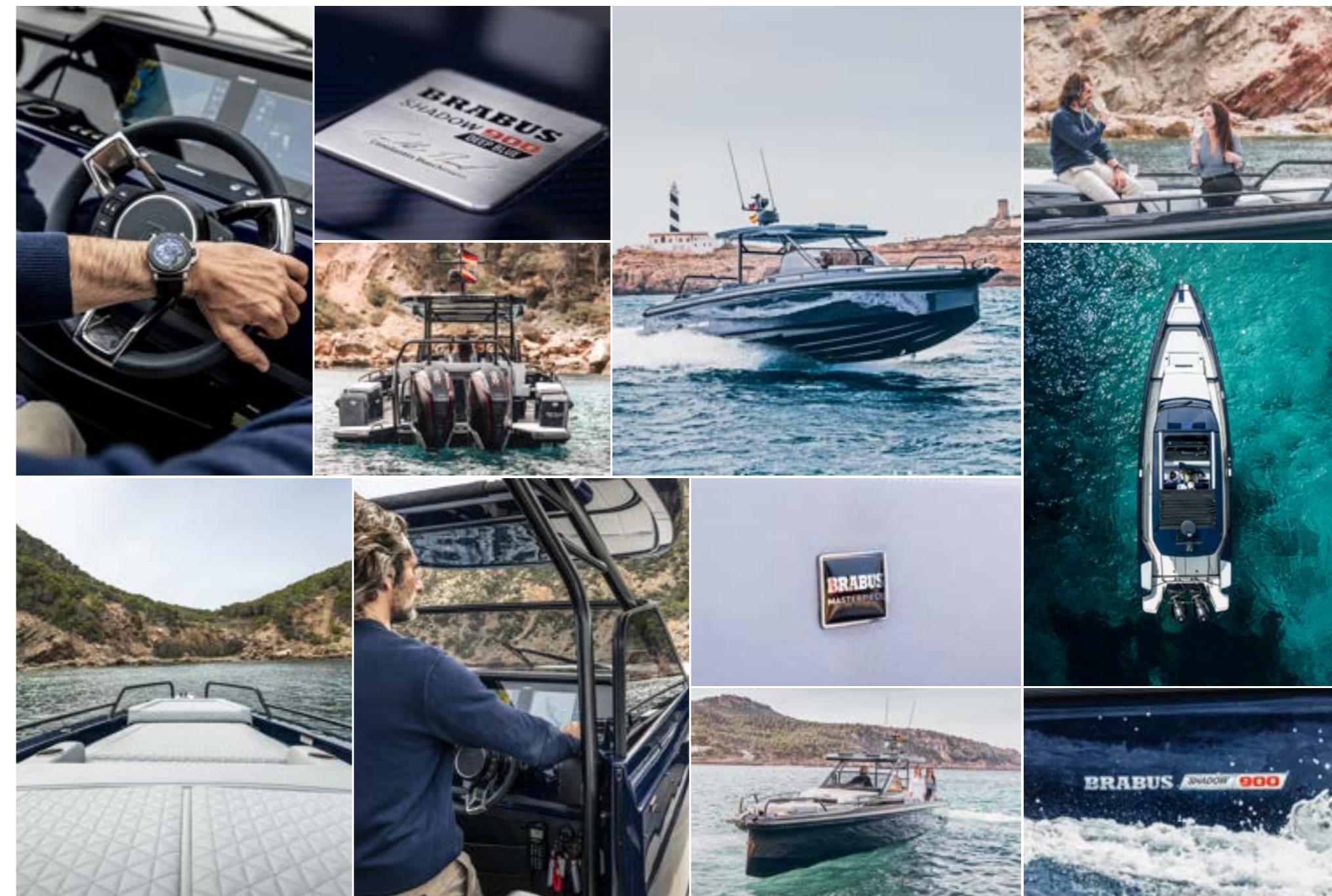


PICTURE PRESENTED WITH BRABUS SHADOW 900 XC
CROSS CABIN DEEP BLUE SIGNATURE EDITION

THE BRABUS SHADOW 900 DEEP BLUE SIGNATURE EDITION

Elegant, Exclusive, Timeless - Meet the Heart of the Ocean. Designed for those who seek to experience the magic of confident marine high-performance, the BRABUS Shadow 900 Deep Blue Signature Edition combines hallmark BRABUS go-anywhere power with steady, comfortable handling without compromise.

Following the success of the BRABUS Shadow 900 Black-Ops limited edition, the ultra-elegant Deep Blue Signature Edition turns any day on the waves into an unforgettable experience in typical BRABUS fashion. Just like the luxurious BRABUS supercars, the BRABUS Shadow 900 Deep Blue Signature Edition was developed with an extraordinary passion for detail and an unwavering desire to redefine the superlative and meet the signature One-Second-Wow-Factor that characterises all BRABUS vehicles.



THE BRABUS SHADOW 900 DEEP BLUE SIGNATURE EDITION

Timeless elegance - Coming in three superb model variants. From the fully open Spyder version for adventurous thrillseekers, to the luxurious Sun-Top version for confident performers, over to the fully enclosed Cabin cruiser, a premium SUV of the Sea, for anyone seeking unlimited performance and go-anywhere capabilities.



BRABUS SHADOW 900 SUN-TOP DEEP BLUE SIGNATURE EDITION



BRABUS SHADOW 900 SPYDER DEEP BLUE SIGANTURE EDITION



BRABUS SHADOW 900 XC CROSS CABIN DEEP BLUE SIGNATURE EDITION

PICTURE PRESENTING BRABUS SHADOW 900 SUN-TOP
DEEP BLUE SIGNATURE EDITION (MODEL YEAR 2023)



PICTURE PRESENTING BRABUS SHADOW 900 SUN-TOP
DEEP BLUE SIGNATURE EDITION W. LOUNGE OPTION



SIGNATURE EDITION



PICTURE PRESENTED WITH BRABUS SHADOW 900
XC CROSS CABIN BLACK OPS SIGNATURE EDITION

BLACK OPS

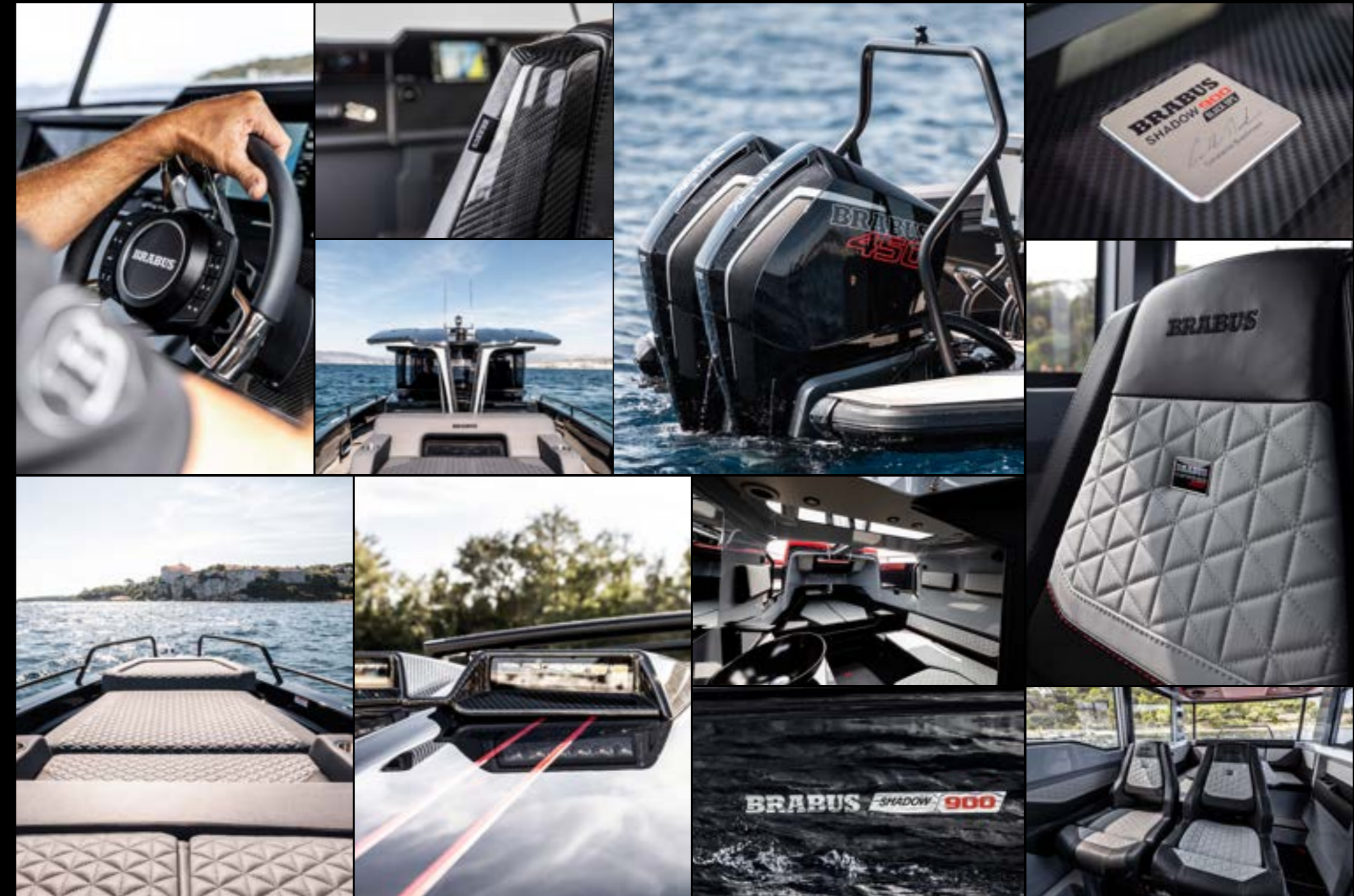


PICTURE PRESENTED WITH PREVIOUS
BRABUS SHADOW 900 XC CROSS CABIN BLACK OPS LIMITED EDITION

THE BRABUS SHADOW 900 BLACK OPS SIGNATURE EDITION

This Signature Edition is as BRABUS as it gets. With darker and even further brabusized design cues including a dark, unmistakable BRABUS Graphite Black paint job, upholstery color choices in BRABUS Graphite or BRABUS Red as well as Signature Style graphics with red Signature Stripes that run across the entire exterior design concept and are accompanied by sleek hull badges in black chrome.

The edition is hand-built with focus on precision and finish. Just the fairing, painting and polishing of the Limited-Edition version to the quality required is a highly labour-intensive, skilful and painstaking process, with no automation process, that can take up to six weeks alone to reach the required finish. Advanced design engineering and the use of high-tech, selective materials incur a superior level and lengthier period of manufacturing. As a result, every owner of a new Shadow will experience a far higher, superior level of individual touch and performance, uncommon for a boat in this size-range.



THE BRABUS SHADOW 900 BLACK OPS SIGNATURE EDITION

It is the passion and commitment to performance, the desire for perfection, the pursuit of the superlative, but also a sense for aesthetics and functionality that forms BRABUS Marine superboats.

Scandinavian design meets German engineering.



BRABUS SHADOW 900 SUN-TOP BLACK OPS SIGNATURE EDITION,
WET BAR PACKAGE



BRABUS SHADOW 900 SPYDER BLACK OPS SIGNATURE EDITION,
OPEN AFT DECK OPTION



BRABUS SHADOW 900 XC CROSS CABIN BLACK OPS SIGNATURE EDITION,
AFT-CABIN ACCOMMODATION PACKAGE

SHADOW 900







BRABUS SHADOW 900 XC CROSS CABIN
IN QUANTUM WHITE W. AFT BENCH

THE BRABUS SHADOW 900 RANGE

At BRABUS Marine we are aiming for the superlative, for ultimate luxury and breathtaking performance. The whole BRABUS Shadow 900 range is conceptualised to leave a statement and to enable you to impart your own personality onto your superboat, with a cascade of upholstery color choices, hull colors, layout options and innovations to choose from. All in line with the renowned BRABUS 1-Second-Wow principle.

Whatever you desire to genuinely expresses yourself, your fully brabusized Shadow 900 will match it. Start by choosing between the fully open Spyder model, the thrilling Sun-Top model or the ultimate SUV of the Sea, the XC Cross Cabin.



BRABUS SHADOW 900 SUN-TOP
WITH CAMO WRAP IN PLATINUM GREY W. AFT CABIN



BRABUS SHADOW 900 SPYDER
IN GLACIER BLUE W. OPEN AFT



BRABUS SHADOW 900 XC CROSS CABIN

Utility and luxury come together; this is the ultimate crossover, whether you're seeking out thrills or convenience, the BRABUS Shadow 900 XC Cross Cabin delivers performance at its very heart. Just like a well-designed high-performance 4x4 for the road, the all-weather capable, 'full-enclosed' Shadow 900 XC Cross Cabin could easily be referenced as a luxurious 'Sports Utility Vehicle' made for the sea. A true 'go anywhere' drivers boat delivering optimum comfort and capability.



THE XC CROSS CABIN MODEL

The distinctive looking BRABUS Shadow 900 XC Cross Cabin is the latest incarnation of this dynamic and highly accomplished 37-foot range of super-boats, following in the footsteps of the incredibly well-received BRABUS Shadow 900 Sun-Top and Spyder.

Endowed with true 'go-anywhere' characteristics, while at the same time offering an extremely convivial environment, with comfortable, raised seating for seven people in the cockpit that effortlessly cossets occupants in the sophisticated luxury and bespoke detailing renowned of a BRABUS.

The clean and ergonomic helm that resembles a supercar more than anything places the driver in the focus. Everything on the dashboard is close to hand, touchscreen technology with selected backlit switches and the exclusive multifunction steering wheel with finger-tip controls, make this one of the most modern looking consoles on the market.





PICTURE PRESENTED WITH BRABUS SHADOW 900
XC CROSS CABIN IN GLACIER BLUE



PICTURE PRESENTING BRABUS SHADOW 900 FRONT LOUNGE
W. GULLWING DOORS OPENED





BRABUS SHADOW 900 SUN-TOP

Extravagant, hedonistic and brilliant, welcome the BRABUS Shadow 900 Sun-Top, the comfortable passage maker. Packed with technical innovation and up to 60+ knots blistering performance at heart. It is the perfect companion for those seeking thrills as well as fast and safe passage.



THE SUN-TOP MODEL

The Shadow 900 offers adrenaline-fueled excitement, superior performance, acceleration and torque, providing an ultimate luxurious driving experience. With a bold, confident and authoritative stance, this amazing and dynamic 37ft footer is the perfect partner for you to arrive in style in whatever part of the world you are.

The Shadow 900 range offers class leading driving experience and benefits from Mercury Marine's latest dual 450R Verado XL 4.6 litre V8 FourStroke engines with Joystick Piloting for easy docking and manoeuvring. Flexible cruising speed-range in comfortable 30-40 knots and up to blistering 50 knots cruising speeds for those seeking thrills as well as fast and safe passage.

Better utilization of space includes new multi-storage solutions for adventure gear, a larger foredeck and more versatile social areas, with improved freedom of movement all around the boat. Below deck there's a significant enlarged front lounge, with Gullwing doors and also available with an optional enclosed toilet compartment.





PICTURE PRESENTING BRABUS SHADOW 900 SUN-TOP
IN PLATINUM GREY W. "FUSION" CAMO WRAP



PICTURE PRESENTING BRABUS SHADOW 900 SUN-TOP
IN PLATINUM GREY W. CAMO WRAP



PICTURE PRESENTING BRABUS SHADOW 900 SPYDER
IN PLATINUM GREY W. "FUSION" CAMO WRAP

BRABUS SHADOW 900 SPYDER

The open-air thrill-seekers, built with obsessive attention to details, the Shadow 900 Spyder offers awe inspiring performance and drop-dead BRABUS looks that will turn heads wherever it appears. It is the perfect luxury platform for a day out on the sea.



THE SPYDER MODEL

The Shadow 900 Spyder offers adrenaline-fueled excitement, mesmerizing performance, acceleration and torque, providing an ultimate luxurious driving experience. The Spyder is a first-class superyacht tender, or regatta chase boat, creating the right first impression for clients and VIP's. Only a few boats can match the visual drama and sense of excitement offered by a BRABUS Shadow 900.

Safely transiting passengers from ship-to-shore, whatever the weather, even in arduous sea conditions. The low freeboard means it's easy to step on board and with the optional boarding steps at the stern makes transferring people from boat to boat safe and comfortable.

Swathed in 'sport-pattern', cool grey and black BRABUS Fine Leather® and Dinamica with contrasting red accents and stitching, the front cabin with a 'queen size' sleeping accommodation has a sense of space and luxury more associated with a supremely comfortable lounge. Extend the lounge experience with an optional integrated infotainment unit, comprising a 42-inch flat screen 4K TV and Apple TV connectivity to mention a few of the options available.



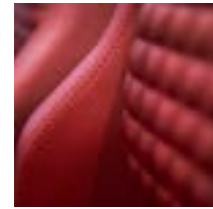


PICTURE PRESENTING BRABUS SHADOW 900
FRONT LOUNGE W. CLOSED GULLWING DOORS

SHADOW 900 CUSTOMIZING OPTIONS

Take pleasure in customizing your boat from a selection of high quality gelcoat colours for your Shadow 900, and let your boat truly express your personality. Choose from our modern and contemporary colours; Platinum Grey, Quantum White or Glacier Blue and finish your customization by selecting one of the vibrant fabric colours; BRABUS Red, BRABUS Platinum, BRABUS Graphite, BRABUS Sunrise or BRABUS Ice or BRABUS Merlot. Furthermore, for the Shadow 900 XC you can choose between a sophisticated BRABUS Fine Leather light grey mono-tone or confident BRABUS Fine Leather black/light grey dual-tone, accentuated with either red or black stitching and piping.

UPHOLSTERY



BRABUS RED



BRABUS PLATINUM



BRABUS GRAPHITE

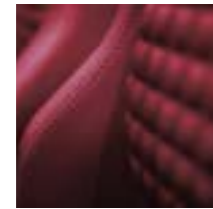


BRABUS SUNRISE

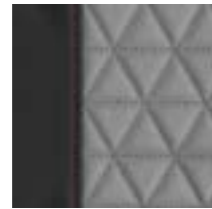
UPHOLSTERY INTERIOR (XC)



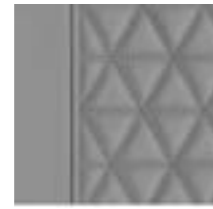
BRABUS ICE



BRABUS MERLOT



BRABUS FINE LEATHER
BLACK/LIGHT GREY

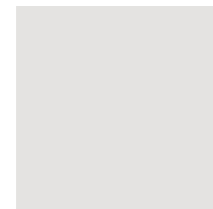


BRABUS FINE LEATHER
LIGHT GREY

HULL COLOURS



PLATINUM GREY



WHITE GREY



GLACIER BLUE



CAMO WRAP*

*Camo wrap can be opted for all hull colours

STANDARD OPEN AFT
PLATINUM GREY
MERLOT



AFT BENCH
PLATINUM GREY CAMO WRAP
ICE



WET BAR
GLACIER BLUE CAMO WRAP
GRAPHITE



AFT CABIN
QUANTUM WHITE CAMO WRAP
PLATINUM



MULTISTORAGE COMPARTMENT
QUANTUM WHITE
SUNRISE



BRABUS SHADOW 900 LAYOUT VIEW



SHADOW 900 SPYDER
STANDARD OPEN AFT



SHADOW 900 SPYDER
MULTI STORAGE



SHADOW 900 SUN-TOP
WET BAR



SHADOW 900 XC CROSS CABIN
AFT CABIN & ENCLOSED TOILET



SHADOW 900 XC CROSS CABIN
AFT CABIN



SHADOW 900 SPECIFICATIONS

SPYDER

Overall Length (incl. Engine)	11.73 m / 38ft 5in
Beam	3.35 m / 9ft 8in
Draft to props	0,85 m / 2ft 9in
Weight (excl. Engine)	4100 kg / 9039 lbs
Fuel Capacity	730 litres / 192 gal
Construction	GRP
Classification	B:10 - C:12
Max. speed range	+60 knots
Outboard engines	2x 450 hp
Hull design	Twin stepped 20 degree V "Sharp entry hull"
Accommodation /Berth*	2 persons (+ 2*)

* BRABUS Aft Cabin option

SUN-TOP

Overall Length (incl. Engine)	11.73 m / 38ft 5in
Beam	3.35 m / 9ft 8in
Draft to props	0,85 m / 2ft 9in
Weight (excl. Engine)	4300 kg / 9480 lbs
Fuel Capacity	730 litres / 192 gal
Construction	GRP
Classification	B:10 - C:12
Max. speed range	+60 knots
Outboard engines	2x 450 hp
Hull design	Twin stepped 20 degree V "Sharp entry hull"
Accommodation /Berth*	2 persons (+ 2*)

* BRABUS Aft Cabin option

XC CROSS CABIN

Overall Length (incl. Engine)	11.73 m / 38ft 5in
Beam	3.35 m / 9ft 8in
Draft to props	0,85 m / 2ft 9in
Weight (excl. Engine)	4500 kg / 9920 lbs
Fuel Capacity	730 litres / 192 gal
Construction	GRP
Classification	B:10 - C:12
Max. speed range	+55 knots
Outboard engines	2x 450 hp
Hull design	Twin stepped 20 degree V "Sharp entry hull"
Accommodation /Berth*	2 persons (+ 2*)

* BRABUS Aft Cabin option

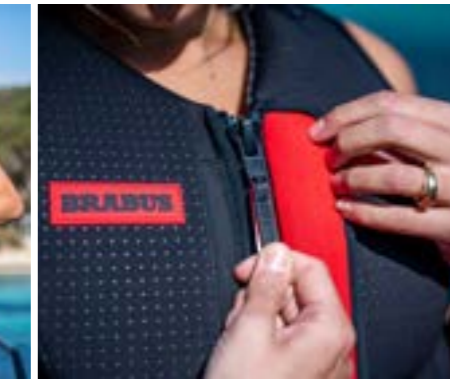
Specifications may be changed without prior notice. Performance may vary due to equipment, weather and load conditions.

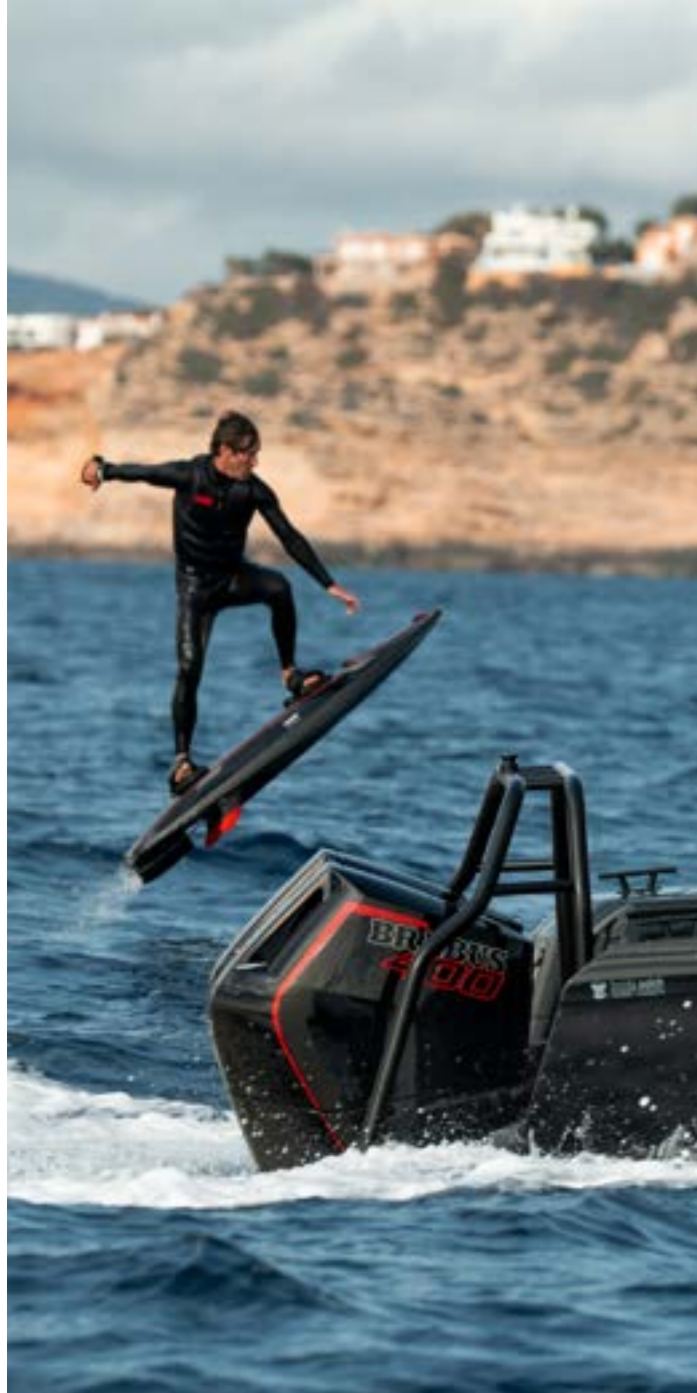
BRABUS X JOBE

With a shared passion for creating premium products with unparalleled attention to detail and innovation, BRABUS and JOBE have partnered up throughout the years, to create a watersport collection unlike any other.

The fourth limited edition of the BRABUS x JOBE Shadow Collection is here to get you out on the water and experience it in the best way possible. Offering next-level style and safety standards, an unforgettable adventure on the water awaits!

jobsports.com/brabusxjobe





BRABUS X AWAKE BRABUSIZE THE WAVES.

Developed to show you the world of water sports at its very best, the BRABUS Shadow Jetboard is a unique design and performance innovation as well as the ultimate tool to take your BRABUS Marine experience to the next level. Imagine the rush of pure adrenaline, the power of the fully electric propulsion system and the feeling of unrestricted freedom as you effortlessly glide across the water.

It's yours for the taking. Dare to dream. Dare to defy. Dare to experience the extraordinary. Brabusize the waves with the BRABUS x Awake Shadow Jetboard. Production is limited to 77 units worldwide.

brabus.com/en-int/coops/brabus-x-awake.html



BRABUS
MARINE

REDEFINING
PERFORMANCE DAY BOATING

brabusmarine.com