

# MAKE YOUR STORY AN EPIC

*with the Ultimate Overlanding Expedition Vehicle*



2025



# EPIC



THE 2025 EPIC IS AN EXPERTLY  
DESIGNED, INNOVATIVE PRODUCTION  
OVERLAND RIG BUILT FOR RUGGED YET  
COMFORTABLE **GLOBAL EXPEDITIONS.**



Informed by decades of world travel, the EPIC is engineered to confidently navigate any terrain and withstand all elements around the globe. The **Kenworth™ chassis with GXV's proprietary 4x4 system** offers a powerful and capable drivetrain alongside a 200 gallon fuel tank– delivering top tier performance and up to 1800 miles of range.

Whether you are seeking to travel the globe, live off-grid or explore the US with absolute comfort and capability, the elevated 2025 EPIC delivers **rugged luxury** that allows you to live free, explore endlessly and tell better stories.

## POWERFUL & RESPONSIVE

Now equipped with an upgraded engine performance tuner, the 2025 EPIC boasts **more horsepower and torque than ever.**

## EXPLORE THE UNKNOWN

The elevated 2025 EPIC is built to go anywhere and navigate every obstacle. The all-new Power Share System allows the house batteries to maintain trickle charge of the truck batteries **and** transfer power to the truck batteries in case of emergency.

The EPIC Power Share System alongside the EPIC's **upgraded, 20,000 pound ComeUp Winch** deliver peace of mind beyond the edges of the map.



## LEGENDARY DRIVER CONFIDENCE

The all-new **360° Camera System** and ability to select **Constant Rear Camera View** while driving empowers the EPIC to pursue adventure in confidence. Also new in 2025:

**Upgraded, Custom Center Console** including:

- Kenwood Display with Wireless Apple CarPlay, Android Auto and Navigation
- Hertz Audio Speakers
- Hands-Free Microphone
- Induction Charger
- USB Chargers for Driver and Passenger

**Luxury scheel-mann® USA Driver & Passenger Seats** featuring:

- Air-Ride
- Heating & Cooling Controls
- Adjustable Lumbar Support
- New Storage Cabinets behind Driver and Passenger Seats

## OFF-GRID, NOT OFFLINE

The 2025 EPIC is Starlink Ready with **Pre-Installed Power & Network cables**, along with an easy to use roof-mounted Starlink Mini Mounting bracket.

## WORLD-CLASS RUGGED LUXURY

The 2025 EPIC's world-class build delivers an off-road ready, rugged exterior and no-compromises, luxurious interior.

### NEW IN 2025:

- **Upgraded Bridgestone L315 Tires**
- **New Exterior Color:** Slate Grey
- **New Interior Colorways** with elevated finishes & leather upholstery.
- **Increased Freshwater Capacity** providing 120 gallons of freshwater onboard.
- **New Bi-Facial Solar Panels** allow more efficient solar power.
- **New nVader Rear-Mounted Panel** to mount accessories.
- **New Induction Chargers** throughout the Kitchen and Bedside Cabinets.
- **Additional Storage** optimized under both Dinette seats.





# 2025 GXV EPIC SPECIFICATIONS

## KENWORTH™ CHASSIS

- Kenworth K370 extended cab chassis
- 6.7L Cummins® Turbo Diesel, 660 ft lbs
- GXV exclusive 4X4 system with:
  - High and low range transfer case
  - 50:1 crawl ratio
  - Locking front and rear differential
- Fuel capacity 200 gallons
- scheel-mann® seats with air ride
- Kenworth Sound System with Apple CarPlay/Android Auto

## EXTERIOR FEATURES

- Overall Length: 30' 2"
- Overall Height: 12' 5"
- Body Width: 8' 0"
- GXV composite sandwich panel construction, 60mm
- Entry door with 3-point stainless steel lock system
- Pass through compartment with slider tray, 800lb capacity
- High-pressure spray-on ArmorThane® coating
- Aluminum Electric Entry Step
- Aluminum forged wheels w/ 44" Multi-Purpose Tires
- 20,000 lb. ComeUp winch
- 16' powered awning with LED lighting
- Compressed air ports on driver and passenger sides
- Armor Vision dual pane glass windows with bug screens and black-out shades

## INTERIOR

- Premium Queen size bed with large skylight
- Front dinette seating for 4, converts to a full bed
- Built in washer/dryer combo
- 15K BTU Truma Aventa Comfort Ultra Efficient AC unit
- Aqua Hot 450D 650k BTU heat system w/4 air handlers
- Vitrifrigo Marine-Grade 2 Door Refrigerator/Freezer
- Stainless steel convection oven, microwave, and air fryer

## GALLEY

- 1600W dual burner induction cooktop
- Large stainless steel kitchen sink
- Guzzle H2O® water purification system

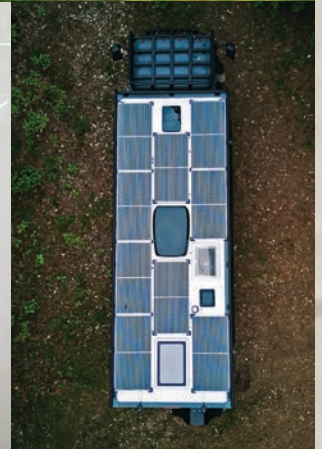
## BATH

- Extra Large Wet Bath
- 120 gal fresh water, 40 gal grey water
- Flushable cassette toilet
- Deluxe sky light in bath

## ENERGY SYSTEM

- 18 kWh 24V Mastervolt Power™ System
- 4500W heavy duty, high efficiency inverter
- 1980W rated solar panels<sup>1</sup>
- Chassis alternator charges Mastervolt Power™ System
- Onan QD Quiet 6000W diesel generator with auto start

\*This label represents an example feature set of EPIC model and chassis. This particular vehicle may have different features due to supply chain changes, manufacturer specification changes, and/or other ongoing quality improvement initiatives. Pricing is for a limited time and subject to change. Storyteller Overland reserves the right to change individual vehicle specifications at any time. <sup>1</sup>Solar efficiency varies



See-Thru Pricing:

**\$799,784**

**EXPLORE MODEL**

**StorytellerOverland.com/GXV-Epic**