

QUALITY

Winnebago RVs are designed and built around you, with superior craftsmanship, advanced manufacturing technologies and steel-focused construction to enhance safety and reliability.

INNOVATION

From groundbreaking RVs to game-changing features to the spacious floorplans made possible by our SmartSpace™ design, our heritage is unrivaled for continuous industry firsts in vehicle technology and design.

SERVICE

Our carefully chosen dealers are supported by factory training and our advanced parts supply system, while owners benefit from excellent real-world customer support as well as 24/7 access to online technical information.

BELONGING

Winnebago owners are a connected community – some of the friendliest, most knowledgeable and welcoming RVers you'll find anywhere.



©2023 Winnebago Printed in USA 01/24

HIKE 1000



Adventure To Go – Anywhere.

Designed for outdoor adventure, the rugged award-winning HIKE 100 is light enough to be towed by a smaller SUV, has plenty of room for all your gear, and is loaded with features that make it easy to stay off-grid during extended-season adventures.

Rugged, Durable and Ready to Go

Built To Haul
 The patented exoskeleton accepts Thule® accessories for carrying kayaks or other gear, while the 2-inch receiver accommodates your favorite bike rack. Some floorplans even provide up to 40 cubic feet of easily accessible indoor storage.

Take It Outside
 Equipped with a Premium Suspension Upgrade: BAL® Independent Suspension with Dexter® TORFLEX® torsion stub axles and standard 16" Goodyear® Wrangler off-road tires, so it handles more rugged terrain.

Extended-Season Ready
 The radiant foil barrier in the fully walkable roof blocks UV rays to keep you cool in summer and help prevent heat loss in winter, while the holding tanks in the fully enclosed underbelly feature 12-volt pad heaters to protect against freezing.

Designed For Easy Towing
 Its low dry weight means the HIKE 100 is towable by a wide range of vehicles, and the narrow body offers better rear visibility, even without extended side mirrors.

Stay Out Longer
 Longer stays are no problem, thanks to standard features like the 200-watt solar panel with 30-amp controller, prep for an additional solar panel, 31-gallon freshwater tank and 6-gallon water heater.





Floorplan Shown: 1316FB



Fully Capable. Wonderfully Comfortable.

Galley

The full galley includes an induction cooktop — portable, so you can take it outside — plus a 1.1 cu. ft. microwave, sink, and 3.1 cu. ft. compressor-driven refrigerator.

Sleeping Arrangements

The HIKE 100 is available in five floorplans and a variety of sleeping configurations accommodating up to 4 adults.

Wet Bath

The wet bath features a cassette-style toilet and full shower with power vent, and can also serve as a gear drying area.

Full-Height Ceiling

No more stooping: the HIKE 100 ceiling is a full 6'5" throughout — even in the bath.

TV/Bluetooth

The portable JBL® Bluetooth® speaker, TV prep and Wi-Fi prep can transform the living area into your personal theater, while the wireless charger keeps devices ready to go.

Premium Materials

Strong, lightweight and quiet, the 2" fiberglass sidewalls with Azdel composite panels and TransCore™ fully composite flooring provide outstanding durability and weather protection.





**Make Yourself
at Home in the
Great Outdoors.**



Exterior Living Space

Together with the powered patio awning, the batwing awning expands outdoor living space to nearly 200 square feet on 3 sides and has drop down panels to create an exterior shower or changing room.



Wash Station

The handy exterior wash station includes hot and cold water and a hose-mounted sprayer, making it easy to rinse off the day's dust — or enjoy an outdoor shower when conditions are right.



Exterior Kitchen/Storage

Cook out with the portable induction stove, or tap into the quick-connect LP fitting to fire up the grill. Some floorplans include a 2 cu.ft. Truma portable cooler in the exterior rear kitchen, and all include dual powder-coated fender gear storage compartments to haul your exterior kitchen supplies or gear.

WINNEBAGO

HIKE 100 / Specifications

WEIGHTS & MEASURES	1316SB	1316FB	1316TB	1316DB	1316MB
Exterior Length	15'11"	15'11"	15'11"	15'11"	15'11"
Exterior Height ¹	9'11"	9'11"	9'11"	9'11"	9'11"
Exterior Width ²	8'1"	8'1"	8'1"	8'1"	8'1"
Interior Height	6'5"	6'5"	6'5"	6'5"	6'5"
GVWR (lbs.)	4,200	4,200	4,200	4,200	4,200
Axles (lbs.)	1 @ 4,000	1 @ 4,000	1 @ 4,000	1 @ 4,000	1 @ 4,000
Dry Weight (lbs.)	3,284	3,178	3,122	3,170	3,156
Dry Hitch Weight (lbs.)	462	546	576	536	566
Hitch Height	28"	28"	28"	28"	28"
Freshwater Tank Capacity ³ (gal.)	31	31	31	31	31
Holding Tank Capacity – Black ³ (gal.)	4.75	4.75	4.75	4.75	4.75
Holding Tank Capacity – Gray ³ (gal.)	25	25	25	25	25
Water Heater Capacity (gal.)	6	6	6	6	6
LP Capacity ⁴ (lbs.)	20	20	20	20	20
Furnace (BTU)	18,000	18,000	18,000	18,000	18,000
Awning Length	10'	10'	10'	10'	10'
Tire Size	225/75R16E	225/75R16E	225/75R16E	225/75R16E	225/75R16E
Sleeps ⁵	4	3	3	3	2

* 7' box , 8'1" with nerf bars

Interior

MOLLE panel (Not applicable on 1316MB)
Flip-down table (Only applicable on 1316SB)
TransCore™ fully composite flooring
JBL® portable Bluetooth® speaker
Interior TV prep
Folding table (Only applicable on 1316TB, 1316SB, and 1316MB)
Designated wardrobe

Galley

1.1 cubic ft. convection microwave
3.3 cubic ft. 12-volt refrigerator
Undermount single bowl stainless steel sink with cover
Portable induction cooktop
Pull-out countertop extension
Contemporary cabinet style

Bath

Wet bath with power vent
Integrated gear drying racks
Cassette toilet
Cubby for dry storage

Bedroom

Versatile sleeping arrangements
Sleeps up to 4 adults depending on the floorplan

Exterior

NXG engineered frame
2" thick FILON® MAX fiberglass sidewalls with Azdel Onboard® composite panels
Fully walkable roof
Side-mount ladder
Weather proof junction box
Premium Suspension Upgrade: BAL® Independent Suspension with Dexter® TorFlex® torsion stub axles
Goodyear® Wrangler® 16" off-road tires
Aluminum wheel assemblies
Goodyear Wrangler 16" spare tire
Powered patio awning with LED lighting
Rear dual door opening 60" x 60" with screens (Only applicable on 1316SB)
Manual rear and off-camp side batwing awning with drop-down panels for exterior shower
Designated outdoor shower
Power tongue jack
Power stabilization jacks

All LED exterior lighting with reverse lights integrated into brake lights
Fully enclosed underbelly with radiant foil insulation
Powder coated roof exoskeleton
Powder coated fender gear boxes
2" accessory receiver hitch with 350 lbs. capacity
Lower nerf bars integrated into the frame
Exterior patio side LP quick connect
Thick core slam latch baggage doors
Outdoor kitchen (Only applicable on 1316FB and 1316DB)
Portable Truma® cooler (Only applicable on 1316FB and 1316DB)
Protective metal front and side brush guard
Quick connect spray port
Camp side TV prep
Furrion side-mount camera prep
Furrion back-up camera prep

Heating & Cooling System

6-gallon gas/electric/DSI water heater
18,000 BTU LP furnace
13,500 low-profile roof A/C
CSA vents
20lb. LP tank

Electrical System

200-watt solar panel with 30-amp charge controller and resettable breaker
Side-mount solar prep for additional panel
Inverter prep
Winnebago all-in-one control panel
12-volt tank pad heaters with interior switch
USB/ USBC charge ports
Wi-Fi Prep integrated into King® Omni Antenna
Wireless cellphone charger
Tire Pressure Monitoring System prep

Plumbing System

6-gallon gas/electric/ DSI water heater
31-gallon freshwater tank
4.75-gallon cassette toilet
25-gallon gray tank

Warranty

See your dealer for complete warranty information.

FOOTNOTES

- The height of each model is measured to the top of the tallest standard feature and is based on the curb weight of a typically equipped unit. The actual height of our vehicle may vary by several inches depending on chassis or equipment variations. Please contact your dealer for further information.
- Floorplans feature a wide-body design – over 96-inches. In making your purchase decision, you should be aware that some states restrict access on some or all state roads to 96-inches in body width. Before making your purchase decision, you should confirm the road usage laws in the states of interest to you.
- Capacities are based on measurements prior to tank installation. Slight capacity variations can result due to installation applications.
- Capacities shown are tank manufacturer's listed water capacity (W.C.). Actual filled LP capacity is 80% of listing due to overfilling prevention device on tank.
- Sleeping capacity is the maximum based on a specific floorplan.

Because features, specification, equipment, and options may vary from those highlighted here, the buyer is responsible for confirming with the dealer the features, specifications, equipment, and options included in their specific vehicle.
In addition, Winnebago's program of continuous product improvement may result in changes to vehicle specifications, equipment, model availability, and price without notice.

DECOR

Everglade



Fabric

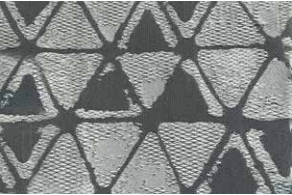


Wall Board



Cabinetry

Accent



Bedsread

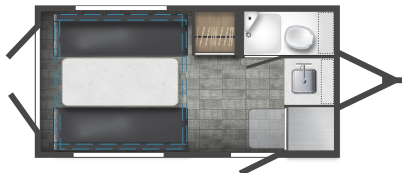


Countertop



Flooring

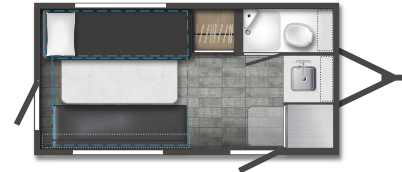
FLOORPLANS



1316SB



1316FB



1316TB



1316DB



1316MB

Dotted lines denote overhead storage area. Blue dashed lines denote sleeping areas. Floorplans are representations only and are subject to change. Please contact a certified Winnebago dealer for more information.

EXTERIORS



White