



CHAPARRAL



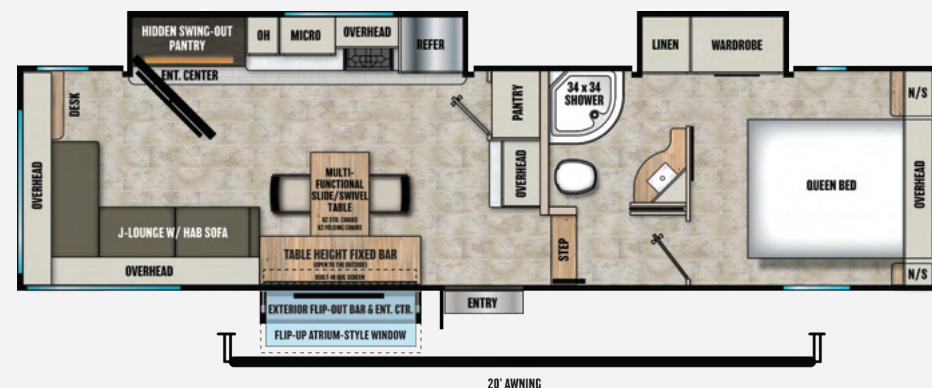
LEADER TO THE GREAT OUTDOORS



218SE NEW **LITE 5TH WHEEL**
LENGTH 29'1" | WIDTH 96" | HEIGHT 131.5" | UVW 7365 LB | GVWR 8500 LB | HITCH 1144 LB
CCC 1135 LB | AWNING 20' | FRESH 40 GAL | GRAY 33 GAL | BLACK 33 GAL



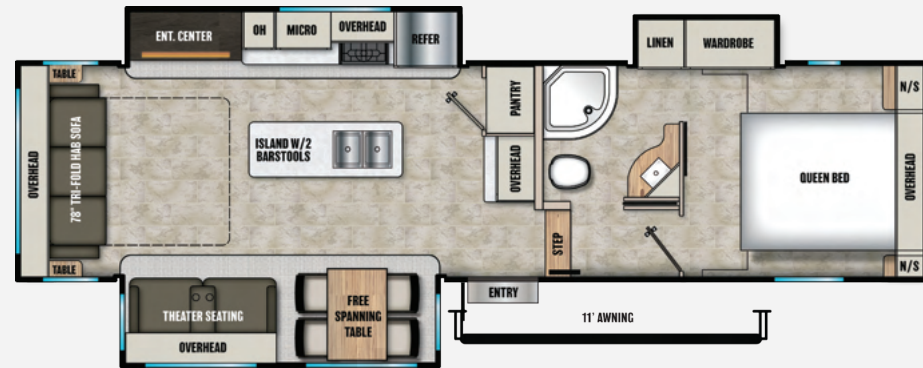
254RLS **LITE 5TH WHEEL**
LENGTH 30'9" | WIDTH 96" | HEIGHT 12' | UVW 7511 LB | GVWR 9800 LB | HITCH 1388 LB
CCC 2289 LB | AWNING 20' | FRESH 40 GAL | GRAY 33 GAL | BLACK 33 GAL



27BAR NEW **LITE 5TH WHEEL**
LENGTH 34'2" | WIDTH 96" | HEIGHT 12' | UVW 8507 LB | GVWR 11000 LB | HITCH 1521 LB
CCC 2493 LB | AWNING 20' | FRESH 40 GAL | GRAY 33 GAL | BLACK 33 GAL



30BHS **LITE 5TH WHEEL**
LENGTH 37' | WIDTH 96" | HEIGHT 12' | UVW 9535 LB | GVWR 11500 LB | HITCH 1553 LB
CCC 1965 LB | AWNING 15' | FRESH 40 GAL | GRAY 66 GAL | BLACK 33 GAL



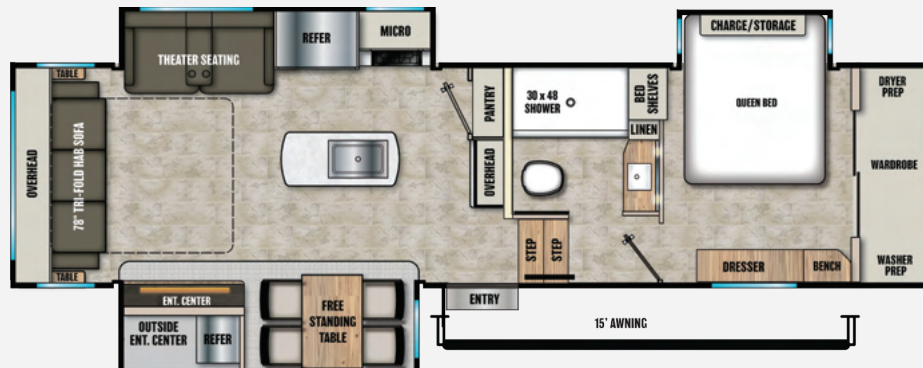
30RLS **LITE 5TH WHEEL**
LENGTH 34'2" | WIDTH 96" | HEIGHT 12' | UVW 8980 LB | GVWR 11000 LB | HITCH 1445 LB
CCC 2020 LB | AWNING 11' | FRESH 40 GAL | GRAY 66 GAL | BLACK 33 GAL



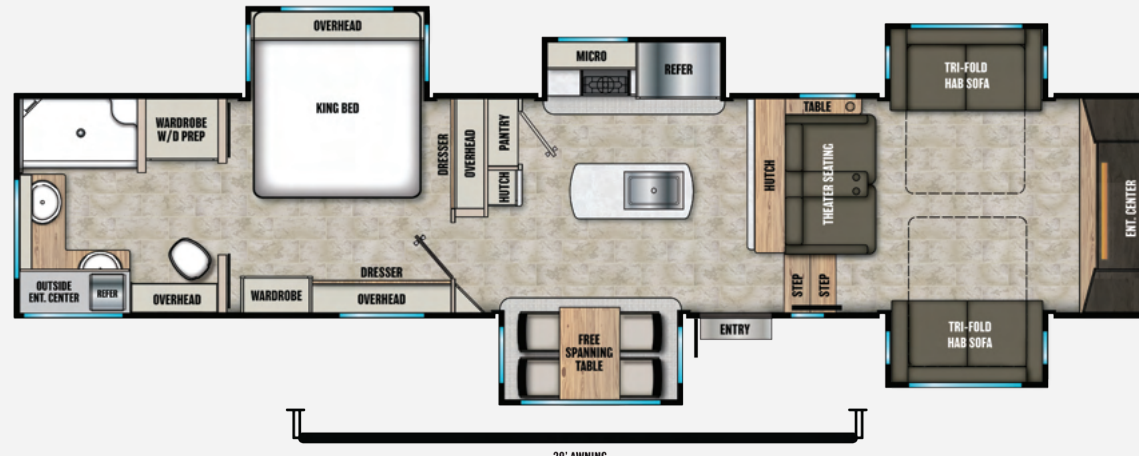
31BH NEW **LITE 5TH WHEEL**
LENGTH 37'3" | WIDTH 96" | HEIGHT 12'2" | UVW 8802 LB | GVWR 11000 LB | HITCH 1627 LB
CCC 2198 LB | AWNING 16' | FRESH 40 GAL | GRAY 66 GAL | BLACK 33 GAL



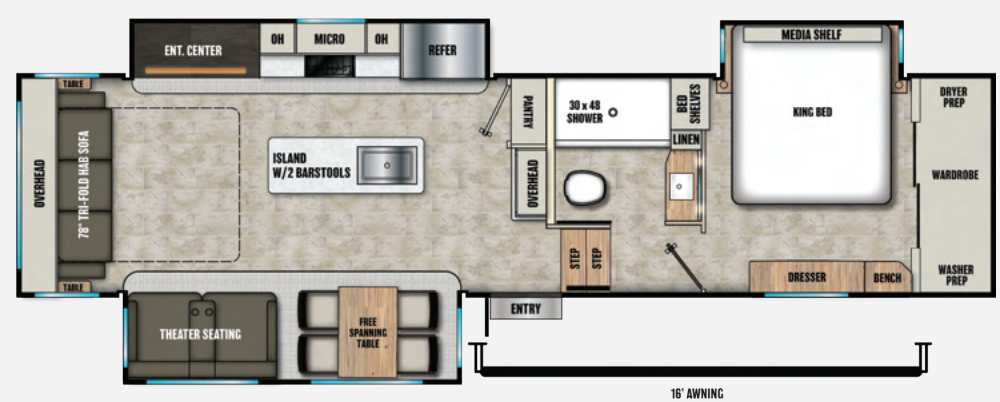
368TBH **LITE 5TH WHEEL**
LENGTH 42' | WIDTH 96" | HEIGHT 12'2" | UVW 9849 LB | GVWR 12500 LB | HITCH 1974 LB
CCC 2651 LB | AWNING 18' | FRESH 40 GAL | GRAY 99 GAL | BLACK 66 GAL



298RLS **MID-PROFILE 5TH WHEEL**
LENGTH 34'8" | WIDTH 96" | HEIGHT 12'10" | UVW 9574 LB | GVWR 12000 LB | HITCH 1935 LB
CCC 2426 LB | AWNING 15' | FRESH 48 GAL | GRAY 90 GAL | BLACK 45 GAL



334FL **MID-PROFILE 5TH WHEEL**
LENGTH 42'6" | WIDTH 96" | HEIGHT 13' | UVW 12400 LB | GVWR 15000 LB | HITCH 2708 LB
CCC 2600 LB | AWNING 20' | FRESH 48 GAL | GRAY 85 GAL | BLACK 45 GAL



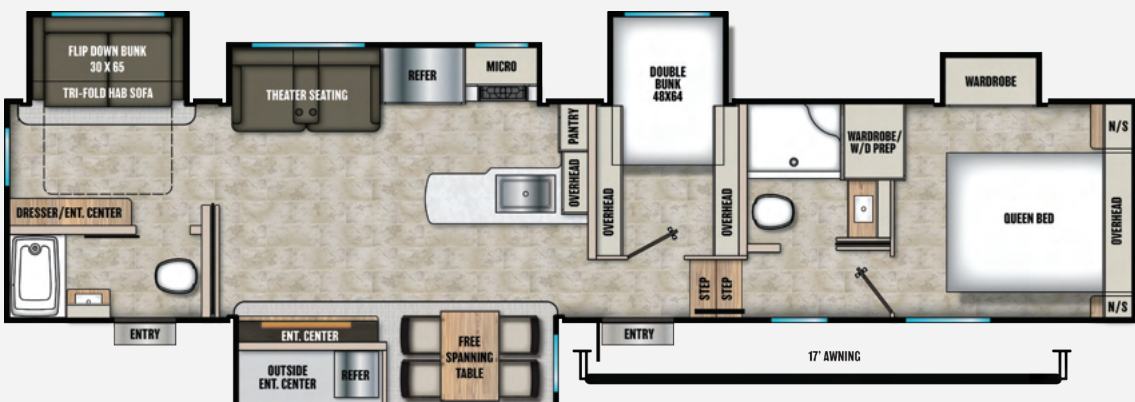
336TSIK **MID-PROFILE 5TH WHEEL**
LENGTH 37' | WIDTH 96" | HEIGHT 12'10" | UVW 10519 LB | GVWR 13500 LB | HITCH 1880 LB
CCC 2981 LB | AWNING 16' | FRESH 48 GAL | GRAY 90 GAL | BLACK 45 GAL



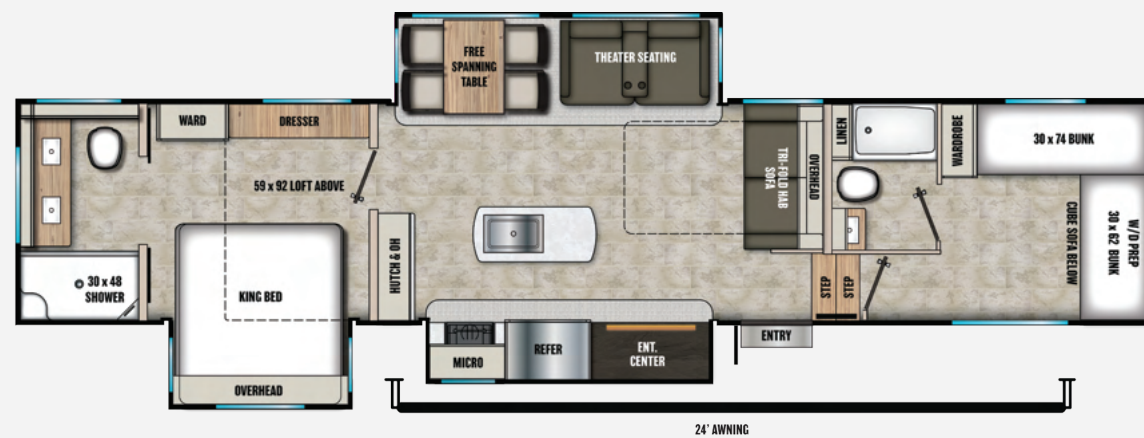
360IBL **MID-PROFILE 5TH WHEEL**
LENGTH 39'9" | WIDTH 96" | HEIGHT 12'10" | UVW 11449 LB | GVWR 14000 LB | HITCH 2100 LB
CCC 2551 LB | AWNING 18' | FRESH 48 GAL | GRAY 90 GAL | BLACK 45 GAL



367BH **MID-PROFILE 5TH WHEEL**
LENGTH 42'6" | WIDTH 96" | HEIGHT 13' | UVW 12328 LB | GVWR 15500 LB | HITCH 2194 LB
CCC 3172 LB | AWNING 15' | FRESH 48 GAL | GRAY 112 GAL | BLACK 72 GAL



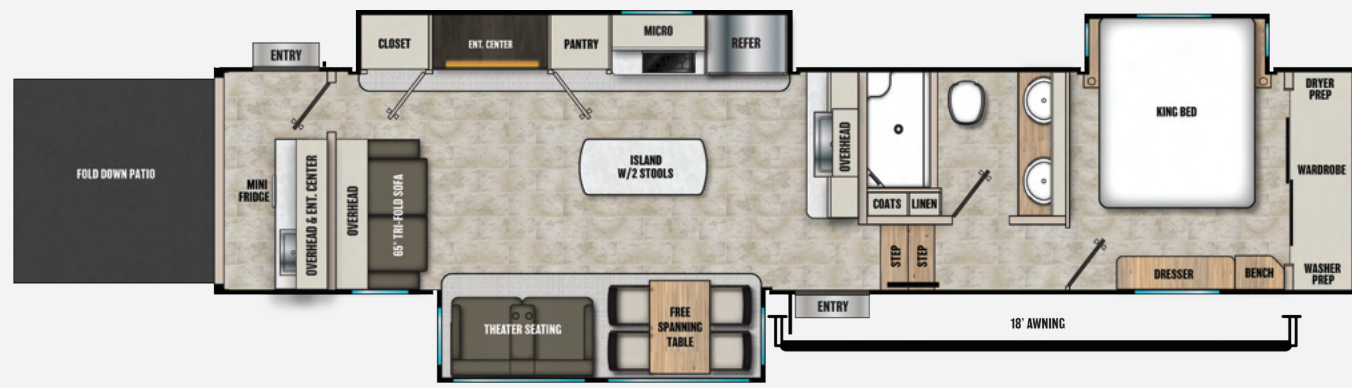
373MBRB **MID-PROFILE 5TH WHEEL**
LENGTH 42'6" | WIDTH 96" | HEIGHT 13' | UVW 13030 LB | GVWR 15000 LB | HITCH 2219 LB
CCC 1970 LB | AWNING 17' | FRESH 48 GAL | GRAY 120 GAL | BLACK 75 GAL



375BAF **MID-PROFILE 5TH WHEEL**
LENGTH 42'6" | WIDTH 96" | HEIGHT 13' | UVW 12421 LB | GVWR 14500 LB | HITCH 2152 LB
CCC 2079 LB | AWNING 24' | FRESH 48 GAL | GRAY 112 GAL | BLACK 72 GAL



381DBL **MID-PROFILE 5TH WHEEL**
LENGTH 42'6" | WIDTH 96" | HEIGHT 13' | UVW 12185 LB | GVWR 14500 LB | HITCH 2040 LB
CCC 2315 LB | AWNING 24' | FRESH 48 GAL | GRAY 112 GAL | BLACK 72 GAL



389DEK **MID-PROFILE 5TH WHEEL**
LENGTH 42'4" | WIDTH 96" | HEIGHT 13' | UVW 12721 LB | GVWR 14500 LB | HITCH 2320 LB
CCC 1779 LB | AWNING 18' | FRESH 48 GAL | GRAY 135 GAL | BLACK 45 GAL



391MBH NEW **MID-PROFILE 5TH WHEEL**
LENGTH 42'2" | WIDTH 96" | HEIGHT 13' | UVW 12445 LB | GVWR 14500 LB | HITCH 2240 LB
CCC 2055 LB | AWNING 20' | FRESH 48 GAL | GRAY 85 GAL | BLACK 45 GAL



SCAN TO VIEW MORE INFO OR VISIT:
WWW.COACHMENRV.COM/CHAPARRAL

COACHMEN

A FOREST RIVER BRAND

All information shown is believed to be accurate at the time of publication. However, during any model year, it may be necessary to make changes to the manufacturing process of the units and information shown. Your unit may differ from the information shown due to any changes in the manufacturing process and equipment. Forest River, Inc., reserves the right to make all such changes without notice, including prices, colors, combinations, materials, equipment and specifications of any model as well as the addition of new models and the discontinuance of models shown. Therefore, please consult with your Forest River dealer and confirm the availability of any materials, combinations, designs, or specifications that are meaningful to your purchase decision. © 2025 Forest River, Inc., a Berkshire Hathaway Company. All Rights Reserved.