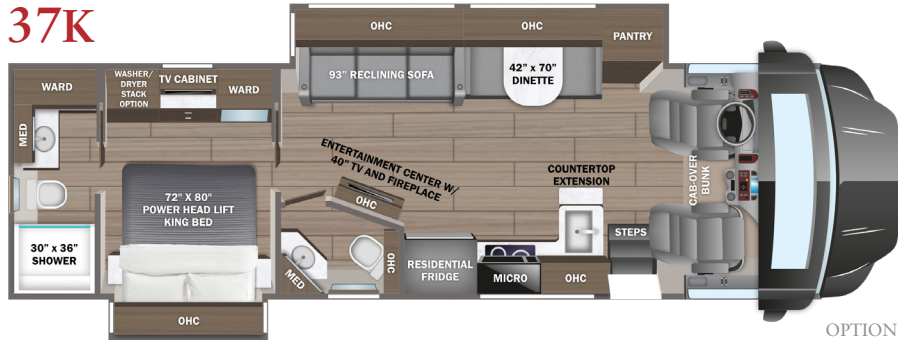


# ACCOLADE XL

## 2026 Super Class C Motorhome

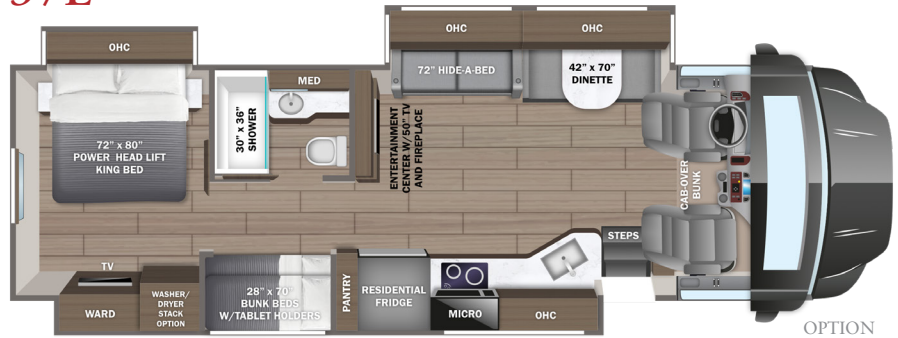


37K



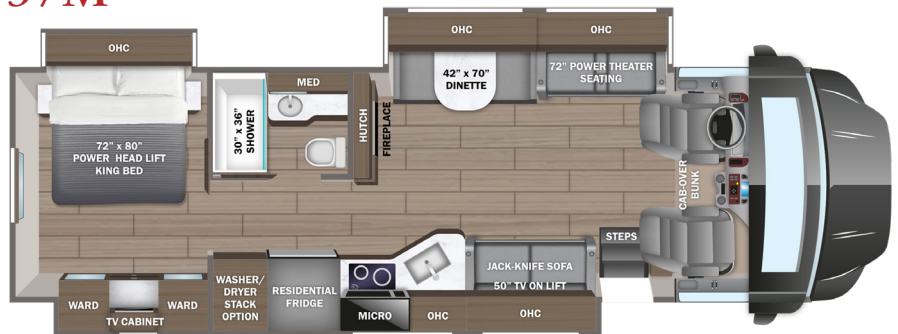
OPTION  
C

37L



OPTION  
A

37M

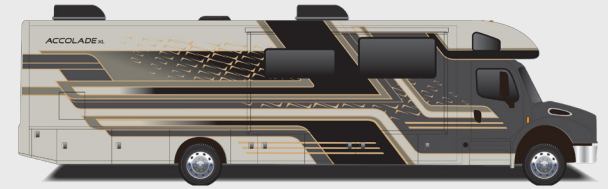


OPTIONS  
B AND C

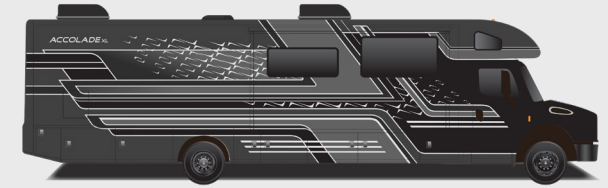
### OPTIONS



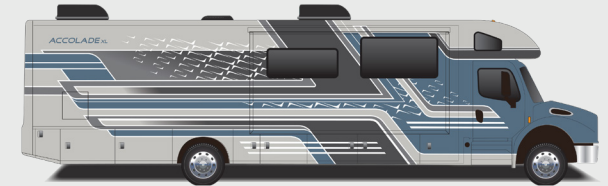
### PAINT SELECTIONS



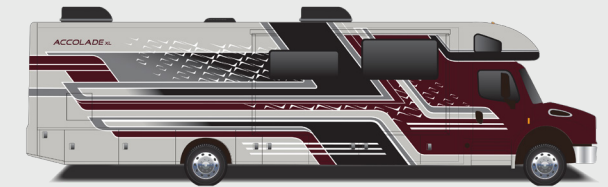
Afterglow Beige Full-Body Paint



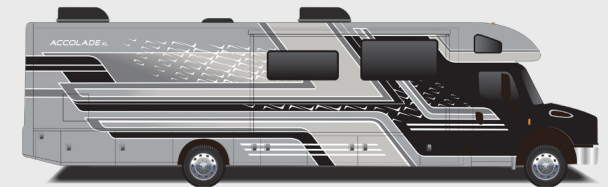
Black Beauty Full-Body Paint



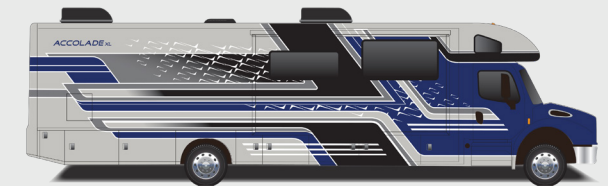
Bruin Blue Full-Body Paint



Cabernet Red Full-Body Paint



Phantom Black Full-Body Paint



Super Blue Full-Body Paint

# ACCOLADE XL

## CUSTOMER VALUE PACKAGE

E-Z Drive™ Premier: Computer-balanced driveshaft, rear air suspension, heavy-duty rear stabilizer bar, full air brakes, SACHS shocks  
Dual-pane, tinted, safety-glass windows  
Roof-mounted Girard® patio awning with LED lights  
2,000W pure sine wave inverter  
Power cord reel with 50 amp service  
Aqua-Hot® 250D hydronic water and heating system with 5 in. LED screen  
9 in. Sony® infotainment center with Apple CarPlay® and Android Auto™  
Backup and side-view cameras  
Stainless steel residential refrigerator  
1.7 cu. ft. convection microwave with air fryer function

## CHASSIS

Freightliner® S2RV front engine diesel Super-C cab chassis  
Cummins® ISB 6.7L 360 HP diesel engine with 800 ft.-lb. torque  
Allison® 3000 MH automatic transmission  
Variable geometry engine exhaust brake  
185 amp alternator  
Michelin® tires- 275/80R 22.5 14 ply  
12,000 lb. rear hitch receiver  
7-pin plug  
Dual 12V chassis batteries - 1900 CCA  
100 gal. fuel tank  
10 gal. DEF tank

## HEAT, A/C, WATER, AND POWER

Onan® 8,000W diesel generator with auto-gen start  
(4) 6V AGM (220Ah) house batteries on slideout tray  
200W solar panel with dual controller  
Dual 15,000 BTU A/C unit with heat pump on main A/C  
5,000 BTU thermostat-controlled electric fireplace  
Thetford® Sani-Con Turbo macerator system  
Exterior utility center  
Winterization drain system  
Black tank flush  
Outside shower  
12V demand water pump  
Water filtration system

## EXTERIOR

Tuff-Shell™ vacuum-bond laminated roof, floor and sidewalls for superior insulation and sound absorption  
One-piece, seamless, crowned fiberglass roof

Bead-foam insulation (R-24 max roof, R-9 max floor, R-5 max walls)  
One-piece, seamless, fiberglass front and rear caps  
Automotive-bonded panoramic window in front cap with power shade  
Premium Sikkens full-body paint  
Automatic hydraulic leveling jacks  
Alcoa® aluminum rims  
Exterior entertainment center with soundbar, LED TV mounted on swivel bracket and AM/FM radio  
Winegard® In-motion satellite dish  
Deluxe heated, remote-controlled, side-view mirrors  
Entrance door with industry's largest travel-view window  
Electric-powered entrance step  
Slideout cover awnings  
Chrome exterior baggage door handles and locks  
Carpeted, full pass-through storage compartments with lockable slam latch doors

## COCKPIT

6-way power driver and passenger seats  
Tire pressure monitoring system (TPMS)  
Auxiliary start switch  
Privacy curtains for cab area  
Color-coordinated carpeted floor mat  
Power windows and door locks  
Tilt and telescoping leather-wrapped steering wheel

## INTERIOR

Custom-molded ABS surround in cab-over area  
Overhead bunk with 750 lb. capacity and safety net with 300 lb. capacity  
Collapsible bunk ladder  
Firefly Multiplex system offers control of important coach features via LED touchscreen or mobile app  
High-intensity recessed LED ceiling lights  
Raised-panel hardwood cabinetry and stiles throughout  
Dovetail drawer construction  
Deluxe hidden cabinet hinges  
Matte-finish woodgrain porcelain floor tile with heated floor mat  
Day/night roller shades in living area  
Entegra-exclusive, easy-operation legless dinette table  
Car seat tethers on forward-facing dinette seats  
2-point lap safety belts in all designated seating locations  
50 in. LED TV in living area (40 in. on 37K)  
Samsung® sound bar  
Cable TV hookup with RG-6 coax and video selector switch  
Smoke alarm  
Carbon monoxide detector

# Standards & Options

## KITCHEN

Wood-framed kitchen window with spice cabinets  
2-burner induction cooktop with LED display  
Solid-surface kitchen countertop with large integrated stainless steel sink with sink covers

## BEDROOM

Walk-around, king-sized bed with bedspread and nightstands  
32 in. Smart LED TV in bedroom  
Large wardrobes  
Bunks with industry-exclusive 300 lb. capacity each (37L)  
Storage safe

## BATHROOM

One-piece, fiberglass shower with glass door, skylight and light  
Porcelain toilet with foot flush  
Solid-surface bathroom sink  
Powered roof vent in bathroom with wall switch

## OPTIONS

Canadian standards (CSA)  
Power theater seating (37L only)  
Freestanding table with 4 chairs (N/A 37L)  
Hide-a-bed sofa (37M only)  
Stackable washer/dryer  
Starlink satellite internet system  
Winegard® TRAV'LER® satellite dish - DIRECTV®  
Winegard® TRAV'LER® satellite dish - Dish Network®  
Canadian Shaw® TRAV'LER® satellite dish  
Blackout package (includes all-black American Racing Octane wheels, bumper, grille and mirrors)



## NO ONE OFFERS A BETTER WARRANTY

At Entegra Coach, we build our RVs to handle every adventure, then back them with our industry-leading 2+3 limited warranty. Our 2-year limited warranty has you covered for 2 camping seasons. That's 730 days. In addition, our 3-year structural limited warranty has you covered for 3 camping seasons or 1,095 days. You won't find a better limited warranty in the business, because the only strings we attach are those that deliver the ultimate in reliability. For a copy of our 2-year limited + 3-year structural limited warranty with complete terms and conditions, please contact your local Entegra Coach dealer.

It is important for your safety and enjoyment that you are aware of the weights and tow ratings of the RV you select. Consult a competent advisor for questions or advice. Whether you are new to RVing or a veteran, get a feel for the performance of your RV before heading out on the roadways. When you tow a vehicle with your RV, you must drive differently than when you drive a single vehicle. Practice hooking up, driving, backing up and braking in a safe environment or seek out professional instruction. Jayco affixes a weight label to each RV which lists weight information for that vehicle. Refer to that label to verify the vehicle will meet your requirements. Gross Vehicle Weight Rating (GVWR): The maximum permissible weight of the motorhome, including the Unloaded Vehicle Weight (UVW) plus passengers, personal items, all cargo, fluids, options and dealer-installed accessories. The GVWR is equal to or greater than the sum of the UVW and the Cargo Carrying Capacity. Gross Combined Weight Rating (GCWR): The maximum allowable combined weight of the motorhome used as a tow vehicle and the attached towed vehicle.

Floorplan	GVWR (lbs.)	GCWR (lbs.)	Wheel Base	Overall Length	Exterior Height w/ A/C & Satellite	Exterior Width	Interior Height	Fresh Water Capacity (gal.)	Grey Waste Water Capacity (gal.)	Black Waste Water Capacity (gal.)
37K	31,000	43,000	279	39' 4"	13' 4"	101	84	72	51/40	40/23
37L	31,000	43,000	279	39' 4"	13' 4"	101	84	72	50/31	50
37M	31,000	43,000	279	39' 4"	13' 4"	101	84	72	51/31	50



Part of Jayco Family of Companies

Entegra Coach, Inc., P.O. Box 460, Middlebury, IN 46540, www.entegracoach.com. See dealer for further information and prices. All information in this brochure is the latest available at the time of publication approval. Entegra Coach reserves the right to make changes and to discontinue models without notice or obligation. Photos in this brochure may show optional equipment and props for photography purposes. RVs built for sale in Canada may differ to conform to Canadian codes.



entegracoach.com/accolade-xl

LEGACY ISN'T LEFT.  
IT'S LIVED.