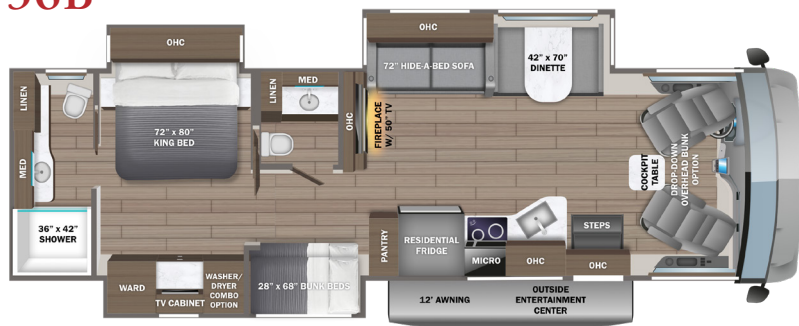


EMBLEM

2026 Diesel Super Class C Motorhome

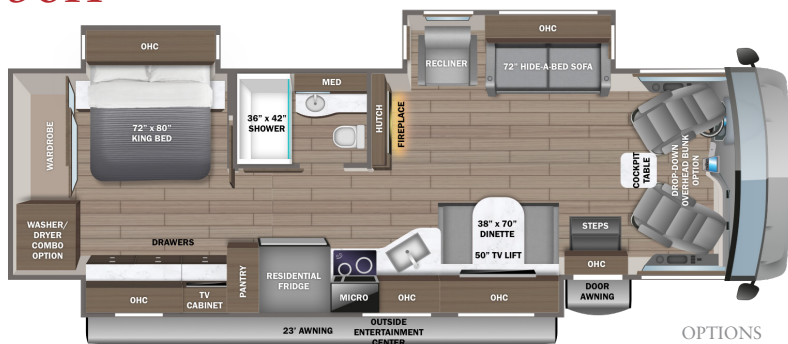


36B



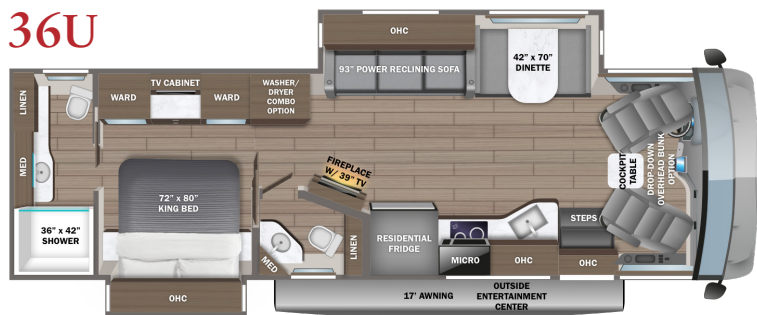
OPTION
B

36H



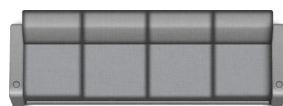
OPTIONS
A AND B

36U



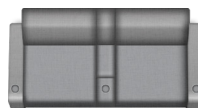
OPTIONS

A



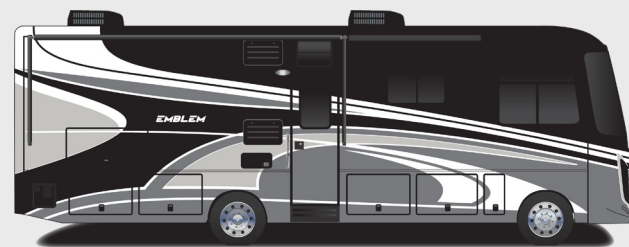
120-inch Reclining Sofa

B



72-inch Theater Sofa

PAINT SELECTIONS



Appalachia Full-Body Paint



Coastal Full-Body Paint



Ozark Full-Body Paint



Plains Full-Body Paint

EMBLEM

CUSTOMER VALUE PACKAGE

E-Z Drive™ Elite: Computer-balanced driveshaft, Safe-T-Plus steering stabilizer, Koni® shocks, variable-rate front and rear jounce bumpers, heavy-duty front and rear stabilizer bars, 22.5 in. Michelin® tires
Automatic hydraulic leveling jacks
Lippert™ 4000 series frameless bonded windows
15,000 BTU A/C unit with heat pump and second 13,500 BTU A/C unit
Exterior entertainment center with JBL® outside speakers and LED HD Smart TV mounted on swivel bracket
Electric patio awning with LED lights
Slideout cover awnings
5,500W generator with auto-gen start
2,000W inverter
50-amp electrical service
10 gal. gas/electric water heater
Sony® infotainment center with Apple® CarPlay and Android Auto™
Backup and side-view cameras
Removable driver/passenger cockpit table
LED-lit, solid-surface kitchen countertops with recessed stainless steel sink and sink covers
LED HD Smart TV in living area
Integrated day/night cassette shades

STANDARD CHASSIS EQUIPMENT

Ford® F53 chassis
GVWR - 24,000 lb.
GCWR - 30,000 lb.
7.3L V-8 335 HP engine with 468 ft.-lb. torque
6-speed automatic TorqShift® transmission with overdrive and tow haul mode
210-amp alternator
Catalytic converter theft deterrent
G-rated highway tires - 255/80R22.5
Front and rear disc, 4-wheel anti-lock brakes
5,000 lb. rear hitch receiver with dual connector and 7-pin plug
12V chassis battery
80 gal. fuel tank
120 in. panoramic windshield
Power front privacy shade with manual side privacy shades
6-way power and swivel driver/passenger seats
Soft-touch, vinyl-wrapped automotive dash
Tilt steering wheel
Cruise control
Hill start assist
Electronic stability control
Traction control
Auxiliary start

STANDARD EXTERIOR EQUIPMENT

TuffShell™ vacuum-bond laminated roof, floor and sidewalls
Bead-foam insulation (R-24 max roof, R-9 max floor, R-8 max walls)
One-piece, seamless, crowned fiberglass roof
One-piece, seamless fiberglass front and rear caps
Premium Sikkens full-body paint
Entrance door with industry's largest travel-view window
Electric-powered entrance steps
Lockable pass-through storage compartments with slam latches
Thetford® Sani-Con® Turbo macerator system
LED headlights
Third brake light
Roof ladder
Prep for satellite dish
Cable TV hookup with RG-6 coax
Winegard 2.0 Wi-Fi/4G antenna
200W solar panel with dual controller
(2) 6V AGM (220Ah) house batteries on slideout tray
Transfer switch with reverse polarity protection
24.5 gal. propane tank (83 lb.)
LP quick-connect hookup
Exterior utility center
Winterization drain system
Black tank flush
Outside shower
12V demand water pump
Water filtration system

STANDARD INTERIOR EQUIPMENT

Firefly Multiplex system - wall-mounted touchscreen and mobile app for total coach control
84 in. interior ceiling height with padded vinyl ceiling
High-intensity recessed LED ceiling lights
Vinyl plank flooring
LED-lit hardwood fascia
Hardwood cabinet doors and drawer fronts
Soft-close cabinet doors and drawers
Deluxe hidden cabinet hinges
Ball-bearing drawer guides
30,000 BTU auto-ignition ducted furnace
Electric fireplace
Entegra-exclusive, easy-operation legless dinette table
2-point lap safety belts in all designated seating locations
Car seat tethers (select floorplans)
JBL® audio system
Wood-framed kitchen window
Residential refrigerator
2-burner induction cooktop
Residential-size convection microwave oven

Standards & Options

Walk-around, king-size bed with bedspread and nightstands
USB port and wireless charging in nightstands
Under-bed storage (select models)
LED HD Smart TV in bedroom
Large wardrobes
Bunks with industry-exclusive, 300 lb. capacity each (36B)
Shower with decorative surround, glass door, skylight and light
Recessed, LED-lit, stainless steel bathroom sink
Porcelain toilet with foot flush
Powered roof vent in bathroom with wall switch
Smoke alarm
Carbon monoxide detector
Fire extinguisher

OPTIONS

Drop-down overhead bunk in cab area with 750 lb. capacity
Power theater seating (36B, 36H)
120 in. straight reclining sofa (36H)
Combination washer/dryer (36U, 36B)
Stackable washer/dryer (36H)



NO ONE OFFERS A BETTER WARRANTY

At Entegra Coach, we build our RVs to handle every adventure, then back them with our industry-leading 2+3 limited warranty. Our 2-year limited warranty has you covered for 2 camping seasons. That's 730 days. In addition, our 3-year structural limited warranty has you covered for 3 camping seasons or 1,095 days. You won't find a better limited warranty in the business, because the only strings we attach are those that deliver the ultimate in reliability. For a copy of our 2-year limited + 3-year structural limited warranty with complete terms and conditions, please contact your local Entegra Coach dealer.

It is important for your safety and enjoyment that you are aware of the weights and tow ratings of the RV you select. Consult a competent advisor for questions or advice. Whether you are new to RVing or a veteran, get a feel for the performance of your RV before heading out on the roadways. When you tow a vehicle with your RV, you must drive differently than when you drive a single vehicle. Practice hooking up, driving, backing up and braking in a safe environment or seek out professional instruction. Jayco affixes a weight label to each RV which lists weight information for that vehicle. Refer to that label to verify the vehicle will meet your requirements. Gross Vehicle Weight Rating (GVWR): The maximum permissible weight of the motorhome, including the Unloaded Vehicle Weight (UVW) plus passengers, personal items, all cargo, fluids, options and dealer-installed accessories. The GVWR is equal to or greater than the sum of the UVW and the Cargo Carrying Capacity. Gross Combined Weight Rating (GCWR): The maximum allowable combined weight of the motorhome used as a tow vehicle and the attached towed vehicle.

Floorplan	GVWR (lbs.)	GCWR (lbs.)	Wheel Base	Overall Length	Exterior Height w/ A/C & Satellite	Exterior Width	Interior Height	Fresh Water Capacity (gal.)	Grey Waste Water Capacity (gal.)	Black Waste Water Capacity (gal.)
36B	24,000	30,000	252	38' 8"	12' 10"	101	84	72	40/50	40
36H	24,000	30,000	252	38' 8"	12' 10"	101	84	72	50/41	31/41
36U	24,000	30,000	252	38' 2"	12' 10"	101	84	72	50	31/41



Part of Jayco Family of Companies

Entegra Coach, Inc., P.O. Box 460, Middlebury, IN 46540, www.entegracoach.com. See dealer for further information and prices. All information in this brochure is the latest available at the time of publication approval. Entegra Coach reserves the right to make changes and to discontinue models without notice or obligation. Photos in this brochure may show optional equipment and props for photography purposes. RVs built for sale in Canada may differ to conform to Canadian codes. ©2025 Entegra Coach, Inc. Printed in U.S.A. 2033081



entegracoach.com/emblem

LEGACY ISN'T LEFT.
IT'S LIVED.