

2026
MODEL YEAR

CLASS C DIESEL
ELEMENT

HR HOLIDAY RAMBLER
holidayrambler.com

25M | 25Q | 25T



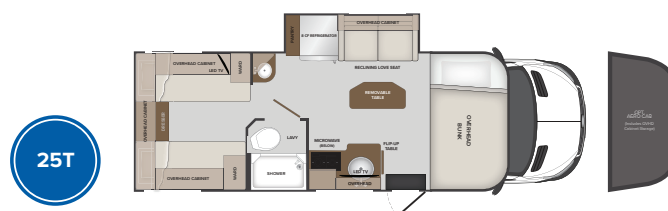
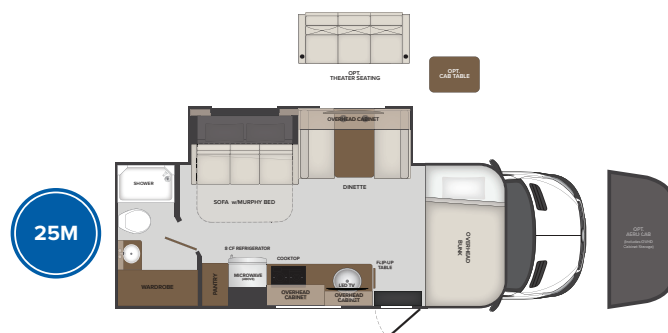
2026 ELEMENT - Aero Cap shown with Stonewash Exterior Graphics
Illustration only, actual production model may vary.

TOP FEATURES

- Mercedes Benz® Sprinter™ 3500
 - Includes Mercedes Benz Suite of Safety Features
 - See Chassis Sections of Spec Sheet for Details
- 211 HP 2.0L 4 Cylinder High Output Turbo Engine
- Includes 9-Speed Transmission
- Multiplex House Controls w/App
- Custom Maple Hardwood Interior Cabinetry
- Vacubonded Wall, Floor and Roof Construction

AVAILABLE OPTIONS

- Single Burner Induction Cooktop
- Lithium Battery Upgrade (replaces dual AGM)
- Diamond Shield Paint Protection
- Theatre Seating (*IPO Dinette N/A 25T*)
- Cab Table
- Aero Cab (*Includes OVHD Cabinet Storage*)
- Gen Delete
 - 3000W Pure Sine Inverter
 - 800AH Lithium Upgrade
 - Aux Alternator
- 330W Solar Upgrade (*Replaces STD 200W*)
- Outside Entertainment Center



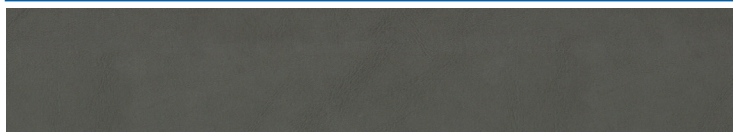
2026
MODEL YEAR

CLASS C DIESEL
ELEMENT

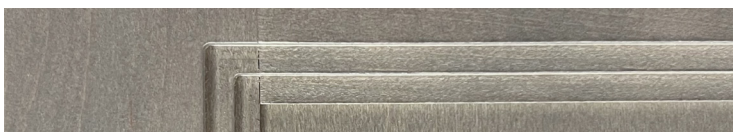
HR HOLIDAY RAMBLER
holidayrambler.com

25M | 25Q | 25T

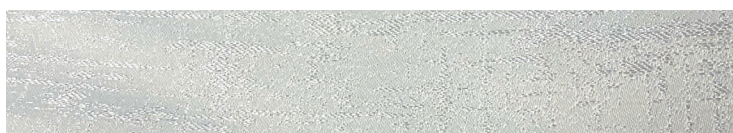
LAZY RIVER



SOFA



CABINETRY // URBAN CAFÉ



BEDDING



VALANCE



LIVING ACCENT

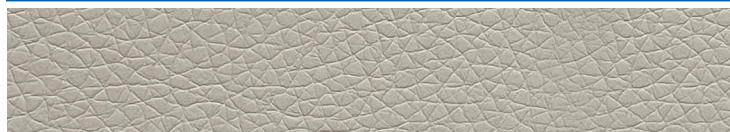


COUNTERTOP

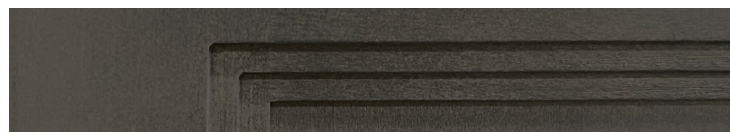


FLOORING

SANDCASTLE



SOFA



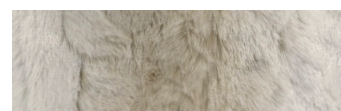
CABINETRY // GUINNESS



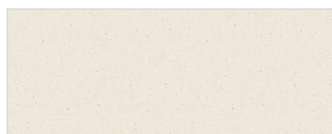
BEDDING



VALANCE



LIVING ACCENT



COUNTERTOP



FLOORING

CHASSIS

MODEL	ALL
Wheelbase	170"
Front GAWR (lbs)	4410
Rear GAWR (lbs)	7720
GCWR (lbs)	15250
GVWR (lbs)	11,030
Hitch Rating Weight (lbs)	4200
Tongue Weight (lbs)	500
Fuel Capacity (gal)	24.5

MERCEDES BENZ® SPRINTER 3500XD

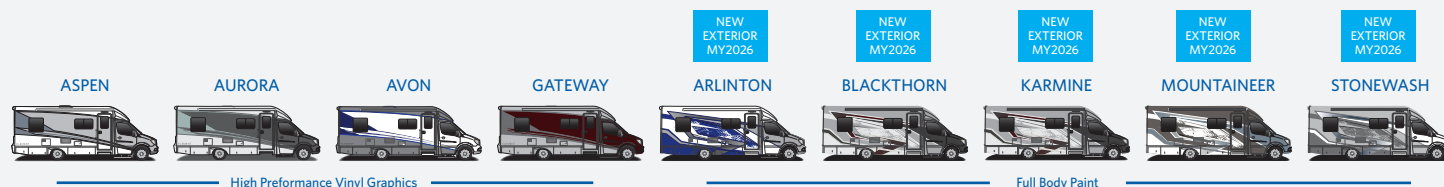
Engine: Cummins 2.0L 4-Cylinder
Horsepower: 211 HP
Torque: 332 lb.-ft.
Transmission: 9-Speed Automatic
Alternator: 280 AMP

DIMENSIONS & CAPACITIES

MODEL	25M	25Q	25T
Overall Length	25'6"	25'6"	25'6"
Overall Height	11'	11'	11'
Overall Width*	92.25"	92.25"	92.25"
Interior Height*	80"	80"	80"
Interior Width*	89.5"	89.5"	89.5"
Exterior Storage (cu. ft.)	42	42	42
Fresh Water Capacity (gal)	34	34	34
Grey Water Capacity (gal)	29	29	29
Black Water Capacity (gal)	29	29	29
LP Capacity (gal)	13.2	13.2	13.2

*Overall Width, interior height and width measured with slide-box in.

EXTERIORS



*This document contains preproduction information, specifications, and images that are subject to change.

ELEMENT

©2025 REV RECREATION GROUP, INC. PRINTED IN USA. INVENTORY CONTROL ELEMENT26F1, 4/25. MODEL YEAR 2026

2026
MODEL YEAR

CLASS C STANDARD FEATURES
ELEMENT



CHASSIS

Mercedes Benz® Sprinter™ 3500

High-Output Turbo Diesel 2.0L 4-Cylinder Engine

9-Speed Automatic Transmission

Mercedes Benz® Active Brake Assist

Mercedes Benz® Attention Assist

Mercedes Benz® Traffic Sign Assist

Mercedes Benz® Active Distance Assist DISTRONIC®

Rain Sensor w/ Wet Wiper System

Active Lane-Keeping Assist

LED Performance Headlights

CAB INTERIOR

Cab Courtesy Dome Light

Instrument Cluster w/ Color display

Leather Steering Wheel

MBUX Multimedia System w/ 10.25" Touchscreen

Multifunction Steering Wheel

Removable Cab Carpet and Privacy Shade

Sat/Nav Radio & 3yr map updates

Swivel, Power and Heated Seats

Upgraded Acoustic Package

Wireless Charging Capabilities

CAB EXTERIOR

Cab Exterior Steps

Heated Exterior Mirrors

Rear and Side View Cameras

EXTERIOR

Aluminum Wheels

Four Point Hydraulic Levelers

Frameless Windows

Front and Rear Brow Fiberglass

Full Body Paint

Keyless Entry

Lighted Grab Handle

Patio Awning w/ Wind Sensor and LED Lights

Power Entry Step

Side Swing Luggage Doors

Slide Out Topper Awning (where applicable)

ELECTRIC & UTILITIES

(1) 200W Solar Panel

(2) House AGM Batts

13,500 BTU A/C w/ Heat Pump

18,000 BTU Ducted Furnace

2000w Pure Sine Inverter

3.6KW LP Generator w/ Auto Gen Start

30 Amp Service

Cable/Sat System Ready

Exterior Shower and Spigot

Fresh Water Winterizing Filter Plug

GFI Receptacles (Select Locations)

Heated Holding Tanks (Black and Grey)

LP Quick Disconnect

Multiplex Control System w/ App Control

USB Charging in Living Area and Bedroom

Water Filtration System

Winegard Connect 2.0

INTERIOR

LED Ceiling Lights

Maple Hardwood Cabinetry

Premium Linoleum Flooring

Roller Shades and Valances

Soft Touch Padded Ceiling

KITCHEN

1.0 Cu Ft Convection Microwave Oven

2 Burner Gas Flush Mount Cooktop w/ Cover

8.0 Cu Ft 12v Compressor 2 Door Refrigerator

Booth Dinette (N/A 25T)

Deluxe Power Vent w/ Rain Sensors

Single Bowl Undermount SS Sink w/ Cover

Solid Surface Countertops

2026
MODEL YEAR

CLASS C STANDARD FEATURES
ELEMENT



BATHROOM

Deluxe Power Vents w/ Rain Sensors

Integrated Sink

Porcelain Macerator Toilet (N/A 25M)

Shower w/ Scroll Door

Skylight over Shower

ENTERTAINMENT

LED TV in Bedroom (N/A 25M)

LED TV in Living Area

CAPACITIES

13.2 Gallon LP Tank

29 Gallons Black Water

29 Gallons Grey Water

34 Gallons Fresh Water

Truma Comfort Plus Tankless Water Heater

CONSTRUCTION

Azdel Interior Wallboard

Exterior Walls resting on Floor - Not relying on screws

Non-Organic Floor Decking (Top & Bottom)

Preformed Metal Strap Tank Holders

Triple Slide Room Guides

Vacuum Bonded Laminated Walls, Floor, Ceiling

WEIGHTS

MODEL	ALL
Wheelbase	170"
Front GAWR (lbs)	4410
Rear GAWR (lbs)	7720
GCWR (lbs)	15250
GVWR (lbs)	11,030
Hitch Rating Weight (lbs)	4200
Tongue Weight (lbs)	500
Fuel Capacity (gal)	24.5

DIMENSIONS

MODEL	ALL
Overall Length	25'6"
Overall Height	11'
Overall Width*	92.25"
Interior Height*	80"
Interior Width*	89.5"
Exterior Storage (cu. ft.)	42
Fresh Water Capacity (gal)	34
Grey Water Capacity (gal)	29
Black Water Capacity (gal)	29
LP Capacity (gal)	13.2

AVAILABLE OPTIONS

Cab Table

Diamond Shield Anti-Chip Protection

Enhanced Lithium Upgrade w/Generator Delete

Lithium Batteries Upgrade

Outside Entertainment Center

Single Burner Induction Stovetop

Theater Seating *Replaces Booth Dinette (N/A 25T)*

Upgrade to 330W Solar

MERCEDES BENZ® SPRINTER 3500XD

Engine: Cummins 2.0L 4-Cylinder

Horsepower: 211 HP

Torque: 332 lb.-ft.

Transmission: 9-Speed Automatic

Alternator: 280 AMP