

**2026**  
MODEL YEAR

# CLASS A DIESEL ENDEAVOR

**HR** HOLIDAY RAMBLER  
holidayrambler.com

38N | 38W



## Top Features

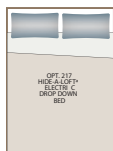
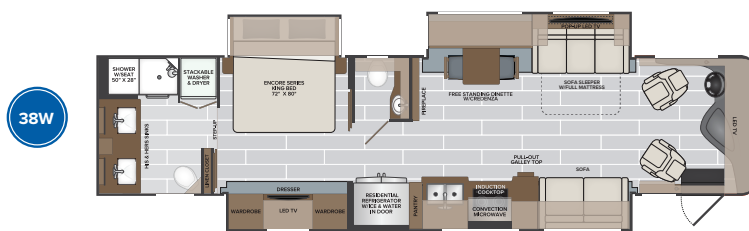
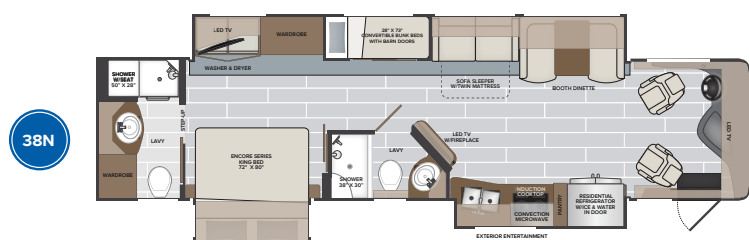
- Titan Bridge®
- Molded Fiberglass Roof - sleek appearance, low maintenance and lasting durability
- Dual monitors in cockpit for easy viewing of cameras and navigation
- Fireplace, All Floorplans
- Firefly MultiPlex Wiring w/ Color Touchscreen
- Residential refrigerator, induction cook top, and convection microwave come as standard equipment.
- WiFi Extender Pro Pack w/LTE, Cell Booster, 330W Solar Panel, Collision Mitigation by Mobileye®, Firefly Eclipse Module - Enabling Remote Access Via App Control
- Polished Porcelain Tile Floor w/living area Heated-Standard
- Generous interior and exterior storage plus large holding tank capacities
- Aqua Hot 400D provides unlimited hot water and comfortable interior heat.
- Furniture styled by Apex Custom Furniture

## Freightliner® Custom Chassis Features

- XCM Chassis
- Cummins®, 6.7L, 360HP Engine
- V-Series Suspension System with the VFS Front Suspension
- V-Ride™ technology (*enhanced stability*)
- BrakeSync (*standard*)
- Tire Pressure Monitoring (*standard*)

## AVAILABLE OPTIONS

- Dishwasher
- Power Passenger Seat w/ Power Footrest
- Motion Power Lounge w/ USB and Lighted Cupholders
- Hide-A-Loft™ Electric Drop Down Bed
- Mid-Ship LED TV (38W only)
- L-Shaped Dinette (38N only)
- Dream Dinette (38W only)
- Free Standing Dinette w/Credenza (38N only)
- Technology Package (WiFi Extender Pro Pack w/LTE, Cell Booster, 330W Solar Panel, Collision Mitigation by MobileEye, FireFly Eclipse Module - enabling remote access from app via WiFi)



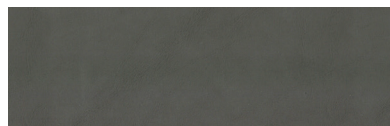
2026  
MODEL YEAR

CLASS A DIESEL  
**ENDEAVOR**

**HOLIDAY RAMBLER**  
holidayrambler.com

38N | 38W

BAYTOWN



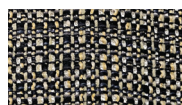
SOFA



LIVING ACCENT



BEDDING



VALANCE



BACKSPLASH



COUNTERTOP



FLOORING

RIVIERA



SOFA



LIVING ACCENT



BEDDING



VALANCE



BACKSPLASH



COUNTERTOP



FLOORING

WATERFORD



SOFA



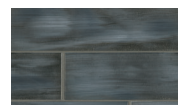
LIVING ACCENT



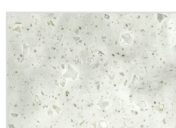
BEDDING



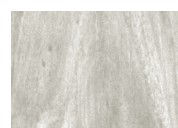
VALANCE



BACKSPLASH



COUNTERTOP



FLOORING



SUMMIT ASH



NEW  
WOOD  
COLOR

TOFFEE



GUINNESS

CHASSIS

MODEL	38N	38W
Wheelbase	252"	263"
Front GAWR (lbs)	12,600	12,600
Rear GAWR (lbs)	21,000	21,000
GCWR (lbs)	43,600	43,600
Hitch Rating Weight (lbs)	10,000	10,000
Tongue Weight (lbs)	1,000	1,000
Fuel Capacity (gal)	100	100

TITAN BRIDGE®  
Model: Freightliner® Custom Chassis - XCR  
Engine: Cummins ISB 6.7L, 360HP  
Transmission: Allison® 3000 MH 6-Speed  
Alternator: Delco Remy 160 Amp  
Torque: 800 lb.-ft.



DIMENSIONS AND CAPACITIES

MODEL	38N	38W
Overall Length	38' 8"	40' 1"
Overall Height	12' 10"	12' 10"
Overall Width*	102"	102"
Interior Height*	84"	84"
Interior Width*	96"	96"
Patio Awning Width	18'	18'
Interior Storage (cu. ft.)	148	132
Exterior Storage (cu. ft.)	127	142
Fresh Water Capacity (gal)	105	105
Grey Water Capacity (gal)	75	75
Black Water Capacity (gal)	50	50

\*Overall Width, Interior Height and Interior Width measured with slide-box in.

EXTERIORS

NEW  
EXTERIOR  
MY2026



ADMIRAL

NEW  
EXTERIOR  
MY2026



ALTITUDE

NEW  
EXTERIOR  
MY2026



BATTLESHIP

NEW  
EXTERIOR  
MY2026



HARBOR

NEW  
EXTERIOR  
MY2026



LATITUDE

NEW  
EXTERIOR  
MY2026



LONGITUDE

NEW  
EXTERIOR  
MY2026



SHORESIDE

ENDEAVOR

©2024 REV RECREATION GROUP, INC. PRINTED IN USA. INVENTORY CONTROL ENDEAVOR26F1, 5/24. MODEL YEAR 2026