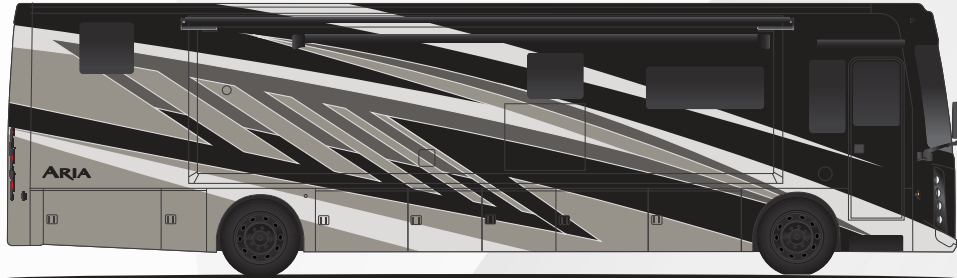


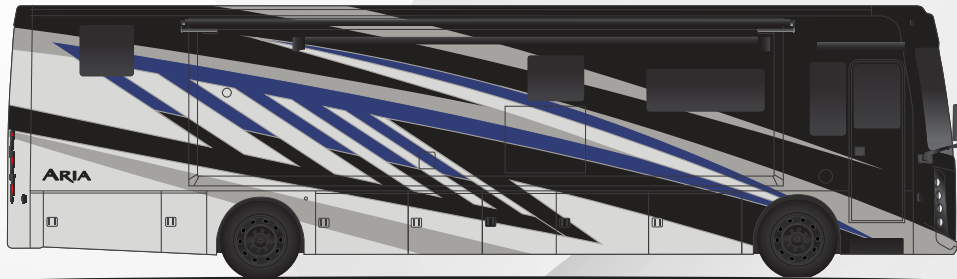
# ARIA



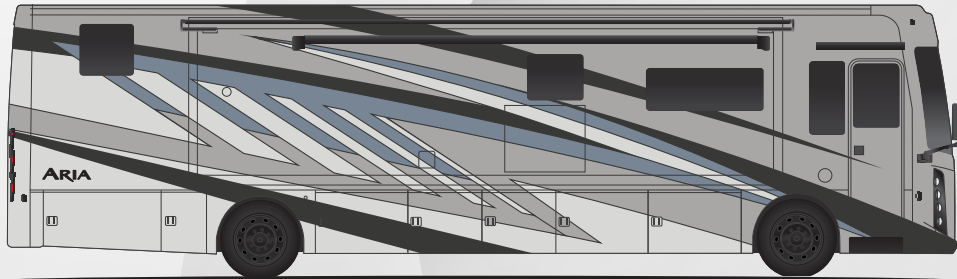
Use your phone's camera to find out more information. Just scan the code!



Acadia



Cobalt

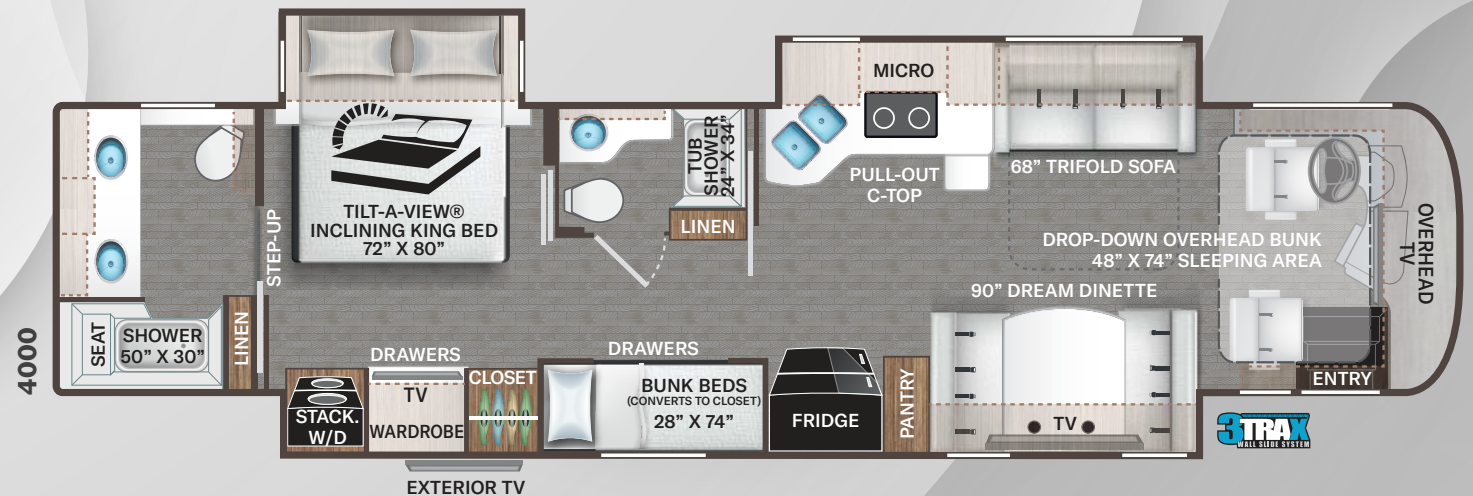
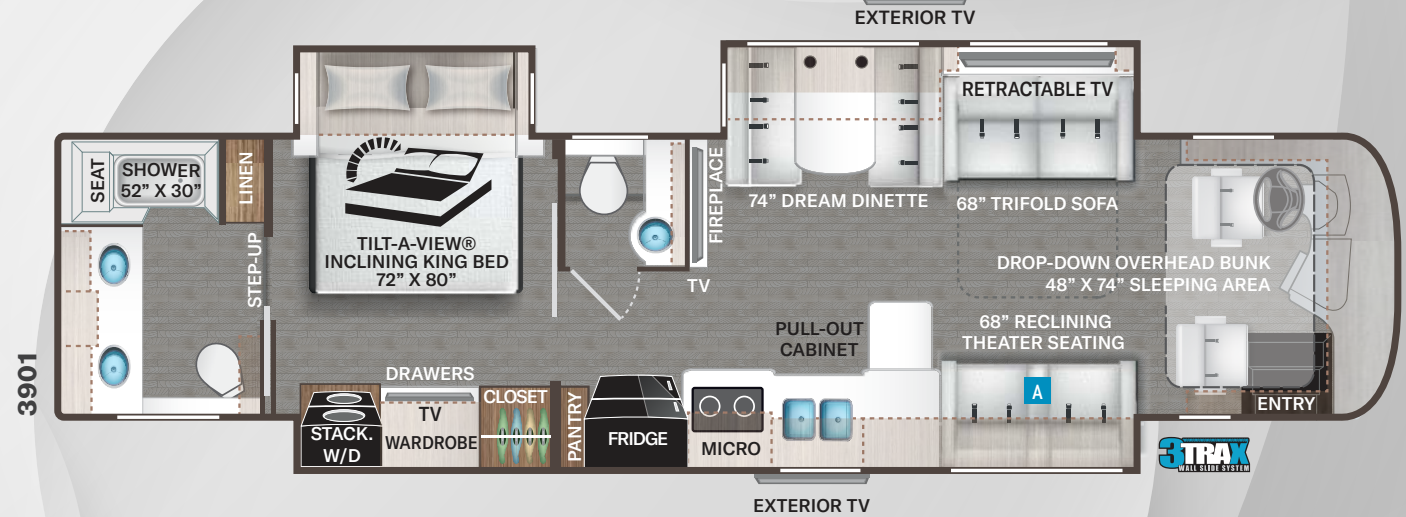
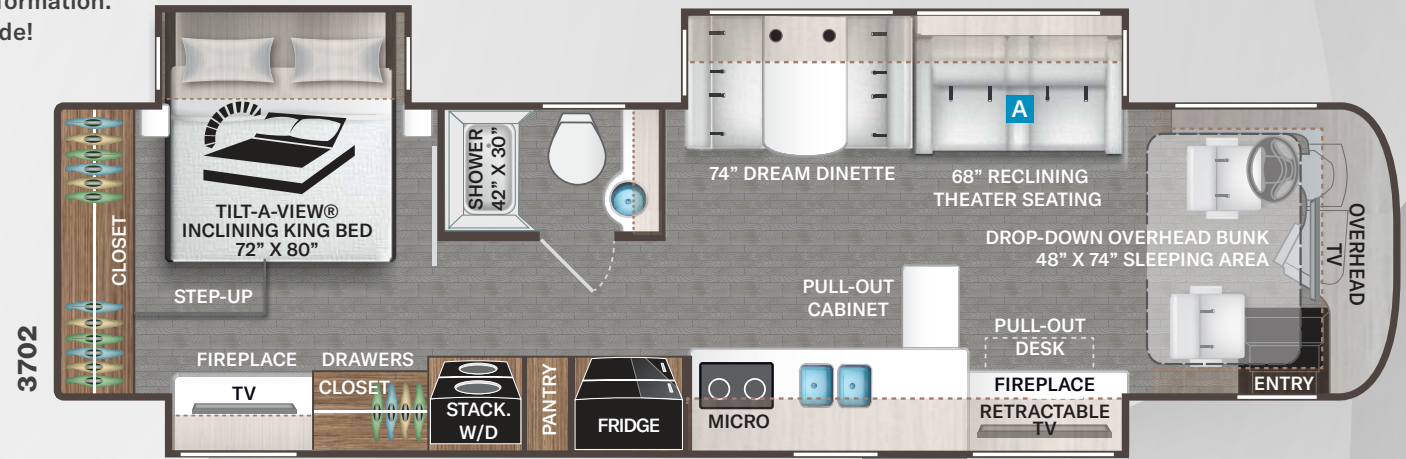


Luna

Option Available on Select Floor Plans:



OPTIONAL 68" TRIFOLD SOFA





# ARIA



Use your phone’s camera to find out more information. Just scan the code!



P.O. Box 1486, Elkhart, IN 46515  
Sales Department: 800.860.5658

### CONSTRUCTION & EXTERIOR

- Freightliner® XC-R Raised Rail Chassis with Atlas Foundation™
- Cummins® ISB-XT 6.7L Engine with 360HP & 800 lb.-ft. Torque
- In-Block Engine Heater
- 6-Speed Allison MH-3000 Automatic Transmission
- 100-gallon Fuel Tank with Dual Fills
- Air-Ride™ Suspension
- VFS Front Axle with 55° Wheel Cut
- Full Air Front & Rear Drum Anti-Lock Brakes
- Exhaust Brake
- Sachs® Shock Absorbers
- One-Piece Fiberglass Front & Rear Caps
- One-Piece Windshield
- Premium One-Piece Domed Roof Membrane
- Full-Body Paint Packages with Gel-Coat Sidewalls
- Invisible Front Paint Protection
- Automatic Leveling Jacks with Touchpad Controls
- Side-Hinged Locking Compartment Doors with Gas Pistons
- Basement Pass-Through Storage
- Easy Slide Storage Tray
- Power Entry Door & Patio Lateral Arm Awnings with Integrated LED Lighting
- Slideout Room Topper Awnings
- Patio Light (Both Sides)
- Roof Ladder
- Frameless Dual Pane Windows
- 10,000-lb. Trailer Hitch with 7-pin Round Connector

### AUTOMOTIVE & COCKPIT

- 14” Touchscreen Dash Radio with Bluetooth®, Apple CarPlay®/Android Auto® & Sirius/XM® Radio Prep
- Back-Up Monitor

- Heated/Power Mirrors with Integrated Side View Cameras
- Blind Spot Detection
- Leatherette Reclining/Swivel, Power Adjustable Captain’s Chairs with Lumbar Support (Passenger Seat has Electric Footrest)
- Keyless Entry System
- Tilt/Telescoping Steering Column
- Cruise Control
- Air Horns
- Fog Lights
- Emergency Engine Start & Generator Start Switch on Dash
- Map Lights & Dash Fans
- Driver & Passenger Overhead Storage Cabinetry
- Wireless Phone Charger with USB Ports Located Next to Passenger Seat
- Power Solar & Privacy Shades on Windshield
- Manual Solar & Privacy Shades on Side Windows
- Electric Step Cover
- Double-Electric Entry Step
- Thor Insignia Puddle Light at Entry Door
- 295/75R 22.5” Radial Tires
- Stealth Package: Includes Black Aluminum Wheels, Headlight Bezels, Logos & TMC Emblem
- Power Drop-Down Hide-Away Overhead Bunk with Cotton Cloud™ Mattress

### AUTOMOTIVE & COCKPIT OPTION

- Chrome Package: Includes Polished Aluminum Wheels, Chrome Headlight Bezels, Logos & TMC Emblem

### INTERIOR

- Porcelain Tile Flooring
- Central Vacuum System
- Ceiling Ducted Whisper Air™ Central Cooling System

- Soft Vinyl Ceiling
- LED Lighting
- Chalet Collection Two-Tone Cabinetry with Satin Nickle Hardware
- Full Extension Metal Ball Bearing, Soft Closing Drawer Guides
- Window Privacy Roller Shades
- D/S Leatherette Sofa Bed (3901 & 4000 )
- Leatherette Power Reclining Theater Seating with Footrests, Heat, Massage, USB Charging Ports & Cup Holders - On Inverted Power Circuit (3702 & 3901)
- Leatherette Dream Dinette® Booth with Wireless Charger on Table Top & Dual Child Safety Tethers
- Electric Fireplace with Remote Control (3702 & 3901)

### INTERIOR OPTION

- Asheville Collection Two-Tone Cabinetry with Chrome Finish Hardware
- D/S Leatherette Sofa Bed (3702)
- P/S Leatherette Sofa Bed (3901)

### KITCHEN

- Residential Refrigerator with In-Door Water & Ice Dispenser
- Two Burner Electric Induction Cooktop
- Designer Tile Backsplash
- Stainless Steel Over-the-Range Convection Microwave Oven with Air Fryer
- Solid Surface Countertops
- Pop-Up Wireless Phone Charger with Outlets & USB Charge Ports in Kitchen Countertop
- Large Double Bowl Stainless Steel Sink with Single Handle Faucet & Pull-Down Sprayer
- Solid Surface Sink Covers
- 12-volt Attic Fan with Cover

### BEDROOM & BATHROOM

- King Size Bed with Tilt-A-View® Inclining Bed Mechanism
- Bedspread with Throw Pillows
- Wireless & USB Charging Ports
- Bunk Beds - Converts to Closet (4000)
- Electric Fireplace with Remote Control (3702)
- 110-Volt Outlet on Inverted Circuit for CPAP Machine
- Foot Flush Porcelain Toilet
- Macerator Toilet (3901 & 4000)
- Oversized Full Height Fiberglass Shower with Glass Door
- Oxygenics® Shower Head
- Skylight in Shower
- Second Full Height Fiberglass Shower and Tub with Glass Door (4000)
- 12-volt Attic Fan w/Cover in Bathroom

### ENTERTAINMENT

- 55” & 42” LED Smart TV in Living Area (3901)
- 50” LED Smart TV in Living Area (3702 & 4000)
- 32” LED Smart TV in Cockpit Overhead (3702 & 4000)
- 32” LED Smart TV in Bedroom
- Sound Bar with Bluetooth®
- Exterior 40” TV on Swivel Bracket with Sound Bar with Bluetooth®

- TV Prep & USB Charge Port in Bunk Beds (4000)
- Cable TV & HDMI Video Distribution
- Satellite Mounting Backer in Roof
- Winegard® ConnecT™ 5G / WiFi Extender / TV Antenna

### ELECTRICAL & PLUMBING

- Onan® RV QD 8000 Diesel Generator
- Automatic Generator Start
- Automatic Transfer Switch with Power Protection
- 50-amp Shoreline Power Cord
- 12-volt Electric Power Cord Reel
- Aqua-Hot® 250D Hydronic Furnace & Water Heating System
- 2000-watt Pure Sine Inverter/100-amp Converter
- Triple Roof Air Conditioners with Heat Pump in Front Living Area
- Energy Management System
- Four (4) Auxiliary House Batteries
- Battery Disconnect Switch
- Rapid Camp+® Multiplex Wiring Control System with 7” Screen, WiFi-App-Enabled & SurgeGuard® Electrical Protection
- 100-watt Solar Charging System controlled via Multiplex Panel
- Exterior GFCI Recept
- Enclosed & Heated Holding Tanks

- E-Z Flow Water Panel with Whole-House Water Filtration
- Black Tank Flush System
- 360° Siphon® Holding Tank Vent Cap
- Outside Shower
- Stackable Washer & Dryer

### ELECTRICAL & PLUMBING OPTIONS

- 400-watt Additional Solar Charging System

For a complete listing of specifications and available features, visit: [thormotorcoach.com/aria](http://thormotorcoach.com/aria)

**IMPORTANT—PLEASE READ:** This brochure reflects product design, fabrication, material, components and specifications at the date of printing, which date is disclosed below. Please visit us online at [ThorMotorCoach.com](http://ThorMotorCoach.com) or consult with your selling dealership for the latest in standards, options, specification and technical information. Photographs in the brochure may depict optional equipment or may only be available in certain floor plans. Components, appliances and the chassis may have been manufactured in a calendar year before the vehicle’s designated model year. All capacities are approximate. The actual length of the vehicle may differ from that indicated in the brochure due to variances in the manufacturing processes and/or installed components. All dry weights are based on standard model features and do not include optional features or equipment. Component part and appliance manufacturers issue limited warranties covering portions of the vehicle not covered under the limited warranty we issue. Copyright Thor Motor Coach, Inc. © MY 05/07/2025

SPECIFICATIONS	3702	3901	4000
Chassis	Freightliner XC-R	Freightliner XC-R	Freightliner XC-R
Gross Vehicle (GVWR)	35,320	35,320	35,320
Gross Combined (GCWR)	45,320	45,320	45,320
Wheel Base	245”	270”	284”
Exterior Length (w/o ladder)	37’-8”	39’-11”	41’-1”
Exterior Height (w/AC)	12’-6”	12’-6”	12’-6”
Exterior Width (w/o mirrors)	101”	101”	101”
Interior Height (living area)	84”	84”	84”
Awning Size	20’	20’	20’
Fuel/DEF (gal)	100 / 13	100 / 13	100 / 13
Fresh/Waste/Gray Water (gal)	91 / 51 / 51	91 / 51 / 51	91 / 51 / 70
Water Heater (gal)	Tankless	Tankless	Tankless
Furnace (BTUs)	40,000	40,000	40,000
Exterior Storage Capacity (cu. ft.)	170	215	240
Hitch Weight Rating (lbs)	10,000	10,000	10,000