

VECTRA™



***There's
no place
like Vectra.***



THERE'S A PLACE THAT FEELS LIKE HOME.



There's a place that feels like home. It's nestled in the shimmering aspen leaves of the Rockies, or beneath a Spanish moss canopy down south. The place is Vectra™, one of the most thoughtfully designed highline motor homes ever built. Vectra has everything you want in a home. The comfort of hand-crafted

furniture. The space for your hobbies. The convenience of a delightful

kitchen. As a pioneer, Vectra is everything other motor homes strive to be.





the way. The forward-mounted rearview mirrors



increase your visibility and minimize blind spots. The side entrance comes with automatic electric steps that extend when the entry door is opened. An acrylic awning is now available as an option. And as you might guess from the size of the windows and windshield, the view from here is spectacular.

A high point of the exterior is the patio entertainment center option. It includes a large pull-out picnic table, a

We start the tour on the outside. Vectra is designed to offer more space than any other motor home created by Winnebago Industries, and we've gone the extra mile to maximize the use you'll get out of it. Along both sides is lighted basement storage, complete with gas struts to hold the doors as they swing up and out of



FORWARD INTERIOR



complete stereo system and TV connections. These sorts of practical features are precisely what makes Vectra stand out as one of the most livable motor homes.

Though we've gained our popularity by building a well-designed home, the feel behind the wheel is equally important. Vectra's surprisingly easy to handle and maneuver, and with the well-located switches, rear monitor and stereo, driving



is a true pleasure. The switches' large, easy-moving rocker design provides convenience right at your fingertips.

Special driver features include multi-position tinted sunvisors, cruise control, map lights and a 4-speaker AM/FM cassette stereo.

You also have the option of the remote controlled multi-disk CD player for hours of listening pleasure. In the driver door photograph, you can see the power windows, the 6-way power adjustable captain's seat, the HWH® 4-point, bi-axis, hydraulic leveling system and heated remote control mirrors – just some of the many features offered on the '94 Vectra.

Vectra was designed from a blank sheet employing a strategy called Home Comfort Design. Before anything is implemented into the vehicle, it must meet our standards of practicality, comfort and beauty. Net result is a wonderful and efficient motor home.

The livability is especially evident on the interior. Like many Winnebago Industries motor homes, the comfortable, high-back cab seats swivel back to the lounge area. Because the driver platform is level with the living area floor, it's much easier to get in and out of cab. The



engine is in the back of the pusher model shown, adding even more space to the forward area.

Overhead, the optional 19" color TV and VCR come with remote speakers to create a complete television entertainment center. Everything is remote controlled. The tinted glass doors hide the



VCR and switching system. You can further enhance the entertainment center



during the day by dimming the outside sun with the translucent day-nighter

window blinds. The dual purpose blind also has an opaque element which,

when pulled down at night, will insure that you have complete privacy.





Sherwood



accent



carpet



Rosewood



accent



carpet



Crystal



accent



carpet



Cashmere



accent



carpet



Galleria (35th Anniversary)



accent



carpet

The same eye for detail is evident with the upholstery. We've made a special effort to maintain the beauty for years: the carpet is 100% stain free and all fabrics are treated with Scotchgard™ Protector.

The kitchen is another good example of how Home Comfort Design works. First, you have all the necessary features of a home: a large oven, a low-

As you move back through the motor home, cushioned by the thick carpeting, examine the craftsmanship and attention to detail of the decor. Unlike competitive motor homes who use outside companies to help create the furnishings, most of Vectra's furniture has been hand-crafted in our Forest City plant to fit our specifications exactly.



GALLEY



mounted microwave, a range hood, a large double-door refrigerator, a recessed double stainless steel sink and an Everpure® water

purification system. The recessed 3-burner range is also standard with a bi-fold cover and has one high-output burner for meals that need

the extra heat or for cooking in high altitudes. Depending on the model, you can choose from a



closet (34RA), and if you desire, an optional free-standing dinette and oak-plank flooring. The result is a truly delightful working kitchen.

The tour of the interior continues in the bedroom.

It's easy to relax in a bedroom this well designed. Not only is the room impeccably coordinated from window treatments to pillow shams, it's comfortable, with a walk-around Sealy® Innerspring queen bed, twin nightstands

and reading lamps. The bed lifts for even more storage.

As for bedroom amenities, each floorplan has expansive room in the wardrobe for even the most fashion conscious. You also have the option of adding a remote-controlled color TV in a corner cabinet or in the rear wardrobe. And consider the stereo with an AM/FM auto-reverse cassette deck and an alarm clock. The bedroom also comes with its own generator switch.

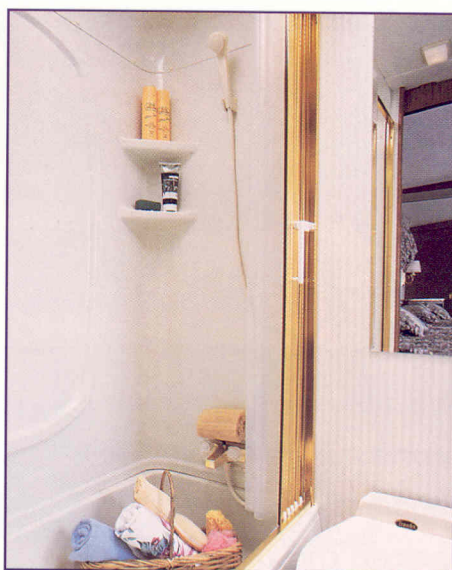
dishwasher, a coffee maker, an ice maker and a combination microwave/convection oven to name a few. We finish it off with beautiful woodwork, a china

BEDROOM



In the bathroom you'll notice the sensible amenities and use of space. Bathroom design varies from floorplan to floorplan, but each has exceptional space for towels, multiple storage cabinets, drawers, a large sink and a convenient second water pump switch. The 37' floorplan has a separate makeup area from the sink, which includes makeup lights,

BATH



a comfortably padded vanity stool and twin wardrobes with drawers.

A special addition for this year is the choice of the elegant 35th Anniversary color scheme. As with all of



our color themes, it's coordinated throughout – from window dressings right down to the carpeting.

Of course it's nice to have such a deluxe interior, but the Vectra also incorporates



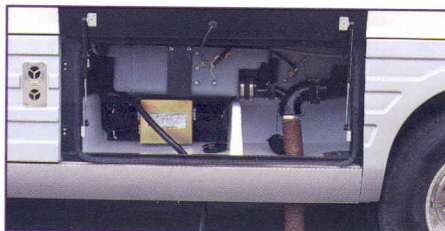
SYSTEMS

a healthy measure of unseen value in its solid construction and attention to detail where it really counts. The solid steel frame is one of the best in the business. Add to it our exclusive Thermo-Panel® construction and a thick 4-inch, insulated roof with front-to-back air conditioning ductwork.



It's remarkable how our construction stands up against other comparably priced motor homes.

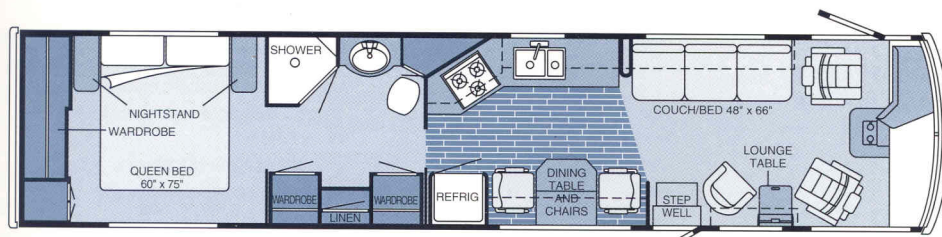
Vectra's holding tank area is another place where we spent time designing it for RVer's needs. The heated compartment includes easily accessed valves, a practical plastic floor with a trap door, and a standard



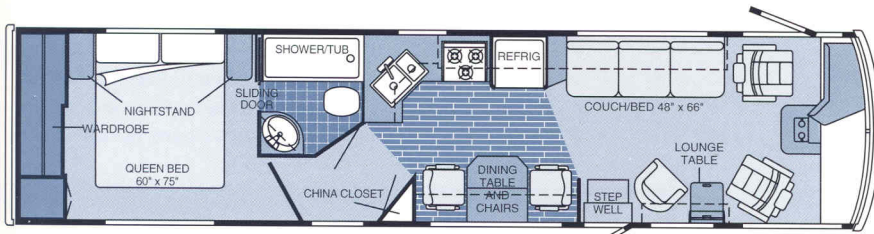
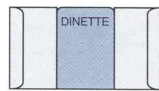
pull-out shower for quick clean ups. This kind of sensible thinking is evident everywhere.

Each floorplan is unique and individually built to the special considerations of the length and design. There are some features which are standard throughout, like the roof-mounted luggage rack. But we were also able to take advantage of specific design intricacies to give

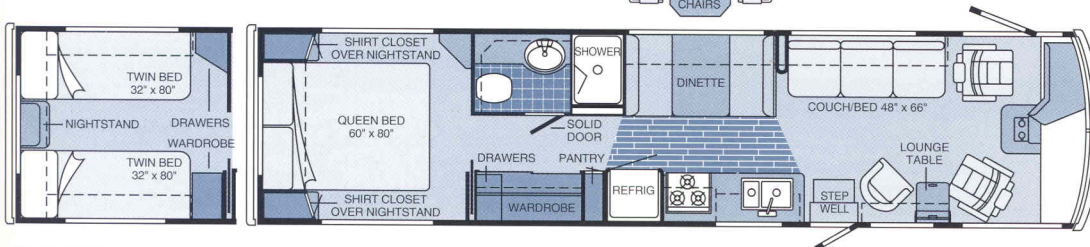




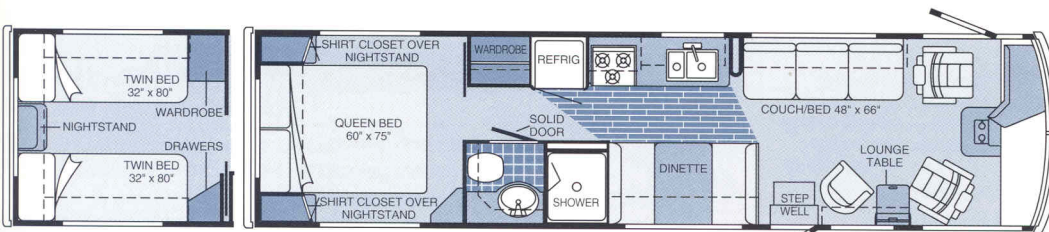
37RW



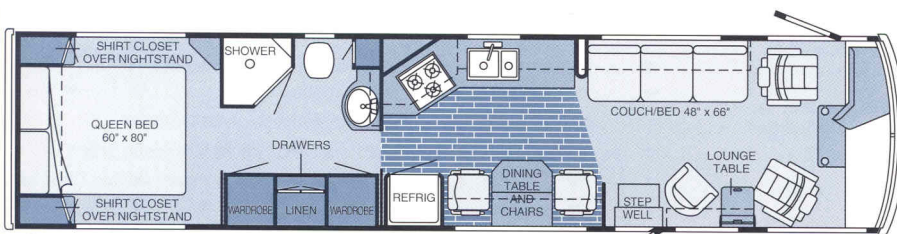
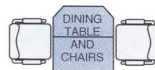
34RA



33RQ



31RQ



35RQ PUSHER



Note: Dimensions shown are for sleeping space only. Dashed lines denote overhead storage area. Patterned area indicates optional planked wood floor covering.

our customers something extra; an example of this is the access to the underbed storage through the locking exterior door on the 33RQ and 31RQ.

When it comes down to it, the details are what made Vectra one of the most popular new motor homes of last year. For those who have been searching for a

motor home designed with luxury in mind, with an ingenious use of space and sensible, elegant style, Vectra is a place you can call home.

SPECIFICATIONS

31RQ	33RQ	34RA	37RW	35RQ-P	Note: P=Pusher (Diesel)
31'7"	33'7"	34'9"	36'11"	35'5"	Length
10'10.5"	10'11"	10'10.5"	11'	NA	Exterior Height - Chevrolet
11'1.5"	10'11"	10'9.5"	10'11.5"	NA	Exterior Height - Ford
NA	NA	NA	NA	11'	Exterior Height - Pusher
8'	8'	8'	8'	8'	Exterior Width
6'8"	6'8"	6'8"	6'8"	6'8"	Interior Height
7'7"	7'7"	7'7"	7'7"	7'7"	Interior Width
85.8 cu. ft.	116.5 cu. ft.	120 cu. ft.	93.2 cu. ft.	93.5 cu. ft.	Exterior Storage
78 gal.	78 gal.	78 gal.	78 gal.	NA	Fuel Capacity - Chevrolet
75 gal.	75 gal.	75 gal.	75 gal.	NA	Fuel Capacity - Ford
NA	NA	NA	NA	100 gal.	Fuel Capacity - Pusher
86 gal.	86 gal.	86 gal.	86 gal.	92 gal.	Fresh Water Capacity w/Heater
99 gal.	105 gal.	105 gal.	105 gal.	105 gal.	Holding Tank Capacity
100 lbs.	100 lbs.	100 lbs.	100 lbs.	130 lbs.	LP Capacity
16,000 lbs.	16,000 lbs.	16,000 lbs.	18,000 lbs.	NA	GVWR - Chevrolet
17,000 lbs.	17,000 lbs.	17,000 lbs.	19,000 lbs.	NA	GVWR - Ford
NA	NA	NA	NA	20,500 lbs.	GVWR - Pusher
208"	228"	228"	228" + Tag	228"	Wheelbase

AUTOMOTIVE

31RQ	33RQ	34RA	37RW	35RQ-P	
▼	▼	▼	▼		Chassis - Chevrolet 7.4L 454 V-8 Fuel-Injected Gasoline Engine, Automatic Transmission w/Overdrive & Cooler, Front Suspension: Independent, Coil Spring w/Aux. Air Springs, Rear Suspension: Leaf Spring, 630-CCA Battery/105-Amp. Alternator
▼	▼	▼	▼		Chassis - Ford 7.5L 460 V-8 Fuel-Injected Gasoline Engine, Automatic Transmission w/Overdrive & Cooler, Front Suspension: Mono-Beam Axle w/Leaf Spring, Rear Suspension: Multi-Leaf Spring, 650-CCA Battery/130-Amp. Alternator
▼	▼	▼	▼	▼	Chassis - Spartan 5.9L Turbo-Charged/After-Cooled 230-Horsepower Diesel Engine, Automatic Transmission w/2-Speed Overdrive & Cooler, Mono-Beam Axle w/Leaf Spring Front Suspension, Multi-Leaf Spring Rear Suspension, 1125-CCA Battery, 105-Amp. Alternator
▼	▼	▼	▼		Shocks (Gas) Front, Chevrolet
▼	▼	▼	▼		Suspension (Air) w/Park, Level
▼	▼	▼	▼	▼	Suspension (Air) Tag Axle
▼	▼	▼	▼	▼	Suspension (Air) Rear & Tag Axle w/Park, Level
▼	▼	▼	▼	▼	Tires (Radial) w/Spare

DRIVER CONVENIENCES

31RQ	33RQ	34RA	37RW	35RQ-P	
▼	▼	▼	▼	▼	Battery Charge Control Dual, Automatic
▼	▼	▼	▼	▼	Battery Charger (Solar) Wiring Prep
▼	▼	▼	▼	▼	Battery Disconnect Auxiliary
▼	▼	▼	▼	▼	Cabinet Center Console
▼	▼	▼	▼	▼	Cassette Tape Storage
▼	▼	▼	▼	▼	Convenience Tray
▼	▼	▼	▼	▼	Cruise Control
▼	▼	▼	▼	▼	Defroster Aux. 2-Speed
▼	▼	▼	▼	▼	Floor Mats Driver, Passenger, Entry
▼	▼	▼	▼	▼	Fog Lamps
▼	▼	▼	▼	▼	Heating/Air Conditioning Automotive Blend Air System
▼	▼	▼	▼	▼	Hood Light
▼	▼	▼	▼	▼	Hood Release Exterior Key Locks
▼	▼	▼	▼	▼	Lamps (2) Auxiliary Side Illumination
▼	▼	▼	▼	▼	Map Lights (2) w/Remote Switches
▼	▼	▼	▼	▼	Mirrors (Rear View) Forward Mounted, Include Convex Element
▼	▼	▼	▼	▼	Mirrors (Rear View) Electronically Controlled, Heated
▼	▼	▼	▼	▼	Rearview Monitor System Video/Audio

▼	▼	▼	▼	▼	Seats w/3-Point Retracting Seat Belts Reclining High-Back Design, Hinged Armrests, Lumbar Support, Swivel/Slide Pedestal
▼	▼	▼	▼	▼	Seat Pedestal* (Driver) 6-Way Power Adjustable
▼	▼	▼	▼	▼	Service Light (Driver)
▼	▼	▼	▼	▼	Shades Pleated Front Wraparound
▼	▼	▼	▼	▼	Squeegee Long Handle, Stored under Hood
▼	▼	▼	▼	▼	Start Circuit Auxiliary
▼	▼	▼	▼	▼	Steering Power Assisted w/Tilt Wheel
▼	▼	▼	▼	▼	Steering Wheel (Custom) Chevrolet Only
▼	▼	▼	▼	▼	Storage Cabinet (Overhead)
▼	▼	▼	▼	▼	Sunvisors
▼	▼	▼	▼	▼	Window (Power) Driver
▼	▼	▼	▼	▼	Window (Sliding) Passenger, w/Screens
▼	▼	▼	▼	▼	Window Shades Roller, Light Filtering
▼	▼	▼	▼	▼	Windshield Wipers (Intermittent) Pantographic

ENTERTAINMENT

31RQ	33RQ	34RA	37RW	35RQ-P	
▼	▼	▼	▼	▼	Antenna (Radio) Roof-Mounted
▼	▼	▼	▼	▼	C.B. Prep Kit Antenna, Coax Wiring, 12-V Power Connection
▼	▼	▼	▼	▼	CD Multi-Disc Changer w/Radio Exchange
▼	▼	▼	▼	▼	Entertainment Center (Patio) DC Receptacle, 110-V Outlet, TV Jack, Radio Antenna, AM/FM Radio, Cassette Deck, Speakers (2), Pull-Out Table
▼	▼	▼	▼	▼	Inverter 110-V for TV/VCR
▼	▼	▼	▼	▼	Stereo Power Switch For Main or Auxiliary Battery Use
▼	▼	▼	▼	▼	Stereo System Rear
▼	▼	▼	▼	▼	Stereo w/Digital Clock (Cab) Deluxe Electronic Tune AM/FM/Cassette Deck w/Auto Reverse, Seek Feature, Speakers (4)
▼	▼	▼	▼	▼	Telephone Input
▼	▼	▼	▼	▼	TV (9" Color) w/Remote in Bedroom
▼	▼	▼	▼	▼	TV (13" Color) w/Remote in Bedroom
▼	▼	▼	▼	▼	TV (19" Color) w/Remote Cabinet Exchange
▼	▼	▼	▼	▼	TV (19" Color) & VCR w/Remotes Switching System, Cabinet Exchange
▼	▼	▼	▼	▼	TV Enhancement Package Antenna (Amplified), DC Receptacles (2), Interior Jacks (2), Coax Wiring, Cable Input, Exterior Antenna Jack, TV Cabinet or Stand

INTERIOR

31RQ	33RQ	34RA	37RW	35RQ-P	
▼	▼	▼	▼	▼	Cabinets Wood Framed Doors w/Wood Inserts
▼	▼	▼	▼	▼	Carpeting w/Pad Stain Resistant w/Scotchgard™ Protector
▼	▼	▼	▼	▼	Ceiling Padded Vinyl Headliner
▼	▼	▼	▼	▼	Ceiling Lights
▼	▼	▼	▼	▼	Ceiling Lights Fluorescent
▼	▼	▼	▼	▼	Ceiling Vent Non-Powered, Galley
▼	▼	▼	▼	▼	Ceiling Vent Powered w/Remote Switch, Bathroom
▼	▼	▼	▼	▼	Clock Decorator Style
▼	▼	▼	▼	▼	Color Themes (Interior) Choice of Sherwood (Forest Green), Crystal (Blue), Rosewood (Burgundy/Cream), Cashmere (Taupe), all w/Choice of Pickled Ash or Salem Cherry Woodgrain
▼	▼	▼	▼	▼	Color Theme (Interior) Galleria (35th Anniversary), w/Choice of Pickled Ash or Salem Cherry Woodgrain
▼	▼	▼	▼	▼	Lamp[s] Decorator Style, Wall-Mounted in Lounge
▼	▼	▼	▼	▼	Picture[s] Framed
▼	▼	▼	▼	▼	Vacuum Cleaner (Central) 30' Hose, Tools, Turbine Power Brush
▼	▼	▼	▼	▼	Washer/Dryer Combination
▼	▼	▼	▼	▼	Windows Tinted w/31% Light Transmittal

GALLEY

31RQ	33RQ	34RA	37RW	35RQ-P	
▼	▼	▼	▼	▼	China Closet
▼	▼	▼	▼	▼	Coffee Maker

▼	▼	▼	▼	▼	Cutting Board	Slide Out
▼	▼	▼	▼	▼	Dishwasher*	Built in under Counter
▼	▼	▼	▼	▼	Flooring (Planked)	
▼	▼	▼	▼	▼	Folding Chairs (2)	
▼	▼	▼	▼	▼	Icemaker*	
▼	▼	▼	▼	▼	Light	Decorative
▼	▼	▼	▼	▼	Microwave Oven	
▼	▼	▼	▼	▼	Microwave/Convection Oven	
▼	▼	▼	▼	▼	Pantry	
▼	▼	▼	▼	▼	Range Hood	w/Light, Powered Vent
▼	▼	▼	▼	▼	Range Hood	w/Light, Ductless Fan
▼	▼	▼	▼	▼	Range w/Large Glass-Doored Oven	3-Burners (1 High Output), Range Cover
▼	▼	▼	▼	▼	Range Top w/Storage Below	3-Burners (1 High Output), Range Cover
▼	▼	▼	▼	▼	Refrigerator/Freezer	Large, Double-Door, Flush Mounted
▼	▼	▼	▼	▼	Refrigerator/Freezer	Large Double-Door, Icemaker
▼	▼	▼	▼	▼	Sink (Double)	Stainless Steel, Recessed w/Countertop Covers (2)
▼	▼	▼	▼	▼	Spice Rack	
▼	▼	▼	▼	▼	Storage	Slide Out Drawers below Dinette Seat
▼	▼	▼	▼	▼	Utility Tray	Tip Out
▼	▼	▼	▼	▼	Ventilator Fan	
▼	▼	▼	▼	▼	Water Purification System	Everpure®

BEDROOM

31RQ 33RQ 34RA 37RW 35RQ-P

▼	▼	▼	▼	▼	Bedsprad(s), Pillows, Pillow Shams, Throw Pillows	
▼	▼	▼	▼	▼	Lamps	Decorator Style, Wall-Mounted
▼	▼	▼	▼	▼	Mattress	Sealy® Innerspring w/Non-Slip Mat, Access to Storage below
▼	▼	▼	▼	▼	Mirror	Wall-Mounted (Back Wall)
▼	▼	▼	▼	▼	Wardrobe	Door Mirror, Carpeted Floor, Clothes Rod, Shelf, Auto-Light on 37RW & 35RQ, Drawers NA on 31RQ

BATHROOM

31RQ 33RQ 34RA 37RW 35RQ-P

▼	▼	▼	▼	▼	Clothes Rod	Removable
▼	▼	▼	▼	▼	Flooring (Vinyl)	
▼	▼	▼	▼	▼	Linen Cabinet	
▼	▼	▼	▼	▼	Makeup Lights (4 Bulb)	Two Sets on 37RW, 35RQ
▼	▼	▼	▼	▼	Medicine Cabinet	Mirrored Doors
▼	▼	▼	▼	▼	Mirror	Wall-Mounted
▼	▼	▼	▼	▼	Mirrors (2)	Wall-Mounted
▼	▼	▼	▼	▼	Shower	Flexible Shower Head, Molded Single-Piece Walls
▼	▼	▼	▼	▼	Shower Door (Folding)	
▼	▼	▼	▼	▼	Shower Door (Solid Glass)	
▼	▼	▼	▼	▼	Sink	Large Oval, Ledge Back
▼	▼	▼	▼	▼	Skylight	
▼	▼	▼	▼	▼	Tissue Holder	Surface Mount
▼	▼	▼	▼	▼	Toilet w/Sprayer	Marine Style
▼	▼	▼	▼	▼	Toilet* w/Sprayer	Porcelain, Marine Style
▼	▼	▼	▼	▼	Towel Bar	
▼	▼	▼	▼	▼	Towel Rack (3)	Built into Door
▼	▼	▼	▼	▼	Towel Rack (3)	
▼	▼	▼	▼	▼	Towel Ring	
▼	▼	▼	▼	▼	Vanity Stool	

EXTERIOR

31RQ 33RQ 34RA 37RW 35RQ-P

▼	▼	▼	▼	▼	Awning (Acrylic)	Contact Dealer for Model Availability
▼	▼	▼	▼	▼	Awning Rail	
▼	▼	▼	▼	▼	Bumpers	Rustproof, Steel Reinforced Molded Plastic
▼	▼	▼	▼	▼	Entrance Door Locks (2)	Latch, Deadbolt
▼	▼	▼	▼	▼	Entrance Door Step (Electric)	w/Door Jamb Switch

▼	▼	▼	▼	▼	Entrance Door w/Screen Door	
▼	▼	▼	▼	▼	Graphics	
▼	▼	▼	▼	▼	Holding Tanks (Heated)	
▼	▼	▼	▼	▼	Luggage Rack & Ladder	
▼	▼	▼	▼	▼	Mud Flaps	Rear
▼	▼	▼	▼	▼	Outlet	110-V, Curbside
▼	▼	▼	▼	▼	Porch Light	Interior Switch
▼	▼	▼	▼	▼	Sewer Hose & Storage Compartment	
▼	▼	▼	▼	▼	Shower	Pull-Out w/Water Pump Switch
▼	▼	▼	▼	▼	Stepwell Light	Interior Switch
▼	▼	▼	▼	▼	Storage Compartments	Floor & Side Lining, Steel Construction, Lights
▼	▼	▼	▼	▼	Tire Tools	Wrench, Leverage Bar, Tire Hoist Rod
▼	▼	▼	▼	▼	Trailer Towing Package w/Class II Hitch	
▼	▼	▼	▼	▼	Trunk*	
▼	▼	▼	▼	▼	Water Fill Door	Lockable
▼	▼	▼	▼	▼	Wheel Covers	
▼	▼	▼	▼	▼	Wheel Liners	Stainless Steel
▼	▼	▼	▼	▼	Wheels (Stylized)	

SYSTEMS

31RQ 33RQ 34RA 37RW 35RQ-P

▼	▼	▼	▼	▼	Air Conditioner (Central)	Remote Cooling Unit, Ceiling Distribution
▼	▼	▼	▼	▼	Batteries (2)	Deep Cycle RV, in Stepwell Compartment
▼	▼	▼	▼	▼	Electrical Control Center	110-V AC/12-V DC, 40-Amp, Remote Converter/Charger, AC/DC Circuit Breakers, 30-Amp, Power Cord
▼	▼	▼	▼	▼	Furnace	Ducted, Low Profile, Electronic Ignition, 35,000-BTU
▼	▼	▼	▼	▼	Furnace	Ducted, Low Profile, Electronic Ignition, 40,000-BTU
▼	▼	▼	▼	▼	Furnace Ducting System	Rigid, below Floor
▼	▼	▼	▼	▼	Generator Prep Kit	Gas Line (NA on 35RQ), Steel Floor, 12-V Wiring, Start/Stop Switch, Hourmeter Gauge
▼	▼	▼	▼	▼	Generator	6,500-Watt
▼	▼	▼	▼	▼	Generator	7,000-Watt
▼	▼	▼	▼	▼	Automatic Changeover Switch For Generator/Shoreline	
▼	▼	▼	▼	▼	Leveling System by HWH®	4-Point, Automatic Controls
▼	▼	▼	▼	▼	LP Tank	Permanent Mount w/Gauge
▼	▼	▼	▼	▼	Monitor Panel	Water, Holding & LP Tank Levels, Battery Condition Gauge, Water Heater Ignition Switch, Water Pump Switch, Generator Start/Stop Switch, Generator Hourmeter Gauge, Located in Galley
▼	▼	▼	▼	▼	Power Cord	50-Amp., Mandatory w/Some Options
▼	▼	▼	▼	▼	Water Fill	Pressurized City Hook-Up w/Diverter Valve
▼	▼	▼	▼	▼	Water Heater	6-Gal., Electronic Ignition
▼	▼	▼	▼	▼	Water Heater (Motoraid) & Rear Automotive Heater	
▼	▼	▼	▼	▼	Water Heater Winterization By-Pass Valve	
▼	▼	▼	▼	▼	Water Pump (Demand)	3 Switches

SAFETY

31RQ 33RQ 34RA 37RW 35RQ-P

▼	▼	▼	▼	▼	Assist Handle	Interior
▼	▼	▼	▼	▼	Assist Handle	Exterior
▼	▼	▼	▼	▼	Assist Strap	Interior
▼	▼	▼	▼	▼	Carbon Monoxide Detector/Alarm	
▼	▼	▼	▼	▼	Fire Extinguisher (10-B.C.)	
▼	▼	▼	▼	▼	Ground Fault Interrupter	
▼	▼	▼	▼	▼	LP Leak Detector/Alarm	
▼	▼	▼	▼	▼	Smoke Detector/Alarm	

Standard ▼, Optional ▼

*Not all options available in combination. See dealer for details.

Winnebago Industries' continuing program of product improvement makes specifications, model availability and prices subject to change without notice.

Home. It's What We Do Best.

For 35 years, we have led the quest to create the best home on the road. As a result, Winnebago Industries has the largest and most advanced motor home manufacturing complex in the world. Computer-aided design and manufacturing controls our building process, from pre-testing to the finishing touches. We also run extensive tests on joint stress, climate performance and road conditions.

You have an open invitation to visit us and see what sets a Winnebago Industries



motor home apart from the rest. Call us at (515) 582-3535 for more information.

Protect The Best Years Of Your Life.

Unbelievably, Winnebago Industries is one of the only RV manufacturers to use automotive, 3-point seat belts on most models. Our motor homes also have detectors for carbon monoxide, LP leaks and smoke. It's all part of our extra effort to create a safe environment.



No Surprise That Our First Innovation Had To Do With Comfort.

Thirty-five years ago, our first task was to create a comfortable seat cushion. Today we continue with a new strategy to insure our motor homes are the most livable: Home Comfort Design. It pushes us to make the best use of space for living, storage and style. You'll feel the difference.

Get Your Promises In Steel.

Each motor home we make has a steel cab substructure that protects you and assures the integrity of the vehicle for years. Steel may seem like common sense, but the fact is, many others still use wood for their foundations and sometimes even their firewalls.

Beauty Is Built In.

We're proud to say we produce many more of our own components. Sure, we could buy them off the shelf. But by building our own furniture and cabinetry, we guarantee they fit exactly. It also allows us to provide things like Scotchgard™ Protector as standards. We're a company that believes this kind of perfection is important.

You're In Good Company.

We make it easy to be an enthusiast. With the Winnebago-Itasca Travelers (WIT) Club, you can meet Winnebago Industries owners in your area and access special services like professional trip routing and mail forwarding. The WIT Club Magazine will keep you up-to-date on rallies and caravans.



The fun continues when you join Winnebago Motorsports. Created to pay homage to the world of motorsports, you'll see us everywhere from car races to speedboat events. We provide hospitality at events, a full compliment of racing merchandise and chances to meet the racing celebrities.



The Great Wall Of Winnebago.

Every Winnebago Industries motor home has our innovative Thermo-Panel® wall structure insulating and strengthening the shell without adding a lot of weight. When the cold snap comes through, you'll be glad we thought of it.

You Are Not Alone.

If you need help on the road, Winnebago Industries' free round-the-clock Road Assistance Service is a phone call away. It's part of our Preferred Care program taking care of you down the road.



We also have one of the most comprehensive warranty packages in the industry. The standard warranty protects your motor home for 12 months or 15,000 miles. At expiration of the basic warranty, the coverage continues for 36 months/36,000 miles on structural components. A 10 year limited warranty protects the roof and walls, and the 100% stain-free carpeting carries an extensive stain and wear warranty. We can provide this kind of coverage because our vehicles last. In fact, they have the highest overall resale value of competitive motor homes on the road.

VECTRA™

For Sales and Service, Contact: