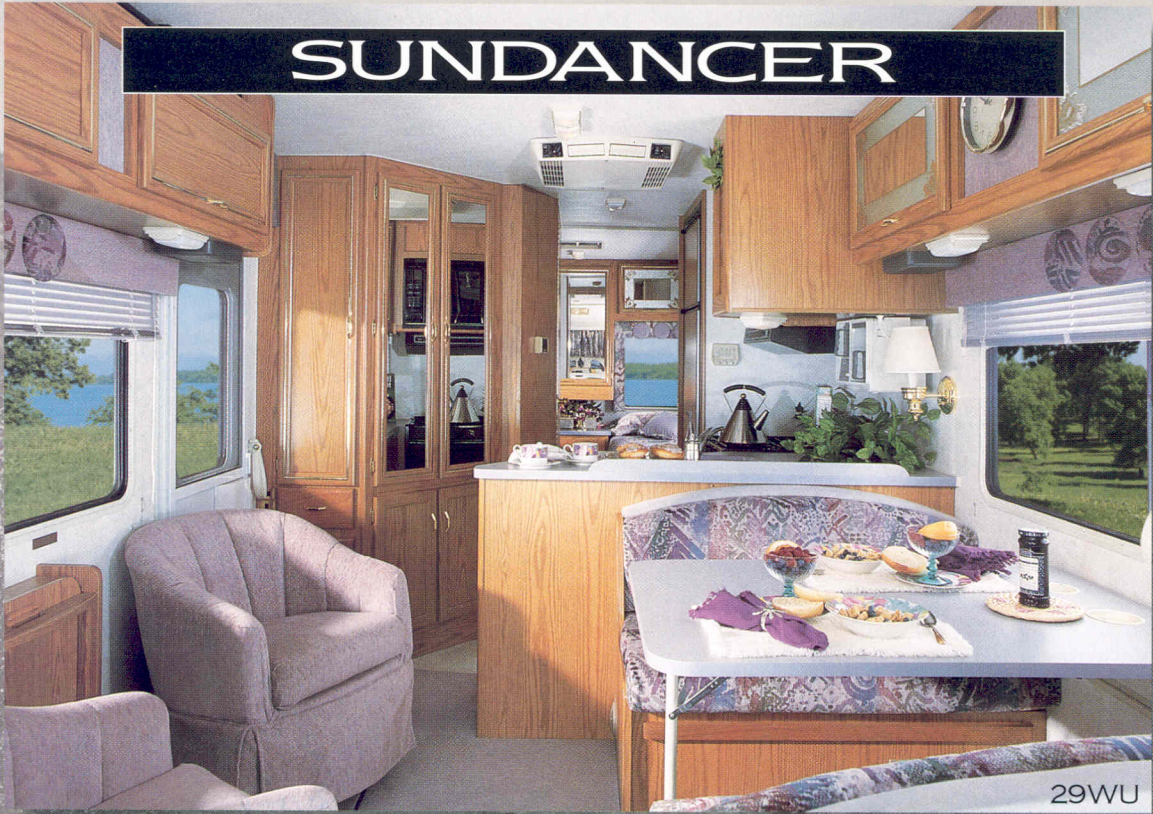


SUNDANCER



29WU

 ITASCA.



29WQ-DL

29WU

BEAUTY

From the ground up.

From the moment you step inside, you'll agree that this is no ordinary Class-C motor home. The 1996 Itasca Sundancer® offers comforts you'd expect to find in larger Class-A motor homes, with all the driving benefits of a Class-C motor home. Sundancer and the available DL upgrade package truly offer the best of both worlds.

But versatility isn't the only thing this motor home is known for. From the ground up, Sundancer is built to withstand the test of time. For instance, our fabrics must not only pass industry standards, but also must pass our own double rub test (a machine mechanically simulating getting in and out of a seat over 15,000 times to see how the fabrics wear). And to ensure good looks for years to come, we only offer carpet with the color extruded directly into the fiber, rather than just dyed on the surface. This attention to lasting beauty is called Home Comfort Design.

And that's just the interior. Outside you'll find similarly tried and tested components like Winnebago Industries' Thermo-Panel® sidewall design. From top to bottom, both inside and out, Sundancer is built to surpass the highest standards anywhere. Yours.





Beautiful, handcrafted overhead cabinetry with raised panel doors is just one of the extras setting Sundancer with the DL upgrade package apart. All Sundancer models include an abundance of interior storage space, large, tinted picture windows with mini blinds and a choice of color coordinated fabrics treated with Scotchgard™ Brand Soil Repellent. For added convenience, the plush couch quickly converts to a bed for additional sleeping space.



29WQ-DL

The driver's area includes deluxe captain's chairs, and a solid wood console with cup holders. The available over-the-cab entertainment center includes a 19" color television built into custom cabinetry and a slideout single overhead bunk. Also available is a VCR with switching system to allow viewing on either the front TV or a TV connected to the rear interior jack.



Inside the bath you'll find a host of standard features, like the mirrored medicine cabinet and brass accented towel racks built into the door.



Sundancer's well-planned interior offers you a variety of available configurations. Among the choices are a forward facing couch or a roomy dinette. As an added benefit, both can be converted to comfortable sleeping space.



Standard galley features include a touch control microwave oven, 3-burner range with high-output burner and oven, refrigerator/freezer, stainless steel double sink and vinyl flooring for easy clean-up. A galley counter extension is also featured on this model.

STYLE

You can see it in the details.

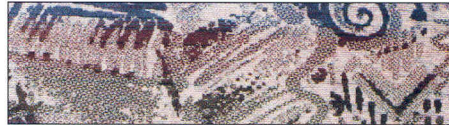


29WQ-DL

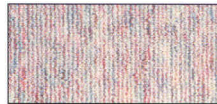
This rear bedroom configuration offers everything you need to feel right at home — beautiful bedspread with matching pillow shams and window treatments, reading lights, mirrored overhead cabinetry, nightstand, shirt closet and large underbed storage area.



HARBOUR*



MAIN



ACCENT



CARPET



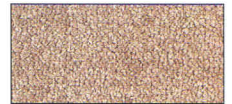
SAND DOLLAR*



MAIN



ACCENT



CARPET



29WQ

Twin bed floorplan includes overhead storage space and a center nightstand with drawers below and a shirt closet above. A wardrobe and another shirt closet are located at the foot of the beds.



TUSCANY* (DL)



MAIN



ACCENT



CARPET



WINTER MOSS* (DL)



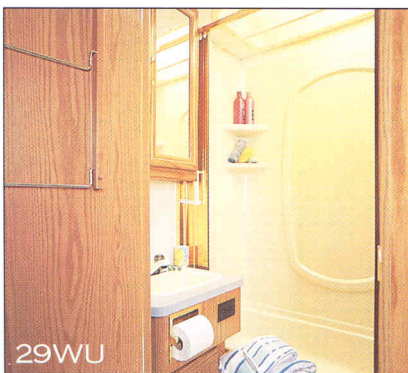
MAIN



ACCENT



CARPET



29WU

The large shower thoughtfully includes a flexible shower head and is available with a skylight for added headroom and natural light.

WATERFORD OAK



PICKLED ASH (DL)

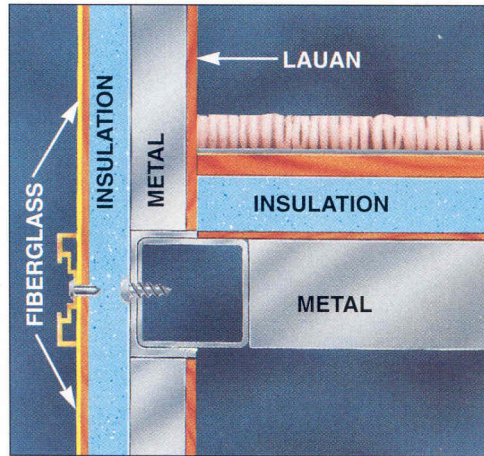


*The style of chair shown is not available on the motor home you purchase. It is shown to represent fabric color and pattern only.

STRUCTURE

A solid reason to drive a Sundancer.

The foundation is where Winnebago Industries' 35-plus years of experience really shows. Sundancer is built on a solid steel foundation welded directly to the chassis. There's no stronger way to build a motor home. Itasca's famous Thermo-Panel® sidewall construction completes the package, combining good looks with unmatched strength and insulation.



The specially designed floor structure and joint lock support the weight of the sidewall, giving Sundancer unbelievable strength and durability.

For added safety, upper cabinets are secured to metal plates in the sidewall and roof.

Welded aluminum framework is strong enough to pass a drop test, yet light to maximize fuel efficiency and weight-carrying capacity.

Our exclusive interlocking joint system connects the floor and walls to make a more durable, better-sealed body.

Radius corners on compartment doors eliminate sharp edges.

All welds are painted to prevent corrosion.

More storage space has been added including this new exterior compartment.

The metal substructure is laser-aligned and welded directly to the chassis frame rails to provide a square foundation.

Molded wheel wells are non-corrosive and absorb sound better than metal.

The basement has heated compartments for the fresh water tank and holding tanks.

Seamless rotocast holding tanks make the best use of space and improve weight distribution.

Every unit undergoes a water test simulating a rainfall of 50 inches per hour.

Appliances are secured with steel tie-downs, an exclusive Winnebago Industries safety feature.



Exterior compartment doors are laminated with fiberglass skin on both sides and block foam insulation in the center for energy efficiency and sound absorption.

The new standard service center puts the water fill, dump valves, power cord and water pump switch in one convenient, heated compartment.



Sundancer's locking, pass-through compartment provides an abundance of easily accessible storage for larger items. Durable weatherproof gaskets and lined floors keep your gear safe and dry.

29WQ-DL

We invented Thermo-Panel® sidewall construction which combines light weight, structural integrity and durability.

All units are pre-wired for an available roof air conditioner.

We add strategically placed steel angles to reinforce roof and wall joints.

Only Winnebago Industries adds a steel pillar in the bunk area to increase rigidity and occupant safety.

Each unit receives a final inspection in which we check all dash functions as well as the fit and finish of the entire vehicle.

Windows have a non-hardening butyl sealant to prevent leakage.

An entertainment center and slideout bunk are available. Standard models have a front window in the bunk area.

Smooth, one-piece fiberglass skin is strong, easy to clean, and free of exposed fasteners and bolts.

Our locks are endurance and corrosion tested.

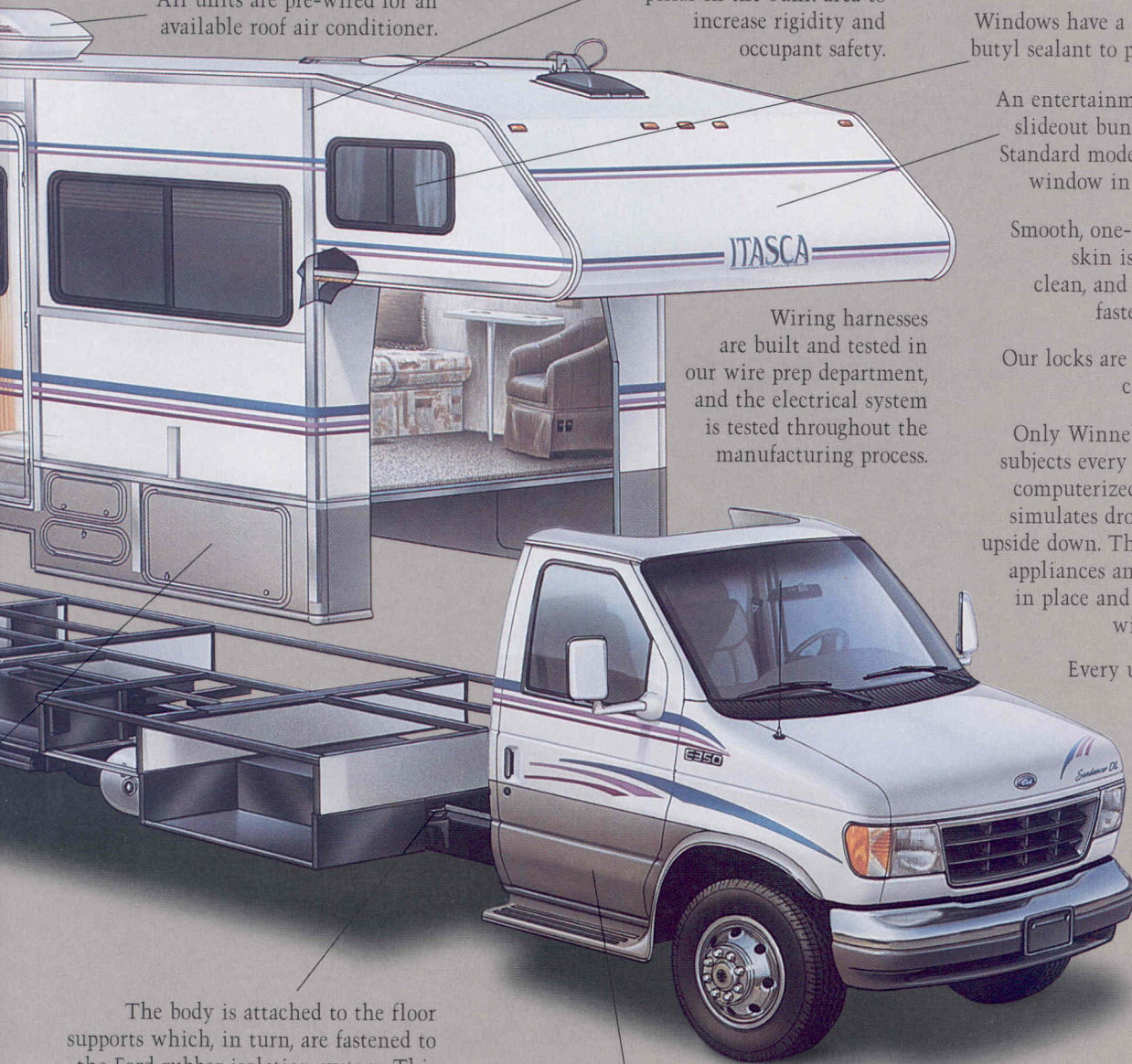
Only Winnebago Industries subjects every new series to a computerized drop test that simulates dropping the unit upside down. This ensures that appliances and cabinets stay in place and that doors and windows operate.

Every unit is checked by computer for wheel alignment and checked at 75 chassis points.

Foam sheet insulation prevents energy leaks and gaps in sidewalls.

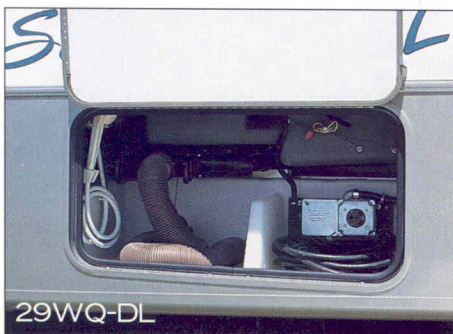
All models are widebodies with full basement storage.

Wiring harnesses are built and tested in our wire prep department, and the electrical system is tested throughout the manufacturing process.



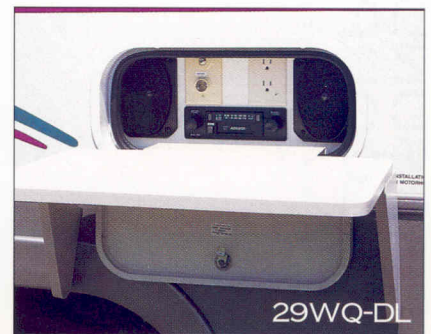
The body is attached to the floor supports which, in turn, are fastened to the Ford rubber isolation system. This reduces noise and vibration and helps provide a more enjoyable ride.

Color-coordinated valance is part of the available DL package.



The service center neatly contains dump valves, 110 volt electrical cord and wash station with pump switch in one locking compartment.

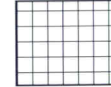
Our available patio entertainment center includes an AM/FM/cassette radio with two speakers, TV jack, electrical outlets and a handy, removable table.



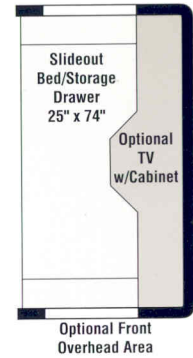
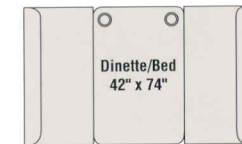
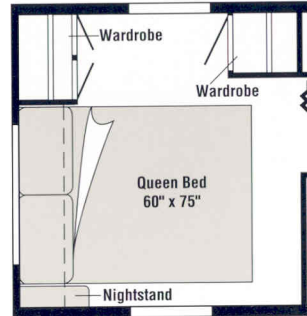
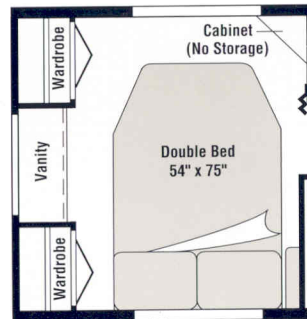
1996 SUNDANCER FLOORPLANS

Choose from thirty-eight floorplan combination possibilities

Note: Dimensions shown are for sleeping space only and dashed lines denote overhead storage areas.

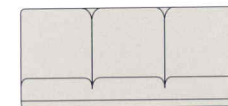
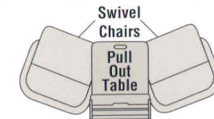
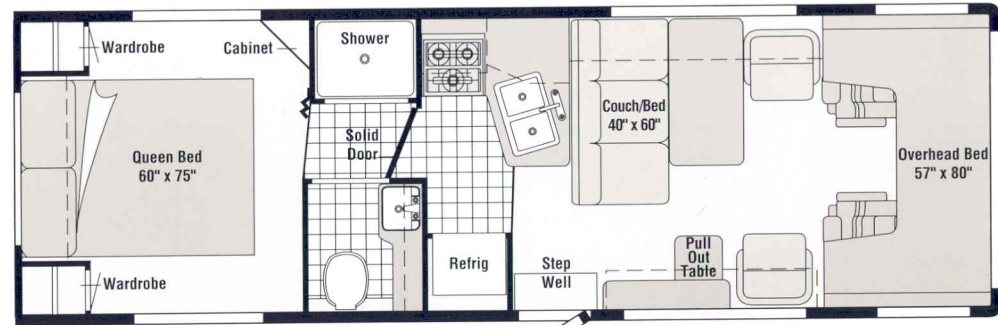
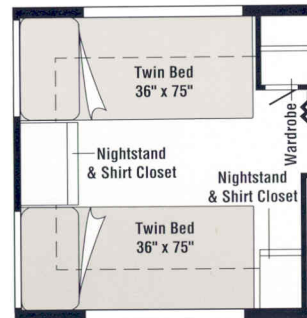


Standard Vinyl



29WQ

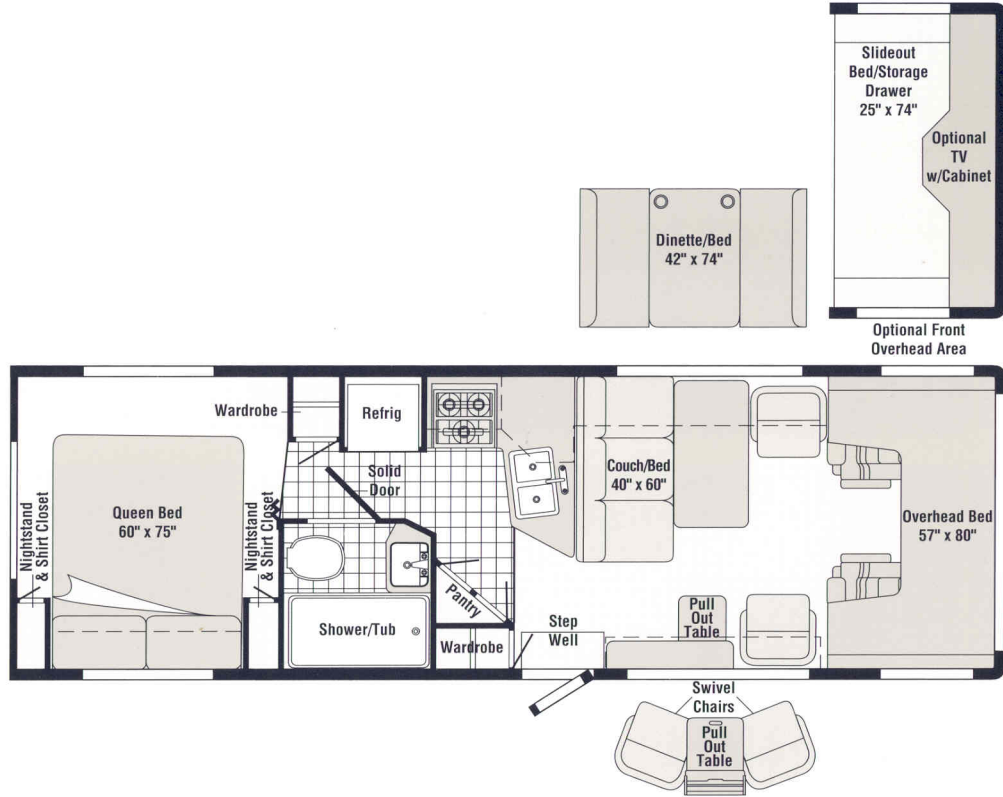
29'4"	Length
8'4"	Exterior Width
6'7"	Interior Height
8'	Interior Width
55 gal.	Fuel Capacity
37 gal.	Fresh Water w/Heater
69 gal.	Holding Tank Capacity (2 Tanks)
42 lbs.	LP Capacity
190"	Wheelbase



Couch/Bed
40" x 67"

29WU

29'4"	Length
8'4"	Exterior Width
6'7"	Interior Height
8'	Interior Width
55 gal.	Fuel Capacity
37 gal.	Fresh Water w/Heater
63 gal.	Holding Tank Capacity (2 Tanks)
42 lbs.	LP Capacity
190"	Wheelbase



1996 SUNDANCER

29WQ	29WU	
29'4"	29'4"	Length
190"	190"	Wheelbase
55 gal.	55 gal.	Fuel Capacity
37 gal.	37 gal.	Fresh Water Capacity w/Heater
69 gal.	63 gal.	Holding Tank Capacity (2 Tanks)
42 lbs.	42 lbs.	LP Capacity
11'	11'	Exterior Height w/Roof Air†
8'4"	8'4"	Exterior Width ^Δ
6'7"	6'7"	Interior Height
8'	8'	Interior Width
70 cu. ft.	70 cu. ft.	Exterior Storage (Std.)
12,400 lbs.	12,400 lbs.	GVWR

AUTOMOTIVE

29WQ 29WU

- ● **Chassis - Ford** 7.5L 460 V-8 Fuel-Injected Gasoline Engine, Automatic Transmission w/Overdrive & Cooler, Front Suspension: Coil Spring, Rear Suspension: 2-Stage Multi-Leaf Spring, 650-CCA Battery/130-Amp. Alternator
- ● **Tires & Spare (Radial)**

DL UPGRADE PACKAGE

29WQ 29WU

- ○ **Deluxe Upgrade Package**
Exterior: Wheel Liners, Electric Step, Automotive Rear Bumper, Rear Wheel Trim, Rocker Panels, Radius Transition Panel, Additional Graphics & Paint, Fiberglass Running Boards w/Wheel Well Trim, Dump Valve/Sewer Hose Compartment
Interior: Deluxe Cab Seats, Upgraded Cab Trim Panels, Adjustable Reading Lights, Soft Ceiling Material, Raised Panel Cabinet Doors (Overhead), Upgraded Wall Lamp, Upgraded Window Treatment, Range Hood w/Monitor Panel, Upgraded Furniture Style, Lounge Pillow (Couch Module), Black Galley Appliances

DRIVER CONVENIENCES

29WQ 29WU

- ● **Battery Charge Control** Dual, Automatic
- ● **Beverage Holder**
- ● **Cab Carpet & Rubber Floor Mats**
- ● **Convenience Tray**
- ● **Cruise Control**
- ● **Divider Curtain** Cab
- ● **Dome Light**
- ● **Heating/Air Conditioning** Automotive Blend Air System
- ● **Hood Release** Interior
- ● **Mirrors (Rear View)** Exterior, Body Matching
- ○ **Mirrors (Rear View)** Exterior, Electric Remote w/Defrost
- ○ **Power Door Locks & Windows**
- ● **Seats w/3-Point Retracting Seat Belts** Armrests, Recline, Swivel/Slide Pedestal, Lumbar Support
- ● **Start Circuit** Auxiliary
- ● **Steering** Power Assisted w/Tilt Wheel
- ● **Sunvisors**

29WQ 29WU

- ● **Trim Panels** Driver & Passenger Doors (Chassis Supplied)
- ● **Windshield Wipers (Intermittent)**

ENTERTAINMENT

29WQ 29WU

- ○ **Entertainment Center (Patio)** AM/FM Radio, Cassette Deck, Speakers (2), DC Receptacle, 110-V Outlet, TV Jack, Radio Antenna, TV Table, Locking Door
- ○ **Inverter*** 110-V for TV/VCR
- ● **Stereo w/Digital Clock (Cab)** Electronic Tune AM/FM Cassette Deck w/Seek, Speakers (4)
- ○ **TV (19" Color)* & VCR w/Remote** Switching System, w/Slideout Single Bunk
- ○ **TV (19" Color)* w/Remote** w/Slideout Single Bunk
- ● **TV Enhancement Package*** Antenna (Amplified), DC Receptacles (2), Interior Jacks (2), Coax Wiring, Cable Input, Bedroom TV Shelf or Stand

INTERIOR

29WQ 29WU

- **Assist Handle** Wood
- ● **Assist Strap**
- ● **Bed (Front Overhead)** Sliding Side Windows, Privacy Curtain, Storage Cabinet
- ● **Carpeting w/Pad** Stain Resistant w/Scotchgard™ Protector
- ● **Ceiling Lights**
- ● **Ceiling Vent** Powered, Bathroom
- ○ **Ceiling Ventilator Fan** Powered, Front Bunk
- ● **Ceiling Vents** Non-Powered, Bedroom, Front Overhead Bed & Galley
- ● **Clock** Decorator Style
- ● **Color Themes (Interior)** Choice of Harbour (Grey), Sand Dollar (Taupe), Both w/Waterford Oak
- ○ **Color Themes (Interior) DL Upgrade** Choice of Winter Moss (Green), Tuscany (Taupe), Both w/Pickled Ash
- ○ **Ladder*** Overhead Bed
- **Wardrobe** Carpeted Floor, Clothes Rod

GALLEY

29WQ 29WU

- ○ **Coffee Maker**
- **Counter Extension** Flip-Up
- ● **Flooring (Vinyl)**
- ● **Galley Rail**
- ● **Microwave Prep Kit**
- ● **Microwave Oven** Touch Control
- **Pantry Closet**
- ● **Range Hood** w/Light, Powered Vent
- ● **Range w/Oven**
- ● **Refrigerator/Freezer** Double-Door, Flush Mounted
- ● **Sink (Double)** Stainless Steel, Single Control Faucet, Recessed w/Countertop Cover
- ● **Spice Rack**

BEDROOM

29WQ 29WU

- ● **Bedsprad(s), Pillows, Pillow Shams**
- ● **Mattress(es)** 'Deluxe Supreme'
- ● **Underbed Storage** Gas Spring Bed Lifts
- ● **Wardrobe(s)**

BATHROOM

29WQ 29WU

- ● **Flooring (Vinyl)**
- ● **Lavatory Cabinet**
- ● **Medicine Cabinet** Wood-Framed Mirrored Doors
- **Mirror** Wall-Mounted
- **Shower** Flexible Shower Head
- ● **Shower/Tub** Flexible Shower Head
- ● **Shower Door** Folding
- ● **Sink** Rectangular, Molded Soap Dishes
- ○ **Skylight**
- ● **Tissue Holder**
- ● **Toilet** Marine Style
- ● **Towel Rack (3)** Built into Door

EXTERIOR

29WQ 29WU

- ● **Assist Handle***
- ● **Awning Rail**
- ● **Bumper** Front: Chrome
- ● **Entrance Door Step (Manual)**
- ○ **Entrance Door Step* (Electric)**
- ● **Entrance Door w/Screen Door**
- ● **Holding Tank Compartment** Heated
- ● **Ladder**
- ● **Mud Flaps** Rear
- ● **Outlet** 110-V, Curbside
- ● **Porch Light** Interior Switch
- ● **Running Boards (Aluminum)**
- ● **Sewer Hose** w/Storage
- ● **Storage Compartments** Locking Doors
- ● **Tire Tool** Lug Wrench
- ○ **Trailer Towing Package** w/Class II Hitch
- ● **Trailer Wiring Extension**
- ● **Wash Station** Pull-Out w/Water Pump Switch
- ● **Wheel Covers**

SYSTEMS

29WQ 29WU

- ● **Air Conditioning Pre-Wiring** Roof
- ○ **Air Conditioner** Roof, 14,800-BTU
- ● **Battery (Auxiliary)** Deep Cycle
- ● **Battery Disconnect System**
- ○ **2nd Battery (Auxiliary)** Deep Cycle
- ● **City Water Hook-Up**

29WQ 29WU

- ● **Electrical Control Center** Automotive DC Fuses, AC Circuit Breakers, 9-Amp. Battery Charger, 40-Amp. Converter, 25' 30-Amp. Power Cord
- ● **Furnace** Ducted, Low Profile, Electronic Ignition, 30,000-BTU
- ● **Generator Prep Kit*** Gas Line, 12-V Wiring
- ○ **Generator** 4,000-Watt, Hourmeter, 110-V Wiring, Switches
- ● **Monitor Panel** Water, Holding & LP Tank Levels, Battery Condition Gauge, Water Pump Switch, Water Heater Ignition Switch w/Pilot Indicator Light, Located in Galley
- ● **Water Drain System** through Floor
- ● **Water Fill Door** Lockable
- ● **Water Heater** 6-Gal., Electronic Ignition
- ○ **Water Heater (Motoraid) & Rear Automotive Heater**
- ● **Water Pump (Demand)**

SAFETY

29WQ 29WU

- ● **Carbon Monoxide Detector/Alarm**
- ● **Fire Extinguisher (10-B.C.)**
- ● **Ground Fault Interrupter**
- ● **LP Leak Detector/Alarm**
- ● **Smoke Detector/Alarm**

† The height of each model is based on the curb weight of a typically equipped unit on the standard chassis. The actual height of your vehicle may vary by as much as 2" depending on chassis or equipment variations.

△ The Sundancer floorplans feature a widebody design - over 96". In making your purchase decision, you should be aware that some states restrict access on some or all state roads to 96" in body width. Before making your purchase decision, you should confirm the road usage laws in the states of interest to you.

- Standard
- Optional

* Not all options available in combination. See dealer for details.

Winnebago Industries' continuing program of product improvement makes specifications, equipment, model availability and prices subject to change without notice. Comparisons to other motor homes are based on the most recent information available.

Itasca motor homes can be found all over the country. But they're built in Forest City, Iowa, at the most advanced RV production facility in the world. The vast majority of components found in Itasca motor homes are developed and manufactured here. Free tours of the factory are available. For tour information call Winnebago Industries at (515) 582-3535.



When you buy an Itasca, you're buying much more than just a great motor home. You're also getting the most comprehensive warranty package in the industry. No other motor home manufacturer offers the coverage Winnebago Industries' customers receive.

For starters, every Itasca's basic warranty includes coverage for 12-months/15,000 miles. And unlike many manufacturers' policies, this warranty is transferable at no charge. Our sidewalls and backwall are so strong, they're covered by a limited warranty for 36-months/36,000 miles. The roof is covered by a standard 10-year limited parts and labor warranty, by far the longest roof warranty anywhere. And unlike warranties on some motor homes, our basic warranty also applies to all appliances and equipment we install, giving you the convenience of one-stop service. Service personnel at our dealerships receive extensive factory training, so they're up to date on all models and equipment.

Down the road, it's nice to know we have an extensive parts warehousing and distribution system which makes parts readily available, even for older models.



Winnebago Industries is making a big impact at raceways all across the country. A growing number of NASCAR® and NHRA® drivers are part of the Winnebago Motorsports Team, but this team isn't just for drivers. Many Winnebago Industries motor home owners have joined the team as well. The Winnebago Motorsports Team provides members with a quarterly newsletter, a racing merchandise catalog full of exciting products and the opportunity to participate in special on-track events at selected races. Winnebago Industries is proud to have been named the Official Motor Homes of NASCAR, but is even more proud of the Winnebago Motorsports Team and its growing membership.

For Sales and Service Information Contact:



In addition to the standard warranty package, a free one-year membership in the Winnebago Industries Preferred Care Program is included with every 1996 Itasca motor home. This program provides you with many benefits, including technical phone assistance and free 24-hour referral to any of our 20,000-plus factory authorized dealer locations across North America. After the first year, membership in the Preferred Care Program can be extended through membership in the WIT Club.

The Winnebago-Itasca Travelers Club (WIT) offers our RV owners a great magazine, professional trip routing, mail forwarding and available Preferred Care for their motor homes. A highlight of the year is the Grand National Rally held in Forest City each summer. For more information, see your Itasca dealer or call (515) 582-6874.



It's been said that three factors will determine the success of any business — location, location, location.

With a Commercial Vehicle from Winnebago Industries, you're guaranteed the best location possible — anywhere you have customers. We design and manufacture custom vehicles in a variety of models and sizes to meet your exact requirements. From mobile medical clinics to portable jails, we can put a commercial vehicle to work for you. Contact your dealer for more information.