

1 9 9 7

Suncruiser®



34RQ

 **ITASCA**®

Unfortunately, many vacations are hardly what you'd call relaxing. After all, it's hard to take your mind off

your worries when you're constantly thinking about accommodations, rental cars and restaurants. That's why the 1997 Itasca Suncruiser is such a sensible way to vacation. After all, with Suncruiser, you don't have to worry about the details. Every model is expressly designed for extended travel and living, making you feel right at home with custom crafted furniture, beautiful fabrics and window treatments, handcrafted cabinetry, generous storage spaces, and the comforts of home. Each Suncruiser includes other advantages not so readily apparent to the eye, like the longest and strongest warranty package in the industry. If you're interested in a more relaxing way to travel, look into any of the eight 1997 Suncruiser models. You'll never see vacations the same way again.

TAKE A VACATION FROM ORDINARY VACATIONS.



34RQ



34RQ

Our slideout models take the comfort Suncruiser is known for and expand on it. In a matter of seconds, a revolutionary HWH® slideout mechanism extends the living area. Overhead cabinetry is available for added storage space. Six-inch support rails and integrated floor tie-downs result in a structurally superior slideout that will provide years of trouble-free use.



Everything you need to know about Suncruiser interiors can be summed up in three words — Home

Comfort Design. This is the process our interior designers use when creating each decor; a process exclusive to Winnebago Industries motor homes. Home Comfort Design means selecting high quality fabrics, window treatments, wall coverings and carpeting, and subjecting them to a number of tests to ensure they meet our discriminating standards. One of these tests is our double-rub test where a machine mechanically simulates getting in and out of a seat up to 30,000 times to see how the upholstery fabrics wear. In addition to these quality tests, all fabrics and carpet must be stain-resistant, and all carpet must have a hypoallergenic backing with the color directly extruded, not dyed, into each fiber. You see, we're not just designing for today. We're creating motor homes that will look beautiful years from now. That's Home Comfort Design.

WE LOOK AT INTERIORS DIFFERENTLY.



34RQ

The Norcold refrigerator/freezer has been redesigned to make the controls more accessible. It is available with an icemaker on most models.



35WQ

Presenting the perfect kitchen — all the features you want, right at your fingertips. It includes a side-by-side refrigerator/freezer available on most models, 3-burner range with oven, 1.3 cubic foot touch-control microwave, double sink with covers, vinyl flooring, Everpure® water purification system and available coffee maker with clock/timer.



34RQ

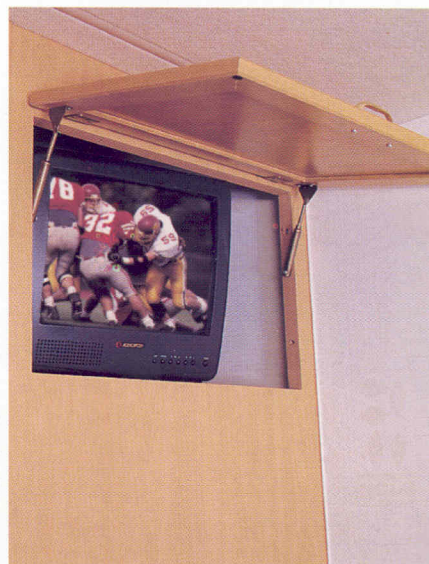
All your cooking supplies are within easy reach when stored in our redesigned roll-out pantry with locking slide system and adjustable shelving. (NA on 30WQ, 32WQ, 34WA)



34RQ

No matter which bedroom floorplan option you choose, you'll rest easy on a new Serta innerspring mattress. The bedroom's warm cabinetry and wainscoting perfectly complement the coordinated window treatments, bedspread and pillows. Other bedroom features include individual reading lights and nightstands (on most models), and new larger tinted windows. A roomy storage area beneath the bed rounds out the bedroom's features, and is easily accessible with the help of gas springs.

Late night movie watching has never been this comfortable. The available 13" color TV with remote (NA on 30WQ, 32WQ, 35WQ) is the perfect finishing touch, neatly resting on a beautifully finished shelf. An available remote controlled VCR with switching system allows video viewing on either the available front or rear TV.



34RQ

If we were all the same, we'd all have the same needs and drive the same motor home. Fortunately, that's

WE BUILT ONE WITH YOUR NAME ON IT.

not the case. That's why we offer so many different Suncruiser models and over 40 possible floorplan combinations. Choose from a standard-width slideout, a widebody or a widebody slideout. All of these styles offer great looks, incredible comfort, impressive basement storage and, most of all, Winnebago Industries' stringent quality standards. So take your time and explore all the options open to you. Soon you'll be saying what countless travelers have said before you, "It's like they designed the Suncruiser just for me." Which is exactly what we did.



34V/K

Suncruiser is much more than a comfortable place to live. It's also extremely comfortable to drive. New features include wider driver and passenger seats, a redesigned beverage/convenience tray, rotary automotive heating and air conditioning controls, and available fog lamps.



34WK

Our six widebodies, including five exciting new models, expand on the success of SunCruiser, offering even roomier living areas and more available seating arrangements.



Presenting a bedroom fit for a king. A Serta king mattress is standard on the 34WK and 34WK pusher models. This is just one of many bedroom configurations SunCruiser offers.

34WK

WE'VE LEARNED A LOT IN 38 YEARS.

When you've built recreational vehicles for as long as we have, you can't help but learn a thing or two about travel. We've taken the things we've learned, and applied them to our designs. Over the years, some improvements were the result of new materials that simply weren't available before, and some were made because of innovative designs or customer requests. Each of these changes took our motor homes another step closer to perfection. This year, we've made extensive changes in the lighting area. As a result of extensive dark-room testing on our motor homes, we were able to significantly improve interior lighting by adding aisle courtesy lights and installing new opticlear lenses on all lights beneath overhead cabinets to redirect lighting. And that's just one of many refinements you'll find inside the new Suncruiser. Our goal is to continually find ways to make our motor homes the best on the market. Once again, we've done just that.



32WQ

Suncruiser's bathroom is both spacious and well-appointed. Features include medicine and lavatory cabinets, make-up lights, large sink, towel rack recessed into the door, and a glass or pleated shower door.



32WQ

Our new opticlear lenses on the under-cabinet lights enhance the dinette lighting and lighting in other areas throughout the coach.



32WQ

To provide more light and headroom, the shower skylight has been increased in size and includes an auxiliary light. The shower includes a new one-touch open/close tub drain (N/A on 34RQ, 34WA) and a flexible shower head. (Fixed head on 35WQ, 37RW)



32WQ

This handy drawer underneath the dinette seat offers access to additional storage.



For year-round comfort, all Sun Cruiser models feature a thick, insulated roof with ducting and wiring already in place for the available air conditioning system. New dampening, directional air conditioning vents in the ceiling assure optimum air distribution throughout the coach. The motoraid water heater and rear automotive heater (NA 34WK-P) provide supplement heating while on the road by utilizing the heat created by the engine. Warm air is ducted through in-floor registers.



Store clothing and accessories in the beautifully finished wardrobe with mirrored doors, carpeted flooring, hanging rod and a convenient light.

There's always plenty of sleeping space inside the Sun Cruiser. In addition to the bedroom, both the couch and dinette easily convert to beds adding additional sleeping space for up to four people.



Suncruiser is much more than just a comfortable motor home. It's also remarkably durable, featuring construction advantages you just won't find on many competitively priced motor homes. Like our unique twelve-step electrocoating process. Or our one-of-a-kind floor and ceiling joints. Or our welded framework that's strong enough to pass a drop test. Or our rugged HWH® slideout mechanism. You get the point. There's simply no better way to build a motor home.

MOTOR HOMES BUILT TO THE TOUGHEST STANDARDS IN THE INDUSTRY.



32WQ

Suncruiser offers conveniences designed to make your life on the road a little easier. For instance, the available driver's door includes a valance step and grab handle for quick and easy access.



32WQ

Why worry about your batteries? Suncruiser's available 10-watt solar panel trickle charges your batteries, extending their life.



32WQ

This convenient compartment neatly organizes all service items for easy use.



33WQ

Whether you're grilling hamburgers or just relaxing outside, our available patio entertainment center adds to your enjoyment. It includes an AM/FM stereo cassette with two speakers, TV jack, electrical outlets and a large, removable table.



34RQ

Suncruiser's basement design allows you to pack even large, bulky items. Our storage compartments feature weatherproof gaskets, lined floors and sides, and non-corrosive locks to guarantee years of rugged service. For easier opening and increased durability, all exterior storage compartment doors are full-hinged panels with gas strut supports on most doors and a single paddle latch design.





Any description of the SunCruiser would be incomplete without a close look at the exterior. After all, that's where some of our biggest advantages lie. For starters, all SunCruiser models utilize Winnebago Industries' exclusive Thermo-Panel® design on the sidewalls and backwall for unmatched strength, insulation, sound absorption and good looks. This construction method is so strong, it's backed by a 36-month/36,000 mile limited warranty. Underneath SunCruiser's smooth, one-piece fiberglass skin you'll find welded framework that's strong enough to pass a drop test. The single-piece fiberglass roof comes with our industry-leading 10-year limited parts and labor warranty.

The available electronic remote control mirrors include a defrost element for cold weather driving conditions.



SunCruiser includes many safety features like a new high mount brake light on the backwall, three-point safety belts mounted in a steel framework, a larger windshield mounted in steel, halogen headlights for higher visibility, and recessed running lights. A custom patio awning is available to protect you from the hot sun or a cool rain. The weather-resistant awning retracts to the awning rail when not in use.

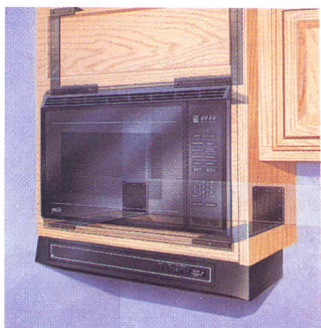
awning rail when not in use.



As you've probably noticed by now, we're quite proud of the Suncruiser. Both inside and out, it's

built to the highest standards in the motor home industry. This page lists quite a few of the features you might not notice by simply stepping inside a Suncruiser. Even though they're not readily apparent, we thought you'd be glad to know these features are there.

DESIGNED TO PASS THE TOUGHEST TEST OF ALL. TIME.



Select appliances are secured with steel tie-downs, an exclusive Winnebago Industries safety feature. It's not something we're required to do. It just makes sense.



Our three-point seat belts connect directly to the seat frame in the cab and are bolted to the steel cab substructure. Always use your seat belt.



A third exterior brake light is a safety feature other manufacturers only put on high-end models. We have one on all our motor homes.



Winnebago Industries has been designated a Qualified Vehicle Modifier by Ford Motor Company. The QVM program promotes high standards for manufacturers who build motor homes on Ford chassis, and we are proud to be one of the first motor home manufacturers to qualify.

Meeting QVM standards is a part of our policy of continuous quality improvement.

Computer simulated or physical drop testing, performed on various models, is unique to Winnebago Industries. This testing aids in evaluating structural integrity, panels/panel joints, appliance attachments and window/door operations.

We fasten the sidewall to the floor frame and cab using steel brackets that make the sidewalls more stable on the chassis.

Our interlocking joint system connects the floor and walls to make a more durable, better-sealed body.

Steel tie-downs that secure appliances are just one of our many safety features.

We letter code our wiring every three inches to make service diagnosis easier and faster.

Block foam insulation increases R-value and decreases noise inside the coach.

Not only will you find three-point shoulder and lap seat belts with retractors in the cab, lap seat belts are standard in selected areas of the coach as well.

We conduct a final inspection of each unit to check all the dash functions, as well as the overall fit and finish.



Restyled driver's and front passenger's seats provide more comfort and support.

A computer evaluates every unit for wheel alignment and checks 75 chassis points to ensure proper handling.

New interior lighting enhancements include opticlear lenses on lights beneath upper cabinets plus courtesy lights along the floor.



Suncruiser's available digital satellite system offers more than 175 channels, CD-quality sound, and superior picture quality. The system is available with or without a receiver. (Program activation fees not included. Receiver NA in Canada.)

To prevent corrosion, we electrocoat all steel in the storage compartments.

A water test is conducted at the end of the assembly line to make sure each unit is watertight.

The one-piece fiberglass roof won't tear like rubber and comes with our standard 10-year limited parts and labor warranty, the only one in the industry.

We manufacture our own molded rear wheel wells which are non-corrosive and absorb sound better than metal.

Every unit comes with dampening directional vents ducted through the 3/4" thick roof to the available air conditioner(s).



We look for materials that combine light weight and strength, like the welded aluminum framework. It's strong enough to pass a drop test, but its light weight increases fuel efficiency and weight-carrying capacity.

Slideout support rails are 6" deep, instead of the usual 4" on many competitors' models, minimizing deflection and eliminating the need for auxiliary room props.

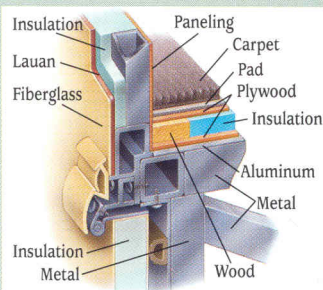
The sub-floor in this basement model is aluminum skin on foam. It's mounted on a steel and aluminum frame, then secured directly to the steel chassis to provide an optimal balance of sound absorption and structural integrity.

The HWH® room extension mechanism carries a special extended three-year warranty, exclusive to Winnebago Industries-manufactured room extensions.

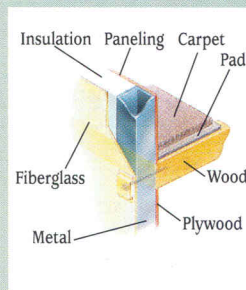
Framework is extruded from billets in our aluminum products area. To maintain quality control, we make over 80% of everything that goes into our motor homes.

As an added safety feature, upper cabinets are secured to metal plates in the sidewalls and roof.

ITASCA



COMPETITOR



Our innovative sidewall-to-floor joint is engineered to provide greater strength by transferring sidewall weight to the floor with a welded aluminum framework and steel perimeter frame. In addition, by embedding this framework into the block foam insulation, and adding flooring insulation, we create better temperature retention and sound deadening capabilities. Other designs simply fill in around framework and mount the sidewall flush to the floor with screws.

We developed Thermo-Panel® sidewall construction which combines light weight, structural integrity and durability.

Our smooth, one-piece fiberglass skin is strong, easy to clean and free of exposed fasteners.

To prevent leaks, windows are sealed with a non-hardening butyl sealant.

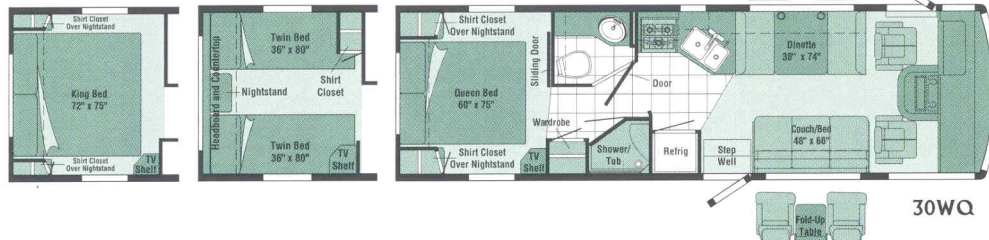
Exterior compartments come with new full-hinged valance panels, doors with gas strut supports (on most) and a single latch for easy opening. Doors are laminated, with smooth fiberglass skin on both sides of block foam insulation, for energy efficiency and sound absorption.

1997 SUNCRUISER WIDEBODY* FLOORPLANS

Choose from 41 floorplan combination possibilities

NEW 30WQ

Length	30'1"
Exterior Width	8'5.5"
Interior Height	6'8"
Interior Width	8'
Fuel Capacity - Ford/Chevrolet	75 gal./78 gal.
Fresh Water w/Heater	86 gal.
Holding Tank Capacity Black/Gray	55 gal./56 gal.
LP Capacity	60 lbs.
Wheelbase	178"
Ext. Ht. w/Roof Air - Ford*/Chevrolet*	11'8"/11'7"
Exterior Storage	124.5 cu. ft.
GVWR - Ford/Chevrolet	15,200 lbs./14,800 lbs.

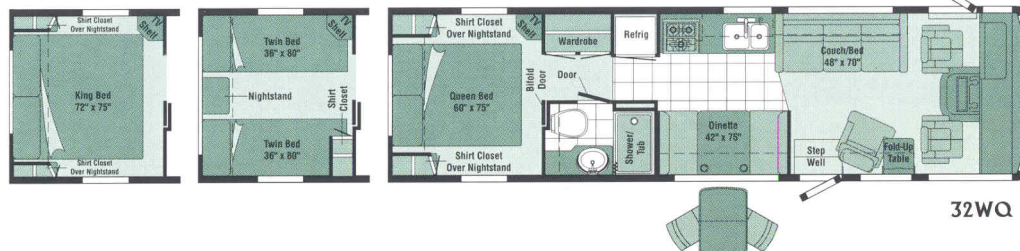


Standard Vinyl

Note: Dimensions shown are for sleeping space only and dashed lines denote overhead storage areas.

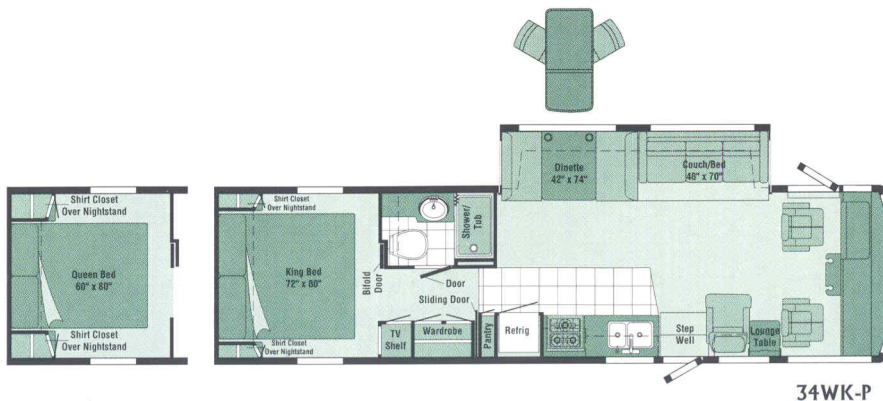
NEW 32WQ

Length	32'3"
Exterior Width	8'5.5"
Interior Height	6'8"
Interior Width	8'
Fuel Capacity - Ford/Chevrolet	75 gal./78 gal.
Fresh Water w/Heater	86 gal.
Holding Tank Capacity Black/Gray	49 gal./50 gal.
LP Capacity	80 lbs.
Wheelbase	208"
Ext. Ht. w/Roof Air - Ford*/Chevrolet*	11'9"/11'8"
Exterior Storage	132.2 cu. ft.
GVWR - Ford/Chevrolet	17,000 lbs./16,500 lbs.



NEW 34WK-PUSHER-SLIDEOUT

Length	34'3"
Exterior Width	8'5.5"
Interior Height	6'8"
Interior Width	8'
Fuel Capacity - Freightliner	90 gal.
Fresh Water w/Heater	92 gal.
Holding Tank Capacity Black/Gray	46 gal./50 gal.
LP Capacity	130 lbs.
Wheelbase	228"
Ext. Ht. w/Roof Air - Freightliner*	11'11"
Exterior Storage	135 cu. ft.
GVWR - Freightliner	20,700 lbs.



34WK

Length	34'3"
Exterior Width	8'5.5"
Interior Height	6'8"
Interior Width	8'
Fuel Capacity - Ford/Chevrolet	75 gal./78 gal.
Fresh Water w/Heater	86 gal.
Holding Tank Capacity Black/Gray	46 gal./50 gal.
LP Capacity	100 lbs.
Wheelbase	228"
Ext. Ht. w/Roof Air - Ford*/Chevrolet*	11'8"/11'7"
Exterior Storage	159.5 cu. ft.
GVWR - Ford/Chevrolet	17,000 lbs./16,500 lbs.

NEW 34WA

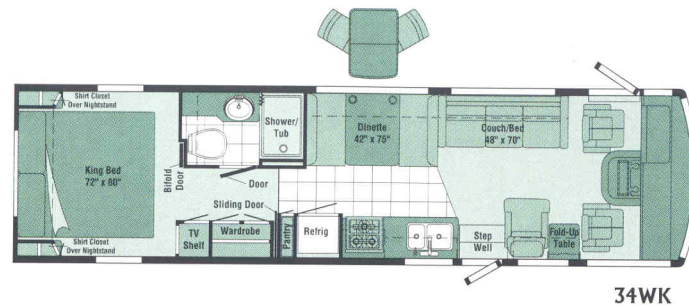
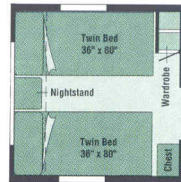
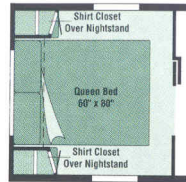
Length	34'3"
Exterior Width	8'5.5"
Interior Height	6'8"
Interior Width	8'
Fuel Capacity - Ford/Chevrolet	75 gal./78 gal.
Fresh Water w/Heater	86 gal.
Holding Tank Capacity Black/Gray	49 gal./50 gal.
LP Capacity	100 lbs.
Wheelbase	228"
Ext. Ht. w/Roof Air - Ford*/Chevrolet*	11'8"/11'8"
Exterior Storage	162 cu. ft.
GVWR - Ford/Chevrolet	17,000 lbs./16,500 lbs.

NEW 35WQ-SLIDEOUT

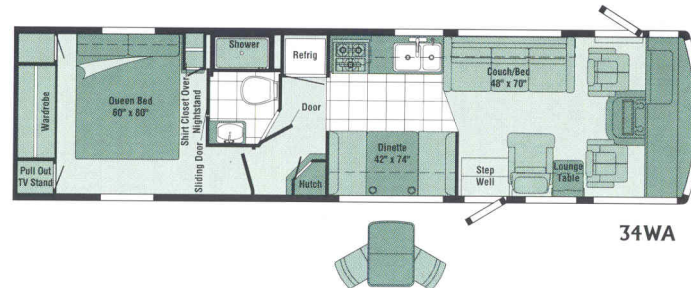
Length	35'11"
Exterior Width	8'5.5"
Interior Height	6'8"
Interior Width	8'
Fuel Capacity - Ford	75 gal.
Fresh Water w/Heater	72 gal.
Holding Tank Capacity Black/Gray	51 gal./57 gal.
LP Capacity	80 lbs.
Wheelbase	228"
Ext. Ht. w/Roof Air - Ford*	11'9"
Exterior Storage	130.7 cu. ft.
GVWR - Ford	17,000 lbs.

NEW 35WQ

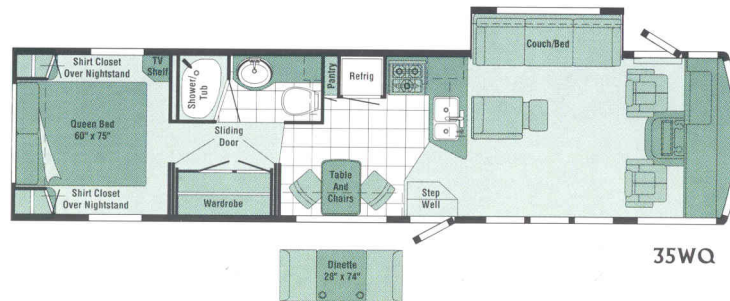
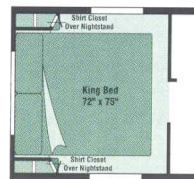
Length	35'10"
Exterior Width	8'5.5"
Interior Height	6'8"
Interior Width	8'
Fuel Capacity - Ford/Chevrolet	75 gal./78 gal.
Fresh Water w/Heater	72 gal.
Holding Tank Capacity Black/Gray	51 gal./57 gal.
LP Capacity	80 lbs.
Wheelbase	228"
Ext. Ht. w/Roof Air - Ford*/Chevrolet*	11'9"/11'8"
Exterior Storage	130.7 cu. ft.
GVWR - Ford/Chevrolet	17,000 lbs./16,500 lbs.



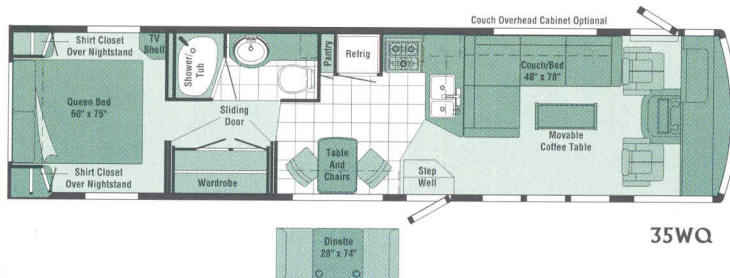
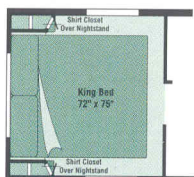
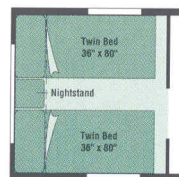
34WK



34WA



35WQ



35WQ

*The height of each model is based on the curb weight of a typically equipped unit on the standard chassis. The actual height of your vehicle may vary by as much as 2" depending on chassis or equipment variations.

♦These floorplans feature a widebody design - over 96" in width. In making your purchase decision, you should be aware that some states restrict access on some or all roads to 96" in body width. Before making your purchase decision, you should confirm the road usage laws in the states of interest to you.

1997 SUNCRUISER CONVENTIONAL FLOORPLANS

Choose from 8 floorplan combination possibilities

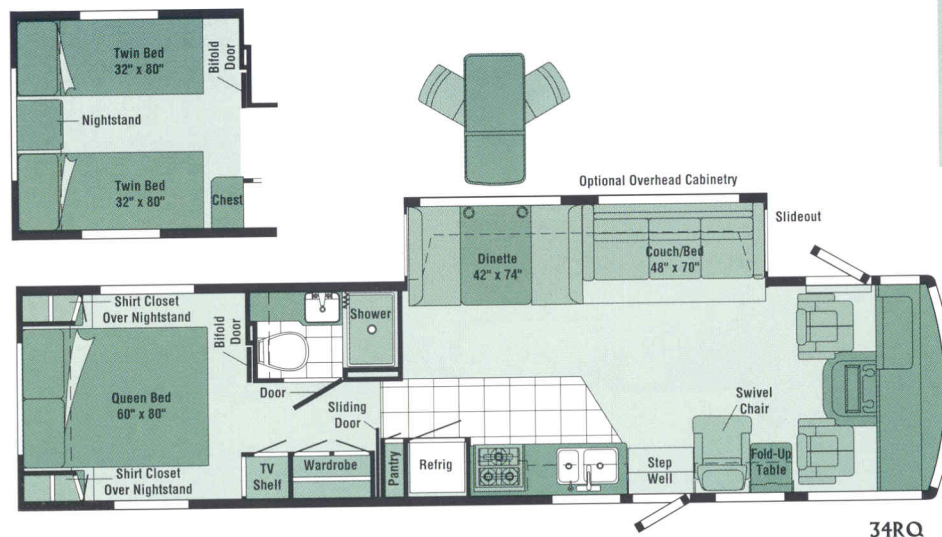


Standard Vinyl

Note: Dimensions shown are for sleeping space only and dashed lines denote overhead storage areas.

34RQ-SLIDEOUT

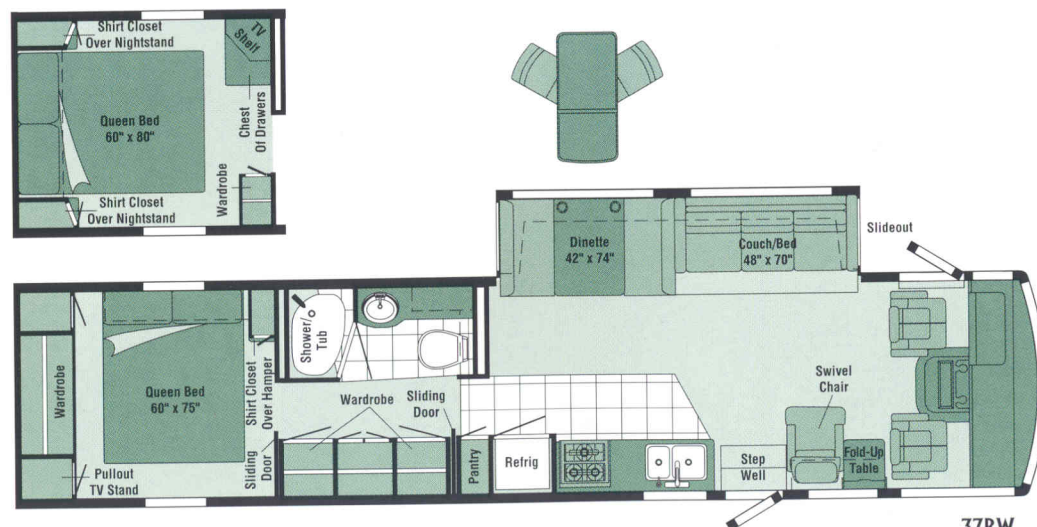
Length	34'2"
Exterior Width	8'
Interior Height	6'8"
Interior Width	7'7"
Fuel Capacity - Ford/Chevrolet	75 gal./78 gal.
Fresh Water w/Heater	70 gal.
Holding Tank Capacity Black/Gray	55 gal./50 gal.
LP Capacity	100 lbs.
Wheelbase	216"
Ext. Ht. w/Roof Air - Ford*/Chevrolet*	11'8"/11'7"
Exterior Storage	153.2 cu. ft.
GVWR - Ford/Chevrolet	17,000 lbs./16,500 lbs.



34RQ

37RW-SLIDEOUT

Length	37'6"
Exterior Width	8'
Interior Height	6'8"
Interior Width	7'7"
Fuel Capacity - Ford	75 gal.
Fresh Water w/Heater	70 gal.
Holding Tank Capacity Black/Gray	55 gal./50 gal.
LP Capacity	100 lbs.
Wheelbase	228" + Tag
Ext. Ht. w/Roof Air - Ford*	11'6"
Exterior Storage	133.5 cu. ft.
GVWR - Ford	20,000 lbs.



37RW

1997 SUNCRUISER INTERIORS AND SPECIFICATIONS

REGENCY[▲]



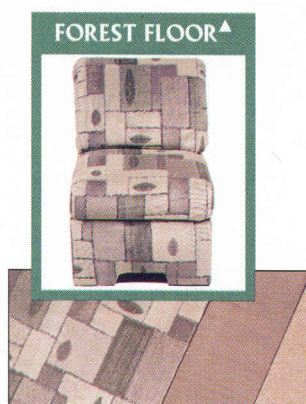
Main Accent Carpet

COZUMEL[▲]

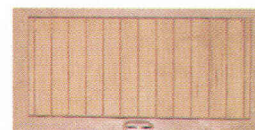


Main Accent Carpet

FOREST FLOOR[▲]



Main Accent Carpet



Solar Maple



Waterford Oak

Photos above show available color options and door styles. Styles and colors are not interchangeable.

AUTOMOTIVE

	30WQ	32WQ	34WK	34WA	35WQ	34WK-P	34RQ	37RW
Chassis - Chevrolet 7.4L V-8 Fuel-Injected Gasoline Engine, Auto. Transmission w/Overdrive & Cooler, 630-CCA Battery/105-Amp. Alternator	S	S	S	S	S		S	
Chassis - Chevrolet 6.5L Turbo Diesel Engine, Auto. Transmission w/Overdrive & Cooler, 630-CCA Battery/105-Amp. Alternator	O							
Chassis - Ford 7.5L V-8 Fuel-Injected Gasoline Engine, Auto. Transmission w/Overdrive & Cooler, 650-CCA Battery/130-Amp. Alternator	O	O	O	O	O		O	S
Chassis - Freightliner 5.9L 230-HP Turbo-Charged, After-Cooled Cummins Rear Diesel Engine, Auto. Transmission w/Cooler & 2 Speed Overdrive, Engine Block Heater, Full Air Brakes, Engine Exhaust Brake Ready, Fuel/Water Separator, Air Flow Indicator, 950-CCA Battery/100-Amp. Alternator						S		
Engine Exchange Chevrolet, 290-HP	O	O	O	O	O		O	
Front Shocks*/Steering Stabilizer Chevrolet only	O	O	O	O	O			
Shocks (Gas) Front, Chevrolet	O	O	O	O	O			
Suspension (Air) Tag Axle								S
Tires (Radial) w/Spare	S	S	S	S	S	S	S	S

DRIVER CONVENIENCES

	30WQ	32WQ	34WK	34WA	35WQ	34WK-P	34RQ	37RW
12-V Electrical Supply/Lighter	S	S	S	S	S	S	S	S
Battery Charge Control Dual, Automatic	S	S	S	S	S	S	S	S
Battery Charger (Solar) Wiring Prep	S	S	S	S	S	S	S	S
Battery Charger (Solar) 10-Watt	O	O	O	O	O	O	O	O
Battery Disconnect Auxiliary	S	S	S	S	S	S	S	S
Cabinet Center Console						S		
Carpeted Floor Mats, Wall-Mount Map Pocket(s)	S	S	S	S	S	S	S	S
Convenience Tray	S	S	S	S	S		S	S
Cruise Control	S	S	S	S	S	S	S	S
Curtain w/Track Front Wrap-Around	S	S	S	S	S	S	S	S
Defroster* Fans, Auxiliary 2-Speed	O	O	O	O	O	O	O	O

	30WQ	32WQ	34WK	34WA	35WQ	34WK-P	34RQ	37RW
3-Point Retracting Seat Belts (Drv./Frt. Pass.) Seats w/Reclining High-Back Design, Hinged Armrests, Lumbar Support, Swivel/Slide Pedestal w/Manual Remote Control, Lap Belts in Selected Areas	S	S	S	S	S	S	S	S
Driver's Door*	O	O	O	O	O	S	O	O
Driver's Seat* Six-Way Manual Adjust	O	O	O	O	O	O	O	O
Fog Lamps	O	O	O	O	O	O	O	O
Heating/Air Conditioning Automotive Blend Air System	S	S	S	S	S	S	S	S
Hood Release Exterior Key Locks	S	S	S	S	S	S	S	S
Map Light	S	S	S	S	S	S	S	S
Mirrors (Rear View) Exterior, Low Mounted, Includes Convex Element	S	S	S	S	S	S	S	S
Mirrors (Rear View) Exterior, Low Mounted, Electric w/Remote & Defrost	O	O	O	O	O	O	O	O
Rear View Monitor System Cable Ready	S	S	S	S	S	S	S	S
Rear View Monitor System Video/One-Way Audio	O	O	O	O	O	O	O	O
Service Light Driver's Side, Exterior	S	S	S	S	S	S	S	S
Start Circuit Auxiliary	S	S	S	S	S	S	S	S
Steering Power Assisted w/Tilt Wheel	S	S	S	S	S	S	S	S
Storage Cabinet (Front & Side Overheads)	S	S	S	S	S	S	S	S
Sunvisors	S	S	S	S	S	S	S	S
Window Shades (2) Roller, Light Filtering	S	S	S	S	S	S	S	S
Windows (Driver/Passenger) Sliding, w/Screens (Power Driver Window on 34WK-P)	S	S	S	S	S	S	S	S
Windshield Wipers (Intermittent)	S	S	S	S	S	S	S	S

ENTERTAINMENT

	30WQ	32WQ	34WK	34WA	35WQ	34WK-P	34RQ	37RW
Antenna (Radio) Roof-Mounted, Flexible Rubber	S	S	S	S	S	S	S	S
C.B. Prep Kit* Antenna, Coax Wiring, 12-V Power Connection	O	O	O	O	O	O	O	O
Entertainment Center (Patio)* DC Receptacle, 110-V Outlet, TV Jack, Radio Antenna, AM/FM/Cassette Radio, Speakers (2), Removable TV Table, Locking Door	O	O	O	O	O	O	O	O

1997 SUNCRUISER SPECIFICATIONS (CONT'D.)

	30WQ	32WQ	34WK	34WA	35WQ	34WK-P	34RQ	37RW
Inverter* 110-V for TV/VCR, 130-Watt	O	O	O	O	O	O	O	O
Satellite System Pre-Wiring Roof	S	S	S	S	S	S	S	S
Satellite System Digital-∞ NA on 35WQ w/Slideout	O	O	O	O	O	O	O	O
Satellite System w/Receiver Digital-∞ NA on 35WQ w/Slideout	O	O	O	O	O	O	O	O
Stereo Power Switch For Main or Auxiliary Battery Use	S	S	S	S	S	S	S	S
Stereo (Cab) AM/FM/Cassette Deck w/Speakers (4)	S	S	S	S	S	S	S	S
Stereo w/CD Player (Cab) AM/FM w/Speakers (4)	O	O	O	O	O	O	O	O
TV* (13" Color) w/Remote Located in Bedroom			O	O		O	O	O
TV, Front (19" Color) w/Remote	O	O	O	O	O	O	O	O
TV, Front (19" Color) & VCR w/Remotes Switching System, Cabinet Exchange	O	O	O	O	O	O	O	O
TV Enhancement Package Antenna (Amplified), DC Receptacles (2), Interior Jacks (2), Coax Wiring, Cable Input, Exterior Antenna Jack, TV Shelf or Stand	S	S	S	S	S	S	S	S

SLIDEOUT

	30WQ	32WQ	34WK	34WA	35WQ	34WK-P	34RQ	37RW
Slideout Room (Driver's Side)* Approximately 13' Long w/36" Extension, Switch Located on Instrument Panel, Mirror, Wainscoting w/Chair Rail, Cover						S	S	S
Overhead Cabinet (Queen Bed)						S	O	S
Slideout Room (Driver's Side)* Approximately 7'1" long w/20" Extension, Cover, Overhead Cabinet				O				

INTERIOR

	30WQ	32WQ	34WK	34WA	35WQ	34WK-P	34RQ	37RW
Cabinets Wood Doors	S	S	S	S	S	S	S	S
Carpeting w/Pad Stain Resistant	S	S	S	S	S	S	S	S
Ceiling Lights	S	S	S	S	S	S	S	S
Ceiling Vent* Non-Powered, Lounge, Galley, Bedroom	S	S	S	S	S	S	S	S
Ceiling Vent Powered Ventilator Fan, Galley (Lounge 30WQ)	O	O	O	O	O	O	O	O
Ceiling Vent Powered, Bathroom	S	S	S	S	S	S	S	S
Clock Decorator Style	S	S	S	S	S	S		S
Color Themes (Interior) Choice of Cozumel (Blue/Multi), Forest Floor (Taupe), Regency (Blue) w/Solar Maple Woodgrain	S	S	S	S	S	S	S	S
Waterford Oak Woodgrain Diff. Door Style	O	O	O	O	O	O	O	O
Courtesy Lights	S	S	S	S	S	S	S	S
Divider Bi-Fold Door		S	S			S	S	
Divider Hinged Door				S				
Divider Sliding Door (2 Doors on 35WQ & 37RW)	S		S		S	S	S	S
Lamp(s)* Decorator Style, Wall-Mounted in Lounge		S	S	S	S		S	
Picture Framed		S	S		S	S		
Wardrobe Mirrored Door(s), Carpeted Floor, Drawers (NA on 30WQ & 32WQ), Light, Clothes Rod	S	S	S	S	S	S	S	S
Washer/Dryer Combination*								O
Windows Tinted w/62% Light Transmittal	S	S	S	S	S	S	S	S
Windows* Dual Glazed, Thermo-Insulated	O	O	O	O	O	O	O	O

GALLEY

	30WQ	32WQ	34WK	34WA	35WQ	34WK-P	34RQ	37RW
Coffee Maker*	O	O	O	O	O	O	O	O
Decorative Light Dinette						S	S	S
Flooring (Vinyl)	S	S	S	S	S	S	S	S
Galley Rail	S	S	S	S	S	S		
Hutch			S					
Microwave Oven Touch Control	S	S	S	S	S	S	S	S
Pantry Slideout w/Adjustable Shelves, Locking			S		S	S	S	S
Range Hood Light, Powered Vent	S	S	S	S	S	S	S	S
Range w/Large Glass-Doored Oven 3-Burners, Range Cover	S	S	S	S	S	S	S	S
Refrigerator/Freezer Large, Double-Door	S	S	S	S	S	S	S	S
Refrigerator/Freezer Large, Double-Door w/Icemaker			O	O	O	O	O	O
Refrigerator/Freezer* Side-by-Side w/Icemaker			O		O	O	O	O
Sink (Double) Stainless Steel, Recessed w/Countertop Covers, Single Control Faucet	S	S	S	S	S	S	S	S
Spice Rack				S				
Storage below Dinette Seats	S	S	S	S	S	S	S	S
Table & Chairs (2)				S				
Table & Chairs (4)*	O	O	O	O		O	O	O
Water Purification System	S	S	S	S	S	S	S	S

BEDROOM

	30WQ	32WQ	34WK	34WA	35WQ	34WK-P	34RQ	37RW
Bedsprad(s), Pillows, Pillow Shams	S	S	S	S	S	S	S	S
Throw Pillow(s)	S	S	S	S	S	S	S	S
Hamper*							S	
Headboard(s)*	O				S		O	
Lamp(s) Decorator Style, Wall-Mounted	S	S	S	S	S	S	S	S
Mattress(es) Innerspring w/Non-Slip Mat, Access to Storage below, Gas Springs	S	S	S	S	S	S	S	S
Mirror					S		O	
Wainscoting w/Chair Rail	S	S	S	S	S	S	S	S

BATHROOM

	30WQ	32WQ	34WK	34WA	35WQ	34WK-P	34RQ	37RW
Flooring (Vinyl)	S	S	S	S	S	S	S	S
Hamper	S	S	S			S		
Hand Rail/Towel Bar (in Shower)	S							
Lavatory Cabinet	S	S	S	S	S	S	S	S
Linen Cabinet	S	S	S		S	S	S	S
Magazine Rack					S			S
Makeup Lights (3) 2 Sets on 37RW				S	S		S	S
Makeup Lights (4)	S	S	S			S		
Medicine Cabinet Mirrored Door				S				
Medicine Cabinet Wooden Doors	S	S	S		S	S	S	S
Mirror Wall-Mounted	S	S	S		S	S	S	S
Shower Flexible Shower Head				S			S	
Shower/Tub Flexible Shower Head (Fixed on 35WQ & 37RW)	S	S	S		S	S		S
Shower Door (Glass)	S				S			S
Shower Door (Pleated)		S	S	S		S	S	
Sink Oval, w/Ledge Back	S	S	S		S	S		S

	30WQ	32WQ	34WK	34WA	35WQ	34WK-P	34RQ	37RW
Sink Rectangular, Molded Soap Dishes				S			S	
Skylight & Shower Light	S	S	S	S	S	S	S	S
Tissue Holder	S	S	S	S	S	S	S	S
Toilet w/Sprayer & Foot Pedal Porcelain	S	S	S	S	S	S	S	S
Towel Bar(s)	S				S			S
Towel Rack 3 Rods, Built into Bath Door	S	S	S	S		S	S	
Towel Ring	S	S	S	S		S	S	

EXTERIOR

	30WQ	32WQ	34WK	34WA	35WQ	34WK-P	34RQ	37RW
Awning Rail	S	S	S	S	S	S	S	S
Awning* Patio	O	O	O	O	O	O	O	O
Bumpers Rustproof, Front: Steel Reinforced, Rear: Formed Aluminum w/End Caps	S	S	S	S	S	S	S	S
Entrance Door w/Screen Door Latch & Deadbolt Locks, Electric Steps w/Door Jamb Switch	S	S	S	S	S	S	S	S
Holding Tanks (Heated Compartment)	S	S	S	S	S	S	S	S
Ladder	S	S	S	S	S	S	S	S
Mud Flaps Rear	S	S	S	S	S	S	S	S
Outlet 110-V, Curbside	S	S	S	S	S	S	S	S
Porch Light w/Interior Switch	S	S	S	S	S	S	S	S
Sewer Hose & Storage Compartment	S	S	S	S	S	S	S	S
Storage Compartments Heated Rear Storage Compartment (NA 34WA), Locks, Gas Struts, Single Paddle Latch, Lights	S	S	S	S	S	S	S	S
Tire Tools Wrench, Leverage Bar, Tire Hoist Rod	S	S	S	S	S	S	S	S
Trailer Towing Package w/Class II Hitch	S	S	S	S	S	S	S	S
Trailer Wiring Extension	S	S	S	S	S	S	S	S
Trunk* Access to Underbed Storage (NA w/Twin Bed Option)	S	S	S		S			
Undercoating*	O	O	O	O	O			
Wash Station Water Pump Switch	S	S	S	S	S	S	S	S
Water Fill Door Lockable	S	S	S	S	S	S	S	S
Water Tank Drain	S	S	S	S	S	S	S	S
Wheel Covers	S	S	S	S	S		S	S
Wheel Liners Stainless Steel	O	O	O	O	O	S	O	O

SYSTEMS

	30WQ	32WQ	34WK	34WA	35WQ	34WK-P	34RQ	37RW
30-Amp. Power Cord	S	S	S	S	S	S	S	S
50-Amp. Power Cord*		O	O	O	O	O	O	O
Air Conditioning Pre-Wiring Roof	S	S	S	S	S	S	S	S
Air-Conditioner Roof, 15,000-BTU	O							
Air-Conditioners Roof, Front/Rear: 13,500/13,500-BTU		O	O	O	O	O	O	O
Batteries (2) Deep Cycle RV	S	S	S	S	S	S	S	S
City Water Hook-Up	S	S	S	S	S	S	S	S
Electrical Control Center 110-V AC/12-V DC, 9-Amp. Battery Charger, 45-Amp. Converter, DC Automotive Fuses, AC Circuit Breakers	S							
Electrical Distribution System Breaker Panels, 40-Amp. Converter/Charger		S	S	S	S	S	S	S

	30WQ	32WQ	34WK	34WA	35WQ	34WK-P	34RQ	37RW
Furnace Ducted, Low Profile, 35,000-BTU	S	S						
Furnace Ducted, Low Profile, 40,000-BTU			S	S	S	S	S	S
Generator Prep Kit Fuel Line (NA 34WK-P), 12-V Wiring	S	S	S	S	S	S	S	S
Generator* 3,600-Watt, LP w/Diesel	O							
Generator* 4,000-Watt, Gas	O							
Generator* 5,000 or 6,500-Watt, Gas		O	O	O	O		O	O
Generator* 6,500-Watt LP or 7,500-Watt Diesel						O		
Hydraulic Leveling Jacks Front & Rear	O	O	O	O	O	S	S	S
LP Tank Permanent Mount w/Gauge	S	S	S	S	S	S	S	S
Monitor Panel Water, Holding & LP Tank Levels, Battery Condition Gauge, Water Heater Ignition Switch w/Pilot Indicator Light, Water Pump Switch, Located in Galley	S	S	S	S	S	S	S	S
Shoreline/Generator Automatic Changeover Switch	S	S	S	S	S	S	S	S
Water Heater 6-gal., Electronic Ignition						S		
Water Heater (Motoraid) & Rear Automotive Heater	S	S	S	S	S		S	S
Water Heater Winterization By-Pass Valve	S	S	S	S	S	S	S	S
Water Pump (Demand) Accumulator Tank	S	S	S	S	S	S	S	S
Water System Winterizing Valve	S	S	S	S	S	S	S	S

SAFETY

	30WQ	32WQ	34WK	34WA	35WQ	34WK-P	34RQ	37RW
3-Point Retracting Seat Belts (Drv./Frt. Pass.)	S	S	S	S	S	S	S	S
Assist Handle* Interior & Exterior (Interior Handle NA 35WQ)	S	S	S	S	S	S	S	S
Assist Strap Interior	S	S	S	S	S	S	S	S
Carbon Monoxide Detector/Alarm	S	S	S	S	S	S	S	S
Fire Extinguisher (10-B.C.)	S	S	S	S	S	S	S	S
Ground Fault Interrupter	S	S	S	S	S	S	S	S
High Mount Brake Light	S	S	S	S	S	S	S	S
Lap Belts in Selected Areas	S	S	S	S	S	S	S	S
LP Leak Detector/Alarm	S	S	S	S	S	S	S	S
Smoke Detector/Alarm	S	S	S	S	S	S	S	S
Windshield Laminated Safety Glass Mounted in Steel	S	S	S	S	S	S	S	S
Window Escape	S	S	S	S	S	S	S	S

▲ The style of chair shown is not available on the motor home you purchase. It is shown to represent fabric color and pattern only.

S Standard O Optional

* Not all options available in combination. See dealer for details.

∞ TV satellite system options do not include programming activation. Quality reception is only available in the lower 48 States. Receiver not available in Canada.

Winnebago Industries' continuing program of product improvement makes specifications, equipment, model availability and prices subject to change without notice.

DRIVING CUSTOMER SATISFACTION HOME.

Before you buy your next motor home, drop by your local Winnebago Industries dealership to ask the service manager a few questions. Like, who builds the best motor homes? Who backs them best? Who has the best parts system? And who provides the best training to dealers? Chances are, most often you'll hear the same name — Winnebago Industries. To understand why service managers rate our motor homes so highly, you need look no further than our warranty package and Preferred Care Program.

All Itasca motor homes are protected by the most comprehensive warranty package in the industry. Here are some of the highlights:

- Transferable 12-month/15,000 mile basic coverage including all appliances and equipment we install
- 36-month/36,000 mile limited warranty on sidewalls and backwall lamination
- 10-year limited parts and labor warranty coverage on the roof

Each Itasca also includes a one year membership in our industry-leading Preferred Care Program. This newly expanded 24-hour nationwide assistance plan includes:

- Emergency dispatching for road service and towing
- Free battery jump-start, tire change, fuel delivery, and lockout assistance
- Equipment service questions, provider recommendations, appointment scheduling and directions to the service location

Preferred Care assistance is provided through an exclusive 24-hour toll-free telephone number, staffed by experienced RV service professionals and supported by a network of more than 20,000 prequalified service providers. After the first year of ownership has passed, the Preferred Care Program can be extended through membership in the Winnebago-Itasca Travelers Club.



For Sales and Service Information Contact:

ITASCA

Built Proudly by



©1996 Winnebago Industries, Inc.

Printed in USA

Two great ways to enjoy your new Itasca are in the Winnebago-Itasca Travelers (WIT) Club and as a member of the Winnebago Motorsports Team.

WIT members enjoy the RV lifestyle



by participating in organized caravans and rallies — like the WIT Grand

National Rally held every summer in Forest City. Other benefits and services include a monthly magazine, trip routing, mail forwarding and available Preferred Care.

As a Winnebago Motorsports Team member, you can stay with the pack week after week. All across the country, members follow the action at the track from the comfort of their motor home. Members receive a quarterly newsletter and the opportunity to purchase Premium Road Service and to participate in race-day events at selected tracks. For more information about either club, see your dealer or call 1-800-643-4892.



With a commercial vehicle from Winnebago

Industries, your business is never in the wrong location. We custom build everything from mobile hair salons and news stations to mobile medical clinics and ATMs. A variety of sizes and models is available. Contact your dealer for more information.

To learn more about Itasca motor homes, visit the Winnebago Industries factory in Forest City, Iowa. Call us at (515) 582-3535 for a free factory tour.

Seat belts are your most important hookup. Always buckle up.

