



1998

BRAVE®
BRAVE DL
BRAVE SE



1998 BRAVE SERIES

With three spacious widebody Brave series to choose from, there's room for just about any lifestyle.

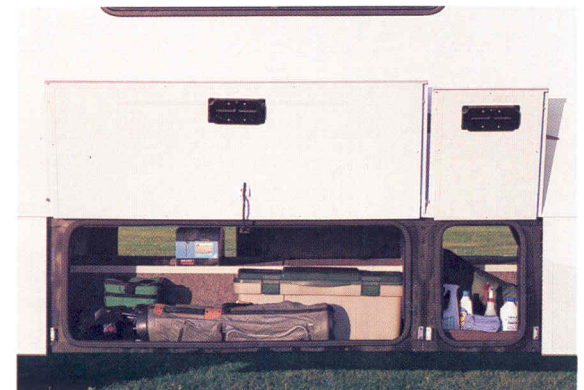
When people refer to the 1998 Brave series as tremendous, we're not sure if they're talking about the units themselves or their generous living and storage areas. Or both. This year, choose from three inviting lines within the series. Our entry level Brave SE offers luxuries like basement storage and generous compartments. The Brave DL offers basement storage and impressive upgrade features like raised panel wood doors, standard driver's door, a water purification system and an available Mobile Theater Sound System. And the Brave boasts a full basement design with pass through storage and a slideout room on the 35WP. The Brave series is built to last with benefits like a one piece fiberglass roof with ducted air conditioning, Thermo-Panel® sidewall construction and belt-line exterior compartment doors featuring single handle paddle latches. One of our numerous value-packed Brave series is sure to jump start your travel bug.



34WA This widebody basement model offers a popular side aisle floorplan that clearly separates the bedroom from the rest of the coach. An available coffeemaker is conveniently located above the dinette.



34WA This in-line galley puts all your kitchen supplies at arm's length and features a deep stainless steel sink with dual covers to maximize counter space.



32WQ This all new basement design offers versatile storage compartments for holding plenty of gear. Fully-hinged and insulated beltline compartment doors, with single-paddle latches make packing a breeze.

BRAVE DL



33DQ Watch your living area grow with this lounge slideout. Even the galley area feels larger when the room is extended. The bathroom on this unit includes make-up lights, a linen cabinet and space saving features like a recessed towel rack.



31DQ Snooze in style with the upgraded bedroom decor on this unit. The window treatments and throw pillows are just a few of the extras that will make you feel at home in the queen bed.

BRAVE SE



26WU This unit features an available overhead entertainment center with an available VCR, and swiveling captain's chairs that come in handy when you're relaxing with friends. The comfortable dinette seats four, and converts into additional sleeping space.



31WQ This in-line galley puts everything within easy reach. A durable sink cover can double as a cutting board to add valuable counter space, and a three burner range with a high output burner makes cooking a snap.



26WU This bathroom features a linen cabinet, pleated fabric shower door and a space saving towel bar over the toilet. There's also a frosted white skylight to let in as much natural light as the weather permits.

1998 BRAVE SERIES SPECIFICATIONS

1998 BRAVE SERIES	BRAVE SE			BRAVE DL		BRAVE			
	26WU	29WQ	31WQ	31DQ	33DQ	30WQ	32WQ	34WA	35WP
Length	26'5"	30'	31'11"	31'11"	33'3"	30'11"	32'6"	35'	35'3"
Exterior Width	8'5.5"	8'5.5"	8'5.5"	8'5.5"	8'5.5"	8'5.5"	8'5.5"	8'5.5"	8'5.5"
Interior Height	6'8"	6'8"	6'8"	6'8"	6'8"	6'8"	6'8"	6'8"	6'8"
Interior Width△	8'5"	8'5"	8'5"	8'5"	8'5"	8'5"	8'5"	8'5"	8'5"
Fuel Capacity (gal.) - Ford/Chev	NA/40	75/75	75/75	75/75	75/75	75/75	75/75	75/75	75/75
Fresh Water Capacity w/Heater (gal.)	56	71	71	71	71	85	85	85	69
Holding Tank Capacity (gal.) - Black/Gray	35/40	35/40	35/40	35/40	35/40	55/56	49/50	57/50	40/50
LP Capacity (gal.) ⁰	23	23	23	28	28	23	23	23	28
Wheelbase - Ford/Chev	NA/158.5"	178"/178"	190"/190"	190"/190"	216"/216"	190"/190"	208"/208"	228"/228"	216"/216"
Ext. Ht. w/AC - Ford/Chev*	NA/11'5"	11'4"/11'3"	11'3"/11'2"	11'3"/11'2"	11'5"/11'4"	11'10"/11'9"	11'10"/11'9"	11'10"/11'9"	11'9"/11'8"
Exterior Storage (cu. ft.)	45.9	112.4	113.4	111.7	110.9	124.5	137	162	137.4
GVWR (lbs.) - Ford/Ford Optional	NA/NA	15,200/NA	15,200/17,000	17,000/NA	17,000/NA	15,200/17,000	17,000/NA	17,000/NA	17,000/NA
GVWR (lbs.) - Chev/Chev Optional	12,300/14,800	16,500/NA	16,500/NA	16,500/NA	16,500/NA	16,500/NA	16,500/NA	16,500/NA	16,500/NA

S Standard
O Optional

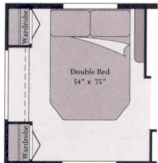
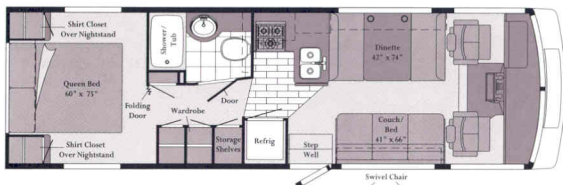
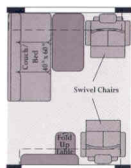
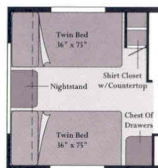
AUTOMOTIVE									
Chassis - Chevrolet 7.4L Vortec V8 @ 290-hp, 124-amp. alternator, anti-lock brake system	S	O	O	S	S	O	S	S	S
Chassis - Ford 7.5L V8 @ 245-hp, 130-amp. alternator		S	S	O	O	S	O	O	O
Shocks/stabilizer pkg.* - front, Chevrolet	O	O	O	O	O	O	O	O	O
Tires (radial) - w/spare	S	S	S	S	S	S	S	S	S
DRIVER CONVENIENCES									
Battery charge control w/battery disconnect - dual, auto.	S	S	S	S	S	S	S	S	S
Cab seats w/3-point retracting seat belts - reclining high-back design, hinged armrests, lumbar support, swivel/slide pedestal	S	S	S	S	S	S	S	S	S
Cigarette lighter/12-V electrical supply	S	S	S	S	S	S	S	S	S
Cruise control	S	S	S	S	S	S	S	S	S
Curtain w/track - front wrap-around	S	S	S	S	S	S	S	S	S
Convenience tray	S	S	S	S	S	S	S	S	S
Driver's door				S	S				
Heating/air conditioning - automotive blend air system	S	S	S	S	S	S	S	S	S
Hood release - exterior key locks	S	S	S	S	S	S	S	S	S
Lap belts - in designated areas	S	S	S	S	S	S	S	S	S
Map light, map pockets & floor mats	S	S	S	S	S	S	S	S	S
Mirrors (rear view) - low mounted	S	S	S	S	S	S	S	S	S
Mirrors (exterior) - low mounted, electric remote w/defrost, include convex element	O	O	O	O	O	O	O	O	O
Rear view monitor system - video/one-way audio	O	O	O	O	O	O	O	O	O
Start circuit - auxiliary	S	S	S	S	S	S	S	S	S
Steering - power assisted w/tilt wheel	S	S	S	S	S	S	S	S	S
Storage cabinet - (front overhead)	S	S	S	S	S	S	S	S	S
Sunvisors - w/map strap	S	S	S	S	S	S	S	S	S
Windows - sliding, w/screens	S	S	S	S	S	S	S	S	S
Windshield wipers - (intermittent)	S	S	S	S	S	S	S	S	S
Work station - pull-out, pass. side, dash				O	O				

S Standard
O Optional

ENTERTAINMENT									
C.B. prep kit* - antenna, 12-V power connection						O	O		
Entertainment center (patio)* - DC receptacle, AC duplex receptacle, 110-V outlet, TV jack, radio antenna, with AM/FM cassette or CD, speakers (2), removable TV table, locking door	O	O	O	O	O	O	O	O	O
Inverter* - 130-watt for TV/VCR	O	O	O	O	O	O	O	O	O
Satellite system pre-wiring	S	S	S	S	S	S	S	S	S
Stereo power switch - for main or auxiliary battery use	S	S	S	S	S	S	S	S	S
Stereo w/cassette deck (cab) - electronic tune, AM/FM w/speakers (4), roof-mounted flexible rubber antenna	S	S	S	S	S	S	S	S	S
Stereo w/CD player (cab) - electronic tune AM/FM w/speakers (4), roof-mounted flexible rubber antenna	O	O	O	O	O	O	O	O	O
TV* (13" color) w/remote - located in bedroom						O	O		
TV* front (19" color) w/remote - switching system	O	O	O	O	O	O	O	O	O
TV* front (19" color) w/remote & VCR - switching system	O	O	O	O	O	O	O	O	O
TV enhancement package* - antenna (amplified); DC receptacles (2); interior jacks (2); coax wiring; cable input; TV shelf, stand or cabinet	S	S	S	S	S	S	S	S	S
Mobile theater sound system - amplifier, 6 speakers						O	O		
SLIDEOUT									
Slideout room (driver's side couch)* - overhead cabinet, exterior room cover (includes hydraulic leveling jacks - 35WP)						O			O
INTERIOR									
Bed (front overhead)*	O	O	O						
Carpeting w/pad - stain resistant	S	S	S	S	S	S	S	S	S
Ceiling - fabric	S	S	S	S	S	S	S	S	S
Ceiling lights	S	S	S	S	S	S	S	S	S
Ceiling vent* - non-powered, lounge, galley, bedroom	S	S	S	S	S	S	S	S	S
Ceiling vent - powered, bathroom	S	S	S	S	S	S	S	S	S
Courtesy lights (2)	S	S	S	S	S	S	S	S	S
Color themes (interior) - Monaco (blue), Dune (brown), Bayberry (green)	S	S	S						
Color themes (interior) - choice of Village Green (green), Barcelona (taupe)						S	S		

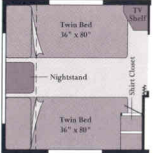
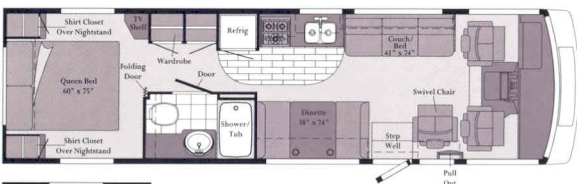
ALL NEW WIDEBODY FLOORPLANS OFFER PLENTY OF BASEMENT STORAGE.

Brave



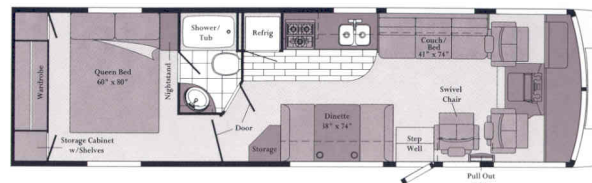
30WQ

- Widebody basement design.
- Available forward-facing couch.
- Spacious storage across from bathroom.
- Numerous floorplan options.



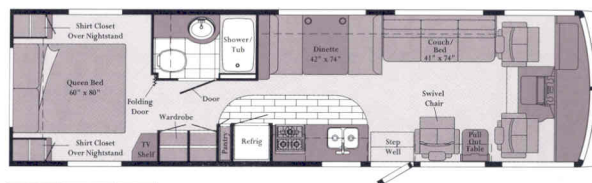
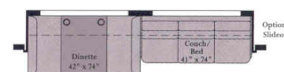
32WQ

- Widebody basement design.
- Queen or twin bed option.
- Large wardrobe across from bathroom.



34WA

- Widebody basement design.
- Large rear wardrobe.
- Space-saving pull out table.



35WP

- Widebody basement design.
- Available dinette/lounge slideout.
- Queen or twin bed option.
- Available January 1998.



32WQ

EXTERIOR VALANCE PANELS



Light Silver
Brave DL, Brave



Cool Blue
Brave DL

Exterior lower valance colors for the Brave DL are Light Silver, suggested with Village Green; and Cool Blue, suggested with Barcelona. However, you may order either valance color regardless of your Brave DL interior choice. For the Brave, Light Silver is the lower valance color offered.



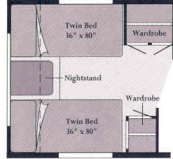
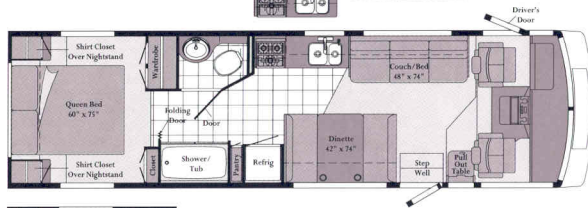
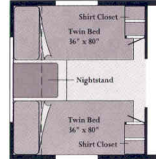
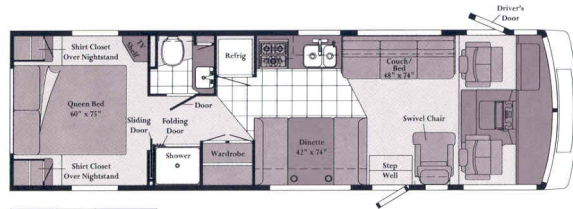
Standard Vinyl Flooring



Standard Vinyl Plank Flooring

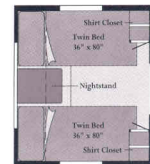
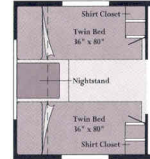
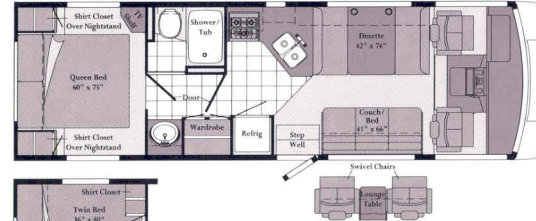
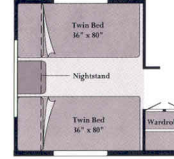
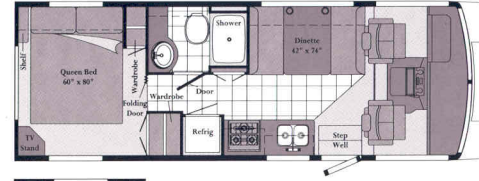
Widebody designs are over 96" wide. Some states restrict access on some or all state roads to 96". You should confirm the road usage laws in the states of interest to you. Note: Dimensions shown are for sleeping space only and dashed lines denote overhead storage areas.

Brave DL



33DQ Slideout

Brave SE



26WU



Our high standards made us one of the first motor home manufacturers to earn the title "Qualified Vehicle Modifier," identifying us as a leader among companies who build on Ford chassis.

INTERIORS

Brave SE
with Waterford Oak

Dune



Monaco



Bayberry



Brave DL
with Waterford Oak

Barcelona



Village Green



Every motor home interior is stitched, constructed, sanded and stained with care in our factory by our own employees. We even perform extensive wear tests to ensure long-lasting durability. This concept is called Home Comfort Design, and it gives us complete control over the fit and finish of the final product. We take great pride in offering you high-quality, handcrafted living spaces to match your lifestyle.

Brave
with Waterford Oak

Sandpiper



Horizon



Gemstone

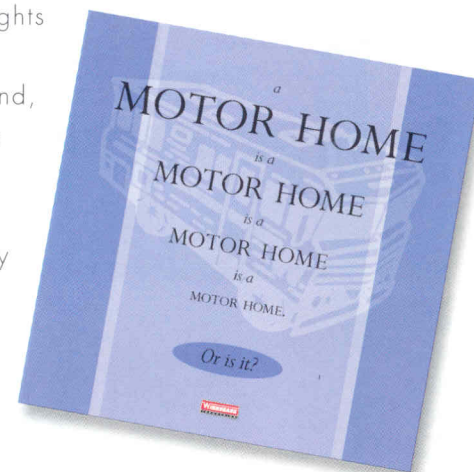


Barcelona



Ask for the new Winnebago Industries buyer's guide and discover why all motor homes are not created equal.

The process of buying a motor home can be intimidating, even if you're a veteran. And in a market saturated with flashy first impressions, the true signs of quality are often hard to spot. So this year we put together a user-friendly guide to help you make some educated observations as you compare Winnebago Industries motor homes to the competition. It explains our uniquely superior on-site manufacturing processes, highlights the importance of meeting (and exceeding) industry standards and, best of all, it's free. Use it as a reference tool when shopping around, or familiarize yourself with some key safety and quality considerations. Ask for the guide next time you visit your Winnebago Industries dealer, and upgrade your motor home buying savvy.



Visit us at www.winnebagoind.com

WINNEBAGO Built proudly by
WINNEBAGO INDUSTRIES

© 1997 Winnebago Industries, Inc. Forest City, IA 50436. Printed in USA.

Seat belts are your most important hookup. Always buckle up.