

AVALANCHE

AVALANCHE

By Keystone



**Keystone RV
Company**

www.Keystone-Avalanche.com

- 1 Hardwood Cherry Refrigerator Front
- 2 Floor-to-Ceiling Pantry*
- 3 Real Corian Countertops
- 4 High Arch Gooseneck Faucet, Single Lever Faucet Handle, Pull-Out Spray Head, Filtered Water Outlet
- 5 Huge Undermounted Stainless Steel Sink
- 6 Hidden Swing-Out Trash Can Storage
- 7 22" Oven



AVALANCHE 330RE KITCHEN



AN AVALANCHE OF LUXURY



- 1 Name Brand 1060P LCD HDTV
- 2 Glazed Grand Cherry Hardwood Doors, Drawers and Stiles
- 3 Optional Fireplace that Emits 5,000 BTU of Heat

- 4 6' 5" Slide-Out Height
- 5 Residential Hardwood Entertainment Center Top
- 6 Ceiling Fan

- 7 Real Wood Valances - (no curtain to adjust) and Day/Night Shades
- 8 Hardwood "Smart Storage" Dinette

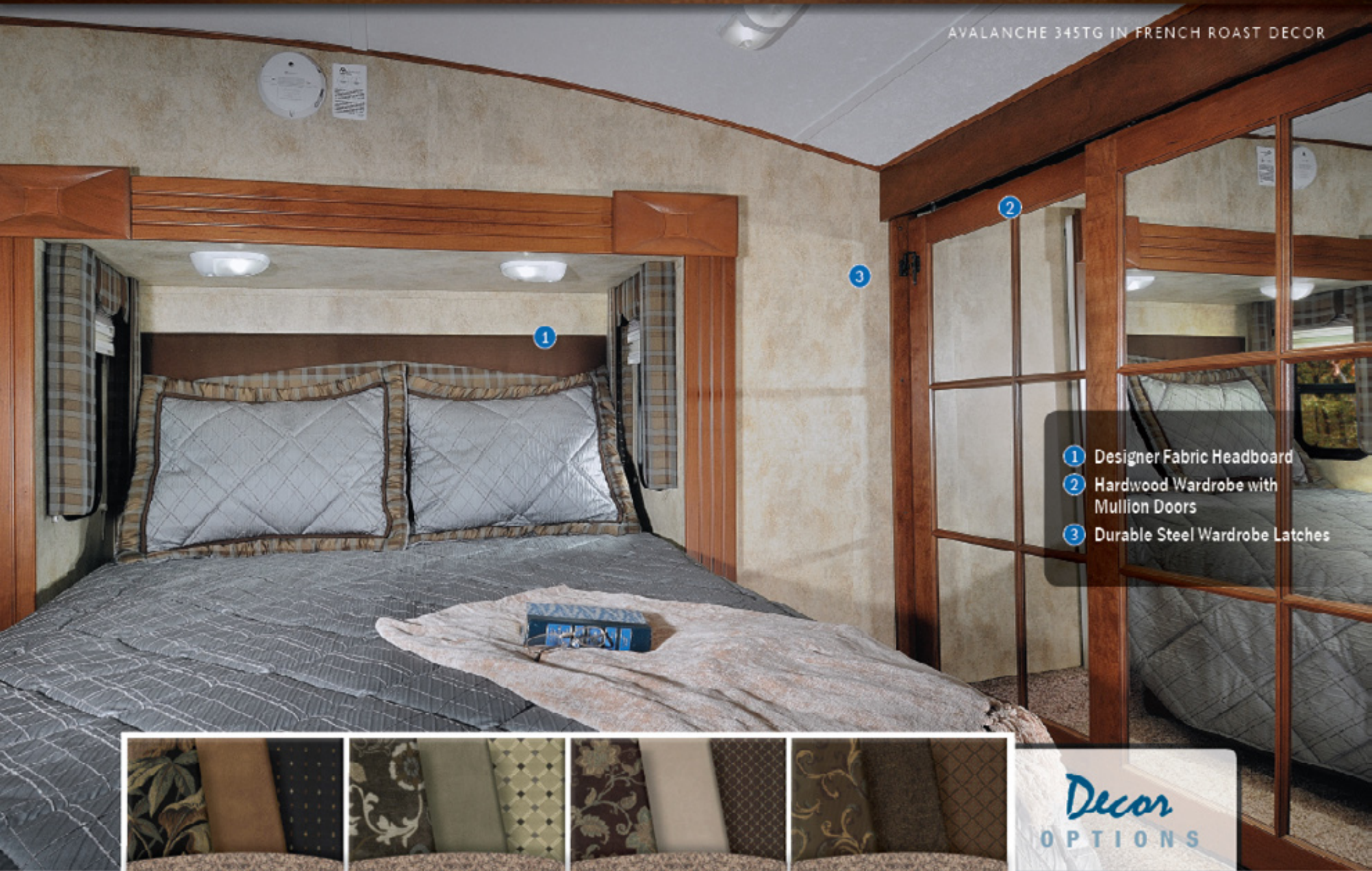


- 1 Raised 6-Panel Wood Residential Doors with Lever Handles
- 2 Maximized Storage Space Throughout Unit

- 3 Hardwood Fascia
- 4 All Windows in all Floorplans Open for Great Ventilation

AN AVALANCHE OF COMFORT

AVALANCHE 345TG IN FRENCH ROAST DECOR



- ① Designer Fabric Headboard
- ② Hardwood Wardrobe with Mullion Doors
- ③ Durable Steel Wardrobe Latches



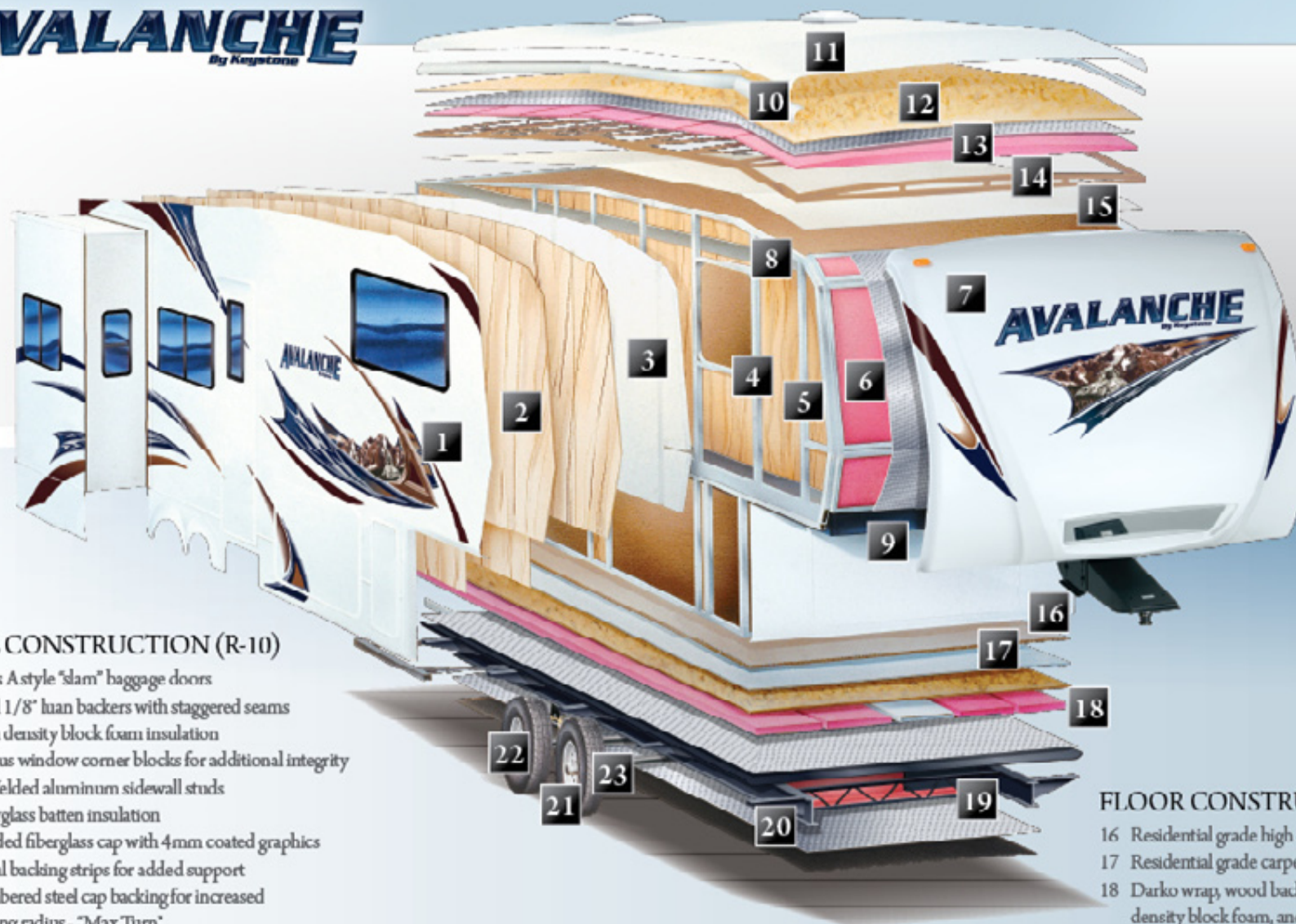
EBONY VINE

SILVER LEAF

FRENCH ROAST

BOTANICAL

Decor
OPTIONS



WALL CONSTRUCTION (R-10)

1. Class A style "slam" baggage doors
2. Dual 1/8" luan backers with staggered seams
3. High density block foam insulation
4. Radius window corner blocks for additional integrity
5. 2" Welded aluminum sidewall studs
6. Fiberglass batten insulation
7. Molded fiberglass cap with 4mm coated graphics
8. Metal backing strips for added support
9. Cambered steel cap backing for increased turning radius - "Max Turn"

ROOF CONSTRUCTION (R-28)*

10. Aluminum radius roof corner molding wrap
11. One-piece EPDM roof with 12-year warranty
12. 3/8" Fully walkable roof decking
13. Thermo-Foil insulation
14. Fiberglass batten insulation
15. 1/8" Ceiling Luan with vinyl protection

ZERO DEGREE RATED

With an impressive list of industry-leading construction advancements, Avalanche sets the bar for four season living.

FLOOR CONSTRUCTION (R-32)*

16. Residential grade high density carpet with stain protection
17. Residential grade carpet padding
18. Darko wrap, wood backing, aluminum structure, high density block foam, and Astro-Foil insulation, thermo-insulation
19. Thermo-Shield holding tank insulation featuring: One piece fluted polypropylene fully enclosed subfloor, fiberglass batten insulation, and ducted heat

TIRES AND CHASSIS

20. 10" steel "powder coated" steel I-beams
21. 16" E-Load radial tires
22. EZ-Lube 8 lug, 6,000lb axles
23. Equa-Flex suspension with steel shackles and greasable brass bushings



ZERO DEGREE RATED COMPONENTS

- Seamless, one piece underbelly
- Enclosed and heated holding tanks
- Enclosed and heated dump valves
- "Therma-Shield 37" Tank Enclosure
- Tripled vented sub-floor heat ducts
- Astro-Foil underbelly insulation
- R-32 floor insulation
- High density, laminated sidewalls — R-10
- R-28 roof insulation
- "No Sweat" vented attic system
- Heated "waterworks" utility center
- Heated pass-thru storage
- Heated and insulated water lines
- Enclosed low point drain shut-offs
- Fiberglass gooseneck shield

-4° OUTSIDE



With an impressive list of industry-leading construction advancements, Avalanche sets the bar for four season living. But don't just take our word for it — look at these official test results from a world leader in heating and cooling technology — Dometic Corporation. Subjected to below zero temperatures inside their legendary test chamber, the following temperatures were recorded inside an Avalanche with the thermostat set at 74°;

Living room — 72° ————— Bedroom — 70°
Bathroom — 75° ————— Pass-Thru/Utility Center — 58°*

Of course, inside temperatures are only part of the story. With our industry leading "Therma-Shield 37" package, all the holding tanks and dump valves remained completely operational on our test unit with recorded temperatures consistently above 50° in these critical areas. Not everyone needs this kind of protection, but when four season comfort becomes important, make sure you demand the very best — demand an Avalanche!

*Testing was done in a controlled independent environment.



1 The Avalanche's Max Turn front cap features an aerodynamic design to give you the **best in class turning radius** and fuel economy. Hitching up becomes a breeze with the Avalanche's 36" Hitch assist mirror and dual LCD docking lights.

2 One look at the Avalanche's basement storage tells the story-- The Avalanche boasts abundant **pass through storage at over 145 cu ft!** And you won't have to worry about your possessions sliding around, as we've used non-skid rubber diamond plate flooring that isn't slippery like felt carpet lining.

3 Set-up and pack-up is quick and easy in an Avalanche. One reason is the power front and rear stabilizer jacks, with easily accessible controls. You'll also notice that the Avalanche jacks are placed outside of the main frame rails, for a wider, more sturdy base.

4 The price point's largest and most durable frame features **10" powder coated steel frame rails** on all floorplans, as well as **6,000lb axles** equalized with the upgraded **Equa-Flex suspension** virtually eliminates damage from vibration caused by road bumps, holes, and cracks to give you a safe and comfortable towing experience. This system tested out significantly better than competing brands by Roush Racing, a third party testing company.

EXTERIOR FEATURES



5 The Avalanche **exterior kitchen**, featured in the 340TG and 345TG, is excellent at the game or at the campground. With a flip down LP grill, a refrigerator, a large amount of storage space and even an LCD TV, you're sure to spend more time grilling out than eating in!

6 Entering the coach is a simple and safe as it gets. The Avalanche's **keyless entry** keypad allows you to program your own unique lock and unlock code.

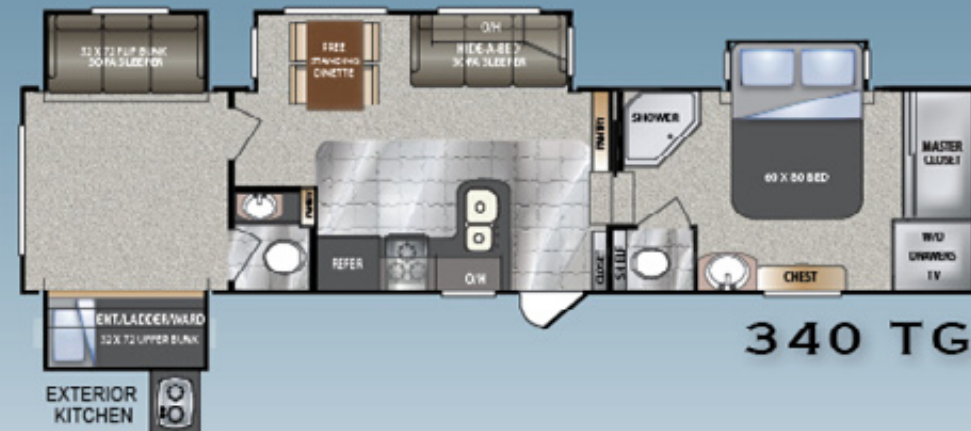
7 The Avalanche uses the slide out technology you see on million dollar motor coaches. These **hydraulic slides** move in and out **quicker, quieter, and smoother**. Above the slideout mechanism, you'll see easy to operate selector valves that allow you to move individual slideouts in or out if need be.

8 Storage compartments are easy to access in the Avalanche thanks to the motorhome style **"slam" baggage doors**. These compartment doors feature easy opening pad handles, oversized struts immediately raise the door up high and out of the way.

9 The Avalanche's **fully enclosed and heated "Water Works" compartment** houses your dump valves, low point drains, exterior shower, black tank flush hookup, quick winterization kit, city water hookups, and even an easy-to-fill soap dispenser!



LOOK FOR AVALANCHE
WALK AROUND VIDEOS
ON OUR WEBSITE!



	290RL	320RK	330RE	340TG	345TG
SHIPPING WEIGHT	10575	10285	11719	11826	11325
CARRYING CAPACITY	3425	3715	2581	2554	2675
HITCH	2050	2360	2300	2380	2050
EXTERIOR LENGTH	34' 2"	36' 4"	38' 7"	38' 3"	38' 2"
EXTERIOR HEIGHT	12' 11"	12' 11"	12' 11"	12' 11"	12' 5"
FRESH WATER GAL.	66	66	66	66	66
WASTER WATER GAL.	50	50	50	85	50
GREY WATER GAL.	85	85	85	85	85





Keystone's founders kept costs down by watching every penny and keeping overhead low. Building the best RV for the money was the goal and this simple principle became the driving force behind every decision made at Keystone RV.

In just 14 short years, Keystone has grown to be the largest towable manufacturer in the world. With 19 brands, state-of-the-art production and service facilities, unmatched purchasing power, and the strongest emphasis on efficiencies and quality in the industry, Keystone is the industry standard in excellence.

By truly listening to our customers and empowering people who are closest to the customers to make product decisions, Keystone has become the leading innovator in our industry.

Each year, new innovations and improvements allow us to set the bar higher-- a bar the competition is left chasing.

These philosophies have not been lost as we have grown into the industry's #1 manufacturer, and these same principals were put into developing our new full profile fifth wheels, the Alpine & Avalanche. Innovation, quality, functionality, and aesthetics are woven into every fiber of the Avalanche.

So, it is with great excitement and enthusiasm that we introduce to you our newest product, which we have aptly dubbed "The next generation of fifth wheel"... The Avalanche.

Happy Camping,

Team Keystone



ATTENTION TO DETAIL

Extraordinary products are made by extraordinary people, and Keystone RV is proud to employ the finest in the industry. The majority of the Avalanche team has been part of the Keystone RV family for many years — an All-Star cast if you will — bringing a great deal of experience and product knowledge to every Avalanche that rolls off the line.

From our dealer partners and customers that provide a wealth of product feedback and suggestions to the product development team and craftsmen on the line, the entire Avalanche team is dedicated to making our product the finest on the market — while maintaining our reputation as "The Next Generation of Fifth Wheel".

AVALANCHE
By Keystone

STANDARDS & OPTIONS

www.Keystone-Avalanche.com

EXTERIOR FEATURES

MAX TURN HIGH-GLOSS FIBERGLASS FRONT CAP & REAR FEATURING:

- 30% better turning radius
- Aerodynamic design w/ 18% better drag efficiency
- Hitch Assist back up mirror w/ lights
- Class "A" style dual latch "slam" baggage doors
- Keyless Entry
- Super-size 6'4" tall, 30" wide entry door
- Deluxe Graphics package
- One piece polypropylene underbelly
- Triple insulated, ducted and heated holding tanks

ALL-IN-ONE "WATERWORKS" EXTERIOR UTILITY CENTER FEATURING:

- Easy siphon winterization system
- Water heater bypass
- Enclosed low point drain valves
- Ducted heat for cold weather protection
- Dump valves
- Soap dispenser
- 110V outlet
- Black tank spray hookup
- 16" F-load radial tires w/ 8 wheel lugs
- Heavy duty 6,000lb axles
- Easy lube axles
- 10" Beams with Z-frame technology

EQUA-FLEX SUSPENSION FEATURING:

- Improved impact absorption
- Improved axle equalization
- Greasable "wet" bolts
- Long lasting 1/2" steel shackles plates
- Long lasting bronze bushings
- "No Sweat" vented attic system
- 50AMP service w/ detachable power cord
- Hydraulic selector valves for slideouts
- Power front landing jacks
- Gutters w/ rain spouts
- Rear Ladder
- One-Touch electric awning package w/ adjustable arms
- Tinted 80% safety-glass windows
- Electric rear jacks

INTERIOR FEATURES

UPGRADED APPLIANCE PACKAGE FEATURING:

- High output range w/ 22" oven
- 12 Gallon DSI 2-way water heater
- 35,000 BTU furnace
- Heavy duty residential ball bearing drawer guides
- Extra deep, fully extendable drawers
- Corian Countertops
- Corian sink cover
- Stainless steel extra deep sink with dual bowls
- High rise, single lever kitchen faucet
- Maximized kitchen storage w/ more drawers and pantry space

SUPER CINEMA PACKAGE FEATURING:

- Huge LCD TV
- True surround sound system and directionals
- Name brand DVD player
- Digital TV antenna w/ built in booster
- Dual cable & satellite hookups
- "Sleep & Store" upgraded sofa and air mattress in living room
- 4 high back dinette chairs with built in storage
- Residential dinette w/ wide base, hidden leaf, and center storage
- Extra tall 6'5" main slide height
- Day/night shades
- Ceiling fan with upgraded lighting fixtures
- Telephone jack
- LP leak detector
- "One Place Command Center" centrally located operational switches & gauges
- Huge 38" shower with molded seat
- Translucent glass shower door & enclosure
- Hand held massaging shower head
- Skylight over shower
- Porcelain toilet
- Single level master bedroom suite
- Residential 60" x 80" queen bed
- "Cloud Nine" pillow top mattress
- Designer headboard
- Cross ventilation bedroom windows where available
- Quilted bedspread and pillows

BASE CAMP COLLECTION

- Solid cherry cabinet doors, drawers, stiles and hardwood fascia
- "Sleep & Store" upgraded sofa and air mattress in living room
- Corian® kitchen countertops and flush mounted sink covers
- Wire and brace for second A/C in bedroom
- LCD TV in living room
- Washer and dryer prep
- 50 AMP service

WHITEOUT PACKAGE

- Thermo-Shield R37 tank wrap
- Drop frame technology
- Class A bus-style latch "slam" baggage doors
- Electric front and rear jacks
- Rear bumper bike receiver
- Aluminum wheels
- Upgraded Equa-Flex suspension



LOOK FOR AVALANCHE
WALK AROUND VIDEOS
ON OUR WEBSITE!



AVALANCHE
By Keystone

OPTIONS

- | | | |
|---------------------------|-----------------------|------------------|
| • Electric Fireplace | • LCD Bedroom TV | • RVIA Seal |
| • Fantastic Fan (kitchen) | • Dual Pane Windows | • Winterization |
| • Generator Prep | • Booth Dinette | • Go RV MEP Seal |
| • Dual A/C Package | • Canadian Compliance | |

PURCHASING YOUR RV LOCALLY

It's up to you where you purchase your new Avalanche, but may we suggest your local dealer? Not only does it help your local economy and provide jobs, but it will also give you an opportunity to develop a service relationship with someone that will come to know you and your coach. Keep in mind, a dealer is required to provide warranty work on units they sell, but are not obligated to provide service on units bought elsewhere. Congratulations on finding the best built, best equipped, best value in the industry, and happy travels!

Go RVing
Life's A Trip

RVIA
RECREATIONAL VEHICLE
INDUSTRY ASSOCIATION

Keystone RV Company

www.keystonerv.com

2612 Heckberry Drive | PO Box 2000
Goshen, IN 46527-2000 | (574) 535-2100

Product information is as accurate as possible as of the date of publication of this brochure. Features, floorplans, and specifications are subject to change without notice. Please also consult Keystone's web site at www.keystonerv.com for more current product information and specifications. **CAUTION:** Owners of Keystone recreational vehicles are solely responsible for the selection and proper use of tow vehicles. All customers should consult with a motor vehicle manufacturer or their dealer concerning the purchase and use of suitable tow vehicles for Keystone products. Keystone disclaims any liability or damages suffered as a result of the selection, operation, use or release of a tow vehicle. KEystone's LIMITED WARRANTY DOES NOT COVER DAMAGE TO THE RECREATIONAL VEHICLE OR THE TOW VEHICLE AS A RESULT OF THE SELECTION, OPERATION, USE OR RELEASE OF THE TOW VEHICLE. (K200)