

# THE ULTIMATE luxury crossover

Travel Trailers and Fifth Wheels

cross-o-ver [ kraws-oh-ver, kros ] noun

1 the most versatile and only multi-purpose travel trailers and fifth wheels on the planet allowing you to transform your space into whatever you choose.



# XL-Wall



PARTY ROOM



BUNKHOUSE



GARAGE AREA



LIVING ROOM



Enduramax is not just a toy hauler, it's whatever you want it to be.

Every Enduramax Crossover fifth wheel comes standard with the patent-pending XL-Wall. The XL-Wall is the first removable vapor wall that allows you to use the rear twelve feet for multiple uses! The XL-Wall when sealed shut is a vapor sealing wall that gives you a temperature controlled, water resistant garage area! But while open gives you so much more rear living, bunkhouse, party area, screen room, or kids room, making Enduramax a true multi-purpose crossover fifth wheel.



Model 4012END

# EnduraMax



Model 3912END

Welcome to the  
**atrium  
room**

The all new Model 3912END is the first ever upper deck kitchen crossover that gives you that sunken living room feel. It even offers such amenities as a kegerator option that can be replaced with a prepped closet for a washer and dryer combo, and a fireplace. The patented atrium room is the first to have skylights built right into the slide out!





1. 3714END with the patent pending XL-Wall featuring a massive 14' garage for your toys!
2. 3612END and 3714END with the patented atrium room unlike anything else in the industry.
3. 4050END with a huge 14 cu. ft. refrigerator, large island, and tons of overhead storage!
4. 3912END has the first ever upper deck kitchen allowing for an extraordinary living space.
5. 3950END and 4050END featuring a half bath inside the garage area!

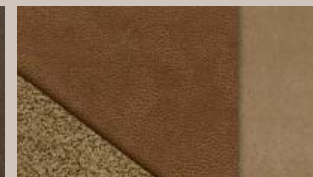
## DECOR OPTIONS



Fusion



Mahogany

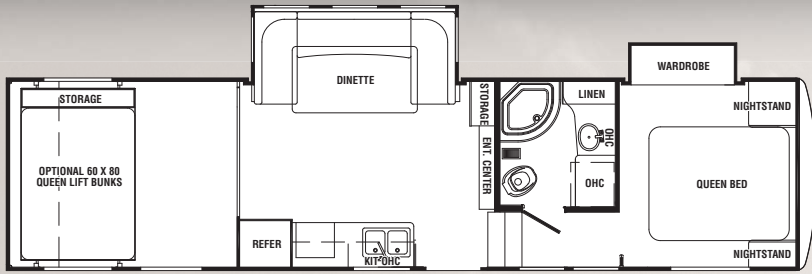


Saddle

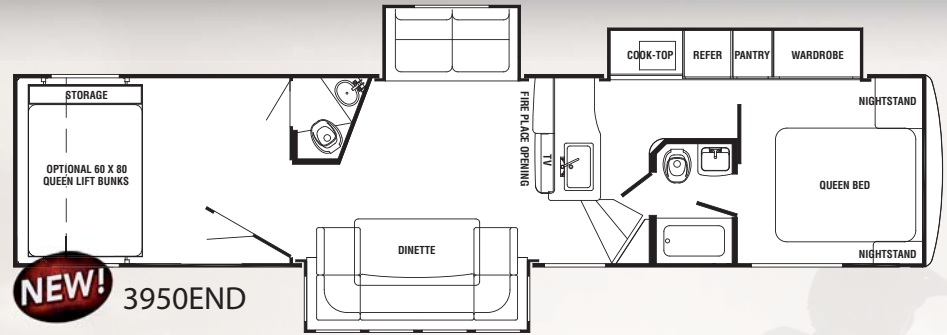


Tuscany

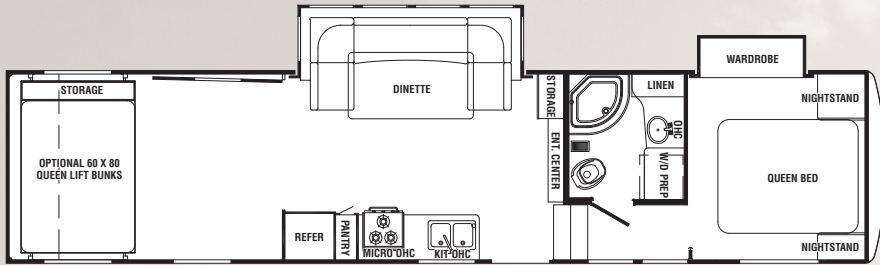
# EnduraMax Floorplans



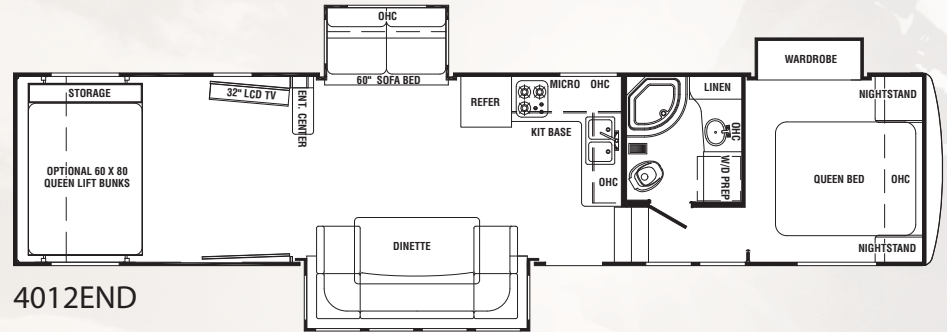
3310END



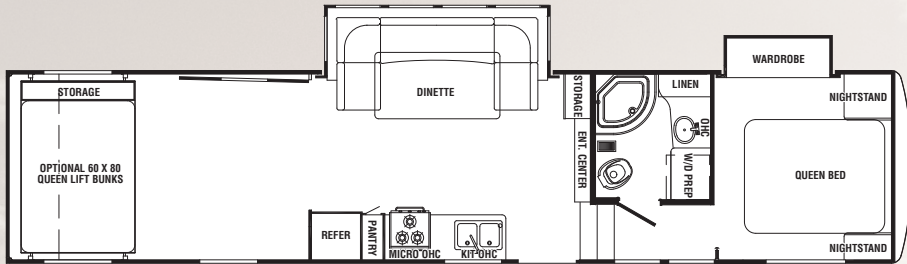
**NEW!** 3950END



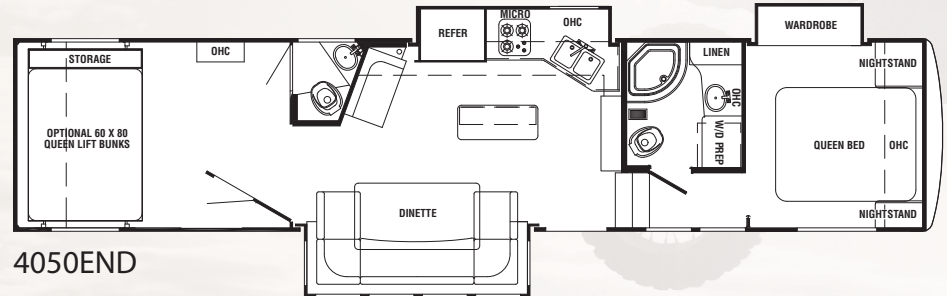
3612END



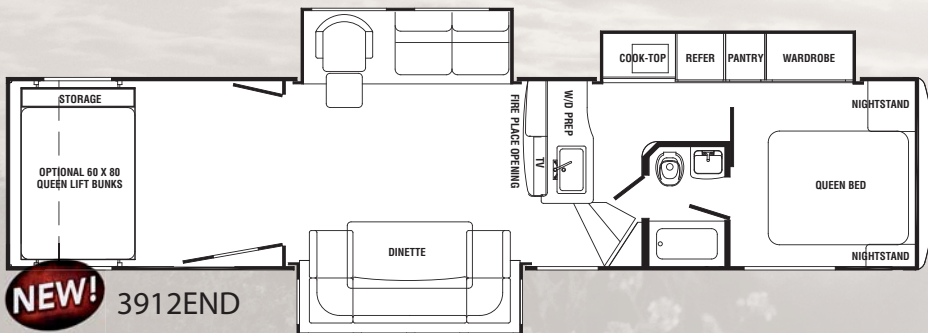
4012END



3714END with 14' garage!



4050END



**NEW!** 3912END



# STANDARDS AND OPTIONS

## CONSTRUCTION

- » 102" Full Wide Body Design
- » 12" I-Beam with Tubular Cross Members
- » Aircraft Grade, Fully Welded Aluminum Cage Construction
- » Vacuum Bonded Laminated Walls
- » EPS Foam Insulation Walls 9, Roof 21, Floor 24
- » 101" Long Cargo Ramp Door
- » 3,000 Lbs. Rated Ramp Door
- » Hinge Integrated Ramp Door Spring With Grease Zerks
- » Anti-Theft Locking System and Security Alarm
- » 24" Dove Tail at Ramp Door
- » Radius Safety Glass Windows
- » Aluminum Rims
- » Fully Enclosed Underbelly
- » 6 Wheel Electric Brakes
- » All Hardwood Cabinets
- » All Hardwood Drawers with Drawer Glides and Rollers

## STANDARD INTERIOR

### Galley

- » Large 14 Cu. Ft. 4 Door Refrigerator (Some Models)
- » 3 Burner High Output Range
- » Lighted Range Hood with Power Vent
- » Double Basin Stainless Steel Sink
- » High Rise Pull-Out Faucet
- » Comfort Plus Innerspring Furniture

### Bath

- » Foot Pedal Flush Marine Toilet
- » Waterfall Glass Shower Door
- » One-Piece ABS Shower Surround
- » Skylight Over Shower
- » Power Roof Vent

### Cargo Area

- » 98" Interior Width
- » 95" Garage Door Width
- » Passive Air Vents
- » Large Overhead Garage Cabinets
- » Mini-Blinds Over all Windows
- » Power Roof Vent
- » Rotair Ducted Heat Supply
- » Two 110V Outlets
- » Pre-Wired for A/C Unit
- » Cable Jack

### Master Suite

- » Hardwood Slide Out Fascia and Corner Blocks
- » All Hardwood Drawers with Dual Sided Residential Drawer Guides and Rollers
- » Innerspring Queen Mattress
- » Color Coordinated Bedspread
- » Full Wardrobe with Two Mirrored Slider Doors
- » Under Bed Storage with Gas Strut Assist
- » Two Throw Pillows
- » 12V Outlet
- » Separation Door for Bedroom
- » Pre-Wired for A/C Unit

### Decor

- » Color Coordinated Pleated Cloth Shades Throughout Living Area
- » Antique 12V Ceiling Fan
- » Decorator Mirrors
- » Box Valances with Hard Lambrequins

### Safety

- » LP Leak Detector
- » Safety Glass Windows
- » Carbon Monoxide Detector
- » Fire Extinguisher
- » Smoke Detector
- » Ground Fault Interrupter (GFI) Circuit
- » Breakaway Switch

## STANDARD EXTERIOR

- » Aero Molded Composite Hi-Gloss Front Cap with Lights
- » Separated Garage Door
- » Aerodynamic ABS Fenders
- » Huge Pass Through Storage
- » Triple Entry Step at Main Door
- » Huge Electric Awning
- » 2 Ramp Door Flood Lights
- » Hitch Light
- » Rear Stabilizer Jacks
- » Detachable Roof Ladder
- » Patio Lights
- » TV Antenna, Booster Package
- » DSS Pre-Wired
- » Two Exterior Speaker Systems with Kill Switch

### System

- » 50 Amp Service
- » 10 Gallon Gas/Electric Water Heater with DSI
- » Water Bypass System
- » Demand Water Pump
- » 80 Amp Electronic Converter
- » 40,000 BTU Furnace
- » Twin 30 Lbs. Cylinders
- » Outside Shower with Pressure Nozzle
- » Motorized Landing Legs
- » 15,000 BTU A/C with Quick Cool
- » Battery Disconnect Switch
- » Black Tank Flush

## POPULAR OPTIONS

- » Mor-Ryde Dampened Pin Box
- » Super Slick High Gloss Gel Coat Exterior (White)
- » Super Slick High Gloss Grey Gel Coat Exterior
- » Rear Cargo Screen Wall
- » Full Body Paint with 3 Color Choices
- » Thermal Pane Windows
- » Basement Pull-Out TV

- » Bedroom Pull-Out TV
- » Back-Up & Security System with Monitor Panel
- » Generator Package
- » F.S. Dinette with 4 Chairs
- » Central Vacuum System
- » King Bed Option
- » Fireplace (Only Available on Certain Models)
- » Kegerator Option (Only Available on Certain Models)

### Supreme Package (REQUIRED)

- » 32" Flat Screen TV
- » High Output AM/FM/CD/ DVD Player with High Output Speakers, Amplifier, and Sub-Woofer
- » Solid Hardwood (Brentwood Cherry) Cabinets and Stiles
- » Solid Hardwood (Brentwood Cherry) Slide Room Fascia
- » Residential Brentwood Cherry Interior Doors
- » Elegant Crown Molding in Living Area
- » LED Marker Lights and Docking Station Light
- » Aluminum Super Structure
- » XL-WALL (Removable Vapor Wall for Extended Living)
- » Solid Surface Countertops
- » 16" Aluminum Racing Rims

### Jolt Package

- » Electric Awning
- » 32" LCD TV with Swing Arm
- » Rear Power Beds with Rollover Sofa
- » 5.5 Onan Generator
- » Rear Electric Jacks

### Garage Package

- » Beaded Fiberglass Interior Walls
- » Floor Drains
- » TPO (Fuel & Oil Resistant) Flooring Material
- » Adjustable Track System
- » Carpet Kit

Enduramax Specs	3310END	3612END	3714END	3912END	3950END	4012END	4050END
Axles	3 x 6,000 Lbs.	3 x 6,000 Lbs.	3 x 6,000 Lbs.	3 x 6,000 Lbs.	3 x 6,000 Lbs.	3 x 6,000 Lbs.	3 x 6,000 Lbs.
Tire Size	16"	16"	16"	16"	16"	16"	16"
Fresh Water	110 Gal.	110 Gal.	110 Gal.	110 Gal.	110 Gal.	110 Gal.	110 Gal.
Grey Tank	94 Gal.	94 Gal.	94 Gal.	54 Gal.	84 Gal.	54 Gal.	84 Gal.
Black Tank	54 Gal.	54 Gal.	54 Gal.	54 Gal.	84 Gal.	54 Gal.	84 Gal.
Hot Water Heater	10 Gal.	10 Gal.	10 Gal.	10 Gal.	10 Gal.	10 Gal.	10 Gal.
LP Capacity	2 x 30 Lbs.	2 x 30 Lbs.	2 x 30 Lbs.	2 x 30 Lbs.	2 x 30 Lbs.	2 x 30 Lbs.	2 x 30 Lbs.
Dry Weight	12,400 Lbs.	12,800 Lbs.	13,100 Lbs.	13,700 Lbs.	13,900 Lbs.	13,800 Lbs.	14,200 Lbs.
GVWR	18,000 Lbs.	18,000 Lbs.	18,000 Lbs.	18,000 Lbs.	18,000 Lbs.	18,000 Lbs.	18,000 Lbs.
Exterior Height (Top of A/C)	13'	13'	13'	13'	13'	13'	13'
Garage Dimensions	10' x 8'2"	12' x 8'2"	14' x 8'2"	12' x 8'2"	12' x 8'2"	12' x 8'2"	12' x 8'2"
Overall Length	35'	38'2"	40'2"	40'10"	40'10"	40'10"	40'10"

**FULL BODY PAINT AVAILABLE!**  
Call your dealer for details.



# EnduraMax SPORT



15 HDMI 10V

VIZIO



Welcome to the  
**party pad**

The all new 30MFW ultra lightweight fifth wheel truly shows the concept of the crossover with the 12' garage area being completely converted into usable living space with the XL-Wall in the open position. The heated, air conditioned area that has insulated floors, unlike a lot of our competitors, truly allows you to use this as a functional living space.





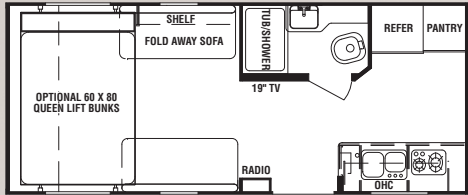
This is the first ever full wall slide put into a crossover fifth wheel! The slide out is 17' long with a 7'3" tall interior height which gives you the look of a triple slide at the cost and weight of a single slide!

### ▼ Drop Down Queen Bed

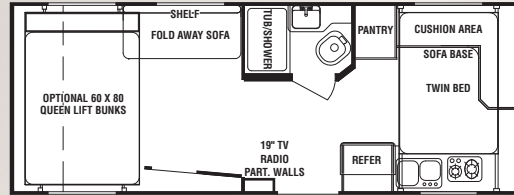
This is the first front drop down queen bed available in the 27MTT and 23MTT travel trailers. This option allows you to utilize your space more efficiently, by providing you with a huge kitchen and dinette area, and at the touch of a button a front bedroom.



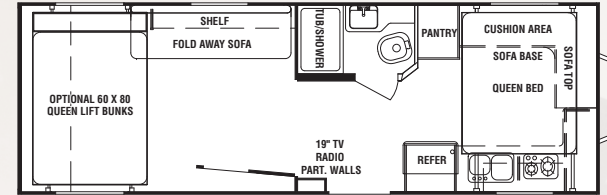
#### TRAVEL TRAILERS



19MTT

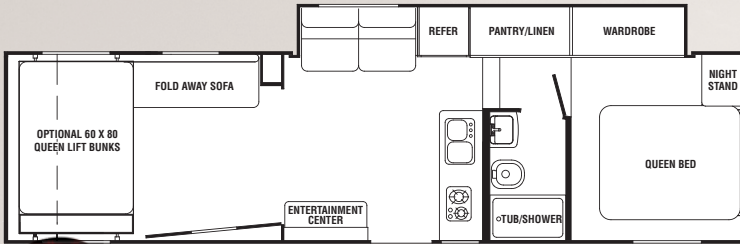


23MTT

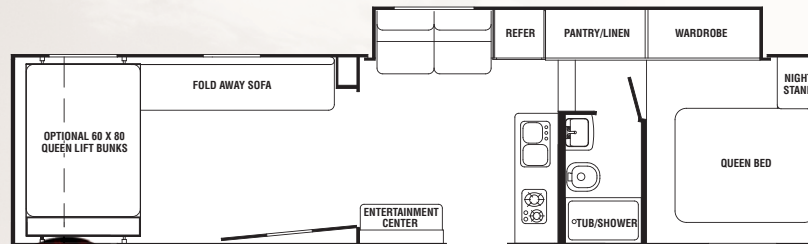


27MTT

#### FIFTH WHEELS



**NEW!** 30MFW



**NEW!** 33MFW with 15' garage!



Travel Trailer



Fifth Wheel

# STANDARDS AND OPTIONS

## CONSTRUCTION

- » 102" Full Wide Body Design
- » 8" I-Beam with Tubular Cross Members
- » Aircraft Grade, Fully Welded Aluminum Cage Construction
- » Vacuum Bonded Laminated Walls
- » 3,000 Lbs. Rated Ramp Door
- » Hinge Integrated Ramp Door Spring with Grease Zerks
- » Anti-Theft Locking System and Security Alarm
- » 24" Dove Tail at Ramp Door
- » Radius Safety Glass Windows
- » Aluminum Rims
- » Fully Enclosed Underbelly
- » All Hardwood Cabinets
- » All Hardwood Drawers with Drawer Glides and Rollers

## STANDARD INTERIOR

### Galley

- » Large 6 Cu. Ft. Refrigerator
- » 3 Burner High Output Range
- » Lighted Range Hood with Power Vent
- » Double Basin Sink
- » High Rise Faucet
- » Comfort Plus Innerspring Furniture

### Bath

- » Foot Pedal Flush Marine Toilet
- » Shower Curtain
- » One-Piece ABS Tub Surround
- » Power Roof Vent

### Cargo Area

- » 98" Interior Width
- » 95" Garage Door Width
- » Passive Air Vents
- » Large Overhead Garage Cabinets
- » Mini-Blinds Over all Windows
- » Power Roof Vent

- » Rotair Ducted Heat Supply
  - » Two 110V Outlets
- ### Master Suite
- » Hardwood Slide Out Fascia and Corner Blocks
  - » All Hardwood Drawers with Dual Sided Residential Drawer Guides and Rollers
  - » Innerspring Queen Mattress
  - » Full Wardrobe with Two Mirrored Slider Doors (Some Models)
  - » Under Bed Storage with Gas Strut Assist (Some Models)
  - » Separation Door for Bedroom

### Decor

- » Color Coordinated Pleated Cloth Shades throughout Living Area
- » Decorator Mirrors
- » Box Valances with Hard Lambrequins

### Safety

- » LP Leak Detector
- » Safety Glass Windows
- » Carbon Monoxide Detector
- » Fire Extinguisher
- » Smoke Detector
- » Ground Fault Interrupter (GFI) Circuit
- » Breakaway Switch

## STANDARD EXTERIOR

- » Aerodynamic ABS Fenders
- » Huge Awning
- » 2 Ramp Door Flood Lights
- » Hitch Light
- » Rear Stabilizer Jacks
- » Patio Lights
- » TV Antenna, Booster Package
- » DSS Pre-Wired
- » Two Exterior Speaker Systems with Kill Switch

## System

- » 30 Amp Service
- » 6 Gallon Gas/Electric Water Heater with DSI
- » Water Bypass System
- » Demand Water Pump
- » 55 Amp Electronic Converter
- » Twin 30 Lbs. Cylinders
- » Outside Shower with Pressure Nozzle
- » 13,500 BTU A/C with Quick Cool
- » Battery Disconnect Switch

## POPULAR OPTIONS

- » LCD Flat Screen Pull-Out TV
- » Generator Package
- » Fuel Station
- » Power Awning
- » Electric Front Tongue Jack
- » Rear Cargo Screen Wall
- » Patent Pending XL-WALL (Removable Vapor Wall)
- » Front Power Bed (Only on Certain Models)

## Supreme Package (REQUIRED)

- » High Output AM/FM/CD/ DVD Player with High Output Speakers
- » Solid Hardwood (Brentwood Cherry) Cabinets and Stiles
- » Solid Hardwood (Brentwood Cherry) Slide Room Fascia
- » Residential Brentwood Cherry Interior Doors
- » LED Marker Lights and Docking Station Light
- » Aluminum Super Structure
- » Pleated Shades

## Sport Package (REQUIRED)

- » Aluminum Racing Rims
- » Swing Away Grab Handle
- » Stabilizer Jacks
- » Generator Rack
- » Carpet Kit

# DECOR OPTIONS



Fusion



Mahogany



Saddle



Tuscany

SPECIFICATIONS	TRAVEL TRAILERS			FIFTH WHEELS	
	19MTT	23MTT	27MTT	30MFW	33MFW
Axles	2 x 5,200 Lbs.	2 x 5,200 Lbs.	2 x 5,200 Lbs.	2 x 6,000 Lbs.	2 x 6,000 Lbs.
Tire Size	15"	15"	15"	16"	16"
Fresh Water	52 Gal.	52 Gal.	52 Gal.	52 Gal.	52 Gal.
Grey Tank	35 Gal.	112 Gal.	112 Gal.	54 Gal.	54 Gal.
Black Tank	28 Gal.	35 Gal.	35 Gal.	54 Gal.	54 Gal.
Hot Water Heater	6 Gal.	6 Gal.	6 Gal.	6 Gal.	6 Gal.
LP Capacity	2 x 30 Lbs.	2 x 30 Lbs.	2 x 30 Lbs.	2 x 30 Lbs.	2 x 30 Lbs.
Dry Weight	5,400 Lbs.	6,000 Lbs.	6,500 Lbs.	8,400 Lbs.	TBD
GVWR	10,500 Lbs.	10,500 Lbs.	10,500 Lbs.	12,000 Lbs.	12,000 Lbs.
Exterior Height (top of A/C)	11'6"	11'6"	11'6"	11'9"	11'9"
Garage Dimensions	10' x 8'2"	10' x 8'2"	12' x 8'2"	12' x 8'2"	15' x 8'2"
Overall Length	23'	27'10"	30'10"	32'	35'
Pin Weight	690 Lbs.	980 Lbs.	1,190 Lbs.	1,490 Lbs.	TBD



# EnduraMax

FOR MORE INFORMATION VISIT US AT

[www.enduramaxrv.com](http://www.enduramaxrv.com)

LUXURY CROSSOVER FIFTH WHEELS



CROSSOVER FIFTH WHEELS



CROSSOVER TRAVEL TRAILERS



**EnduraMax** P.O. Box 1005, Nappanee, IN 46550

Official Enduramax Dealer:

**24 MONTH WARRANTY ON STRUCTURAL COMPONENTS\***

1 year total use warranty under normal use against defects in material and/or workmanship in construction and original components. \*For purposes of this warranty, "structural components" shall be limited to the structure of the side walls, front and back walls, roof and floor. See the official written Gulf Stream Coach, Inc. Warranty for details.

In addition to our standard one year warranty, Gulf Stream Coach, Inc., offers an exclusive 24 month warranty on structural components. In addition, major component manufacturers are providing 24 month warranties on their products installed in Gulf Stream units such as refrigerators, antenna, furnace, water heater, air conditioner, awning, range, microwave and more. See the official written Gulf Stream Coach, Inc., Warranty for details.

\*for purposes of this warranty, "structural components" shall be limited to the structure of the side walls, front and back walls, roof and floor.

For more information and available options, contact your local Gulf Stream dealer, [www.gulfstreamRV.com](http://www.gulfstreamRV.com) or Gulf Stream Coach, Inc. Gulf Stream Coach, Inc., reserves the right to make changes in prices, colors, materials, components and specifications and to discontinue models at any time without notice or obligation. Gulf Stream Coach, Inc., assumes no responsibility for any error in type or print reproduction of specifications or floorplans in this brochure. Photographs may show equipment or items that are optional and are not included in the purchase price of the coach. Test drive and review a current model at your nearest Gulf Stream dealer. © 2010 Gulf Stream Coach, Inc., Nappanee, Indiana U.S.A.