



**YOU DON'T NEED A PASSPORT  
TO SEE THE WORLD.**



2009 TERRA & TERRA LX

**FLEETWOOD.**



## GETTING THERE IS ALL THE FUN.

Imagine yourself, your friends and your family heading out for adventure in your Terra. It practically makes your heart skip a beat. Exceptionally beautiful both inside and out, you'll be proud to show it off wherever you go. Terra boasts the high-quality construction and upscale features usually found in coaches that sell for thousands more. If it's this fun to dream about, just think how much fun it would be to own.



**The Bunkbeds** (34B model only) provide a cozy place to sleep or hang out. Each bunkmate can have their own optional flip-down LCD monitor with inputs for portable DVD or video game players.



**The Bedroom Suite** features a queen-size innerspring mattress with a plush comforter and pillow shams. Pull down the day/night pleated shades for an afternoon nap or to block out the moon at night.



**The Wardrobe** is residential size, which means plenty of space for your clothes and shoes. Before you head out, check your look in the full-length mirrored doors. Watch your favorite show from your comfy bed with the optional 19" LCD HDTV.





The Terra 34B shown in Sage Mist interior décor with Bijoux Cherry cabinetry.

## Why Buy Terra & Terra LX?

### Family-Friendly Design

There's lots of room inside for the whole gang to relax, a private bedroom suite for mom and dad, and a ton of storage outside.

### More for Your Money

Owning a Terra or Terra LX is a sure sign of a smart shopper with an eye for value.

### Comfy and Convenient

Each floor plan is carefully designed for comfortable, easy living. The fully equipped galley makes meals a breeze, and storage space is enormous.

### Built-In Safety Features

Dozens of safety features are built into Terra and Terra LX to provide peace of mind and protect your most precious cargo – your family.

### High-Quality Construction

We take great pride in our careful construction techniques, and the high quality of Terra and Terra LX shows in every detail.

### Fleetwood Reputation

With over 55 years in business, Fleetwood's reputation is second to none. We offer one of the most comprehensive warranties in the industry.



## WHEN ADVENTURE CALLS, YOUR FAMILY PICKS UP.

Maximize the good times with your family in your comfy Terra LX. It's been designed specifically for your needs. So whether you're into camping or tailgating, ATVs or jet skis, Terra LX is a perfect home base. It's got plenty of room, both inside and outside, to store your gear and supplies. And with a large towing capacity<sup>†</sup>, you can tow your boat, trailer, you name it. Yet there's still plenty of living space inside so everyone can spread out, thanks to the double slide-outs. That's the key to family harmony!

<sup>†</sup> Refer to footnote on the Weights & Measurements page for information.



**The Large Dinette** seats four comfortably in front of the big picture window. And with the Dream Dinette system, it easily becomes an extra bed at night - the table swings down and the cushions make into a mattress.



**The Galley** includes everything you need to prepare a feast: three-burner stove, oven, microwave, and large stainless steel sink. There's even wiggle room for your toes under the cabinets, thanks to handy toe kicks.



**The Refrigerator and Pantry** store enough food for a hungry family. The Dometic® refrigerator and freezer provide eight cubic feet of cooled space and the pantry has room for everyone's favorite snacks.







TERRA LX

The Terra LX 36T shown in Cyberspace Cafe interior décor with Bijoux Cherry cabinetry.



**The Overhead Galley Cabinetry** has a stylish design, with coordinated hardware and hidden hinges. The shelves are large enough for full-size plates and lined to protect your dishes in transit.





**The Bedroom Suite** features a queen-size innerspring mattress for cushiony comfort at bedtime, naptime or anytime. And unlike a hotel bed, it's yours and only yours.



**The Half Bathroom** (36T model only) gives you extra room to groom. The medicine cabinet and sink vanity holds your family's toiletries and beauty supplies.

## Home Sweet Terra LX.

At the end of a long day, you want to retire to your personal bed and bath. It's always waiting in Terra LX. These private spaces are designed for your comfort and convenience — things you appreciate even more away from home.



**The Master Bathroom** is clean, deluxe and all yours. The roomy shower provides extra headroom with a light-filled skylight, and its water saving feature helps you dry camp for longer periods.

## Decorate with Ease.

For Terra, the interior and exterior palettes are tied together for an overall, coordinated look. For Terra LX, mix and match your favorite interior with any of the four full-body paint exteriors to create your own look.

### Canyon

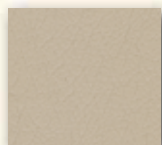
Living/Dining Room



Dinette Cushions



Sofa (optional)



Soft Touch Driver & Front Passenger Seats, Sofa

Bedroom



Bedspread



Bedroom Accent

### Cyberspace Café

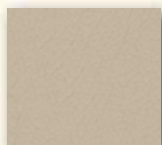
Living/Dining Room



Dinette Cushions



Sofa (optional)

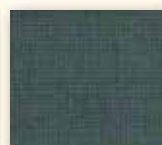


Soft Touch Driver & Front Passenger Seats, Sofa

Bedroom



Bedspread



Bedroom Accent

### Sage Mist

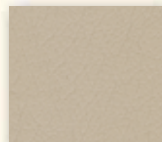
Living/Dining Room



Dinette Cushions



Sofa (optional)



Soft Touch Driver & Front Passenger Seats, Sofa

Bedroom



Bedspread



Bedroom Accent

### Wood Finishes



Plantation Cherry



Bijoux Cherry

## TERRA

- Rear-Mounted Fuel Fill** so you can pull into any space at the gas pump and fill up.
- Patio Awning** provides a shady spot for outdoor conversation.
- Electronic Holding Tank Level Sensor** determines tank levels more accurately.



- Pass-Through Storage** compartments with side-swinging luggage doors provide easy access to your items.

Vehicle shown in Sage Mist exterior graphics.

## TERRA LX

- DuPont® Full-Body Paint** is applied in a two-stage process for maximum durability and a striking finish.
- 22.5" Aluminum Wheels** provide a smooth ride and look good doing it.
- Power Rear View Mirrors** are heated to remove condensation or fog.



- Pass-Through Storage** compartments with side-swinging luggage doors provide easy access to your items.

Vehicle shown in River Rock exterior graphics.



Whatever color you choose, others will be green with envy.

You're sure to draw some admiring glances in your new Terra or Terra LX, no matter what exterior color you select.

**TERRA**



**SAGE MIST** (with Cyberspace Café and Sage Mist interiors)



**CANYON** (with Canyon interior)

**TERRA LX**



**CABERNET GOLD**



**RIVER ROCK**



**BLACK GOLD**

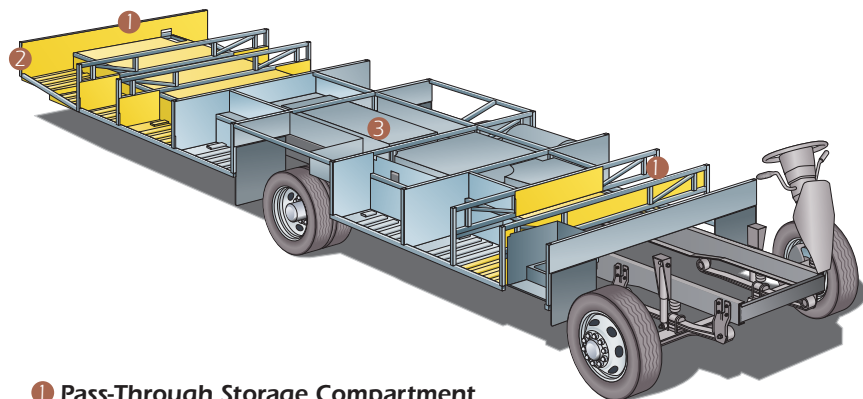


**SATIN STEEL**



# POWER PLATFORM®. BUILT FOR STRENGTH, STABILITY AND PASS-THROUGH STORAGE.

Fleetwood's patented Power Platform® is the envy of our competitors. The ultra-strong chassis provides enormous storage space, lined with molded plastic for easy cleaning and lit to help you see after dark. The holding tanks are positioned in the bottom to enhance balance, and enclosed so they can be heated in cold weather to help prevent freezing.



❶ Pass-Through Storage Compartment

❷ Large Towing Capacity†

❸ Center Mounted and Heated Holding Tanks

Drawings are for illustrative purposes only to highlight aspects of motor home construction. Actual motor home design depends on model and is subject to change.



**Pass-Through Storage** lets you access your stuff from either side of the motor home. With several compartments, you don't have to trim your packing list.

## FORD® CHASSIS/WORKHORSE™ CHASSIS

MODELS	29VS	33L	34B	36T
Engine Displacement (Liters)	6.8	6.8/8.1	6.8/8.1	6.8/8.1
Wheelbase (Inches)	208"	208"	228"	228"
GVWR (lbs) <sup>1</sup>	22,000	22,000	22,000	22,000
Front GAWR (lbs) <sup>2</sup>	7,500	7,500	7,500	7,500
Rear GAWR (lbs) <sup>2</sup>	14,500	14,500	14,500	14,500
GCWR (lbs) <sup>3</sup>	26,000	26,000	26,000	26,000
Hitch Rating Weight (lbs) <sup>†</sup>	5,000	5,000	5,000	5,000
Tongue Weight (lbs) <sup>†</sup>	500	500	500	500
Fuel Capacity (gal)	75	75	75	75

**Liquid Weight Reference:** Water (gal) = (8.3 lbs/3.8 kgs), Fuel (gal) = (6.1 lbs/2.8 kgs), Propane (gal) = (4.2 lbs/1.9 kgs)

**Metric Conversion:** Multiply pounds x 0.453 to obtain kilograms. Multiply gallons x 3.785 to obtain liters. Multiply liters x 61 to obtain cubic inches.

## DIMENSIONS & CAPACITIES

MODELS	29VS	33L	34B	36T
Overall Length <sup>4</sup>	30' 7"	34' 7"	35' 7"	37' 7"
Overall Height (with A/C)	12' 3"	12' 3"	12' 3"	12' 3"
Overall Width (maximum) <sup>5, 6</sup>	102"	102"	102"	102"
Interior Height (maximum)	79"	79"	79"	79"
Interior Width (maximum)	96"	96"	96"	96"
Fresh Water Holding Tank (gal)	50	50	50	85
Grey Water Holding Tank (gal)	40	40	40	40
Black Water Holding Tank (gal)	30	30	30	30
Appliance Propane Tank (gal) (WC) <sup>7</sup>	25	25	25	25
Water Heater Tank (gal)	6	6	6	6

**Model:** Ford®/Workhorse™

**Engine:** 6.8L Triton V10/8.1L Vortec™ V8

**Transmission:** Ford®, 5-Speed Automatic w/Overdrive  
Workhorse™, 6-Speed Automatic w/Overdrive

**Alternator:** 130 Amp/145 Amp

**Torque:** 457 lb-ft @ 3250 RPM/455 lb-ft @ 3200 RPM

**Horsepower:** 362HP/340HP

- GVWR (Gross Vehicle Weight Rating) is the maximum permissible weight of this fully loaded motor home. The GVWR is equal to or greater than the sum of the (UVW) unloaded vehicle weight plus the (OCCC) occupant cargo carrying capacity\*.
- GAWR (Gross Axle Weight Rating) is the maximum permissible loaded weight a specific axle is designed to carry.
- GCWR (Gross Combined Weight Rating) is the value specified by the motor home manufacturer as the maximum allowable loaded weight of this motor home with its towed vehicle. Towing and braking capacities may be different. Refer to Fleetwood and chassis manufacturer's manuals for complete information.
- Length measured from front bumper to rear bumper (excludes accessories).
- Excludes safety equipment and awnings.
- Motor homes feature a body-width over 96" which will restrict your access to certain roads. Before purchasing, you should research any state and/or province road laws which may affect your usage.
- Tank manufacturer's listed water capacity (WC). Actual propane capacity is 80% of water listing as required by the safety code.

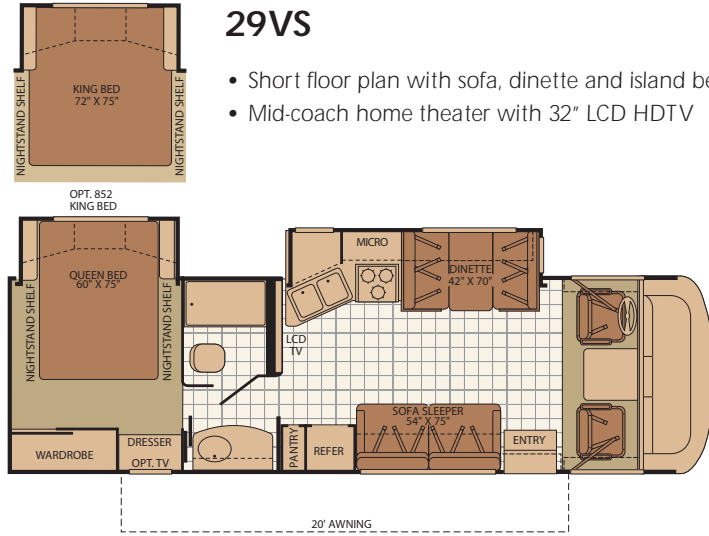
† The chassis manufacturer recommends the installation of a supplemental brake control system to activate the brakes on the vehicle or trailer you are towing. Hitch receiver ratings expressed are maximum for the hitch receiver installed and may require the purchase of additional equipment that is dependent on the weight of the towed load. Consult with hitch receiver manufacturer for further information.

\* UVW and OCCC are found on the label containing the federal certification tag in each RV.

**IMPORTANT — PLEASE READ:** Product information, photography and illustrations included in this publication were as accurate as possible at the time of printing. For further product information and changes, please visit our website at [www.fleetwoodrv.com](http://www.fleetwoodrv.com) or contact your local Fleetwood dealer. Prices, materials, design and specifications are subject to change without notice. All weights, fuel, liquid capacities and dimensions are approximate. Fleetwood has designed its recreational vehicles to provide a variety of uses for its customers. Each vehicle features optimal seating, sleeping, storage and fluid capacities. The user is responsible for selecting the proper combination of loads (i.e. occupants, equipment, fluids, cargo, etc.) to ensure that the vehicle's capacities are not exceeded.

## 29VS

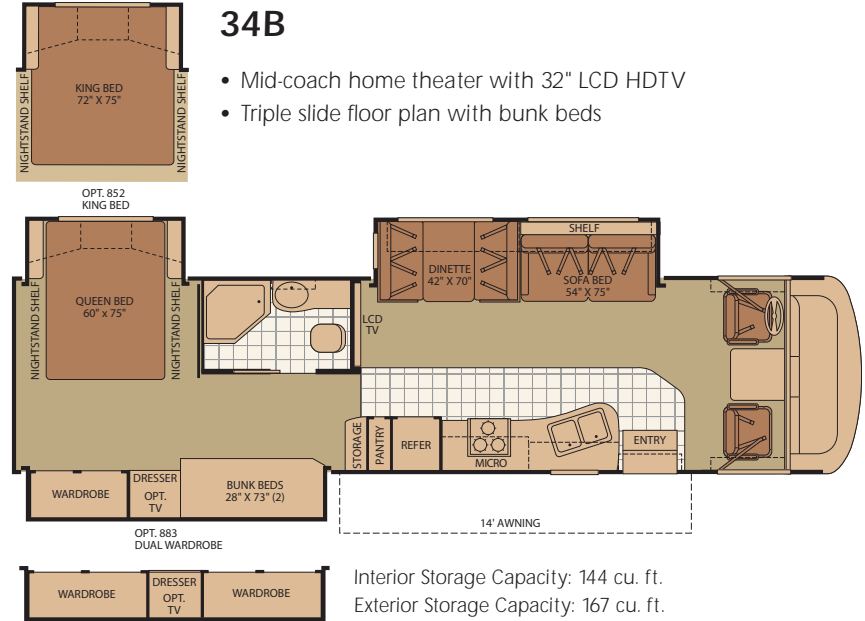
- Short floor plan with sofa, dinette and island bed
- Mid-coach home theater with 32" LCD HDTV



Interior Storage Capacity: 136 cu. ft.  
Exterior Storage Capacity: 103 cu. ft.

## 34B

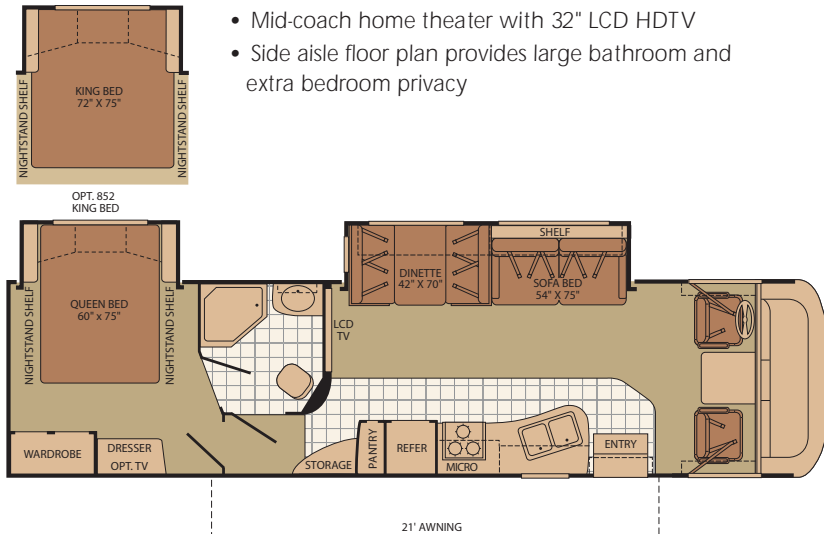
- Mid-coach home theater with 32" LCD HDTV
- Triple slide floor plan with bunk beds



Interior Storage Capacity: 144 cu. ft.  
Exterior Storage Capacity: 167 cu. ft.

## 33L

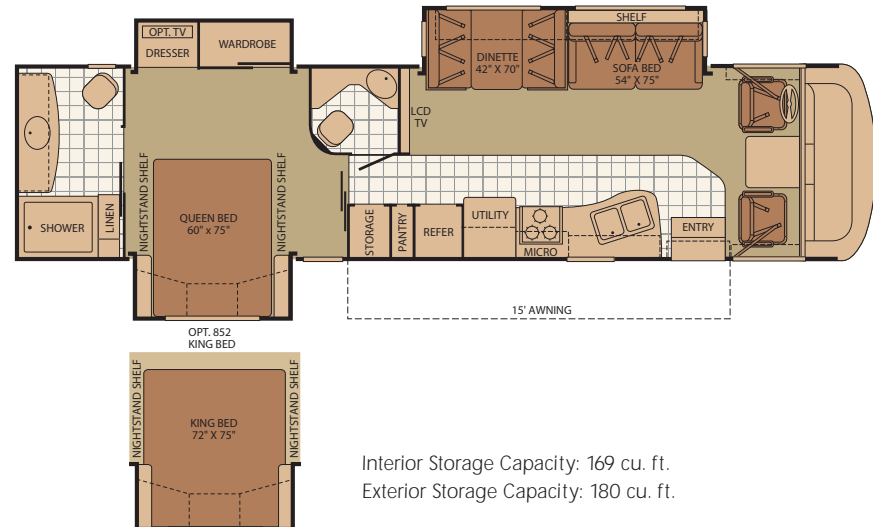
- Mid-coach home theater with 32" LCD HDTV
- Side aisle floor plan provides large bathroom and extra bedroom privacy



Interior Storage Capacity: 134 cu. ft.  
Exterior Storage Capacity: 155 cu. ft.

## 36T

- Bath and a half floor plan for maximum usability
- Mid-coach home theater with 32" LCD HDTV



Interior Storage Capacity: 169 cu. ft.  
Exterior Storage Capacity: 180 cu. ft.



## STANDARD FEATURES

### INTERIOR

#### INTERIOR-THROUGHOUT

- 15,000 Btu Ducted Air Conditioner
- 3 Interior Décor's
- 34,000 Btu Furnace
- 6 Gallon Quick Recovery Water Heater w/Direct Spark Ignition
- Battery Disconnect System
- Automotive A/C Heater Combo
- TuffPEX Plumbing System
- Deluxe Roller Bearing, Full Extension Drawer Guides
- Radius Edged Cabinet Doors & Drawer Fronts
- Hidden Cabinet Door Hinges
- On Demand Water Pump w/Filter
- Systems Monitor Panel
- 120V/12V AC/DC Converter
- Central Electrical Panel w/Charger
- Energy Management System
- Wall Mounted Heat Registers
- Water Heater Bypass

### DRIVER CONVENIENCE

- 3 Point Seat Belts at Driver & Front Passenger Seats
- AM/FM Radio w/CD & Electronic Tuning
- Auxiliary Start Circuit
- Cruise Control
- Double Swivel Sun Visors w/Map Pockets
- Flexsteel® Driver Captain's Chair w/Reclining Back/Slide Controls
- Flexsteel® Passenger Chair w/Reclining Back/Slide Controls/Footrest/Adjustable Armrests
- Intermittent Wiper Control
- Radio Switch Main/Auxiliary Power
- Tilt Steering Wheel
- Telephone Jack
- 12V Power Jack

### LIVING ROOM

- 32" LCD HDTV Mid-Coach Location
- Day/Night Pleated Shades
- Video Control Box
- Vinyl Floor Covering in Lavvy/Galley/Entry

### GALLEY

- 6 cu. ft. Dometic® Refrigerator
- 3 Burner Range w/16" Oven
- 30" Microwave
- Fan-Tastic® Power Roof Vent
- Coordinated Cabinet Hardware
- Large Stainless Steel Double Sink

- High Rise Faucet
- Wood Drawer Construction

### BEDROOM

- Wardrobe w/Mirrored Sliding Doors
- Innerspring Mattress
- Rear TV Receptacle
- TV Shelf w/Cable Jack (TV not included)
- Adjustable Reading Lights

### BATHROOM

- Porcelain Marine Toilet
- Molded ABS Shower/Tub w/Surround
- Power Bath Vent
- Skylight in Tub/Shower
- Glass Shower Door
- Medicine Cabinet w/Adjustable Shelves
- Vanity Lights

### SAFETY/CONVENIENCE

- 10 ABC Fire Extinguisher
- Carbon Monoxide Detector/Alarm
- Propane Detector/Alarm
- Smoke Detector/Alarm
- Entry Grab Handle
- Child Safety Tether
- Multiple Seatbelt Locations

### EXTERIOR

#### EXTERIOR THROUGHOUT

- 3 Colorway Graphics to Match Décor
- 30 Amp Service
- 4.0 kW Onan® MicroQuiet Generator
- Amber Porch Light
- Awning Rail/Drip Molding (Both Sides)
- Exterior Wash Unit
- Power/Heated Rear View Mirrors
- Full Basement Configuration
- Dometic® Patio Awning
- Radius Entry Door
- Roof Ladder
- TV Antenna w/Signal Booster
- ABS Front/Rear Wheel Well Trims
- 4 Point Automatic Levelers
- Dual 6V Deep Cycle 217 Amp Auxiliary Batteries

### AUTOMOTIVE

- Halogen Headlights w/Polycarbonate Lens
- Rear Fuel Fill
- Trailer Hitch w/7 Pin Electrical Hook-Up†
- 5,000 lb. Towing Capacity†
- 19.5" Stainless Steel Wheel Simulators

### SAFETY/CONVENIENCE

- Deadbolt Latch on Entry Door
- Dual Battery Charge Control
- High Mounted Taillights
- Lighted Entry Assist Handle
- One-Piece Swing-Down Engine Access Door
- Park Cable Receptacle
- Patio Receptacle
- Power Entry Step
- Automotive Safety Glass
- Daytime Running Lights
- Hydraulic 4 Wheel Disk Brakes w/4 Wheel Anti-Lock Brakes

### BODY STRUCTURE

- Aluminum Interlocking Floor/Wall/Ceiling Framing
- Vacu-bond® Floor and Ceiling
- Vacu-bond® Walls w/Smooth High Gloss Exterior Tuff-Coat® Fiberglass
- Fiberglass Front/Rear Cap
- Windshield Bonded to Fiberglass Front Cap
- One-Piece Royal Tuff-Ply Radius Roof
- Power Platform® Construction (Fleetwood Exclusive)

### STORAGE

- Large, Exterior Pass-Through Storage Compartments
- Lighted Luggage Compartments
- Insulated, Side-Swing Luggage Doors
- Rotomolded Polyethylene Luggage Compartments
- Continuous One-Piece Compartment Bulb Seal

## TERRA LX ADDITIONAL FEATURES

### INTERIOR

- Wood Cabinet Doors w/Raised Panels
- Vinyl Ceiling, Cushioned
- Color Rear Vision Camera/Monitor
- DVD Player
- 8 cu. ft. Dometic® Refrigerator
- 3 Burner Range w/22" Oven
- Molded Acrylic Shower w/Surround
- Satellite Radio Ready

### EXTERIOR

- 4 Graphic Color Choices
- Full Body Paint
- 22.5" Aluminum Wheels w/Stainless Steel Trim Kits

## TERRA OPTIONS

### INTERIOR

- Sirius Satellite Radio® (6 Month Subscription Included)
- DVD Player
- 8 cu. ft. Dometic® Refrigerator
- 19" LCD HDTV in Bedroom
- King Bed (Select Models)
- Wood Cabinet Doors w/Raised Panels
- Satellite Antenna

### EXTERIOR

- 30 Amp EMS w/5.5kW Generator/Dual A/C
- 50 Amp EMS w/5.5kW Generator/Dual A/C
- Spare Tire
- Side Turn Signal Camera

## TERRA LX OPTIONS

### INTERIOR

- 19" LCD HDTV in Bedroom
- King Bed (Select Models)
- Satellite Antenna
- Sirius Satellite Radio® (6 Month Subscription Included)

### EXTERIOR

- 30 Amp EMS w/5.5kW Generator/Dual A/C
- 50 Amp EMS w/5.5kW Generator/Dual A/C
- Side Turn Signal Camera

## FLEETWOOD ADVANTAGES

- Pass-Through Basement Storage with Side-Swing Doors for Easy Access
- Exciting Floor Plans with Mid-Coach 32" LCD HDTV
- Ultra High Gloss Fiberglass Walls for Striking Looks
- Interlocking Floor-to-Sidewall Construction for Improved Fit, Finish and Integrity
- Power Platform® Construction (Fleetwood Exclusive)



Class A Gas

#### RV OWNERCARE\*

Limited one-year/15,000-mile coach warranty and three-year/50,000-mile structural warranty, whichever occurs first, and it is fully transferable for the first 12 months. RV OWNERCARE is one of the RV industry's most comprehensive programs and includes systems, appliances, components and construction, with no deductible and no service charge. RV OWNERCARE coverage is provided from a company that will be around in the future to service your needs. See your nearest Fleetwood dealer for a full explanation of benefits and restrictions.

#### CONTACT US

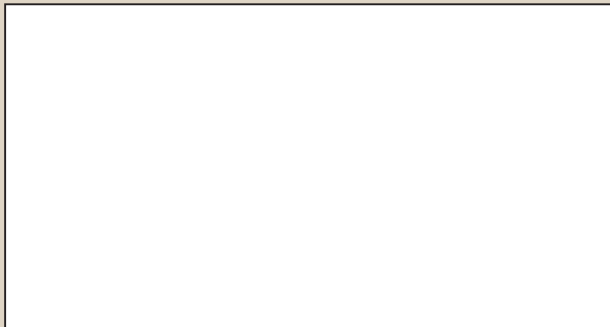
To locate a dealer near you, visit our website at [www.fleetwoodrv.com](http://www.fleetwoodrv.com) or call 1-800-444-4905. We can also be contacted at Fleetwood Customer Relations, P.O. Box 1007, Decatur, IN 46733.

#### FLEETWOOD MOTOR HOME CLUBS

As a Fleetwood owner, you're invited to become a member of several Fleetwood motor home clubs. Becoming a club member is the perfect way to meet other Fleetwood owners who love to travel across America and share in the RV lifestyle. Visit our website at [www.fleetwoodrv.com/owners\\_clubs](http://www.fleetwoodrv.com/owners_clubs) to learn more and join the fun.



YOUR LOCAL FLEETWOOD DEALER IS:



\*For complete info see your Fleetwood dealer.

©2008. Fleetwood Enterprises, Inc.  
Printed in the USA. Inventory Control Number TRA09B1, 10/08.  
Model Year 2009, First Edition.

#### IMPORTANT—PLEASE READ

Product information, photography and illustrations included in this publication were as accurate as possible at the time of printing. For further product information and changes, please visit our website at [www.fleetwoodrv.com](http://www.fleetwoodrv.com) or contact your local Fleetwood dealer. Prices, materials, design and specifications are subject to change without notice. All weights, fuel, liquid capacities and dimensions are approximate. Fleetwood has designed its recreational vehicles to provide a variety of uses for customers. Each vehicle features optimal seating, sleeping, storage and fluid capacities. The user is responsible for selecting the proper combination of loads (i.e. occupants, equipment, fluids, cargo, etc.) to ensure that the vehicle's capacities are not exceeded.

## WHY FLEETWOOD?



#### Quality

There's no cutting corners. Skilled craftsmen build every Fleetwood RV for maximum durability and longevity.



#### Trust

More people trust Fleetwood. After all, we've spent over 50 years perfecting RVs, earning the loyalty of generations of RVers.



#### Passion

We're truly passionate about the RV lifestyle. Fleetwood was founded by RV enthusiasts, and that tradition continues today.



#### Safety

You've got precious cargo. So we've engineered dozens of innovative safety features into our motor homes to give you more peace of mind.



#### Service

Help is nearby. When you need an upgrade or repair, you'll find Fleetwood dealers all across North America ready to assist you.



#### Warranty

Exclusive RV ownercare warranty. See your Fleetwood dealer for details.

