

Georgetown

GTX
by Forest River





THE 11'x8' Garage has plenty of space for all of your toys. It also provides a comfortable sitting and sleeping area, complete with a 19" LCD TV and a ladder for easy access to the roof.

Don't miss a second of the action with the GTX's exterior entertainment center.

GTX

by Forest River

STANDARD EQUIPMENT

- 13.5 Roof Air Duct
- Cable TV/Phone Jacks
- Electric Entrance Step
- 5000 lb Hitch
- Automatic Hyd. Leveling Jacks (4)
- Water Filtration System
- 6 Gal. D.S.I. Water Heater
- Pleated Blinds
- Slide Out Awnings
- Hide-A-Bed Sofa

XTREME PACKAGE (MANDATORY OPTION)

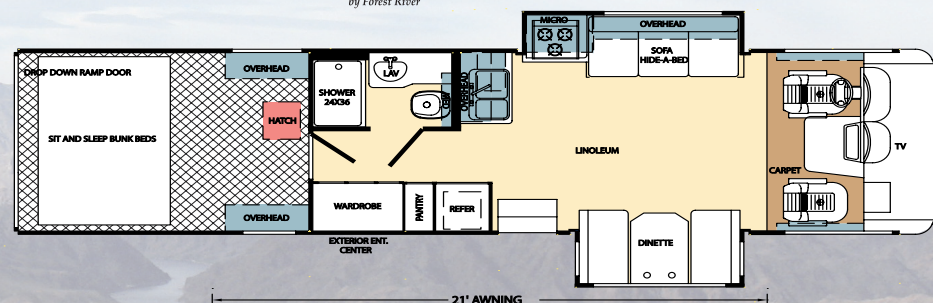
- Electric Bed & Lift
- Cargo Screen Door
- Rear Spots
- 19" LCD TV In Cargo Area
- Fantastic™ Fan
- Ext. 32" LCD TV Ent. Center

X TRACKER PACKAGE

- Outside Shower
- Generac 6.5 & 50 Amp Service
- A&E Electric Awning - Remote with Wind Sensor
- Rear Vision Camera
- Fuel Station
- 9' Stainless Steel Refrigerator
- Fiberglass Roof
- Gelcoat Fiberglass Sidewalls
- Roof Hatch with Ladder
- Countertop Extension
- Solid Surface Kitchen Countertop
- 30" Stainless Steel Microwave - OTR
- Stainless Steel Oven with Sealed Burners
- Pull Out Spray Faucet
- Halogen Flush Mount Lighting
- Linoleum Throughout

POPULAR OPTIONS

- 13.5 Roof Air Ducted (Rear)
- 15.0 Roof Air Ducted (IPO 13.5)
- 5.5 Onan Marquis W/ 50 Amp
- Black Tank Flush System
- Thermo Pane Windows
- Day Night Shades
- Defroster Fans (2)
- Remote Heated Mirrors
- Coach Battery (1) Additional
- 32" LCD HD TV - Home Theater (MANDATORY OPTION)
- Outside Shower
- Soft Touch Leatherette Sofa
- Side mount sofas IPO Electric Bed & Lift (N/C)
- Air Mattress Hide-A-Bed Sofa (N/C)



GCWR	26,000
GVWR	22,000
UVW	17,536
CCC	3,082
Wheel Base	228"
Fuel Capacity (gal.)	75
Tires	235/80R x 22.5 G
Interior Height	80"
Interior Width	96"
Overall Height w/AC	12' 5"
Overall Length	36'0"
Overall Width	100"
Black Water (gal)	41
Grey Water (gal)	41
Fresh Water (gal)	80
Propane tank (lb.)	105



Forest River, Inc. 58277 S.R. 19 South Elkhart IN, 46517 Phone: 574.296.7700

Fax: 574.295.8749 www.forestriverinc.com www.forestriveraccessories.com

All specifications contained herein are based on the latest product information at time of printing. Forest River reserves the right to make changes in colors, materials, equipment and specifications at any time without notice and assumes no responsibility for any errors in this brochure. PIP41808

