

2009

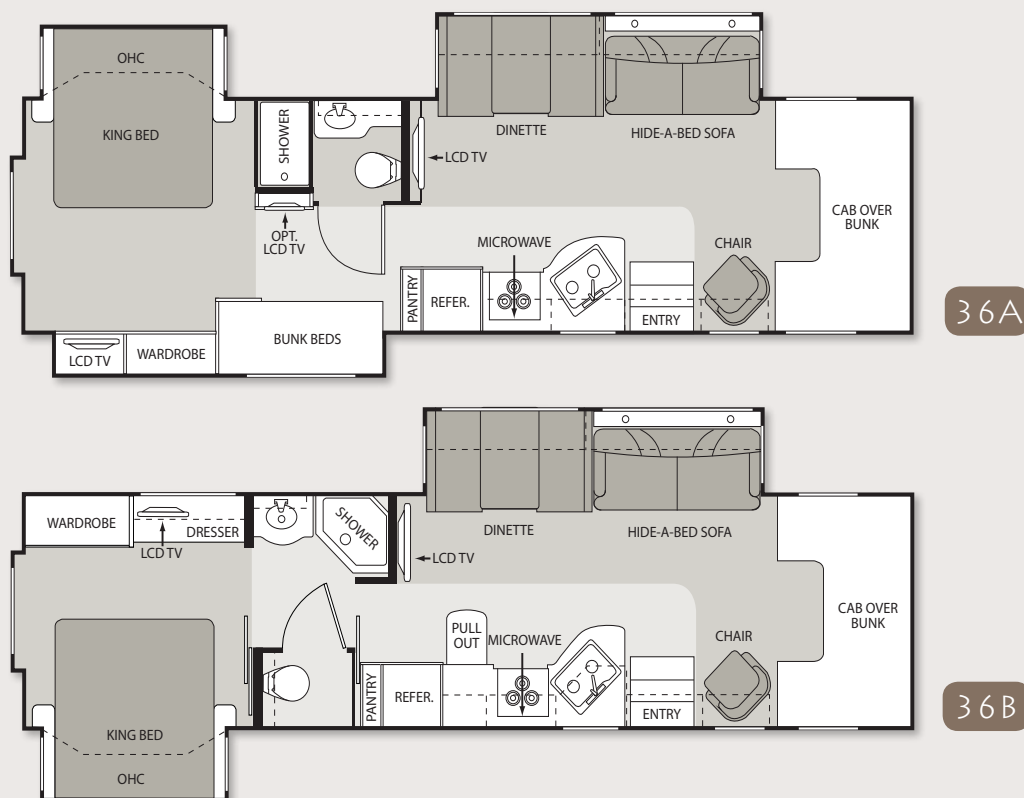
Dutchmen**KODIAK**

BY FOUR WINDS INTERNATIONAL

KEY FEATURES *Fw*

- Both models are built on a Chevy Kodiak chassis with a 26,000-lb. GVWR, 6.6-liter Duramax diesel engine and aluminum wheels
- New 36A and 36B floorplan features 32" LCD TV in living room entertainment center
- Optional dual LCD monitors with DVD at bunk beds (36A only)
- Dual 13,500 BTU air conditioners
- Solid surface kitchen countertop with sink and range covers

- 26" LCD television in bedroom
- Optional full-body paint package
- 10,000-lb. trailer hitch
- Side-hinged slab aluminum luggage doors
- E-Z Ride upgraded suspension for improved driving stability
- Onan® RV Quiet 6.0 diesel generator (6000-KW)
- Slick fiberglass with paint and graphics
- European style cabinetry and fixtures

FLOORPLANS *Fw***SPECIFICATIONS** *Fw*

Model		36A	36B
WEIGHT RATING (LBS.)	Chevy Kodiak chassis with 6.6-liter Duramax diesel engine	V-8	V-8
	Gross Vehicle (GVWR)	26,000	26,000
	Gross Combined (GCWR)	30,000	30,000
MEASUREMENTS	Wheel Base	259"	259"
	Exterior Length (without ladder)	37'6"	37'6"
	Exterior Height (with air conditioning)	12'5"	12'5"
	Exterior Width (without mirrors)	99"	99"
	Interior Height	84"	84"
	Awning Size	13'	19'
CAPACITIES	Fuel (gallons)	80	80
	LPG (pounds)	81.3	81.3
	Fresh Water (gallons)	100	100
	Waste Water (gallons)	48	44
	Gray Water (gallons)	54	54
	Water Heater (gallons)	10	10
	Furnace (BTUs)	30,000	30,000
	Exterior Storage Capacity (cubic feet)	90	85

2009 DUTCHMEN KODIAK STANDARD & OPTIONAL FEATURES

CUSTOMER VALUE PACKAGE (REQUIRED)			
Infiniss™ Leather driver and passenger captain's chairs	O	Automatic electric entry step	S
Back-up monitor	O	Outside shower	S
Fantastic® fan in kitchen	O	AUTOMOTIVE/COCKPIT	
Home theater system with DVD player and radio tuner	O	Aluminum wheels	S
Outside entertainment center with AM/FM stereo, CD player and speakers	O	Spare tire (steel rim)	O
Power bath vent	O	Factory AM/FM stereo with large buttons and CD player	S
Side-hinged slab aluminum luggage doors	O	3-point seat belts for driver and passenger	S
26,000 GVWR / 30,000 GCWR Chevy Kodiak Chassis	O	Power window and door locks	S
10,000-lb. trailer hitch	O	Upgrade dash insert with drink tray	S
E-Z Ride upgraded suspension for improved driving stability	O	Heated, remote exterior mirrors	S
84" interior ceiling height	O	Fully automatic hydraulic leveling jacks	S
European style cabinet doors with hidden hinges	O	Metal running boards	S
32" LCD television in living room	O	INTERIOR	
26" LCD television in bedroom	O	Residential linoleum (galley, bath and entry way)	S
King Bed	O	Metal entry grab handle	S
100 Gallon fresh water tank	O	Windshield privacy curtain	S
Innerspring dinette cushions	O	Dual 13,500 BTU roof air conditioners	S
Infiniss™ leather driver chair and passenger chair	O	Ceiling ducted air conditioning system	S
Back-up monitor	O	Cinnamon Maple cabinetry	S
Recessed 3-burner high-output cooktop with stainless steel convection microwave oven	O	Cherry cabinetry	O
BODY CONSTRUCTION/EXTERIOR		Hardware with Brushed Nickel finish	S
Fully welded tubular steel floor system	S	Day/night shades throughout	S
Fully welded tubular aluminum roof and sidewall cage construction	S	Soft Touch vinyl ceiling	S
Vacu-Bond laminated roof, walls and floors with high-density block foam insulation	S	Fluorescence ceiling lighting in living room	S
Fiberglass front and rear caps	S	Fabric hide-a-bed sofa (36A only)	S
Slick fiberglass exterior sidewalls	S	Infiniss™ Leather hide-a-bed sofa with air mattress (optional on 36A)	S
Exterior graphics with partial paint package	S	Infiniss™ Leather recliner	S
Full-body paint package with Gel-coat sidewalls	O	Leather Euro recliner with ottoman	O
Seamless roto-cast storage compartments	S	Fantastic® fan in cab-over	O
Premium one-piece TPO roof—Energy Star approved	S	Dual pane windows	O
Crown roof	S	GALLEY	
Manual patio awning	S	Double door refrigerator with Stainless Steel door inserts	S
Automatic electric patio awning with wind sensor	O	Power range hood	S
Slide-out room awning	S	Solid surface countertop with sink and range covers	S
Roof ladder	S	Flip-up countertop extension	S
Clear acrylic entry grab handle	S	Roll out countertop extension (36B only)	S
Rubber tread entry steps	S	Large double bowl sink	S
		Pantry with adjustable shelves	S
		Full extension metal drawer guides	S
		ENTERTAINMENT & ACCESSORIES	
		32" LCD television on electric swivel in cab-over	O
		Entertainment center with 32" LCD television and slide-out bunk	O
		19" LCD television in hallway for bunk beds (36A only)	O
		Dual LCD monitors with DVD player with headphones in the bunks (36A only)	
		Outside entertainment center includes a 26" LCD television, AM/FM stereo, CD/DVD player, iPod ready jack and speakers	O
		Television antenna and booster	S
		Cable television prep	S
		High-definition satellite dish	O
		HD/DSS satellite prep	S
		BEDROOM/BATHROOM	
		Bedsprad and pillow shams	S
		Bunk beds in hallway slide room (36A only)	S
		Incandescent ceiling lights	S
		Wardrobe with dresser	S
		China bowl toilet	S
		Skylight in shower	S
		Glass neo-angled shower (36B only)	S
		Shower with glass door (36A only)	S
		SAFETY & CONVENIENCE	
		Entry door with deadbolt lock	S
		Telephone jack	S
		Systems Control Center	S
		Smoke, LPG and carbon monoxide detectors	S
		Fire extinguisher	S
		Passenger seat belts in select areas	S
		Central vacuum system	O
		Slide-out battery tray	S
		Black tank flush system	S
		Convenience package includes keyless entry and valve stem extenders	O
		ELECTRICAL AND PLUMBING	
		Onan® Quiet 6.0 diesel generator (6000-KW)	S
		50-amp service with marine type detachable power cord	S
		Battery disconnect switch	S
		Emergency start switch	S
		Automatic shoreline-to-generator transfer switch	S
		600-watt inverter	O
		Dual auxiliary house battery	S
		10-gallon DSI gas/electric water heater	S
		Water heater bypass system	S
		Heated and enclosed holding tanks	S



VEHICLE LOADING: Every effort has been made to provide the greatest number of options for the recreation vehicle owner. Along with these choices comes the responsibility to manage the loads that are imposed by the choices so that they remain within the manufacturer's specified chassis weight limits. Do not overload the recreation vehicle.

IMPORTANT: Towing capacity may vary by chassis model, floorplan, options and loading of the vehicle. This may result in a towing capacity which is less than the maximum capacity of the hitch. Do not exceed the vehicle's Gross

Combined Weight Rating (GCWR), or the hitch rating. A separate functioning brake system is required for any towed vehicle or trailer weighing more than 1,000 lbs. (450 KG) when fully loaded. Liquid capacities and weights are approximations only.

WARNING: This information is intended as a guide only. Weights of individual vehicles may vary. Consult your owner's manual and weight sticker affixed to each vehicle for complete loading, weighing, and towing instructions. Actual filled LP capacity is 80% of listing due to safety shut-off required on tank.

WARRANTY: This vehicle is provided with a one-year, 15,000-mile limited warranty and a three-year, 45,000-mile limited structural warranty. Chassis, component part and appliance manufacturers issue limited warranties covering those portions of the vehicle not covered by the limited warranties issued by Four Winds International. To learn what portions of the vehicle are excluded from coverage under the limited warranties issued by Four Winds International, please contact your selling dealership or Four Winds International directly, or review the warranty packet inside the vehicle.

Product information, specifications, and photography in this brochure were as accurate as possible at time of printing. Photographs may contain some features that are optional on your vehicle. Since we continually strive to improve our products, actual products may differ. The manufacturer reserves the right, at any time, to make changes in product design, materials, component specifications and pricing, without notice. All capacities are approximate and dimensions are nominal. Some features or options may be different or unavailable in Canada.