

SURVEYOR

Eco-Lite Edition

By Forest River

DISCOVER THE WORLD OUTSIDE



TRA Certified **GREEN** Capable Manufacturer
Surveyor has been certified as a **GREEN** Capable Manufacturer. TRA Certification's evaluation of their quality system, production process, material usage, recycling & environmental practices has earned them this distinction.



STRONG, DURABLE LAMINATED FIBERGLASS WITH ALL ALUMINUM CAGE CONSTRUCTION

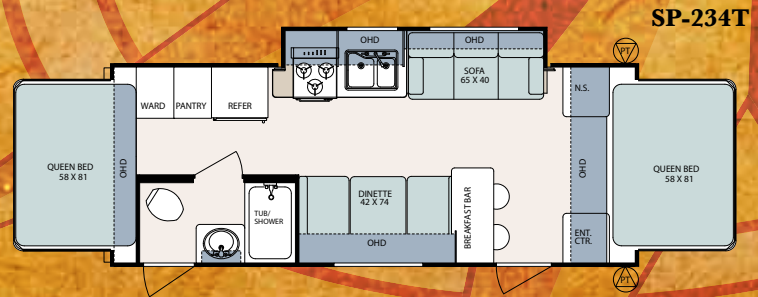
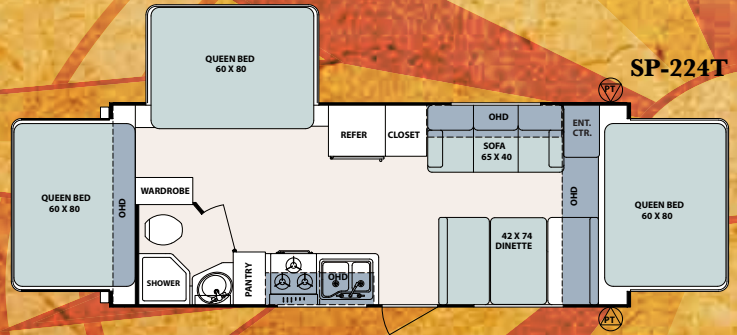
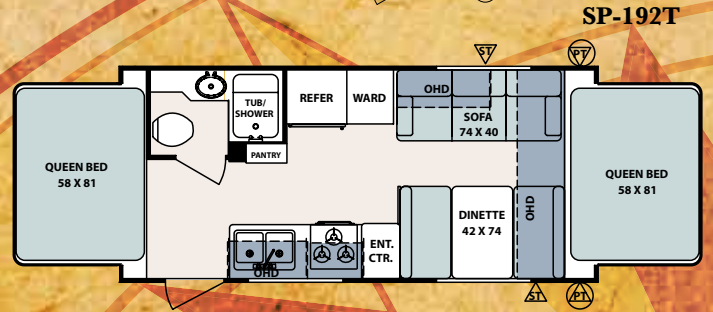
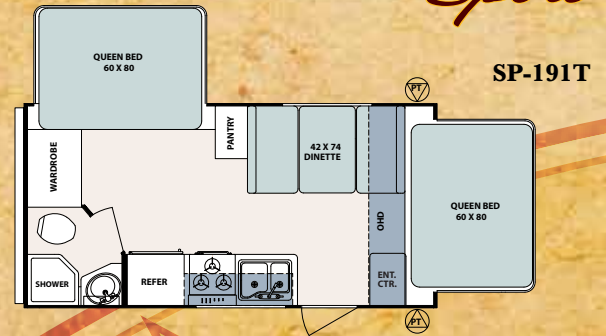
SURVEYOR

Eco-Lite Edition
By Forest River
Sport

SP-293-Earth Interior

SP-293-Earth Interior

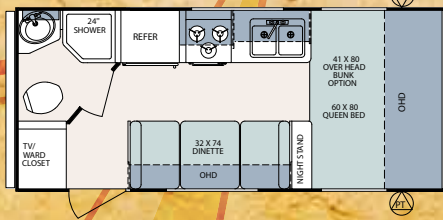
SP-295 Outside Kitchen With STD Table and Grill



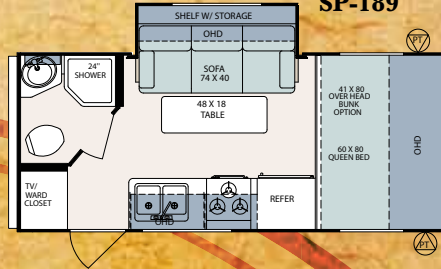
	SP-186	SP-189	SP-191T	SP-192T	SP-224T	SP-230	SP-234T	SP-275	SP-280	SP-293	SP-295
*TOTAL DRY WEIGHT	2685	2964	TBD	3237	TBD	3429	3836	3985	4142	4587	5034
LOAD CAPACITY	2176	1964	TBD	3788	TBD	1615	3194	3015	2899	2533	2423
HITCH WEIGHT	235	302	TBD	361	TBD	380	366	418	415	494	457
OVERALL LENGTH (Closed)	20'2"	20'6"	20'4"	21'11"	24'7"	25'7"	25'0"	28'9"	30'7"	33'0"	33'2"
OVERALL LENGTH (Open)	N/A	N/A	20'4"	24'9"	28'1"	N/A	27'9"	N/A	N/A	N/A	N/A
EXTERIOR WIDTH	7'0"	7'0"	8'0"	8'0"	8'0"	8'0"	8'0"	8'0"	8'0"	8'0"	8'0"
EXTERIOR HEIGHT (roof edge)	8'7"	8'7"	8'7"	8'7"	8'7"	8'7"	8'7"	8'7"	8'7"	8'8"	8'8"
FRESH WATER (gal.)	36	36	36	36	36	36	36	36	36	36	36
GREY WATER (gal.)	30	30	30	30	30	30	30	30	30	30	30
BLACK WATER (gal.)	30	30	30	30	30	30	30	30	30	30	30
TIRE SIZE: 205/75/R14	STD	STD	STD	STD	STD	STD	STD	STD	STD	STD	STD

SPORT TRAILERS

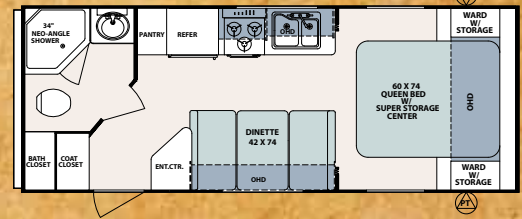
SP-186



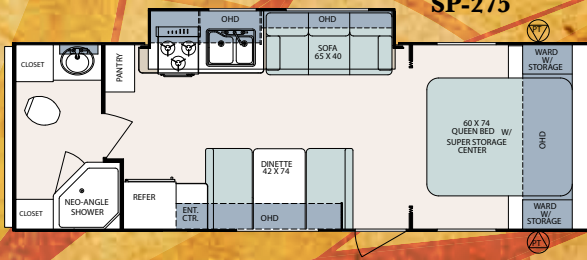
SP-189



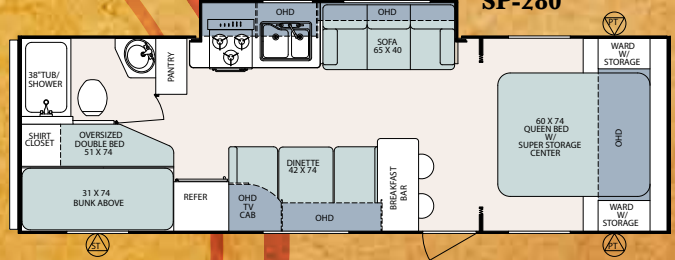
SP-230



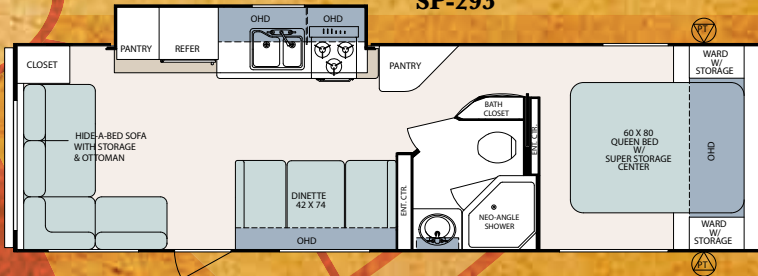
SP-275



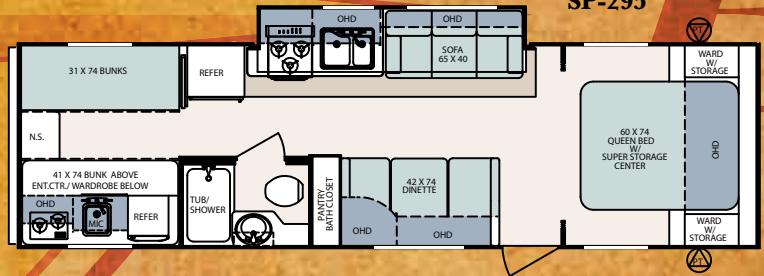
SP-280



SP-293



SP-295



ST=Storage PT= Pass Thru Storage

SURVEYOR SPORT ADVANTAGES

- Aluminum framing around all openings
- Full walk on roof
- 30 lb. LP bottles w/ cover
- 4" square bumper
- Tinted safety glass
- 78" interior height
- Double steps
- Detachable power cord
- 80 lb. gas struts (queen bed)
- Wood medicine cabinet
- 55 amp power converter
- Wood kitchen drawers w/ metal glides
- Spring loaded recessed hidden hinges
- Raised panel cabinet doors (uppers & lowers)
- Skylight in tub/shower

Surveyor Sport combines luxury and affordability for today's family. Surveyor interiors include upgrades throughout to make your travels more like home. You will enjoy large galleys, spacious cabinetry, and plush durable furniture.



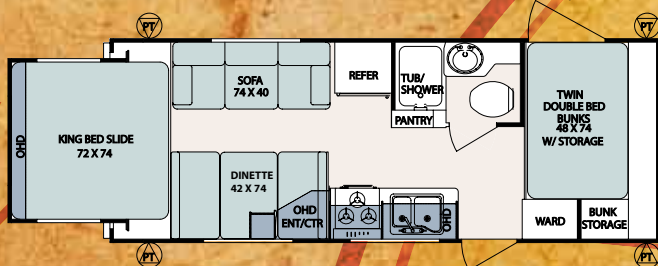
SP-295-Saffron Interior



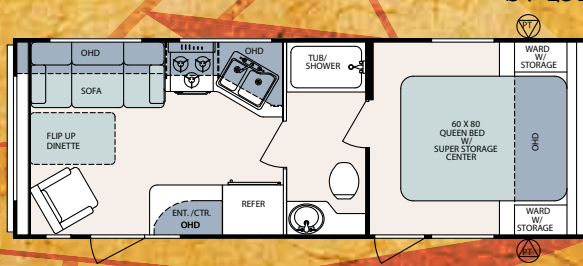
THE TRAILER MOST TRAVELED

Surveyor's aerodynamic exterior design, streamlined front end, lower center of gravity, independent torsion axles and enclosed underbelly, substantially reduces air turbulence and increases stability during travel.

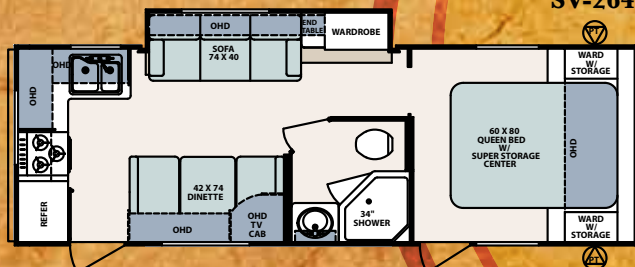
SV-235RKS



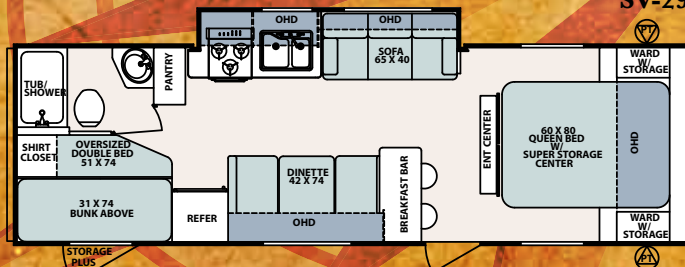
SV-251



SV-264



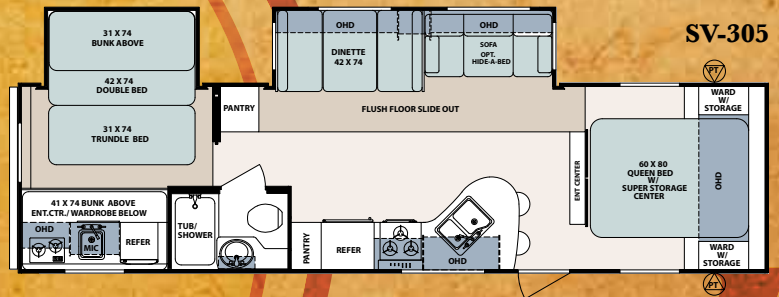
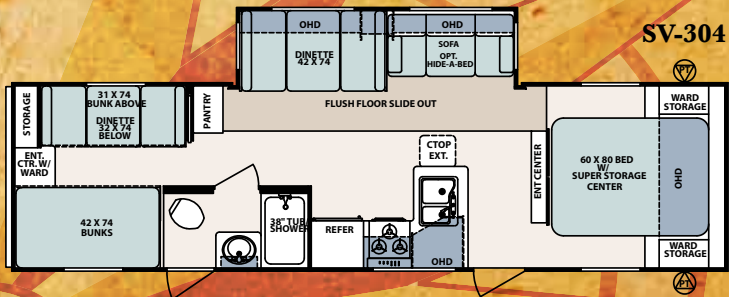
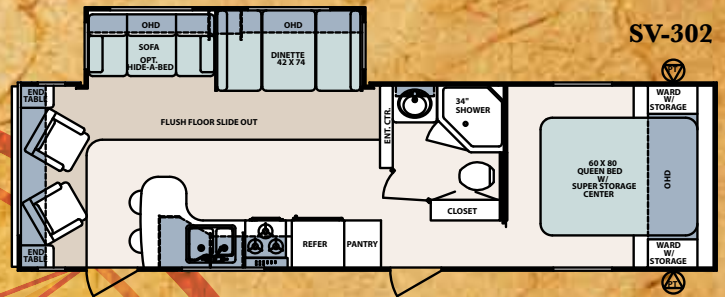
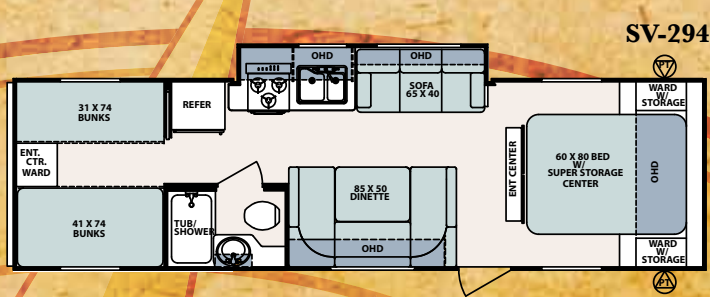
SV-291



	SV-235RKS	SV-251	SV-264	SV-291	SV-294	SV-302	SV-304	SV-305
*TOTAL DRY WEIGHT	4064	3760	4308	4423	4673	5821	5933	6522
LOAD CAPACITY	2939	1215	2698	2587	2399	3000	3000	3000
HITCH WEIGHT	476	450	481	440	547	709	777	708
OVERALL LENGTH (closed)	25'8"	27'1"	29'0"	31'0"	33'0"	33'7"	34'3"	35'7"
OVERALL LENGTH (open)	29'8"	N/A	N/A	N/A	N/A	N/A	N/A	N/A
EXTERIOR WIDTH	8'0"	8'0"	8'0"	8'0"	8'0"	8'0"	8'0"	8'0"
EXTERIOR HEIGHT (roof edge)	8'6"	8'8"	8'8"	8'8"	8'8"	9'6"	9'6"	9'6"
FRESH WATER (gal.)	36	36	36	36	36	36	36	36
GREY WATER (gal.)	30	30	60	30	30	30	30	30
BLACK WATER (gal.)	30	30	30	30	30	30	30	30
TIRE SIZE: 205/75/R14C	STD	STD	STD	STD	STD	N/A	N/A	N/A
TIRE SIZE: 225/75/R15D	N/A	N/A	N/A	N/A	N/A	STD	STD	STD

SURVEYOR

Eco-Lite Edition By Forest River



ST=Storage PT= Pass Thru Storage

Luxury is well within your reach in this extraordinary Surveyor travel trailer. Beautiful residential style cabinetry and kitchen, raised panel cabinet doors, spacious pantry, plus the large entertainment center makes this a great choice for affordable elegance.



SV302-Cinnamon Interior

SURVEYOR STANDARDS

APPLIANCES/EQUIPMENT

- Color-coded water lines
- Copper gas lines, double flared
- Dometic, flush-mount refrigerator
- Deep double-bowl kitchen sink w/ high rise faucet
- Power range hood w/ light
- Six gallon gas/electric DSI water heater (DSI optional Sport models)
- Three burner range top
- 20,000 BTU furnace (ducted 23 - 26)
- 30,000 BTU ducted furnace (27 and above)

BATH

- Fiberglass tub/shower
- Adjustable shower head/faucet
- Lavatory sink and faucet
- Wood medicine cabinet w/ mirror
- Shower curtain with tieback
- Thetford commode with foot flush
- Skylight in tub/shower
- Monitor panel

CONSTRUCTION

- Welded, aluminum framed, laminated roof w/ 3" block foam insulation (R14) & ducted A/C (25' and above travel trailers, N/A SP275 & SP280)
- Welded, aluminum framed, laminated roof w/ 1-1/2" block foam insulation (R9) (24' and below travel trailers, SP275 & SP280)
- Welded, aluminum cage constructed, laminated 2" wall w/ 1-1/2" block foam insulation (R9)
- Welded, aluminum framed, laminated floor w/ 1-1/2" block foam insulation (R9)
- Electric powered slide-out mechanism
- Electric powered rear slide-out mechanism w/ 1000# capacity

ELECTRICAL

- Detachable 28', 30-amp power cord
- 55 amp converter with charger
- Exterior 120 volt recept
- Patio light with amber lens
- 12-volt interior lighting
- 120-volt GFI protected circuit safety

EXPANDABLE BEDS

- Vinyl weathershield tent(s)
- Automotive rubber gasket and compression latches
- Decorative bunk cushions
- Radius door w/ hinge
- 1000 lb. capacity

SAFETY

- Breakaway switch
- Fire extinguisher
- LP detector
- Smoke detector
- Ground fault protected electrical circuit(s)
- Dead-bolt door lock
- Safety chains
- Multiple egress windows
- CO₂ detector
- Tinted safety glass

EXTERIOR

- Rubber roof w/ 12 year warranty
- Lamilux super 1000 fiberglass skin w/ 2 year warranty
- Radius corner windows
- Butyl tape sealant on seams
- Combination entrance/screen door w/dead-bolt lock
- Outside storage compartment(s) w/ rubber D-seal
- Self-storing double step(s)
- Designer exterior graphics
- 30# LP tanks
- Heated enclosed underbelly 23' & above (N/A Sport)
- Drip rails and down spout

INTERIOR

- Knife block behind stove
- Panoramic galley window
- Valances with mini-blinds
- No-wax seamless vinyl flooring
- Solid lumber core cabinet fronts assembled w/ screws
- Residential style cabinet doors w/ concealed hinges
- Reversible dinette and bunk cushions
- Power range hood with light
- Residential style wood drawers w/ metal glides
- In-floor heat ducts 23' & above (N/A Sport)
- 78" interior height
- Decorative oval wall clock (N/A Sport)
- 80# gas bed struts (queen beds)
- Adjustable shelves in pantry (where applicable)
- Message center w/ key hooks (N/A Sport)

PLUMBING

- Rotocast holding tanks, underfloor
- Rotocast fresh water tank, underfloor
- Demand waterpump, 12-volt
- City water fill
- Gravity water fill
- Water heater bypass kit
- Winterization kit

RUNNING GEAR

- Super-lube hubs
- Galvanized steel wheel wells
- Independent torsion suspension system (leaf springs sport models)
- Radial trailer tires
- Electric brakes, all wheels
- Tough, powder coated frame
- 2-5/16" coupler



SURVEYOR

COMPETITION



SURVEYOR SIDEWALL

Your Surveyor is constructed with 1.5" tubular aluminum framing in "all" openings. Is this necessary - we think so! Aluminum framed openings add strength and integrity to every Surveyor sidewall. No other lightweight trailer compares.

SURVEYOR ADVANTAGES

- Aluminum framing around all openings
- 2" thick sidewalls
- Independent torsion axles
- Heated and enclosed underbelly
- Full walk on roof
- 78" interior height
- Gas/electric DSI water heater
- 30 lb. LP bottles w/ cover
- 4" square bumper
- Water filtration system
- Fantastic fan
- Detachable power cord
- 60" x 80" queen beds
- Tinted safety glass
- Outside shower

FOREST RIVER ENCOURAGES YOU TO BUY LOCALLY

Forest River, Inc. strongly encourages our retail customers to purchase from their local dealership whenever possible due to the following factors:

- Our Dealers are, as a rule, independently owned and operated businesses. Outside of those customers they personally sold products to, they are not contractually obligated to perform warranty service on Forest River products that were purchased elsewhere. There may be an occasion that you would be required to return to the point of purchase to satisfy warranty requirements.
- Although many dealerships will eventually service products not purchased at their place of business, they will usually take care of their customers and other Forest River customers who are traveling away from their local dealer as they would their own.
- Local purchases allow a customer to establish a relationship with a dealer close to home. This relationship provides the customer with a convenient location for service and support from a "home town" professional.
- The opportunity for a thorough PDI (Pre Delivery Inspection) and product orientation is an additional benefit of buying from your local dealer. Further providing the opportunity for refresher courses or the ability to get questions answered much more conveniently.
- For our Canadian customers, there are also requirements which must be met to bring an RV purchased out of the country to their home. Although not insurmountable, these requirements may involve such things as additional inspections and certifications, taxes and fees. Your local Canadian Dealer is a professional at meeting these requirements.
- Forest River's goal is for all RV owners to fully enjoy their RV experience. In light of this goal, and considering the advantages of buying local, we encourage you to be thorough when determining what product to purchase and which dealer to purchase it from as both are key to your ultimate satisfaction and the realization of your dreams.

SURVEYOR OPTIONS

OPTIONS: APPROXIMATE WEIGHT

Air conditioner, 15,000 BTU IP0 13,500	2 lbs
Gas oven (Sport)	38 lbs
Outside stereo speakers (2)	5 lbs
26" flat screen TV	26 lbs
19" flat screen TV	15 lbs
Outside grill	15 lbs
Raised panel refrigerator door inserts	18 lbs
Axle riser (select models, N/A Sport)	10 lbs
Day/night shades	0 lbs
Aluminum spoked rims	0 lbs
Hide-a-bed sofa (select models)	35 lbs
Free standing dinette w/4 chairs (flush floor slides)	0 lbs
Power tongue jack	10 lbs
Roof ladder (N/A -exp. & rear slide-out models)	15 lbs
Slide-out awning topper	35 lbs
41" folding bunk bed (SP-186 & SP-189)	129 lbs
Exterior assist grab handle	2 lbs
Gas/electric water heater	2 lbs

SURVEYOR TRAVEL TRAILER OPTIONS

Interior Luxury Package: Approx. wt. 208 lbs
Stove cover, CD-DVD stereo w/remote control & 4 speakers, water filtration system, 3 speed Fantastic Fan, 6 gallon G/E DSI water heater, gas oven, sink covers (2), tub surround, microwave, double door refrigerator

Exterior Luxury Package: Approx. wt. 267 lbs
A&E awning, 13,500 BTU air conditioner, battery box, 30# LP bottles w/cover, spare tire/carrier & cover, outside shower, stabilizer jacks, TV antenna w/cable-satellite hookup

SURVEYOR COLORS



Cinnamon



Earth



Saffron

FOREST RIVER ADVANTAGE

- Fantastic fan in bath
- Water filtration system (entire unit) (N/A Sport models)

GENERAL WARRANTY INFORMATION

Warranty - Among the best in the industry.
See your local Surveyor dealer for details

SURVEYOR SPORT OPTIONS

Interior Luxury Package: Approx. wt. 90 lbs
C/D-DVD stereo w/ 2 speakers, 6 gallon G/E water heater, tub surround, 3 burner cooktop, microwave and double door refrigerator.

Exterior Luxury Package: Approx. wt. 246 lbs
A & E awning, 13,500 BTU air conditioner, 30 # LP bottles w/ cover, spare tire/carrier and cover, stabilizer jacks, TV antenna w/ cable-satellite hookup, and double step

You'll be impressed with the spaciousness of the Surveyor bath, complimented with a large lavatory sink, wood medicine cabinet, foot flush toilet, and skylight for natural lighting.



SURVEYOR TOWING

The tow ratings listed below are the highest available for the respective models listed. Certain optional equipment may be required and other restrictions may apply. See your automotive dealer for more information.

	Engine	Max		Engine	Max		Engine	Max
ACURA			Explorer (2WD)	4.6L V-8	7,310	ML 350	3.2LV6	5,000
MDX	3.5L V-6	5,000	Explorer (4WD)	4.6L V-8	7,130	ML 500	V-8	5,000
AM GENERAL			Sport Trac (2WD)	4.6L V-8	7,160	MINI		
H1 4 dr Open Top	6.6LTD	9,303	Sport Trac (4WD)	4.6L V-8	7,000	Cooper	3.0L V-6	3,500
H1 4 dr Wagon	6.6LTD	9,036	F-150 Reg. Cab (2WD)	5.4L V-8	8,500	NISSAN		
H2	6.0LV-8	6,700	F-150 Reg. Cab (4WD)	5.4L V-8	8,200	Armada (2WD)	5.6L V-8	9,100
H2 SUT	6.0LV-8	6,600	F-150 Super Crew (2WD)	5.4L V-8	9,500	Armada (4WD)	5.6L V-8	9,000
H3	3.5LI-5	4,500	F-150 Super Crew (4WD)	5.4L V-8	9,200	Frontier KC XE (2WD)	2.5L I-4	3,500
H3	3.7L I-5	4,500	Ranger Reg. Cab 7' Bed (2WD)	4.0L V-6	6,000	Frontier KC SE, LE NISMO (2WD)	4.0L V-6	6,500
H3 Alpha	5.3L V-8	6,000	Ranger Reg. Cab 7' Bed (4WD)	4.0L V-6	5,680	Frontier KC SE, LE NISMO (4WD)	4.0L V-6	6,300
BMW			HONDA			Murano	3.5L V-6	3,500
X3 3.0si	3.0L I-6	3,500	Odyssey	3.5L V-6	3,500	Pathfinder	4.0L V-6	6,000
X5 3.0si	3.0L I-6	6,000	Pilot	3.5L V-6	4,300	Pathfinder	5.6L V-8	7,000
X5 4.8Li	4.8L V-8	6,000	Ridgeline	3.5L V-6	5,000	Quest	3.5L V-6	3,500
BUICK			HYUNDAI			Titan KC 2WD	5.6L V-8	9,500
Rendezvous	All	3,500	Entourage	3.8L V-6	3,500	Titan KC 4WD	5.6L V-8	9,400
Terraza	3.9L V-6	3,500	Veracruz (all)	3.8L V-6	3,500	Titan CC 2WD	5.6L V-8	9,400
Rainier (2WD)	4.2L I-6	5,800	INFINITI			Titan CC 4WD	5.6L V-8	9,400
Rainier (2WD)	5.3L V-8	6,700	QX56 (AWD)	5.6L V-8	8,900	Titan Longbed CC (2WD)	5.6L V-8	9,300
Rainier AWD	4.2L I-6	5,600	QX56 (2WD)	5.6L V-8	9,000	Titan Longbed CC (4WD)	5.6L V-8	9,100
Rainier AWD	5.3L V-8	6,600	FX	All	3,500	Xterra	4.0L V-6	5,000
Enclave	3.6L V-6	4,500	ISUZU			PONTIAC		
CADILLAC			Ascender (2WD)	4.2L I-6	5,300	Torrent	3.4L V-6	3,500
Escalade 2WD	6.2L V-8	8,000	Ascender (4WD)	4.2L I-6	5,200	PORSCHE		
Escalade AWD	6.2L V-8	7,900	i290 Ext Cab (2WD)	2.9L I-4	3,200	Cayenne	All	7,716
Escalade ESV	6.2L V-8	7,400	i370 Ext Cab (2WD)	3.7L I-5	5,500	SAAB		
Escalade EXT	6.2L V-8	7,400	JEEP			9-3 (ALL)	All	3,500
SRX	3.6L V-6	4,250	Commander (2WD)	4.7L V-8	6,500	9-5 (ALL)	All	3,500
SRX	4.6L V-8	4,250	Commander (4WD)	4.7L V-8	6,500	9-7X	4.2L I-6	5,600
CHEVROLET/GMC			Grand Cherokee (2WD)	4.7L V-8	6,500	9-7X	5.3L V-8	6,500
Acadia	3.6L V-6	4,500	Grand Cherokee (4WD)	4.7L V-8	6,500	SATURN		
Avalanche 1500 (2WD)	5.3L V-8	8,200	Grand Cherokee (4WD)	4.7L V-8	6,500	Outlook	3.6L V-6	4,500
Avalanche 1500 (4WD)	5.3L V-8	7,900	Grand Cherokee (2WD)	5.7L V-8	7,400	Vue XE	3.5L V-6	3,500
Colorado Ext. Cab (2WD)	5.3L V-8	4,000	Grand Cherokee (4WD)	5.7L V-8	7,200	Vue XR/Red Line	3.6L V-6	3,500
Colorado Ext. Cab (4WD)	5.3L V-8	6,000	Liberty (2WD)	3.7L V-6	3,500	SUBARU		
Equinox	All	3,500	Liberty (4WD)	3.7L V-6	3,500	B9 Tribeca	3.6L H-6	3,500
Express/Savana 1500 SWB	4.3L V-6	4,400	Wrangler Unlimited	3.8L V-6	3,500	Outback	3.0L H-6	3,000
Express/Savana 1500 SWB	5.3L V-8	6,700	Wrangler Unlimited Rubicon	3.8L V-6	3,500	SUZUKI		
Silverado/Sierra 1500 Reg. Cab (2WD)	5.3L		KIA			Grand Vitara	2.7L V-6	3,000
V-8	8,200		Sorento	3.3L V-6	3,500	XL7	3.6L V-6	3,500
Silverado/Sierra 1500 Reg. Cab (4WD)	5.3L		Sorento	3.8L V-6	5,000	TOYOTA		
V-8	7,900		Sedona	3.8L V-6	3,500	4Runner (2WD)	4.0L V-6	5,000
Silverado/Sierra 1500 CC (2WD)	5.3L V-8	7,600	LAND ROVER			4Runner (4WD)	4.0L V-6	5,000
Silverado/Sierra 1500 CC (4WD)	5.3L V-8	7,500	Land Rover LR2	3.2L I-6	3,500	4Runner (2WD)	4.7L V-8	7,300
Tahoe/Yukon (2WD)	5.3L V-8	7,500	Land Rover LR3	4.4L V-8	7,716	4Runner (4WD)	4.7L V-8	7,000
Tahoe/Yukon (4WD)	5.3L V-8	7,200	Range Rover	4.4L V-8	7,716	FJ Cruiser	4.0L V-6	5,000
Yukon 2WD Hybrid	6.0L V-8	6,200	Range Rover Sport	4.2L V-8 SC	7,716	Highlander	3.5L V-6	3,500 (t)
Suburban/Yukon XL (2WD)	5.3L V-8	7,100	LEXUS			Highlander Hybrid	3.3L V-6	3,500
Suburban/Yukon XL (4WD)	5.3L V-8	7,000	RX 350	3.5L V-6	3,500	Land Cruiser	5.7L V-8	8,500
Trailblazer/Envoy (2WD)	5.3L V-8	6,800	RX 400 (HYBRID)	3.3L V-6	3,500	Sienna	3.5L V-6	3,500
Trailblazer/Envoy (4WD)	5.3L V-8	6,600	GX 470	4.7L V-8	6,500	Sequoia (2WD)	4.7L V-8	6,500
CHRYSLER/DODGE			LX 570	5.7L V-8	8,500	Sequoia (4WD)	4.7L V-8	6,200
Aspen Limited (2WD)	4.7L V-8	5,950	LINCOLN/MERCURY			Tacoma Reg Cab	2.7L I-4	3,500
Aspen Limited (4WD)	4.7L V-8	5,750	Mariner			Tacoma Access Cab/ Xrunner	2.7L I-4	3,500
Dakota Ext. Cab (2WD)	3.7L V-6	4,850	Mountaineer (2WD) 5 PSGR	4.0L V-6	5,295	Tacoma Access Cab (2WD/4WD)	4.0L V-6	5,000
Dakota Ext. Cab (4WD)	3.7L V-6	4,650	Mountaineer (AWD) 5 PSGR	4.0 L V-6	5,000	Tacoma Dbl Cab (2WD/4WD)	4.0L V-6	5,000
Dakota CC (2WD)	3.7L V-6	4,750	Mountaineer (2WD) 7 PSGR	4.6L V-8	7,135	Tundra Reg Cab SB	4.7L V-8	5,100
Dakota CC (4WD)	3.7L V-6	4,600	Mountaineer (AWD) 7 PSGR	4.6L V-8	6,970	Tundra Reg Cab LB	4.7L V-8	5,000
Durango (2WD)	4.7L V-8	6,050	MAZDA			Tundra Double Cab SB (2WD)	4.7L V-8	7,000
Durango (4WD)	4.7L V-8	5,900	OUTLANDER (4WD)	3.0L V-6	3,500	Tundra Double Cab LB (2WD)	4.7L V-8	6,900
Durango (2WD)	5.7L V-8	7,400	ENDEAVOR	3.8L V-6	3,500	Tundra Double Cab SB (4WD)	4.7L V-8	6,700
Durango (4WD)	5.7L V-8	7,200	RAIDER EXT CAB (2WD)	3.7L V-6	4,150	Tundra Double Cab LB (4WD)	4.7L V-8	6,600
Grand Caravan	3.8L V-6	3,600	RAIDER EXT CAB (2WD)	4.7L V-8	6,450	Tundra Reg Cab (2WD)	5.7L V-8	10,800
Ram 1500 Reg. Cab (2WD)	5.7L V-8	9,100	RAIDER DBL CAB (2WD)	3.7L V-6	4,050	Tundra Reg Cab (4WD)	5.7L V-8	10,500
Ram 1500 Reg. Cab (4WD)	5.7L V-8	8,900	RAIDER DBL CAB (2WD)	4.7L V-8	6,350	Tundra Double Cab (2WD)	5.7L V-8	10,600
Ram 1500 QC (2WD)	5.7L V-8	8,750	RAIDER DBL CAB (4WD)	3.7L V-6	3,950	Tundra Double Cab (4WD)	5.7L V-8	10,300
Ram 1500 QC (4WD)	5.7L V-8	8,500	RAIDER EXT CAB (4WD)	4.7L V-8	5,250	Tundra Crewmax (2WD)	5.7L V-8	10,400
Town and Country	3.8L V-6	3,600	RAIDER DBL CAB (4WD)	3.7L V-6	4,150	Tundra Crewmax (4WD)	5.7L V-8	10,100
FORD			MERCEDES-BENZ			VOLKSWAGEN		
E-150 Van	4.6L V-8	6,500	G500	V-8	7,000	Touareg (4WD)	All	7,716
E-150 Van	5.4L V-8	7,500	G55 AMG	V-8	7,000	VOLVO		
Edge	3.5L V-6	3,500				XC 90	All	5,000
Escape	3.0L V-6	3,500						
Expedition (2WD)	5.4L V-8	9,200						
Expedition (4WD)	5.4L V-8	9,000						

SURVEYOR
The Data Solution



Forest River Inc., 2405 Century Drive Goshen, IN 46528
www.forestriverinc.com, www.forestriveraccessories.com
Ph. 574.642.3119

As Surveyor constantly strives to improve our product, all specifications listed in this informative brochure are subject to change without notice or obligation. Photos may show optional equipment which is not included in the purchase price of the unit. Review a current model on your dealer's lot today. PIP 041808