

# Surveyor

10<sup>th</sup>  
Anniversary  
Edition

DISCOVER THE WORLD OUTSIDE

DISCOVER THE WORLD OUTSIDE



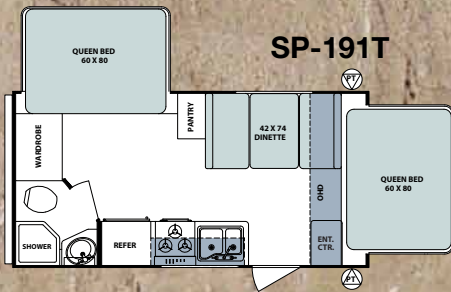
STRONG, DURABLE LAMINATED FIBERGLASS WITH ALUMINUM CAGE CONSTRUCTION



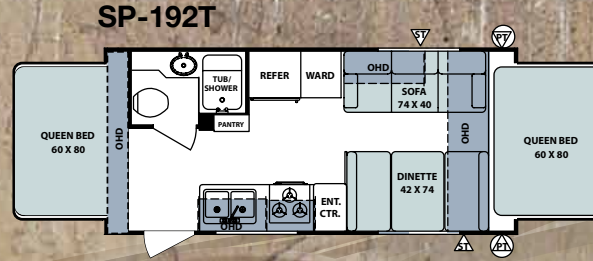
# SURVEYOR SPORT

## FLOORPLANS AND SPECIFICATIONS

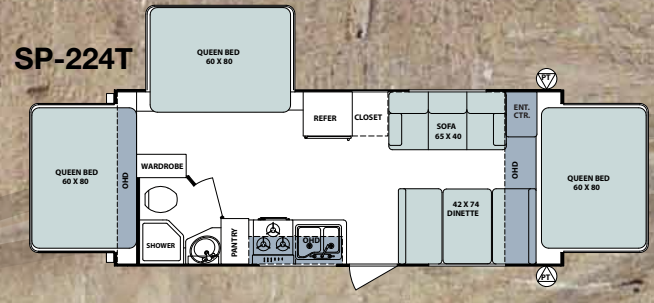
ST=Storage PT= Pass Thru Storage OHD= Overhead Cabinet



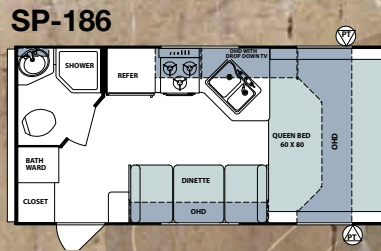
SP-191T



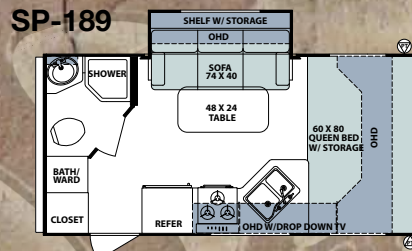
SP-192T



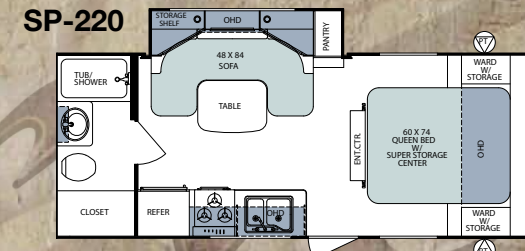
SP-224T



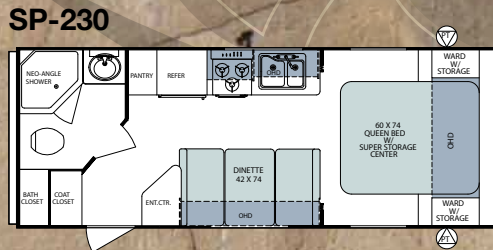
SP-186



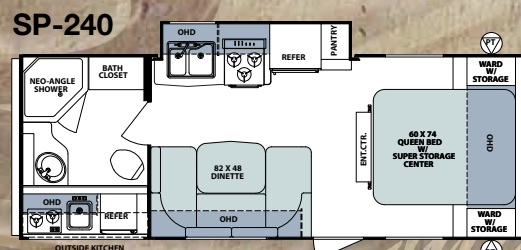
SP-189



SP-220



SP-230



SP-240

*Surveyor Sport*

MODEL	SP-191T	SP-192T	SP-224T	SP-186	SP-189	SP-220	SP-230	SP-240	SP-260	SP-275	SP-280	SP-293	SP-295
*TOTAL DRY WEIGHT	3045	3422	3650	TBD	3288	3804	3555	4167	4141	3985	4361	4706	4949
LOAD CAPACITY	1464	3596	3444	TBD	1723	3252	3474	2969	2959	3015	2794	2485	2262
HITCH WEIGHT	478	387	463	TBD	380	425	398	505	469	418	524	560	580
OVERALL LENGTH	20'4"	21'11"	24'7"	TBD	21'2"	24'8"	25'7"	26'6"	28'0"	28'9"	30'7"	33'0"	33'2"
EXTERIOR WIDTH	8'0"	8'0"	8'0"	8'0"	8'0"	8'0"	8'0"	8'0"	8'0"	8'0"	8'0"	8'0"	8'0"
EXTERIOR HEIGHT	8'10"	8'10"	8'10"	8'10"	8'10"	8'10"	8'10"	8'10"	8'11"	8'11"	8'11"	8'11"	8'11"
FRESH WATER (gal.)	36	36	36	36	36	36	36	36	36	36	36	36	36
GREY WATER (gal.)	30	30	30	30	30	30	30	30	30	30	30	30	30
BLACK WATER (gal.)	30	30	30	30	30	30	30	30	30	30	30	30	30
AWNING SIZE	12'	10'	13'	11'	12'	15'	17'	13'	16'	20'	18'	20'	18'

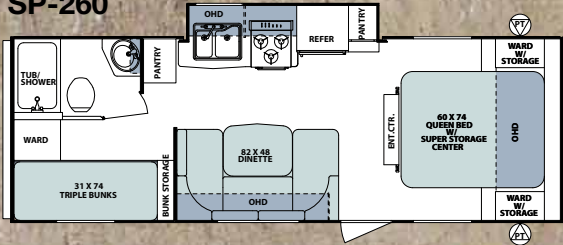
### EASY GOING

There's no need to give up space or amenities with the Surveyor Sport. Expandable sleeping areas (some models) provide for a spacious slumber while the lightweight design makes towing a breeze. Rich in features the Surveyor Sport is a smart choice for those who choose to travel well but light!

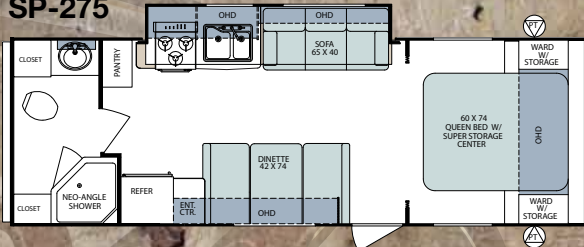


\*We know weights and dimensions are an important part of your buying decision. Surveyor weighs every model to ensure accuracy, although refinements to the product can create variations to weights and dimensions. Review a current model at your nearest authorized Surveyor Dealer today.

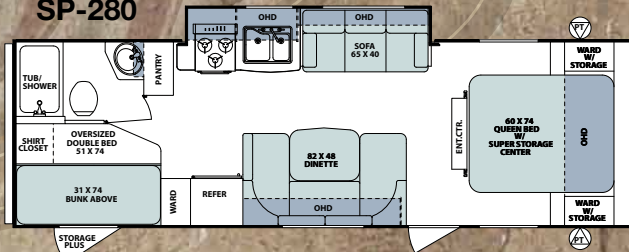
SP-260



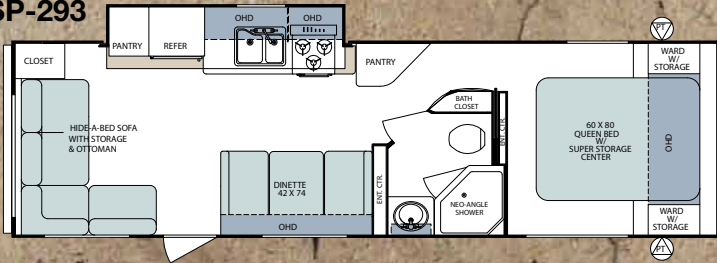
SP-275



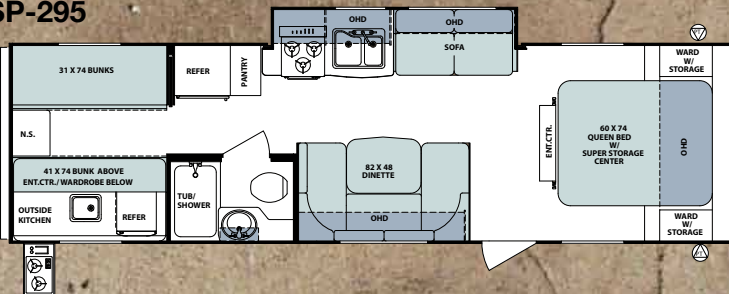
SP-280



SP-293



SP-295



### SURVEYOR SPORT

Surveyor Sport delivers affordable luxury combined with top-selling floorplans in a value-packed travel trailer built for the lighter weight towing needs of today's RVers.

SP-224T-HARVEST INTERIOR

SP-224T-HARVEST INTERIOR



# SURVEYOR SELECT



SV-301-TUSCANY INTERIOR



SV-301-TUSCANY INTERIOR

SV-301-BEDROOM/BATH

# Select

## SURVEYOR SELECT

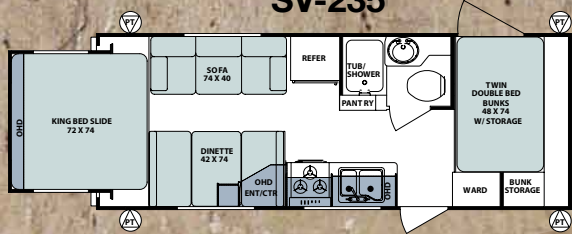
The Surveyor Select delivers the exclusive combination of comfort and functional performance you've been searching for. Offering you more standard safety features, like a torsion suspension system, and more unique design cues, like the all-new Vista Lounge, the Surveyor Select continues to capture the essence of satisfaction and value. The Surveyor Select. Light-weight by design, upgraded by demand.

# SURVEYOR SELECT

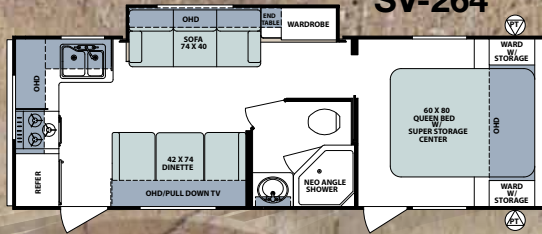
## FLOORPLANS AND SPECIFICATIONS

ST=Storage PT= Pass Thru Storage OHD= Overhead Cabinet

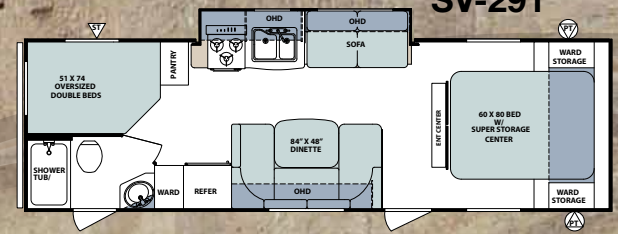
SV-235



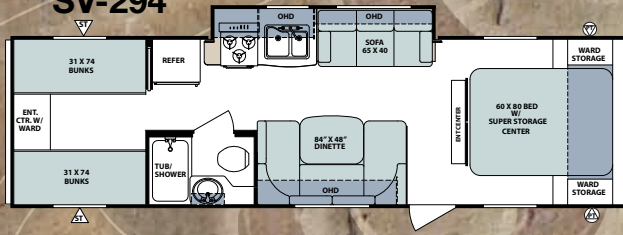
SV-264



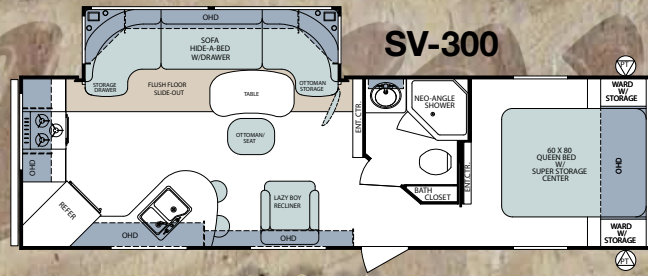
SV-291



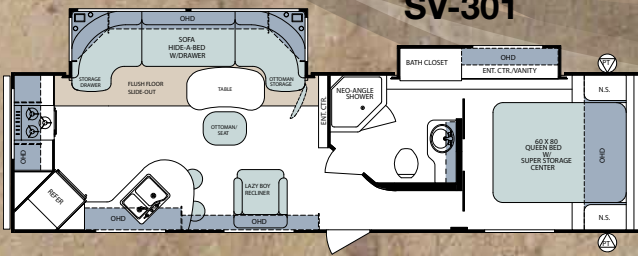
SV-294



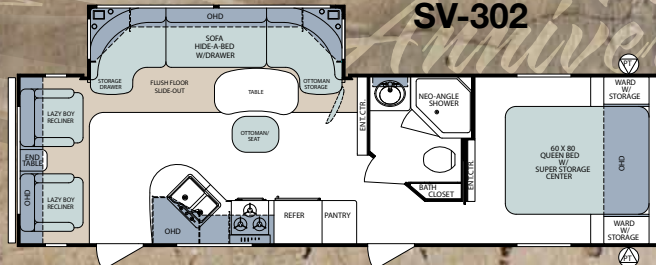
SV-300



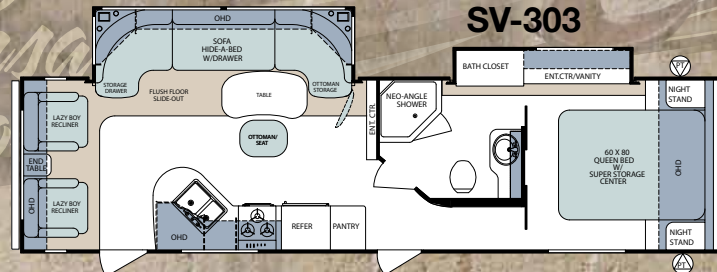
SV-301



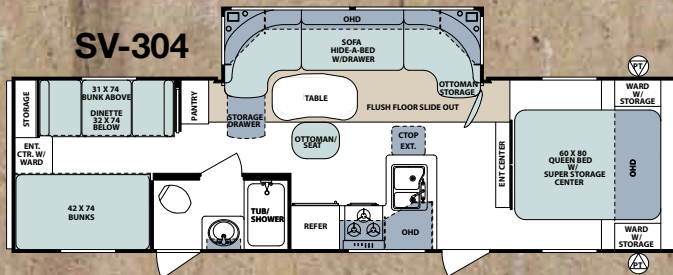
SV-302



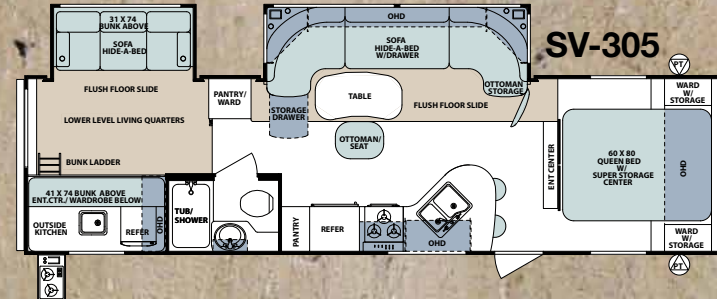
SV-303



SV-304



SV-305





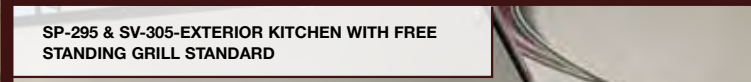
SV-305-ESPRESSO INTERIOR WITH VISTA LOUNGE



SV-305-ESPRESSO INTERIOR SUNKEN BUNK ROOM



SV-305-ESPRESSO INTERIOR WITH STANDARD AIR MATTRESS HIDE-A-BED



SP-295 & SV-305-EXTERIOR KITCHEN WITH FREE STANDING GRILL STANDARD

# Select

MODEL	SV-235	SV-264	SV-291	SV-294	SV-300	SV-301	SV-302	SV-303	SV-304	SV-305
*TOTAL DRY WEIGHT	4201	4536	TBD	4949	TBD	7058	6360	6991	6444	7364
LOAD CAPACITY	2772	2466	TBD	2153	TBD	3551	3989	3563	4087	3117
HITCH WEIGHT	481	510	TBD	610	TBD	957	697	902	879	829
OVERALL LENGTH (open)	25'10" (29'10")	29'0"	31'4"	33'2"	33'8"	35'7"	34'2"	36'0"	34'5"	35'7"
EXTERIOR WIDTH	8'0"	8'0"	8'0"	8'0"	8'0"	8'0"	8'0"	8'0"	8'0"	8'0"
EXTERIOR HEIGHT	8'9"	8'10"	8'10"	8'10"	9'8"	9'8"	9'8"	9'8"	9'8"	9'8"
FRESH WATER (gal.)	36	36	36	36	36	36	36	36	36	36
GREY WATER (gal.)	30	60	30	30	60	60	30	30	30	30
BLACK WATER (gal.)	30	30	30	30	30	30	30	30	30	30
AWNING SIZE	16'	20'	18'	20'	18'	20'	20'	20'	18'	20'

\*We know weights and dimensions are an important part of your buying decision. Surveyor weighs every model to ensure accuracy, although refinements to the product can create variations to weights and dimensions. Review a current model at your nearest authorized Surveyor Dealer today.



**POWER STABILIZER JACKS**  
Set up is a breeze with Surveyor Select's push button electric stabilizer jacks. (N/A Sports)



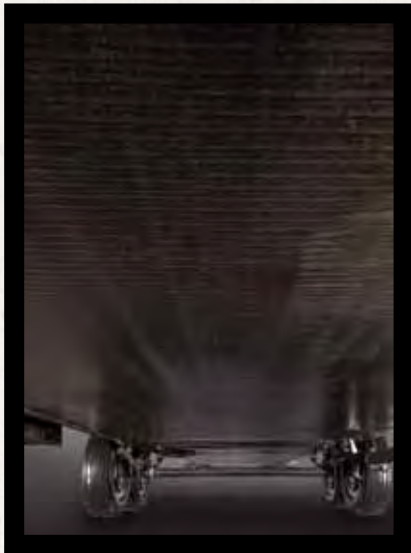
**FOLDING ASSIST HANDLE**  
This oversized assist handle allows for safe entry and exit from your coach.



**SUPERIOR CONSTRUCTION**  
Surveyor is one of the strongest light weight trailers because of our lamination process. High quality materials, 100% glue coverage and fully framed aluminum floor, roof, walls, fronts and backs provide you a structure for peace of mind.



**EXTERIOR SPEAKERS**  
Outside speakers let you listen to your favorite music or sport channel outside.



**HEATED AND ENCLOSED UNDERBELLY**  
Surveyor Select's aerodynamic underbelly is heated and enclosed. The entire underbelly is warmed by radiant heat from the heat duct allowing you to use the coach in colder weather environments. This unique construction method opens up storage space above the floor, while lowering the units' center of gravity for towing ease and stability. (Enclosed Only Sports)



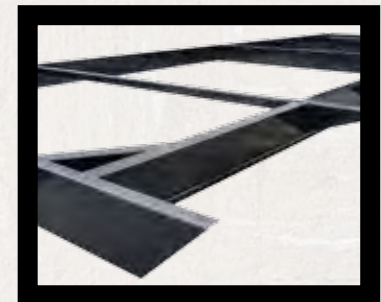
**POWER AWNING**  
Surveyor's push button electric awning with adjustable rain dump = 1 touch setup. No manual awnings here!



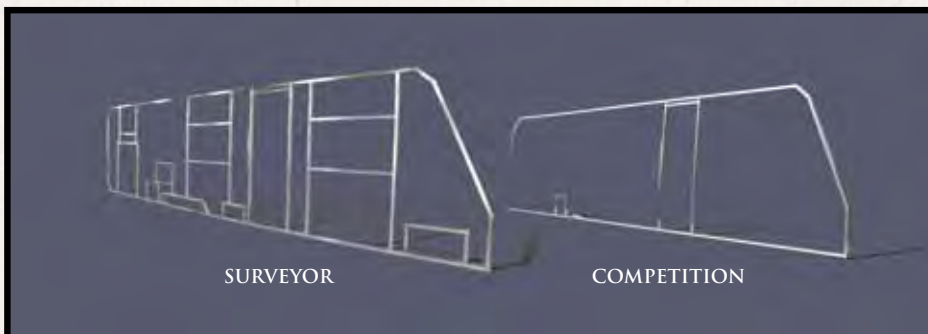
**BLACK TANK FLUSH**  
Tank clean out made simple with this standard and convenient feature.



**EXTERIOR SHOWER**  
Hot and cold controls make clean-up simple and easy.



**POWDER COATED FRAMES**  
Our all steel I-Beam frames provide you with the most superior foundation.



SURVEYOR

COMPETITION

**SURVEYOR SIDEWALL**  
Your Surveyor is constructed with tubular aluminum framing in "all" openings. Is this necessary - we think so! Aluminum framed openings add strength and integrity to every Surveyor sidewall. No other lightweight trailer compares.



# FEATURES



## SPOKED ALUMINUM RIMS

Designer black split spoke rims add a stylish look to the exterior of every Surveyor Travel Trailer!



## SLAM LATCH BAGGAGE DOORS

These bus style latches make opening and closing your baggage doors convenient and easy.



## DRIP RAIL AND DOWN SPOUT

Keep the exterior of your coach in pristine condition with this great feature, it keeps rain water from streaking the side of your coach.



## METAL DRAWER GLIDES

Ball bearing drawer glides allow you to access the whole drawer, and will provide you with years of trouble free service.



## SPACIOUS PANTRIES

Surveyor's unique use of adjustable shelves and residential recessed spring loaded hidden hinges offers you the freedom to store all your camping necessities.



## DAY/NITE SHADES (OPT.)

Designer styled valances and optional Day/Nite shades provide all the privacy you need.



## FANTASTIC FAN

Fantastic Fans are standard in all Surveyor Select baths. This 12" 10-blade bath fan significantly increases air circulation and the removal of condensation as compared to the industry's standard smaller bath vent. (N/A Sports)



## DOORS AND DRAWERS

Surveyor's solid wood doors and drawers are structurally superior inside - naturally beautiful outside. Genesis "ES" cabinet doors offer a 10 year limited warranty on the "Endura" panel doors.



## SERTA MATTRESS

Serta Dreamscape Mattress come standard on all Select Models. Stretch out and sleep in on this Forest River Exclusive. (Optional Sports)



## WATER FILTRATION

You'll appreciate the water filtration system that is standard with each Surveyor Select. This compact unit filters water for the entire coach, eliminating those unwanted contaminants and odors. Ensuring safe drinking water for you and your family. (N/A Sports)

# SURVEYOR STANDARDS AND OPTIONS

APPLIANCES/EQUIPMENT	SPORT	SELECT
Dometic, G/E Flush-Mount Refrigerator	X	X
Power Range Hood w/ Light	X	X
Six Gallon Gas/Electric DSI Water Heater w/ Quick Recovery	X	X
Three Burner Range Top	X	X
Gas Oven with Piezo Ignition	X	X
Microwave Oven	X	X
20,000 BTU Furnace (Ducted 23'-26')	X	X
30,000 BTU Ducted Furnace (27' and Above)	X	X
13.5K Air Conditioning (Ducted ALL MODELS)	X	X
Digital Wall Thermostat	X	X
Stereo CD/DVD with MP3/SD Card/USB Ports and Remote Control	X	X

BATH	SPORT	SELECT
Fiberglass Tub/Shower	X	X
Adjustable Shower Head/Faucet	X	X
Lavatory Sink and Faucet	X	X
Wood Medicine Cabinet w/ Mirror	X	X
Fantastic Fan	N/A	X
Shower Curtain with Tieback	X	X
Thetford Commode with Foot Flush	X	X
Skylight in Tub/Shower	X	X
Monitor Panel	X	X

CONSTRUCTION	SPORT	SELECT
Full Aluminum Cage Construction	X	X
Full Walk on Roof	X	X
Radius Roof w/ Aluminum Trusses 16" on Center	X	X
3/8" Decking	X	X
2" Laminated Sidewall (R9)	N/A	X
1-1/2" Laminated Sidewall (R7)	X	N/A
2" Laminated Floor (R9)	X	X
Electric Powered Slide-Out Mechanism w/ Manual Override	X	X
Electric Powered Rear Slide-Out Mechanism	N/A	X

ELECTRICAL	SPORT	SELECT
Detachable 28', 30-amp Power Cord	X	X
55 amp Converter with Charger	X	X
Exterior 120 volt Recept	X	X
Patio Light with Amber Lens	X	X
Hitch Light	X	X
Pass Thru Storage Light	X	X
12-volt Interior Lighting	X	X
120-volt GFI Protected Circuit Safety	X	X
Decorative Globe Light (some models)	N/A	X
Cable & Satellite Ready	X	X

EXPANDABLE BEDS	SPORT	SELECT
Attached Vinyl Weathershield Tent(s)	X	N/A
Automotive Rubber Gasket and Compression Latches	X	N/A
Decorative Bunk Cushions	X	N/A
Radius Door w/ Hinge	X	N/A
1,000# Capacity	X	N/A

SAFETY	SPORT	SELECT
Break-Away Switch	X	X
Fire Extinguisher	X	X
LP Detector	X	X
Smoke Detector	X	X
Ground Fault Protected Electrical Circuit(s)	X	X
Dead-Bolt Door Lock	X	X
Safety Chains	X	X
CO <sup>2</sup> Detector	X	X
Tinted Safety Glass	X	X

EXTERIOR	SPORT	SELECT
Super Flex Roof w/ 12 Year Warranty	X	X
Lamilux Super 4000 "Cool Vanilla" Gel coat Fiberglass Skin w/ 2 Year Warranty	N/A	X
Lamilux Super 1000 Fiberglass Skin w/ 2 Year Warranty	X	N/A
Radius Corner Windows	X	X

	SPORT	SELECT
Flush Mount Outside Storage Compartment(s) w/ Rubber D-Seal	X	X
Flush Mount "Slam Latch" Outside Storage Compartment(s) w/ Rubber D-Seal	N/A	X
Self-Storing Double Entrance Step(s)	X	X
Self-Storing Triple Entrance Steps (some models)	N/A	X
Butyl Tape Sealant on Seams	X	X
Combination Entrance/Screen Door w/ Dead-Bolt Lock	X	X
Designer Exterior Graphics	X	X
30# LP tanks w/ Molded Cover	X	X
Enclosed Underbelly	X	N/A
Heated Enclosed Underbelly	N/A	X
Drip Rail and Down Spout	X	X
Electric Awning w/ Adjustable Rain Dump	X	X
Power Stabilizer Jacks	N/A	X
Heavy Duty Scissor Jacks	X	N/A
Windstar <sup>®</sup> Omni-Directional TV Antenna	X	X
Dual Battery Rack	X	X
4" Square Bumper w/ Sewer Hose Storage	X	X
Outside Shower	X	X
Spare Tire w/ Carrier and Cover	X	X

INTERIOR	SPORT	SELECT
Deep Double-Bowl Kitchen Sink w/ High Rise Faucet	X	X
Knife Block Behind Stove	X	X
Panoramic Galley Window	X	X
Valances with Mini-Blinds	X	X
Designer Carefree <sup>®</sup> Flooring	X	X
Solid Lumber Core Cabinet Fronts Assembled w/ Screws	X	X
Residential Style Cabinet Doors w/ Concealed Hinges	X	X
Reversible Dinette Cushions	X	X
Power Range Hood with Light	X	X
Residential Style Wood Drawers w/ Ball Bearing Glides	X	X
In-Floor Heat Ducts	N/A	X
78" Interior Height	X	X
80# Gas Bed Struts (Queen Beds)	X	X
Adjustable Shelves in Pantry (Where Applicable)	X	X
Message Center w/ Key Hooks	N/A	X
E-Z Glide Dinette Table	X	X
Ceiling Light Switch at Entrance Door	X	X
60x80 Serta <sup>®</sup> Queen Beds	N/A	X
Screwed & Glued Cabinetry	X	X
Sink Covers	N/A	X
Stove Cover	N/A	X
Shaw <sup>®</sup> r2x Stain and Soil Resistant Carpet	N/A	X

PLUMBING	SPORT	SELECT
Black Tank Flush	X	X
Color-Coded Water Lines	X	X
Copper Gas Lines, Double Flared	X	X
Rotocast Holding Tanks, Underfloor	X	X
Rotocast Fresh Water Tank, Underfloor	X	X
Demand Waterpump, 12-volt	X	X
City Water Fill	X	X
Gravity Water Fill	X	X
Water Filtration System	N/A	X
Water Heater Bypass Kit	X	X
Winterization Kit	X	X

RUNNING GEAR	SPORT	SELECT
Super-Lube Hubs	X	X
Galvanized Steel Wheel Wells	X	X
Independent Torsion Suspension System	N/A	X
Leaf Spring Axle(s)	X	N/A
Radial Trailer Tires	X	X
Nev-R-Adjust <sup>®</sup> Electric Brakes, All Wheels	X	X
Tough, Powder Coated Frame	X	X
2-5/16" Coupler	X	X
205/75/R14C Tires		
STD: SV235, SV264, SV291, SV294	X	X
225/75/R15D Tires	N/A	X
STD: SP-191T, SV300, SV301, SV302, SV303, SV304, SV305	N/A	X

SURVEYOR OPTIONS	SPORT	SELECT
10th Anniversary Package	X	X
Interior Luxury Package	X	X
Exterior Luxury Package	X	X
15K Air Conditioner IPO 13.5 BTU A/C	O	O
Serta <sup>®</sup> "Dreamscape" Mattress	O	X
Day/Nite shades	O	O
Roof Ladder (N/A SP192T, SP224T & SV235RKS)	O	O
Outside gas grill (STD. SP240, SP295 & SV305)	O	O
Raised panel refer door inserts	O	O
Power tongue jack	O	O
Axle Risers (N/A SV300, SV301, SV302, SV303, SV304 & SV305)	N/A	O
Slide-Out Awning topper	O	O
CO <sup>2</sup> detector (Required in all models)	X	X
Booth dinette with Hide-A-Bed sofa IPO "Vista Lounge"	N/A	O

X = STANDARD EQUIPMENT, O = OPTIONAL, N/A = NOT APPLICABLE

## SURVEYOR WARRANTY INFORMATION

For Details on Surveyor's complete warranty program, see your Surveyor dealer. Surveyor offers the following additional limited warranties to the original purchasers. Consult written warranty for details.

1. Twelve year rubber roof warranty
2. Two year fiberglass warranty
3. Two year axle warranty
4. One year bumper to bumper warranty
5. Available second-year warranty



## PEACE OF MIND

### Coach-Net Roadside Assistance

Forest River has yet another exclusive feature to offer: One year of free roadside assistance will be given to every new Surveyor customer. This is just one more way to say "Thank you" and to ensure an enjoyable traveling experience.

### SURVEYOR SPORT MANDATORY OPTIONS

**10th Anniversary Package:** 21 lbs., Aluminum split spoke wheels, outside stereo speakers, exterior assist handle, LCD flat screen TV, ball bearing drawer guides, hitch light, extended down spouts, illuminated pass thru storage compartment and fully enclosed underbelly

**Interior Luxury Package:** 90 lbs., Raised panel cabinet doors w/ residential hinges, AM/FM/CD/DVD stereo system w/ remote control, 3 burner cooktop w/ Oven, microwave, skylight over tub/shower, tub surround, decorative wall paper border, double door refrigerator and E-Z glide dinette table

**Exterior Luxury Package:** 246 lbs., Electric awning, 30# LP bottles w/ cover, spare tire/carrier and cover, stabilizer jacks, TV antenna w/ cable/satellite hook-up, detachable 30 amp power cord, Alum-cage construction, 13.5 BTU air conditioner, double entry step, tinted safety windows Lamilux 1000 gel-coated fiberglass & black tank flush

### SURVEYOR SELECT MANDATORY OPTIONS

**10th Anniversary Package:** 33 lbs., Aluminum split spoke wheels, outside stereo speakers, exterior assist grab handle, Lamilux 4000 colored gel-coated fiberglass, 26" LCD flat screen TV (24" - 235RKS), slam latch baggage doors, ball bearing drawer guides, extended down spouts, illuminated pass thru storage compartment, hitch light and Shaw r2x residential stain resistant carpet

**Interior Luxury Package:** 208 lbs., Decorative shower curtain, raised panel cabinet doors w/ residential hidden hinges, stove cover, AM/FM/CD/DVD stereo system w/ remote control & 4 speakers, sofa pillows, water filtration system, 3 speed Fantastic fan in bathroom, 6 gal. G/E DSI water heater, 3 burner cooktop w/ oven, sink covers, tub surround, microwave, E-Z glide dinette table, decorative bedroom pillows, skylight over tub/shower, tub surround and the Serta® Dreamscape Mattress"

**Exterior Luxury Package:** 267 lbs., Electric awning, 13.5 BTU air conditioner, 30# LP bottles w/ cover, spare tire/carrier & cover, outside shower, power stabilizer jacks, TV antenna w/ cable/satellite hook-up, independent torsion axles w/ Ultralube hubs, enclosed & heated underbelly, Alum-cage construction, detachable 30 amp power cord, 2" exterior walls, (R-9) insulation, Lamilux 1000 gel-coated fiberglass, tinted safety glass windows & black tank flush

## SURVEYOR SPORT ADVANTAGES

- ALUMINUM FRAMING AROUND ALL OPENINGS
- FULL WALK ON ROOF
- ENCLOSED UNDERBELLY
- 30 LB. LP BOTTLES W/ COVER
- 4" SQUARE BUMPER
- TINTED SAFETY GLASS
- 78" INTERIOR HEIGHT
- DOUBLE STEPS
- DETACHABLE POWER CORD
- 80 LB. GAS STRUTS (QUEEN BED)
- WOOD MEDICINE CABINET
- 55 AMP POWER CONVERTER
- BALL BEARING DRAWER GLIDES
- GAS/ELECTRIC DSI WATER HEATER
- ELECTRIC AWNING
- BLACK TANK FLUSH
- E-Z GLIDE DINETTE TABLE
- SKYLIGHT IN TUB/SHOWER
- (4) SCISSOR STABILIZER JACKS
- OUTSIDE SHOWER

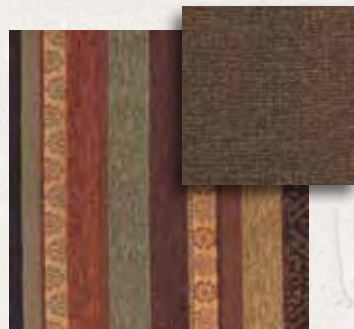
## SURVEYOR SELECT ADVANTAGES

- ALUMINUM FRAMING AROUND ALL OPENINGS
- 2" THICK SIDEWALLS
- INDEPENDENT TORSION AXLES
- HEATED AND ENCLOSED UNDERBELLY
- FULL WALK ON ROOF
- 78" INTERIOR HEIGHT
- GAS/ELECTRIC DSI WATER HEATER
- 30 LB. LP BOTTLES W/ COVER
- 4" SQUARE BUMPER
- WATER FILTRATION SYSTEM
- FANTASTIC FAN
- DETACHABLE POWER CORD
- 60" X 80" QUEEN BEDS (N/A SV-235RKS)
- 80 LB. GAS STRUTS (QUEEN BED)
- TINTED SAFETY GLASS
- OUTSIDE SHOWER
- BLACK TANK FLUSH
- ELECTRIC AWNING
- E-Z GLIDE DINETTE TABLE
- POWER STABILIZER JACKS
- SERTA® MATTRESS

### DESIGNER INTERIORS



TUSCANY



HARVEST



ESPRESSO



SPICE

# Surveyor

10<sup>th</sup> Anniversary Edition

## DISCOVER THE BENEFITS



### PRE-DELIVERY INSPECTION FACILITY

20,000 square feet of quality assurance. The bare essentials for a premium product. This state-of-the-art facility gives immediate daily feedback to production for quality assurance in every unit built.



Forest River, Inc. encourages our customers to purchase their Forest River products from a local dealership whenever possible for the following reasons:

- 1) Forest River, Inc. dealers are independently owned and operated businesses so priority service and scheduling is at their discretion and is often provided to customers that purchased their unit at that dealership.
- 2) Purchasing locally allows customers to establish meaningful relationships with a dealer, enhancing the RV experience through assistance with product questions, user tips or RV regulations for your state or country, and much more!
- 3) Canadian customers must meet requirements to bring an RV purchased out of the country to their home. These requirements may involve additional inspections and certifications, taxes and fees. Your local Canadian Dealer is a professional at meeting these requirements.
- 4) Scheduling timely warranty repairs and adjustments through a local dealership provides far greater flexibility and convenience to you, the customer!

It is the goal of Forest River, Inc. that all of our RV owners fully enjoy the RV experience and that customer satisfaction meets or exceeds their expectations!



TRA Certified **GREEN** Capable Manufacturer. Surveyor has been certified as a **GREEN** Capable Manufacturer. TRA Certification's evaluation of their quality system, production process, material usage, recycling & environmental practices has earned them this distinction.



Learn More  
Scan this barcode using a QR Reader on your smart phone to learn more about Forest River.



A Berkshire Hathaway company.

All specifications contained herein are based on the latest product information at time of printing. Forest River reserves the right to make changes in colors, materials, equipment and specifications at any time without notice and assumes no responsibility for any errors in this brochure. PLD 918