



**Camping As It Was
Meant To Be
Affordable And Care Free!**



STANDARD AND OPTIONAL FEATURES

THE "ORIGINAL DUTCHMEN" VALUE PACKAGE - PREMIUM STANDARD FEATURES

- Large Power Awning (Classic And Lite Models)
- 13.5 BTU Roof Air Conditioning
- Large Double Door Gas/Electric Refrigerator
- 1 CU Ft. Microwave Oven With Carousel
- Four Corner Stabilizer Jacks
- Spare Tire With Carrier
- 6 Gallon Quick Recovery Gas/Electric/DSI Water Heater With Bypass Kit And Low Point Drains
- Tinted Safety Glass Windows
- Night Shades In Living Area (Classic And Lite Models Only)

SUPER LOUNGE SLIDE ROOMS

- 155" Extra Wide Super Slide Rooms
- Oversized 84" X 48" U-Shaped Dinette (See Floor Plans)
- Extra Long 68" Comfort Air - Hide A Bed Sofa With Air Mattress
- Available in Classic Models - See Floorplans

CLASSIC DUTCHMEN PREMIUM CONSTRUCTION

- Walls**
- Aerodynamic Front Profile With Lower Diamond Plate Rock Guard
 - Wood Stud Construction - 16" On Center With Heavy Duty Belt Rail
 - Hurricane Straps Integrate Walls To Roof And Floor
 - Heavy Duty .024" Mesa Sidewall Metal - Thicker And Stronger Than The Competition
 - R7 Fiberglass Insulation
 - Prepped For Rear Ladder (Classic And Lite Models)
 - Fiberglass Key-Locking, Radius Corner Exterior "Storage Plus" Compartments
 - Fiberglass Key-Locking, Radius Corner Entry Door
 - Pac-N-Play Storage - See Floorplans
 - Large Picture Window At Dinette
 - Large Folding XL Entry Handle (Classic And Lite Models)
 - 120V Exterior Outlet
- Roof**
- Truss Style Walk-On Roof With Fiberglass Insulation
 - Epdm Rubber Roof With 12 Year Mfg Warranty

- 3/8" Roof Decking
 - Roof Ducted Air Conditioning (Classic And Lite Models)
 - Extra Long Extended Rain Gutters
- Floor**
- 3 1/8" Thick Floor Structure With Water Resistant Underbelly
 - 5/8" Floor Decking
 - Premium Vinyl Flooring
 - Residential Grade Living Room Carpeting With Pad (Classic Models)

Chassis

- Heavy Duty Steel I-Beam Frame
- Dual Battery Tray
- 2 5/16" Coupler
- Break-Away Trailer Switch
- Heavy Duty Safety Chains
- 12V Electric Slide-Out Motor With Override
- Easy Lube Axles (Classic And Lite Models)
- Extra Deep Easy-Folding Entry Steps
- Rear Bumper With Sewer Hose Storage

ARMOR GUARD PROTECTION PACKAGE

- Classic and Lite Models Only
- Enclosed And Heated Fresh Water Tank
- Large 46 Gallon Fresh Water Tank
- Protects Fresh Water Tank From Road Debris And Damage
- Water Tank Mounted Below Floor To Increase Interior Storage

DOUBLE SKYLIGHTS IN EVERY UNIT

- Skylight Over Tub Or Shower
- Skylight In Galley (Classic And Lite Models Only)

STORE MORE CABINETRY

- New Cabinet Design - More Storage Space - Full Access Cabinets, Larger Drawers
- Raised Panel Hardwood Radiant Oak Cabinets Doors In Galley
- Hardwood Radiant Oak Cabinets Doors And Drawer Fronts Throughout
- Large Galley Storage Pantry (See Floorplans For Availability)
- Large Pots And Pan Drawer - With Heavy Duty Ball Bearing Drawer Glides (Classic Models)
- Solid Wood Drawers With Metal Residential Drawer Glides

MEDIA CENTER PREMIUM ENTERTAINMENT SYSTEM

- 19" Or 26" Flat Screen HD LCD TV - See Floorplans (Classic And Lite Models)
- New Swivel Entertainment Center - TV Viewable In Bedroom And Living Area - Select Floorplans
- Flat Panel TV Prep (Sport Models)
- 12V AM/FM/CD/DVD Stereo With Mp3 Input (Classic And Lite Models)
- 12V AM/FM/CD Stereo With Mp3 Input (Sport Models)
- Interior Speakers
- Exterior Speakers (Classic and Lite Models)
- Digital TV Antenna With Booster
- Wired For Cable/Satellite
- Bedroom TV Prep For Flat Panel TV's

ACU-WEIGHT CERTIFICATION

- Real Weights - All Units Weighed Before Leaving The Factory
- Weights Include Options - See Acu-Weight Decal On Unit For Exact Weight Of Your Unit

Interior Features

- 110 Volt Interior And Exterior Duplex Receptacles
- Premium 12 Volt Water Pump
- Floor Ducted Heating (Most Models)
- Electronic Power Converter With Battery Charger

Living Room Features

- Premium Residential Furniture
- Large Slide-Out Overhead Cabinets
- Premium Slide-Out Fascia
- Designer Window Valances With Night Shades in Living Room (Lite and Classic Models)
- Mini Blinds Throughout (Sport Models)
- 12 Volt Lights Over Dinette
- Comfort Air - Hide A Bed Sofa With Air Mattress (Classic Models)
- Flip-Over Sofa Bed (Lite & Sport Models)

Kitchen Features

- Power Range Hood With 12 Volt Light And Exhaust Fan
- Extra Large, Double Bowl Sink With High Rise Faucet
- Auto Ignition 3 Burner Range With Oven Built In Countertop Extension Where Possible (See Floorplans)
- Sink And Stove Cover

Bedroom Features

- Prepped For Flat Screen TV In Bedroom (Classic And Lite Models)
- Lift-Up Bed Platform With Storage Below (See Floorplans)
- Designer Bedding Package With Bedspread And Headboard
- Reading Lights
- Deluxe Inner-Spring Mattress
- Privacy Curtain Or Sliding Bedroom Doors (See Floorplans)
- Vent In Bedroom (Classic Models)

Bathroom Features

- ABS Tub & Shower Surround
- Glass Shower Door For Neo-Angle Showers (See Floorplans)
- Shower Curtain For Tub Models (See Floorplans)
- Hardwood Medicine Cabinet With Mirror (Classic And Lite Models)
- 12 Volt Power Exhaust Roof Vent In Bath
- GFI Protected 110 Volt Duplex Receptacles
- Foot Flush Toilet

Exterior Features

- Lp Quick Connect
- Exterior Shower/Wash Station
- Extra Large Holding Tanks
- LP Bottles With Deluxe ABS LP Bottle Cover with Quick Fill Panel and Auto Change Over (Classic Models)
- 20 Pound Lp Bottles (Sport & Lite Models)
- Detachable 30 Amp Power Cord

Optional Features

- Fiberglass Sidewall Package
- Free-Standing Dinette (Classic Models)
- 15,000 BTU A/C - Ducted (Classic Models)

*See website for specifications on Park Models

www.dutchmen-rv.com

Dutchmen Manufacturing, Inc. • 2164 Caragana Court • Goshen, Indiana 46526

Sales: 574.534.1224 Fax: 574.975.0626

Your Local Dealer

DUTCHMEN

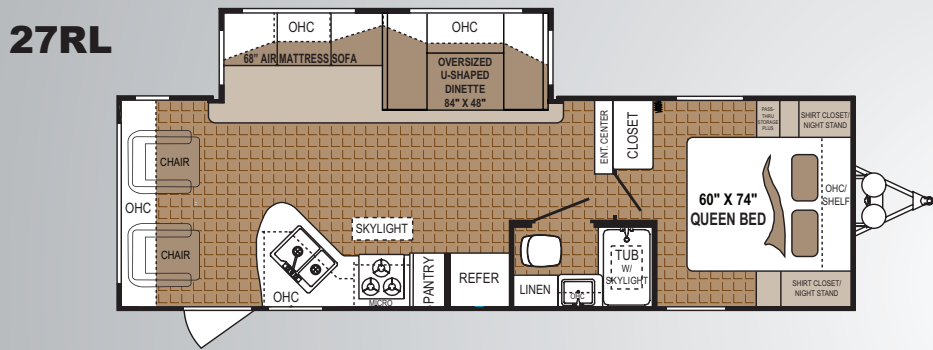
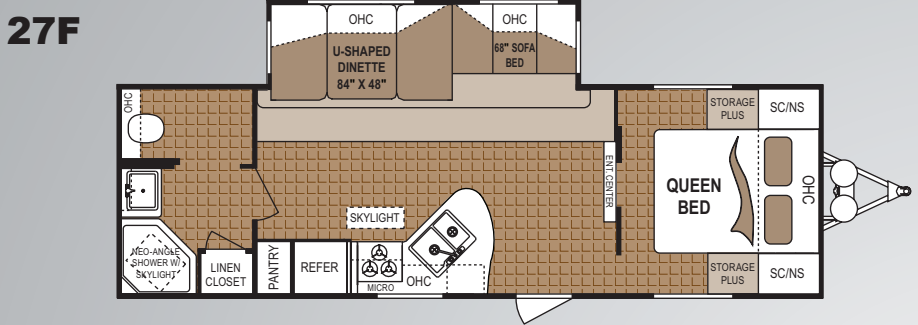
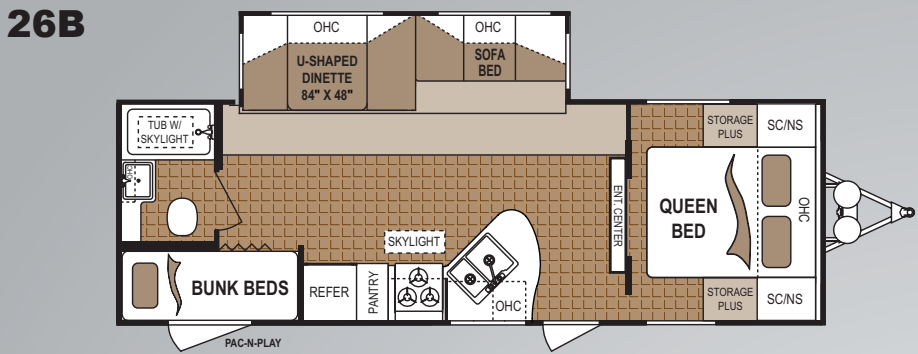
Camping As It Was Meant To Be – Affordable And Care Free!

FEATURES - ALL MODELS

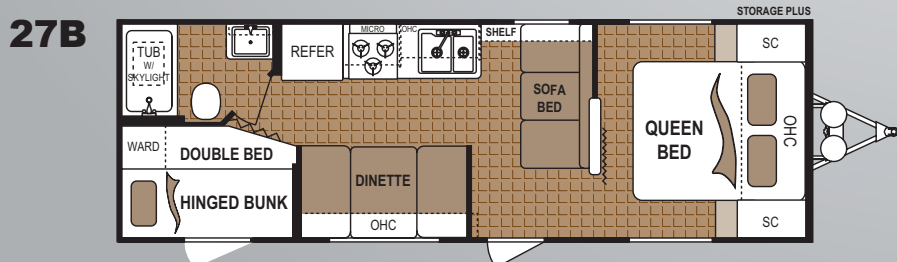
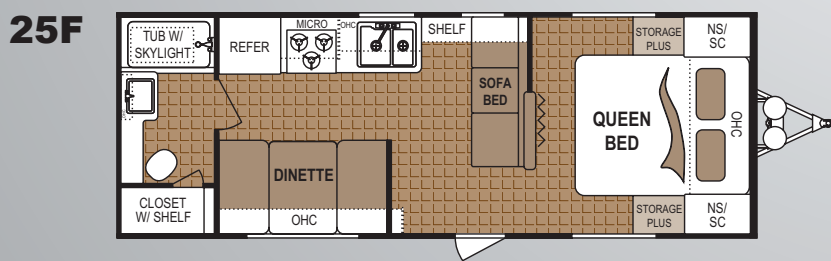
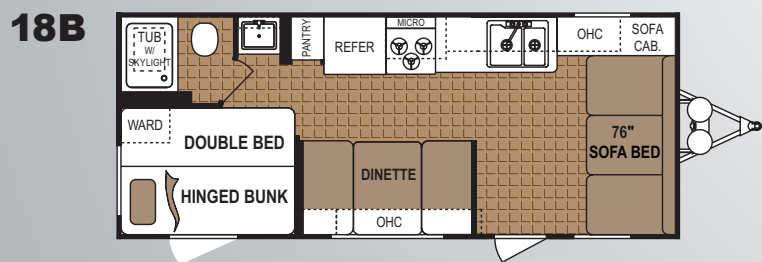
- The "ORIGINAL DUTCHMEN" Value Package
- "SUPER LOUNGE" Slide Rooms
- "CLASSIC DUTCHMEN CONSTRUCTION"
- "ARMOR GUARD" Protection Package
- "DOUBLE SKYLIGHTS" Kitchen & Bathroom
- "STORE MORE" Cabinetry
- "MEDIA CENTER" Entertainment Package
- "ACU-WEIGHT" Certification



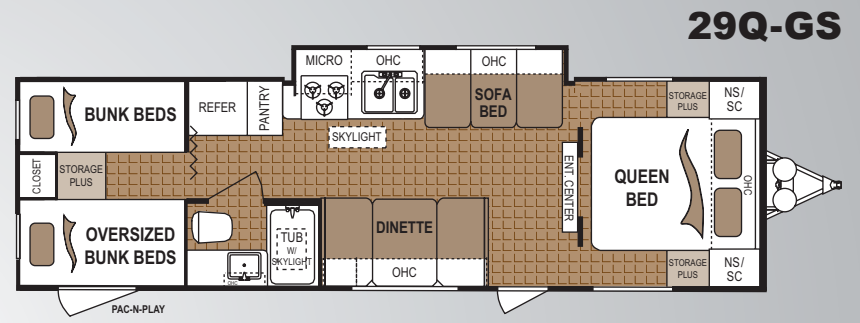
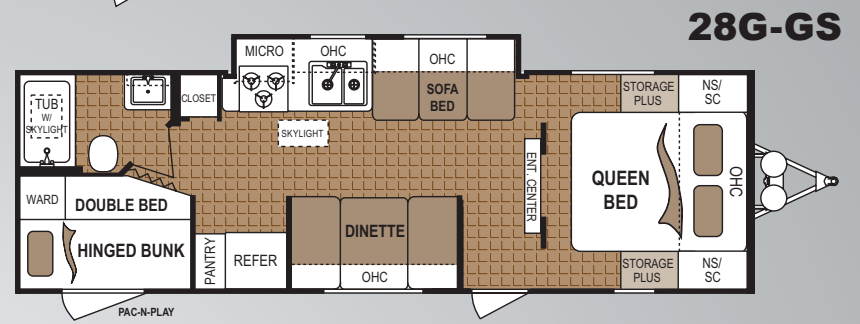
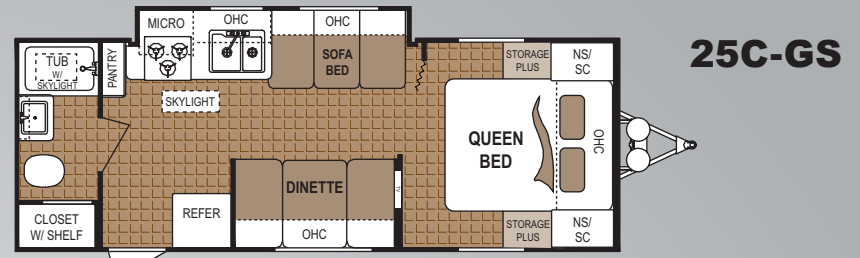
Dutchmen Classic Floorplans



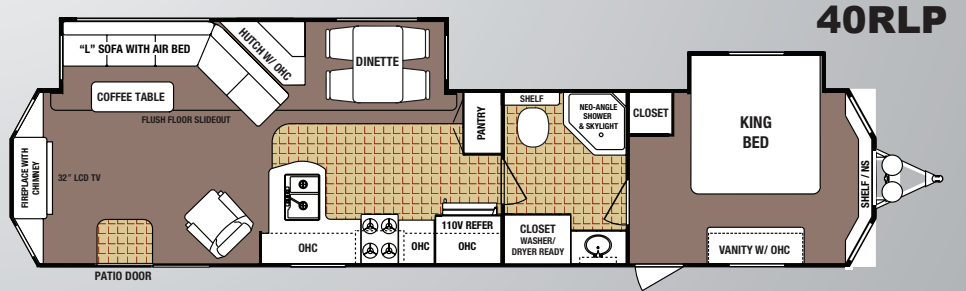
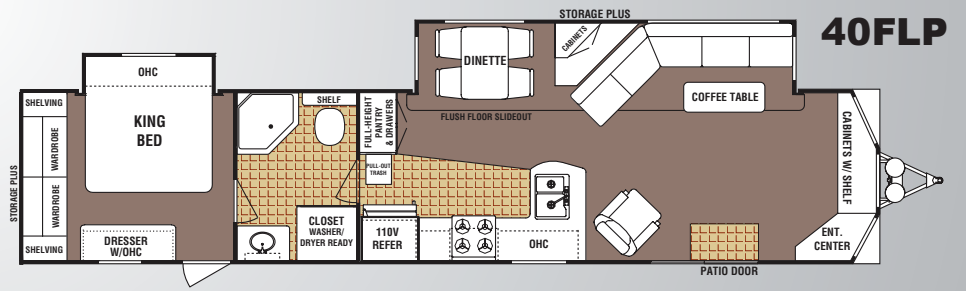
Sport Floorplans



Dutchmen Lite Floorplans



Park Model Floorplans



WEIGHTS & SPECIFICATIONS

	Unloaded Weight	Hitch Weight	Net Cargo Capacity	Exterior Length	Exterior Height	Fresh Water	Grey Water	Black Water	Furnace Size
18B SPORT	4262	444	3438	23' 19"	10' 3"	46	42	42	20,000
25C-GS	5004	462	2696	26' 2"	10' 4"	46	42	42	25,000
25F SPORT						46	42	42	25,000
26B	6202	804	3478	28' 8"	11' 0"	46	42	42	30,000
27F	6368	708	3312	30' 1"	11' 0"	46	42	42	30,000
27B SPORT	4646	604	3054	28' 7"	10' 4"	46	42	42	25,000
27RL	6150	775	3529	30' 0"	11' 0"	46	42	42	30,000
28G-GS	5476	676	2224	29' 11"	10' 3"	46	42	42	30,000
29Q-GS	5920	780	1780	31' 8"	10' 4"	46	42	42	30,000
40FLP Park Model	9783	1111	1393	42' 6"	12' 10"	60	42/36	42	34,000
40RLP Park Model	9836	1010	1340	41' 8"	12' 10"	60	42/36	42	34,000