

# ROCKWOOD

Ultra Lite • Mini Lite • Roo



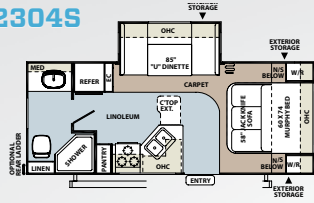
ROCKWOOD  
Ultra Lite • Mini Lite • Roo



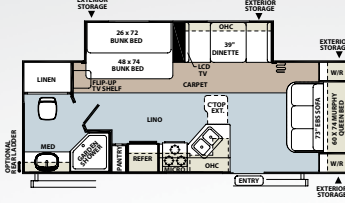


Murphy Bed in the Down Position

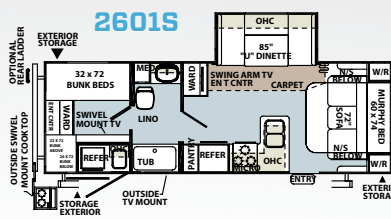
2304S



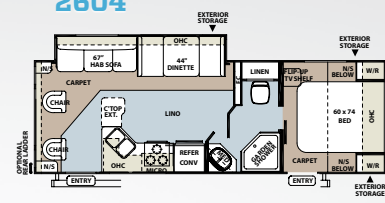
2501SS



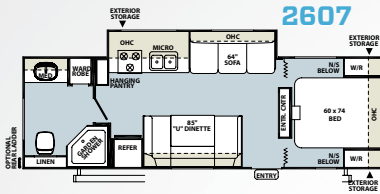
2601S



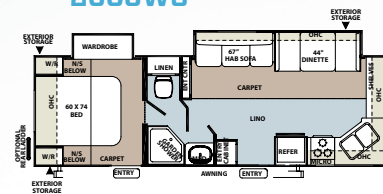
2604



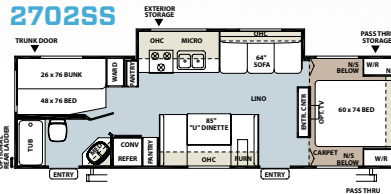
2607



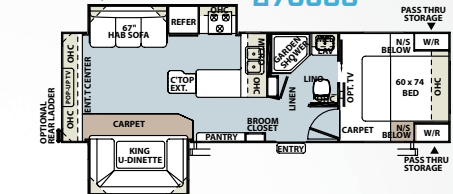
2608WS



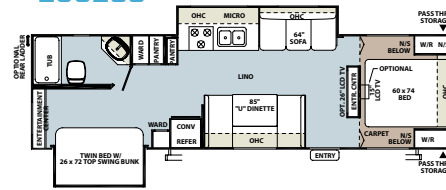
2702SS



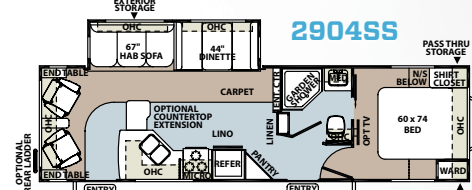
2703SS



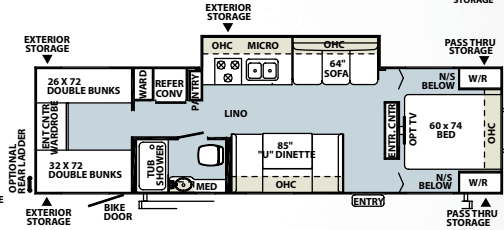
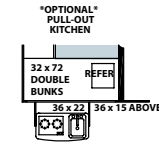
2902SS



2904SS



2907SS



2601S Standard Outside Kitchen with Rear Quad Bunks

# Rockwood Ultra Lite

We have custom designed our trailers for the best look and feel you expect when owning a Rockwood.

Quality craftsmanship and attention to detail have been put into our trailers—all with you in mind. The expansive queen-size beds, kitchen dinettes and exterior storage compartments are just a few notable features.



## Specifications

Model number of any particular unit does not necessarily reflect the overall length of the unit itself. Dry weight are estimates.

MODEL	2304S	2501SS	2604	2601S	2607	2608WS	2702SS	2703SS	2902SS	2904SS	2907SS
GVWR (Gross Vehicle Weight Rating)	6594	6653	6603	6767	6580	6698	6594	7474	7703	7683	7384
BASE/DRY UNIT WEIGHT	4688	5231	5535	5255	4900	5675	5263	6048	5644	5889	5384
BASE DRY HITCH WEIGHT	678	653	603	767	580	698	594	474	703	683	641
BASE DRY AXLE WEIGHT	4010	4578	4932	4488	4320	4977	4669	5574	4941	5206	4743
CARGO CAPACITY	1833	1384	1030	1474	1642	985	1293	1388	1833	1756	1833
LENGTH	23' 9"	27' 5"	29' 7"	29' 5"	29' 7"	29' 7"	31' 11"	31' 11"	33' 5"	33' 5"	33' 5"
WIDTH	96"	96"	96"	96"	96"	96"	96"	96"	96"	96"	96"
HEIGHT W/O A/C	115"	118"	118"	118"	114"	120"	114"	114"	115"	115"	115"
INTERIOR HEIGHT	78"	78"	78"	78"	78"	78"	78"	78"	78"	78"	78"
FRESH WATER CAPACITY	36 gal	36 gal	36 gal	36 gal	36 gal	36 gal	36 gal	36 gal	36 gal	36 gal	36 gal
GRAY WATER CAPACITY	37 gal	37 gal	37 gal	37 gal	37 gal	74 gal	37 gal	37 gal	37 gal	74 gal	37 gal
BLACK WATER CAPACITY	37 gal	37 gal	37 gal	37 gal	37 gal	37 gal	37 gal	37 gal	37 gal	37 gal	37 gal

Rockwood Mini Lite | 2502S • Seagrass with Hickory



Rockwood Mini Lite | 1901 • Austin with Tuscan



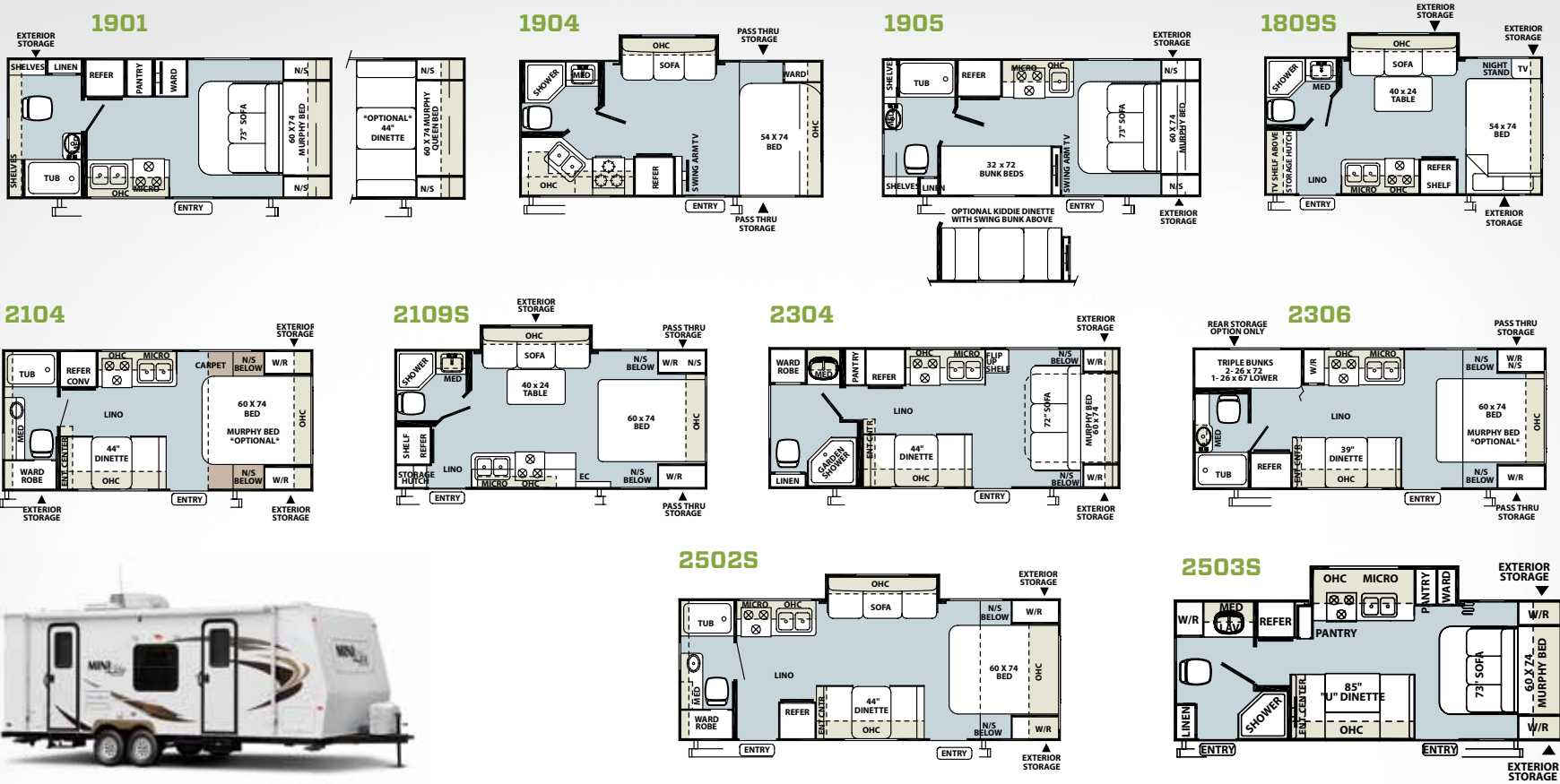
1901, 1904, 1905 Exterior Profile



Sofa Accessible w/ Murphy Bed in Stored Position



Murphy Bed in Shown in the Down Position



Rockwood

# Mini Lite

*Mini but mighty. The Mini Lite is here.*

Mini Lite trailers are excellent for those who want to move from the tent camper to the lightweight towable. The light, small compact design was created for families driving vans and small sport utility vehicles. With residential amenities and excellent features, you're sure to enjoy the Mini Lites.

## Specifications

*Model number of any particular unit does not necessarily reflect the overall length of the unit itself. Dry weight are estimates.*

MODEL	1901	1904	1905	1809S	2104	2109S	2304	2306	2502S	2503S
GVWR (Gross Vehicle Weight Rating)	3846	3874	3892	4636	4786	4777	4951	4718	6119	6192
BASE/DRY UNIT WEIGHT	2785	2827	2761	3344	3419	3637	3717	3646	4136	4211
BASE DRY HITCH WEIGHT	346	374	392	236	386	377	551	318	325	425
BASE DRY AXLE WEIGHT	2439	2453	2369	3108	3033	3260	3166	3328	3811	3786
CARGO CAPACITY	1233	1233	1233	1233	1233	1233	1233	1233	1833	1833
LENGTH	20' 4"	20' 4"	20' 4"	19' 11"	21' 8"	21' 6"	23' 7"	23' 7"	25' 8"	25' 8"
WIDTH	90"	90"	90"	96"	96"	96"	96"	96"	96"	96"
HEIGHT W/O A/C	110"	110"	110"	109"	107"	111"	109"	109"	112"	112"
INTERIOR HEIGHT	78"	78"	78"	78"	78"	78"	78"	78"	78"	78"
FRESH WATER CAPACITY	36 gal	36 gal	36 gal	36 gal	36 gal	36 gal	36 gal	36 gal	36 gal	36 gal
GRAY WATER CAPACITY	30 gal	30 gal	30 gal	30 gal	30 gal	30 gal	30 gal	30 gal	30 gal	30 gal
BLACK WATER CAPACITY	30 gal	30 gal	30 gal	30 gal	30 gal	30 gal	30 gal	30 gal	30 gal	30 gal



## Rockwood Features

*Rockwood takes careful consideration to each feature added into each product produced. Every detail is considered ranging from extra sleeping room, storage, comfort and convenience.*

Take time to review the features listed below and match them with the competition's products. We're confident you'll discover Rockwood the superior choice.



Power Awning with  
Adjustable Rain Dump *(Opt.)*

Solid wood Doors & Drawers *(Std.)*

26" & 32" LCD TV w/ 5.1 Dolby  
Speaker System and Satellite Radio  
*(Opt. UL: Select Models)*

Aluminum Wheels *(Opt.)*



# Luxurious Residential Fabrics



Riviera



Austin



Seagrass

Standard Floor  
Covering



Cherry Décor  
Option

Hickory Décor  
Option



Tuscan Décor  
Option

Wood-Look Floor  
Covering Only  
available with  
Tuscan & Combo  
Décors

RVQ grill (Opt.)



Water Filter (Std. Opt.)



Outside Speakers  
(Std: 1901, 1904, 1905  
Opt: All Other Models)



Outside Shower (Std.)



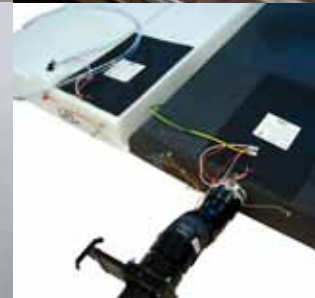
Fantastic Fan  
(Std. Opt.)



Heated Innerspring  
Mattresses  
(Std. Opt.)



Heated Holding Tanks  
with 12 Volt Heat Pads.  
(Opt.)



Outside Antifreeze  
Inlet with Easy Access  
to Water Pump in  
Storage Compartment  
for Convenient  
Winterizing. (Std.)





Rockwood

# Construction

*Rockwood takes pride in constructing the very best products possible in each price point. From our entry level units to our top of the line products, no short cuts are taken to achieve excellence.*

From the all-steel I-beams to the residential interior amenities to the vacuum-bonded exteriors, Rockwood products are quality-built from the ground-up.

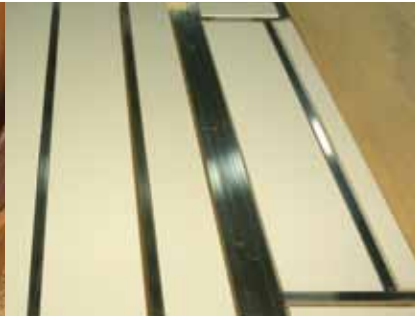
Glued and screwed wood cabinetry



Aluminum dinette frames for added strength and weight savings



Vacuum-bonded floor with 16" on center aluminum floor joists  
*(Std. Ultra Lite, select Roo models)*



Dexter® Axle Torflex

- Independent wheel suspension and self-damping action
- Rubber cushioning eliminates metal-to-metal contact.
- Forged torsion arm for maximum strength



Extra large dinette storage drawers



Full extension metal drawer guides in the kitchen



Enclosed underbelly protects trailer components as well as increasing aerodynamics *(Ultra Lite only)*



Fiberglass exterior with deluxe graphics



## Wall Strength



Structurally engineered materials makes our vacuum-bonded walls some of the strongest in the industry.

## Vacuum-Bonded Laminated Construction



Rockwood is one of the few light weight manufacturers that is a fully 6 sided vacuum-bonded trailer. Our walls, floors, roof, fronts and backs are all built vacuum-bonded to ensure a light weight strong structural trailer.

## Roof Construction



Vacuum-bonded roof with 2" radius



Radius roof foam with built in insulated A/C ducts

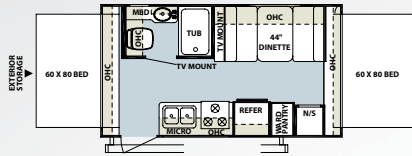


4.5" thick roof foam

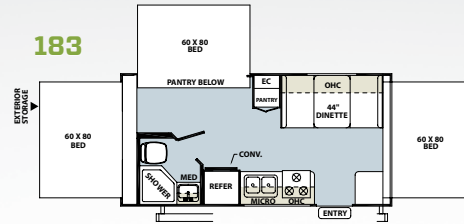


Air Mattress Hide-A-Bed Sofa (Opt. on Roo's 21SS, 21SSL Only)

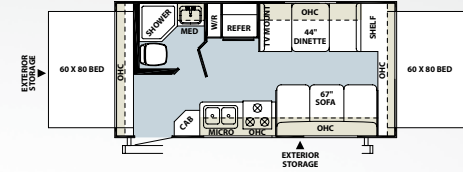
17



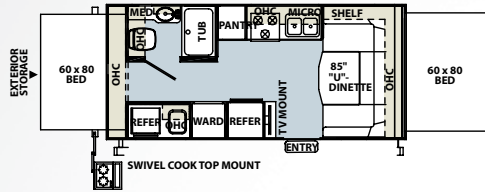
183



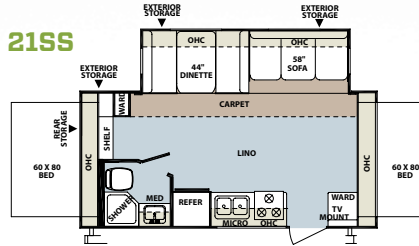
19



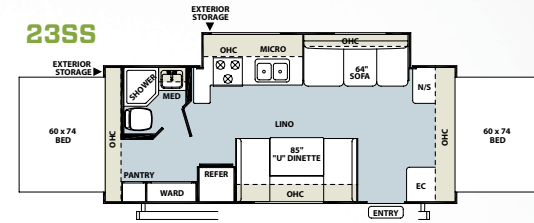
21DK



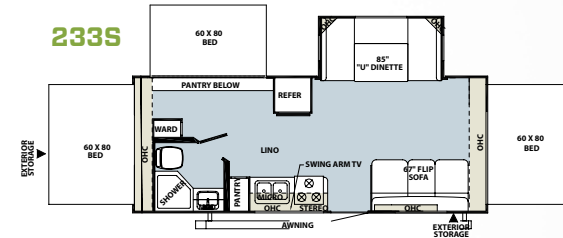
21SS



23SS



233S



Rockwood

# Roo

Rockwood redefines camping by having the necessities of residential living on the camp site. It's all in the details.

Features like the heated innerspring mattresses so you remain warm at night, fully equipped kitchens bringing the convenience of home to meal time and expanded interior space provided by the spacious drop down bunks, are simple amenities that add tremendously to the comfort of your vacation. It's your vacation. Do it right.

## Specifications

Model number of any particular unit does not necessarily reflect the overall length of the unit itself. Dry weight are estimates.

MODEL	17	183	19	21DK	21SS	23SS	233S
GVWR (Gross Vehicle Weight Rating)	3841	4774	4770	4867	5743	6347	5764
BASE/DRY UNIT WEIGHT	3063	3391	3383	3638	4311	4254	4351
BASE DRY HITCH WEIGHT	341	374	370	467	570	458	647
BASE DRY AXLE WEIGHT	2722	3017	3013	3171	3741	3796	3704
CARGO CAPACITY	740	1345	1349	1191	1233	1833	1833
LENGTH	18' 9"	20' 9"	20' 9"	21' 9"	21' 9"	24' 9"	23' 9"
TRAILER LENGTH (OPEN)	22' 11"	24' 9"	24' 9"	25' 6"	25' 6"	28' 9"	27' 9"
WIDTH	96"	96"	96"	96"	96"	96"	96"
HEIGHT W/O A/C	110"	111"	112"	120"	120"	115"	114"
INTERIOR HEIGHT	78"	78"	78"	78"	78"	78"	78"
FRESH WATER CAPACITY	36 gal	36 gal	36 gal	36 gal	36 gal	36 gal	36 gal
GRAY WATER CAPACITY	30 gal	30 gal	30 gal	30 gal	30 gal	30 gal	30 gal
BLACK WATER CAPACITY	30 gal	30 gal	30 gal	30 gal	30 gal	30 gal	30 gal



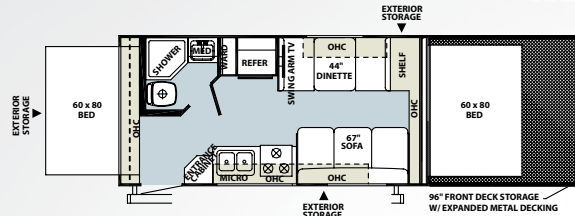
Front Bunks in Storage Position



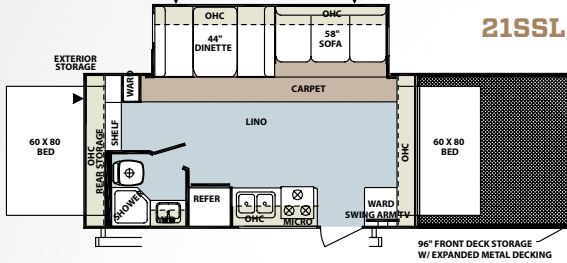
Front Bunks in Sleeping Position

## Front Storage Deck Models

19L

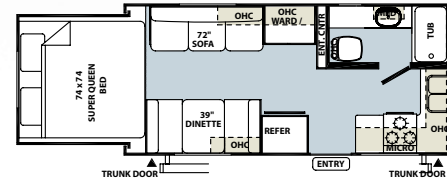


21SSL

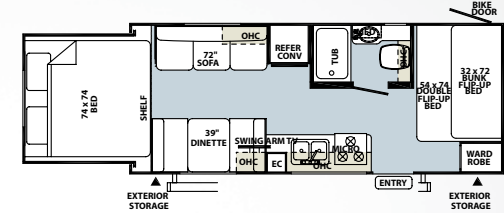


## Rear Slide Models

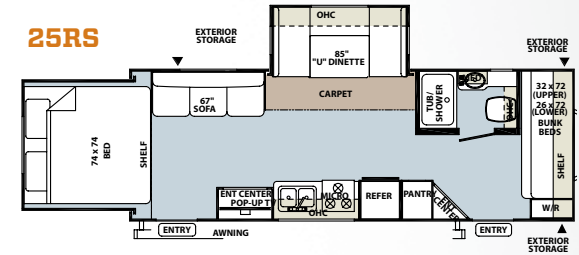
21RS



23RS



25RS



## Specifications

Model number of any particular unit does not necessarily reflect the overall length of the unit itself. Dry weight are estimates.

MODEL	FRONT DECK STORAGE		REAR SLIDE		
	19L	21SSL	21RS	23RS	25RS
GVWR (Gross Vehicle Weight Rating)	7321	7322	5450	6145	6502
BASE/DRY UNIT WEIGHT	4432	4883	4048	4143	4841
BASE DRY HITCH WEIGHT	321	322	482	499	502
BASE DRY AXLE WEIGHT	4111	4561	3566	3644	4339
CARGO CAPACITY	2900	2401	1233	1833	1624
LENGTH	30' 1"	31' 1"	21' 9"	23' 10"	27' 5"
TRAILER LENGTH (Open)	33' 5"	35' 6"	25' 2"	28' 5"	32'
WIDTH	96"	96"	96"	96"	96"
HEIGHT W/O A/C	118"	120"	116"	116"	116"
INTERIOR HEIGHT	78"	78"	78"	78"	78"
FRESH WATER CAPACITY	36 gal	36 gal	36 gal	36 gal	36 gal
GRAY WATER CAPACITY	30 gal	30 gal	30 gal	30 gal	30 gal
BLACK WATER CAPACITY	30 gal	30 gal	30 gal	30 gal	30 gal

Rockwood

# Roo

Developing the Roo, we created different models to meet individual needs.

Our front deck storage models are great for bringing golf carts, ATVs or dirt bikes to your campground. For those who prefer the feel of a traditional trailer, the rear hard slide models provide solid walls which slide smoothly into place. Any model you choose will deliver the quality you expect from Rockwood Roo.

# Rockwood Ultra Lite, Mini Lite & Roo Standards & Options

Models	UL	ML	R	Models	UL	ML	R	Models	UL	ML	R
<b>INTERIOR FEATURES</b>											
· Tuscan, Hickory or Cherry Interior	0	0	0	· 26" LCD TV With 5.1 Digital Dolby Surround Sound Speaker System (N/A w/ UL: 2304S)	0	--	--	· Free Standing Table and Chairs (UL: 2604, 2608WS, 2904SS Only)	S*	--	--
· Solid Wood and Raised Panel Doors and Drawers	S	S	S	· 32" LCD TV With 5.1 Digital Dolby Surround Sound Speaker System (UL: Std. 2703SS Opt. 2904SS, 2907SS)	S*/O*	--	--	· Stainless Steel Appliances	0	0	0
· Screwed and Glued Wood Cabinetry	S	S	S	· Digital AM/FM/CD/DVD w/ Remote	CPB	S*/CPA	S	· Raised Refrigerator Panels	0	0	0
· Residential Full Extension Metal Drawer Guides in Kitchen	S	S	S	· MP3 Player Hook-Up	S	S	S	· Auto Gas/Electric Refrigerator	S	S	S
· Flooring: Carpet and an Engineered Mold and Mildew Resistant Floor Covering (R: 21SS, 21SSL, 233S Only UL: All Models)	S	--	S*	· Satellite Radio (UL: Included w/ 26" & 32" LCD TV Opt.)	0	--	--	· Three Burner High Output Gas Range	S	S	S
· Engineered Mold and Mildew Resistant Floor Covering	S	S	S*	· Decorative Valances	--	S	S	· Upgraded 22" Gas Oven (Required R: 23SS)	CPB	OP/CPA	O*
· Minimum Carpet	0	--	--	· Designer Valances w/ Lambrequin Arms	S	--	--	· Microwave	CPB	OP/CPA	CPC
· Ducted Furnace	--	S	S	· Mini Blinds	S	--	--	· Double Bowl Sink w/ Residential Style Faucet (ML: NA 1905)	S	S	S
· Floor Ducted Furnace	S	--	--	· Day/Night Shades	0	--	--	· Residential One-Piece Sink Cover	S	--	--
· 13,500 BTU Ducted Air (ML: 2502S, 2503S R: 21SS, 21SSL, 23SS, 233S, 21RS, 23RS UL: All Models)	CPB	CPA*	CPC*	· Swivel Chairs (Std. UL: 2604 Only)	S*	--	--	· Cutting Board	S	S	S
· 15,000 BTU Ducted Roof Air (ML: 2502S, 2503S Only)	0	O*	--	· Serta Recliners (Std. UL: 2904SS Only)	S*	--	--	· Counter Top Extension (Available UL: 2304S, 2501SS, 2604, 2904SS Only)	0	--	--
· 13,500 Roof A/C (ML: All Except 2502S, 2503S R: 17, 183, 19, 19L, 21DK)	--	O*/CPA*	CPC*	· End Table with Attached Lamp (Std. UL: 2604, 2904SS)	S*	--	--	· Water-Pur Filtration System	SO	SO	SO
· Carbon Monoxide Detector	SO	SO	SO	· Air Hide-A-Bed Sofa w/ Storage (Std. w/ UL: 2604, 2608WS, 2703SS, 2904SS)(Opt. R: 21SS/21SSL)	S*	--	O*	· Tub Surround	S	S	S
· 12 Volt Power Plug Hook-up	S	S	S	· Jack Knife Sofa (UL: 2902SS Only)	O*	--	--	· Bathroom Skylight	S	S	S
· CSA	0	0	0	· Aluminum Bed and Dinette Frames	S	S	S	· 110 DSI Gas/Electric Six Gallon "Quick Recovery" Water Heater	CPB	OP/CPA	CPC
· Monitor Panel Switch Station	S	S	S	· 44" Family Dinette (N/A w/ UL: 2304S, 2601S, 2607, 2702SS, 2703SS, 2902SS, 2907SS)	S*	S	S	· Water Heater By-Pass Kit	S	S	S
· 55 Amp Converter With Charger	S	S	S	· 48" X 84" Spacious King-U-Style Dinette (Std. w/ UL: 2304S, 2601S, 2607, 2702SS, 2703SS, 2902SS, 2907SS)	S*	--	--	· Foot Flush Toilets	S	S	S
· Battery Disconnect Switch	S	S	S	· 44" Dinette ILO Sofa (ML: 1901 Only)	--	O*	--	· Create-A-Breeze Three Speed Fantastic Vent	SO	SO	SO
· Directional Reading Lights on Sofa Slides	S	S	S	· Kiddie Dinette With Upper Swing Bunk (ML: 1905 Only)	--	O*	--	· Extra Create-a-Breeze Fan (N/A w/ ROO: 17, 19, 19L)	0	0	O*
· Bunk Fan/Light Combination with Each Bed	--	--	S	· Free Standing High Pressure Laminated Table with Swing Level Legs (ML: Swing Level Legs N/A 1901, 1904, 1905, 1809S, 2109S)	S	S*	S	· Murphy Bed System for Unmatched Floor Plan Flexibility (Opt. ML: 2104, 2306 Only)(Std. ML: 2304, 2503S 1901, 1905, UL: 2304S, 2501SS, 2601S)	S*	O*/S*	--
· Mounted 22" LCD TV	CPB	O*/CPA	CPC					· Twin Beds (2604 Only)	O*	--	--
· Bedroom Mounted 22" LCD TV (UL: Opt. w/ 2501SS, 2604, 2607, 2608WS, 2702SS, 2703SS, 2902SS, 2904SS, 2907SS Only and Std. w/ 2601S Only)	S*/O*	--	--					· Heated Mattress	SO	SO	SO

UL = ULTRA LITE  
ML = MINI LITE

R = ROO  
S = STANDARD

SO = STANDARD OPTION  
O = OPTIONAL

-- NOT AVAILABLE  
\* = SELECTED MODELS

OP = OPTIONAL PACKAGE  
CP = CONVENIENCE PACKAGE



Models	UL	ML	R
<b>EXTERIOR FEATURES</b>			
· Fully Laminated Aluminum Frame (Floor, Sidewall, & Roof)	S	S	S
· Insulation Factors R-7 Side Wall, R-12 Floor and R-14 Ceiling	S	S	S
· Radius Roofs	S	S	S
· Vinyl / Rubber Composite Roofing Membrane	S	S	S
· TV Antenna w/ Cable & Satellite Hook-Up	CPB	OP/CPA	CPC
· Laminated Lamilux 1000 Fiberglass Sidewalls	S	S	S
· Electric Slide-Out (All Slide Out Models)	S	S	S
· Decorative Frame Skirting	S	--	S
· Industrial Lockable Bed Latches	--	--	S
· Easy Step Assist to Access Bed Latches	--	--	S
· Bed Cable System (No Poles)	--	--	S
· Rear Ladder (UL: Only)	0	--	--
· Power Awning With Adjustable Rain Dump	CPB	0	0
· Awning	--	OP/CPA	CPC
· Awning Slide Topper	0	0	0
· Entrance / Screen Door	S	S	S
· Grab Handle Next to Entrance Door	--	S	S
· Large Assist Grab Handles	CPB	--	--
· Radius Corner Windows and Doors	S	S	S
· Windows w/ Tinted Safety Glass	CPB	CPA	CPC
· Storm Windows available	0	0	0
· Large Dinette Picture Window	S	S	S
· Outside Grill Prep	S	S	S
· Outside Gas Grill and Worktable	CPB	CPA	0
· Outside Kitchen (UL: 2907 Only)	0*	--	--
· Outside Speakers (Std. ML: 1901, 1904 1905)	CPB	OPG/CPA	CPC
· Outside Shower	S	S	S
· 1/2 Sliding Storage Tray (N/A ML: 1901, 1905, 2304, Models w/ Murphy Bed Opt, R: 17, 183, 19, 19L, 235S UL:2304S)	0	0	0
· Outside Antifreeze Stations in Storage Compartments	S	S	S
· Two-20 Lb Gas Bottles	S	S	S

Models	UL	ML	R
· Molded Bottle Cover	S	S	S
· Surface Coated Steel I-Beam Frame	S	S	S
· 96" Front Storage Deck (R: 19L, 21SSL Only)	--	--	S*
· Power Tongue Jack	0	0	0
· Stabilizer Jacks	S	S	S
· Power Stabilizer Jacks	0	--	--
· Torsion Axle, Rubber-Ryde Suspension	S	S	S
· Easy Lube Axles	S	S	S
· Automotive Radial Tires	S	S	S
· 14" Tires with Double Step	S	S	S
· Off Road Package (Includes: 15" Off Road Tires and Aluminum Wheels) (R: 19L, 21SSL Only)	--	--	0*
· Chrome-look Wheel Covers	0	0	0
· Aluminum Wheels	0	0	0
· Spare Tire Carrier & Cover	CPB	OP/CPA	0
· Electronically Controlled Heated Holding Tanks	0	0	0
· Enclosed Holding Tanks	S	--	--
· Black Water Flush	S	--	--
<b>OPTION PKG. G (1901, 1904, 1905 ONLY) INCLUDES:</b>			
Gas Oven			
Microwave			
110 DSI Gas/Electric Six Gallon "Quick Recovery" Water Heater			
TV Antenna w/ Cable & Satellite Hook-up			
Spare Tire Carrier & Cover			
Outside Speakers			
<b>CONVENIENCE PKG. A (N/A 1901, 1904, 1905) INCLUDES:</b>			
13,500 BTU Roof A/C (All Except 2502S, 2503S)	--	0*	--
13,500 BTU Ducted Air (ML: 2502S, 2503S)			
Mounted 22" LCD TV w/ AM/FM Stereo, CD, DVD Player			
Gas Oven			
Microwave			

Models	UL	ML	R
110 DSI Gas/Electric Six Gallon "Quick Recovery" Water Heater			
Awning			
Windows w/ Tinted Safety Glass			
Outside Grill and Worktable			
Outside Speakers			
Spare Tire Carrier & Cover			
<b>CONVENIENCE PKG. B INCLUDES:</b>			
13,500 BTU Ducted Air	0	--	--
Mounted 22" LCD TV w/ AM/FM Stereo, CD, DVD Player			
Gas Oven			
Microwave			
110 DSI Gas/Electric Six Gallon "Quick Recovery" Water Heater			
Power Awning			
Large Assist Grab Handle			
Windows w/ Tinted Safety Glass			
Outside Grill and Worktable			
Outside Speakers			
Spare Tire Carrier & Cover			
<b>CONVENIENCE PACKAGE C INCLUDES:</b>			
13,500 BTU Roof A/C (17, 183, 19, 19L, 21DK)	--	--	0
13,500 BTU Ducted Air (21SS, 21SSL, 23SS, 233S, 21RS, 23RS)			
Mounted 22" LCD TV w/ TV Antenna & Cable Hook-up			
Microwave			
110 DSI Gas/Electric Six Gallon "Quick Recovery" Water Heater			
Awning			
Windows w/ Tinted Safety Glass			
Outside Speakers			



### PRE-DELIVERY INSPECTION FACILITY

20,000 square feet of quality assurance. The bare essentials for a premium product. This state-of-the-art facility gives immediate daily feedback to production for quality assurance in every unit built.



**Forest River, Inc. encourages our customers to purchase their Forest River products from a local dealership whenever possible for the following reasons:**

It is the goal of Forest River, Inc. that all of our RV owners fully enjoy the RV experience and that customer satisfaction meets or exceeds their expectations!

- 1) Forest River, Inc. dealers are independently owned and operated businesses so priority service and scheduling is at their discretion and is often provided to customers that purchased their unit at that dealership.
- 2) Purchasing locally allows customers to establish meaningful relationships with a dealer, enhancing the RV experience through assistance with product questions, user tips or RV regulations for your state or country, and much more!
- 3) Canadian customers must meet requirements to bring an RV purchased out of the country to their home. These requirements may involve additional inspections and certifications, taxes and fees. Your local Canadian Dealer is a professional at meeting these requirements.
- 4) Scheduling timely warranty repairs and adjustments through a local dealership provides far greater flexibility and convenience to you, the customer!

### YOUR ROCKWOOD DEALER



Rockwood

# Warranty

For details on Rockwood's complete warranty program, see your Rockwood dealer. When it comes to backing products with the same quality and commitment it has when it begins the manufacturing process, the only name you have to remember when you're looking for a recreational vehicle is Rockwood. Rockwood offers the following additional limited warranties to the original purchasers. Consult written warranty for details.

1. Twelve-year vinyl roof warranty, 2. Two-year fiberglass warranty, 3. Five-year axle warranty, 4. Five-year tent warranty, 5. One-year bumper to bumper warranty, 6. Available second-year warranty



#### Learn More

Scan this barcode using a QR Reader on your smart phone to learn more about Forest River.



A Berkshire Hathaway company.

201 West Elm Millersburg, IN 46543 [www.forestriverinc.com/rockwood](http://www.forestriverinc.com/rockwood) 574.642.2640

All specifications contained herein are based on the latest product information at time of printing. Forest River reserves the right to make changes in colors, materials, equipment and specifications at any time without notice and assumes no responsibility for any errors in this brochure. Litho. U.S.A. FOR 0907